

4-1974

George Fox College Life, April 1974

George Fox University Archives

Follow this and additional works at: http://digitalcommons.georgefox.edu/gfc_life

Recommended Citation

George Fox University Archives, "George Fox College Life, April 1974" (1974). *George Fox College Life*. Book 34.
http://digitalcommons.georgefox.edu/gfc_life/34

This Book is brought to you for free and open access by the Archives at Digital Commons @ George Fox University. It has been accepted for inclusion in George Fox College Life by an authorized administrator of Digital Commons @ George Fox University. For more information, please contact arolfe@georgefox.edu.

GEORGE FOX COLLEGE

April '74

LIFE!



George Fox College band members spent their spring break in Southern California on an 11-day tour highlighted by an appearance at the Disneyland Hotel (see story below). The 54 students also spent a day touring the famous park and its rides.

California Dinner for GFC Features Singer Pat Boone

Singer Pat Boone was the special guest for the seventh annual Southern California Dinner for George Fox College March 18 at the Disneyland Hotel.

More than 700 persons attended the dinner, the most successful held to date. The recording star, actor and TV personality, in addition to his testimony, spoke highly in favor of Christian education such as that offered by George Fox.

"I have a soft spot already for George Fox," Boone said. "I am glad there is a George Fox in this part of the nation."

"I am glad there are so many fresh-faced, dedicated young people that I see around the room here who want a Christian education and I'm glad there are people here in a position to keep something like this going," he added.

"I pray that George Fox will continue to be one of those schools that points people to Jesus," he said.

The invitational dinner, funded by an alumnus of the college in California, raised more than \$25,000 in cash and pledges for the college's annual fund.

Also appearing on the program was the GFC Concert Band, with President David Le Shana bringing the guests up-to-date on the college's plans and successes during the last year. The occasion was used to announce the gift to the college of \$200,000 for a new Fine Arts Center (see separate story).

The friends and fund raising program is coordinated by the college's development office and a steering committee in Southern California headed by T. Eugene Coffin, pastor of the Whittier Friends Church and a 1937 GFC graduate.

Guaranteed Tuition Plan Offered by College

A guaranteed tuition plan to assure students of four years of education under costs at which they enter will be launched this fall by George Fox College. The plan is believed unique in the Northwest, with only a few colleges in the United States on such a program.

Under the new plan students will pay a flat fee for each term hour in which they are enrolled. Each entering class will be under a different rate. Students will have an advantage under the new plan of being able to anticipate total education costs for receiving their degree.

For next year's seniors, those students enrolled continuously on a full-time basis since the fall of 1971, next year's rate is \$35 an hour, same as the present charge. For juniors enrolled continuously since the fall of 1972, the rate will be \$36, for sophomores enrolled continuously on a full-time basis since the fall of

1973, the rate will be \$37 and for next year's entering freshmen the rate will be \$38 per credit hour with a four-year guarantee at that rate.

Students will retain their entering rate without an increase for a maximum of four years as long as they complete at least 12 credit hours each regular term consecutively.

The program is still "basically experimental," according to GFC Business Manager Don Millage. The basic plan of guarantee can only be revoked in periods of extreme inflation where the Consumer Price Index (CPI) tops 8 percent as determined by the U.S. Bureau of Labor Statistics. Tuition would then be increased by a percentage equal to the amount by which the CPI increase exceeds the average increase for the preceding three years.

Compared to the present \$1,680 charge for three terms of 16 hours of credit, the new 16-hour rate for next year's seniors will be \$1,680; for juniors \$1,728; for sophomores \$1,776 and for freshmen \$1,824.

In total charges George Fox remains in the lower 40 percent of all private colleges in the Northwest. Currently tuition paid by students amounts to about 60 percent of the total costs with gifts and financial support from foundations, corporations, businesses and alumni supplying the rest.



Pat Boone and President David Le Shana.

Queen Launi Rules '74 Homecoming



A 27-year-old former WAVE from Missoula, Montana, was George Fox College's 1974 Homecoming queen.

Launi Manley, a blond-haired, blue-eyed junior, was named in campus ceremonies opening the weekend of activities.

Miss Manley, a physical education major is an active church worker for the Evangelical Church of North America. She was selected from a court that included Nancy Robinson, Milwaukie, Ore.; Sheryl Barnett, Earham, Iowa; Paula Bales, Newberg; and Sandra Larabee, Jefferson, Ore.

Homecoming events included open house, a talent show, alumni meetings, and a basketball game in which the Bruins downed Warner Pacific College.

Gift To Start Fine Arts Center Drive

A gift of \$200,000 has been made to George Fox College for the start of a new fine arts center.

The gift, from Lebanon, Ore., lumberman William H. Bauman and his wife Mary is one of the largest ever received by the college.

It follows another large gift last June from Beaverton lumberman James Miller to be used for starting a physical education-sports complex.

Campaigns to complete the two major facilities will be concurrent, according to President David Le Shana.

The Fine Arts project will actually be a "recycling" of the present gymnasium when it is replaced by the new sports complex. The campus planning committee is recommending to the college's Board of Trustees that Hester Gym, built in 1946, serve as the basis for the new Fine Arts Center. The brick structure would be expanded with additions and completely renovated inside and out to meet its new use.

The new center would replace two "temporary" buildings erected in 1947 and now crowded because of enrollment expansion at the college. It will house music classes, practice

labs, faculty offices and an auditorium.

The gift follows the sale of Bauman Lumber Co. to Willamette Industries, Inc., another Oregon lumber company. Bauman, a member of the George Fox board since 1969, is remaining with Willamette Industries.

While architects and planners are

City Launches GFC Student Fund

A \$25,000 fund drive to show that Newberg supports George Fox College is underway through leadership of some of the city's top leaders and businessmen.

The drive has the aim of raising the goal by May 24 in conjunction with the college's annual Commencement Dinner. It is the first community effort in behalf of the college in 15 years.

This spring's campaign, called project SHIP—Student Help Investment Program—is designed as the first of a continuing annual support program, according to Newberg area Chamber of Commerce president,

coming up with designs for the new facilities, college officials are readying plans for a fund drive to get the projects started as soon as possible.

Le Shana called the gift "an indication of the growing support for George Fox College in standing by its commitment with an evangelical emphasis and providing a high quality education with a purpose."

Ken Hough, chairman of the steering committee.

Funds raised will be used to help students at the college rather than for buildings or special projects. Residents and businesses are pledging certain amounts for each student ranging from one cent to \$5.

Campaign leaders stress the effort is not a response to any problem at the college, currently one of Oregon's fastest growing colleges and operating with balanced budgets, but is a concentrated program to show that Newberg residents back the college and want the financial soundness to continue.

GFC at a Glance

FOURTH SUMMER TOUR STARTS IN JUNE

Extensive travel and three weeks in the Holy Land will highlight the fourth annual George Fox College Summer Tour.

Open to both those interested in college credit and those just wishing to sightsee, the tour starts June 19 for a month.

Participants will leave Portland via air for London, cross Europe by train, spend three days in Rome, then will travel by ship and train to Athens.

After arriving in Tel Aviv by air, the travelers will spend three weeks in the Holy Land. College credit will be given in courses in Bible, history or political science for those who register.

The tour will return via Zurich and Copenhagen. Cost for the tour is approximately \$1,500 with Paul Mills and Milo Ross as codirectors.

CONSOLIDATED ENROLLMENT HIGHEST EVER

Enrollment at George Fox College spring term is up 6 percent over the same term a year ago. Registered on campus are 422 students. Last year the total was 398.

The freshman class is the largest with 139 students. There are 97 sophomores, 83 juniors, and 95 seniors, including 10 on a joint-degree program with Oregon College of Education. In addition there are four students taking postgraduate courses and four students are unclassified.

Eleven students are new to campus this term giving the college a consolidated (total students) enrollment of 500 for the 1973-74 school year. That level is the highest ever in the college's 83-year history. The previous record was 499 in the 1970-71 school year.

None of the registered figures include students enrolled for classes at the college's Kotzebue, Alaska, center.

EDUCATION PROGRAMS APPROVED

The Oregon Teachers Standards and Practices Commission has granted complete approval to the teacher education programs of George Fox College.

Approval by the commission enables George Fox graduates from the programs to teach in Oregon's secondary schools.

All programs requested were approved. They include language arts, speech, drama, prealgebra and geometry, advanced mathematics, music (grades kindergarten through 12), physical education (grades kindergarten through 12), science-biology, science-integrated, social studies, and health (combined with physical education, biology, integrated science and social studies).

The college requested the program approval to meet new rules for certification established in 1972. All colleges must submit their programs for renewal under the new standards prior to the end of 1974.

CHOIR SETS EUROPEAN TOUR

The George Fox College A Cappella Choir will become the college's first performance group to tour overseas when it travels to Europe in June.

The 24-member choir will sing for military bases, churches and schools in the British Isles, Belgium and West Germany.

Directed by Dr. Jerry Friesen, associate professor of music at GFC since 1966, the choir will leave June 1 for a two-week schedule.

In addition to the performances the choir will sightsee in "George Fox country" in England, home of George Fox, the founder of the Friends denomination after whom the college is named. Each choir member making the trip is providing \$500 for travel expenses.

Choir members have been conducting fund raising projects ranging from building razing to rummage sales to earn their way. In addition, a special fund has been established at the college to receive donations.

COLLEGE STARTS RADIO PROGRAM

George Fox College has taken to the air waves in Northwest Oregon with the start of a new radio program series.

The program *College Perspective* is aired Fridays at 6:35 p.m. on McMinnville station KMCM.

Taped on campus, the program features GFC President David Le Shana as host. The 25-minute weekly program involves interviews of campus guests and college personnel.

Technical work for the program is being provided by the college's audiovisual department, and the radio station provides the time as a public service.

YFC OFFICIAL IS STALEY LECTURER

Ken Overstreet, first vice-president of Youth for Christ International and director of Campus Life Clubs in San Diego, was speaker for George Fox's annual Christian Emphasis Week.

Overstreet was the Staley Distinguished Christian Scholar Lecturer for the three-day series of twice-a-day sessions. In addition to his speaking assignments, Overstreet was available on campus for counseling.

As the Staley Distinguished Scholar Lecturer Overstreet's campus appearance was supported by the Thomas F. Staley Foundation of New York. The lectureship was established in 1969 and brings to college and university campuses of America outstanding scholars who can clearly communicate with students.

CAMPUS HOSTS ARTS FESTIVAL

Total attendance ran into the thousands for the 15 events and continuous art displays during Festival of the Arts VI on campus April 15-28.

Sponsored by the GFC Women's Auxiliary and the donations of more than 50 Newberg area residents, the festival featured works by 53 western artists. Exhibits included metal miniatures, acrylics, oils, watercolors, sculpture, photography, ceramic, silk screen and stitchery.

Specific events ranged from recitals, concerts and poetry reading to drama lectures and an arts carnival. Many activities featured students and groups from the college's music department. All events but one were free to the public.

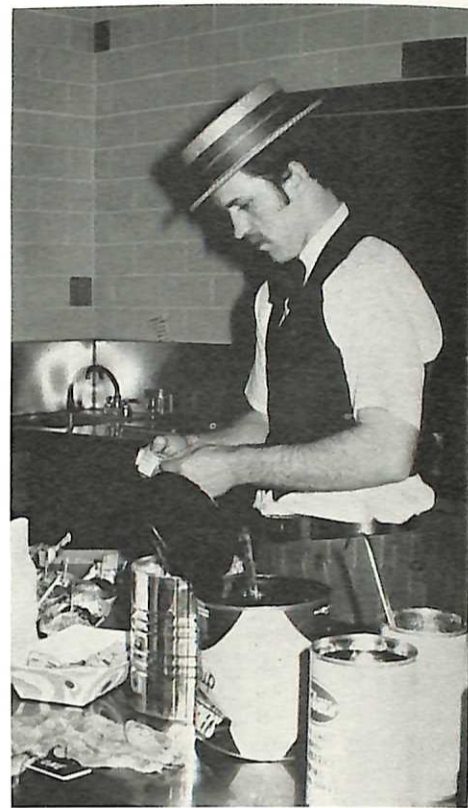
Started on a small scale in 1969 by the Auxiliary, the festival has now grown into the city's second largest community event following the annual summer celebration.



1.



2.



3.



4. 5.



1. Students look upward while "posing" for a national magazine ad.

2. Eugene, Ore. sophomore Rich Beebe (left) is auctioned off by Ray Willis, Los Angeles junior, and George Scott, Tucson, Ariz. junior, in a "slave sale" to raise funds for a coast outing by Pennington I men.

3. Senior Dave Powell helped make more than 300 sundaes for the annual Circle K-sponsored Roaring Twenties Party April 26.

4. The Student Union lounge took on a brighter look as volunteers painted supergraphics on the walls in a renovation project.

5. Christian Emphasis Week ended with students gathering in small groups for a time of sharing Christian love.

George Fox College
April 1974, page 2



LIFE!

April 1974 Vol. 4, No. 2

Barry Hubbell, Editor

LIFE! is published bimonthly by George Fox College, Newberg, Oregon 97132. Distribution is free. Second class postage paid at Newberg, Oregon 97132.



ALUMNI NEWS AND NOTES

LYNN (G31) and DORIS (G33) (KIVETT) HAMPTON are in The Dalles, Ore., where he is semiretired, working part time for Sherman County IED, and she is teaching at The Dalles Junior High.

GAY (FOLEY) LAVERTY (G52) and her two children have moved from Illinois to Clarkston, Wash., while her husband Michael is stationed in Thailand with the Air Force.

MELDA (CHANDLER) McGRATH (G53) is in Athens, Greece, with her family and is substitute teaching for the American Community Schools while her husband John is stationed there in the Air Force.

JANET (HINSHAW) SNOW (G53) is teaching reading in grades 4-8 in St. Paul, Ore.

ELLETTA (WHEELER) EICHENBERGER (n55) is the college supervisor for the intern teaching program in the Education Department at Seattle Pacific College.

RICHARD ZELLER (G55) and his family are living in Milwaukie, Ore., and are active as a family singing group appearing in churches and schools throughout the Northwest.

MAYNARD CORLETT (G59), former curriculum administrator for Woodburn (Ore.) High and Middle High Schools, has been named district assistant superintendent by the Woodburn School Board.

DAVID MIRGON (G61) of Seattle has been appointed to the Washington Governor's Task Force in Chemotherapy. He is assisting in writing a state plan for the treatment of drug abuse.

DAVE VAN BERGEN (G62) is the new manager of Photo Factory Inc. in Newberg.

DELBERT MELIZA (G66) has received a missionary appointment to Brazil with the Conservative Baptist Foreign Mission Society. Currently working toward a Master of Theology degree from Western Conservative Baptist Seminary, Portland, he will be a "circuit rider" traveling to various cities to train Brazilian church leaders.

JESS WILSON (G66) has opened a new furniture/general merchandise store in Newberg.

EUNICE (WOMBLE) BALES (G69) is working toward her master's degree in social work at Ohio State University while DORLAN (G69) is pastor of West Milton Friends Meeting and attending Earlham School of Religion.

MEL (G70) and JOYCE (NORDYKE) (n71) WONDERLY are at the University of California at Davis where he is director of Saga Food Services.

MARK (G71) and GLORIA (HIGHTOWER) (n71) HIRATSUKA are in Anchorage, Alaska, where he is director of special education for the Anchorage Borough School System, working with the educationally handicapped children.

DAVE MAZE (G71) is teaching sixth grade at Earl Boyles School in the David Douglas School System near Portland.

SUSAN JACKSON (G71) is a food service manager with Saga Food Service at The Colorado College in Colorado Springs, Colo.

SHARON SMITH (G71) is employed by Republic Industrial Bank in Colorado Springs, Colo., handling the collection of loans.

JEFF STOUT (n71) is in his first year medical school in Mexico after attending language school in San Jose, Costa Rica. He plans to become a medical missionary.

JOHN PAYNE (n72) is now on the staff of Senator Frank Church of Idaho in Washington, D.C.

BARBARA HAINES (G72) is in her second year of teaching at Dundee Grade School in the Newberg School District.

BEV (REZ) MAYFIELD (n74) is a teacher's aid on the army base in Furth, Germany, while her husband is stationed in the Army.

VIC GALLIENNE (n74) is food service manager with Saga Administrative Corp. at Chapman College in Southern California.

MARRIAGES

EILEEN BROWN (G71) to Ed Lamb Mar. 16 in Portland.

ANDREA ROBERTS (G71) to Derald Hoerling, Dec. 29 in Medford, Ore.

SHARON DUNLAP (G72) to GARY JACKSON (G72), Dec. 29 in Eugene, Ore.

TAMARA HAVEMAN (n73) to Larry Randall Larson, Feb. 16 in Newberg.

BIRTHS

JON (n74) and CHERYL (LEWIS) (G72) CADD, a boy, Joshua William, born Feb. 5 in Portland.

JOHN (n72) and DIANE (BROWN) (G70) PAYNE, a boy, Jeremiah John, March 7 in Washington, D.C.

BOB (n66) and MARGARET (CHURCH) (G66) McCORMICK, a son, Richard Nevin, born Mar. 3 in Albany, Ore.

Tony and JOAN (JOHNSON) (n68) Dresel, a girl, Tiana Lee, born January 17 in Hilo, Hawaii.

DICK (G64) and Carolyn FOSTER, a boy, Nathan Lee, born Feb. 8 in Canoga Park, Ca.

FRED (G66) and LaVONNE (G69) (CRISMAN) GREGORY adopted a daughter, Crista LaShel, age 5 mo. in Bangladesh on Feb. 2.

MEL (G70) and JOYCE (n71) (NORDYKE) WONDERLY, a son, Kyle Edward, born Oct. 9 in Portland.

DEATHS

R. EARL KIVETT (n38) passed away April 8 in Cottage Grove, Ore.

CHASE CONOVER, former faculty member 1926-42, passed away February 26 in Bainbridge Island, Wash.

WENDELL WOODWARD (n26) passed away March 4 in Arizona.

California Alumni Honor Awarded to Glen Rinard



Alumni Director Gene Hockett (left) presents Glen Rinard with the 1974 Southern California Distinguished Alumnus Award as Emcee C. W. Perry shows approval.

Glen Rinard, pastor of the Long Beach (Calif.) Friends Church, is George Fox College's 1974 Southern California Alumnus of the Year.

A 1929 graduate of George Fox, Rinard was cited for his "leadership in the Friends Church, his quality of character and his interest and support in George Fox College." The award was presented by GFC Alumni Director Gene Hockett at the annual Southern California Dinner for GFC attended by more than 700 persons in the Disneyland Hotel, Anaheim.

Glen Rinard was a member of the college's Board of Trustees for 15 years until June 1971. He served

as the first representative for the George Fox Southern California field office that opened in February, 1972, and he has served pastorates in Oregon, Idaho, Illinois, Indiana, Colorado and California.

Glen Rinard has been a Friends minister for 43 years and currently is clerk of the California Yearly Meeting of Friends Church.

All three of Rinard's sons are George Fox graduates: Gil, professor at Emory University in Atlanta, Ga., in 1961; Dale, regional administrator for Sierra View, in 1967 and Dean, in his fourth year at the University of Oregon Medical School, in 1970.

Alumni 'Talk Back' To College During Day of Interaction

More than 20 George Fox alumni April 20 got the chance to tell college officials exactly what concerns them about the college.

In the "Day of Interaction," a new program developed by the Alumni Association, alumni from Oregon, Washington and Idaho sat down with officials to discuss the college, its programs and plans. Following a morning presentation of long-range plans and a noon luncheon, the alumni met in small groups to give their ideas and thoughts to President David Le Shana, Dean of the College William Green, Business Manager Don Millage, Dean of Student Affairs Harold Ankeny and Frank Cole, assistant to the president for long-range planning.

"Many of us who have attended George Fox wish to remain active in the college community and feel that

within the ranks of our alumni are many resources of great value to the college," said Roy McConaughy, a 1966 graduate who helped organize the program. McConaughy, a Hillsboro, Ore., teacher, was assisted by Alumni Association President Bill Hopper and Alumni Director Gene Hockett.

COMMENCEMENT WEEKEND May 24-26

Commencement Dinner
Friday, 5:45 p.m.
Alumni Banquet
Saturday, 7 p.m.
Baccalaureate
Sunday, 11 a.m.
Dr. Elton Trueblood
Commencement
Sunday, 3 p.m.
Dr. David Hubbard

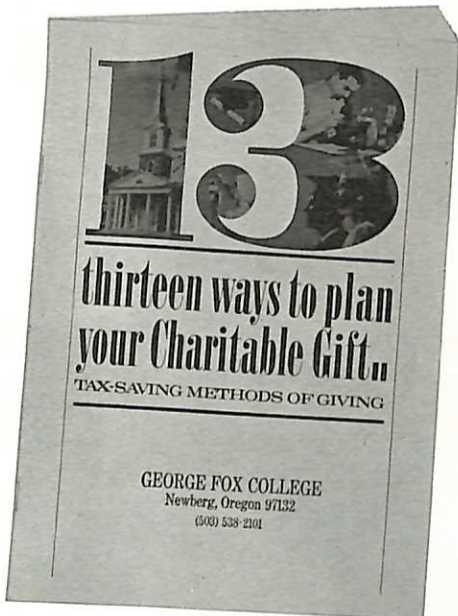
Serve and Save

Send your Real Estate to College

Available book describes 13 ways!

The above 32-page booklet describes thirteen ways you can serve . . . by sending real estate, properties, stocks, savings, etc. to college . . . and save at the same time.

The benefits to yourself (and spouse) can be enormous . . . in tax deductions, exclusions, exemptions . . . often amounting to thousands of dollars!



Another way we can help you is through our estate planning service, which is provided at no extra cost to you and may, in fact, save you substantial sums.

Either way, you have the excitement and lifelong satisfaction of knowing you will help many young people obtain a Christian education. You help yourself and others.

Mail coupon or write Director of Development, George Fox College, Newberg, Oregon 97132 for your personal copy.

Mail today for copy of "13 Ways . . ."

Yes, I would like to know how to "Serve and Save" by sending real estate to college.

Name _____

Street _____

City _____ State _____ Zip _____

Yes, I am interested in knowing more about your estate planning service.

George Fox College, Newberg, Oregon 97132



George Fox College
April 1974, page 3



Basketball Bruins Again in District Championship

"Almost!" That's the best way to describe George Fox College's defense of its NAIA District 2 basketball crown.

After 30 games and a long season that began in late November, the Bruins came within one point of their second consecutive title and trip to the NAIA national championships in Kansas City.

That one point was a 55-54 edging by Oregon Tech in the district championship game in Klamath Falls—a game in which the Bruins had the ball at the end, but senior guard Bob Wright could not get the shot, and an uncalled foul stopped a valiant comeback effort.

The championship appearance marked the fourth season in a row for the Bruins to be in the district playoffs, all engineered by Bruin Coach Lorin Miller as GFC has emerged as Oregon's top small college independent.

George Fox outclassed Pacific 92-72 in the semifinals to romp to the championship game again. In getting to the playoffs the Bruins compiled a 19-11 record, the best season ever in GFC's history.

After starting slow with an 8-9 record through 17 games, the Bruins put together an eight-game winning string, longest in nine years of NAIA competition, and finished the season by winning 11 of their last 13 games.

Highlighting the year was good road play in which the Bruins won six of those last 11 victories on the road, including tough wins at Nampa, Idaho, against Northwest Nazarene for the first-ever win on the Crusader court; in La Grande against Eastern Oregon and in Spokane with Northwest Conference leader Whitworth. The Bruin win there was the first Pirate defeat in nine home games.

In District 2 competition the Bruins were 15-9, including a 7-1 margin over other independents. The Bruins downed Western Baptist

GFC's Wunder Wins Honors

College basketball is over for the GF's senior center Rob Wunder, but he still continues to score.

The 6-5, 210-pound West Seattle High product has garnered four post-season honors awards, including naming to the national NAIA All-American honorable mention list.

Wunder, who totaled 567 points for an 18.9 average this year for the Bruins, began his honors collection with a selection to the District 2 NAIA All-Star first team.

Next came perhaps the highest honor—naming to United Press International's All-Pacific Coast basketball honorable mention squad which included selections from all levels of college basketball for four-year schools on the West Coast.

Wunder, who averaged 8.4 rebounds a game with a total of 251, also was selected to the Little All-Northwest Basketball squad picked by a 35-man panel of regional sportswriters. In two years at GFC Wunder accumulated 991 points and a 16.2 points per game scoring average, highest ever for a Bruin in NAIA competition.

George Fox College
April 1974, page 4



twice, Northwest Nazarene both times, Columbia Christian each time and split with Warner Pacific College.

Against Northwest Conference foes the Bruins finished 6-6 with a victory over Yamhill County rival Linfield, two wins over Willamette as well as two wins over Pacific and one over Whitworth. The Bruins were three and three with Evergreen Conference teams: two victories over Eastern Oregon, a split with Southern Oregon, and two defeats by OTI's Owls on their court.

With District 1 schools the Bruins went 4-1, including two wins over Lewis and Clark State, a victory over the University of Alaska and the win over Whitworth.

George Fox took a big step in early January, taking on NCAA University of Puget Sound and bowing 81-65 in Tacoma. A rematch is scheduled next year.

Individually, the honors go to Wunder, who led the Bruins in scoring with an 18.9 average, while hitting at a .482 clip and rebounding at an 8.6 average (see separate story).

Junior Ray Willis, expected to be a mainstay for the Bruins next year, topped the Bruins in rebounding, assists and steals. The 6-5 forward averaged 9.6 boards a game, totaling 289, including 110 on offense. Willis passed off for 122 assists and swiped 44 opponent balls.

Junior "Hutch" Hutchinson led the Bruins in free-throw accuracy, hitting at a .787 pace on 37 of 47 attempts.

Willis had the most attempts, 123, hitting on 83 for a .675 average while Wunder connected on the most charity tosses at 85 of 119 for a .714 average.

Senior Bob Wright, in his first and last year for the Bruins, made it a spectacular one. The Snohomish, Wash., product scored 16.0 points a game, topped only by Wunder. He had a .478 accuracy mark. He was

New Coach Guides Baseballers

George Fox Bruin baseballers posted an even-up record at 3-3 early in the season under new coach Craig Taylor.

Taylor, a standout basketball and baseball player for the Bruins the last two years, was selected to the baseball coaching spot in February, replacing Bob Brown who resigned his teaching and coaching duties for health reasons.

Taylor, 23, is a pitcher who produced a two-year 9-4 record for GFC, following a 7-0 career at Big Bend Community College in Washington.

Taylor's crew has managed some exciting baseball despite inclement weather, which has continued to hamper playing dates.

The three opening games were played in near-freezing weather in Klamath Falls with Oregon Tech. The Bruins, with only one day of practice on their own field, dropped the trio by close decisions.

The Bruins clobbered Lewis and Clark College of Portland 13-5 in a nighttime game for their first win of the season and the first against the Pioneers. Wright threw all of the rain-shortened contest.



Center Rob Wunder scored an average of 18.9 points a game, the highest for any Bruin in nine seasons of NAIA competition, and led George Fox to its fourth straight district championship appearance. The 6-5 Seattle senior's playing earned him four postseason honors. (See story this page.)

third in assists with 87 and finished second in steals with 43.

Also ending a successful career with the Bruins was Jim Blake. The 6-7 Tucson, Ariz., native averaged 4.6 points a game in a reserve role and 5.2 rebounds. Blake hit on 57 of 127 from the floor for a .449 average and 137 points.

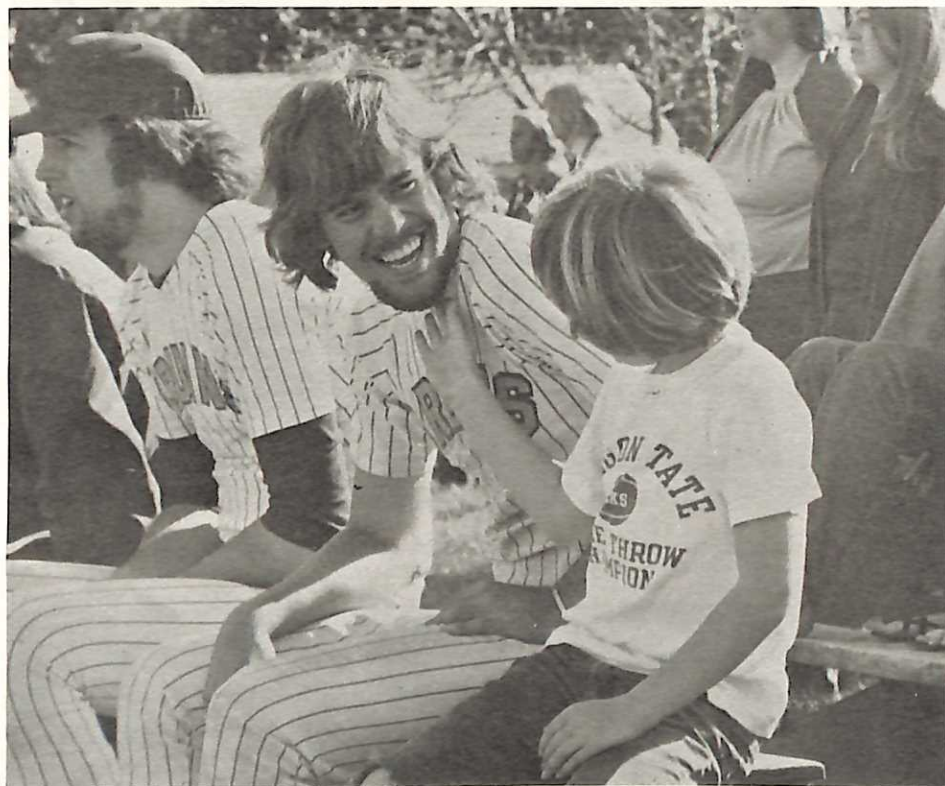
Teamwise the Bruins outscored their opponents 76.6 to 68.5, second highest winning margin in the district, and outrebounded the opposition 46.8 to 40.8.

Miller's next edition of the Bruins will start their fifth playoff quest Dec. 5 against Linfield in the District Tip-off Tournament.

Wenatchee, Wash., product Lauri Hutchinson, hitting .500 for the season (9-18), led an awesome offensive show as the Bruins romped over Western Baptist 17-2 and 5-2 for wins two and three of the season. The Bruins swiped a total of 18 bases in the double header, 12 in the first contest.

Phil Lundy, another Sherwood product, won the home season opener, with relief help from freshman Tom Hewitt, and Rhodes went the distance in the second game.

On the schedule are games with Willamette, Pacific, Southern Oregon, Eastern Oregon and Northwest Nazarene.



Freshman Mark Lawson's newly started beard couldn't be resisted by Monte Miller, son of Athletic Director Lorin Miller, in the Bruin's first home game. Young Miller occupied the end spot on the bench beside Lawson, a Caldwell, Idaho, shortstop, to get a better view of the game. The Bruins won 17-2 and 5-2 over Western Baptist.