

12-1974

George Fox College Life, December 1974

George Fox University Archives

Follow this and additional works at: http://digitalcommons.georgefox.edu/gfc_life

Recommended Citation

George Fox University Archives, "George Fox College Life, December 1974" (1974). *George Fox College Life*. Book 30.
http://digitalcommons.georgefox.edu/gfc_life/30

This Book is brought to you for free and open access by the Archives at Digital Commons @ George Fox University. It has been accepted for inclusion in George Fox College Life by an authorized administrator of Digital Commons @ George Fox University. For more information, please contact arolfe@georgefox.edu.



A winter snowfall softens the campus.

\$200,000 Gift to Establish Minas Scholarship Fund

A retired doctor with a fondness for Quaker relief work he viewed in his childhood has honored that remembrance with a gift of \$200,000 to George Fox College.

Dr. Vaughn N. Minas, an ophthalmologist who died Oct. 27 at the age of 80, willed the college the fund to be used for scholarships.

The scholarships will be named for his wife, Elizabeth Carey Minas, a George Fox College alumna whose father, Gervas Carey, was president of the college from 1947-1950. She is currently a volunteer worker for the college's Shambaugh Library staff, after serving nearly 25 years as a librarian in Honolulu, Hawaii.

Dr. Minas was of Armenian parentage and grew up in Turkey when Armenians were being persecuted. It was there he observed Quaker relief workers, admiring their courage and efforts. That remembrance, along with a desire to help the small, independent college, led to the gift designation, according to Mrs. Minas.

George Fox College has more Friends students than any other U.S. college. Scholarships, however, will not be limited to Quaker students. Dr. Minas specified that the proceeds from the permanent endowment be used to help worthy students with limited means.

Dr. Minas, who died in the Stanford Medical Center after a lengthy illness, received his medical degree in Lausanne, Switzerland, before immigrating to the United States. He practiced for many years in Las Vegas, New Mexico, and retired to Reno, Nevada.

Mrs. Minas, after whom the scholarships will be named, returned to Newberg in 1972. She attended George Fox College (then Pacific) from 1929-1931, later transferring to the University of Washington to receive a degree in librarianship. Her father was pastor of the Newberg Friends Church for two periods, and was a member of the college's religion faculty prior to being named president.

First scholarships will be awarded next fall.

NW Math Improvement Program Launched By In-service Courses

Mathematics classrooms in elementary schools throughout the Northwest are becoming experience laboratories for teachers under a new in-service course program being established by George Fox College.

Up to 45,000 elementary teachers in Oregon, Washington and Idaho are being invited to participate in the individual study program.

The college will be the exclusive Northwestern coordinator for the program developed at Fresno Pacific College in California, which already has had 2,500 persons participate.

The program is aimed at improving mathematics teaching skills of teachers. Nine individual at-home study courses are offered through the use of cassette tapes, accompanied by practical experience using games and materials provided in the teaching packet.

Teachers set their own times, places, pace of lessons and frequency of review. They then attend one full-day workshop that will be set up wherever 15 or 20 persons are participating in an area, usually within 50 miles of their home. Four George Fox professors are involved in the workshops.

The courses will provide credit to upgrade teaching certificates or apply to fifth-year certificates.

Examination of students in California using the materials given teachers in the courses showed a median more than a grade above the national average.

The course content focuses on essential topics in the curriculum and can be integrated into the ongoing program. Classroom duplication rights are granted with most materials, and the instruction and guide tapes provide a permanent resource of self-improvement for the teacher.

Among the nine courses, all are four-hour credit programs except a six-credit hour course in Building the Unfinished Curriculum. Expected to get some of the most attention is a new course on the metric system, suitable for grades three through six.

Other courses to be offered are four on innovations in teaching mathematics by various grade levels, arithmetic at the problem-solving level, and two on individualizing mathematics instruction.

George Fox Co.

Archives

GEORGE
FOX
COLLEGE
Dec. '74

LIFE!

Premier Portland Dinner Draws Business Leaders

"George Fox College believes in discipline and believes in developing strong moral character; as president of a large corporation in Portland, that's the type of people that you like to have in your organization . . ."

Robert Pamplin, president and chairman of the board of Georgia Pacific, one of the nation's largest lumber industries, made those remarks to nearly 1,000 persons attending the premier Portland Area Dinner for George Fox College Dec. 9.

Pamplin was one of three of Oregon's top business leaders featured in "personal perspectives." The dinner was held amid sparkling seasonal decorations in the Portland Hilton Hotel's grand ballroom.

"We believe in the successes of your college . . ." Pamplin said. "So I am a strong believer myself in supporting the George Foxes in the United States."

His reactions were echoed by Walter Dyke, general manager of the McMinnville division of Hewlett-Packard and one of three trustees of the Millicent Foundation, a strong supporter of George Fox.

"The key is its product," Dyke said of GFC graduates who "support our system and our values." Dyke said there is a "substantial demand for Christian education—that which built America." He said this creates an opportunity for schools such as George Fox that are serving needs and in doing so are being increasingly supported by investors.

"It has good financial performance, a balanced budget, and assets are growing faster than its liabilities," Dyke said of the college. "This may sound a little bit like business talk," he added, "but it is this sort of criteria investors look at when they want to decide for the best."

"I looked into GFC, discovered it was a good vehicle for providing this kind of education for the next generation, and I think some of you might also find this a good investment," Dyke said.

James Miller, former president of Cascadia Lumber Co. and a Portland investor, had similar thoughts: "The hope of the future is in our young people being educated today, and the quality of education as offered by colleges such as George Fox is producing responsible citizens better able to meet the challenges of the future."

Also featured on the program were personal perspectives of Division of Natural Sciences chairman, Dr. Donald Chittick, and Student Body President Tim Bletscher, Portland; a large-screen audiovisual presentation, "The Dimensions of Success," prepared by Bob Gilmore, director of instructional media; and the GFC A Cappella Choir directed by Dr. Jerry Friesen. The dinner was emceed by Portland television personality Kirby Brumfield.

Patterned after a similar dinner held annually for the college in Southern California for the last eight years, the Portland event was chaired by Bill Field, schedule coordinator for the

Carnation Co., Portland, a 1952 GFC alumnus and a member of the college's Board of Trustees.

"People acquainted with George Fox are proud of what is happening; we believe more ought to know, however, and planned this special occasion to make it possible," Field said. Recognized at the dinner were board member Bill Bauman, manager of the Lebanon lumber operations of Willamette Industries, and his wife Mary, who underwrote the dinner.

Plans already are underway to make the Portland dinner an annual affair, with up to 1,500 persons expected next year.



The Premier Portland Area Dinner for George Fox featured (top) Robert Pamplin, president and chairman of the board of Georgia Pacific Company; (center) Kirby Brumfield, Portland television personality as emcee, and Walter Dyke, general manager of the McMinnville division of Hewlett-Packard; (bottom) Bill Bauman, manager of the Lebanon operations of Willamette Industries, and his wife Mary, who underwrote the dinner.

Who Goes to George Fox? Statistics Reveal it All

If you think George Fox is a Friends or Quaker college, you're both right and wrong.

Statistics from the registrar's office show that Quaker students lead in number, but more than half of the students are not members of the Friends Church.

On campus are 188 Friends students, or 39 percent of the student body. Sixty-one percent belong to more than 35 other denominations.

At the same time the number of Friends students attending George Fox is higher than at any other U.S. college. The 39 percent figure compares to 41 percent a year ago.

The second leading denomination on campus is the Evangelical Church of North America with 58 students, or 12 percent of the students, up from 10.8 a year ago. Baptist students rank third with 40, or 8 percent of the total compared to 9.1 last year.

Free Methodist students compose 3.5 percent of the student total, and 2.5 percent are members of the Church of the Nazarene. Just 6 percent of the students list no denominational preference.

By states, Oregon, Washington, California and Idaho contribute 88 percent of the students. Oregon contributes nearly six of every 10 students on campus. The 60 percent figure, or 289 Oregonians, compares to 59 percent a year ago.

Washington students represent 11.5 percent of the total; Californians number 9 percent of the student body, and Idahoans represent 7.5 percent of the total.

Students come from 20 states and eight foreign countries. That's up from 17 states and eight nations last year. Represented on campus are Canada, Hong Kong, Israel, Kenya, Nepal, Peru and Sierra Leone.

From the United States students have come from Alaska and Hawaii on the west to New Jersey and Pennsylvania on the east.

An enrollment breakdown shows 73 percent of the students live in campus housing, either in dormitories or apartments and houses near campus owned by the college.

None of the figures include persons at the college's Kotzebue, Alaska, center.



George Fox College is headed by a 42-member Board of Trustees elected by Northwest Yearly Meeting of Friends Church, alumni, and the board itself. Meeting on campus semiannually, the board sets policy and determines future directions. On campus in December were (bottom to top left row) Dr. Claude Lewis, Central Point, Ore.; Norman Winters, Nampa, Idaho; Floyd Watson, Eugene, Ore.; Dr. Homer Hester, Newberg; Walter Wilhite, Boise, Idaho; Sam Farmer, Chicago; Dr. John Brougher, Vancouver, Wash. (second row from left) Dr. Wayne Roberts, Central Point, Ore.; Norval Hadley, Newberg; Donald McNichols, Seattle; Dr. Stanley Kern, Newberg; Thelma Martin, Caldwell, Idaho; Dr. Ted Engstrom, Arcadia, Calif. (third row) Fred Baker, Tacoma, Wash.; Arnold Owen, Berkeley, Calif.; Philip Martin, Whittier, Calif.; Aaron Hamlin, Pasadena, Calif.; Frank Nicodem, Mt. Prospect, Ill.; Richard Beebe, Eugene, Ore. (fourth row) Bill Bauman, Lebanon, Ore.; Walter Lee, Star, Idaho; Philip Harmon, Seattle; Kara Cole, Portland; Dr. David Le Shana, GFC president; Charles Beals, Newberg; James Miller, Portland. (fifth row) Roger Minthorne, Lake Oswego, Ore.; Dr. T. Eugene Coffin, Whittier, Calif.; Elizabeth Edwards, Newberg; Charlotte Macy, Rockaway, Ore.; Jack Willcuts, Portland; Bill Field, Portland; Wilbert Eichenberger, Santa Ana, Calif.

Church Worker Courses Featured In Continuing Education Program

Courses for church workers are being emphasized in the winter term Continuing Education Division offerings by George Fox College.

One course, Comparative Religions, is taught by GFC President David Le Shana.

Sessions started January 6 and run through March 14. Courses are offered to area adults at a reduced tuition rate of \$25 a credit hour. Senior citizens (those 63 and over) attend without charge except for a one-time \$5 registration fee.

Departing from its former format of

limiting adult continuing education courses to evenings, the college this term has opened courses throughout the day.

Winter term Religion Department offerings include: Creative Bible Teachings, Christian Evangelism, Synoptic Gospels, Paul's Epistles, Comparative Religions, Ethics, and Contemporary Religious Thought.

The George Fox adult program was established in 1973 after studies indicated a need and a desire by many adults for further educational training at the local level.



(top left) "Snowbathing" in a frigid atmosphere in the first snowfall of the year were Don O'Neil, Omak, Wash., junior; Skip Gray, Albany, Ore., sophomore, and Mike Lehman, Tulelake, Calif., sophomore.

(top right) Off to classes from her Edwards residence hall campus home, despite the snowfall, is Gail Peterson, a Spokane, Wash., senior.

(lower left) Window shopping at the annual GFC Women's Auxiliary bazaar are Debbie Miller, Prineville freshman, and Betty Koppenhafer, Madras freshman.

(lower right) Tackling a pile of clothes in need of mending is Carol Roth, Albany sophomore, one of the members of the campus Home Economics Association sponsoring "Darn It Day," a project to repair the clothes of the guys on campus.

Globe Spanning Radio Contact Keeps GFC's Pat in Touch

A Eugene railroad conductor and a Seattle student teamed up to help GFC's Pat Carlson voice happy holidays to her parents in Peru.

The globe spanning contact over more than 3,500 miles from the campus to near Lima allowed Pat, a freshman at George Fox, to make her first voice contact with her family since leaving a small missionary base in Yarinacocha.

Santa's helpers to Pat were Gary Lewis, a GFC communication arts major who is a ham radio operator, and Earl Hemengway, a 14-year ham radio veteran of Eugene who made the initial contact with Pat's parents.



Using a campus ham radio station that allows followers of that hobby to practice their craft as well as to help several campus students keep in touch with missionary parents, Pat spent nearly a half hour relating her findings on life in Newberg and hearing about the mission camp she left in July.

Her parents have been Wycliffe Bible Translator missionaries for 14 years, returning to the United States only every five years. For Pat, one of five children, the trip to George Fox College was a long one and something to get used to after nearly a lifetime in Peru.

She happily related the transition to her Peruvian family and wished them happy holidays through a series of contacts and steps over a period of days. Pat even missed church services to assure she got her chance.

Learning that Lewis might help her out, Pat had her parents write, forwarding information on time, date, and frequency a missions base ham, Glenn Smith, would be transmitting. He was first heard over the "Halo Net," a group of missionary hams who pass medical and emergency traffic into the United States and other countries.

In Eugene, 100 miles from Newberg, Hemengway managed to connect with Smith while Lewis was at work and arranged for a schedule for the following Sunday.

With red-headed Pat at his side, Lewis took it from there, and the holiday contact was made.

And Pat says she's not waiting until next Christmas to try the long-range radio contact again.



GEORGE FOX COLLEGE
DECEMBER 1974, PAGE 2

LIFE!

December 1974

Vol. 4, No. 6

Barry Hubbell, Editor

LIFE! is published bimonthly by George Fox College, Newberg, Oregon 97132. Distribution is free. Second class postage paid at Newberg, Oregon 97132.



ALUMNI NEWS AND NOTES

HAL J. MAY (G51) received a doctoral degree in counseling psychology Dec. 13 from the University of Oregon. He is a psychologist in the Portland area.

DAVID HANSON (n59) is assistant to the president in alumni affairs for Northwest Nazarene College, Nampa, Idaho.

GAE (MARTIN) RECK (n66) is editor of the *Friendly Spirit*, a quarterly outreach magazine published by the Redwood City (Calif.) Free Methodist Church.

BARBARA BAKER (G67) is editor of "Asia at a Glance," a bimonthly news bulletin for the Asia-South Pacific ministry of Campus Crusade for Christ International with her office in Baguio City, Philippines. For Explo '74 in August in Seoul, South Korea, she produced the souvenir program, wrote scripts, gathered news and conducted interviews.

SHIRLEY MEWHINNEY (G67) is secretary for the Asia-South Pacific office of Campus Crusade for Christ International in Baguio City, Philippines. She took minutes, arranged visas, charter flights and details for Explo '74 in August in Seoul, South Korea.

MERLIN GLANZMAN (G68) has moved from a position with Climax Manufacturing in Newberg to Homedale, Idaho, where he is managing his father's farm.

GARY ALBERS (G69) is teaching third grade in Sandy (Ore.) Elementary School.

JANET (LUND) ALBERS (G70) is assistant to the business manager at Sandy (Ore.) High School.

MARK MACKEY (G70) has been appointed financial administrator for Greater Europe Mission, an interdenominational Christian missionary agency working in 13 European countries. He will work in the organization's Wheaton, Ill., headquarters.

RICK RENTFRO (G70) is with International Harvester Export Co., based in Chicago, Ill., as assistant to the sales manager, responsible for distribution development with accounts in the Middle East, Africa and South-Central America.

PAMELA (VANDERHOFF) GARCIA (G71) is teaching fifth grade in Fruitland, Idaho.

BOB MUELLER (G71) is a representative for American Motors Sales Corporation in Portland.

JOHN BOOTH (G72) received a master's degree in church music Dec. 20 from New Orleans Baptist Theological Seminary. He is music and education director at Columbia Heights Baptist Church, Longview, Wash.

LORI (BRODHEAD) MUNDEN (n73) and her husband Dennis are living in Manson, Wash., where he is teaching vocational agriculture and she is taking care of their first child, Christina Rachel, one year old in January.

KEITH HUGHES (G74) is manager for the Newberg National Guard Armory.

CURT ANKENY (G74) has resigned as George Fox cross-country coach to resume his running career with Athleten in Action, based in Los Angeles, where he will run with a team competing with colleges across the U.S.

MARRIAGES

JACQUELIN DAVIS (n49) to Clyde Dwigans Oct. 12 in Salem, Ore.

ROXIE CALVERT (G72) to Gary Arnett, Oct. 26 in Redmond, Ore.

Janelle Willcuts to GORDON LOEWEN (G73) Oct. 26 in Portland.

KATHY HINSHAW (G73) to Dan Winniford Nov. 16 in Milwaukie, Ore.

VIRGINIA MARTIN (n76) to RONALD BOWDEN (G74) Oct. 12 in Portland.

BIRTHS

HOWARD (G73) and MARILYN (McDONALD) (n72) BINFORD, a girl, Amy Noelle, born Sept. 23 in Caldwell, Idaho.



George Fox's Alumni board meeting on campus (left to right) Frank Cole (G30), Alumni Director Gene Hockett, Mary Hadley (G49), Rod Vickers (G63), Bill Hopper (G58), Jim Jackson (G74), Yvonne Carr (G55), Ruthanna Hampton (G36) and Phil Roberts (G65).

Mel and GAE (n66) (MARTIN) RECK, a girl, Melody Gae, born Sept. 18 in Redwood City, Calif.

Ralph and SANDY (ANDERSON) (G70) WRIGHT, a girl, Jenifer Rebecca, born Oct. 27 in Aurora, Colo.

ALVIN (G65) and Jill WILKINS, a girl, Stacey Lynn, born Nov. 12 in Nampa, Idaho.

GORDON (G69) and CLETA (THORNBURG) (n72) CRISMAN, a boy, Andrew Neil, born Oct. 17 in Portland, Ore.

DENNIS (n71) and SUSAN (ZEULNER) (n72) ANKENY, a boy, Andrew Jason, born Oct. 25 in Salem, Ore.

DEATHS

EDGAR A. PEARSON (n14) passed away Dec. 7 in Seattle, Wash.

MYRTLE MILLS FRANZEN (n17) passed away Oct. 14 in Itasca, Ill.

Visitation Program Offers Alumni Three Days on Campus As Guest

How about a couple of days on the campus this spring?

That's the opportunity being offered to George Fox alumni under a new program created by the Alumni Association board of directors.

The plan will have alumni spend two or three days on campus as guests of the association, staying in guest rooms, eating in the commons, visiting classes and having informal sharing times with students and faculty.

The program's purpose is to give alumni an opportunity to see the day-to-day life on the campus in 1975; therefore weekday visits will be scheduled when classes are in session.

Alumni guests will be asked to give a written report of their impressions to the alumni board of directors, which

hopes to gain more input on alumni suggestions and comment, and which hopes to broaden the base of persons visiting the campus.

Persons interested in participating are invited to contact the college's Alumni Office as soon as possible so selection of participants can be made early.

Interaction Day Plans Underway

A repeat performance is scheduled for the George Fox Alumni Association "Day of Interaction."

Launched last year, the day-long program format allows alumni a chance to speak directly to college officials on matters about which they are concerned. This year's day is April 19.

About 40 persons will be invited to sit down with administrators and student leaders to discuss the college and its programs and plans. Emphasized this year will be student affairs personnel and student leaders.

Alumni will meet in small groups, listen to panels, hear individual comments, and be treated to a luncheon.

Persons interested in being involved in the interaction are asked to contact the Alumni Office.

Idaho Alumni Host Sixth College Dinner

More than 200 persons attended the sixth annual Idaho Dinner for George Fox College held in Boise Nov. 8.

Sponsored by the GFC Alumni Association, the dinner was arranged by alumni in the area, headed by Bruce Ankeny (G69), a teacher and coach at Greenleaf Academy.

GFC Chaplain Ron Crecelius gave the address. Also speaking were GFC President David Le Shana and Dean of Student Affairs Gene Habecker. Music was provided by a student brass group. Emceeding the program was Bob Willcuts (G60), a Parma, Idaho, insurance agent.

Preceding the 7:30 p.m. dinner in the Rodeway Inn was a half-hour informal reception.

Patterned after a similar banquet held annually at Disneyland in California, the dinner was planned for alumni, who were hosted by Alumni Director Gene Hockett; friends of the college, hosted by President Le Shana; and for prospective students, who were greeted by Admissions Director Jim Settle.

Increased Annuity Rates

... provide more attractive returns

Everything seems to be going up . . . up . . . UP . . . these days except income.

Fortunately, there's some good news on the income side of the ledger: *Earnings from George Fox Gift Annuities* are also going up.

President David Le Shana points out that with increased rates, Gift Annuities continue to be one of the many attractive ways by which friends can earn and serve simultaneously.

Here's How It Works

A stated amount in savings, stocks, bonds, or other property is transferred to George Fox College in exchange for a guaranteed income from the college each year, for the rest of your life (and a beneficiary, if desired). For some, there are added tax benefits, too.



New Rate Structure Approved

Set up at the 15th Conference on Gift Annuities, the increased rates apply to all new gift agreements, effective immediately.

As before, new agreements provide guaranteed lifetime income—up to 10 percent, depending upon age. And, they help provide young people with a Christian education.

Like details? Write or call Maurice Chandler, director of development. All he needs is your birthdate to quickly compute earnings you would receive. There's no obligation.

GEORGE FOX COLLEGE
Development Department • Newberg, OR 97132

Homecoming '75 February 15

Special chapel, 10:30 a.m.; tours; drama, 3 p.m.; alumni basketball game, 6 p.m.; Bruins vs. Northwest Nazarene, 8 p.m.; after-game fellowship.



Bruins Feature Defense; Maintain Top Ranking

National ranking, the district's best independent, and its top defensive team mark the George Fox standing at midpoint through the 1974-75 basketball campaign.

With a 10-6 record, the Bruins in the Jan. 15 NAIA rankings stood eighth in the nation in team winning margin (15.6), and eighth in team free-throw accuracy (.751 percent). Six-six freshman standout Paul Cozens stands second in the nation in free-throw accuracy, sporting a nifty .944 mark on 34 of 36 free throw attempts.

Coach Lorin Miller's team, after 16 games, is holding opponents to 71.7 points a game, best in the 13-member district. Striving for a fifth straight district playoff bid, the Bruins are ahead of their standing at the same time a year ago when they had an even 8-8 record.

Following an opening win over Linfield College (95-65) the Bruins lost a pair to Oregon College of Education (74-71) and Lewis and Clark (75-70), then put together a string of seven victories, downing in order Linfield (92-79), Eastern Oregon State (106-76), Willamette University (95-68), Whitworth College (63-62), Linfield (91-63), Pacific University (89-70), and Western Baptist (93-57) before losing to Pacific (69-64) in a rematch, with two of the top Bruin scorers out with illness and injury. GFC then was outpaced by district leading Oregon Tech (67-48) and NCAA University of Puget Sound (86-74) before topping Southern Ore-

gon (90-70), dropping the Willamette rematch (92-82), and beating Lewis and Clark State (86-74).

Senior forward Ray Willis leads the Bruin attack, putting through an average of 13.3 points a game, leading in rebounding at 8.7 an outing, and standing second in assists at 61. Also in double figure scoring are Phaynes Reeda at 12.9, Cozens at 12.4, and Steve Strutz at 10.9. Senior guard George Scott is the playmaker with 61 assists, and the Bruins are out-rebounding opponents 45.3 to 41.2.



Paul Cozens (45) passes ball to Tom Hewitt (24) as he races around screen by Ray Willis (31) in Bruin basketball action against University of Puget Sound.

Students Help Administer College

"How to Govern a College" isn't among the courses offered at George Fox, but there are a dozen students getting practical experience in that field this year.

The 12 are participating as full members on four major committees that set certain policies and directions for the college.

Students sit with Faculty Professional Growth, Student Affairs, Academic Policy and Teaching Skills Committees.

Students are appointed by George Fox President David LeShana after recommendation by Student Body President Tim Bletscher, a Portland senior.

Each committee is composed of seven faculty members and three students who have full voting powers.

Faculty terms are for one and two years with appointments made on indication of interest in serving.

The Teaching Skills Committee helps develop new modes of teaching and use of instructional materials. The Student Affairs Committee sets guidelines for student life and activities on campus and renders judgment on some discipline matters. The Academic Policy Committee determines rules and regulations on class credits, hours, and graduation standards and registration matters. The Professional Growth Committee seeks to upgrade abilities and interests of individual faculty members.

Picked to the Teaching Skills Committee are Connie Varce, Oregon City senior, in Christian education-physical education; Carol Jean Hadley, Portland sophomore in music education, and Robert Kistler, a Soldotna, Alaska, junior in biology.

Serving on the Student Affairs Committee are Martha Hardeman, Gladstone, Ore., junior in Christian ministries; Steve Duhrkoop, a Toppenish, Wash., senior in secondary education (social studies); and Louise Minthorne, a Lake Oswego senior in language arts.

Members of the Academic Policy Committee are Phil Biggs, a Harlowton, Mont., sophomore in contemporary ministries; Diane Sargent, a Rockaway, Ore., sophomore in biology, and Cliff Frazier, a Portland senior in chemistry.

On the Professional Growth Committee are Jon Bletscher, a Portland sophomore in biology; Paul Fodge, a Caldwell, Idaho, sophomore in mathematics.

Fourteen GFC Seniors Picked To 'Who's Who'

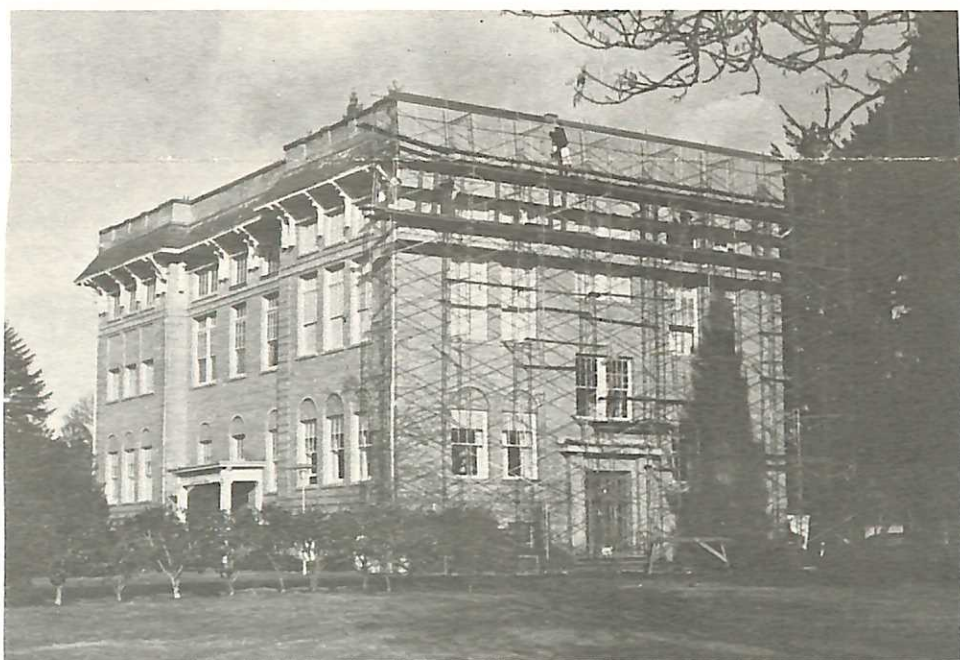
Fourteen George Fox College students will be listed in the 1974-1975 edition of *Who's Who Among Students in American Universities and Colleges*.

Selection is the highest honor awarded annually on campus. The students, all seniors, were selected on the basis of academic achievement, leadership on campus and activities on and off campus.

Picked for the national honors volume, now in its 42nd year, are Mark Ankeny, Newberg psychology major; Ann Barbour, Forest Grove communication arts major; Tim Bletscher, Portland biology major; Patti Bradshaw, Newport elementary education major; Kathy Kienitz, Big Timber, Mont., Spanish-Christian education major; Divonna Littlefield, Fowler, Kansas, music major, and Launi Manley, Missoula, Mont., physical education-religion major.

Others are Tim Minikel, Warren, Ore., music education major; Louise Minthorne, Lake Oswego, language arts major; Peggy Schwab, Connell, Wash., psychology-sociology major; Diana Sheets, Omak, Wash., biology major; Brad Smith, Oregon City psychology-sociology major; Jon Tippin, Whittier, Calif., biology major; and Connie Varce, Oregon City Christian education-physical education major.

Students were selected through a process involving the administration and students, and a campus-wide vote of sophomores, juniors and seniors and faculty members.



A face-lifting for GFC's 63-year-old Wood-Mar Hall.

College Landmark Gets Face-lifting

A part of campus history is coming down.

Wood-Mar Hall is surrounded by scaffolding as workers start on a \$20,000 project that will dramatically alter the appearance of the building constructed in 1911.

Being removed from the 55-foot-high building is the ornamental overhang that for years was believed to be red brick tile until investigation showed it was carefully designed tin. But college officials say the wood supporting the 63-year-old exterior design was rotting and could have become dangerous.

Workers in the next few weeks, in a major project, are removing the decoration to the base concrete block,

then will reface the top of the building with an aggregate surface.

With scaffolding erected, the workmen on their way down the building also will repaint, caulk and repair windows in the tall three-story building. The project is contracted by Ron Willcuts Construction, Newberg.

Wood-Mar Hall was originally built at a cost of about \$33,000 after a community fund drive spearheaded by Amanda Woodward and Evangeline Martin, who stumped the countryside with a horse and buggy raising funds, some coming from farm produce donated and resold. The building name comes from a combination of the first parts of the last names of the two Newberg pioneer women.

Today the building contains administrative offices for the college and a 500-seat chapel, the original one in the building, which was refurbished and is still in use after six decades.



A quartet of George Fox runners set a new world's record in the 24-hour, four-man relay running 225 miles, 168 yards to erase the old mark of 213, 904 yards set by the Goleta (Calif.) Striders in 1972. The runners took one-mile laps night and day through brisk Oregon weather, while volunteers took two-hour shifts keeping time, marking laps, and providing refreshments and morale boosts. Proudly showing their mile total, moments after setting the new mark, are (left to right) Dave Hamilton, a Portland junior; Mark Adamson, a Cherokee, Iowa, freshman; Darcy Staples, Milwaukie, Ore., sophomore, and John Thomas, a 1969 GFC grad from Newberg.