

2-1976

George Fox College Life, February 1976

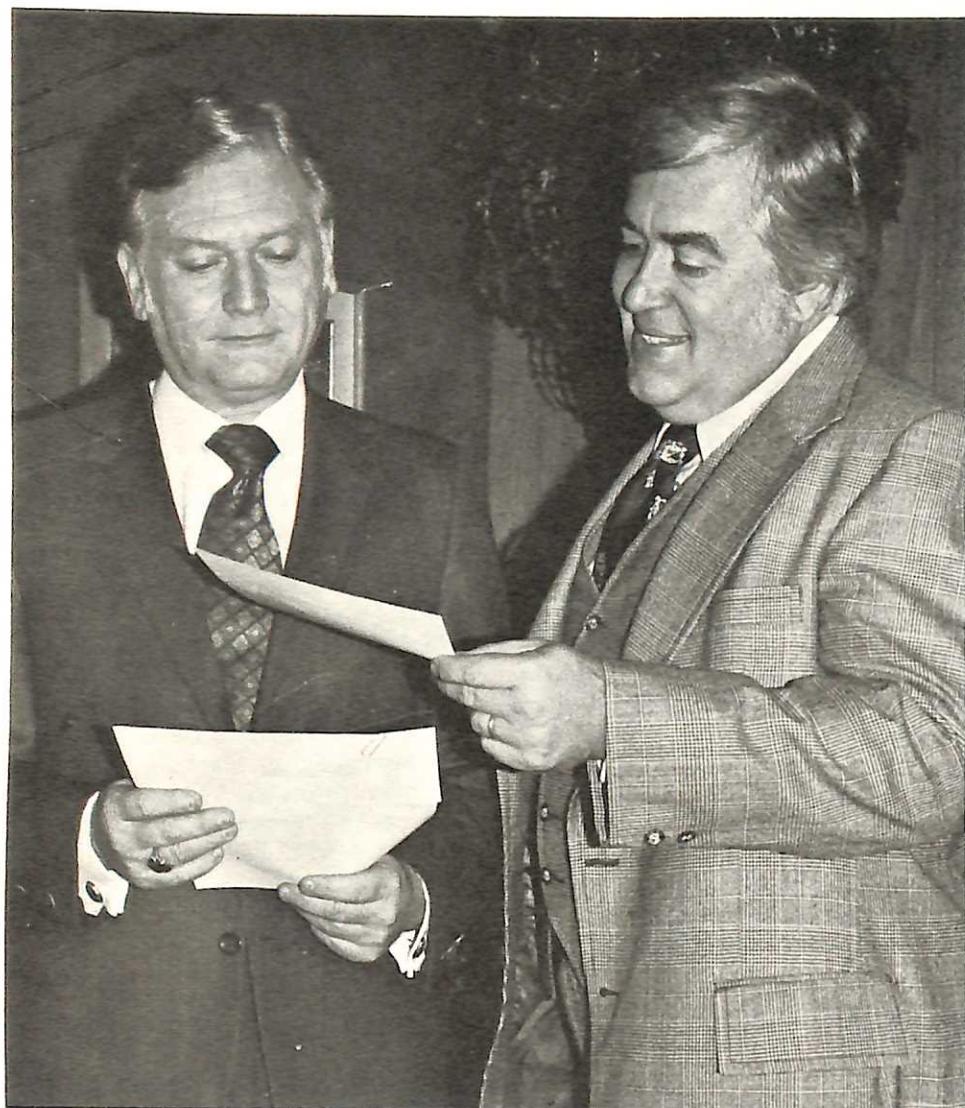
George Fox University Archives

Follow this and additional works at: http://digitalcommons.georgefox.edu/gfc_life

Recommended Citation

George Fox University Archives, "George Fox College Life, February 1976" (1976). *George Fox College Life*. Book 25.
http://digitalcommons.georgefox.edu/gfc_life/25

This Book is brought to you for free and open access by the Archives at Digital Commons @ George Fox University. It has been accepted for inclusion in George Fox College Life by an authorized administrator of Digital Commons @ George Fox University. For more information, please contact arolfe@georgefox.edu.



George Fox President David Le Shana (right) accepts check and notification of grant of \$1.5 million from the Murdock Charitable Trust, Vancouver, Wash. Dr. Sam Smith, foundation executive director, makes the presentation.

Gift of \$1.5 Million To Start Buildings

A single gift of \$1.5 million, the largest ever received, has been given to George Fox College by the M. J. Murdock Charitable Trust of Vancouver, Wash.

It will allow the college to begin immediately on the first phase of a master campus plan that includes a \$2.2 million physical education/sports complex and a \$1.5 million Fine Arts/Chapel center.

President David Le Shana said the college, with the gift, now has \$2.7 million on hand and plans to begin construction this spring on the sports center. Working drawings have now been authorized for the new 75,000-square-foot facility, while final fundraising is underway.

When that building is completed, the present 18,000-square-foot gymnasium will be "recycled" for the fine arts center in a major project that will include the addition of a 1,100-seat auditorium.

The Murdock Trust was created through the will of the late M. J. (Jack) Murdock, one of the founders of Tektronix, Inc. He was killed in an airplane accident in May of 1971.

Murdock cofounded the Beaverton oscilloscope manufacturing firm in 1946. He was lost in the Columbia River when his seaplane overturned in stormy water near Maryhill, Wash. He left an estate of more than \$85 million.

The Murdock Trust was established in June and places emphasis on requests from the Pacific Northwest.

Toward the Phase One campus expansion plan George Fox had previously raised \$1.2 million through several other major gifts and grants to the capital campaign launched earlier this year.

The sports center has been designed by world-famous architect Pietro Belluschi and the Portland architectural firm of Daniel, Mann, Johnson, Mendenhall. Belluschi won the 1972 Gold Medal of the American Institute of Architects. One of his most recent major works is the Julliard School of Music at Lincoln Center, New York.

The new George Fox structure has been designed by Belluschi to become a showplace for the lumber and wood products industry of the Northwest.

With seating for up to 2,500, the new sports complex also will become a new center for large convocations and conventions to be held on the campus. It will be built with two levels overlooking Hess Creek canyon on the east side of the campus. The location was the top choice by a site selection committee composed of faculty, administrators, students, and professional consultants.

The present gym to be replaced was built in 1948 and is now inadequate because of large enrollment gains, increasing need for flexibility, and interest by spectators in Bruin sports events. As it is vacated it will be completely renovated and more than doubled in size.

The present gymnasium area itself will be divided into two floors with band and orchestra rooms, choral areas, and offices for music and religion departments.

By its exterior design, the new chapel/fine arts complex, designed by Vancouver architect Don Lindgren, is to become a new focal point for the overall campus with its styling to be the backdrop for a new campus entrance.

Both buildings of the Phase One project to be launched are adequate for 800 to 1,000 students expected by 1985, when enrollment is to be stabilized for maximum operating efficiency while maintaining a small-college atmosphere.

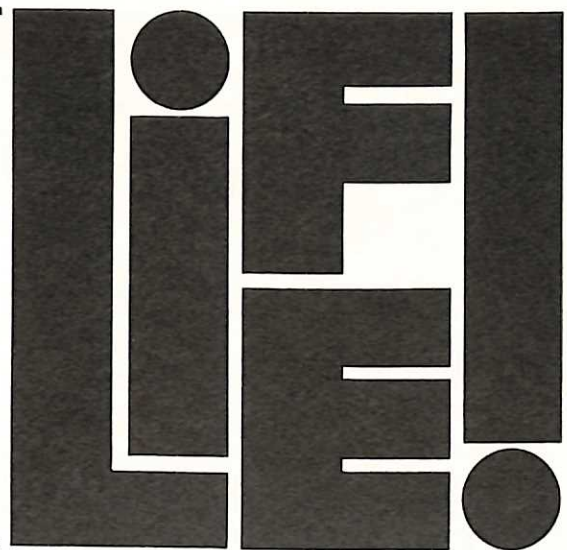
The 85-year-old college this year posted a 16 percent student enrollment climb, the highest in Oregon, and has 556 students.

Le Shana said the \$1.5 million gift is a "tremendous help" in allowing the college to "continue providing quality higher education emphasizing values."

"We are grateful to the directors of the foundation for their support of higher education in the Northwest and for this outstanding gift," Le Shana said. "We are excited about what is in the near future with these new buildings and we hope to be good stewards of this help to us."

George
Archives

GEORGE FOX COLLEGE Feb. '76



GFC's Myton Selected As State Teacher Coordinator

David Myton, director of teacher education at George Fox College, will become Oregon's next Coordinator of Teacher Education.

Myton will take over the position with the state's Teachers Standards and Practices Commission March 15.

Myton, a member of the George Fox faculty since 1966, will replace James Wallace, the first to fill the two-year-old position. He resigned the post Aug. 31.

The position involves coordination of teacher education programs at 14 approved teacher training colleges in Oregon. Accreditation and approval must be renewed every five years by the institutions.

The Teachers Standards and Practices Commission was launched as a state agency in 1965 as an advisory board to the Oregon Board of Education. In 1973 the state legislature transferred complete authority for teacher education and accreditation to the commission, making Oregon the first state in the nation with a commission with such powers and responsibilities.

In addition to supervising accreditation review teams, Myton will develop curricula for the colleges and serve as a resource person.

Myton, who holds a doctorate in education from Ohio State University, is 39. He has represented independent colleges and universities on the 17-member Teachers Standards and Practices Commission since 1972.

For the last three summers Myton has served as an education specialist for the commission, developing printed material and revising standards for approval of college and teaching education programs.

At George Fox, Myton has been professor of education and chairman of the division of education. In his tenure at George Fox Myton has helped the college receive maximum accreditation for teacher education in eight areas and has directed its self-study reports on which accreditation is based. He will remain at the college through winter term, again supervising an accreditation review by the commission that he will later head. He says he is "excited about the opportunities for work at the state level."

President David Le Shana says he has "mixed emotions" about losing Myton from the college's faculty. "It's an honor for George Fox and shows the caliber of our faculty, but he's going to be very difficult to replace."

Portland Dinner for GFC Draws 1400; Sets Record

More than 1,400 persons attended the second annual Portland Area Dinner for George Fox College Dec. 9.

The huge turnout made the occasion the largest sit-down dinner ever held for any college in Oregon. The near turn-away crowd overflowed the Grand Ballroom of the Portland Hilton Hotel, Oregon's largest dining facility, as tables were placed in the normal reception-hallway area to accommodate those wanting to participate in the evening.

The Christmas-themed event drew Portland television coverage and was personally staffed by the state's two largest newspapers, who sent reporters.

The attraction? Apparently the college itself. Unlike the annual Southern California Dinner for George Fox, now in its ninth year at Disneyland Hotel, the Portland dinner had no "big name" entertainment.

Following a dinner of stuffed Capon Corden Bleu, guests were treated to a performance by GFC's touring pianists "Tim and Roger," both 1975 graduates now performing nationwide following the release of their album, and the college's A Cappella Choir.

President David Le Shana narrated a new multi-image presentation "Formula for the Future," in the premier for the presentation, which will be featured at other dinners. Told are the college's successes that include a record enrollment gain that led Oregon this year, balanced budgets, a championship-caliber athletic program, in-

creased academic strengths, and plans for major new building complexes.

The dinner was chaired by Bill Field, a Board of Trustees member, and schedule coordinator for the Carnation Co., Portland. It was underwritten by a friend of the college.

"People acquainted with George Fox are proud of what is happening," Field said. "We believe more ought to know, however, and planned this special occasion to make it possible."

A week prior to the Portland Dinner the premier dinner for the Seattle area was held in that city's Washington Plaza Hotel. About 300 participated from throughout the Puget Sound area.

The program featured GFC student body president Jeffrey Rickey, Portland; Gene Habecker, dean of student affairs; Lee Nash, chairman of the Division of Social Science, and Jerry Friesen, associate professor of music, who provided a vocal series.

Also featured were Duo Pianists Tim Bletscher and Roger House, and Athletic Director Lorin Miller, who has led the college's basketball teams to five straight NAIA district playoff berths.

Philip Butler, president of Interchristo, emceed the program. A 10-member committee headed by Phil Harmon (1958 George Fox alumnus), president of Harmon and Associates, a Seattle Insurance firm, planned the dinner, which also was underwritten by friends of the college.



Homecoming 1976 featured this five-member court headed by Queen Ginger Kilgore (center), a Salem junior. Others are (left front) Laurie Stanhope, a Billings, Montana, freshman; and Denise Crecelius, a Newberg sophomore, and (back row) Cheryl Wacker, Portland freshman, and Mary Tusan, Salem senior. Homecoming activities Feb. 7 included, in addition to a Friday night coronation program and band concert, a Saturday alumni-student chapel, campus tours and open house, a reception for women and former faculty members, and a basketball game in which the Bruins downed Lewis-Clark State, 97-69.

Who Goes to George Fox? Statistics Reveal It All

A 16 percent enrollment increase fall term made George Fox Oregon's fastest growing college.

Statistical breakdown shows the largest push in registration is coming from Oregonians.

Although the college has students from 20 states and four nations, the biggest climb has been the increase from 289 to 354 in the number of Oregonians on campus. The 65 new students represent a 22 percent jump in one year. Oregon contributes more than six of every 10 students at 63.5 percent.

Registration figures show four states (Oregon, Washington, California and Idaho) contribute nearly 90 percent of the student body. Students from Washington increased from 56 to 61, a 10 percent climb to compose 11 percent of the total. Idaho students number 27, 4.8 percent of the student total.

The 85-year-old college also reports more Friends (Quaker) students on campus than at any other U.S. college. Forty percent, or 225 students, list the Friends Church as their preference. That compares to 188 students last

year and represents a 20 percent increase in one year.

Despite the large number of Friends students, more than half of the college's students are not members of the denomination, with 39 church bodies represented on campus.

The number of Baptist students has increased 50 percent from 40 to 60 students to represent 10.7 percent of the student body. Evangelical Church of North America students have increased by 9 percent to 63, or 11.3 percent of the student enrollment.

Free Methodist students number 17, the same number of Bible church students, each with 3 percent of the student total. Just eight students, or 1.4 percent of the total enrollment, report no denominational preference.

Students, through a national recruiting effort by the college's admissions office, have come from Hawaii and Alaska on the West to New York and North Carolina on the East coast. Represented on campus are Sierra Leone, Kenya, Canada, Vietnam, and Nepal.

Admissions officials report student applications for next fall already are exceeding the number for this fall's entering class, which increased by more than 25 percent.



More than 1,400 persons fill grand ballroom of Portland Hilton Hotel, Oregon's largest formal banquet facility, as they participate in the second annual Portland Area Dinner for George Fox College. The dinner (see story page one) was the largest ever held for a college in Oregon.

Sunday: It Brings Quiet, Involvement for Students

When Sunday rolls around each week the George Fox College campus is not what you would call a center of activity.

It seems students, up to 98 percent of them, are attending morning worship services.

A student poll by Chaplain Ron Crecelius shows 98.8 percent of the students report they either regularly or occasionally attend church. Eighty-four percent report it is on a regular basis. Just 1.2 percent say they never attend. The poll involved 251 students, more than half of the student body.

Sunday school is not quite as popular, but it still draws 83 percent of the students, 45.5 on a regular basis, 37.5 percent occasionally. Seventeen percent say they never go.

Evening service also is popular, with 88.9 percent saying they attend. But fewer attend on a regular basis with 39.1 percent saying they always attend, and 49.8 percent attending sometimes.

George Fox students represent more than 30 denominations and have a choice of 23 churches in Newberg. Others attend services in their hometowns or help with churches in Oregon and Washington.

Midweek church services do not get as much attention as Sunday programs, with 39.6 percent saying they attend, 16.3 percent regularly. Just over 60 percent do not attend a church. That's attributed to the on-campus Wednesday night "Collegiate Challenge" program with services aimed especially for the college student body.

Of the students polled, nearly one third, or 82, indicated some involvement in a church responsibility. Of those reporting a position, 30 percent are Sunday school teachers, 29 percent are youth workers, 24 percent are involved with a music program, 17 percent help with children's church, and 5 percent serve on planning committees. Nine percent are involved in other miscellaneous positions.

GFC Professor Instructs Nicaraguan Workshop

One of the largest evangelistic crusades ever attempted had the helping hand of a George Fox professor.

Robert Gilmore, director of instructional media at George Fox College, was in Managua, Nicaragua, in November as part of a school of communications and evangelism for pastors and youth, held concurrently with a massive communications effort to secure a live listening audience of up to 100 million persons in 22 countries in Latin America.

The 22-day crusade sponsored by Overseas Crusades involved a network that included a stationary communications satellite over the Atlantic, short-wave radio, local radio stations in 30 target cities, special television programs in the same number, and an originating center before 20,000 in a baseball stadium in Managua.

Featured was Luis Palau, called the "Billy Graham of Latin America."

Gilmore, a George Fox faculty member since 1964, was selected for help because of his electronic media knowledge and for his ability with the Spanish language.

Gilmore, who teaches Spanish at George Fox, has a background of high school and college Spanish instruction, spent one year in Costa Rica in language training, then for three years was a missionary in Guatemala under California Yearly Meeting of Friends Church.

He later received a master's degree from the University of Southern California in education, with emphasis on instructional media skills.

For Gilmore the return to Central America with his wife was the first time they had been back in 11 years. While in Managua Gilmore conducted a two-day workshop on the use of media in Christian education and



Professor Bob Gilmore and wife Maurine.

evangelism. He used slides and overhead transparencies in teaching and took some of the equipment with him.

"Our goal was to help Christian leaders communicate the message of Christ with more clarity and appeal," Gilmore says.

The evangelistic crusade was designed to reach all major cities in the Spanish-speaking world, including Spain and some cities in the southern United States.

It has been the historic practice of George Fox College to provide equal opportunity in education and employment without regard to sex. This public notice is made in compliance with Title IX regulations.

GEORGE FOX COLLEGE
FEBRUARY 1976, PAGE 2



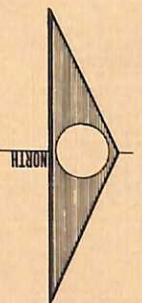
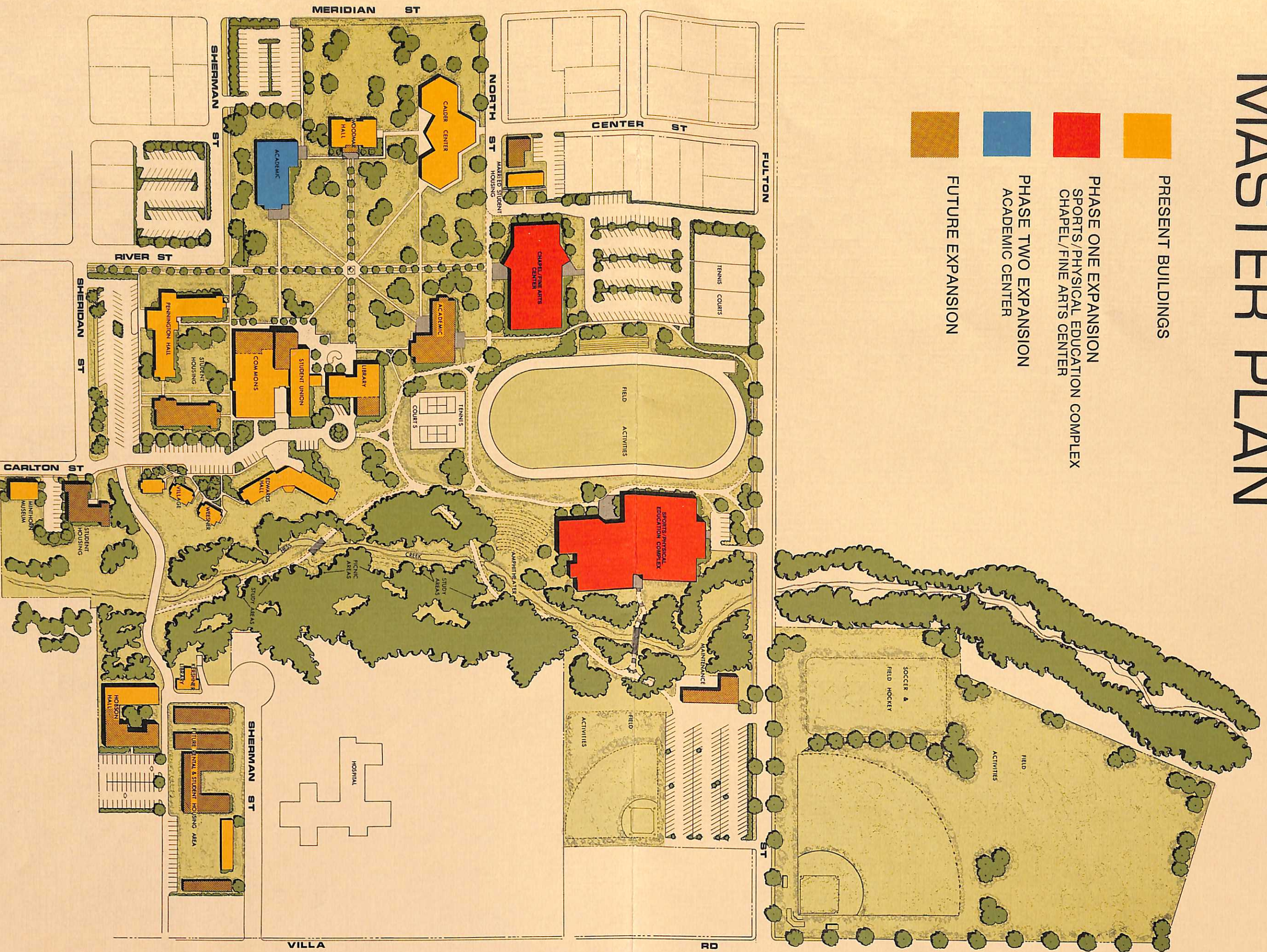
LIFE!

February 1976 Vol. 6, No. 1
Barry Hubbell, Editor
LIFE! is published bimonthly by George Fox College, Newberg, Oregon 97132. Distribution is free. Second class postage paid at Newberg, Oregon 97132.

STATEMENT OF OWNERSHIP, MANAGEMENT AND CIRCULATION (Act of August 12, 1970, Section 3685, Title 49, United States Code)		SEE INSTRUCTIONS ON PAGE 2 (REVERSED)
1. TITLE OF PUBLICATION GEORGE FOX COLLEGE "LIFE!"		2. DATE OF FILING 10-14-75
3. FREQUENCY OF ISSUE SIX TIMES A YEAR		
4. LOCATION OF HEADQUARTERS OF PUBLICATION (Street, City, County, State, ZIP Code) (Not printed)		
5. LOCATION OF THE HEADQUARTERS OF THE PUBLICATION (Not printed)		
6. NAME AND ADDRESS OF PUBLISHER, EDITOR AND MANAGING EDITOR (Not printed)		
7. OWNER (If owned by a corporation, its name and address must be stated and also immediately thereunder the names and addresses of stockholders owning or holding 1 percent or more of total amount of stock. If not owned by a corporation, the names and addresses of the individual owners must be given. If owned by a partnership or other unincorporated firm, its name and address, as well as that of each individual must be given.)		
8. KNOWN BONDHOLDERS, MORTGAGEES AND OTHER SECURITY HOLDERS OWNING OR HOLDING 1 PERCENT OR MORE OF TOTAL AMOUNT OF BONDS, MORTGAGES OR OTHER SECURITIES (If none so state, "None")		
9. FOR OPTIONAL COMPLETION BY PUBLISHERS MAILING AT THE REGULAR RATES (Section 1312, Postal Service Manual) a. If the publication is published weekly, the publisher must submit a statement of circulation for each issue. b. If the publication is published biweekly, the publisher must submit a statement of circulation for each issue. c. If the publication is published monthly, the publisher must submit a statement of circulation for each issue. d. If the publication is published quarterly, the publisher must submit a statement of circulation for each issue. e. If the publication is published semi-annually, the publisher must submit a statement of circulation for each issue. f. If the publication is published annually, the publisher must submit a statement of circulation for each issue.		
10. STATEMENT OF CIRCULATION (Section 1312, Postal Service Manual) a. Total number of copies (Net press run) b. Paid circulation (Sum of paid circulation by mail, carrier or other means and paid circulation by other means) c. Total paid circulation (Sum of paid circulation by mail, carrier or other means and paid circulation by other means) d. Copies distributed to news agents, but not sold e. Total distribution (Sum of paid circulation and copies distributed to news agents, but not sold) f. Office use, left overs, unsold copies, spoiled after printing g. Total (Sum of a, b, c, d, e, f, g, h, i, j, k, l, m, n, o, p, q, r, s, t, u, v, w, x, y, z, aa, ab, ac, ad, ae, af, ag, ah, ai, aj, ak, al, am, an, ao, ap, aq, ar, as, at, au, av, aw, ax, ay, az, ba, bb, bc, bd, be, bf, bg, bh, bi, bj, bk, bl, bm, bn, bo, bp, bq, br, bs, bt, bu, bv, bw, bx, by, bz, ca, cb, cc, cd, ce, cf, cg, ch, ci, cj, ck, cl, cm, cn, co, cp, cq, cr, cs, ct, cu, cv, cw, cx, cy, cz, da, db, dc, dd, de, df, dg, dh, di, dj, dk, dl, dm, dn, do, dp, dq, dr, ds, dt, du, dv, dw, dx, dy, dz, ea, eb, ec, ed, ee, ef, eg, eh, ei, ej, ek, el, em, en, eo, ep, eq, er, es, et, eu, ev, ew, ex, ey, ez, fa, fb, fc, fd, fe, ff, fg, fh, fi, fj, fk, fl, fm, fn, fo, fp, fq, fr, fs, ft, fu, fv, fw, fx, fy, fz, ga, gb, gc, gd, ge, gf, gg, gh, gi, gj, gk, gl, gm, gn, go, gp, gq, gr, gs, gt, gu, gv, gw, gx, gy, gz, ha, hb, hc, hd, he, hf, hg, hh, hi, hj, hk, hl, hm, hn, ho, hp, hq, hr, hs, ht, hu, hv, hw, hx, hy, hz, ia, ib, ic, id, ie, if, ig, ih, ii, ij, ik, il, im, in, io, ip, iq, ir, is, it, iu, iv, iw, ix, iy, iz, ja, jb, jc, jd, je, jf, jg, jh, ji, jj, jk, jl, jm, jn, jo, jp, jq, jr, js, jt, ju, jv, jw, jx, jy, jz, ka, kb, kc, kd, ke, kf, kg, kh, ki, kj, kk, kl, km, kn, ko, kp, kq, kr, ks, kt, ku, kv, kw, kx, ky, kz, la, lb, lc, ld, le, lf, lg, lh, li, lj, lk, ll, lm, ln, lo, lp, lq, lr, ls, lt, lu, lv, lw, lx, ly, lz, ma, mb, mc, md, me, mf, mg, mh, mi, mj, mk, ml, mm, mn, mo, mp, mq, mr, ms, mt, mu, mv, mw, mx, my, mz, na, nb, nc, nd, ne, nf, ng, nh, ni, nj, nk, nl, nm, nn, no, np, nq, nr, ns, nt, nu, nv, nw, nx, ny, nz, oa, ob, oc, od, oe, of, og, oh, oi, oj, ok, ol, om, on, oo, op, oq, or, os, ot, ou, ov, ow, ox, oy, oz, pa, pb, pc, pd, pe, pf, pg, ph, pi, pj, pk, pl, pm, pn, po, pp, pq, pr, ps, pt, pu, pv, pw, px, py, pz, qa, qb, qc, qd, qe, qf, qg, qh, qi, qj, qk, ql, qm, qn, qo, qp, qq, qr, qs, qt, qu, qv, qw, qx, qy, qz, ra, rb, rc, rd, re, rf, rg, rh, ri, rj, rk, rl, rm, rn, ro, rp, rq, rr, rs, rt, ru, rv, rw, rx, ry, rz, sa, sb, sc, sd, se, sf, sg, sh, si, sj, sk, sl, sm, sn, so, sp, sq, sr, ss, st, su, sv, sw, sx, sy, sz, ta, tb, tc, td, te, tf, tg, th, ti, tj, tk, tl, tm, tn, to, tp, tq, tr, ts, tt, tu, tv, tw, tx, ty, tz, ua, ub, uc, ud, ue, uf, ug, uh, ui, uj, uk, ul, um, un, uo, up, uq, ur, us, ut, uu, uv, uw, ux, uy, uz, va, vb, vc, vd, ve, vf, vg, vh, vi, vj, vk, vl, vm, vn, vo, vp, vq, vr, vs, vt, vu, vv, vw, vx, vy, vz, wa, wb, wc, wd, we, wf, wg, wh, wi, wj, wk, wl, wm, wn, wo, wp, wq, wr, ws, wt, wu, wv, ww, wx, wy, wz, xa, xb, xc, xd, xe, xf, xg, xh, xi, xj, xk, xl, xm, xn, xo, xp, xq, xr, xs, xt, xu, xv, xw, xx, xy, xz, ya, yb, yc, yd, ye, yf, yg, yh, yi, yj, yk, yl, ym, yn, yo, yp, yq, yr, ys, yt, yu, yv, yw, yx, yy, yz, za, zb, zc, zd, ze, zf, zg, zh, zi, zj, zk, zl, zm, zn, zo, zp, zq, zr, zs, zt, zu, zv, zw, zx, zy, zz)		

GFC CAMPUS MASTER PLAN

- PRESENT BUILDINGS
- PHASE ONE EXPANSION
SPORTS/PHYSICAL EDUCATION COMPLEX
CHAPEL/FINE ARTS CENTER
- PHASE TWO EXPANSION
ACADEMIC CENTER
- FUTURE EXPANSION



Campus Plan by
ROBERT E. MEYER INC.
Beaverton, Oregon

1960	Paul Cammack Maurice Chandler Mercedeth Hester Fieldhouse Richard McDonald Eugene Roberts Jane Weimer Wilcutts Robert Wilcutts Lyle Wilson Jo Ann Wohlford	Paul Cammack Maurice Chandler Mercedeth Hester Fieldhouse Richard McDonald Eugene Roberts Jane Weimer Wilcutts Robert Wilcutts Lyle Wilson Jo Ann Wohlford	1961	Barbara Janson Cammack Coralie Mae Williams Mueller Ronald Wilcutts	1962	Nadine Brood E. H. Craven Marjorie Ritchey Grover Duane Fodge Barbara Morse	1963	Florence Angielo Darleen Stands Church Robert Church Robert Johnson Daniel Roberts Myrna McCall Williams Elma McCracken Witte	1964	Lon Fendall Raefene Barnes Fendall Barry Hubbard Dean Gilbert Valerie King David Dryke Lloyd Pruitt Marilyn Hill Pruitt Limes Chapman Stahlnecker	1965	Janet Beals Janet Sweat Bell Donald Brown Diane Hardman Hopper Karen Thornburg McConaughy Alice Hampton Maurer Nicholas Maurer Regina Debele Mainwaring Anne Thornburg Roberts Ronald Stahlnecker Robert Thompson	1966	John Baker Janice Kennon Beals Theresa Kunkel Bowen Diane Ball Bradley George Burnett Sandra Cornell Joanne Rhodes Halgren Rex Lanham Marcus Lind Roy McConaughy Phyllis McCracken Howard Macy Jerry Sandoz Carolyn Hampton Stansell Janice Stansell Glenn Bensen Thompson Kenneth Vandenhoeek Rachel Baker Vandenhoeek	1967	Jon Bishop Marta Cammack Bishop John Halgren Barbara Baker Marjorie Brood Dean Griffith Mike Jarvill Dale Rinar Lawrence Newlin Rinar Lawrence Roberts John Sivkoff	1968	Marion Mendenhall Beutler Ralph Beutler Gary Blackmar Karlja Jeikmann Blackmar John Boersma Jim Bradley Jeanette Brown Marlene West Burnett Phyllis Cole Sherry Ellis Merlin Glanzman Lowell Graves Anne Heathman Nancy Perry Hodson Cerry Kimberly Charmaine Langmack Kuhn Maui M. Macy Stanley Thornburg Ellen Wheeler	1969	Gary Albers Dave Altender Bruce Ankeny Dorian Bales Eunice Womble Bales Michael Boehme Gordon Grisman James Durcan Myr McCullough Myra Strasburger McCullough Jean Thomas Macy Margaret Williams Macy Aram Marshnglian Pam Marks Paul Miller Marlene Roberts Porter Mary Jo Sivkoff Marty D. Stapp Robert Swatt Kenneth Williams Roger Wyatt	1970	Janet Lund Albers Greta Edwards Ankeny Judi Birch Bill Carstens Herald Fodge	David Harmon John Johnson Pam Todd Kimberly Gary Macy Margaret Astleford Macy Charles Campbell Maier Paul Meier Dean Rinar Helen Mendenhall Rinar Cliff Samuelson Leta Childs Samuelson Garry Sloan Patty Schatz Sloan Cathy Clites Thornburg Donald Wachlin Margaret Palm Wachlin 1971	Beverly Knight Carr Cyril Carr Valerie Crooks Gwen McConaughy Fodge Pamela Vanderhoff Garcia Nancy Gwilym Dun Hill Susan Tish Jackson Kathleen Jensen Marilyn Gordon Jensen George Kirby Randy Morse Marilyn Fang Douglas Peterson Elise Shaw Jesse Zimrow Sweatt Marvin Walker 1972	Phil Brock Cieta Thornburg Crisman Glenda Housne Gilroy Steve Gilroy Corilda Grover John Holton Linda Calkins Holton Gary Jackson Sharon Dunlap Jackson Kenneth Johnson Vicki Ankeny Johnson Dorothy Ball Kirby Patt Martin Judy Warner Miller Stan Morse Bill Pruitt 1973	John Beck Martha Davonport Beck Joyce Brazas Wayne Elassasser Betty Ball Howard David Krupp Phyllis Miller Krupp John Macy Shirley Miller Parks Vic Racicot Roberta Zimmerman Rowe Eric Shimabukuro 1974	Bruce Allen Melanie Burson John Chenevert Charles Friesen Ken Greenman Charles Howard Charles Perry Morse Colleen Rohde Pankratz David Powell Robert Rowe Mike Wirta 1975	John Campbell Karen Knight Macy 1976	Kathy Johnson Brown Judith Craven Friesen Northwest Yearly Meeting of Friends Churches Boise, Idaho Caldwell, Idaho Camas, Wash. East Wenatchee, Wash. Eugene, Ore. Greater Seattle, Wash. Hartnell, Idaho Hillboro, Ore. Hillsboro, Ore. Idaho Holly Park—Seattle, Wash. Homedale, Idaho Klamath Falls, Ore. Leniah—Portland, Ore. Lynwood—Portland, Ore. Lyndford, Ore. Melba, Idaho Meridian, Idaho Metolius, Ore. Nampa, Idaho Newberg, Ore. Northwest Yearly Meeting Headquarters North Valley—Newberg, Ore. Olympic View—Tacoma, Wash. Quincy, Wash. Redwood—Portland, Ore. Rose Valley—Kelso, Wash. Sherwood, Ore. Silverton, Ore. South Salem—Salem, Ore. Spokane, Wash. St. Paul, Idaho Talent, Ore. Vancouver, Wash. Vancouver First, Wash. West Chehalis—Newberg, Ore.	California Yearly Meeting of Friends Churches Bel Berkeley California Yearly Meeting East Whittier First Friends Friends Alaska Mission, Kotzebue
------	--	--	------	---	------	---	------	---	------	--	------	--	------	--	------	---	------	--	------	---	------	--	---	---	--	--	--	--	---	---

COMBINED ASSETS AND LIABILITIES--

Year	Assets (Thousands)	Liabilities (Thousands)
1969	\$4,766	\$2,451
1970	\$4,790	\$2,562
1971	\$5,015	\$2,717
1972	\$5,162	\$2,315
1973	\$6,238	\$2,461

ASSETS

LIABILITIES

COMBINED ASSETS

% INCREASE

COMBINED LIABILITIES

% INCREASE

1969 1970 1971 1972 1973

\$8,000
Thousands

7,000

6,000

5,000

4,000

3,000

2,000

1,000

0

14.0

21.7

4.5

4.7

2.9

21.8

6.3

\$2,451

\$2,562

\$2,717

\$2,315

\$2,461

\$4,766

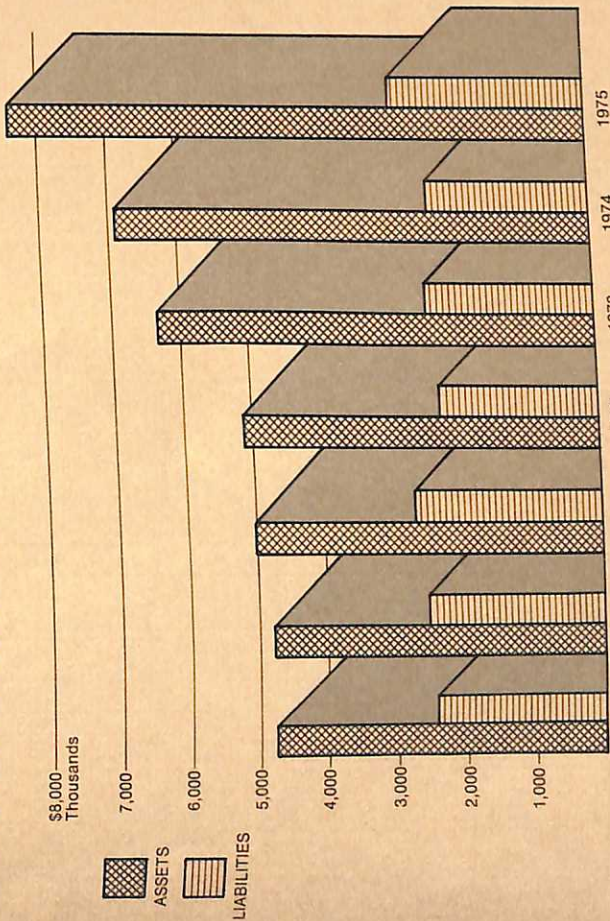
\$4,790

\$5,015

\$5,162

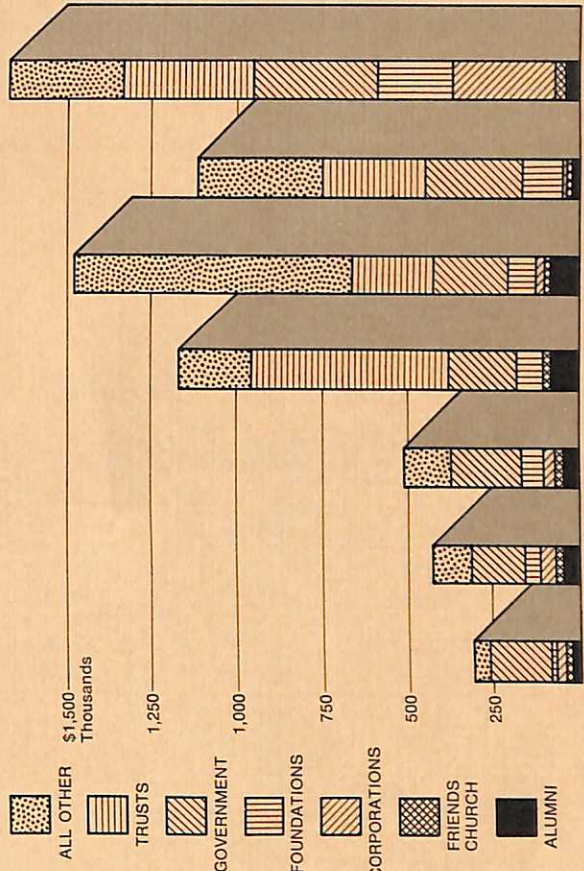
\$6,238

COMBINED ASSETS AND LIABILITIES—ALL FUNDS

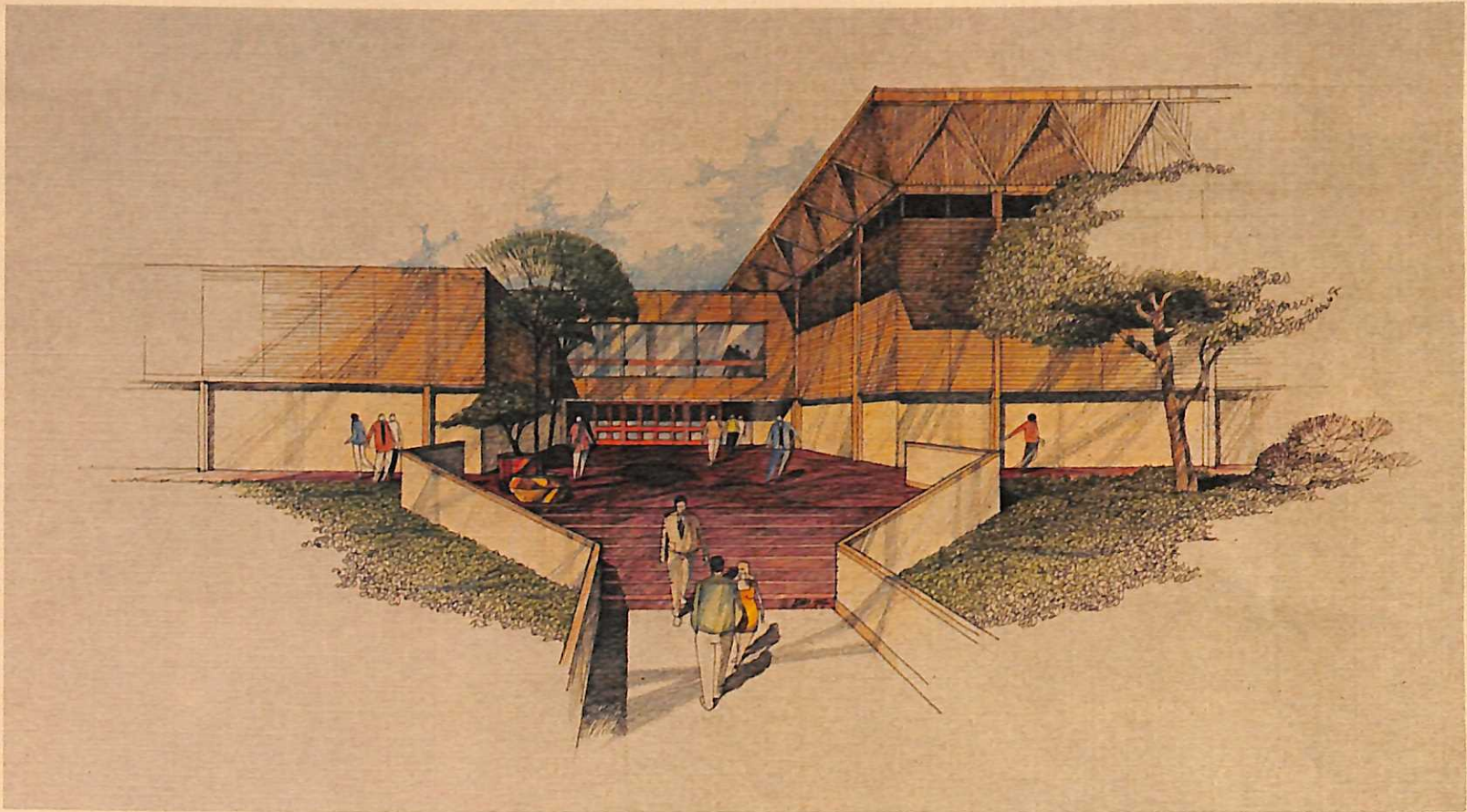


	1969	1970	1971		1972
COMBINED ASSETS	\$4,766	\$4,790	\$5,015	\$5,162	\$6,288
			2.9	2.8	8.9
INCREASE	21.7	0.5	4.7	\$2,335	\$2,436
				(14.8)	(5.1)
COMBINED LIABILITIES	\$2,451	\$2,562	\$2,717	\$2,461	
INCREASE	14.0	4.5	6.0	6.3	

GIFTS AND GRANTS—ALL FUNDS



TOTAL	\$307	\$416	\$506	\$1,169	\$1,481	\$1,123	\$1,672
% INCREASE	13.7	35.5	21.6	131.0	26.7	(24.2)	48.9



SPORTS/PHYSICAL EDUCATION COMPLEX

One of the most pressing needs on the George Fox campus is for a complete, modern sports and physical education complex. The existing gymnasium, constructed in 1948 by college labor, has neither the size nor the flexibility for our present enrollment of 550.

George Fox College currently has a prominent basketball team and actively competes in baseball, tennis, track, and soccer. Because we have a residential college (fewer than 15 percent of the students commute), school athletics and physical education programs are major activities on campus. An intermixing of athletics and physical education into the curriculum is an important part of our total educational program.

This modern wooden structure, designed by Pietro Bel-luschi, will be a showplace for the lumber and wood products industry throughout the North-west.

COST: \$2,200,000



Office of the President

February 1976

Dear Friends,

Many people ask how a Christian college can survive in today's world? The answer is the miracle of God working through people!

After a great deal of prayer and preparation, a little over a year ago George Fox College announced it was launching a \$3.7 million fund drive. The funds from the drive were to construct a new Sports/Physical Education Complex and a Chapel/Fine Arts Center. This was the largest capital expansion drive ever to be attempted by the college, the only one since two local women by horse and buggy collected \$30,000 in 1910.

As a result of God's blessing, George Fox College now has received almost \$3 million toward this goal. We have not written before requesting your contribution because we felt we would first need to demonstrate that we could and would succeed. Success is on the horizon and we want you to share it with us. Through your pledge we can complete our victory.

Please give this your immediate attention, read the attached envelope carefully, and join with us in creating one of the most outstanding Christian college successes of this decade.

Cordially,

David C. LeShana
David C. Le Shana

DLS: gj
Enclosure

GEORGE FOX COLLEGE / NEWBERG, OREGON 97132

An old man traveling a lone highway,
Came, at the evening cold and gray,
To a chasm vast and deep and wide.
The old man crossed in the twilight dim,
The sullen stream held no fear for him;
But he turned when safe on the other side
And built a bridge to span the tide.

"Old man," said a fellow pilgrim near,
"You are wasting your strength by building here;
Your journey will end with the ending day,
You never again will pass this way;
You've crossed the chasm, deep and wide,
Why build this bridge at evening tide?"

The builder lifted his old gray head;
"Good friend, in the path I have come," he said,
"There followeth after me today
A youth whose feet must pass this way.
This chasm that has been as naught to me
To that fair-haired youth might a pitfall be;
He, too, must cross in the twilight dim;
Good friend, I am building this bridge for him."



"... the miracle of God working through people!"

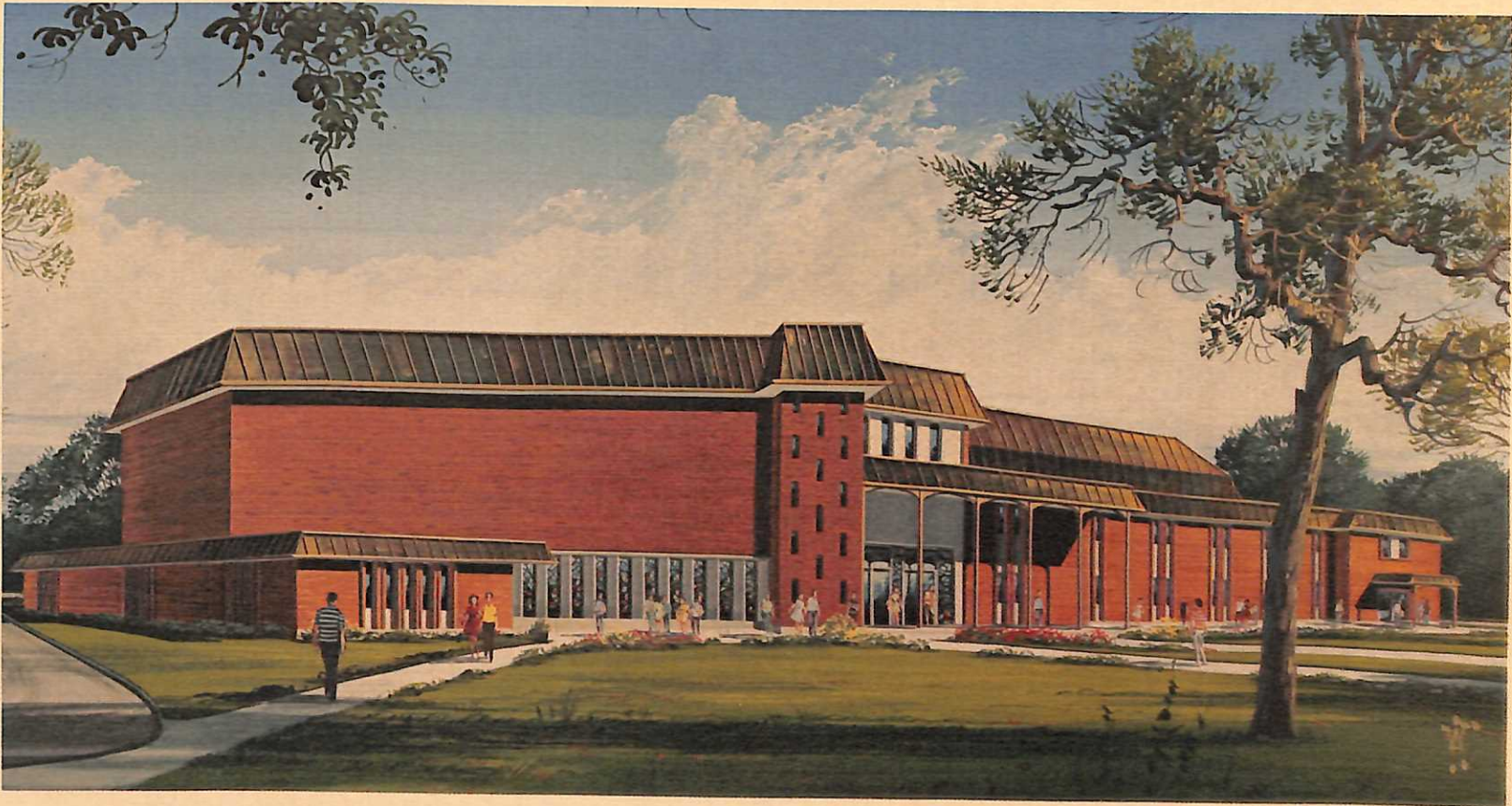
CHAPEL/FINE ARTS CENTER

Completion of the new physical education and sports complex will free the existing gymnasium for renovation. Though too small for athletics, it can be efficiently renovated into a fine arts department, and with some new construction and face-lifting it will house our Fine Arts/Chapel Center.

This construction and remodeling will give us a much needed chapel/auditorium where the entire student body and faculty can gather for twice-weekly chapel programs. It also will be an excellent facility for music productions, special lecture presentations, and community events.

In addition, the facility will house new classrooms and office space needed with the increasing George Fox enrollment.

COST: \$1,500,000





ALUMNI NEWS AND NOTES

GORDON (G48) and COLLEENE (BYBEE) (G49) ST. GEORGE were part of an eight-member group touring Guatemala, C.A., in October. The tour was sponsored by the California Yearly Meeting of Friends Church Board of Missions. He is pastor of the Friends Church in Phoenix, Ariz.

MARION CLARKSON (n51) is executive director of the Westminster Community Center, a church-related social service agency, in New Castle, Ind.

JUDITH RHOADS (G65) has earned a professional degree in commercial art and an applied science degree, and now is working in the art department of the Free Methodist Light and Life Publishing House, Winona Lake, Ind.

KEN VANDENHOEK (G66) is youth minister at the Friends Church in Boise, Idaho. Previously he held a similar position at the Clackamas Park Friends Church in Portland.

DR. JONATHAN BISHOP (G67) of Tualatin, Ore., won first place in the black and white division of the *Oregon Journal* American Bicentennial Photo Contest, "Festival, USA."

DONNA NEILSON (G68) is owner and manager of "Donna's Stitchery" in Portland, Ore.

RAND WINTERMUTE (G70) is northwest regional sales manager for Junior Sportswear, Portland.

TOM ACKERMAN (G71) is an agent for State Farm Insurance in Vancouver, Wash.

MICK GWILYM (G71) has taken a new position in Hemet, Calif., as a teacher in the newly opened school for the mentally retarded. He is completing work on a master's degree from the University of California, Riverside.

DAVID GREENWALD (G71) is teaching fourth grade at Serrano Elementary in Villa Park, Calif.

LYNETTE FAST (G72) is in her fourth year teaching third grade at Sandy, Ore. She spent two months in Central America on a tour with a mission family and visiting missionaries.

DALE HADLEY (G72) is agent for Preferred Risk Insurance Co., Portland, Ore.

BOB BOYD (G72) is teaching American Civilization at Rowland High School in Rowland Heights, Calif., where he is an assistant coach in varsity track and weight lifting.

RAY GARNER (G73) is an agent for Preferred Risk Insurance Co. in Portland, Ore.

JANE (SEDELL) (G74) TEMPLE and her husband David live in Deansboro, New York, where they run a dairy farm.

KEITH MERRETT (G74) teaches in Cashmere, Wash., and was chosen for *Who's Who in the State of Washington, 1975*.

RUTH RICARTE (G74) lives in Richland, Wash., where she works as a registered medical technologist at Kadlec Hospital.

NANCY (KUHN) (n75) WHIPPS is attending Multnomah School of the Bible and working at the Northwest Regional Office of Wycliffe Bible Translators in Portland, Ore.

MARRIAGES

CHARLES SMITH (G67) to Betty Sautter Nov. 26 in Portland.

JANE SEDELL (G 74) to David Temple June 20 in Vancouver, Wash.

SHERYL LAUGHLAND (n77) to ALLAN KIRKENDALL (G74) Dec. 28 in Yorba Linda, Calif.

SHARON FODGE (G74) to Bradley Brown June 28, in Caldwell, Idaho.

NANCY KUHN (n75) to Gordon Whipps March 21, Portland, Ore.

KATHRYN KEINITZ (G75) to Paul Westervelt Dec. 27 in Big Timber, Mont.

MARILYN HADLEY (n76) to WESLEY VOTH (G74) Dec. 27 in Newberg.

JUDITH KASSNER (n76) to Lukey Luther June 14 in Eugene, Ore.

JANELLE FENDALL (n76) to Steve Baron, Sept. 6, 1975, in Sherwood, Ore.

KATHLEEN HACKWORTH (n77) to Mark Williams, student, Sept. 6 in Greenleaf, Idaho.

CHRISTINA LUND (n77) to WAYNE FRAZIER (n77) Aug. 8 in Portland, Ore.

WENDY WORRELL (n77) to Howard Nodland Oct. 18 in Yorba Linda, Calif.

BIRTHS

EUGENE (G73) and Deenna GILLET, a boy, Kenneth Eugene, Aug. 13 in Portland, Ore.

Dan and KATHY (HINSHAW) (G73) Winnford, a girl, Elizabeth Anne, Sept. 11, in Forest Grove, Ore.

Jim and MARGARET (HATCH) (G70) HUGHES, a son, David Paul, Nov. 7 in Portland, Ore.

Mike and MAGGIE (GILMAN) (G71) DRESSEL, a son, Matthew Jacob, Nov. 2 in La Grande, Ore.

BILL (G72) and Faye PRUITT, a son, Jeremy Mark, Nov. 4 in Anaheim, Calif.

Larry and COLLEEN (RHODES) (n74) Pankratz, a girl, Amy Rochelle, born Dec. 13, in Opheim, Mont.

JOHN (G67) and JOANNE (RHODES) (G66) HALGREN, a boy by adoption, Justin Gunnar, born Dec. 22 in Springfield, Ore.

JACK (G54) and Waynel WING, a boy, Mark Andrew, born Dec. 4 in Inglewood, Calif.

1975 Graduates Report New Careers, Positions

NATHAN BAKER, associate pastor, Laurel Community Church, Hillsboro, Ore.

JULIE (BALES) PONDER, salesperson, Meier and Frank Co., Washington Square, Progress, Ore.

ROGER BARNETT, substitute teaching, Oregon City, Ore.

PATRICIA BATTILEGA, continued studies at GFC for secondary education.

TIMOTHY BLETSCHER, piano-duo with ROGER HOUSE (G75) on national tour for GFC.

REBECCA BONNEY, staff assistant, Sammamish Bible Camp, Bellevue, Wash.

SHIRLEY (BRADLEY) KYTE, life-guard and instructor, Chehalis Park and Recreation, Newberg, Ore.

KATHERINE BURMAN, bookkeeper, United Finance Co., Tigard, Ore.

REX CARTER, product manager, Duckett Building Maintenance, McMinnville, Ore.

CARYLA CARYL, salesperson, Lipmans, Washington Square, Progress, Ore. WAYNE CHAPMAN, painter, Shakey Paint Co., Beaverton, Ore.

DENNY CONANT, band director, Melba School Dist., Melba, Idaho.

CINDY CULVER, decorator-saleswoman, Ripley's Maple Shop, Beaverton, Ore.

GEORGE DORAN, medical technology student, University of Oregon, Portland.

STEPHEN DUHRKOOP, salesman, J.C. Penney Co., Washington Square, Progress, Ore.

KENNETH FORSETH, graduate student, Western Evangelical Seminary, Portland.

CLIFTON FRAZIER, repairman for Duplicating Specialties, Portland.

DEBORAH GOINS, housekeeping, Lake Seminole Hospital, St. Petersburg, Fla., also in Little Theater organization.

DAVID GREGG, mail room, Judson Baptist College, Portland, Ore.

CARL HANSON, Crown Zellerbach paper mill, Camas, Wash.

MATTHEW HEATHCO, teaching, Prairie City (Ore.) School District.

ROGER HOUSE, piano-duo with TIMOTHY BLETSCHER (G75) on national tour for GFC.

GARY HOUSER, clerk, Roth's IGA Foodliner, Silverton, Ore.

THOMAS HURT, teaching math, Oregon City (Ore.) High School.

CARL ITAMURA, sales representative, Gateway Volkswagen, Portland.

HARLAND KERCHER, substitute school teaching, Astoria, Ore.

KATHRYN (KIENITZ) WESTERVELT, secretary, Sweet Grass County Court House, Big Timber, Mont.

MICHAEL KIRKMAN, graduate student, Western Conservative Baptist Seminary, Portland.

JON KOCH, intern, Camp Tilikum, Newberg.

KATHY KOCH, secretary, North Valley Friends Church, Newberg.

FRANK KYTE, graduate student, Portland State University; GFC athletic trainer.

JOANN LEHMAN, employed by the Bumble Bee Seafood Co., Astoria, Ore.

JAN LINDGREN, staff assistant, Columbia River High School, Vancouver, Wash.

DIVONNA (LITTLEFIELD) THORNBURG, secretary, First Friends Church, Vancouver, Wash.

JEFF LOW, graduate student, Fuller Seminary, Pasadena, Calif.

LAUNI MANLEY, administrative assistant to dean of student affairs, GFC.

KEVIN MILLS, reading teacher, Prairie City (Ore.) School District.

TIM MINIKEL, graduate student, University of Portland.

LOUISE (MINTHORNE) SARGENT, teaching language arts and music, Clarkes Elementary School, Mulino, Ore.

MARSHA (JENSEN) OCKER, missionary, Friends Alaska Mission, Kotzebue, Alaska.

RONALD PARKS, graduate student, Regent College, Vancouver, B.C.

GAIL PETERSON, secretary, music department, GFC.

ED PIKE, graduate student, Western Conservative Baptist Seminary, Portland.

BRUCE PONDER, Allied Air, Newberg, Ore.

KAY RIDINGER, teaching, Perrydale School, Amity, Ore.

KATHY (SCHATZ) BROWN, teaching, R. A. Brown, Junior High School, Hillsboro, Ore.

TERESA SCHUNTER, teaching music, Wind River Arapahoe Indian Reservation, Wyo.

PEGGY SCHWAB, secretary, Parent Advisory Council consultant, Sunnyside, Wash.

GEORGE SCOTT, counselor for Child Care Workers, Corvallis, Ore.

DIANE SHEETS, salesperson, J. K. Gill, Washington Square, Progress, Ore.

RON STEIGER, youth counselor, Turning Point Boys' Ranch, Willows, Alaska.

JON TIPPIN, student, University of Oregon Medical School, Portland.

BETTY TREHARNE, employment counselor, United Minority Workers, Portland.

CONNIE VARCE, executive secretary, Oregon City (Ore.) Evangelical Church.

JULIA WHITAKER, graduate student in home economics, Oregon State University, Corvallis.

KATHRYN WILLIAMS, Christian Education Director, Metolius Friends Church; tutor, Madras (Ore.) High School.

ROBERT WUNDER, graduate student at Linfield College, McMinnville, Ore.; assistant basketball coach, GFC.

SHERYL WUNDER, teacher, Robert Frost School, Silverton, Ore.

ARLENE ZIMMERMAN, laboratory assistant, medical clinic, Salem, Ore.

Historic Tree Topples in Wind; Oak 35 Years Old at College Start

Strong easterly winds, gusting between 40 and 50 miles an hour, toppled a historic oak on the campus in November, narrowly missing a passing student. The tree was more than 120 years old.

"I heard it groaning and moaning and looked up and there it was coming down at me," startled Jon Strutz said. A freshman from Billings, Mont., Strutz was passing within three feet of the tree, which guarded the south entrance to Hester Gymnasium on campus.

"I dashed to the door and looked out and it was coming down," Strutz said later.

The towering 60-plus-foot tree, a yard wide at its base and gnarled and twisted at the top, lodged in the twin oak on the other side of the gym en-

trance. It took a crawler tractor to dislodge the tree and finish the falling process.

Because the college wanted to save the two old trees several years ago, the city's East North Street took a jog around them so they were not removed in a street widening and improvement project.

A 1935 GFC alumnus, Frank Cole, reported the trees were "good size when we were here." He says the trees, apparently saplings in the 1850's when first pioneers arrived in the area, were part of an old growth forest that at one time extended several blocks onto the campus further than now. The old tree was approximately 35 years old when the college was founded in 1891.

The old oak met its fate as firewood in campus residence hall fireplaces.





Basketball Bruins Win 19; Best Record in District

George Fox College's 1975-76 basketball season is one for the record books and one that will be talked about for years.

Pacing NAIA District 2 all year and the winningest small college in two states, George Fox wrapped it all up with a 19-8 record, the best ever in 11 years of NAIA competition.

For the last five seasons the Bruins have been Oregon's top independent squad and in the season-end playoffs. This year they moved to the top of the entire 13-team district—and out of the playoffs.

The unusual situation of leaving the best team out of the playoffs for a possible national berth occurred through a selection system in which district officials determined only the record with other independents (there are four) in the district would count. George Fox finished 5-2 in that creation of a mini "league," disapproved by Coach Lorin Miller from the start. The "winner" was Northwest Nazarene with a 5-1 record, but with a mediocre 14-11 record and in sixth place in district standings.

District officials admitted embarrassment. National officials said there was nothing they could do. The decision stood and team members and fans are

now learning the meaning of patience, understanding and injustice.

However, they'll live with a memory of a team that led the district all year, outscored opponents by the widest margin (7.5 points), and was at the top in shooting accuracy (.477).

It was also a team with one of the district's best players—sophomore center-forward Paul Cozens who produced points at the rate of 19.6 a game and grabbed rebounds at a 10.4 pace, near the top in both categories among district players. Cozens' .527 shooting percentage paced the team.

Junior guard Tom Hewitt set a new Bruin assist record for one season, collecting 138 in 27 games to top the record of 128 set last year by Ray Willis in 30 games.

Senior captain Steve Strutz wrapped up his Bruin career tied for seventh in scoring with 757 total points, a 6.94 rate, and the fourth best rate in all-time assists, with 249 for a 2.28 pace.

Nick Sweeney, in a center-forward role, also has concluded his Bruin career, averaging 6.8 points a game for the season and 4.2 rebounds.

The Bruins averaged 82.7 points a game, opponents 75.2. George Fox outrebounded foes by a 1.9 margin, 43.9 to 42.0.



Bruin Basketball: (counter clockwise, beginning upper right) Paul Cozens paces team with 19.6 point average and 10.4 rebounds. Tim Hardie, second in both scoring (13.3) and rebounding (6); dressing room prayer following game; Tom Hewitt, a new assist record in one season with 138; Bruin fans proclaim #1 stance.

Campus Radio Station Rejuvenated

There's a new sound on campus. A student radio station has gone back on the line after a term's silence.

The 10-watt AM station, tentatively called KGFC, has been rejuvenated with a \$1,300 grant from the campus student government for the purchase of new equipment.

The station has its headquarters in the campus Student Union Building communication center and makes use of underground telephone lines connecting all campus residence halls.

Religion Faculty Adds New Prof

A new faculty member joined the George Fox faculty with the start of the new year.

Julia Hobbs becomes professor of Christian ministries and also will help in the college's continuing education program.

Mrs. Hobbs, who holds a doctorate in religious education, general education, and history from the University of Pittsburgh, has had teaching experience in both public schools and colleges.

She taught at Malone College in Canton, Ohio, for 10 years, ending in 1968, after seven years as a high school teacher in Sewickley, Pa., and a year at Winona Lake School of Theology in Indiana.

Listed in *Who's Who of American Women*, Mrs. Hobbs is a member of the American Society of Church Historians, the Evangelical Theological Society, and the Religious Education Association.

At George Fox Mrs. Hobbs is teaching courses, Organization and Administration of Christian Ministries, The Christian Family in the Church, and How to Teach Developmental Reading.

Mrs. Hobbs becomes the fifth member of the college's Religion Division faculty.

In each dormitory a small transmitter powers the radio signal into the building's electric lines so student radios receive programs via carrier current.

Valued at nearly \$3,000, the station was originally started last spring after a four-year planning effort, the work of many students, and a gift from a Pasco, Wash., radio station of two turntables and a mixer board.

Problems this fall, including securing additional equipment, kept the station quiet, but Newberg senior Dave Hampton plugged away at the situation to again put the station on the air.

City-GFC Share Curriculum Library

George Fox College opened class this fall with a new curriculum library, and there are some new Newberg users.

In a cooperative venture, the Newberg School District has consolidated its curriculum library for teachers with the GFC counterpart. The new larger library is located on the bottom floor of Shambaugh Library and is the result of a \$3,000 gift from Newberg resident Elizabeth Carey Minas.

A former seminar room in the library has been remodeled with new carpeting and book stacks and furniture to create the curriculum center. It contains textbooks, teaching guides, books and periodicals relating to teaching.

The former curriculum library, before the change, was located in a small room in Minthorn Hall. The relocation is part of a long-range goal of the college to continue to meet accreditation standards.

The coordination with the local school system is a benefit to both GFC students and Newberg teachers, according to GFC reference librarian, Audrey Burton, who is supervising the project.

For Newberg teachers it means a curriculum center they can utilize nights, weekends and in summer

Endorsed by the college administration, which allowed use of existing underground telephone cables in cooperation with General Telephone Co., the student station is broadcasting 30 hours a week, from 6 p.m. to midnight, Monday through Friday.

About a dozen students have signed up as volunteer "DJs" to host their own shows. Featured are recorded music, both secular and religious, local campus news, student comments, and taped nationally circulated programs.

The station programming and operation is governed by a student communication board.

months during hours when their former center was closed.

For students it means a greater selection of materials and for the college a reduction in the amount of publications it must purchase in duplication with those already in Newberg.

Mrs. Minas, whose gift instigated the library, is a volunteer librarian at the college after 25 years as a librarian in Honolulu. Her father, Gervas Carey, was president of the college from 1947-50.

Coach Plays in National Tourney

George Fox College women's field hockey coach Nadine Brood participated in the 36-team national U.S. Field Hockey Association tournament in Harrisonburg, Va., in November.

The Bruin coach was selected one of 22 members to represent the Pacific Northwest section of the association. She is a member of the Eugene Field Hockey Club, a center-defensive specialist.

The five-year George Fox coach was picked for the national tournament following two weekends of play between Oregon and Washington teams in the sectional process in Ellensburg, Wash.

Miss Brood, a member of George Fox's physical education department faculty, spent her Thanksgiving break in the three-day tourney, which is the selection process to choose a traveling U.S. women's hockey squad and an Olympic team entry.

Hockey Women Receive Honors

Two George Fox College players were among the 24 Willamette Valley Collegiate Field Hockey Association All-Stars selected following tournament action at Oregon State University.

Honorable mention nods were given to GFC's Judy Fox on defense and Sue Knaupp on offense. Miss Fox is a Columbus, Mont., senior and Miss Knaupp an Independence, Ore., sophomore. They were selected from among 120 participants in the two-day tourney, which involved ten teams. Competing and playing three games each were Oregon State and the University of Oregon (each with two teams), Lane Community, Oregon College of Education, Willamette, Southern Oregon State, Portland State and George Fox.

The Bruins had a good weekend, blanking Portland State, 2-0 and shutting out Lane Community by the same score. The hockey Bruins then dropped a contest to Oregon State, 4-0. OSU earlier in the tournament upset favored University of Oregon.

The hockey women finished the season with a conference record of 6-2.



Coach Nadine Brood