

10-1980

George Fox College Life, October 1980

George Fox University Archives

Follow this and additional works at: http://digitalcommons.georgefox.edu/gfc_life

Recommended Citation

George Fox University Archives, "George Fox College Life, October 1980" (1980). *George Fox College Life*. 71.
http://digitalcommons.georgefox.edu/gfc_life/71

This Book is brought to you for free and open access by the Archives at Digital Commons @ George Fox University. It has been accepted for inclusion in George Fox College Life by an authorized administrator of Digital Commons @ George Fox University. For more information, please contact arolfe@georgefox.edu.

George Fox College's Life

VOLUME X, NUMBER 5 • OCTOBER 1980 • PUBLISHED BIMONTHLY BY GEORGE FOX COLLEGE, NEWBERG, OREGON • BARRY HUBBELL, EDITOR • SECOND CLASS POSTAGE PAID AT NEWBERG, OREGON 97132

Dedicating Our Newest

"I congratulate you on your growth; it overwhelms me." With those words Newberg Mayor Elvern Hall helped officially dedicate George Fox College's newest building in ceremonies Oct. 13.

Gervas Carey Hall on that date became the seventh new building in four years to be added to campus facilities. The 6,400-square-foot, three-level building houses 32 students in 16 rooms in eight suites.

"We appreciate your growth and what it means to the city," Hall told the audience, which started the program outdoors in front of the building, but which, part way through the program, moved inside as rain began to fall.

Also participating in the ceremonies were Architect Donald Lindgren and George Fox Board Chairman Robert Monroe. Special guest was Elizabeth Carey Minas, daughter of Gervas Carey. He was George Fox president from 1947 to 1950.

Mrs. Minas, who is a daily volunteer in the college library, officially acknowledged the naming of the building after the large portrait of her father was unveiled. It will hang in the building's lower lounge.

She called attention to Carey's love of being with and serving students, and said he would have particularly liked the canyon setting chosen for the building bearing his name.

Monroe pointed out the college's recent emphasis on new buildings, because of rapid enrollment growth, and stressed their necessity, noting "they are the tools" by which education is furthered.

President David Le Shana, who presided over the ceremonies, led the audience in the Act of Dedication, which in part said, "We dedicate this building to the service of God, and commit to His loving care all who dwell therein."



Elizabeth Carey Minas and President David Le Shana.

The unison reading added, "We dedicate ourselves anew to that service of our fellowmen wherein can best be performed our true service to God . . ."

Carey Hall is the first "minidorm" on the campus. The building, of wood-frame construction with tile roof and brick finish similar to recent campus construction, is designed to be one of three in the same setting.

Chapel Campaign: Coming Closer

The fund to construct a new chapel/performing arts center at George Fox College has now risen to \$1.4 million, an increase of nearly \$1 million since a spring report.

The size of the fund to date and the prospects for a timetable on construction will be discussed by the college's board of trustees at its semiannual meeting on campus Dec. 5-6.

The fund drive took two large steps forward in October with the announcement of receipt of two major gifts, one for \$250,000 and the other for \$400,000.

The \$250,000 was given by an Oregon couple, who have requested to remain anonymous. They are parents of a student at the college. The gift, one tenth of the amount needed toward the total \$2.5 million anticipated cost, is an equity in a Medford area development project through the George Fox College Foundation.

"Through our association with the college we have realized the need there for

this building," said the donor. "We have been seeing great things there for the last several years and felt led to this support."

The \$400,000 grant came from the Collins Foundation of Portland, Ore. The gift, the largest single donation so far, included a \$200,000 check with pledges for \$100,000 July 1 and another \$100,000 the following July.

In addition, the college has received several other large gifts, including more than \$30,000 from a board member, a \$75,000 pledge from the George Fox College Foundation, and \$25,000 from the First National Bank of Oregon.

Total costs of the chapel building and the advisability of a start this academic year will now be discussed by the board.

Planned is a 1,200-seat auditorium in a 23,500-square-foot building that would become the dominant building on the campus.

Architect's plans call for a structure equivalent to a four-story building with

a main floor and balcony seating. The chapel/auditorium will be the second phase of a two-phase building, the Milo C. Ross Center. The first phase, a classroom/office structure, a separate \$1.5 million project housing music and religion departments, was opened in October 1978.

The new project will adjoin the present building on the west on what is now a parking area. The second phase project will have a full stage, dressing rooms, green room, orchestra pit, lobby and ticket booth.

It is being designed to serve the surrounding community as a major gathering place. It will replace Wood-Mar Auditorium, a third-floor facility in the college administration building completed in 1910. The present auditorium has seating for 420 and this year for the first time is not being used for required chapels because of enrollment growth. Students now meet in the college's sports center.

Education Endorsement

George Fox College's teacher education program has been given the maximum approval with praise of the Oregon Teacher Standards and Practices Commission.

The commission granted the maximum extension for approval, until August 1985, for 11 areas requested by the college.

Endorsed for continuation are programs for secondary teachers in health, language arts, speech, drama, math, advanced mathematics, music, physical education, biology, integrated science and social studies.

The visiting review committee said: "The Teacher Education Program at George Fox College has reacted positively to recent rapid growth, despite the fact that times of growth frequently are times of distress and displacement. New faculty

members and new physical facilities have increased educational opportunities for all students of the college. The newly formed Consortium for the Improvement of Teacher Education is but one example of judicious planning for change to benefit the program."

The committee also reported: "Certainly one of the great strengths of the program is the spirit of concern and caring for individuals expressed in many ways on this campus, which has Christian ideals as a central focus for all campus life. The relatively small size of the school enables the expression of this spirit of concern."

George Fox was reviewed by a six-member team in coordination with a visit by a review team of the Northwest Association of Schools and Colleges, which earlier also had granted continued accreditation.

Still Growing

George Fox College enrollment has climbed to 745, the highest in the college's 90-year history.

With the growth from 734 a year ago, the college now has had eight consecutive years of enrollment increases, which has jumped enrollment by nearly 75 percent from the 431 recorded in the fall of 1972.

In addition to the Newberg campus enrollment, 49 students are registered for independent off-campus mathe-

matics study courses for elementary school teachers, giving the college a total enrollment of 793.

The 745 students include 318 new students, 399 returning, and 28 in continuing education courses.

The number of new freshmen has increased by 3.6 percent to 227 from 219 a year ago. There are 311 students in the freshman class, 147 sophomores, 148 juniors, 97 seniors (including joint

degree students with Oregon College of Education), and 42 in unclassified, early admit, post-graduate and continuing education classifications.

The largest increase—4 percent—has been in the number of full-time students, up by 26 from 665 to 691. The college, which added a new residence hall and residence house to its housing this fall, now has 615 students living on campus, up from 590 a year ago, and about 83 percent of the enrollment.

Pursuit Of Excellence

Fall Convocation

"The Christian can adopt nothing less than the pursuit of excellence as his goal." With those words Ted W. Engstrom, executive director of World Vision of the United States, helped George Fox College formally start its 90th year.

Engstrom, perhaps one of the most well-known Christian executives in the English-speaking world, was the guest speaker for the annual Fall Convocation program held Oct. 13.

In his address, "The Pursuit of Excellence," Engstrom, a George Fox board member since 1969, stressed repeatedly the need to strive for excellence in everything.

"The striving for excellence is not an act, but a habit," he told the audience of about 800 gathered in the Coleman Wheeler Sports Center.

"Nothing less than the pursuit of excellence can possibly please God," Engstrom said. "It is in the pursuit of excellence that we find our satisfaction," he added. He said excellence is a process more than an achievement.

There are many Christians, Engstrom said, who "become uneasy with the idea of having the best, being the best, or doing that which is outstanding.

"In our thinking, too often we don't mind 'excellence' if we can shift responsibility for it onto someone else or onto the Lord . . . but we may become sus-

picious if someone is praised directly for doing an excellent job."

He added, "Striving for excellence in one's work, whatever it may be, is not only a Christian's duty, but also is a basic form of Christian witness. This could be called a foundation of non-verbal communication that supports the verbal."

"We are called to excellence,"

Engstrom said. "And, we are called to set standards of excellence for ourselves and all men."

"We as Christian leaders should be passionate champions of quality—an advocate of the first rate!" he told the audience.

Engstrom noted that by definition, excellence is a measure, it assumes a goal or objective, it assumes priorities, it is more of a process than an achievement, it has to do with a style of life, and it assumes accountability.

"There is a difference between striving for excellence and striving for perfection," Engstrom said. "The first is attainable, gratifying and healthy. The second often is unattainable, frustrating and neurotic."

"In the matter of motivation," Engstrom said, "excellence for its own sake is not our standard, but rather excellence for Christ's sake." He challenged that in seeking Christian excellence, we should keep this in per-

spective. "Some things are more excellent than others."

Engstrom this year was named executive officer of World Vision of the U.S. after 17 years as executive vice-president of World Vision International.

For 12 years he was president of Youth for Christ International and publisher of *Campus Life* magazine. For 12 years he was editorial director and general manager of Zondervan Publishing House, the largest independent religious publishing firm in the world.

The fall convocation program was the official welcome to George Fox for the 227-member freshman class and the more than 300 new students. The time also was used to honor scholarship and grant recipients and donors.



Ted Engstrom

New Board Members

Three new persons have been named and 12 others returned to the George Fox College Board of Trustees.

Appointments were made by Northwest Yearly Meeting of Friends Church, the college's governing body.

Serving for the first time will be Earl Tycksen, pastor of Meridian, Idaho, Friends Church, and a 1957 George Fox graduate; Margaret Lemmons, a Kelso, Wash., High School English teacher and a 1951 George Fox graduate; and Ken Smitherman, superintendent of Greenleaf (Idaho) Friends Academy.

With three-year terms, a third of the 42-member board is elected each year. George Fox alumni nominate 6 board members, current board members 18, and Northwest Yearly Meeting, which must confirm all appointments, 18.

All three of the new members were chosen by the Yearly Meeting at its annual conference on the college campus.

It also renamed Ivan Adams, retired First National Bank of Oregon executive; Harold Clark, associate pastor of Eugene Friends Church, Eugene; Phil Harmon, president Harmon and Associates, Seattle; Dean Campbell, executive director of Friendsview Manor.

Renamed by the board to serve further terms are Newberg physician Stanley Kern; Thelma Martin, Caldwell, Idaho, businesswoman; Ronald Gregory, a partner in Harmon and Associates, Seattle; Floyd Watson, First National Bank of Oregon, Eugene; and James Miller, investments, Portland.

Earlier the board nominated Dick Evans, Internal Revenue Service, Portland, as its new member.

Returning as alumni representatives are Richard Beebe, principal of the Crow-Applegate-Lorane Elementary Schools, Eugene; and Norman Winters, superintendent of the Melba, Idaho, school district.

European Experience



Forty George Fox College students, faculty and staff members, alumni and friends participated in the annual fall Miniterm—a three-week study tour of six countries in Europe (England, The Netherlands, Germany, Austria, Switzerland and Italy) in September.

The travel adventure, which earned some students up to eight hours of credit, was the most extensive yet taken under the annual learning program. A trip to China is being planned for next fall.

This year the students listened to lectures on history and literature while aboard the bus "home" that took them through the countryside. Tour leaders were GFC professors Julie Hobbs, director of Lifelong Learning, and Lee Nash, professor of European history.

The travelers gathered for sightseeing and pictures in front of Britain's Parliament Building, Big Ben and the Thames River; observed windmills in the Netherlands; shopped for fresh fruit in the open stalls in Venice and attended the world-famous Oberammergau Passion Play in the Bavarian Alps. The play, which depicts the last week of Christ's life, is performed only every 10 years since village residents began in 1634.

With a week in Italy, the tour members' visit included Pisa to see the Leaning Tower, and Rome, for a tour of the Coliseum.



Dan Nolta: Alumni President

An Olympia, Wash., pastor will head the George Fox College Alumni Association during the current school year.

Dan Nolta (photo right), pastor of the Olympic View Friends Church, has been elected president of the college's Alumni Board of Directors. Nolta, a 1963 graduate and a second-year board member, replaces Ray Warner in guiding the 4,000-member association.

Warner, president for three years, moves to the position of vice-president. A 1950 graduate, he is a roofing contractor in Forest Grove.

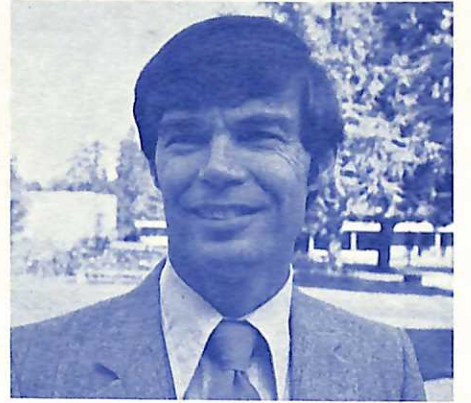
The new secretary is Cindy Friesen, a 1979 graduate, who currently is a

member of the George Fox admissions staff.

Named Alumni Fund cochairmen are Gary Blackmar, a Tualatin, Ore., insurance representative and a 1968 graduate, and Curt Drahn, a Bend, Ore., real estate broker and a 1966 graduate.

Heading the Alumni College Committee will be Louise Sargent, a 1975 graduate, and Florene Nordyke, a 1955 graduate.

Mrs. Friesen and Jan Cammack, representative for the Class of 1980, will head the 1981 Homecoming Committee. Miss Cammack also will head the Young Alumni Committee.



Alumni News & Notes

Loyd Schaad (n37) and his wife have retired in Portland after 32 years of missionary service in Africa, the last 9 in Botswana. He was honored by having his name placed on a plaque commemorating the cooperative efforts of church organizations and the Botswana government. The plaque read "Agriculture Laboratory, opened by Bishop Ralph E. Dodge, United Methodist Church, 24 May, 1980. In Recognition of the Contributions of Loyd Schaad to Agriculture in Ngamiland."

J. Earl Gell (n43) now has a weekly Sunday afternoon broadcast over KPDQ in Portland at 3:00 p.m. titled "Biblical Truths." He is pastor of the First Friends Church, Vancouver, Wash.

Norval Hadley (G49) has recently published a booklet, "Sin After Sanctification." He developed it from a manuscript prepared while a seminary student at Western Evangelical Seminary for his final thesis. He currently is pastor of the Bell (Calif.) Friends Church, and working with World Vision International as Director of Church Relations.

Ralph Beebe (G54) has recently written and published a 62-page paperback commentary, "Waging Peace—A Study in Biblical Pacifism," coauthored with John Lamoreau, Newberg, and published by The Barclay Press, Newberg.

Harold Clark (G65) is associate pastor at the Friends Church in Eugene, Ore.

Janet Gathright (G66) is completing studies at Fuller Seminary and will receive a master of divinity degree in December. She is serving as pastor of the Friends Church, Berkeley, Calif.

Jesse Kennison (G66) has been named junior and senior high principal at Greenleaf (Idaho) Friends Academy. He previously taught two years at the academy (1967-69), then was principal at Payette (Idaho) High, and for the last four years has been at Neah-Kah-Nie High School on the Oregon coast.

Jerry Sandoz (G66) and his wife Barbara returned to Seoul, Korea, July 2 after a 13-month furlough. He is field treasurer and business manager for OMS International.

Shirley Mewhinney (G67) is with Korea Campus Crusade for Christ, Seoul, Korea, and this fall has traveled three weeks to China, where she visited Peking, Shanghai, Nanking and Canton.

Lowell Graves (G68) is pastor of the Fellowship Baptist Church in north Portland.

Mauri Macy (G68) was recently selected to fill a quarter-time position at Newberg Friends Church as minister of music. He also is teaching private music lessons.

Marian Larson (G69) on March 31 became the parent, by adoption, of Brenda Gayle, age 10, and Robert Dale, age 12.

Randy Morse (G71) is serving as missionary with the Friends Church Mission in Peru, South America. He was recorded as a Friends minister, July 31 in Newberg.

David Wildermuth (G72) is pastoring the Edgewood Evangelical Church in Eugene, Ore., after being ordained July 24 at Jennings Lodge, Ore.

John and Martha (Davenport) Beck (BG73) have received degrees from Fuller Theological Seminary in Pasadena, Calif. He received a master of divinity degree and she a master of arts in marriage and family counseling.

Carl Duhrkoop (G73), formerly of Vernonia, now is assigned to pastor the Pedee Evangelical Church in Monmouth, Ore.

Shirley (Brown) Kluver (G73), is working with her husband in his roofing business, in Salem.

Carl Hanson (G75) graduated from Western States Chiropractic College in Portland, Ore., Sept. 19, and plans to practice in Albany at the start of the new year.

Gary Houser (G75) in August received a master of arts degree in political science from Washington State University, Pullman, Wash.

Vernon and Lorl (Bowersox) Ellicott (BG76) have both received degrees from Fuller Theological Seminary. He received a master of divinity degree and she received a master of arts degree in marriage and family counseling. He currently is pastor of the Glenfair Evangelical Church, Portland, Ore.

Steven Fellows (G76) is attending Washington University School of Medicine, St. Louis, Mo., in a master's degree program in Health Care Administration.

Roger Sargent (G76) is pastoring the Rose Valley Friends Church, Kelso, Wash., and was recorded as a Friends minister July 31 in Newberg.

Walt (n77) and **Yvonne (Cadd)** (n79) Everly are missionaries in the Philippines. He is working in photography for the mission and in areas of music. She is a nurse, working with the Action International Ministries medical team, which ministers to the people of Manila.

Steven Hopper (G77) is pastoring the Evangelical Church in Vernonia, Ore., after being ordained July 24 at Jennings Lodge.

Mark Kelly (G77) is pastoring the Friends Church in Talent, Ore., and was recorded as a Friends minister July 31 in Newberg.

Tom Larson (n77) is director of purchasing for Covenant College, a Christian liberal arts college in Lookout Mountain, Georgia.

David LeRud (G77) is assistant pastor of Wichita Evangelical Church, Milwaukie, Ore., after being ordained July 24 in Jennings Lodge.

Elaine (Rhodes) Poole (G77) has completed a master of arts degree in science at Lewis & Clark College, Portland. She is teaching at Detroit (Ore.) High School, and is athletic director.

Dave and Carol (Puckett) Schmidt (BG77) are living in Elkhart, Ind., where he is attending Associated Mennonite Biblical Seminaries. He also represented Northwest Yearly Meeting at the New Call to Peacemaking conference in Greenlake, Wisconsin. She is teaching bilingual first grade, in South Bend, Ind.

Jack Selfert (G77) in June received a master of divinity degree from Fuller Theological Seminary, Pasadena, Calif.

Phil Smith (G77) received a master of arts in religion degree in June from Fuller Theological Seminary and now is pastor of the Friends Church in Pasadena, Calif.

Roy Gathercoal (G78) is director of services for Northwest Schools, Portland.

Andrew Grove (G78) received a master of arts degree in history from the University of Portland, Aug. 8.

Cheryl Horgan (G78) is in her third year of teaching missionary children at New Tribes Mission school, 150 miles from Santa Cruz, Bolivia. She teaches music to all levels and also speech and drama to high school age.

Cheryle Lawrence (G78) is at Willamette University, teaching Health, Sports Medicine, and coaching softball.

David A. Schmidt (G78) and his wife have moved to Lynnwood, Wash., where they are pastoring the Evergreen Christian Center, in north Seattle, Wash.

Roselyn Wabuge (G78) graduated from Portland State University with a master of science degree in special education.

Steven Fine (G79) and his wife are now associate pastors at the Sherwood (Ore.) Friends Church. He is also attending Western Evangelical Seminary, Portland.

Paul Bishop (G79) is with Goecks Management Systems, based in McMinnville, Ore.

Margaret Neff (G79) is secretary in the financial aid office at Linfield College, McMinnville, Ore. She also is choir director at West Portland United Methodist Church.

Larry Smith (G79) is a social service coordinator for Mid-Columbia Head Start, Hood River, Ore.

Brian Morse (n81) in June received an associate degree in machining processes technology from

Oregon Institute of Technology, Klamath Falls, Ore.

Karin Schneider (n82) is attending Good Samaritan School of Nursing, Portland, Ore.

MARRIAGES

Peggy Wilson (G76) to Daniel Scully, Aug. 2, in Newberg.

Lois McIntyre (G78) to Ross Epperson, July 19, in Klamath Falls, Ore.

Karen Bush to **Chris Stelger** (G78), Aug. 30, in San Diego, Calif.

Debra Bretmeier (G79) to Michael Skiles, Oct. 4, in Portland, Ore.

Sandra Hauser (n80) to Brian Hall, Aug. 9, in Portland, Ore.

Carol Hutchinson to **Randal Snow** (BG80), Sept. 27, in Newberg.

Jane Pumputls (n81) to **Marc Graff** (G80), Aug. 23, in Portland, Ore.

Debbie Roberts (n82) to Michael Royer (student), Aug. 16, in Boise, Idaho.

Joyce Neuman to **Greg G. Griffin** (G80), Aug. 9, in Seattle, Wash.

Gale Wilkinson to **Michael McCorkle** (n82), Sept. 20, in Salem, Ore.

BIRTHS

To **Don** and **Beverly (Hewett)** (n71) Dell, a boy, Timothy James, July 3, in Valencia, Calif.

To **Bob** and **Becky (Robb) Hicks** (BG71), a girl, Amber Kristine, July 9, in Kirkland, Wash.

To **John** and **Linda (Calkins) Holton** (BG72), a boy, Chad Johnathan, Mar. 4, in Caldwell, Idaho.

To **Gary** and **Sharon (Dunlap) Jackson** (BG72), a girl, Jessica Dove, June 3, in La Habra, Calif.

To **Merced** and **Shirley (Barnett) Flores** (BG73), a boy, Severiano Merced, July 19, in Salem, Ore.

To **Dan** and **Shirley (Brown)** (73), Kluver, a boy, Randy Allen, March 10, in Salem, Ore.

To **Gayle** (G74) and **Nancy (Jessup)** (n76) Buckley, a girl, Elsa Jane, September 18, in Seattle, Wash.

To **Dan** and **Bev (Rez)** (n74) Mayfield, a boy, Brian Keith, July 8, in Orange, Calif.

To **Brad** and **Sharon (Fodge)** (G74) Brown, a girl, Michelle Leanne, July 22, in Medicine Hat, Alberta, Canada.

To **Evan** (past faculty) and **Rachel (Whittlesey)** (G74) Rempel, a boy, Alan Jonathan, May 18, in Newberg.

To **Wayne** (G75) and **Beverly (Ankeny)** (n79) Chapman, a boy, Nicholas Wayne, Aug. 26, in Portland.

To **Gary** and **Irene (Jacques) Merritt** (Bn75), a boy, Seth David, Sept. 17, in Yakima, Wash.

To **Paul** (G76) and **Sharon (Libbey)** (n78) Esslinger, a girl, Melany Anne, Sept. 7, in Garland, Texas.

To **Roger** (G76) and **Louise (Minthorne)** (G75) Sargent, a girl, Bethany Rose, Oct. 12, in Kelso, Wash.

To **Dan** (G77) and **Crystal Hoffman**, a girl, Carissa Ann, March 4, in Billings, Montana.

To **Bruce** (G78) and **Denise (Roberts)** (n81) Cloud, a boy, Aaron Ray, Sept. 4, in Daly City, Calif.

To **Bob** (G79) and **Nancy (Minthorne)** (G77) Laughland, a girl, Hannah Marie, Aug. 2, in Beaverton, Ore.

To **Patrick** and **Rhonda (Krueger)** (n80) Landreth, a girl, Rebecca Lynne, April 5, in Sonora, Calif.

DEATHS

Ray Langworthy (G14) passed away Sept. 29, in Campbell, Calif.

Margaret Jackson (n30) passed away Aug. 10, in Moorestown, N.J.

Foundation Change

Maurice Chandler, director of development for George Fox College, has been named executive director of the George Fox College Foundation until June 30.

Chandler, who will hold both his college and foundation positions concurrently, replaces Ron Bowden, who resigned after being in the position since 1979.

Chandler has been at George Fox since 1966. He has helped guide the college to financial stability, including \$7 million in new facilities and balanced budgets.

Bowden, a 1974 George Fox graduate in business and economics, has become an associate with a management team for Ron Willcuts and Associates.

In his new position he is giving leadership to projects planned by Ron Willcuts, killed with three other Newberg men in an airplane crash in remote Eastern Oregon in June. Those projects and others had GFC Foundation ties with which Bowden is familiar.

A task force was formed last June to study future directors for the 11-year-old foundation. The committee is continuing that study as well as plans for continued leadership for the next fiscal year.

The foundation is separate from the college itself and has the purpose of ventures with capital and investments.

New Science Equipment

Chemicals and laboratory equipment valued at up to \$100,000 have been acquired by George Fox College in a major move updating the science department.

The new supplies were obtained through the liquidation of ICN Medical Laboratories in Portland. At one time the ICN complex was the largest medical lab in the world, handling

clinical laboratory work for hospitals and private physicians.

Although the new equipment and supplies have a replacement value of from \$70,000 to \$100,000, the college actually spent only \$14,000, according to Dale Orkney, chairman of the Division of Natural Science. Half of that came from contacted donors, the other directly through college funding.

Acquired in the block purchase were three gas chromatographs, and an atomic absorption spectrophotometer, and a fluorescent microscope with camera attachment. They are valued at \$28,000 and the college purchased them for \$10,000.

The college's science department also acquired thousands of dollars in chemicals and glassware, both new and used.



A Classic Name

George Fox College's annual Christmas season basketball tournament will be renamed the Ron Willcuts-Dale Twenge Memorial Classic in honor of two Newberg men who died in an airplane crash in Eastern Oregon in June.

Both men were George Fox alumni, active in the college basketball program as players and supporters.

Announcement of the renaming of the former "Bruin Classic" was made by George Fox President David LeShana. This year's tournament, the third, will be Dec. 18-19. It annually involves four high school and four college teams in separate brackets.

Families of both men, at the time of their deaths, requested establishment of athletic funds in their names at the college to receive memorial gifts. More than three thousand dollars has been received. It will be used to establish a permanent endowment to partially support the annual tournament.

Willcuts, 41 at his death, was a member of the George Fox Board of Trustees. Twenge, 36 at his death, was a member of the college's Alumni Board and chairman of the Alumni Fund. They died with two others in the crash of a small plane June 26 in a severe thunderstorm near Baker, Ore.

Willcuts and Twenge were brothers-in-law. Willcuts, a 1961 graduate, joined Page-Willcuts Construction Co., later known as Ron Willcuts Homes, Inc. He had just finished construction of the \$2.5 million Sunny Ridge Manor retirement center in Nampa, Idaho.

Willcuts and his firm in 1968 built George Fox Hobson Residence Hall and constructed the addition to the Student Union Building that same year.

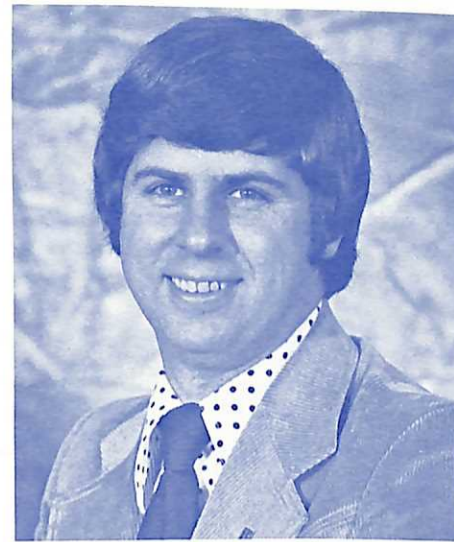


Ron Willcuts

At the time of his death Willcuts was involved in the development of 35 residential subdivisions and a variety of apartment complexes and shopping centers in Medford, Boise and Newberg. Several were related financially to the George Fox College Foundation.

Willcuts was vice-chairman of the George Fox College Foundation and a member of the college's development committee. He was a member of the Friendsview Manor Board of Directors. He was an avid Bruin basketball booster.

Twenge, a member of the class of 1966, taught science and coached basketball in Lebanon and Prineville, Ore., until 1977, when he moved to Newberg to join his father-in-law at Newberg Realty, becoming a licensed broker.



Dale Twenge

He was vice-president-elect of the Newberg Kiwanis Club and chairman of the Newberg Free Methodist Church finance committee.

Services for those killed in the crash were held in the college's Coleman Wheeler Sports Center, where the tournament is held.

"This seems to be the appropriate way of honoring both Dale and Ron," said LeShana. "They were both actively involved with George Fox and in George Fox athletics, especially the basketball program; we are glad their families have approved this decision to rename the tournament in their honor."

Family members will be asked to participate in the tournament as special guests and to hand out championship trophies.

Bruin Basketball

George Fox College will meet 12 regular season teams, all but one NAIA District 2 colleges, in a 27-game basketball slate starting Dec. 4.

The Newberg Bruins will have 16 games at home in Wheeler Sports Center, and 11 on the road.

Also, the Bruins will continue their annual Christmas Week tournament for the third year, but this year with a new name—the Ron Willcuts-Dale Twenge Memorial Classic, honoring two Newberg and college leaders killed this summer in an airplane crash (see separate story). Four colleges and high school squads will compete in the two-day, Dec. 18-19, affair.

The Bruins open their season hosting the NAIA District 2 Tip-Off, including the championship game Dec. 6. The tourney begins Dec. 4 with George Fox meeting Pacific and Warner Pacific meeting Eastern Oregon. Four teams in a two-day tourney at Willamette University move to George Fox for the championship finals.

After the Tip-Off the Bruins open their regular season Dec. 12 in Forest Grove with Pacific University.

Athletic director and Basketball Coach Sam Willard announced the schedule, which takes the Bruins to eight cities in Oregon and Idaho.

The Bruins have 10 home-and-home matches, face College of Idaho in a single game in Caldwell, and have a single game with Seattle Pacific, an NCAA squad and the only non-NAIA team.

In the Willcuts-Twenge tournament are Point Loma (Calif.), Concordia, College of Idaho, and GFC on the college division, and Newberg, Canby, Madison and Sunset on the high school level.

During the season the Bruins face four Northwest Conference teams—Willamette, Lewis & Clark, Linfield and Pacific. They'll meet two former Evergreen Conference foes—Oregon College of Education and Eastern Oregon. The Bruins will challenge five other independent teams—Northwest Nazarene, Western Baptist, Warner Pacific, Concordia and College of Idaho.

All regular season home games will start at 7:30 p.m. in Miller Gymnasium of Wheeler Sports Center, being used for the fourth year.

Willard, starting his fifth season with the Bruins, has recruited some top in- and out-of-state talent to go with four returning starters as the Bruins build on an 18-12 season last year.

- | | | |
|----------|--|--------------|
| Dec. 4-6 | NAIA District 2 Tip-Off Tourney (vs. Pacific University) | Newberg |
| 12 | Pacific University | Forest Grove |
| 13 | Seattle Pacific University | Newberg |
| 16 | Linfield College | McMinnville |
| 18-19 | Willcuts-Twenge Classic | Newberg |
| | (Concordia, College of Idaho, and Point Loma Colleges; Newberg, Canby, Madison, and Sunset High Schools) | |
| Jan. 2 | Oregon College of Education | Monmouth |
| 3 | Lewis & Clark College | Portland |
| 6 | Linfield College | Newberg |
| 9 | Willamette University | Newberg |
| 10 | Oregon College of Education | Newberg |
| 13 | Western Baptist College | Salem |
| 16 | Warner Pacific College | Portland |
| 17 | Pacific University | Newberg |
| 23 | Concordia College | Portland |
| 24 | Willamette University | Salem |
| 30 | Lewis & Clark College | Newberg |
| Feb. 3 | Concordia College | Newberg |
| 6 | Eastern Oregon State College | Newberg |
| 7 | Northwest Nazarene College | Newberg |
| 13 | Northwest Nazarene College | Nampa |
| 14 | College of Idaho | Caldwell |
| 16 | Eastern Oregon State College | La Grande |
| 20 | Western Baptist College | Newberg |
| 21 | Warner Pacific College (Homecoming) | Newberg |
| 27-28 | NAIA District 2 Play-Off | TBA |

WOMEN'S BASKETBALL

George Fox College basketball women open their competition Dec. 2 with the first of 27 games, but the real action doesn't begin until nearly a month later.

The Bruin women have fewer than half of the games that really "count" for the top prize—championship of the Women's Conference of Independent Colleges. George Fox is one of six schools in the league and the Bruins will face the other five schools twice in home-and-home contests.

After the opening matchup in hosting the University of Portland, the female Bruin squad participates in the Willamette Tip-Off for three games in Salem, then hosts Western Baptist Dec. 11. Then it's a 25-day layoff until the

next game Jan. 5. The first league contest is in Tacoma, Jan. 9, with Pacific Lutheran University. Competition concludes Feb. 28 in Newberg as Seattle Pacific University visits. Thirteen of the games this season are at home, starting at 7:00 p.m. on most nights, except 5:30 p.m. games when they precede the men's competition.

- | | | |
|----------|---|--------------|
| Dec. 2 | University of Portland 7:00 | Newberg |
| 4-6 | Willamette Tip-Off TBA | Salem |
| 11 | Western Baptist 7:00 | Newberg |
| Jan. 5 | University of Portland 7:00 | Portland |
| 9 | Pacific Lutheran U* 7:00 | Tacoma |
| 10 | University of Puget Sound 5:45 | Seattle |
| 14 | Lewis & Clark College* 7:00 | Newberg |
| 16 | Concordia College 7:00 | Newberg |
| 17 | Multnomah School of the Bible 6:00 | Portland |
| 20 | Pacific University* 7:00 | Forest Grove |
| 23 | Concordia College 5:30 | Portland |
| 24 | Willamette University* 5:30 | Salem |
| 27 | Willamette University* 5:30 | Newberg |
| 29 | Linfield College* 7:00 | Newberg |
| 31 | Pacific Lutheran U* 12:00 noon | Newberg |
| Feb. 3 | Judson Baptist College 5:30 | Newberg |
| 6 | Eastern Oregon State College 5:30 | Newberg |
| 7 | Western Baptist College 7:30 | Salem |
| 10 | Linfield College* 7:00 | McMinnville |
| 12 | Lewis & Clark College* 7:00 | Portland |
| 14 | St. Martin's College 7:00 | Newberg |
| 17 | Pacific University* 7:00 | Newberg |
| 20 | Oregon Institute of Technology 5:30 | Newberg |
| 24 | Oregon College of Education 7:30 | Monmouth |
| 28 | Seattle Pacific University 2:00 | Newberg |
| Mar. 5-7 | NCWSA Division III (NCC) *WCIC Conference | |



Nation's Best—Again

George Fox College's 1980 track media guide has been named best in the nation for small colleges.

The 20-page press book was selected in a contest conducted by the national College Sports Information Directors Association (CoSIDA).

The award is the sixth received by the college this year for its sports publications. Earlier the National Association of Intercollegiate Athletics (NAIA) named the George Fox basketball press guide the nation's best among more than 550 NAIA schools and ranked the college's basketball programs fifth nationally.

In earlier CoSIDA publication contests the George Fox basketball programs

were named second nationally, the basketball media guide was judged third, and the Bruin pocket schedules for basketball were ranked fourth in the special publication category.

The track media guide, in a 4 x 9 inch format, includes individual and team information, school and district records, season outlook, and information about the college, its athletic program, mascot, coaches and athletic facilities.

Selection for the awards is based on content, design and usefulness.

The publications were designed and compiled by Sports Information Director Barry Hubbell. They were printed by The Barclay Press, Newberg.

It's True!

... you can have a guaranteed income for life, while supporting Christian higher education through a George Fox College Annuity program.

For helpful information, without obligation, on this and other gift programs with excellent tax advantages, call: Maurice Chandler at (503) 538-8383 or write: George Fox College, Newberg, OR 97132