

10-1991

## George Fox College Life, October 1991

George Fox University Archives

Follow this and additional works at: [http://digitalcommons.georgefox.edu/gfc\\_life](http://digitalcommons.georgefox.edu/gfc_life)

---

### Recommended Citation

George Fox University Archives, "George Fox College Life, October 1991" (1991). *George Fox College Life*. Book 84.  
[http://digitalcommons.georgefox.edu/gfc\\_life/84](http://digitalcommons.georgefox.edu/gfc_life/84)

This Book is brought to you for free and open access by the Archives at Digital Commons @ George Fox University. It has been accepted for inclusion in George Fox College Life by an authorized administrator of Digital Commons @ George Fox University. For more information, please contact [arolfe@georgefox.edu](mailto:arolfe@georgefox.edu).

# LIFE

## George Fox College

VOL. XXI, NO. 4

OCTOBER 1991

PUBLISHED FIVE TIMES A YEAR  
BY GEORGE FOX COLLEGE  
BARRY HUBBELL, EDITOR

SECOND CLASS POSTAGE PAID AT NEWBERG, OREGON  
USPS 859-820 • POSTMASTER SEND ADDRESS  
CHANGES TO GEORGE FOX COLLEGE, NEWBERG, OREGON 97132

## What a Party!

George Fox College turned 100 years old during a three-day celebration that drew accolades from those who participated in the Centennial events.

The weekend's success went beyond the wildest dreams of members of the Centennial Committee, who were hoping for a crowd of 2,000 people for the Sunday afternoon Centennial Fair. Instead, they were stunned to learn that more than 3,500 had been served the free picnic lunch that opened the fair's activities.

The Sept. 7-9 celebration featured something for everyone, from a Saturday evening birthday party for Newberg-area alumni and friends to the lectures by nationally known visiting scholars on Monday to the

fireworks that lit up the sky over the campus at the conclusion of the Centennial celebration.

President Edward F. Stevens compared Saturday's event to a party for the immediate family and Sunday's community fair to opening up the party to the extended family. "I thought the Centennial Fair was terrific for cementing our relationship with the city of Newberg and this general surrounding area," he said. "I saw a lot of people there I'd never seen on campus before."

Leonard Attrell of Newberg echoed President Stevens' view. "I just thought it was really a wonderful event for not only the College but also for the community," he said. "Everybody was in a happy, festive

mood, and there was a lot of visiting going on."

Bill Field of Sunnyside, Wash., a 1952 GFC graduate and Board of Trustees member, was among those alumni who made the trip back for their alma mater's birthday.

"It was exciting to see the great number of people that were there. Everybody seemed to be enjoying themselves," he said. "They seemed to have something that appealed to everybody. I got pictures of my grandkids around the antique cars, and my wife spent a lot of time around the quilts."

"I thought it was outstanding," Marie Macy of Metolius, Ore., said. "In all of  
(See "Celebration" on page 4.)



A juggling act by Mike McConaughey, a junior from Boise, Idaho, entertains people waiting in line for cotton candy at the Centennial Fair.

## Graduate Program to Expand with Education Degree

George Fox College, which took its first step into graduate-level programs a year ago, is expanding its graduate studies into the field of education.

Beginning in June 1992, GFC will offer a Master of Arts in Teaching degree. The non-thesis, 11-month program is for individuals who have completed an undergraduate degree in a field other than education.

George Fox College President Edward F. Stevens announced the new program, which is expected to enroll about 30 to 60 students the first year.

The College's first graduate program, offering a doctorate in clinical psychology, started with 73 students and has 85 enrolled this fall, helping push total college enroll-

ment to a record 1,222 students in GFC's 101st year.

Graduates of the new program will be eligible for Oregon Basic Teaching Certificate approval and will have satisfied all academic conditions for the Standard Teaching Certificate. The M.A.T. degree will be available in advanced mathematics, biology, chemistry, elementary education, health education, home economics, language arts, music, physical education, and social studies.

Initial classes will be held on the Newberg campus and offered on the cohort plan, with groups progressing through the program as a class unit.

The graduate program was approved by the George Fox Board of Trustees in Febru-

ary after an on-campus preparation process that began in 1986, Stevens said. The program was approved by the Northwest Association of Schools and Colleges accrediting agency in June, and final approval is pending by the Oregon Teacher Standards and Practices Commission (TSPC).

George Fox will be one of five private colleges in Oregon to offer the fifth-year program. The College will place students in schools in Newberg, Sherwood, Dayton, St. Paul, and West Linn for field experience.

GFC will spend about \$60,000 in the next three years to expand library holdings in the education field, Stevens said. Existing  
(See "Graduate Program" on page 8.)

## Enrollment Sets Another Record

After a record-setting year in 1990, enrollment at George Fox College has grown another 14 percent to 1,222 students for the fall of 1991.

The increase marks the fifth consecutive year of enrollment growth for GFC, which has doubled in size in the last five years: from 549 students in 1986 to 706 in 1987, 820 in 1988, 945 in 1989, and 1,073 in 1990.

For the first time in its history, George Fox College has more than 1,000 students attending classes on its campus.

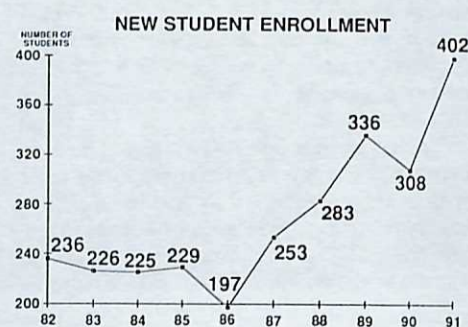
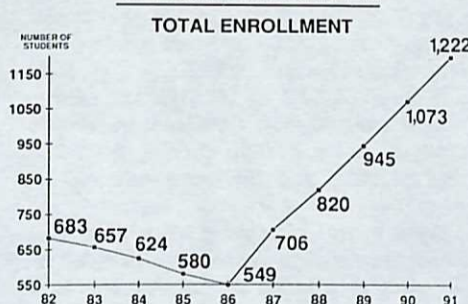
On-campus undergraduate enrollment is at 922 students this fall. The number of new students has increased by 34 percent over last year, with 264 first-time freshmen and 123 transfer students attending classes at George Fox College.

There are also 85 students in the College's graduate school of clinical psychology, a 16 percent increase over 1990. When transferred from Western Conservative Baptist Seminary last fall, the program had 73 students.

Another 215 students are enrolled in GFC's degree-completion program in management of human resources. Now in its fifth year, the program offers working adults classes in Portland, Salem, and Eugene.

"We continue to be grateful to God for the tremendous growth," President Edward F. Stevens said of the 1991 enrollment figures. "The quality as well as the quantity of students is increasing also. Growth presents some problems, but we welcome them as opportunities for the Kingdom of God."

### GEORGE FOX COLLEGE



## Fifteen Begin New Terms on GFC's Board of Trustees

An Arkansas resident joins members from Oregon, Washington, and Idaho who are starting new terms on George Fox College's Board of Trustees.

All were approved by Northwest Yearly Meeting of Friends Church at its annual session in July on the College's campus.

Newly named to the board are Peggy Fowler of Portland, Joe Gerick of Boise, Idaho, and P. Steven Harmon of Camano Island, Wash. Fowler, a 1973 graduate of George Fox College, is vice president of power production for Portland General Electric Company. A member of Newberg Friends Church, she also serves on the board of directors for the Portland YWCA.

Gerick is the new general superintendent of Northwest Yearly Meeting of Friends Church. Currently living in Boise, he assumes the position full time in January.

His background is in management and engineering, having worked as a department manager for CH2M Hill in Boise.

A graduate of the University of Idaho, where he earned both bachelor's and master's degrees, Gerick has been active in Northwest Yearly Meeting, chairing the Board of Evangelism and serving on the Board of Missions. At the Boise Friends Church, he has been a Sunday school teacher and elder and has filled in as preacher. He also has participated in a short-term missions project with the Get Away, Give Away program in Mexico.

Harmon, a 1982 George Fox College graduate, is president and manager of financial services for Harmon & Associates in Stanwood, Wash. Other leadership roles he holds include vice president and incoming president for 1992-93 of the Mount Vernon

Rotary; vice president and incoming president for 1992-93 of the Skagit Valley Hospital Foundation; chairman of the Stanwood High School Vocational Advisory Committee; and member of the board of trustees for Camp Harmony. He attends Camano Chapel, where he is chairman of the board, a deacon, and the worship music leader.

Fowler, Gerick, and Harmon join 12 others who have been renamed to the board: Hal Adrian and Robert Monroe of Portland; Gordon Crisman of Tualatin, Ore.; C. W. Field Jr. of Sunnyside, Wash.; Dorothy Roberts of Boise, Idaho; Donald Lamm of Greenleaf, Idaho; John Lemmons of Kelso, Wash.; Dwight Macy of Culver, Ore.; Jack Meadows of Fayetteville, Ark.; Roger Minthorne of Lake Oswego, Ore.; Bill Sims of Hayden Lake, Idaho; and William Wilson of Longview, Wash.

## PRESIDENT'S PEN

**BIGGER IS BETTER!** That is what many would call the American theme song.

**BIGGER IS BADDER!** (As in bad, badder, baddest??) This is what I am hearing from some folks who are concerned with the growth of the College.

Really, we should reject both notions as inaccurate generalizations that have nothing to do with George Fox College. I believe we have shown a degree of excellence that has allowed us to grow. It also seems to me that our growth is good in most respects, but let's reason together about the causes and the cautions of increased enrollment.

Obviously, several of our program additions have contributed to the growth, and that is positive because it means two things: (1) that we have extended our mission/ministry/purpose to a greater number of persons, and (2) that we have added strength, breadth, and depth to our education.

A listing of the program additions in the last seven or eight years includes Juniors Abroad, an international studies major, the English Language Institute, and other "Internationalizing the Curriculum" programs; new majors in elementary education (with 122 students this fall), Management of Human Resources (MHR)—also called the degree-completion program for working adults (with 216 enrolled), engineering (a 3-2 cooperative program with other colleges), and computer information science; graduate programs in clinical psychology (with 85 students), teacher education, management, and Christian studies—the latter three to begin in 1992.

The fall of 1991 has brought the exciting "Computers Across the Curriculum" program to campus. This follows the "Writing," "Ethics," and "Internationalizing" the curriculum emphases.

Some of the other good features to come from the growth certainly include the increases in salaries for faculty and staff. Enrollment growth has allowed the College to improve salaries by 7, 8, 9, 10, and 11 percent in the last five years. This is in comparison to tuition increases of 5, 5.2, 7, 7.8, and 8.3 percent in the same five years (1987-91).

The salary increases were needed just to bring our employees to a comparable level with other colleges and to give them a "living wage." Our people serve because they are "called," but we should still invest in

them when finances allow because our employees are our most valuable resource.

Certainly there are cautions to growth. One concern expressed to me often is the potential "loss of mission/purpose." Do not fear!! We know who we are and "Whose" we are at George Fox College. There is no intention of being anything but unashamedly Christ-centered. We also will continue to educate every student broadly—to live and to lead—not just to make a living. It is called a liberal arts education.

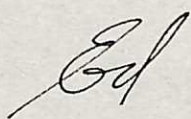
Often people will cite the names of schools that "lost the Faith," and it is implied that this happened because they became larger. I will respond with the names of Messiah, Wheaton, and other colleges that have grown but "kept the Faith."

Another concern is that with growth we will lose our marvelous sense of "community." This, I believe, is a possibility if we do not work at maintaining community. It is possible to grow and still keep the small school/friendly atmosphere.

We are committed to a 16:1 student/faculty ratio. The Student Life staff works hard at small group Bible study and community building in the residence halls. In 1988 the administration decided to limit the number of MHR classes because we believe we can give personal service and attention to about 200 students in that program. Chapel is filling the balcony of Bauman Auditorium, but it is possible to go back to three meetings per week (as in the past when Wood-Mar Auditorium filled up) if necessary. There is no doubt, however, that we will need to work to maintain the sense of community.

How large do we want to be? The Board of Trustees adopted a goal (not a limit) of 1,200 to 1,250 undergraduate (on-campus) students in the 1983 Century One Planning Commission (COPCO) report. If we continue to attract about 400 freshmen and transfers per year and our retention continues to improve, we should reach that number by 1994 or 1995. With graduate students and MHR, we would be at about 1,700 total students.

But only the Heavenly Father knows for sure, so we will just keep on doing our best so that . . . His kingdom come, His will be done, on earth as it is in Heaven . . . at least as it relates to the Kingdom work here at George Fox College.




GFC President Edward F. Stevens



Participating in a tribute to Richard Beebe during the dedication of Beebe Hall are his wife, Norma; President Edward Stevens; his children, Gayle, Londa, and Terry; and his pastor, Harold "Scotty" Clark (from left).

## Beebe Hall Dedicated

George Fox College's newest building, the Richard H. Beebe Residence Hall, was dedicated on Saturday, Sept. 28, one day less than a year from groundbreaking.

Members of the Beebe family joined with the GFC Board of Trustees and college administrators in the brief program.

The three-story building is located on the west side of the Hess Creek Canyon greenway, near Carlton Way. It houses 40 students in 10 two-room suites. The 9,000-square-foot minidorm building also contains a student post office to serve east campus residence halls.

The new building completes a plan for three similar new-format residence units. Carey Hall was completed in 1980 and Willcuts Hall last year.

Construction cost was about \$700,000, with the College serving as its own contractor and using specialized subcontractors.

Beebe was superintendent of the Crow-Applegate-Lorane School District near Eugene, Ore., when he died of cardiac arrest in September 1989 at the age of 60. He was named superintendent of the district in 1980 after serving for 20 years as its principal.

At the time of his death, Beebe was chairman of the Student Life Committee of the College's Board of Trustees. A 1951 GFC graduate and the College's Alumnus of the Year in 1985, he had been a board member for 15 years.

Beebe was one of the founders of the Eugene Friends Church. He served Northwest Yearly Meeting of Friends for 16 years as its presiding clerk, the denomination's highest lay leader position.

Naming of the building in his honor was approved by the College's Board of Trustees, which broke into its fall meeting for the dedication program.

Beebe's wife, Norma, and four children and their families were present for the program, which was followed by an open house.

The new building helps the College keep up with a growing enrollment that has doubled in the last five years. Beebe Hall and the acquisition this summer of two nearby residences gives the College housing for 703 students. Beebe Hall is the 17th residence unit on the college campus.

## Homer Wright Named Volunteer of the Year

On many sidewalks, steps, and projects on the George Fox College campus are the initials "VOW," for "Volunteers on Wheels." There well could be another set of initials: "HW."

Those initials stand for Homer Wright, 76, George Fox College's 1991 Volunteer of the Year.

Volunteers on Wheels is a group of retired members of Northwest Yearly Meeting of Friends Church who spend their summers traveling throughout Oregon, Washington, and Idaho, doing volunteer construction work for the church and its various ministries.

Every year since 1985, Volunteers on Wheels has spent two to three weeks on the George Fox College campus, helping in a variety of construction projects. Each year, Wright has been the project director, helping not only during the weeks the VOW members are on campus, but also weeks ahead in the planning and preparation.

In all, under Wright's direction the VOW workers have contributed about \$30,000 in services, based on prices at the time of project completion.

The projects have included sidewalks on Meridian and Sheridan streets; steps on the east and west sides of Hess Creek Canyon

near student residence housing; steps at the Wheeler Sports Center parking lot; slabs and foundations for the baseball dugouts and batting cages of the Morse Athletic Fields; and just recently, the concrete work, both internal and external, for the new President's/Development Offices.

In addition to these projects, Wright also has been available for consultation. During the school year, GFC's Director of Plant Services Clyde Thomas often calls Wright seeking advice. "The next thing you know, he's down here setting up the forms," Thomas said.



Homer Wright (photo by Tom Ballard of the News Register)

# Investors in George Fox College

Donors during our 100th year—July 1, 1990, through June 30, 1991



"Wish you were here!"

Remember when a friend or relative sent you a postcard (usually from an exotic place like Hawaii, Paris, or New Zealand) with that message? Well, it accurately reflects my sentiments for every one of our supporters and friends during the Centennial Celebration on Sept. 7, 8, and 9.

Sept. 7, after celebrating with area birthday parties throughout the West during our centennial year, we concluded back home on campus. An evening program featured performances by alumni joining with the band and choir, and by our touring vocal group, Dayspring. Cake and punch were served to our Newberg-area alumni and friends.

Sept. 8 found some of us at worship at Newberg Friends Church, where Pacific Friends Academy was started in 1885. I spoke in three meetings for worship—that is a challenge for a nonpreacher president (not to mention the challenge for those in worship). Then we moved to campus for an afternoon Centennial Community Fair. We were surprised and overjoyed when more than 3,500 joined us for a picnic, old-fashioned games and exhibits, cutting of the official birthday cake, and a Four Flats Quartet reunion concert, all on the campus quadrangle, which had been decorated with bunting, banners, and balloons.

Sept. 9 (the actual birthday of our founding), we hosted four nationally recognized scholars for a series of lectures as classes were dismissed for the day. A fifth scholar spoke in our morning Centennial Convocation. The three-day celebration ended Monday night with a Centennial/President's Council Dinner, followed by a candlelight ceremony around the Centennial Tower. As we placed a plaque on the time capsule, fireworks exploded overhead, bringing the yearlong Centennial observance to a close.

After the candlelight service, when Linda and I were driving home, I asked, "Well, on a 1-to-10 scale, how was the celebration?" Linda responded, "It was a 12!"

So yes, we "wish you were here!"

Also, it would have been great to have you here for the arrival of 402 new students, who moved our total number to 1,222. Both are records.

And it would be delightful to have you in Chapel with our new campus pastor, Gregg Lamm, experiencing the spirit of worship and the sense of celebration of God's love and joy.

I "wish you were here" to see nearly 700 students pick up their own Apple Macintosh computers as we began the Computers Across the Curriculum program.

In all, it has been, is, and will be an exciting year. It is possible because "... God is supplying all our needs, according to His riches in Christ Jesus..." and He is doing it through you!

THANKS—for your gifts—for your prayers—for encouraging young people to attend—for your time and efforts on our behalf!

THANKS!

Edward F. Stevens  
President



## TRUSTEES

Nontrustee spouses are indicated in parentheses

Alan & Sheryl Kirkendall  
Ethan & Nancy Laughland  
Jake & Maurine Lautenbach  
Myra Ledeman  
Michael Lehman  
Gerald & Margaret Lemmons  
John & Joan Lemmons  
Gordon & Jan Loewen  
William & Catherine Loewen  
Wayne & Maria Ludolph-Heikkala  
Hermna Lundquist  
Dwight & Marie Macy  
Gary & Jean Macy  
John & Karen Macy  
Seth & Cora Marks  
Roger & Claudia Mariell  
Ernest Martin  
Heima McClintock  
John & Melba McGrath  
Douglas & Dianna McIntyre  
Genette McNichols  
Don & Virginia Millage  
James & Lita Miller  
Elizabeth Minas  
Philip & Esther Harmon  
Roger & Mildred Minthorne  
Bruce Moberly  
Ronald Mock  
Robert & Marceena Monroe  
Glenn & Judi Moran  
Robert & Marlys Morland  
Stan & Ellen Morse  
Lee & Gracie Nash  
Nelson & Mary Gas Company  
William D. Nelson  
Jackson & Kay Newell  
Carmel Nissila  
Homer Nordyke  
Ken & Dana Ochsner  
Loyde & Della Osburn  
Howard & Muriel Ostrin  
C. W. & Mary Perry  
Bill & Jan Rasmussen  
C. Todd & Angela Retimann  
Jeffrey & Debbie Rickey  
Dale & Nancy Rinard  
Craig & Crisanne Roberts  
Deane & Arolys Roberts  
Dorothy Roberts

Margaret (& Gerald) Lemmons  
Maria (& Wayne) Ludolph-Heikkala  
Highly (& Marie) Macy  
Dorothy & Claudia Martell  
Thelma Martin  
Jack (& Jane) Meadows  
James (& Lita) Miller  
Roger (& Mildred) Minthorne  
Robert (& Marceena) Monroe  
Stan (& Ellen) Morse  
Charles (& Nancy) Mylander  
Jackson (& Kay) Newell  
C. W. (& Mary) Perry  
Victor (& Sheryl) Peterson  
Arolys (& Deane) Roberts  
Dorothy Roberts  
Wayne (& Bertie) Roberts  
Bill (& Vicki) Sims  
Floyd (& Arline) Thornburg  
Nancy (& Steven) Whitte  
Bill (& Judie) Wilson  
Norman (& Margaret) Winters  
\*Honorary members

Ivan (& Lucille) Adams  
Hal (& Audrey) Adran  
Peter (& Joan) Anderson  
Gloria (& Leonard) Altrel  
John & Berni Augustin  
John (& Cleta) Charles  
Harold (& Sharon) Clark  
T. Eugene (& Jean) Coffin  
Dealous (& Lois) Cox  
Gordon (& Cleta) Crisman  
Patricia (& James) DeLapp  
John (& Marilyn) Duke  
Richard (& Patricia) Evans  
Steven (& Denise) Fellows  
Bill (& Ruth) Field, Jr.  
Dale (& Shirley) Hadley  
Phillip (& Esther) Harmon  
Mark (& Linda) Heaton  
John & Lynn Hinton  
Donald (& Nancy) Lamm  
Jake (& Maurine) Lautenbach  
Walter (& Carol) Lee  
John (& Joan) Lemmons

## PRESIDENT'S COUNCIL

Ivan & Lucille Adams  
Don & Patricia Adran  
Harold & Leona Abischer  
Alexander Oil Company  
(George Alexander)  
Michael & Margaret Allen  
David & Chris Alteneader  
Amanda Anderson  
Peter & Joan Anderson  
Harlow & Gertrude Ankeny  
Harold & Betty Ankeny  
Philip & Susan Aronson  
Leonard & Gloria Attrell  
Ken & Joan Austin  
J. D. & Leona Baker  
Wendell & Donita Barnett  
Jerry & Tammy Barrick  
Dirk & Nancy Barram  
Dorothy Barrett  
Gordon & Katherine Baugh  
Kearl & Nicole Beas  
Ken & LeAnn Beebe  
Norma Beebe  
LeRoy & Paula Benham  
Paul & Carrie Bishop  
Mike Boehme  
Ron & Virginia Bowden  
Gary & June Brown  
Leland & Lucille Brown  
Eleanor Burton  
Janice Cammack  
Jerry & Yvonne Carr  
Paul & Sharon Chamberlain  
Maurice & Elouise Chandler  
John & Cleta Charles  
K. Gene & Michele Christian  
Harold & Sharon Clark  
Louis & Elizabeth Coffin  
T. Eugene & Gertrude Cole  
Frank & Genevieve Cole  
Randall Comfert  
Frieda Compton  
Earl & Dorothy Craven  
Gordon & Cleta Crisman  
I. Aven & Susan Crisman  
Leo & Abigail Crisman  
Stuart & HeeJa Crisman  
Roy & Carolyn Crow  
Geraldine Custer  
Merrell & Mary Dade

Terry & Connie Dalke  
David & Susan DeLano  
James & Patricia DeLapp  
Paul & Veta Drabin  
John & Marilyn Duke  
Elizabeth Edwards  
Margaret Edwards  
David & Pam Erickson  
Paul & Sharon Eslinger  
Richard & Patricia Evans  
Sam & Dorothy Farmer  
Steven & Denise Fellows  
Lon & Raelene Fendall  
Bill & Ruth Field  
Gale & Rusti Field  
Peggy & Robert Fowler  
Berram & Eleanor Frazier  
Stephenn & Glenda Gilroy  
Mic & Jennine Gwilym  
Dale & Shirley Hadley  
David Hampton  
Lewis Hampton  
Doris Hampton  
Ruthanna Hampton  
Tim & Judy Harde  
P. Steven & Jewell Harmon  
Philip & Esther Harmon  
Colin & Sheila Hart  
Esther Hays  
C. Fred & Mildred Head  
Virginia Helm  
Rosa Hester  
John & Alice Hill  
Bonnie Hollinshead  
John & Linda Hotton  
Barry Hubbard  
Margaret Huber  
Ingrid & Tom (Lemons)  
J's Restaurant  
Gary & Sharon Jackson  
Richard & Laurel Jensen  
J. P. & Lulu Johnson  
John & Cindy Johnson  
Sue Johnson  
Verna Kellar  
David & Carol Kelley  
Dorothy Kellis  
Beverly Kelsven

Wayne & Bertie Roberts  
Shirley & Tom Roberts  
Raymond & Diane Rotolo  
Carl Sandoz  
J. Louis & Mary Sandoz  
Mel & Carol Schroeder  
James & Winona Selby  
Nigel & Polly Shockey  
Clair & Lois Smith  
Neil & Olga Smith  
Wayne & Lenore Smitherman  
Charlton & Lenore Smitherman  
Dan & Linnea Stahnecker  
Ed & Carolyn Staples  
Eileen & Linda Stevens  
Valda Sweet  
Dean & Lillian Tate  
Craig & Kathy Taylor  
Florence Thomas  
George & Dorothy Thomas  
Kent & Jeanie Thornburg  
Florence VanHorn  
Curt & Short Walker  
May Wallace  
Randy & Elizabeth Ware  
Floyd & Arline Watson  
Harold & Marjorie Weesner  
Frederic Weissert  
Walter & Edna Wilson  
(Sam Wheeler)  
Kathleen Wilhite  
Marion & Ruth Wilhite  
Steven & Nancy Wilhite  
Geraldine Willcuts  
Robert & Jane Willcutt  
W. A. & Mary Lou Willcutt  
D. Keith & Alyce Williams  
Kenneth & Edna Williams  
Bill & Judie Wilson  
Lyle & Naomi Wilson  
Marion & Margaret Winslow  
Michael Wirta  
Ken & Ethel Yergen

## FACULTY & STAFF

*Non-faculty and non-staff spouses are indicated in parentheses.*

Dave (& Patricia) Adrian  
Michael (& Margaret) Allen  
Flora Allen  
Richard Allen  
Paul (& Carla) Anderson  
Sally Andrews  
Harold (& Betty) Ankeny  
Dirk (& Nancy) Barram  
Ralph Beebe  
Wanda Beebe  
Gary (& Sue) Bertrand  
Gary (& June) Brown  
Linda Byrd  
Paul (& Sharon) Chamberlain  
Anita Cirulis  
Randy Comfort  
Wes Cook  
Earl (& Dorothy) Craven  
Steven (& Karen) Curtis  
Kathryn (& Dick) Elchenberger  
Sam (& Dorothy) Farmer  
Gary (& Susan) Fawver  
Jim (& Gale) Foster  
Bob Gilmore  
Maurine Gilmore  
Steve (& Kathy) Grant

Mary Green \*  
William Green \*  
Dennis (& Janet) Hagen  
Steven (& Diane) Hannum  
Thomas (& Elizabeth) Head  
Hank Helsabeck  
Jo Helsabeck  
Roy (& Verla) Hiebert  
Edward (& Mary Etta) Higgins  
Julie (& Loren) Hobbs  
Dave (& Marge) Howard  
Barry Hubbell  
James Jackson  
Pam Jackson  
John (& Cindy) Johnson  
Merrill (& Candace) Johnson  
Warren (& Pauline) Koch  
Beth LaForce  
Pat Landis  
Lawrence (& Marlys) Lebow  
Dennis (& Joan) Littlefield  
Janet Lyda  
John Lyda  
Howard (& Margaret) Macy  
Neal (& Reva) McBride  
Mark (& Lisa) McMinn  
Don (& Virginia) Millage  
Arnie Mitchell  
Barb Mitchell

Ronald Mock  
Lee (& Gracye) Nash  
Danya (& Ken) Ochsner  
Don (& Theo) Powers  
Letha (& Todd) Quinn  
Finley (& Norma) Randolph  
Jeffrey (& Debbie) Rickey  
Arthur (& Fern) Roberts  
Raymond (& Diane) Rotolo  
Mel (& Carol) Schroeder  
Byron Shenk  
Paul Sloan  
Toni Sloan  
Phillip (& Karen) Smith  
Linnea (& Dan) Stahlnecker  
Ronald (& Carolyn) Stansell  
Carolyn (& Ron) Staples  
Edward (& Linda) Stevens  
Craig (& Kathy) Taylor  
Clyde (& Carol) Thomas  
Manfred (& Vicki) Tschan  
Jeffrey (& Deanna) VandenHoek  
Mark (& Denise) Vernon  
Marjorie (& Harold) Weesner  
Donna West  
Gerald (& Diane) Wilson  
Michael Wirtz

\*Honorary staff



## CHURCHES

Adna Evangelical Church  
Ashland First Baptist Church  
Bakersfield Friends Community Church  
Beaverton Church of the Nazarene  
Bethany Bible Church  
Bethel Evangelical Church  
Boise Friends Church  
Brawley Spanish Friends Church  
Caldwell Friends Church  
Camano Chapel  
Camas Friends Church  
Canby Christian Church  
Catalica Church  
Cherry Grove Friends Church  
Citrus Heights Friends Church  
Clackamas Park Friends Church  
Cloverdale Church of the Nazarene  
Crossroads Community Church  
Dallas Christian Missionary Alliance  
Dallas Church of the Nazarene  
Dayton Pioneer Church  
Denair Friends Church  
Eugene Friends Church  
Faith Evangelical Church  
Florence First Baptist Church  
Garden Grove Friends Church  
Glasgow Evangelical Church  
Glendora Friends Church  
Glentair Evangelical Church

Grace Baptist Church  
Grace Community Church  
Greek Orthodox Community Church  
Greenleaf Friends Church  
Hachioji Glory Church  
Hayden Lake Friends Church  
Hillsboro Friends Church  
Holtville Friends Church  
Hope Community Church  
Hopewell Community Church  
Klamath Falls Friends Church  
Lynwood Friends Church  
Medford Friends Church  
Melba Friends Church  
Meridian Friends Church  
Metolius Friends Church  
Monmouth First Baptist Church  
Monterey Church of the Nazarene  
Netarts Friends Church  
New Hope Evangelical Church  
New Hope Community Church  
Newberg First Presbyterian Church  
Newberg Free Methodist Church  
Newberg Friends Church  
Newberg Unprogrammed Meeting of Friends  
Newport Church of the Nazarene  
North Valley Friends Church

Northwest Yearly Meeting of Friends Church  
Novato Bethel Baptist Church  
Olympic View Friends Church  
Oregon City Evangelical Church  
Post Falls Friends Church  
Quincy Free Methodist Church  
Reedwood Friends Church  
Rolling Hills Community Church  
Rose Drive Friends Church  
Rose Valley Friends Church  
Salem First Evangelical Church  
Salem Free Methodist Church  
Silver Beach Community Church  
Silverton Friends Church  
South Salem Friends Church  
Spokane Friends Church  
Spring Valley Friends Church  
St. Helens Free Methodist Church  
Star Friends Church  
Talent Friends Church  
Tigard Friends Church  
Treasure Valley Christian Center  
Troy Christian Fellowship  
Vancouver Friends Church  
West Chehalis Friends Church  
West Hills Friends Church  
Whitney Friends Church  
Winston Church of the Nazarene  
Yamhill Christian Church

## INDIVIDUALS

Dale & Neta Adams  
Leona Aebischer  
Bill Alexander  
Marjorie Allain  
Linda Althouse  
Donald & Rosemary Amato  
Ray & Kim Amsinger  
Amanda Anderson  
Chuck & Kristen Anderson  
David & DeRonah Anderson  
David & Elizabeth Anderson  
Tom & Shari Anderson  
Rory & Lori Antis  
Hazel Antrim  
Levi & Bonnie Arbogast  
Glenn & Donnalee Archibald  
Ralph & Carol Arensmeier  
Thom & Cheryl Armstrong  
Jim & Glenda Asher  
L. William & Melody Ashworth  
Alberta Attrell  
Hawkin & Dorothy Au  
Helen Austin  
Larry & Judy Austin  
David & Louise Avery  
Robert & Christy Avila  
James Babbitt  
Paul & Apal Bailey  
R. Jay & Jeanette Baker  
R. Wilbur Baker  
Ralph & Alberta Baker  
Mr. & Mrs. Ron Baker  
Mark & Chris Baldwin  
Thayne & Mary Anne Balzer  
Larry & Kathleen Bannister  
Ronald & Nancy Barbe  
John & Virginia Barnes  
Ronald & Margaret Barry  
Gordon & Katherine Baugh  
James & Renee Baxter  
William Beard  
Robert Becker  
Marvin & Charlotte Beckett  
Bob & Valerie Beckman  
Roger & Elizabeth Beed  
Julius & Helen Beesley  
LeRoy & Paula Benham  
Lorinda Bergen  
Tracy & Stacy Berkey  
William & Toija Beutler  
Joseph & Barbara Bielagus

Georgia Bilette  
Jerry & Elizabeth Bingold  
Debbie Birth  
Lawrence & Elaine Bisbee  
James Bishop  
Terry & Patty Bittner  
Phillip & Lisa Blackburn  
Robert & Rebecca Blakely  
Mr. & Mrs. Ray Blohm  
Jennie Blough  
Steven & Melani Boek  
Vernon & Becky Boegadine  
Jack & Carol Boersma  
Dick Bohy  
Michael & Connie Bondi  
Mark & Janet Bornem  
Dixie Bosley-Smith  
Carl Bowman  
Terrence & DeeAnn Boyd  
A. Day Bradley  
Marlee Bradley  
Jack & Fern Brecht  
Ted & Carol Bremner  
Thomas & Janis Brentano  
Bill & Nancy Brewer  
James & Irene Brougher  
Violet Brown  
Kristin Brubaker  
Randy & Marci Bryan  
James & Jane Bryson  
Jenny Buchholz  
Dale & Marie Buckley  
John & Linda Budan  
Roy & Jo Bunch  
Ken & Janette Bunn  
Mary Bunn  
Gary & Karen Burkholder  
Frank & Erlene Butler  
Herman & Lydia Butler  
Marshall & Elenore Byrd  
David & Patricia Calkins  
J. Duncan & Cynthia Campbell, Jr.  
Dean & Edith Campbell  
Wayne & Shirley Canaday  
Charles Canfield  
Scott & Diane Canfield  
Richard & Naomi Carbery  
Michael & Kay Carlisle  
Richard & Judith Carlson  
Greg & Peggy Carr

Jim & Janell Casey  
John & Sarah Castles  
John & Ada Chamberlain  
Dion & Kathy Chamblin  
Ralph & Marie Chapman  
Craig & Ella Chisholm  
Mark & Heather Chism  
Al & Judy Christensen  
Harry & Joanne Christensen  
Jim & Linda Christison  
David & Susanne Christopher  
Jean Clark  
Marvin & Helen Clarkson  
Margaret Clemmens  
Lance & Pat Coe  
Edith Comfort  
Frieda Compton  
David & Connie Conant  
Ray & Vicki Congdon  
Cliff & Sally Conklin  
Glen & Shirley Cooper  
Steve & Doris Cosler  
George & Jeanne Council  
David & Theresa Cowan  
Wesley & Patricia Coyner  
Donna Craig  
Bob & Marcie Crandall  
Iryl & Neva Crisman  
Mr. & Mrs. Gary Cruickshank  
Harvey & Dolores Culbertson  
Ralph & Judy Cunningham  
Victor & Annemarie Curtis  
Roy & Gertrude Curtis  
Geraldine Custer  
Merrell & Mary Dade  
Bill & Becky Daley  
Henry & Lianda Danforth  
Gene & Patt Dardis  
Andrew & Robin Davis  
John & Rhonda Davis  
Michael & Rosemary Day  
David & Betty Ann DeHaven  
W. Ezra & Frances DeVol  
Dorothy Denney  
Eileen Savio Desmond  
Tom & Viola Dideum  
Alice Dixon  
Reta Dixon  
John & Connie Dolan  
Bob & Sandy Drake  
Larry & Kerry Draper

Mr. & Mrs. Vern Dreyer  
Emmett & Celia Dromgoole  
Leroy & Donna Dunn  
Victor Duran  
Joana Eckhardt  
D. Kelly & Barbara Edie  
Fred & Lois Edmundson  
Margaret Edwards  
Kenneth & Geneva Eichenberger  
Tim & Rhonda Eide  
Michael & Lucky Emert  
Isabelle Emry  
Barbara Erb  
Rodney & Marlys Ericksen  
Charles & Mary Jane Erwin  
Edwin & Cynthia Espana  
Mary Etter  
Robert & Irene Farris  
Bert & Kay Farris  
Michelle Fawver  
Gary & Ellie Fendall  
Lon & Raelene Fendall  
Roger & Loretta Fendall  
Rose Fendall  
Donald Fife  
Richard & Margie Fink  
Floyd & Nora Finsand  
Dan & Susan Fisher  
Dean & Ann Fisher  
James & Jacqueline Fisher  
Robert & Christine Fitzgerald  
Bruce & Jeanette Fleming  
Floyd & Susan Frakes  
Frances French  
Douglas & Laurie Friant  
Linda Fullerton  
William Gaboury  
Dorothy Gage  
Marjorie Gage  
Mr. & Mrs. Keith Galitz  
Montgomery Gant  
J. Osmond & Marcia Garrick  
J. Spencer & Mary George  
Darrell & Joyce Gerhardt  
Joseph Gerick  
Egon & May Gerner  
Mona Gettmann  
Paul Gibbons  
(Continued)

## BUSINESSES & CORPORATIONS

A-dec, Inc.  
ARA Services  
Alexander Oil Company  
Apple Computer, Inc.  
Beyrouly Insurance, Inc.  
Boeing Company  
Centel Corporation  
Custom Food Products, Inc.  
Fantasy Travel  
Farmers Group, Inc.  
Folkways Travel  
Fred Casey Real Estate  
General Telephone Co. of the NW  
General Accident Insurance  
Hewlett-Packard Company  
IBM Corporation  
Intel Corporation  
Interstate Wood Products  
J's Restaurant  
J. C. Milne Construction  
John Hancock Insurance

K-Mart Corporation  
Krohn's Appliance Center  
Lumbermen's  
Marriott Corporation  
Merisel  
Montana Power Company  
National Gas Company  
Newberg Graphic  
Newberg Tire Company  
Peninsula Times Tribune  
Philip Morris Company  
Seafirst Bank  
Smurfit Newsprint Corporation  
State Farm Insurance  
TRINNOVA Corporation  
Times Mirror Company  
Transgraphics, Inc.  
U. S. Bancorp  
U. S. West  
Ushio Oregon, Inc.  
Ye Olde Pizza Shoppe

## PARENTS

Peter & Joan Anderson  
Wendell & Donita Barnett  
Brian & Janice Beals  
Ed & Rita Bingham  
David & Nancy Brown  
Phil & Kay Burgl  
Thomas & Billie Davidson  
David & Pam Erickson  
Bob & Maurine Gilmore  
Marvin & Viola Grandle  
Dennis & Janet Hagen  
Hank & Jo Helsabeck  
Dave & Marge Howard  
Donald & Jane Huwe  
Roy & Cheryl Johnson  
Harold & Darlene LaVeine  
Michael & Shirley Lampkin  
John & Janet Lyda  
Roger & Claudia Martell  
Charles & Nancy Mylander  
Vuong Duc Nguyen  
Dan & Judi Nolita  
David Ramsey  
Victor & Sheryl Peterson  
Lloyd & Marilyn Pruitt  
Bill & Jan Rasmussen  
Michael & Barbara Tauriainen  
Harold & Nancy Thomas  
Ken & Rachel VandenHoek  
Tom & Andrea Waits  
John & Georgiana Warta  
Dennis & Phyllis Williams



## FOUNDATIONS

Alcoa Foundation  
Collins Foundation  
Eli Lilly Foundation  
GTE Foundation  
Henry Parsons Crowell Trust  
International Paper Foundation  
May Stores Foundation  
Metropolitan Life Foundation  
NCR Foundation  
Oregon Community Foundation  
Smithkline Beckman Foundation  
Spring Street Foundation  
Tektronix Foundation  
Teledyne Charitable Trust  
Unocal Foundation  
Wheeler Foundation

## OREGON INDEPENDENT COLLEGE FOUNDATION

George Fox College received \$161,802 from the Oregon Independent College Foundation as its share of \$1,722,539 received by the Foundation from 392 donors.

## MISCELLANEOUS

ASCGFC  
Christian College Consortium  
George Fox College Auxiliary  
Lewis & Clark College  
Quaker Gardens

## INDIVIDUALS (Continued)

Charles & Ruth Gliman  
 Charles & Hattie Gilmore  
 Stephens & Karen Glenn  
 Dennis & Ruth Goetts  
 Harry & Dorothy Holman  
 Howard & Lynn Holmes  
 Robert & Connie Housman  
 Margaret Huber  
 Chris & Bronwen Hunt  
 Robert & Dorothy Hunter  
 Norman & Janice Huston  
 Larry & Linda Hutchins  
 Stanley & Jane Huwe  
 Larry & Kimberly Ikehara  
 Kay Ingold  
 Charles & Kathleen Iler  
 Vic & Nancy Insley  
 Charles & Vera Iverson  
 Denny & Amy Jackson  
 Gordon & Pauline Jaffe  
 Charles & Etta Marie James  
 Myron & Virginia James  
 Mary Javi  
 Richard & Fodene Jarvill  
 Richard & Laurel Jensen  
 David & Barbara Jennigan  
 Ronald & Linda Jerome  
 Mrs. Charles Johnson  
 Gerald & Marie Johnson  
 J. P. & Lulu Johnson  
 Steve & Connie Johnson  
 Sue Johnson  
 Henry & Olga Junemann  
 Brian Kaicher  
 Allen & Martha Keilas  
 Basil & Kathy Kelley  
 Dorothy Kellis  
 Dewey Wayne & Robin Kelly  
 John Kelly  
 Peggy Kelly  
 Beverly Kelsven  
 Douglas & Deborah Kemper  
 Cliff & Lois Kenagy  
 Melvin & Lila Kern  
 Charles & Sharon Kidd  
 Paul & Karen Kirsch  
 Lavonne Klohn  
 Robert & Rose Knierrim  
 Jessie & Kelli Kobs  
 Ezra & Hanni Koch  
 Gary & Beverly Kolari  
 Mary Konke-Sutton  
 Keith & Lynn Kramer  
 John & Tudy Kramp  
 Doug Kuns  
 Frank & Mary Kurz  
 Carol Kviz

Bryan & Rhonda Holland  
 Bonnie Hollinshead  
 Jack & Helen Holman  
 James & Dorothy Holman  
 Howard & Lynn Holmes  
 Robert & Connie Housman  
 Margaret Huber  
 Chris & Bronwen Hunt  
 Robert & Dorothy Hunter  
 Norman & Janice Huston  
 Larry & Linda Hutchins  
 Stanley & Jane Huwe  
 Larry & Kimberly Ikehara  
 Kay Ingold  
 Charles & Kathleen Iler  
 Vic & Nancy Insley  
 Charles & Vera Iverson  
 Denny & Amy Jackson  
 Gordon & Pauline Jaffe  
 Charles & Etta Marie James  
 Myron & Virginia James  
 Mary Javi  
 Richard & Fodene Jarvill  
 Richard & Laurel Jensen  
 David & Barbara Jennigan  
 Ronald & Linda Jerome  
 Mrs. Charles Johnson  
 Gerald & Marie Johnson  
 J. P. & Lulu Johnson  
 Steve & Connie Johnson  
 Sue Johnson  
 Henry & Olga Junemann  
 Brian Kaicher  
 Allen & Martha Keilas  
 Basil & Kathy Kelley  
 Dorothy Kellis  
 Dewey Wayne & Robin Kelly  
 John Kelly  
 Peggy Kelly  
 Beverly Kelsven  
 Douglas & Deborah Kemper  
 Cliff & Lois Kenagy  
 Melvin & Lila Kern  
 Charles & Sharon Kidd  
 Paul & Karen Kirsch  
 Lavonne Klohn  
 Robert & Rose Knierrim  
 Jessie & Kelli Kobs  
 Ezra & Hanni Koch  
 Gary & Beverly Kolari  
 Mary Konke-Sutton  
 Keith & Lynn Kramer  
 John & Tudy Kramp  
 Doug Kuns  
 Frank & Mary Kurz  
 Carol Kviz

Garry & Cheryl Laine  
 Steven & Debra Lakamp  
 James & Carolyn Lamborghini  
 Anne Lanning  
 Carroll & Nadine Larabee  
 R. W. & Elaine Larkey  
 Eric & Mary Kay Larsen  
 Robert & Etta Laughland  
 Lauren King  
 Kimberly Lawrence  
 Larry & Klesben Leahy  
 James & Colette Leatherman  
 Tarcy & Priscilla Lee  
 David & Lianne Lemert  
 Cheryl Lenzer  
 Mary Beth Lewis  
 Kenneth & Helen Liedtke  
 Steve & Debbie Liepe  
 Betsy Lindsay  
 William & Virginia Little  
 Vincent & Catherine Loewen  
 Carl & Laura Ludolph  
 Trent & LeAnn Lutz  
 Hubert & Shirley Mardock  
 Seth & Cora Marks  
 Harry & Kathleen Marsh  
 Daniel & Debbie Marshall  
 Kenneth & Laura Martin  
 Philip & Cathy Martin  
 Tim & Maureen Mast  
 Ronald & Sharon Mathers  
 Richard & Kathy May  
 Andrew & Mary Mayer  
 Herbert & Nancy McCann  
 Patsie McClintock  
 Adrienne McConaughy  
 Bill & Marcia McCoirke  
 Mike & Jacquelyn McCoy  
 Mark & Kathy McCrain  
 Mark & Lynn McDonnell  
 Edgar McDowell  
 James & Mary Jo McIntosh  
 John & Betty McKee  
 Garth & Denise McKnight  
 James & Susan McMillan  
 Gordon & Donna McMillan  
 John & Dorothy McNeil  
 Genette McNichols  
 Larry & Lorelei McQuay  
 Scott & Nancy Melrose  
 Michael & Susan Meredith  
 James & Hannah Meredith  
 Michael Merrin  
 Richard & Linda Peletier  
 Elizabeth Pemberton  
 Clarence Perisho

Harvey & Virginia Scott  
 Harry & Ruth Seelye  
 James & Winona Solby  
 Robert & Rebecca Sellers  
 Mr. & Mrs. Ted Shafer  
 David & Lynn Shelhorn  
 Mr. & Mrs. Larry Shortill  
 Greg & Ann Skipper  
 Daniel & Ethel Stabaugh  
 Charles Slaughter  
 Wilfred Slick  
 David & Barbara Sloan  
 Bill & Paula Smith  
 Kara Smith  
 Neil & Olga Smith  
 PDean & Virginia Smith  
 Steven & Penelope Smith  
 Robert & Catherine Spang  
 Willis & June Spangler  
 John & Harriet Sparrows  
 Tom & Vicki Spear  
 R. E. & Helen Spear  
 Roger & Deborah Spring  
 Donald & Cory Stainbrook  
 Mr. & Mrs. Stora Stanga  
 Tom & Vicki Stora  
 Eugenia Stabbins  
 John & Kathleen Stein  
 Rose Stephens  
 John & Jane Stewart  
 John & Nancy Stewart  
 LeRoy & Mildred Stewart  
 William & Susan Stewerson  
 Roy & Ann Stout  
 William & Mary Stow  
 Richard & Wanda Westwood  
 Melvin Wheeler  
 Edward & Debra Whittall  
 Richard & Kathleen Wilgus  
 Kathleen White  
 W. A. & Jerry Lou Willitt  
 Kenneth & Edna Williams  
 James & Marit Willis  
 Edith Wines  
 Stephen & Leslie Winstead  
 Jeff & Jaynie Wittkala  
 Debra Wold  
 Thomas & Pam Wolf  
 Ray Wolfe  
 Andy & Kelley Wong  
 Paul Wong  
 William & Bernice Wood  
 Beryl Woodward  
 Donald Wright  
 Terry & Vivian Wymore  
 Samuel & Pamela Young  
 Donald & Anne Young  
 David & Dominique Zarewski  
 Phil & Vonda Zollo  
 Bill & Kathleen Zornley  
 Glenn Zurcher

Lois Houston Phillips  
 Stephen (& Ter) Ross  
 Number in Class: 40  
 Number of Donors: 13  
 Participation: 33%  
 Shirley Gurn Boerlin  
 Virginia Leach (& Dean) Freeman  
 Genevieve Mills (& Charles) Hall  
 John Lyda  
 Naomi Tuning Marsters  
 Doris Pearson Mech  
 Eugene Morse  
 Eugene Morse  
 Richard Mord Mott  
 Betty Walls Sargent  
 Herbert Sargent  
 Naomi Martin Wilson  
 Number in Class: 31  
 Number of Donors: 8  
 Participation: 25%  
 Alfreda Pinthor Batdorff  
 Leona Jeffery  
 Iverson Lyda Lair  
 Gordon Martin  
 Paul (& Meredith) Morse  
 Phyllis Archibald Morse  
 Gerald Pierce  
 Number in Class: 38  
 Number of Donors: 12  
 Participation: 32%  
 Dale Campbell  
 Maurice Fankhauser Chandler  
 Sandra Smith Dealy  
 Richard (& Valorie) Harrison  
 Damon Heinrich  
 Eugene (& Norma) McDonald  
 Richard Phillips  
 Jane Weber Willcuts  
 Robert Willcuts

Lois Houston Phillips  
 Stephen (& Ter) Ross  
 Number in Class: 40  
 Number of Donors: 13  
 Participation: 33%  
 Shirley Gurn Boerlin  
 Virginia Leach (& Dean) Freeman  
 Genevieve Mills (& Charles) Hall  
 John Lyda  
 Naomi Tuning Marsters  
 Doris Pearson Mech  
 Eugene Morse  
 Eugene Morse  
 Richard Mord Mott  
 Betty Walls Sargent  
 Herbert Sargent  
 Naomi Martin Wilson  
 Number in Class: 31  
 Number of Donors: 8  
 Participation: 25%  
 Alfreda Pinthor Batdorff  
 Leona Jeffery  
 Iverson Lyda Lair  
 Gordon Martin  
 Paul (& Meredith) Morse  
 Phyllis Archibald Morse  
 Gerald Pierce  
 Number in Class: 38  
 Number of Donors: 12  
 Participation: 32%  
 Dale Campbell  
 Maurice Fankhauser Chandler  
 Sandra Smith Dealy  
 Richard (& Valorie) Harrison  
 Damon Heinrich  
 Eugene (& Norma) McDonald  
 Richard Phillips  
 Jane Weber Willcuts  
 Robert Willcuts

Lois Houston Phillips  
 Stephen (& Ter) Ross  
 Number in Class: 40  
 Number of Donors: 13  
 Participation: 33%  
 Shirley Gurn Boerlin  
 Virginia Leach (& Dean) Freeman  
 Genevieve Mills (& Charles) Hall  
 John Lyda  
 Naomi Tuning Marsters  
 Doris Pearson Mech  
 Eugene Morse  
 Eugene Morse  
 Richard Mord Mott  
 Betty Walls Sargent  
 Herbert Sargent  
 Naomi Martin Wilson  
 Number in Class: 31  
 Number of Donors: 8  
 Participation: 25%  
 Alfreda Pinthor Batdorff  
 Leona Jeffery  
 Iverson Lyda Lair  
 Gordon Martin  
 Paul (& Meredith) Morse  
 Phyllis Archibald Morse  
 Gerald Pierce  
 Number in Class: 38  
 Number of Donors: 12  
 Participation: 32%  
 Dale Campbell  
 Maurice Fankhauser Chandler  
 Sandra Smith Dealy  
 Richard (& Valorie) Harrison  
 Damon Heinrich  
 Eugene (& Norma) McDonald  
 Richard Phillips  
 Jane Weber Willcuts  
 Robert Willcuts

## ALUMNI

Non-alumni spouses are indicated in parentheses.

**1914-34**  
 Number in Classes: 111  
 Number of Donors: 39  
 Participation: 35%  
 Harold (& Leona) Aebischer  
 Loue Kendall Allen  
 Louise Nelson (& Melvin) Anderson  
 John Asstetford  
 Owen Baker  
 F. W. Baker  
 Genevieve Badley Cole  
 Evelyn Dimon  
 Mary Elliott Edmundson  
 Beth Paulsen Elliott  
 Doris Kivett Hampton  
 Dorothea Norayke Hart  
 Roger Hart  
 Rosa Aebischer Hester  
 Stanley Kendall  
 Esther Klages  
 Marguerite Cook Lawson  
 Florence Lee Lienard  
 Hermena Fankhauser Lundquist  
 Audrey France Meyer  
 Elizabeth Carey Minas  
 Lela Jones Morrill  
 Robert Morrill  
 Curtis Morse  
 Homer Nordyke  
 Della Hanville Osburn  
 Loyde Osburn  
 Ana Hicks (& R. D.) Rowley  
 Frank Sandoz  
 Richard Schraad  
 Virginia L. Tugstone Sweet  
 Paul W. Turrell (& John) Vernon  
 Paul Willis  
 Marion Winslow  
 Rachel Huntington Winslow  
 Gwen Hanson Winters  
 Ethel Newberry Yergen  
 Kenneth Yergen  
 Ralph Yergen

**1940-42**  
 Number in Classes: 48  
 Number of Donors: 10  
 Participation: 21%  
 Lucille Thornsberry Crane  
 Irene Swanson (& Lewis) Haisch  
 Hazel Houser Harrison  
 Virginia Heacock Helm  
 Thelma Tharrington Martin  
 Ross (& Evelyn) McIntyre  
 Fern Nixon Roberts  
 Wesley Smith  
 Dean (& Lillian) Tate  
 George (& Dorothy) Thomas  
**1943**  
 Number in Class: 21  
 Number of Donors: 8  
 Participation: 38%  
 Elenita Mardock Bales  
 George Bales  
 Abigail Miller Crisman  
 Marion Doble  
 Robert Ralphs  
 Dorwin Smith  
 James Spirup  
**1944**  
 Number in Class: 37  
 Number of Donors: 10  
 Participation: 27%  
 Shirley Helm Carter  
 Marjorie Craven  
 Lois Morrill Harmon  
 Frank Haskins  
 Mahlon (& Haze) Macy  
 Harvie McCaffree  
 Kathleen Lazier  
 Arthur Roberts  
 Wayne (& Bernie) Roberts  
 Florence Swanson Thomas  
**1945**  
 Number in Class: 27  
 Number of Donors: 9  
 Participation: 33%  
 Leo Crisman  
 Eleanor Ellis Doty  
 G. Burton (& Margaret) Frost  
 Mona Cowley (& Lowell) Hadley  
 Lois Willie Haskins  
 Barbara Garrett Houser  
 Deane Roberts  
 Charlton (& Core) Smitherman  
 Geratune Tharrington Willcuts  
**1946**  
 Number in Class: 18  
 Number of Donors: 7  
 Participation: 39%  
 Elwood Egelston  
 Marguerite Nordyke Egelston  
 Mildred Haverstick Mirthorne  
 Lela Cressman Roberts  
 Eleanor Fowler Smith  
 Betty Craven Spirup  
**1947**  
 Number in Class: 16  
 Number of Donors: 5  
 Participation: 31%  
 Reuben Cogswell  
 Leita Hockett  
 Glenn Koch  
 Claude Lewis  
 Roger Mirthorne  
**1948**  
 Number in Class: 20  
 Number of Donors: 6  
 Participation: 30%  
 Divonna Schweitzer Crecellus  
 Ronald Crecellus

Pauline Ireland Koch  
 Gordon St. George  
 D. Keith (& Alyce) Williams  
**1949**  
 Number in Class: 49  
 Number of Donors: 19  
 Participation: 39%  
 Beth Hockett (& Vern) Bagley  
 Martha Barnard  
 Dorothy Baratt  
 Vern Brightburn  
 Eleanor Burton  
 Helen Antiam Cadd  
 Richard Cadd  
 Earl (& Dorothy) Craven  
 Jacquelyn Davis (& Clyde) Dwiggins  
 Mary McClintock Hadley  
 Norval Hadley  
 Verla Aebischer (& Roy) Hiebert  
 Virginia Dixon Johnson  
 Lois White Jones  
 Verna Keller  
 Leroy Neifert  
 Colleen Bybee St. George  
 Ellen Bain Warner  
 Floyd Watson  
**1950**  
 Number in Class: 52  
 Number of Donors: 26  
 Participation: 50%  
 Gertrude Haworth Ankeny  
 Harlow Ankeny  
 Enid Briggs  
 Roderick (& Leona) Falk  
 Bertranda Lazier  
 Homer Friddle  
 Homer Hadley  
 Mildred Thiessen Hadley  
 Frances Haldy  
 Esther Severson Haun  
 Keith Hinshaw  
 Darrol Hockett  
 Maurice Magee  
 Kenneth Miller  
 Nadine Fodge Mukey  
 Elva McCardell Neifert  
 D. Ellis (& Julie) Roberts  
 Lois Clark Smith  
 J. D. Stanley  
 Velma McClintock (& Clarence) frost  
 Raymond Warner  
 Arline Frazee Watson  
 Ruth English White  
 Marion White  
**1951**  
 Number in Class: 39  
 Number of Donors: 15  
 Participation: 38%  
 Betty Orthey Ankeny  
 Leona Gurn Baker  
 Earl Burton  
 Norma Durr Beebe  
 Walter Dick Brightup  
 G. Caroline Engle  
 Eleanor Armstrong Frazier  
 Gene Hockett  
 Margaret Shattuck Lemmons  
 Cyrus (& Sylvia) Littlefield  
 Margaret Dickson Magee  
 Hal May  
 June Knobel May  
 Wayne Piersall  
 Martha Lemmons Puckett  
**1952**  
 Number in Class: 43  
 Number of Donors: 18  
 Participation: 42%  
 J. D. Baker  
 William Bales  
 Melbourne Booth

Lois Houston Phillips  
 Stephen (& Ter) Ross  
 Number in Class: 40  
 Number of Donors: 13  
 Participation: 33%  
 Shirley Gurn Boerlin  
 Virginia Leach (& Dean) Freeman  
 Genevieve Mills (& Charles) Hall  
 John Lyda  
 Naomi Tuning Marsters  
 Doris Pearson Mech  
 Eugene Morse  
 Eugene Morse  
 Richard Mord Mott  
 Betty Walls Sargent  
 Herbert Sargent  
 Naomi Martin Wilson  
 Number in Class: 31  
 Number of Donors: 8  
 Participation: 25%  
 Alfreda Pinthor Batdorff  
 Leona Jeffery  
 Iverson Lyda Lair  
 Gordon Martin  
 Paul (& Meredith) Morse  
 Phyllis Archibald Morse  
 Gerald Pierce  
 Number in Class: 38  
 Number of Donors: 12  
 Participation: 32%  
 Dale Campbell  
 Maurice Fankhauser Chandler  
 Sandra Smith Dealy  
 Richard (& Valorie) Harrison  
 Damon Heinrich  
 Eugene (& Norma) McDonald  
 Richard Phillips  
 Jane Weber Willcuts  
 Robert Willcuts

Lois Houston Phillips  
 Stephen (& Ter) Ross  
 Number in Class: 40  
 Number of Donors: 13  
 Participation: 33%  
 Shirley Gurn Boerlin  
 Virginia Leach (& Dean) Freeman  
 Genevieve Mills (& Charles) Hall  
 John Lyda  
 Naomi Tuning Marsters  
 Doris Pearson Mech  
 Eugene Morse  
 Eugene Morse  
 Richard Mord Mott  
 Betty Walls Sargent  
 Herbert Sargent  
 Naomi Martin Wilson  
 Number in Class: 31  
 Number of Donors: 8  
 Participation: 25%  
 Alfreda Pinthor Batdorff  
 Leona Jeffery  
 Iverson Lyda Lair  
 Gordon Martin  
 Paul (& Meredith) Morse  
 Phyllis Archibald Morse  
 Gerald Pierce  
 Number in Class: 38  
 Number of Donors: 12  
 Participation: 32%  
 Dale Campbell  
 Maurice Fankhauser Chandler  
 Sandra Smith Dealy  
 Richard (& Valorie) Harrison  
 Damon Heinrich  
 Eugene (& Norma) McDonald  
 Richard Phillips  
 Jane Weber Willcuts  
 Robert Willcuts

**1953**  
 Number in Class: 30  
 Number of Donors: 9  
 Participation: 30%  
 Leland Brown  
 Stanley Cook  
 J. D. & Leola Fankhauser  
 Melba Chandler (& John) McGrath  
 Gene Mulkey  
 Janet Hinshaw Snow  
 Harold Weesner  
 Marjorie Larrance Weesner  
 Margaret Weber Winters  
**1954**  
 Number in Class: 41  
 Number of Donors: 14  
 Participation: 34%  
 Jean Foley Aitken  
 Ralph Beebe  
 Wanda Lewison Beebe  
 Lucille Lewis Brown  
 Marian Perry Brown  
 Jerry Carr  
 Carol Gossard Cobleigh  
 Lois Zickeloose Cox  
 James DeLapp  
 Patricia Keppinger DeLapp  
 Myra Chandler Ledeman  
 Verne Martin  
 Virginia Peters (& Don) Millage  
 Nigel (& Polly) Shockey  
**1955**  
 Number in Class: 31  
 Number of Donors: 7  
 Participation: 23%  
 J. Clinton Brown  
 Yvonne Hubbard Carr  
 Ruth Canfield Field  
 Lois Burnett Miller  
 Dorothy Oppenlander  
 Muriel Hoover (& Howard) Ostrin  
 Norman Winters  
**1956**  
 Number in Class: 26  
 Number of Donors: 11  
 Participation: 42%  
 Joyce Hoover Belt  
 Ardeh Beals (& Ray) Brown  
 Dorothy Gimbel Farmer  
 Sam Farmer  
 Donald Lamm  
 Nancy Trautman Lamm  
 Mary Bowden Lynch  
 Ellen Haines Martin  
 Alice Gaddis Ross  
 Fred (& Diane) Stevers  
 Peter Snow  
**1957**  
 Number in Class: 23  
 Number of Donors: 5  
 Participation: 22%  
 Lowell Hurd  
 Hideo (& Eiko) Kaneko  
 Janet Hight Lyda

Lois Houston Phillips  
 Stephen (& Ter) Ross  
 Number in Class: 40  
 Number of Donors: 13  
 Participation: 33%  
 Shirley Gurn Boerlin  
 Virginia Leach (& Dean) Freeman  
 Genevieve Mills (& Charles) Hall  
 John Lyda  
 Naomi Tuning Marsters  
 Doris Pearson Mech  
 Eugene Morse  
 Eugene Morse  
 Richard Mord Mott  
 Betty Walls Sargent  
 Herbert Sargent  
 Naomi Martin Wilson  
 Number in Class: 31  
 Number of Donors: 8  
 Participation: 25%  
 Alfreda Pinthor Batdorff  
 Leona Jeffery  
 Iverson Lyda Lair  
 Gordon Martin  
 Paul (& Meredith) Morse  
 Phyllis Archibald Morse  
 Gerald Pierce  
 Number in Class: 38  
 Number of Donors: 12  
 Participation: 32%  
 Dale Campbell  
 Maurice Fankhauser Chandler  
 Sandra Smith Dealy  
 Richard (& Valorie) Harrison  
 Damon Heinrich  
 Eugene (& Norma) McDonald  
 Richard Phillips  
 Jane Weber Willcuts  
 Robert Willcuts

Lois Houston Phillips  
 Stephen (& Ter) Ross  
 Number in Class: 40  
 Number of Donors: 13  
 Participation: 33%  
 Shirley Gurn Boerlin  
 Virginia Leach (& Dean) Freeman  
 Genevieve Mills (& Charles) Hall  
 John Lyda  
 Naomi Tuning Marsters  
 Doris Pearson Mech  
 Eugene Morse  
 Eugene Morse  
 Richard Mord Mott  
 Betty Walls Sargent  
 Herbert Sargent  
 Naomi Martin Wilson  
 Number in Class: 31  
 Number of Donors: 8  
 Participation: 25%  
 Alfreda Pinthor Batdorff  
 Leona Jeffery  
 Iverson Lyda Lair  
 Gordon Martin  
 Paul (& Meredith) Morse  
 Phyllis Archibald Morse  
 Gerald Pierce  
 Number in Class: 38  
 Number of Donors: 12  
 Participation: 32%  
 Dale Campbell  
 Maurice Fankhauser Chandler  
 Sandra Smith Dealy  
 Richard (& Valorie) Harrison  
 Damon Heinrich  
 Eugene (& Norma) McDonald  
 Richard Phillips  
 Jane Weber Willcuts  
 Robert Willcuts

Lois Houston Phillips  
 Stephen (& Ter) Ross  
 Number in Class: 40  
 Number of Donors: 13  
 Participation: 33%  
 Shirley Gurn Boerlin  
 Virginia Leach (& Dean) Freeman  
 Genevieve Mills (& Charles) Hall  
 John Lyda  
 Naomi Tuning Marsters  
 Doris Pearson Mech  
 Eugene Morse  
 Eugene Morse  
 Richard Mord Mott  
 Betty Walls Sargent  
 Herbert Sargent  
 Naomi Martin Wilson  
 Number in Class: 31  
 Number of Donors: 8  
 Participation: 25%  
 Alfreda Pinthor Batdorff  
 Leona Jeffery  
 Iverson Lyda Lair  
 Gordon Martin  
 Paul (& Meredith) Morse  
 Phyllis Archibald Morse  
 Gerald Pierce  
 Number in Class: 38  
 Number of Donors: 12  
 Participation: 32%  
 Dale Campbell  
 Maurice Fankhauser Chandler  
 Sandra Smith Dealy  
 Richard (& Valorie) Harrison  
 Damon Heinrich  
 Eugene (& Norma) McDonald  
 Richard Phillips  
 Jane Weber Willcuts  
 Robert Willcuts

**1958**  
 Number in Class: 40  
 Number of Donors: 13  
 Participation: 33%  
 Shirley Gurn Boerlin  
 Virginia Leach (& Dean) Freeman  
 Genevieve Mills (& Charles) Hall  
 John Lyda  
 Naomi Tuning Marsters  
 Doris Pearson Mech  
 Eugene Morse  
 Eugene Morse  
 Richard Mord Mott  
 Betty Walls Sargent  
 Herbert Sargent  
 Naomi Martin Wilson  
 Number in Class: 31  
 Number of Donors: 8  
 Participation: 25%  
 Alfreda Pinthor Batdorff  
 Leona Jeffery  
 Iverson Lyda Lair  
 Gordon Martin  
 Paul (& Meredith) Morse  
 Phyllis Archibald Morse  
 Gerald Pierce  
 Number in Class: 38  
 Number of Donors: 12  
 Participation: 32%  
 Dale Campbell  
 Maurice Fankhauser Chandler  
 Sandra Smith Dealy  
 Richard (& Valorie) Harrison  
 Damon Heinrich  
 Eugene (& Norma) McDonald  
 Richard Phillips  
 Jane Weber Willcuts  
 Robert Willcuts

Lois Houston Phillips  
 Stephen (& Ter) Ross  
 Number in Class: 40  
 Number of Donors: 13  
 Participation: 33%  
 Shirley Gurn Boerlin  
 Virginia Leach (& Dean) Freeman  
 Genevieve Mills (& Charles) Hall  
 John Lyda  
 Naomi Tuning Marsters  
 Doris Pearson Mech  
 Eugene Morse  
 Eugene Morse  
 Richard Mord Mott  
 Betty Walls Sargent  
 Herbert Sargent  
 Naomi Martin Wilson  
 Number in Class: 31  
 Number of Donors: 8  
 Participation: 25%  
 Alfreda Pinthor Batdorff  
 Leona Jeffery  
 Iverson Lyda Lair  
 Gordon Martin  
 Paul (& Meredith) Morse  
 Phyllis Archibald Morse  
 Gerald Pierce  
 Number in Class: 38  
 Number of Donors: 12  
 Participation: 32%  
 Dale Campbell  
 Maurice Fankhauser Chandler  
 Sandra Smith Dealy  
 Richard (& Valorie) Harrison  
 Damon Heinrich  
 Eugene (& Norma) McDonald  
 Richard Phillips  
 Jane Weber Willcuts  
 Robert Willcuts

Lois Houston Phillips  
 Stephen (& Ter) Ross  
 Number in Class: 40  
 Number of Donors: 13  
 Participation: 33%  
 Shirley Gurn Boerlin  
 Virginia Leach (& Dean) Freeman  
 Genevieve Mills (& Charles) Hall  
 John Lyda  
 Naomi Tuning Marsters  
 Doris Pearson Mech  
 Eugene Morse  
 Eugene Morse  
 Richard Mord Mott  
 Betty Walls Sargent  
 Herbert Sargent  
 Naomi Martin Wilson  
 Number in Class: 31  
 Number of Donors: 8  
 Participation: 25%  
 Alfreda Pinthor Batdorff  
 Leona Jeffery  
 Iverson Lyda Lair  
 Gordon Martin  
 Paul (& Meredith) Morse  
 Phyllis Archibald Morse  
 Gerald Pierce  
 Number in Class: 38  
 Number of Donors: 12  
 Participation: 32%  
 Dale Campbell  
 Maurice Fankhauser Chandler  
 Sandra Smith Dealy  
 Richard (& Valorie) Harrison  
 Damon Heinrich  
 Eugene (& Norma) McDonald  
 Richard Phillips  
 Jane Weber Willcuts  
 Robert Willcuts

Lois Houston Phillips  
 Stephen (& Ter) Ross  
 Number in Class: 40  
 Number of Donors: 13  
 Participation: 33%  
 Shirley Gurn Boerlin  
 Virginia Leach (& Dean) Freeman  
 Genevieve Mills (& Charles) Hall  
 John Lyda  
 Naomi Tuning Marsters  
 Doris Pearson Mech  
 Eugene Morse  
 Eugene Morse  
 Richard Mord Mott  
 Betty Walls Sargent  
 Herbert Sargent  
 Naomi Martin Wilson  
 Number in Class: 31  
 Number of Donors: 8  
 Participation: 25%  
 Alfreda Pinthor Batdorff  
 Leona Jeffery  
 Iverson Lyda Lair  
 Gordon Martin  
 Paul (& Meredith) Morse  
 Phyllis Archibald Morse  
 Gerald Pierce  
 Number in Class: 38  
 Number of Donors: 12  
 Participation: 32%  
 Dale Campbell  
 Maurice Fankhauser Chandler  
 Sandra Smith Dealy  
 Richard (& Valorie) Harrison  
 Damon Heinrich  
 Eugene (& Norma) McDonald  
 Richard Phillips  
 Jane Weber Willcuts  
 Robert Willcuts

Lois Houston Phillips  
 Stephen (& Ter) Ross  
 Number in Class: 40  
 Number of Donors: 13  
 Participation: 33%  
 Shirley Gurn Boerlin  
 Virginia Leach (& Dean) Freeman  
 Genevieve Mills (& Charles) Hall  
 John Lyda  
 Naomi Tuning Marsters  
 Doris Pearson Mech  
 Eugene Morse  
 Eugene Morse  
 Richard Mord Mott  
 Betty Walls Sargent  
 Herbert Sargent  
 Naomi Martin Wilson  
 Number in Class: 31  
 Number of Donors: 8  
 Participation: 25%  
 Alfreda Pinthor Batdorff  
 Leona Jeffery  
 Iverson Lyda Lair  
 Gordon Martin  
 Paul (& Meredith) Morse  
 Phyllis Archibald Morse  
 Gerald Pierce  
 Number in Class: 38  
 Number of Donors: 12  
 Participation: 32%  
 Dale Campbell  
 Maurice Fankhauser Chandler  
 Sandra Smith Dealy  
 Richard (& Valorie) Harrison  
 Damon Heinrich  
 Eugene (& Norma) McDonald  
 Richard Phillips  
 Jane Weber Willcuts  
 Robert Willcuts

Lois Houston Phillips  
 Stephen (& Ter) Ross  
 Number in Class: 40  
 Number of Donors: 13  
 Participation: 33%  
 Shirley Gurn Boerlin  
 Virginia Leach (& Dean) Freeman  
 Genevieve Mills (& Charles) Hall  
 John Lyda  
 Naomi Tuning Marsters  
 Doris Pearson Mech  
 Eugene Morse  
 Eugene Morse  
 Richard Mord Mott  
 Betty Walls Sargent  
 Herbert Sargent  
 Naomi Martin Wilson  
 Number in Class: 31  
 Number of Donors: 8  
 Participation: 25%  
 Alfreda Pinthor Batdorff  
 Leona Jeffery  
 Iverson Lyda Lair  
 Gordon Martin  
 Paul (& Meredith) Morse  
 Phyllis Archibald Morse  
 Gerald Pierce  
 Number in Class: 38  
 Number of Donors: 12  
 Participation: 32%  
 Dale Campbell  
 Maurice Fankhauser Chandler  
 Sandra Smith Dealy  
 Richard (& Valorie) Harrison  
 Damon Heinrich  
 Eugene (& Norma) McDonald  
 Richard Phillips  
 Jane Weber Willcuts  
 Robert Willcuts

Lois Houston Phillips  
 Stephen (& Ter) Ross  
 Number in Class: 40  
 Number of Donors: 13  
 Participation: 33%  
 Shirley Gurn Boerlin  
 Virginia Leach (& Dean) Freeman  
 Genevieve Mills (& Charles) Hall  
 John Lyda  
 Naomi Tuning Marsters  
 Doris Pearson Mech  
 Eugene Morse  
 Eugene Morse  
 Richard Mord Mott  
 Betty Walls Sargent  
 Herbert Sargent  
 Naomi Martin Wilson  
 Number in Class: 31  
 Number of Donors: 8  
 Participation: 25%  
 Alfreda Pinthor Batdorff  
 Leona Jeffery  
 Iverson Lyda Lair  
 Gordon Martin  
 Paul (& Meredith) Morse  
 Phyllis Archibald Morse  
 Gerald Pierce  
 Number in Class: 38  
 Number of Donors: 12  
 Participation: 32%  
 Dale Campbell  
 Maurice Fankhauser Chandler  
 Sandra Smith Dealy  
 Richard (& Valorie) Harrison  
 Damon Heinrich  
 Eugene (& Norma) McDonald  
 Richard Phillips  
 Jane Weber Willcuts  
 Robert Willcuts

Lois Houston Phillips  
 Stephen (& Ter) Ross  
 Number in Class: 40  
 Number of Donors: 13  
 Participation: 33%  
 Shirley Gurn Boerlin  
 Virginia Leach (& Dean) Freeman  
 Genevieve Mills (& Charles) Hall  
 John Lyda  
 Naomi Tuning Marsters  
 Doris Pearson Mech  
 Eugene Morse  
 Eugene Morse  
 Richard Mord Mott  
 Betty Walls Sargent  
 Herbert Sargent  
 Naomi Martin Wilson  
 Number in Class: 31  
 Number of Donors: 8  
 Participation: 25%  
 Alfreda Pinthor Batdorff  
 Leona Jeffery  
 Iverson Lyda Lair  
 Gordon Martin  
 Paul (& Meredith) Morse  
 Phyllis Archibald Morse  
 Gerald Pierce  
 Number in Class: 38  
 Number of Donors: 12  
 Participation: 32%  
 Dale Campbell  
 Maurice Fankhauser Chandler  
 Sandra Smith Dealy  
 Richard (& Valorie) Harrison  
 Damon Heinrich  
 Eugene (& Norma) McDonald  
 Richard Phillips  
 Jane Weber Willcuts  
 Robert Willcuts

Lois Houston Phillips  
 Stephen (& Ter) Ross  
 Number in Class: 40  
 Number of Donors: 13  
 Participation: 33%  
 Shirley Gurn Boerlin  
 Virginia Leach (& Dean) Freeman  
 Genevieve Mills (& Charles) Hall  
 John Lyda  
 Naomi Tuning Marsters  
 Doris Pearson Mech  
 Eugene Morse  
 Eugene Morse  
 Richard Mord Mott  
 Betty Walls Sargent  
 Herbert Sargent  
 Naomi Martin Wilson  
 Number in Class: 31  
 Number of Donors: 8  
 Participation: 25%  
 Alfreda Pinthor Batdorff  
 Leona Jeffery  
 Iverson Lyda Lair  
 Gordon Martin  
 Paul (& Meredith) Morse  
 Phyllis Archibald Morse  
 Gerald Pierce  
 Number in Class: 38  
 Number of Donors: 12  
 Participation: 32%  
 Dale Campbell  
 Maurice Fankhauser Chandler  
 Sandra Smith Dealy  
 Richard (& Valorie) Harrison  
 Damon Heinrich  
 Eugene (& Norma) McDonald  
 Richard Phillips  
 Jane Weber Willcuts  
 Robert Willcuts

Lois Houston Phillips  
 Stephen (& Ter) Ross  
 Number in Class: 40  
 Number of Donors: 13  
 Participation: 33%  
 Shirley Gurn Boerlin  
 Virginia Leach (& Dean) Freeman  
 Genevieve Mills (& Charles) Hall  
 John Lyda  
 Naomi Tuning Marsters  
 Doris Pearson Mech  
 Eugene Morse  
 Eugene Morse  
 Richard Mord Mott  
 Betty Walls Sargent  
 Herbert Sargent  
 Naomi Martin Wilson  
 Number in Class: 31  
 Number of Donors: 8  
 Participation: 25%  
 Alfreda Pinthor Batdorff  
 Leona Jeffery  
 Iverson Lyda Lair  
 Gordon Martin  
 Paul (& Meredith) Morse  
 Phyllis Archibald Morse  
 Gerald Pierce  
 Number in Class: 38  
 Number of Donors: 12  
 Participation: 32%  
 Dale Campbell  
 Maurice Fankhauser Chandler  
 Sandra Smith Dealy  
 Richard (& Valorie) Harrison  
 Damon Heinrich  
 Eugene (& Norma) McDonald  
 Richard Phillips

## ALUMNI (Continued)

Ronald Stansell  
H. Dean Thompson  
Sandra Neal Thompson  
Charlene Schlotmann Weber

### 1966

Number in Class: 87  
Number of Donors: 16  
Participation: 18%  
Donita Kendall Barnett  
Janice Kennon Beals  
Diane Ball Bradley  
Daniel Cammack  
Curtis Drahn  
Tom Farr  
Verla Hopper Holton  
Mary Kay Johnson  
Phyllis McCoy  
Nancy Nordyke Mylander  
Gae Martin Reck  
Carolyn Hampton Stansell  
Glen Stansell  
Sharon Moore Templeton  
Ken VandenHoek  
Edith Cammack White

### 1967

Number in Class: 85  
Number of Donors: 16  
Participation: 19%

Jon Bishop  
Marita Cammack Bishop  
Lucille Hughes Borsch  
Elaire Kunkel Cammack  
Sharon Ehler Clark  
Dean (& Ruth) Griffith  
Junita Astleford (& Allen)  
Mary Gallaway Kitt  
Victor (& Sheryl) Peterson  
Dale Rinard  
Kenneth Newlin Rinard  
C. Lawrence (& Rebecca) Roberts  
J. William Rourke  
Nancy Forsythe Thomas  
Kent Thornburg  
Judith Roberts Woolsey

### 1968

Number in Class: 85  
Number of Donors: 9  
Participation: 11%

Gary (& Paula) Black  
James Bradley  
Gary Brown  
Jeannette Brown  
Christine Cranmore  
Carol Helm Hughes  
Maury Macy  
Jeanne Gorthath Thornburg  
David Woolsey

### 1969

Number in Class: 106  
Number of Donors: 14  
Participation: 13%  
David (& Chris) Alteneider  
Dorian Bales  
Mike Boehme  
Gordon Crisman  
Juanita Roberts Eoff  
William Marks  
Donna Markoff (& John) Kreutz  
Jean Thomas Macy  
Phyllis Cole Masonheimer  
Paul Miller

## MEMORIAL GIFTS

### C. Edwin Kidd

Dale Adams  
Dane & Patricia Adrian  
Daniel & Evelyn Baker  
John D. Burton  
Harold & Sharon Clark  
Shirley Cooper  
Eugene Friends Church  
Muriel Harlan  
Theodore & Doris Hansen  
LaVerne Harris  
Harris Carpet Cleaners  
Michael & Dorothy Hawker  
Marion Heinig  
Ruth Hopf  
Barry Hubbell  
Katherine Huber  
Dale & Jeannie Hutchinson  
Russell & Patricia Johnson  
Charles & Sharon Kidd  
Grace Kidd  
David & Judy Kistler  
Lavonne Klotz  
Kit & Sharon Kroker  
Susan Madden  
Kathie McMurdo  
Linda Miller  
William & Margaret Mooseker  
Iva Nelson  
Newberg Graphical  
Alice Norton  
Julie Ann Olye  
Ontario First Baptist Church  
William & Shirley Riechers  
Alice Ross

Ronald (& Carolyn) Staples  
Harold Thomas  
Eunice Wombie Valentine  
Robert VanSlyke

### 1970

Number in Class: 87  
Number of Donors: 5  
Participation: 6%  
Byron Debban  
Gary Macy  
Margaret Astleford Macy  
Ernest Martin  
Marshall Spurling

### 1971

Number in Class: 113  
Number of Donors: 12  
Participation: 11%  
Stuart (& HaeJa) Crisman  
Eric Gwilym  
Stacy Roberts Hadley  
Andrey Roberts Herling  
Bruce Magee  
Kathleen Jensen Magee  
Randall (& Mary) Morse  
Eliene Brown Newman  
Beverly Knight (& Tom) Payton  
Stephen (& Brenda) Reynolds  
Harry Seaby  
Marvin Walker

### 1972

Number in Class: 99  
Number of Donors: 19  
Participation: 19%

Cleta Thornburg Crisman  
Connie Noel Dalke  
Terry Dalke  
Gale (& Rusti) Field  
Glenda House Gilroy  
Stephen Gilroy  
Corale Grover  
Lyle (& Alice) Herrick  
John (& Alice) Hill  
John Holton  
Linda Calkins Holton  
Gary Jackson  
Sharon Duntap Jackson  
Kenneth (& Linda) Johnson  
David Keiley  
Stan Morse  
Louise Strait Sperling  
Stuart (& Kathie) Willcuts

### 1973

Number in Class: 118  
Number of Donors: 17  
Participation: 14%  
Robert Bleitscher  
Carl Duhrkoop  
Don Farnham  
Peggy Stands Fowler  
Carol Holiday  
Betty Ball Howard  
Dorothy Brown Kluver  
Gordon (& Joan) Loewen  
John Macy  
Douglas McIntyre  
Dwight McIntyre  
Charita Hanson (& Jerry) Murphy  
Linda Nay  
Daniel (& Glenda) Pike  
David Robinson  
Roberta Zimmerman Rowe

### 1974

Number in Class: 125  
Number of Donors: 26  
Participation: 22%  
Suzanne Page Bleitscher  
Ron Boehr  
Don Bowden  
Linda Hill Boyd  
L. Aven Crisman  
Janice Leaman Duhrkoop  
Dorothy Erbo Fleming  
Rhonda Erbo Fleming  
Laurelyn Brown Hansch  
Ronald Hays  
James (& Pam) Jackson  
Douglas Johnson  
Allan Kirkendall  
Sharon Vickers Maloney  
Phyllis Roberts McKinney  
Ellen Perry Morse  
Dave Powell  
Robert Rowe  
Marjorie May (& Tom) Seller  
Craig Schaffner  
Paul Schaffner (& David) Temple  
Lana Thurston  
Ruth Hurdley Tipping  
Kathy Armstrong Watson  
Michael Wirta

### 1975

Number in Class: 184  
Number of Donors: 27  
Participation: 15%  
Tim Ankeny  
Jerry Barnick  
Benjamin Bauer  
Paul Bishop  
Beverly Ankeny Chapman  
Al Crackenbergh  
Steven (& Jana) Fine  
Richard Hampton  
John Harmon  
Esther Hopper  
Paul (& Debbie) Koch  
Robert Laughland  
David McMurdo  
Susan Brown McCurdy  
Julie Frost Mikhalo  
Karia Martin Minthorne  
Chad Neely  
Peter Nordin  
Craig Roberts  
Shelley Webster Rogers  
Wesley Rogers  
Deborah Domy Seibert  
Werner Seibert  
Terri Alexander Shaffer  
Jon Strutz  
Randy Ware

### 1976

Number in Class: 123  
Number of Donors: 18  
Participation: 15%  
Sandy Larabee Barnett  
Mary Kientz Boger  
Virginia Martin Bowden  
John & Tina Buck  
Paul Esch  
Steve (& Donice) Fellows  
David Hampton  
Sharon Pike Johnson  
Maria (& Wayne) Ludolph-Heikkala  
Dianna Carfall McIntyre  
Steve McKinney  
Bruce Moberly  
Deborah Sexton Powell  
Deborah LeShana Rickey  
Denise Mills (& Brad) Rickey  
Jeffrey Rickey  
Denise Field Robinson  
Roger Sargent

### 1977

Number in Class: 157  
Number of Donors: 29  
Participation: 18%  
Kristine Osburn Ankeny  
Rebecca Thomas Ankeny  
Susan Allen Ankeny  
Sharon Milhous Delano  
Kay Starkey Ellison  
Michael Evilly  
Walter Everly  
Diana Savarino Gulley  
Marcia (& David) Hadley-Clinger  
Phyllis Mardock Hampton  
Tim (& Judy) Hardie  
Robert Johnson  
Phyllis Mardock Kirkendall  
Nancy Minthorne Laughland  
David LeRud  
J. Clifton McCurdy  
Ronald Mock  
Roger Morris  
Kathleen Ohling  
Elaire Rhodes Poole  
Carol Puckett Schmidt  
David Schmidt  
Karen Bates Smith  
Philip Smith  
Carol Roth Thomas  
Dorothy Thomas  
Mark Vernon  
Robin Burroughs Weaver

### 1978

Number in Class: 130  
Number of Donors: 17  
Participation: 13%  
Scott Ankeny  
Jennifer Eichenberger Bacon  
Jeannette Myers Bineham  
Carrie Lamm Bishop  
Linda Byrd  
David Delano  
Jeanne Clark Korver  
Richard Korver  
David (& Becky) LeShana  
Wayne Lindsey  
Karin Schneider Michaelson  
Kimberly Huisenga Perisho  
Londa Beebe Rochholz  
Mary Scott  
David Scott  
Deanna Jimenez Theiss  
Thomas VanWinkle  
Number in Class: 182  
Number of Donors: 16  
Participation: 9%  
Brian Aitken  
Robert Baugh  
Rosalie Gooding Baugh  
David Breikreuz  
Kelley Duncan (& William) Brewster  
Sandra Chamberlin  
Gary Friesen  
Rachel Hampton  
Jewell Larson Harmon  
Linda Roberts Hart  
Shirley Kienkietel  
David (& Becky) Miller  
David Moberly  
Allison Campbell Scott  
Denise Monroe (& Ted) Thorne  
Debby Cuerden (& Jim) Zahler  
Number in Class: 165  
Number of Donors: 12  
Participation: 8%  
Daniel Cammack  
Laurel Nordyke Friesen  
Danielle Gilbertson  
William (& Mary) Green  
Betty Heininge  
Linda Miller  
Dennis Miller  
Stephan Perisho  
Eric Smith  
Number in Class: 201  
Number of Donors: 24  
Participation: 12%  
Dave (& Patricia) Adrian  
Sally Andrews  
Tammy Rose Barnick  
LeAnn Nash Beebe  
Jeff Bineham  
Janice Cammack  
Joanne Roberts Fuller  
Deborah Stephens Helling  
Lesta Perisho Johnson  
Stephan Johnson  
Gregg Lamm  
Ruth Anderson  
Theodore Armstrong  
Esther Armstrong  
Vernon & Beth Bagley  
Ray Barnes  
Ron & Grace Barnick  
Dorothy Dreyer Billington  
James Bishop  
Gary & Paula Black  
Dorothy Bonham  
Sanford & Bernice Brown  
Ray & Verna Buckley  
Nellie Burd  
Paul & Phyllis Cammack  
Ruth Carter  
Maurice & Eloise Chandler  
Donald & Donna Chittick  
Cheryl Fraser Clark  
Jean Clark  
Martha Jane Cole  
Frank & Genevieve Cole  
Frieda Compton  
Geraldine Custer  
John & Marcella Dart  
Minerva Davis  
Jack Day  
Stephen Day  
Alice Dixon  
Brock & Margaret Dixon  
Basil & Virginia Dmytryshyn  
Anna Dozier  
William Dreyer  
Kenneth & Geneva  
Eichenberger  
Richard & Kathryn  
Eichenberger  
Isabelle Emry  
Alice Evans  
Ted & Doris Feenstra  
Frank & Stella Fink  
Lowell & Evangelyn Fleetwood  
Carol Fraser  
Anne Gagnebin  
Mary Gagnette  
Mary Goffrier  
James & Ruth Goodwin  
Estelle Grade  
Number in Class: 231  
Number of Donors: 20  
Participation: 9%  
Kenneth Beebe  
Karen Worthington Curtis  
Mary Curtis  
Bonnie Johnson Hampton  
Larry Hampton



### 1983

Number in Class: 166  
Number of Donors: 13  
Participation: 8%  
Angela Dunn Reitmunn  
C. Todd Reitmunn  
Julie Simpson  
Dorothy Staples  
Jeffrey VandenHoek  
Number in Class: 160  
Number of Donors: 6  
Participation: 4%  
Pamela Hagen Beebe  
Deborah Jayne Doolin  
Ronald Doolin  
Number in Class: 207  
Number of Donors: 18  
Participation: 9%  
Heidi Gordon Bail  
Marama Magee Cammack  
Shawna Chantler  
K. Gene (& Michele) Christian  
Ken Hickenlooper  
James Kries Huber  
James Kries  
Sharon Schulz Kroker  
Vicki Baugh (& Bernie) McBride  
Susan McGuire  
Mardi Sarjent  
Dawan Saylor Simonis  
Matthew Simonis  
Mari Kay Evans Smith  
Miriam Clark Staples  
Shelley-Erickson Tompt  
Denise Iverson Vernon  
Kathy Winters  
Number in Class: 246  
Number of Donors: 9  
Participation: 4%  
Stephanie Ceiley  
Randall Comfort  
Candy (& Ron) Giebenhain  
Rob Gordon  
Robyn Simpson Himdmarsch  
Carol Jackson  
Sylvia MacWilliams  
D. Kay Bruch Neumann  
Leon Strait  
Number in Class: 308  
Number of Donors: 13  
Participation: 4%  
David Bower  
Linda Cherry  
Susan Crisman  
Susan Emra  
Susan Falmore  
Ralph Fough  
Brian Gardner  
Phyllis Martin Hays  
Judith Welter Miller  
Louise Rogge  
Jeff Stanfield  
Steven Sundet  
Donna West  
Number in Class: 234  
Number of Donors: 11  
Participation: 5%  
Laura Engle  
Loree Hawken  
Eric Hlad  
Lizette Workman King  
Kit Kroker  
Shannon Lindsay  
Jeff Richards  
Myrielle Rourke  
Michelle Sackman  
Jonathan Umfreet  
Merie & Theima Green  
Corlida Grover  
Kendall & D. Corlida Grover  
May Hadley  
George & Maxine Haehlen  
Lewis & Irene Haisch  
Doris Hampton  
Ruthanna Hampton  
Charles & Jean Hanson  
Esther Hays  
Virginia Helm  
Marilyn Henderson  
Olive Hester  
Herbert & Margaret Hidley  
Marie Higgins  
Rachel Hinshaw  
Harold & Delight Hoffman  
Bonnie Hollinshead  
Helen Hoskins  
Margaret Huber  
Richard & Laurel Jensen  
Roy & Cheryl Johnson  
Sue Johnson  
J. P. & Lulu Johnson  
Clifford & Myrna Jordan  
George Keagle  
Beverly Keisling  
Esther M. Klages  
Phyllis Koch  
Harold & Connie Larson  
Dorothy LeFevre  
Curt & Sharon Lemmons  
William & Catherine Loewen  
Chestler & Opal Long  
George Ludwig  
Margaret Ludwig  
Milton & Rachel Lutz  
Wayne & Eliene Mack  
Seth & Elizabeth Maine  
Herbert Martin  
Orthy & Edna May  
Edgar McDowell  
Paul & Patsy Miller  
Zella Miller  
Charlotte Mills  
Fern Mills  
Larry & Vicki Mills  
Paul & Wilma Mills  
Wendell & Dorthalene Mills  
Elizabeth Carey Minas  
Robert & Leila Morrill  
James & Doris Morris  
Dorothy Morse

### 1985

Number in Class: 207  
Number of Donors: 18  
Participation: 9%  
Heidi Gordon Bail  
Marama Magee Cammack  
Shawna Chantler  
K. Gene (& Michele) Christian  
Ken Hickenlooper  
James Kries Huber  
James Kries  
Sharon Schulz Kroker  
Vicki Baugh (& Bernie) McBride  
Susan McGuire  
Mardi Sarjent  
Dawan Saylor Simonis  
Matthew Simonis  
Mari Kay Evans Smith  
Miriam Clark Staples  
Shelley-Erickson Tompt  
Denise Iverson Vernon  
Kathy Winters  
Number in Class: 166  
Number of Donors: 13  
Participation: 8%  
Angela Dunn Reitmunn  
C. Todd Reitmunn  
Julie Simpson  
Dorothy Staples  
Jeffrey VandenHoek  
Number in Class: 160  
Number of Donors: 6  
Participation: 4%  
Pamela Hagen Beebe  
Deborah Jayne Doolin  
Ronald Doolin  
Number in Class: 207  
Number of Donors: 18  
Participation: 9%  
Heidi Gordon Bail  
Marama Magee Cammack  
Shawna Chantler  
K. Gene (& Michele) Christian  
Ken Hickenlooper  
James Kries Huber  
James Kries  
Sharon Schulz Kroker  
Vicki Baugh (& Bernie) McBride  
Susan McGuire  
Mardi Sarjent  
Dawan Saylor Simonis  
Matthew Simonis  
Mari Kay Evans Smith  
Miriam Clark Staples  
Shelley-Erickson Tompt  
Denise Iverson Vernon  
Kathy Winters  
Number in Class: 246  
Number of Donors: 9  
Participation: 4%  
Stephanie Ceiley  
Randall Comfort  
Candy (& Ron) Giebenhain  
Rob Gordon  
Robyn Simpson Himdmarsch  
Carol Jackson  
Sylvia MacWilliams  
D. Kay Bruch Neumann  
Leon Strait  
Number in Class: 308  
Number of Donors: 13  
Participation: 4%  
David Bower  
Linda Cherry  
Susan Crisman  
Susan Emra  
Susan Falmore  
Ralph Fough  
Brian Gardner  
Phyllis Martin Hays  
Judith Welter Miller  
Louise Rogge  
Jeff Stanfield  
Steven Sundet  
Donna West  
Number in Class: 234  
Number of Donors: 11  
Participation: 5%  
Laura Engle  
Loree Hawken  
Eric Hlad  
Lizette Workman King  
Kit Kroker  
Shannon Lindsay  
Jeff Richards  
Myrielle Rourke  
Michelle Sackman  
Jonathan Umfreet  
Merie & Theima Green  
Corlida Grover  
Kendall & D. Corlida Grover  
May Hadley  
George & Maxine Haehlen  
Lewis & Irene Haisch  
Doris Hampton  
Ruthanna Hampton  
Charles & Jean Hanson  
Esther Hays  
Virginia Helm  
Marilyn Henderson  
Olive Hester  
Herbert & Margaret Hidley  
Marie Higgins  
Rachel Hinshaw  
Harold & Delight Hoffman  
Bonnie Hollinshead  
Helen Hoskins  
Margaret Huber  
Richard & Laurel Jensen  
Roy & Cheryl Johnson  
Sue Johnson  
J. P. & Lulu Johnson  
Clifford & Myrna Jordan  
George Keagle  
Beverly Keisling  
Esther M. Klages  
Phyllis Koch  
Harold & Connie Larson  
Dorothy LeFevre  
Curt & Sharon Lemmons  
William & Catherine Loewen  
Chestler & Opal Long  
George Ludwig  
Margaret Ludwig  
Milton & Rachel Lutz  
Wayne & Eliene Mack  
Seth & Elizabeth Maine  
Herbert Martin  
Orthy & Edna May  
Edgar McDowell  
Paul & Patsy Miller  
Zella Miller  
Charlotte Mills  
Fern Mills  
Larry & Vicki Mills  
Paul & Wilma Mills  
Wendell & Dorthalene Mills  
Elizabeth Carey Minas  
Robert & Leila Morrill  
James & Doris Morris  
Dorothy Morse

### 1986

Number in Class: 166  
Number of Donors: 13  
Participation: 8%  
Angela Dunn Reitmunn  
C. Todd Reitmunn  
Julie Simpson  
Dorothy Staples  
Jeffrey VandenHoek  
Number in Class: 160  
Number of Donors: 6  
Participation: 4%  
Pamela Hagen Beebe  
Deborah Jayne Doolin  
Ronald Doolin  
Number in Class: 207  
Number of Donors: 18  
Participation: 9%  
Heidi Gordon Bail  
Marama Magee Cammack  
Shawna Chantler  
K. Gene (& Michele) Christian  
Ken Hickenlooper  
James Kries Huber  
James Kries  
Sharon Schulz Kroker  
Vicki Baugh (& Bernie) McBride  
Susan McGuire  
Mardi Sarjent  
Dawan Saylor Simonis  
Matthew Simonis  
Mari Kay Evans Smith  
Miriam Clark Staples  
Shelley-Erickson Tompt  
Denise Iverson Vernon  
Kathy Winters  
Number in Class: 246  
Number of Donors: 9  
Participation: 4%  
Stephanie Ceiley  
Randall Comfort  
Candy (& Ron) Giebenhain  
Rob Gordon  
Robyn Simpson Himdmarsch  
Carol Jackson  
Sylvia MacWilliams  
D. Kay Bruch Neumann  
Leon Strait  
Number in Class: 308  
Number of Donors: 13  
Participation: 4%  
David Bower  
Linda Cherry  
Susan Crisman  
Susan Emra  
Susan Falmore  
Ralph Fough  
Brian Gardner  
Phyllis Martin Hays  
Judith Welter Miller  
Louise Rogge  
Jeff Stanfield  
Steven Sundet  
Donna West  
Number in Class: 234  
Number of Donors: 11  
Participation: 5%  
Laura Engle  
Loree Hawken  
Eric Hlad  
Lizette Workman King  
Kit Kroker  
Shannon Lindsay  
Jeff Richards  
Myrielle Rourke  
Michelle Sackman  
Jonathan Umfreet  
Merie & Theima Green  
Corlida Grover  
Kendall & D. Corlida Grover  
May Hadley  
George & Maxine Haehlen  
Lewis & Irene Haisch  
Doris Hampton  
Ruthanna Hampton  
Charles & Jean Hanson  
Esther Hays  
Virginia Helm  
Marilyn Henderson  
Olive Hester  
Herbert & Margaret Hidley  
Marie Higgins  
Rachel Hinshaw  
Harold & Delight Hoffman  
Bonnie Hollinshead  
Helen Hoskins  
Margaret Huber  
Richard & Laurel Jensen  
Roy & Cheryl Johnson  
Sue Johnson  
J. P. & Lulu Johnson  
Clifford & Myrna Jordan  
George Keagle  
Beverly Keisling  
Esther M. Klages  
Phyllis Koch  
Harold & Connie Larson  
Dorothy LeFevre  
Curt & Sharon Lemmons  
William & Catherine Loewen  
Chestler & Opal Long  
George Ludwig  
Margaret Ludwig  
Milton & Rachel Lutz  
Wayne & Eliene Mack  
Seth & Elizabeth Maine  
Herbert Martin  
Orthy & Edna May  
Edgar McDowell  
Paul & Patsy Miller  
Zella Miller  
Charlotte Mills  
Fern Mills  
Larry & Vicki Mills  
Paul & Wilma Mills  
Wendell & Dorthalene Mills  
Elizabeth Carey Minas  
Robert & Leila Morrill  
James & Doris Morris  
Dorothy Morse

### 1987

Number in Class: 166  
Number of Donors: 13  
Participation: 8%  
Angela Dunn Reitmunn  
C. Todd Reitmunn  
Julie Simpson  
Dorothy Staples  
Jeffrey VandenHoek  
Number in Class: 160  
Number of Donors: 6  
Participation: 4%  
Pamela Hagen Beebe  
Deborah Jayne Doolin  
Ronald Doolin  
Number in Class: 207  
Number of Donors: 18  
Participation: 9%  
Heidi Gordon Bail  
Marama Magee Cammack  
Shawna Chantler  
K. Gene (& Michele) Christian  
Ken Hickenlooper  
James Kries Huber  
James Kries  
Sharon Schulz Kroker  
Vicki Baugh (& Bernie) McBride  
Susan McGuire  
Mardi Sarjent  
Dawan Saylor Simonis  
Matthew Simonis  
Mari Kay Evans Smith  
Miriam Clark Staples  
Shelley-Erickson Tompt  
Denise Iverson Vernon  
Kathy Winters  
Number in Class: 246  
Number of Donors: 9  
Participation: 4%  
Stephanie Ceiley  
Randall Comfort  
Candy (& Ron) Giebenhain  
Rob Gordon  
Robyn Simpson Himdmarsch  
Carol Jackson  
Sylvia MacWilliams  
D. Kay Bruch Neumann  
Leon Strait  
Number in Class: 308  
Number of Donors: 13  
Participation: 4%  
David Bower  
Linda Cherry  
Susan Crisman  
Susan Emra  
Susan Falmore  
Ralph Fough  
Brian Gardner  
Phyllis Martin Hays  
Judith Welter Miller  
Louise Rogge  
Jeff Stanfield  
Steven Sundet  
Donna West  
Number in Class: 234  
Number of Donors: 11  
Participation: 5%  
Laura Engle  
Loree Hawken  
Eric Hlad  
Lizette Workman King  
Kit Kroker  
Shannon Lindsay  
Jeff Richards  
Myrielle Rourke  
Michelle Sackman  
Jonathan Umfreet  
Merie & Theima Green  
Corlida Grover  
Kendall & D. Corlida Grover  
May Hadley  
George & Maxine Haehlen  
Lewis & Irene Haisch  
Doris Hampton  
Ruthanna Hampton  
Charles & Jean Hanson  
Esther Hays  
Virginia Helm  
Marilyn Henderson  
Olive Hester  
Herbert & Margaret Hidley  
Marie Higgins  
Rachel Hinshaw  
Harold & Delight Hoffman  
Bonnie Hollinshead  
Helen Hoskins  
Margaret Huber  
Richard & Laurel Jensen  
Roy & Cheryl Johnson  
Sue Johnson  
J. P. & Lulu Johnson  
Clifford & Myrna Jordan  
George Keagle  
Beverly Keisling  
Esther M. Klages  
Phyllis Koch  
Harold & Connie Larson  
Dorothy LeFevre  
Curt & Sharon Lemmons  
William & Catherine Loewen  
Chestler & Opal Long  
George Ludwig  
Margaret Ludwig  
Milton & Rachel Lutz  
Wayne & Eliene Mack  
Seth & Elizabeth Maine  
Herbert Martin  
Orthy & Edna May  
Edgar McDowell  
Paul & Patsy Miller  
Zella Miller  
Charlotte Mills  
Fern Mills  
Larry & Vicki Mills  
Paul & Wilma Mills  
Wendell & Dorthalene Mills  
Elizabeth Carey Minas  
Robert & Leila Morrill  
James & Doris Morris  
Dorothy Morse

### 1988

Number in Class: 246  
Number of Donors: 9  
Participation: 4%  
Stephanie Ceiley  
Randall Comfort  
Candy (& Ron) Giebenhain  
Rob Gordon  
Robyn Simpson Himdmarsch  
Carol Jackson  
Sylvia MacWilliams  
D. Kay Bruch Neumann  
Leon Strait  
Number in Class: 308  
Number of Donors: 13  
Participation: 4%  
David Bower  
Linda Cherry  
Susan Crisman  
Susan Emra  
Susan Falmore  
Ralph Fough  
Brian Gardner  
Phyllis Martin Hays  
Judith Welter Miller  
Louise Rogge  
Jeff Stanfield  
Steven Sundet  
Donna West  
Number in Class: 234  
Number of Donors: 11  
Participation: 5%  
Laura Engle  
Loree Hawken  
Eric Hlad  
Lizette Workman King  
Kit Kroker  
Shannon Lindsay  
Jeff Richards  
Myrielle Rourke  
Michelle Sackman  
Jonathan Umfreet  
Merie & Theima Green  
Corlida Grover  
Kendall & D. Corlida Grover  
May Hadley  
George & Maxine Haehlen  
Lewis & Irene Haisch  
Doris Hampton  
Ruthanna Hampton  
Charles & Jean Hanson  
Esther Hays  
Virginia Helm  
Marilyn Henderson  
Olive Hester  
Herbert & Margaret Hidley  
Marie Higgins  
Rachel Hinshaw  
Harold & Delight Hoffman  
Bonnie Hollinshead  
Helen Hoskins  
Margaret Huber  
Richard & Laurel Jensen  
Roy & Cheryl Johnson  
Sue Johnson  
J. P. & Lulu Johnson  
Clifford & Myrna Jordan  
George Keagle  
Beverly Keisling  
Esther M. Klages  
Phyllis Koch  
Harold & Connie Larson  
Dorothy LeFevre  
Curt & Sharon Lemmons  
William & Catherine Loewen  
Chestler & Opal Long  
George Ludwig  
Margaret Ludwig  
Milton & Rachel Lutz  
Wayne & Eliene Mack  
Seth & Elizabeth Maine  
Herbert Martin  
Orthy & Edna May  
Edgar McDowell  
Paul & Patsy Miller  
Zella Miller  
Charlotte Mills  
Fern Mills  
Larry & Vicki Mills  
Paul & Wilma Mills  
Wendell & Dorthalene Mills  
Elizabeth Carey Minas  
Robert & Leila Morrill  
James & Doris Morris  
Dorothy Morse

## ANNUITANTS

Pearl Adams  
Leona Abischer  
Amanda Anderson  
J. William Anderson  
James Anderson  
Ruth Anderson  
Rudolph Anderson  
Theodore Armstrong  
Esther Armstrong  
Vernon & Beth Bagley  
Ray Barnes  
Ron & Grace Barnick  
Dorothy Dreyer Billington  
Dorothy Dreyer Billington  
James Bishop  
Gary & Paula Black  
Dorothy Bonham  
Sanford & Bernice Brown  
Ray & Verna Buckley  
Nellie Burd  
Paul & Phyllis Cammack  
Ruth Carter  
Maurice & Eloise Chandler  
Donald & Donna Chittick  
Cheryl Fraser Clark  
Jean Clark  
Martha Jane Cole  
Frank & Genevieve Cole  
Frieda Compton  
Geraldine Custer  
John & Marcella Dart  
Minerva Davis  
Jack Day  
Stephen Day  
Alice Dixon  
Brock & Margaret Dixon  
Basil & Virginia Dmytryshyn  
Anna Dozier  
William Dreyer  
Kenneth & Geneva  
Eichenberger  
Richard & Kathryn  
Eichenberger  
Isabelle Emry  
Alice Evans  
Ted & Doris Feenstra  
Frank & Stella Fink  
Lowell & Evangelyn Fleetwood  
Carol Fraser  
Anne Gagnebin  
Mary Gagnette  
Mary Goffrier  
James & Ruth Goodwin  
Estelle Grade  
Number in Class: 157  
Number of Donors: 29  
Participation: 18%  
Kristine Osburn Ankeny  
Rebecca Thomas Ankeny  
Susan Allen Ankeny  
Sharon Milhous Delano  
Kay Starkey Ellison  
Michael Evilly  
Walter Everly  
Diana Savarino Gulley  
Marcia (& David) Hadley-Clinger  
Phyllis Mardock Hampton  
Tim (& Judy) Hardie  
Robert Johnson  
Phyllis Mardock Kirkendall  
Nancy Minthorne Laughland  
David LeRud  
J. Clifton McCurdy  
Ronald Mock  
Roger Morris  
Kathleen Ohling  
Elaire Rhodes Poole  
Carol Puckett Schmidt  
David Schmidt  
Karen Bates Smith  
Philip Smith  
Carol Roth Thomas  
Dorothy Thomas  
Mark Vernon  
Robin Burroughs Weaver  
Number in Class: 130  
Number of Donors: 17  
Participation: 13%  
Scott Ankeny  
Jennifer Eichenberger Bacon  
Jeannette Myers Bineham  
Carrie Lamm Bishop  
Linda Byrd  
David Delano  
Jeanne Clark Korver  
Richard Korver  
David (& Becky) LeShana  
Wayne Lindsey  
Karin Schneider Michaelson  
Kimberly Huisenga Perisho  
Londa Beebe Rochholz  
Mary Scott  
David Scott  
Deanna Jimenez Theiss  
Thomas VanWinkle  
Number in Class: 182  
Number of Donors: 16  
Participation: 9%  
Brian Aitken  
Robert Baugh  
Rosalie Gooding Baugh  
David Breikreuz  
Kelley Duncan (& William) Brewster  
Sandra Chamberlin  
Gary Friesen  
Rachel Hampton  
Jewell Larson Harmon  
Linda Roberts Hart  
Shirley Kienkietel  
David (& Becky) Miller  
David Moberly  
Allison Campbell Scott  
Denise Monroe (& Ted) Thorne  
Debby Cuerden (& Jim) Zahler  
Number in Class: 165  
Number of Donors: 12  
Participation: 8%  
Daniel Cammack  
Laurel Nordyke Friesen  
Danielle Gilbertson  
William (& Mary) Green  
Betty Heininge  
Linda Miller  
Dennis Miller  
Stephan Perisho  
Eric Smith  
Number in Class: 201  
Number of Donors: 24  
Participation: 12%  
Dave (& Patricia) Adrian  
Sally Andrews  
Tammy Rose Barnick  
LeAnn Nash Beebe  
Jeff Bineham  
Janice Cammack  
Joanne Roberts Fuller  
Deborah Stephens Helling  
Lesta Perisho Johnson  
Stephan Johnson  
Gregg Lamm  
Ruth Anderson  
Theodore Armstrong  
Esther Armstrong  
Vernon & Beth Bagley  
Ray Barnes  
Ron & Grace Barnick  
Dorothy Dreyer Billington  
James Bishop  
Gary & Paula Black  
Dorothy Bonham  
Sanford & Bernice Brown  
Ray & Verna Buckley  
Nellie Burd  
Paul & Phyllis Cammack  
Ruth Carter  
Maurice & Eloise Chandler  
Donald & Donna Chittick  
Cheryl Fraser Clark  
Jean Clark  
Martha Jane Cole  
Frank & Genevieve Cole  
Frieda Compton  
Geraldine Custer  
John & Marcella Dart  
Minerva Davis  
Jack Day  
Stephen Day  
Alice Dixon  
Brock & Margaret Dixon  
Basil & Virginia Dmytryshyn  
Anna Dozier  
William Dreyer  
Kenneth & Geneva  
Eichenberger  
Richard & Kathryn  
Eichenberger  
Isabelle Emry  
Alice Evans  
Ted & Doris Feenstra  
Frank & Stella Fink  
Lowell & Evangelyn Fleetwood  
Carol Fraser  
Anne Gagnebin  
Mary Gagnette  
Mary Goffrier  
James & Ruth Goodwin  
Estelle Grade  
Number in Class: 231  
Number of Donors: 20  
Participation: 9%  
Kenneth Beebe  
Karen Worthington Curtis  
Mary Curtis  
Bonnie Johnson Hampton  
Larry Hampton

### 1989

Number in Class: 308  
Number of Donors: 13  
Participation: 4%  
David Bower  
Linda Cherry  
Susan Crisman  
Susan Emra  
Susan Falmore  
Ralph Fough  
Brian Gardner  
Phyllis Martin Hays  
Judith Welter Miller  
Louise Rogge  
Jeff Stanfield  
Steven Sundet  
Donna West  
Number in Class: 234  
Number of Donors: 11  
Participation: 5%  
Laura Engle  
Loree Hawken  
Eric Hlad  
Lizette Workman King  
Kit Kroker  
Shannon Lindsay  
Jeff Richards  
Myrielle Rourke  
Michelle Sackman  
Jonathan Umfreet  
Merie & Theima Green  
Corlida Grover  
Kendall & D. Corlida Grover  
May Hadley  
George & Maxine Haehlen  
Lewis & Irene Haisch  
Doris Hampton  
Ruthanna Hampton  
Charles & Jean Hanson  
Esther Hays  
Virginia Helm  
Marilyn Henderson  
Olive Hester  
Herbert & Margaret Hidley  
Marie Higgins  
Rachel Hinshaw  
Harold & Delight Hoffman  
Bonnie Hollinshead  
Helen Hoskins  
Margaret Huber  
Richard & Laurel Jensen  
Roy & Cheryl Johnson  
Sue Johnson  
J. P. & Lulu Johnson  
Clifford & Myrna Jordan  
George Keagle  
Beverly Keisling  
Esther M. Klages  
Phyllis Koch  
Harold & Connie Larson  
Dorothy LeFevre  
Curt & Sharon Lemmons  
William & Catherine Loewen  
Chestler & Opal Long  
George Ludwig  
Margaret Ludwig  
Milton & Rachel Lutz  
Wayne & Eliene Mack  
Seth & Elizabeth Maine  
Herbert Martin  
Orthy & Edna May  
Edgar McDowell  
Paul & Patsy Miller  
Zella Miller  
Charlotte Mills  
Fern Mills  
Larry & Vicki Mills  
Paul & Wilma Mills  
Wendell & Dorthalene Mills  
Elizabeth Carey Minas  
Robert & Leila Morrill  
James & Doris Morris  
Dorothy Morse

### 1990

Number in Class: 234  
Number of Donors: 11  
Participation: 5%  
Laura Engle  
Loree Hawken  
Eric Hlad  
Lizette Workman King  
Kit Kroker  
Shannon Lindsay  
Jeff Richards  
Myrielle Rourke  
Michelle Sackman  
Jonathan Umfreet  
Merie & Theima Green  
Corlida Grover  
Kendall & D. Corlida Grover  
May Hadley  
George & Maxine Haehlen  
Lewis & Irene Haisch  
Doris Hampton  
Ruthanna Hampton  
Charles & Jean Hanson  
Esther Hays  
Virginia Helm  
Marilyn Henderson  
Olive Hester  
Herbert & Margaret Hidley  
Marie Higgins  
Rachel Hinshaw  
Harold & Delight Hoffman  
Bonnie Hollinshead  
Helen Hoskins  
Margaret Huber  
Richard & Laurel Jensen  
Roy & Cheryl Johnson  
Sue Johnson  
J. P. & Lulu Johnson  
Clifford & Myrna Jordan  
George Keagle  
Beverly Keisling  
Esther M. Klages  
Phyllis Koch  
Harold & Connie Larson  
Dorothy LeFevre  
Curt & Sharon Lemmons  
William & Catherine Loewen  
Chestler & Opal Long  
George Ludwig  
Margaret Ludwig  
Milton & Rachel Lutz  
Wayne & Eliene Mack  
Seth & Elizabeth Maine  
Herbert Martin  
Orthy & Edna May  
Edgar McDowell  
Paul & Patsy Miller  
Zella Miller  
Charlotte Mills  
Fern Mills  
Larry & Vicki Mills  
Paul & Wilma Mills  
Wendell & Dorthalene Mills  
Elizabeth Carey Minas  
Robert & Leila Morrill  
James & Doris Morris  
Dorothy Morse

### 1991

Number in Class: 234  
Number

# FACULTY NEWS

## Ten Join George Fox College Faculty

Ten new full-time faculty members have joined George Fox College with the start of the 1991-92 school year.

Mark Ankeny is the College's new assistant professor in its Management of Human Resources program. A 1975 graduate of GFC, he attended the University of Oregon and received a master's degree in educational administration from Portland State University. An adjunct faculty member for the MHR program for the past two years, he previously taught fifth and sixth grades for Yamhill Grade School District #16.

Janice Cammack is GFC's new associate professor of chemistry. A 1980 graduate of George Fox College, Cammack earned her Ph.D. in organic chemistry from Oregon State University. She then taught at Augustana College in Sioux Falls, S.D., at Wheaton College in Wheaton, Ill., and at Pacific College in Forest Grove, Ore., before returning to her alma mater.

Clark Campbell, GFC's new assistant professor of psychology, is a graduate of Wheaton College who earned both an M.A. and Ph.D. in clinical psychology from Western Baptist Seminary in Portland, Ore. He was a clinical psychologist at Damasch State Hospital in Wilsonville, Ore., for two years, and since 1984, he has been in private practice.

Eugene Dykema is professor of business with half-time responsibility in administration. A member of the Economic and Business Department of Calvin College in Grand Rapids, Mich., since 1973, he served as the department's chairman for the past six years. He has a business background as a senior associate with Technomic Research Associates, where he was a management

consultant to Fortune 500 companies and government agencies. Dykema earned an M.B.A. from the University of Chicago and Ph.D. in economics from the University of Notre Dame.

Michelle Dykstra is GFC's new instructor of psychology. She comes to GFC from Fuller Theological Seminary's School of Psychology in Pasadena, Calif., where she earned her master's degree in psychology and is currently at the dissertation stage of her doctorate. In addition to serving as a teaching assistant at Fuller, she completed an internship with the seminary's Psychological Center. Other experience includes a pre-internship with Pasadena Community Counseling Center and practicums with Catholic Social Services and The Church Network.

Anne Frohlich is GFC's new head of technical services for the Murdock Learning Resource Center. A graduate of the University of Denver, she received a master of religious education degree from Fuller Theological Seminary and a master of arts in library science degree from Rosary College in River Forest, Ill. Frohlich brings to GFC 18 years of experience, having previously worked for William Tyndale College in Farmington Hills, Mich., and Reformed Presbyterian Theological Seminary in Philadelphia, Pa.

Dennis Ingolfsland is also new to the Murdock Learning Resource Center as its reference librarian. He comes to GFC from Arizona College of the Bible in Phoenix, where he was the library director. He also worked as a library assistant at the Daniel Boone Regional Library in Columbia, Mo., and at Calvary Bible College in Kansas City, Mo. He holds master's degrees in library science from the University of Missouri and theological studies from Fuller Theological Seminary.

Larry Kading is the new director of GFC's Video Communication Center. He earned his bachelor of arts degree from George Fox College in 1987 as the Communication Department's "Graduate of the Year." In the years since his graduation, he was a videographer for Princess Cruise Lines based in Santa Monica, Calif., and the videotape engineer for KFTY Channel 50 in Santa Rosa, Calif.

Glenn Moran returns to George Fox College as professor of education and chairman of the Division of Teacher Education. From 1979 to 1986, he was an associate professor of education at GFC, the final year also serving as the director of teacher education. He left George Fox to become principal for the West Linn (Ore.) School District's Wilsonville Primary School, and since 1990 he had served as the district's personnel director. His educational background includes a bachelor of science degree from Colorado State University, a master of arts degree from the University of Colorado, and a doctor of education degree from the University of Northern Colorado.

Susan Shaw is GFC's new assistant professor of Christian ministries. Originally from Georgia, she comes to GFC from California Baptist College in Riverside, where she was an assistant professor of religion since 1987, and Golden Gate Baptist Theological Seminary in Brea, Calif., where she was an adjunct professor of religious education. Shaw did her undergraduate work at Berry College in Rome, Ga., and earned both an M.A. and Ed.D. in Christian education from Southern Baptist Theological Seminary in Louisville, Ky.

## Bufford Elected To Leadership Of Association

Rodger K. Bufford, Ph.D., professor of psychology and director of the Graduate School of Clinical Psychology at George Fox College, has been named president elect of the western regional division of the Christian Association for Psychological Studies (CAPS).

The announcement was made at the association's annual convention, held in Anaheim, Calif., in June. The three-year term involves serving as president elect of CAPS West during 1991-92, as president in 1992-93, and as past president in 1993-94.

Also during the convention, Bufford presented a paper on "Spiritual Wellbeing and Interpersonal Behavior" and chaired a discussion session on "Integration: State of the Art for the '90s."

Bufford has headed the clinical psychology program since 1982. He practices as a clinical psychologist at Western Psychological and Counseling Services Center in Tualatin, Ore., and is a member of the Allied Health Care staff at Portland Adventist Medical Center.

Previously, he taught in the Psychological Studies Institute/Georgia State University, chaired the psychology department at Huntington College in Huntington, Ind., and taught at American University in Washington, D.C.

He holds both a master's and a doctoral degree in clinical psychology from the University of Illinois.

## George Fox College Professor Used as Expert During Gulf War

Ralph Beebe's "Blessed Are the Peacemakers" has been named "Book of the Year" by Choice Books, an international book distributor. Beebe, George Fox College professor of history, will travel to Kansas in November to receive the award.

"Blessed Are the Peacemakers" was originally published by Zondervan Publishing House in August 1990 and is being republished in England by Eagle Publishers. It tells the life story of a Christian Palestinian named Audeh Rantisi.

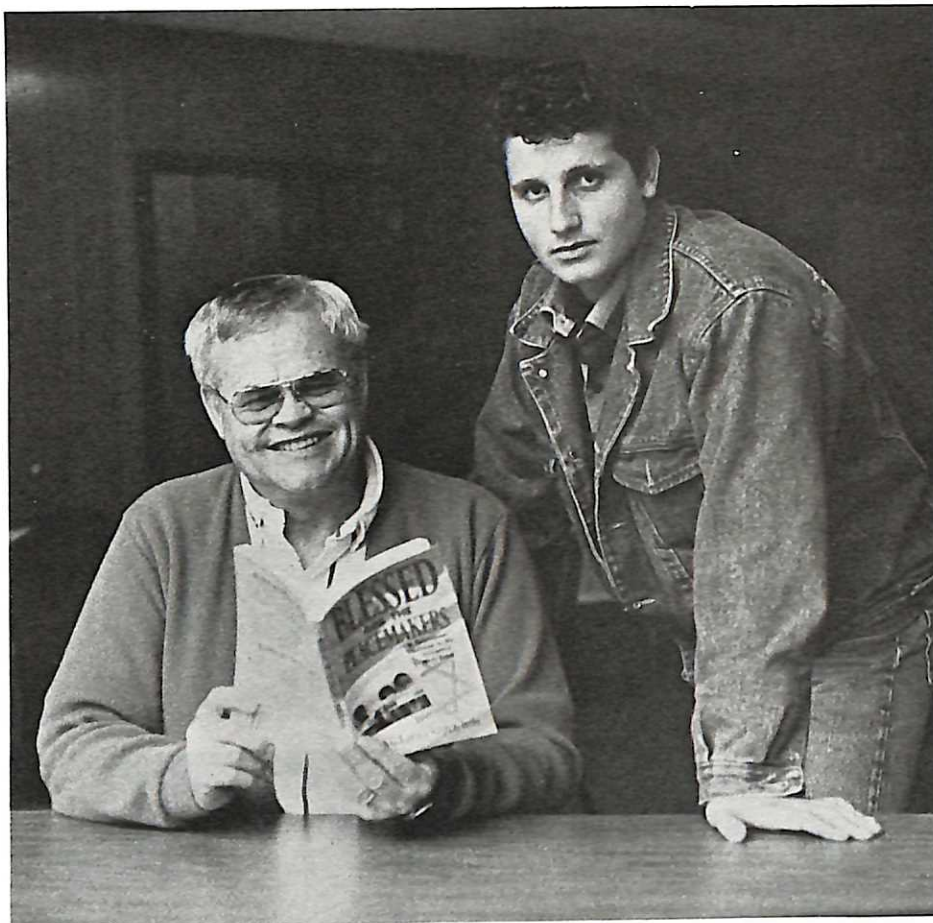
As a result of his latest book—along with regular travels to the Holy Land and extensive study of the people there—Beebe has become recognized as an expert on the Israeli-Palestinian issue. That expertise led to regular interviews by the media during the Persian Gulf War.

Interest in Beebe began with talk-show hosts, who were responding to a promotional piece about his book. Then the war broke out, and Beebe found himself interviewed 50 times on radio and four times on television concerning Arab/Israeli relations.

All but four of the interviews were performed by phone hook-up. A 45-minute in-studio radio interview at KKEY in Portland and a six-minute interview on AM Northwest were among Beebe's local appearances. He also traveled to Chicago and Florida to conduct television interviews on the Christian Television Network and others.

Beebe says his most interesting interview occurred an hour after the war started and before President Bush addressed the nation. Station KKLA out of Los Angeles, Calif., called him to conduct a 10-minute interview with Admiral Eugene Carroll in Washington, D.C. Beebe said both their opinions were "very cautious" concerning the war.

Many of the interviews also included an opportunity for listeners to call in and ask Beebe various questions or express an opinion about his views. Some of the callers were extremely hostile, according to Beebe. "One person felt that I, by even suggesting that the Palestinians had any rights to a homeland, was totally un-Christian," he



Ralph Beebe with his book and Suleiman Rantisi, recipient of GFC's Palestinian Scholarship Fund.

said. "The feeling that the Jews had no moral responsibility to the Palestinians because they are God's chosen people" was a typical point of view, Beebe said.

At a time when Americans were ultra-patriotic and gung-ho about the war, Beebe's Palestinian sympathies were not welcomed by many people. Beebe said he answered their hostile questions by saying, "Clearly in the Old Testament Israel is God's chosen nation, but it is still subject to obedience. Really, the Old Testament suggests that any nation that supports Israel

without any reservation whatsoever could very well be in jeopardy in the eyes of God."

In giving his reasons for writing the books and doing the interviews, Beebe said, "I want people to sympathize with the Palestinians. I also don't want them to lose their sympathy for Jews. We need to have balance in our sympathies.

"I do support the Palestinian cause today, but I also support Israel and so do most Palestinians. They just want to have a homeland of their own," he explained.

(See "Beebe" on page 8.)

## HRM Becomes MHR

After five successful years pioneering the way in Oregon, George Fox College's program called Human Resources Management no longer exists.

Instead, the College now is offering the program as Management of Human Resources.

The name change became effective in August. And, yes, the reordering of the words does make a difference, according to Dirk Barram, GFC's vice president for graduate and continuing studies.

"The rationale was to settle on a name that more accurately reflects the curricular content," Barram said. "Human Resources Management implies personnel management, whereas the program's curriculum is broader than personnel, focusing on generic management skills, and is applicable beyond the personnel field."

Barram said the new name was selected because it is similar enough to the original to retain the strong name recognition. He said it is believed the name change will appeal to a wider segment of members of the business community who may be considering returning to college to complete their degrees.



## Celebration

(Continued from page 1)

their celebration, they glorified the Lord and gave Him credit for making the College what it is."

Credit for the success of the Centennial celebration goes to Barry Hubbell, assistant to the President, and members of the Centennial Committee, which he chaired.

Hubbell began collecting information about other college's centennial observances six years ago, and the committee first met to begin planning back in 1988. Like many other institutions, George Fox College included things like a dinner, time capsule, and published history to recognize its 100th year. Unique to GFC's Centennial, however, was the Centennial Fair and the construction of the Centennial Tower.

For Hubbell, leaving behind the tower as the focal point of the campus quadrangle made the Centennial a success. So did the crowd of 3,500 to 4,000 people who attended the three-day celebration.

"It's a case of you're glad that that many people like you and want to celebrate with you," he said.

For those unable to attend the celebration—or for those who want to savor the memories—the College is making videos of the weekend's events available for purchase. The Centennial Highlights Video contains highlights from Sunday's festivities, as well as excerpts from Monday night's time capsule dedication. The 60-minute tape sells for \$19.95. Also available is an hourlong concert video of the performance by the Four Flats and Day-spring for \$14.95, or both tapes can be purchased for \$29.95.

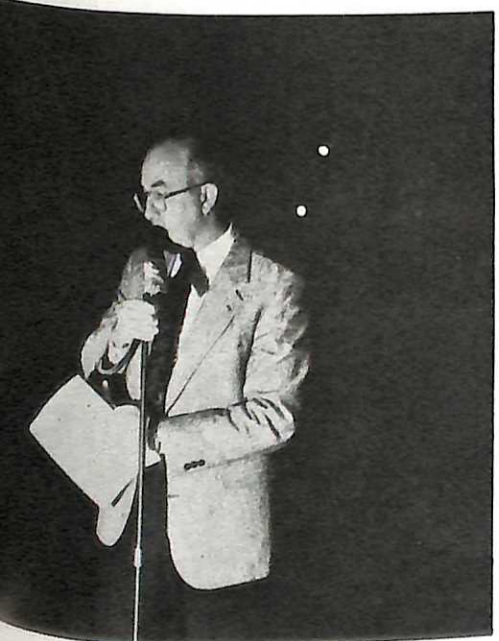
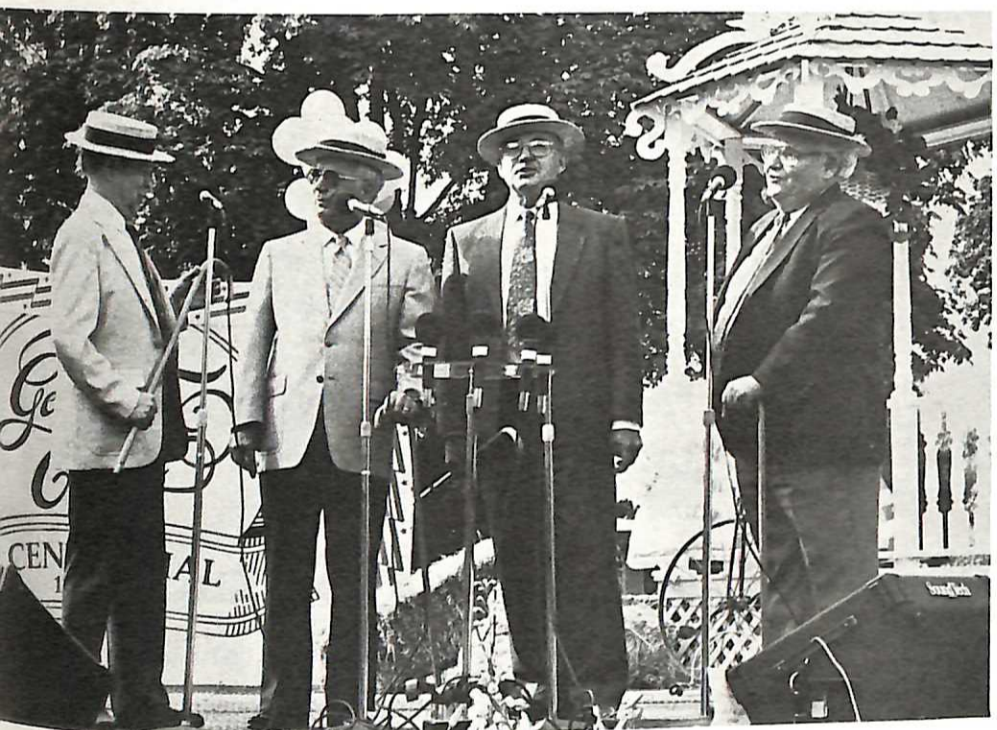
Videos of the lectures by the Centennial Speakers are \$9.95 each or \$29.95 for all four.

To order any of the above videos, contact the George Fox College Video Communication Center.



Page 4 photos, clockwise from top: Roger Minthorne, chairman of the Board of Trustees, serves the first piece of the Centennial birthday cake to Daisy Read, GFC's oldest living alumna. Fairgoers line up for the free picnic lunch provided as part of the College's Centennial celebration. A young quiltmaker flashes a smile while participating in the Centennial Fair's "Turning of the Quilts" exhibit. Board chairman Roger Minthorne (left) and President Edward F. Stevens display the plaque to go on top of the time capsule. People waited an hour for a ride in a hot air balloon. President Stevens reads the list of ingredients for the multi-layered Centennial birthday cake (behind him) that fed 3,000 people.





## Sportsmen of yesteryear

**W**INNING TRADITIONS at George Fox College had their start in the College's earliest years. *A Heritage to Honor, A Future to Fulfill* contains success stories of Bruin athletic teams, speech students, and music groups. It also tells of the sacrifices that helped make the College what it is today. Written by Ralph Beebe for the George Fox College Centennial, the 152-page hard-back book includes more than 200 historical photos to supplement the fascinating history.

**T**O ORDER YOUR COPY, send \$24.95 to The Barclay Press, 600 E. Third St., Newberg, OR 97132.



Page 5 photos, top to bottom: John Bowman, professor of music, directs alumni and students in a combined choral performance as part of the birthday party for Newberg-area alumni and friends. The releasing of a cage of doves followed the cutting of the Centennial birthday cake. The Centennial Fair culminated in a reunion concert by the Four Flats: (from left) Dick Cadd, Ron Crecelius, Norval Hadley, and Harlow Ankeny. A demonstration of life on the Oregon Trail was just one of many exhibits that brought a historical flavor to the Centennial Fair.

# ALUMNI NOTES

**Harold Ankeny (G50)** has retired after 23 years with George Fox College. Positions he held over the years included dean of students, director of financial aid, director of research and planning, and director of planned giving.

**Randall (G53) and Norma (Davis) (n52) Emry** live in Talent, Ore., where she recently retired after 19½ years with the local school district. He continues to work as an officer for the county animal control.

**Barbara (Berg) Beil (G65)** retired from the U.S. Navy July 1 after completing 26 years of service. Her last job was as commanding officer at the Naval Training Station in Orlando, Florida. Attending the retirement ceremony June 14 was **Joyce (Klutsenbaker) Barker (G65)** and her family from Houston, Texas. Barbara and her husband, Jim, will remain in Orlando upon her retirement.

**Kent Thornburg (G67)** has been elected president of the American Heart Association, Oregon Affiliate. He will serve during the 1991-92 fiscal year, which began July 1.

**Harold Thomas (G69)** received a master of divinity degree from Western Evangelical Seminary, June 8, 1991.

**Byron Debban (G70)** has found time from his busy chiropractic center in Shelton, Wash., to play Pro/Am tennis in the Bahamas. He recently won the Windhem Rose Annual Classic doubles tournament in Montego Bay.

**Ernest Martin (G70)** has been appointed by the U.S. Commission on Civil Rights to a two-year membership term on its advisory committee for the state of Washington. The purpose of the newly chartered committee is to discuss current civil rights developments in the state.

**Jack Rea (G70)** has been appointed vice president for administrative affairs for Houston Graduate School of Theology. His wife, **Celesta (Johnston) (n70)**, is staff assistant at Hardcastle Real Estate in Pearland, Texas.

**Stuart Willcuts (G72)** is vice president of Northwest Medical Teams, a relief agency currently operating three medical warehouses as part of the United Nations efforts on behalf of the Kurdish refugees in Iraq.

**Steven Fellows (G76)**, assistant administrator of Sutter Memorial Hospital in Sacramento, Calif., was advanced to Fellowship status in the American College of Healthcare Executives. Fellowship is the highest level of professional achievement in the college. Fellows must demonstrate their education, experience, and leadership in the health care field over a period of several years. They also must complete a significant project on a subject related to health care management.

## MARRIAGES

**Tim Hardie (G77)** and **Judy St. Clair**, June 29, 1991, in Beaverton, Ore.

**Jeffrey Peyton (G84)** and **Nancy Johnson**, July 14, 1991, in Greeley, Colo.

**Lori Edens (G85)** and **James Jensen**, June 8, 1991, in Anchorage, Alaska.

**Susan Fridley (G85)** and **Francisco Rojas**, March 23, 1991, in San Francisco.

**Dwight Patterson (G85)** and **Dana Hardin**, June 15, 1991, in Vancouver, Wash.

**Marc Willcuts (G85)** and **Lori Gayle (G86)**, Dec. 7, 1990, in Newberg.

**Amy Cobb (G87)** and **John Burke**, July 27, 1991, in Gresham, Ore.

**LaVonna Zeller (G88)** and **Jim Williams**, July 13, 1991, in Portland.

**Debora Weber (G89)** and **Daniel Stupur**, Sept. 14, 1991, in Clackamas, Ore.

**Krista Scudder (G90)** and **Christopher Woolsey** (student), Aug. 3, 1991, in Clackamas, Ore.

**Diana Wilhite (G90)** and **Scott Winter** (student), June 29, 1991, in Portland.

**Heather Campbell (G91)** and **Matthew Milligan**, June 22, 1991, in Portland.

**Laura Inman (G91)** and **Scott Frazier**, Aug. 10, 1991, in Beaverton, Ore.

**Carol (Seibert) Kelley (G77)** has had some of her original compositions played on KBVM radio station in Portland. She performed at Portland's Memorial Coliseum at a pro-life convention in September.

**Scott Mayfield (G77)** was recently appointed to the Oakdale (Calif.) Union Elementary School Board. He is currently senior pastor of the Oakdale Free Methodist Church.

**Kerry Barnett (G79)** is assistant director of the Career Development Center for the University of Southern California.

**David Myton (G80)** received a Ph.D. in environmental science and resources/chemistry from Portland State University. He has accepted a position at Truckee Meadows Community College in Reno, Nev.

**Colin Hart (G81)** received a master of divinity degree from Western Evangelical Seminary, June 8, 1991. He is currently pastor of Caldwell (Idaho) Friends Church.

**Lynn Ford (G82)** is a job service specialist for the Washington State Employment Security Department and half-time music director at Hillcrest Nazarene Church in Vancouver, Wash.

**Wade (G82)** and **Jere Witherspoon** began work with Interaction, Inc., in October 1990 after completing their term with Wycliffe Bible Translators in Papua, New Guinea. Interaction, Inc., is a ministry to missionary families with an emphasis on missionary children.

**Brian Aitken (G83)** is a certified public accountant for Kenneth Leventhal and Co., in Newport Beach, Calif.

**Lana (Behling) Wolford (G83)** lives in Reedley, Calif., where her husband is the pastor of Christian education and college/career ministries at Reedley Mennonite Brethren Church. She is an "at-home" mom for their boys and volunteers with the Mentor Mom/Teen Mom (MOPS) program.

## BIRTHS

**Stan (G72) and Ellen (Perry) (n74) Morse**, a girl, Katelyn Christene, Oct. 26, 1990, in Boise, Idaho.

**I. Aven (n74) and Susan (G89) Crisman**, a girl, Johanna Grace, May 30, 1991, in Portland.

**Mark (G77) and Denise (Iverson) (G85) Vernon**, a boy, Brett Spence, June 19, 1991, in Portland.

**David (G81) and Teresa Bowers**, a boy, Skyler David, June 25, 1991, in Salem, Ore.

**Karen (Maxwell) (n81) and Greg Dixon**, a girl, Karisah Jane, July 3, 1991, in Long Beach, Calif.

**Sandra (Archer) (G81) and Charles Young**, a boy, Christopher Archer, June 25, 1991, in Columbia, S.C.

**Judy (Glyshaw) (G83) and Philip Fox**, a boy, Bradley Randall, July 29, 1991, in Othello, Wash.

**Dena (White) (G83) and Eric Smith**, a girl, Kaylin Marie, April 8, 1991, in Portland.

**Betsy (Bletscher) (G84) and Dan (n85) Comfort**, a boy, Timothy John, July 24, 1991, in Milwaukie, Ore.

**Virrin (Basinger) (G84) and Scott McKellar**, a boy, Reed Aaron, May 30, 1991, in Portland.

**Erin (O'Hara) (G84) and Tim Rines**, a boy, Samuel Timothy, March 30, 1991, in Caldwell, Idaho.

**David (G85) and Shanna (Holdahl) (G85) Andres**, a boy, Garrett Lee, July 11, 1991, in Newberg.

**Karen (Barnhart) (n85) and Dave Doust**, a boy, Samuel William Arol, Aug. 5, 1991, in Park City, Utah.

**Scott (G85) and Valerie (Haynes) (G85) Woods**, twins, a boy, Trevor Colby, and a girl, Meghan Yolande, May 16, 1991, in McMinnville, Ore.

**Fritz (G87) and Kay (Bruch) (G88) Neumann**, a boy, Jonathon David, July 2, 1991, in Portland.

**Wendy (Harmon) (G87) and Mike (G88) Pilcher**, a girl, Margaret Rose, July 20, 1991, in Mt. Vernon, Wash.

**Heidi (Ediger) (n89) and Matthew Hess**, a girl, Alisha Dawn, Jan. 8, 1991, in Portland.

**Rebecca (Nauman) (G89) and Jim (G90) Steele**, a boy, Anthony Michael, Aug. 2, 1991, in Newberg.

**Richard Zeller (G83)** is one of 12 featured vocal soloists during four major concerts at this year's Oregon Bach Festival. His 1991 season includes contracts with the Metropolitan Opera and the Handel and Haydn Society.

**Paul Almquist (G84)** received a master of arts degree in Christian history and thought from Western Evangelical Seminary, June 8, 1991.

**Jeff Peyton (G84)** has been named acting director of percussion studies at the University of Oregon in Eugene, where he is teaching 24 percussion majors, conducting two percussion ensembles, and acting as assistant conductor of the University Symphony Orchestra. He also has been appointed to the principal percussion position with the Eugene Symphony. Jeff performs regularly with the Oregon Symphony, Portland Opera, Oregon Ballet Orchestras, Peter Britt Festival Orchestra, the Oregon Bach Festival, and Oregon Coast Festival Orchestras.

**Joel Keith (G85)** is a systems analyst in the health care field for Electronic Data Services in Harrisburg, Pa.

**Scott Woods (G85)** is custodial contracts administrator at Western Oregon State College.

**Greg Mozel (G86)** received a master of divinity degree from Western Evangelical Seminary, June 8, 1991.

**Pam (Hagen) Beebe (G87)** received a master of arts degree in Christian counseling from Western Evangelical Seminary, June 8, 1991.

**Diana Crane (G87)** received a master of arts degree in Christian counseling from Western Evangelical Seminary, June 8, 1991.

**Lisa Magee (G87)** received a master of arts degree in Christian counseling from Western Evangelical Seminary, June 8, 1991.

**Christopher Divine (G88)** is a driver for Newberg Hospital Ambulance.

**Deanna (Aarhus) Duncan (G88)** is a second-grade school teacher in Bakersfield, Calif.

**Sylvia MacWilliams (MHR88)** is project director at Southwest Washington Medical Center. She is currently developing a primary care community clinic in Clark County (Wash.) for residents with limited or no funds for primary health care.

**Mike Johnson (MHR89)** is software installation manager for Video Store Check-out Computers in Portland.

**Bob Yardley (MHR89)** is executive director of Meridian Park Medical Foundation in Tualatin, Ore.

**Gary Marks (MHR90)** is city administrator for Heppner, Ore.

**Melanie Springer (G90)** is a substitute teacher for the St. Louis (Mo.) School District. In January, she will begin graduate school at the University of Missouri.

**Rod Aust (G91)** teaches third grade at Wilsonville (Ore.) Primary School.

## DEATHS

**Christine (Hollingsworth) Chance (G18)** passed away June 17, 1991, in Turlock, Calif.

**Dilla (Tucker) Winslow (G24)** passed away July 20, 1991, in Nampa, Idaho.

**William Post (n35)** passed away Sept. 15, 1991, in Newberg.

**Wayne Burt (G39)** passed away Aug. 24, 1991, in Newport, Ore. The family has requested donations be made to George Fox College in his memory.

**Reola (Symons) Tate (G39)** passed away July 23, 1991, in Lincoln City, Ore. The family has requested donations by made to George Fox College in her memory.

**Rueben Cogswell (n47)** passed away Sept. 13, 1991, in Vancouver, Wash.

**Dorothy (Williams) Tjostolvson (G54)** passed away Feb. 7, 1991, in Morton, Wash.

**Maynard Corlett (G59)** passed away Aug. 25, 1991, in Portland.

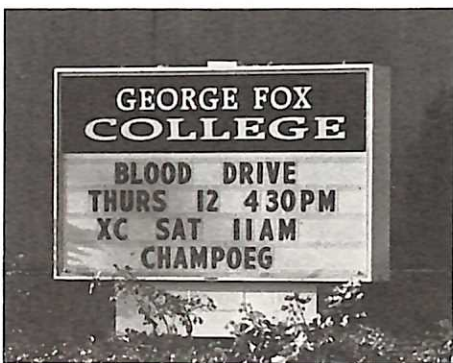
## Alumni Class Gifts Provide Signs

Two new reader-boards have been installed on the George Fox College campus thanks to three group donations.

The lighted signs are a direct result of donations of \$2,500 by the George Fox College Auxiliary, \$1,981 by members of the Class of 1985, and \$2,000 by the class of 1990.

Managed by the Office of College Relations, the signs list upcoming music, drama, and sports events occurring at George Fox College. The displays, located on Highway 99W at the corner of River and Hancock streets and on Fulton Street near the College's fine arts and sports facilities, are updated every Monday morning.

The reader-boards were designed and installed by the Martin Brothers Sign Company of Salem.



## Three Elected to Alumni Board

Three George Fox College graduates have been elected to serve on the Alumni Association's Board of Directors.

**Diane (Beebe) Eichenberger**, **Lloyd Pruitt**, and **Naomi (Martin) Wilson** were chosen to represent GFC's more than 5,500 alumni during three-year terms.

The Alumni Board, which meets four times a year, consists of nine elected officials, three representatives appointed from the Management of Human Resources program, the senior class president and past president, and the College's director of alumni relations, **Gary Brown**.

Among the board's responsibilities are planning and directing Homecoming events, planning and serving the Senior Dinner during Commencement weekend, and developing other avenues of service to alumni.

**Eichenberger**, a 1977 GFC graduate from Newberg, is director of finance at Friendsview Manor in Newberg. Previously, she worked for Voice of Calvary Ministries in Jackson, Miss.

**Pruitt** was elected to his second consecutive three-year term after serving on the board from 1988 to 1991. He earned his bachelor of arts degree in education and psychology from GFC in 1964 and is a real estate broker for Oregon Realty in Portland.

**Wilson**, another incumbent, is a Newberg school teacher of Chapter I reading. A 1958 George Fox graduate, she is a member of Newberg Friends Church, where she serves in the Christian education department. She is also a member of the Christian education board for Northwest Yearly Meeting of Friends.

## Alumni Office Initiates Class Executive Program

Increased support for the Annual Fund and improved ties between alumni and the College are the goals of a new program begun at George Fox College this year.

The Class Executive Program uses volunteers to serve as liaisons between their classmates and GFC. Through letters and phone calls, these volunteers keep their classmates in touch with one another and the College while encouraging them to support the College financially.

**Gary Brown**, director of alumni and parent relations, initiated the program last spring and has been pleased with the results. "We've gotten some really good responses," he said, "including personal letters. People hadn't heard from one another in years. They've written letters to the class execs; I've gotten letters. Some people have started giving to the College again that hadn't given for years."

**Abigail (Miller) Crissman** volunteered to serve as the Class Executive for the Class of 1943. "I thought it would be a good thing to do," she said. "I thought maybe I could keep in contact with some of the members of my class."

She has enjoyed renewing the ties with people she went to school with. "I just

heard from four," she said. "I hadn't heard from them since I'd left the College."

With the exception of some of the earlier classes that will be grouped together, the goal is to have a Class Executive for every class. Thus far, **Brown** has recruited 40 volunteers, with 10 positions still left to fill.

An alumnus need not be a graduate to serve as a Class Executive, and those from classes with more than 100 members may select assistants to help them.

The only requirements for the job are an ability to attend an annual meeting on campus and a willingness to write two letters over the course of a year and to follow up, if necessary, with phone calls.

The first letter is written during the annual meeting in the fall; the second is mailed in March. The staff of the Alumni Office converts the rough drafts into personalized letters and supplies envelopes, stamps, and return envelopes. Class Executives sign the letters and place them in the mail, with postage paid by the College.

**Brown** expects the Class Executive Program to have a dramatic impact on the percentage of alumni who give to George Fox College. While total giving by alumni in 1990-91 was up by more than \$66,000 over

the previous year, unrestricted giving to the Annual Fund was down. Alumni made just \$73,475 in Annual Fund gifts—barely over half of the \$140,000 goal and down \$16,000 from last year.

Since unrestricted gifts go directly into the general budget to help keep tuition and student costs down, such donations are especially important. In addition, the Collins Foundation of Oregon has a matching grant program that could result in up to \$25,000 of additional monies for the Annual Fund.

Of the seven colleges in Oregon that participate in the Collins program, George Fox College ranked last in 1989-90 for the percentage of alumni who are donors. In 1990-91, the College failed to qualify for the matching dollars because that figure fell to 11.8 percent. The other colleges' alumni donor percentages ranged from 20 to 41 percent.

As little as \$5 a year qualifies alumni as donors, something **Brown** believes everyone is capable of giving. "My personal goal is to have 35 percent of alumni contributing to the unrestricted fund by 1995," he said. "I believe with the Class Executive Program working right, we can beat that."

# STUDENT NEWS

## Dayspring Tours the Northwest

Dayspring, George Fox College's touring vocal ensemble, began its 1991-92 season Sept. 9 with a packed concert schedule that ends in May after a nonstop month of travel.

Performing over 30 concerts this year, members of Dayspring will be on the road two weekends out of every month until May. From May 3 to May 31, they will travel throughout the Pacific Northwest—including Washington, Idaho, Montana, and Oregon—where the majority of GFC students and alumni live.

Already the vocal ensemble has performed at the Oregon State Women's Prison, in retirement homes, and for various small churches in the area. Manager, driver, and chaperone Gary Brown said, "We try to keep the ministry focus. Performances at the big churches are fun, but that's not why we do this."

One lady from the 25- to 30-person congregation of Scotts Mills Friends Church in Scotts Mills, Ore., sent Brown a card saying, "For you to allow time in your busy schedule for our tiny congregation means a lot to me."

Though budgeted for by the College, Dayspring relies heavily on donations and gifts. Recently, the Crowell Trust Fund gave

\$5,000 in support of the ministry focus of the singers.

Last year the vocal ensemble performed at Disneyland and Magic Mountain in California. Brown said they drew large crowds and were able to sing "some solid Christian music." They were given an open invitation by Disneyland to return whenever they could.

Also among last year's highlights was the performance of the national anthem before a Portland Trail Blazers game in Memorial Coliseum. They've been invited back to sing, without audition, at least once this year for the Blazers.

In addition, the group recorded its own album, entitled "Forever In His Care," last year. The \$8 cassette is sold by the College and at all Dayspring appearances.

Dayspring's emphasis on Christian ministry begins with the singers themselves. Brown said he believes the reason members of the group haven't had any serious conflicts or problems is because they worship together before every performance and on a daily basis while touring.

He said in the two years he has been a part of the group, "We have never had a bad concert, significant vehicle problems, or health problems. Some of the kids haven't

even been able to speak before a concert, but the Lord touched them and they were able to sing for the performance."

This year's members include first-year rookie Danielle Armstrong, a sophomore music education major from Astoria, Ore.; three-year veteran Missy Bullock, a senior music performance major from Portland; two-year veteran Tom Burks, a junior biblical studies major from Sisters, Ore.; and three-year veteran Megan Heasley, a senior music performance major from Anchorage, Alaska.

Also part of Dayspring are freshman Darin Mitchem of Jefferson, Ore.; first-year rookie Scott Nilsen, a junior biblical studies major from Seattle, Wash.; three-year veteran Paul Seideman, a senior psychology/Christian ministries major from Boise, Idaho; and three-year veteran Christie Wilson, a senior music performance major from Costa Mesa, Calif.

Dayspring was founded in 1978 as a touring singing group representing George Fox College. A special "All-Dayspring Homecoming and Reunion" is scheduled for GFC's homecoming weekend Feb. 21 and 22. Former Dayspring members are encouraged to call Gary Brown, director of alumni relations, at 503/538-8383, ext. 223 for more information.



Dayspring members for 1991-92 are (front row, from left) Paul Seideman, Danielle Armstrong, Christie Wilson, and Scott Nilsen, (back row) Tom Burks, Missy Bullock, Megan Heasley, and Darin Mitchem.

## Dayspring Concert Schedule

|                      |  |
|----------------------|--|
| Nov. 17, 9:30 a.m.   | Clackamas Park Friends Church, Milwaukie, Ore.   |
| Nov. 17, 6:00 p.m.   | First Nazarene Church, Forest Grove, Ore.  |
| Dec. 8, 10:45 a.m.   | South Salem Friends Church, Salem, Ore.  |
| Jan. 18, 6:00 p.m.   | Dinner party with President Stevens for North Oregon Coast alumni, to be held in the Tillamook area. Look for more information coming in the mail.   |
| Jan. 19, 10:00 a.m.  | Netarts Friends Church, Tillamook, Ore.  |
| Jan. 19, 6:00 p.m.   | Oregon City Evangelical Church, Oregon City, Ore.  |
| Jan. 26, 10:45 a.m.  | McKinley Hill Friends Church, Tacoma, Wash.  |
| Jan. 26, 6:00 p.m.   | Adna Evangelical Church, Chehalis, Wash.   |
| Feb. 9, 10:50 a.m.   | Svenson Friends Church, Astoria, Ore.  |
| Feb. 22              | Homecoming at George Fox College   |
| Feb. 23, 10:30 a.m.  | Mt. View Friends Church, Vancouver, Wash.  |
| March 29, 10:00 a.m. | Discovery Friends Church, Eugene, Ore.   |
| March 29, 6:00 p.m.  | Kingwood Bible Church, Salem, Ore.   |
| April 19, 10:45 a.m. | Sherwood Friends Church, Sherwood, Ore.  |
| April 19, 6:00 p.m.  | Alliance Church (CMA), Dallas, Ore.  |
| April 26, 10:45 a.m. | Rose Valley Friends Church, Kelso, Wash.   |
| May 3-31             | May Tour: Dayspring will travel throughout Washington, Montana, Idaho, and Oregon during the month of May. The tour will start with a 6:00 p.m. performance at Olympic View Friends Church in Tacoma, Wash., on May 3 and end May 31 with a 6:00 p.m. home concert at Newberg Friends Church. Alumni along the tour route will receive a special mailing of that schedule. |

For more information regarding Dayspring, call Gary Brown at 503/538-8383, ext. 223.

## CAMPAIGN NEWS

### Collins Foundation Gives GFC \$350,000

The Collins Foundation of Portland, Ore., has awarded George Fox College a \$350,000 grant in support of its latest fundraising campaign.

Officially launched in April, the Centennial Campaign has as its goal \$16 million. More than \$5 million in gifts and pledges have been raised to date.

The Collins Foundation was founded in 1947 by four members of the Collins family. The purpose of the foundation is to operate and use its funds exclusively for religious, charitable, and educational purposes within the state of Oregon.

George Fox College has benefited from the generosity of the Collins Foundation before. The foundation gave \$400,000 for a new chapel-performing arts center in the early 1980s, and in 1986, the College received \$200,000 to expand and renovate its library.

The Collins Foundation also sponsors a program designed to stimulate alumni support at independent colleges and universities in Oregon. Since George Fox College began participating in the challenge grant program in the 1966-67 school year, the foundation has given GFC nearly \$200,000 to encourage alumni giving.

### Faculty and Staff Join Campaign

With the successful completion of the President's Council portion of the Centennial Campaign, efforts to raise a total of \$16 million for George Fox College now center on the College's employees and alumni.

On Oct. 10, a kickoff dinner was held to launch the campaign among GFC faculty and staff. Advance gifts have reached \$313,285. The total Faculty/Staff Campaign goal is \$350,000. Serving as chairman of the campaign among his peers is Paul Chamberlain, professor of chemistry and chairman of the Division of Natural Science.

Assisting him is Ron Stansell, assistant professor of religion, as chairman of the advanced gifts committee, and campaign vice-chairmen Dirk Barram, vice president for graduate and continuing studies; Jim Foster, professor of psychology and chairman of the Division of Social Science; Jo Helsabeck, management of human resources instructor; and Craig Taylor, director of athletics.

### President's Council Exceeds Goal

Despite the fact that members of the President's Council are already regular donors to George Fox College, 76 percent made new commitments in response to the challenge of the Centennial Campaign.

As a result, the President's Council Campaign exceeded its \$1 million goal by more than \$450,000. As of Sept. 30, the total raised since the campaign's launching in April stood at \$1,456,594.

The President's Council was only the second group solicited since the Centennial Campaign began April 22. The strategy of the Development Office staff is to reach the total \$16 million goal by breaking the campaign into segments. The President's Council was chosen to follow the trustee phase of the campaign because it was a group of people who already were committed financial supporters of George Fox College.

"They were like advance gifts for the entire campaign," Dave Adrian, director of development, said. "In essence, their campaign became leadership gifts as we launched the Centennial Campaign."

Although solicitation was scheduled until the end of June, members of the President's Council reached their \$1 million goal by June 14. Their achievement sets a tone of success for the rest of the campaign.

### Students Reelect Winter as President

George Fox College students have reelected Scott Winter as president of their student government association, the Associated Student Community of George Fox College (ASCGFC), for the 1991-92 academic year.

Only two other times in GFC's history has a student body president taken office for a second term.

Vice president for the 1991-92 school year is Jenny Gibb, a senior biology/pre-medicine major from Oregon City, Ore.

Secretary is Tricia Kirkendall, a junior elementary education major from North Bend, Ore.

Treasurer is Erinn Connelly, a junior business major from Newberg, Ore.

Activities Director is Jen Walker, a senior sociology major from Hillsboro, Ore.

Christian Services Director is Melinda Bissell, a senior sociology major from Yorba Linda, Calif.

Director of the Student Union Building is Brent Courtney, a senior physical education major from Longview, Wash.

The Student Chaplain, selected by application, is Jill Townley, a senior international studies major from Leavenworth, Wash.

## Women's Soccer Joins Varsity Sports Offered at GFC

In early November of last year, Byron Shenk sent out 500 letters to Northwest high school girls' soccer coaches introducing himself and the infant women's soccer program he was building at George Fox College. He asked for names and evaluations of players who might be interested in playing for the Lady Bruins.

He received two responses.

So much for mail-order soccer players.

Despite a late start that didn't allow him to see any high school games, Shenk had 20 players join the team this fall. Most came through his personal contacts and word of mouth.

It has been hard to get top quality players to come to a brand-new program. "It's more difficult to recruit for than an established program," he said.

Shenk is molding a team from 12 freshmen, six returning GFC students, and two transfers. Despite the fact that other teams had a head start in recruiting, he does have players with outstanding ability.

Julie Jensen is an all-league midfielder out of Christian High School in El Cajon, Calif. She comes to George Fox after attending Cuyamaca Community College for two years.

Another midfielder who joined the Lady Bruins is Marla Wittkopp. She is a 1991 graduate of North Valley High School in Grants Pass, Ore., who started on the boys' team her junior year. "She's very competitive," Shenk said. "She's used to people trying to intimidate her."

A member of Washington select teams, Michelle Clifton brings speed to the Lady Bruin offense. She is a 1991 graduate of Shelton (Wash.) High School who played midfielder and forward.

Six players with varsity high school experience already were on campus. On a team with no college soccer experience, the coach has six returning students—seniors Jennifer Childress, Bellingham, Wash., and Nicole Speers, Tualatin, Ore.; junior Meghan Ross, Centralia, Wash.; and sophomores Roxanne Berg, Portland; Crystal Clark, Anchorage, Alaska; and Constance Wilhelm, Portland.

This is Shenk's 22nd year coaching soccer but his first leading women.

"The main differences are in speed, strength, and size," he said. "As far as tactics and technique are concerned, men's and women's soccer are absolutely identical."

Shenk coached men's soccer for 18 years at Virginia's Eastern Mennonite College and another three at Goshen College in Indiana.

He came to George Fox College last year as an associate professor of physical education and assistant men's soccer coach after doing doctoral work at the University of Virginia.

People have told him not to expect any early success. "It's a tough district," they say. "A new team probably won't win any games for the first two years." "I thank them for their courtesy and kindness," says Shenk, "but I think if we play smart soccer we can beat a couple teams." (The Lady Bruins were 2-4-2 at midseason.)

Shenk says he knows he must be realistic about the time it takes to develop a team into a consistent winner, but "a tradition has to have a beginning, so why not begin early?"

## Accident Claims Assistant Coach

A tragic bicycle-car accident has taken the life of one of the Northwest's top small-college female athletes in recent years.

Diane (Walter) Davis, a 1986 George Fox College graduate, died Wednesday, Sept. 18, at Oregon Health Sciences University Hospital in Portland after being struck by a truck on Sept. 11. She was 27.

Davis was bicycling two miles northwest of Newberg on North Valley Road, in training for triathlon competition.

The accident hit hard at the George Fox College community. The three-sport athlete (volleyball, softball, and basketball) was an assistant softball coach at George Fox, helping her husband, Chris, GFC's head softball coach last fall.

Davis was a second-grade teacher at Newberg's Open Bible Christian School.

As a GFC student, Davis was an NAIA District 2 all-star in both softball and volleyball, named three years (1983, 1984, 1986) to the district's softball honors team as a shortstop.

In volleyball she was named a district all-star in 1984. She received George Fox's MVP award in volleyball three consecutive years. Twice, as a junior and again as a senior, she was named National Christian College Athletic Association District 8 Player of the Year in volleyball. She helped the Lady Bruins win the national NCCAA volleyball title in 1984. She was nominated as a national NAIA Academic All-American, with a 3.64 grade point average.

On the volleyball court, Davis was a middle blocker, leading the Lady Bruins in hitting, blocking, and defense for two years. She had a 99 percent service rate, missing just four serves as a senior. Over her four years in volleyball, Davis averaged more than 200 kills a season.

Davis also played basketball her junior and senior years, starting as a junior and hitting 22 points in her first game.

"In my four years as her coach, I've not had a person whose overall ability as a player, leadership, and academic excellence or coachableness stood out with such clarity as has Diane's," volleyball coach Steve Grant said after Davis received her senior awards. "She leaves a standard of excellence that will be a challenge for others to measure up to," Grant said at the time.

"She is one of the athletes in a class by herself," George Fox Athletic Director Craig Taylor said upon learning of her death. Taylor, who coached Davis in softball and basketball, said, "If you have one or two like Diane in your coaching career, you consider yourself blessed."

"Diane was the epitome of what Christian college athletics are all about."

As a student, Davis majored in elementary education and was active in the College's discipleship program.

The family has requested donations be made to George Fox College in her memory.



Diane (Walter) Davis as a student in 1985



Teresa Walsh is one of the members of GFC's first-ever varsity women's soccer team.

## Graduate Program

(Continued from page 1)

education faculty will be augmented with three additional persons in the next two years.

Glenn Moran has been hired as director of the Graduate Teacher Education Program. A member of the George Fox College faculty from 1979 to 1986, during which time he served as director of teacher education, he left GFC to become principal of Wilsonville Primary School, West Linn. After four years in that position, he was named personnel director of the West Linn School District last year. Moran has a doctorate from the University of Northern Colorado.

The new George Fox College program follows TSPC guidelines that provide for both fourth- and fifth-year programs to prepare teachers. Oregon lawmakers promoted the change, encouraging discussion of ways to improve teacher education, specifically in subject-matter knowledge by teachers. The Master of Arts in Teaching program allows the student to concentrate in a specific field, or major, during all four years of undergraduate work, receiving a bachelor's degree in a specific interest area. The fifth year is then spent in developing teaching skills.

Students, however, still may participate in the four-year program, with George Fox College authorized to offer Oregon Basic Teaching Certificates in elementary and secondary education with endorsements for 12 fields. This year GFC has 195 students enrolled as education majors, and that

number is not expected to drop with the new program, Moran said.

The M.A.T. program is expected to draw recent GFC graduates who have completed bachelor of arts or bachelor of science degrees in non-education fields, postgraduates from other colleges and universities, post-graduates wanting to reenter the work force as educators, and post-graduates interested in making a career change.

Students in the program will study psychological, sociological, historical, and philosophical foundations of education. They will apply these understandings in elementary and secondary classroom teaching experiences.

The George Fox College program will be offered in an initial summer session, followed by two full semesters of study. Thirty-six semester hours of class are required.

Thematic strands related to decision making, values, and multicultural awareness will be integrated throughout the program, according to Moran. They will add "affective and sociological qualities to the program that are not reflected in single courses but are interwoven throughout the curriculum," he said.

George Fox College has been authorized to prepare secondary school teachers since 1966, with that program expanded in 1969, 1971, and 1983. In 1984 the College was authorized to begin its program in elementary teacher education. Approval was renewed in 1990.

## Beebe

(Continued from page 3)

Royalties from the book "Blessed Are the Peacemakers" are being divided between Beebe and the book's subject, Audeh Rantisi. Rantisi's half goes to fund higher education for Palestinians at the Evangelical Home for Boys in the West Bank, under Israeli military occupation. Beebe's half is designated for the Palestinian Scholarship Fund at George Fox College.

Currently the scholarship is helping Suleiman Rantisi fund his sophomore year at GFC as a computer engineering major.

Most Palestinians find it difficult to attain higher education because Israel's military is frequently closing their schools. Suleiman Rantisi's troubles are not over now that he is studying in America. In order to be able to return to his home after graduation, he is required by Israeli authorities to renew his permit regularly. This requires a trip home every three years.

"Sometimes when people go study three years [abroad] they [the Israeli military] don't let them go back to finish their last two years," he explained.

The naming of "Blessed Are the Peacemakers" as "Book of the Year" also involves a \$500 cash award. Beebe said he and Audeh Rantisi decided that the money should go to GFC's Palestinian Scholarship Fund.

Through the scholarship, the book, and the interviews, Beebe hopes to accomplish four things: "I pray that my efforts will do a bit to bring justice to Palestinians, peace in the Persian Gulf, credit to George Fox College, and most of all, honor to Christ's name and message," he wrote in a letter.

During Christmas vacation, Beebe will travel as a Joseph J. Malone Fellow to Saudi Arabia and other gulf nations for an intensive three-week study tour.