

1997

### 1997 Media Guide

George Fox University Archives

Follow this and additional works at: [https://digitalcommons.georgefox.edu/athletics\\_mentennis](https://digitalcommons.georgefox.edu/athletics_mentennis)

---

#### Recommended Citation

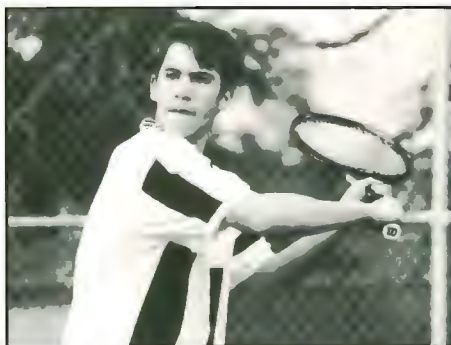
George Fox University Archives, "1997 Media Guide" (1997). *Men's Tennis*. 39.  
[https://digitalcommons.georgefox.edu/athletics\\_mentennis/39](https://digitalcommons.georgefox.edu/athletics_mentennis/39)

This Media Guide is brought to you for free and open access by the George Fox University Athletics at Digital Commons @ George Fox University. It has been accepted for inclusion in Men's Tennis by an authorized administrator of Digital Commons @ George Fox University. For more information, please contact [arolfe@georgefox.edu](mailto:arolfe@georgefox.edu).

# GEORGE FOX UNIVERSITY



**1997  
TENNIS**



One of the nation's fastest growing universities, George Fox University has a growing reputation to match. While enrollment has quadrupled in the last decade — reaching more than 2,000 students — the University has received national attention.

George Fox repeatedly has been named by *U.S. News & World Report* as one of "America's Best Colleges," earning its highest marks in academic reputation. The national magazine also has listed the University in its "Top Teaching Schools" and "Most Efficient" categories.

Five times, George Fox was named to the Templeton Foundation's Honor Roll for Character Building Colleges.

The University offers innovative programs. Each freshman student is provided a computer to keep upon graduating. Students reaching their junior year are eligible for an international study trip for which the University pays transportation costs. Through the Coalition for Christian Colleges and Universities and the Christian College Consortium, George Fox has students studying at five affiliated campuses, ranging from Hollywood Film Studies in California to American Studies in Washington, D.C., to Middle East Studies in Cairo, Egypt.

Early Willamette Valley Quaker settlers established Friends Pacific Academy in 1885. The college division was organized in 1891 to provide more advanced instruction.



An artist's rendering of the George Fox University Newberg campus.

In 1949, because of the many colleges in the Northwest with Pacific in their name, the College was renamed George Fox in honor of the founder of the Friends (Quaker) Church. In 1996, with the addition of Western Evangelical Seminary, George Fox became a university, offering students the choice of 35 undergraduate majors and 12 graduate degrees.

George Fox has maintained a distinctively Christian, liberal arts

mission. The University is committed to a residential campus atmosphere where students build a life plan. Education occurs whenever and wherever student experience contributes to human development — in or out of the classroom. The integration of faith, learning and living is a primary objective.

George Fox's most prominent alumnus is the late President Herbert Hoover, who attended Pacific Academy.

## Second-Year Men's and Women's Tennis Teams Building for Future

It's the second time around for George Fox's tennis teams. After taking their lumps as first-year programs, both teams hope experience and some new recruits can help make them competitive in the tough Northwest Conference of Independent Colleges.

While the women's team's biggest change is its coach, a talented new No. 1 singles player and three other solid freshmen will buoy the men.

New women's head coach Bonnie Elliott — Arizona's 1996 Tennis Pro of the Year — inherits six returners and will add five freshmen. Four of George Fox's top six from last year are back, including No. 1 singles player **Shawna Hughes (So., Edmonds-Woodway HS, Wash.)**.

"She's a real fighter," said Elliott. "She'd rather play a tough match than win an easy one."

Hughes, No. 2 **Kailea Curtis (Sr., North Marion HS, Aurora, Ore.)** and No. 5 **Kim Johnson (Jr., King's West HS, Silverdale, Wash.)** all ended last season on high notes by splitting a pair of matches at the Northwest Conference tournament.

Curtis is a team co-captain. "Kailea is really good at moving the ball around," said Elliott. "She has a great attitude and is a leader for the team."

No. 3 **Jenny Hamm (Sr., West Valley HS, Yakima, Wash.)** is the other co-captain.

"I've seen a lot of improvement in Jenny. She knows how to analyze her opponents and change her strategy to get the best results."

Hamm and No. 4 singles player **Amy Gault (Jr., Springfield HS, Ore.)** give George Fox a competitive No. 2 doubles team.

The women start the season with two tournaments and four matches on the road.

"I expect the season to improve as we get into some home matches," said Elliott.

"This program is just on the beginning level. We'll be moving up and becoming a contender."

On the men's side, second-year head coach Mark Sendelback added 6-foot-2 **Todd Hammans (Fr., Churchill HS, Eugene, Ore.)**, who brings experience at the state class 4A tournament.

"He's a really solid freshman," said Sendelback. "He can play with most everyone in the league. He's got the power of a No. 1 and he's got the tennis body — a Sampras body. He moves well, and he's got the ability."

The addition of Hammans allows Sendelback to move last year's No. 1 — **Rick Cruz (Jr., Hillsboro HS, Ore.)** — to the second spot.

"Rick will be a really solid No. 2," said Sendelback. "I think he'll have some upsets. He's mentally tough. He knows he can win."

Sendelback says the most improved player on the team is 6-

### HOW TO REACH US

College Switchboard 503/538-8383 • Athletics Fax 537-3864  
Sports Information Fax 537-3830

**Men's Tennis Coach**  
Mark Sendelback . . . 503/538-8383 ext. 2923, Home 648-4815

**Women's Tennis Coach**  
Bonnie Elliott . . . . . ext. 2913, Home 642-2375

**Volleyball Coach**  
Steve Grant . . . . . ext. 2917, Home 538-2091

**Men's Soccer Coach**  
Manfred Tschan . . . . . ext. 2919, Home 538-7131

**Women's Soccer Coach**  
Byron Shenk . . . . . ext. 2912, Home 472-6620

**Men's Basketball Coach**  
Mark Vernon . . . . . ext. 2918, Home 538-1295

**Women's Basketball Coach**  
Scott Rueck . . . . . ext. 2920, Home 538-7274

**Baseball Coach**  
Pat Bailey . . . . . ext. 2914, Home 537-3023

**Softball Coach**  
Chris Gross . . . . . ext. 2921, Home 538-1248

**Track/Cross Country Coach**  
Wes Cook . . . . . ext. 2915, Home 538-8078

**Athletics Director**  
Craig Taylor . . . . . ext. 2911, Home 472-9694  
ctaylor@georgefox.edu

**Associate Athletics Director**  
Hal Adrian . . . . . ext. 2922, Home 646-4880

**Sports Information Director**  
Rob Felton . . . . . ext. 2127, Home 538-7722  
rfelton@georgefox.edu

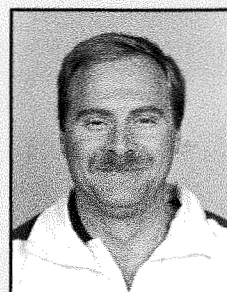
foot-2 **Luke Lesh (Sr., North Salem HS, Ore.)**, who led the Bruins in wins last year.

"Luke dedicated his summer to playing in tournaments and improving," said Sendelback. "He should win lots of matches at No. 3."

Rick Cruz's twin brother, **Rob Cruz (Jr., Hillsboro HS, Ore.)**, starts the season at No. 4 but will be challenged by **Justin Ubel (Fr., Thurston HS, Springfield, Ore.)**, who was the top player at Thurston High School last year.

"Justin has impressed me," said Sendelback. "He's an overachiever, and he plays every point to the death."

George Fox is a second-year member of the Northwest Conference of Independent Colleges and holds dual national affiliation with the National Association of Intercollegiate Athletics (NAIA) and the National Collegiate Athletic Association (NCAA) Division III.



Mark Sendelback, a former varsity tennis player at the University of Oregon, guides George Fox men's tennis into its second year.

He started the George Fox program last season after serving as varsity girls' tennis coach at Glencoe High School in

1994-95. In 1993, he served as an assistant for the same program. His coaching experience also includes a stint as assistant coach of the varsity boys' tennis team at Churchill High School in 1988.

He has been a tennis instructor at the Hillsboro Park and Recreation Department and spent six years at Peter Boscow Elementary School, Hillsboro, as a physical education specialist.

He currently works in Hillsboro for Young Life, a Christian youth ministry.

In the summer of 1995, he directed an 80-player tennis camp in Hillsboro.

He has served as an assistant tennis professional at Sunset Athletic Club and ran a recreational program for Hillsboro youth from 1991 to 1993.

Sendelback is a 1983 graduate of Glencoe High School, where he lettered three years and advanced to the state tournament in doubles. He graduated from the University of Oregon in 1989 with a bachelor's degree in physical education.

## Peter Bisenius



Sophomore, 5-8  
Milwaukie, Ore.  
Rex Putnam HS

## Rick Cruz



Junior, 5-8  
Hillsboro, Ore.  
Hillsboro HS

## Rob Cruz



Junior, 5-8  
Hillsboro, Ore.  
Hillsboro HS

## Jake Dobson



Freshman, 5-8  
Boise, Idaho  
Greenleaf Friends  
Academy

## Tim Fimbres



Sophomore, 6-4  
Klamath Falls, Ore.  
Klamath Union HS

## Tim Gregory



Junior, 5-3  
Baton Rouge, La.  
Robert E. Lee HS

## Todd Hammans



Freshman, 6-2  
Eugene, Ore.  
Churchill HS

## Luke Lesh



Senior, 6-2  
Salem, Ore.  
North Salem HS

## Andy Lindstrom



Freshman, 5-11  
Portland, Ore.  
Parkrose HS

## Ezra Rice



Sophomore, 6-1  
Newberg, Ore.  
Willamette HS  
(Eugene, Ore.)

## Justin Ubel



Freshman, 5-10  
Springfield, Ore.  
Thurston HS



Tennis professional Bonnie Elliott will guide George Fox's women's tennis team into its second season.

Elliott recently moved from Phoenix, Ariz., where she was named Arizona Tennis Association's 1996 "Tennis Pro of the Year."

From 1993 to 1995, she was an assistant tennis pro at Club Green Meadows in Vancouver, Wash. During the 1994-95 school year, she was head girls and boys tennis coach at Mountain View High School (Vancouver, Wash.), guiding the boys team to a second-place finish in the state.

She is a member of the United States Tennis Association (USTA) and is certified by the United States Professional Tennis Association (USPTA).

"I am excited about Bonnie joining our coaching staff," said Craig Taylor, George Fox athletics director. "She is highly thought of as a teaching professional and a coach. Her contacts in Northwest tennis circles will certainly be an asset as she builds our women's tennis program."

Elliott has specific goals for her first year. "While my role as tennis coach is primarily to strengthen the physical and mental skills needed in tennis competition" she said, "I realize this role is a lot more complicated. Because I have learned over the years the importance of setting goals, challenging myself, and always giving my best effort in whatever I do, offering those lessons to the women will be a part of what I hope to accomplish. I want to get to know each student, tap into what motivates them and challenge them to perform at their best."

Elliott has a lifelong background in tennis. Her father is a tennis pro in Michigan, where he was named 1996 National High School Tennis Coach of the Year. In 1986, she earned a bachelor of science degree from Eastern Michigan University. In addition to coaching, Elliott is activities director at Clackamas River Athletic Club and will run the summer tennis program for the city of Tualatin.

She and her husband, Scott, live in Beaverton.

## Kailea Curtis



Senior, 5-4  
Aurora, Ore.  
North Marion HS

## Amy Gault



Junior, 5-4  
Springfield, Ore.  
Springfield HS

## Jennifer Hamm



Senior, 5-4  
Yakima, Wash.  
West Valley HS

## Shawna Hughes



Sophomore, 5-1  
Edmonds, Wash.  
Edmonds-Woodway HS

## Kimberly Johnson



Junior, 5-6  
Silverdale, Wash.  
King's West HS

## Sarah Johnson



Sophomore, 5-11  
Harrogate, England  
The Mount School

## Kaylee McComb



Freshman, 5-3  
Shelton, Wash.  
Shelton HS

## Rachel McComb



Freshman, 5-1  
Shelton, Wash.  
Shelton HS

## Wendy Mueller



Freshman, 5-3  
Eugene, Ore.  
Sheldon HS

## Jane True



Freshman, 5-3  
Coeur d'Alene, Idaho  
Lake City HS

## Shelly Yonemura



Freshman, 5-3  
Redmond, Wash.  
Redmond HS

# 1997 TENNIS SCHEDULE

## MEN'S TENNIS

### FEBRUARY

Fri-Sat	21-22	at Southern Oregon Tournament	3:00
Thur	27	at Lewis & Clark*	3:00
Fri-Sat	28-1	at Puget Sound Tournament	3:00

### MARCH

Tue	18	at Linfield*	3:00
Wed	19	at Pacific*	3:30
Tue	25	<b>LEWIS &amp; CLARK*</b>	3:00

### APRIL

Tue	1	<b>LINFIELD*</b>	3:00
Sat	5	<b>PUGET SOUND*</b>	2:30
Tue	8	<b>PACIFIC*</b>	3:30
Fri	11	at Whitman*	2:00
Sat	12	at Pacific Lutheran*	3:00
Sat	19	<b>WHITWORTH*</b>	9:00
Tue	22	at Willamette*	3:00
Fri-Sat	25-26	NCIC Tournament (Forest Grove, Ore.)	9:00

## WOMEN'S TENNIS

### FEBRUARY

Thur	20	at Lewis & Clark*	3:30
Fri-Sat	21-22	at Southern Oregon Tournament	3:00
Fri-Sat	28-1	at Puget Sound Tournament	3:00

### MARCH

Tue	4	at Willamette*	3:30
Wed	5	at Linfield*	3:00
Fri	7	at Pacific Lutheran*	3:30
Wed	12	<b>PACIFIC*</b>	3:00
Thur	20	<b>WILLAMETTE*</b>	3:30

### APRIL

Wed	2	<b>LEWIS &amp; CLARK</b>	3:30
Fri	4	<b>PUGET SOUND*</b>	3:00
Sat	5	<b>WHITWORTH*</b>	10:00
Fri	11	<b>MILLS COLLEGE</b>	3:00
Thur	17	<b>LINFIELD*</b>	3:00
Fri	18	at Pacific*	3:30
Sat	19	at Whitman*	10:00
Fri-Sat	25-26	NCIC Tournament (Tri-Cities, Wash.)	9:00

*Home matches in bold caps. \*Conference matches.  
Home matches played on George Fox University Tennis Courts.*

