

2003

### 2003 Media Guide

George Fox University Archives

Follow this and additional works at: [https://digitalcommons.georgefox.edu/athletics\\_womentennis](https://digitalcommons.georgefox.edu/athletics_womentennis)

---

#### Recommended Citation

George Fox University Archives, "2003 Media Guide" (2003). *Women's Tennis*. 25.  
[https://digitalcommons.georgefox.edu/athletics\\_womentennis/25](https://digitalcommons.georgefox.edu/athletics_womentennis/25)

This Media Guide is brought to you for free and open access by the George Fox University Athletics at Digital Commons @ George Fox University. It has been accepted for inclusion in Women's Tennis by an authorized administrator of Digital Commons @ George Fox University. For more information, please contact [arolfe@georgefox.edu](mailto:arolfe@georgefox.edu).

# TENNIS

## A woman with dark hair tied back is in a ready position on a tennis court. She is wearing a white sleeveless shirt and dark blue shorts. She is holding a tennis racket with a black and red frame and yellow strings. She is crouched low to the ground, looking intently at the camera. The background shows a chain-link fence and green foliage.



Rosters

Men's Team	Plays	Ht.	Wt.	Yr./El.	Hometown (Previous School)
Greg Bowman	R	6-0	145	So./Fr.	Auckland, N.Z. (Univ. of Auckland)
Derek Dougherty	R	5-9	150	Jr./Jr.	Springfield, Ore. (Thurston HS)
Joe Gonzales	R	5-11	160	Sr./Sr.	Roseburg, Ore. (Roseburg HS)
Sam Greene	R	5-11	145	Fr./Fr.	Eugene, Ore. (Willamette HS)
Eric Gregg	R	5-11	150	Jr./Fr.	Eugene, Ore. (Univ. of Oregon)
Paul Headley	R	5-7	160	Jr./So.	Newberg, Ore. (Newberg HS)
Jared Jost	R	5-11	165	Jr./So.	Bellingham, Wash. (Sehome HS)
Matt Leininger	R	6-0	160	Fr./Fr.	Monmouth, Ore. (Central HS)
Chris Selid	R	6-0	165	Fr./Fr.	Portland, Ore. (Sunset HS)
Yu Shoji	R	6-0	158	Jr./Jr.	Tokyo, Japan (Portland Christian HS)
Charles Weathers	R	5-10	150	So./So.	Salem, Ore. (McNary HS)

Head Coach: Rick Cruz (5th yr)  
Assistant Coach: Rob Cruz (3rd yr)

Women's Team	Plays	Ht.	Yr./El.	Hometown (Previous School)
Keri Ingraham	R	5-4	Sr./Sr.	Edmonds, Wash. (King's HS)
Kristin Miller	R	5-4	So./So.	Pendleton, Ore. (Pendleton HS)
Mari Oyama	R	5-1	Fr./Fr.	Hilo, Hawaii (Hilo HS)
Amy Peters	R	5-7	So./Fr.	Salem, Ore. (North Salem HS)
Laura Rogers	R	5-4	Fr./Fr.	La Habra, Calif. (Whittier Christian HS)
Stephanie Selid	R	5-5	Jr./Jr.	Portland, Ore. (Sunset HS)
Heidi Stagge	R	5-6	So./So.	East Wenatchee, Wash. (Eastmont HS)
Lisa Trefts	R	5-8	Jr./Jr.	Spokane, Wash. (Shadle Park HS)

Head Coach: Rick Cruz (3rd yr)  
Assistant Coach: Rob Cruz (3rd yr)

George Fox University Tennis Quick Facts

University Information

Location: Newberg, Oregon (18,280)  
Mailing Address: 414 N. Meridian St.  
Newberg, OR 97132  
Founded: 1891  
Denomination: Evangelical Friends (Quaker)  
Enrollment: 2,792  
President: H. David Brandt  
Faculty Athletics Rep: Becky Ankeny  
Switchboard Phone: 503-538-8383  
Web site: www.georgefox.edu

Athletics Information

Nickname: Bruins  
Colors: Navy Blue and Old Gold  
Affiliation (yrs): NCAA Division III (4th)  
Region: West Region  
Conference (yrs): Northwest Conference (8th)  
Director of Athletics: Craig Taylor • 503-554-2911  
Assoc. Dir. of Athletics: Pat Bailey • 503-554-2914  
Athletics Secretary: Patty Findley • 503-554-2910  
Ath. Training Ed. Dir.: Dale Isaak • 503-554-2916  
Head Athletic Trainer: Karen Hostetter • 503-554-2922  
Asst. Athletic Trainer: Byron Shenk • 503-554-2912  
Athletics Fax: 503-554-3864

Coaching Staff

Head Coach: Rick Cruz (5th yr) • 503-554-2923  
Alma Mater: George Fox '98  
GFU Record: 16-44 (.267) 3.5 yrs  
Overall Record: 16-44 (.267) 3.5 yrs  
Assistant Coach: Rob Cruz (3rd yr), George Fox '98

Team Information

Home Courts: GFU Campus Courts  
2002 Overall Record (M): 2-13 (.133)  
2002 NWC Results (M): 2-9 (.182)  
2002 NWC Seeding (M): 1-7 (.125), 8th  
2002 NWC Tournament (M): 0-3, 8th  
2002 Postseason (M): None  
2002 Overall Record (W): 8-9 (.471)  
2002 NWC Results (W): 5-6 (.455)  
2002 NWC Seeding (W): 2-6 (.250), 7th  
2002 NWC Tournament (W): 1-2, 7th  
2002 Postseason (W): None  
Letterwinners Back/Lost: Men 5/3, Women 5/4

Sports Information Office

Sports Info Director: Blair Cash • 503-554-2926  
Home Phone: 503-554-8067  
E-mail: bcash@georgefox.edu  
Student Assistant SIDs: John Felton  
Sarah Troyer, Amber Wentworth  
Sports Info Fax: 503-554-3864  
Sports Hotline: 503-554-3868  
Sports Web site: www.georgefox.edu/athletics

Outlook

Bruins Rely on Depth, Experience

*The Bruins hope a larger men's roster will lead to improved record in 2003 season, while the women hope to build upon the best record in team history*

Men's Team

With the largest number of players in several years turning out for men's tennis, George Fox University coach Rick Cruz hopes his team's increased depth will yield a significantly improved record during the 2003 spring season.

"We have 11 guys, so we have the numbers, but several of them are new and untested," says Cruz, who is entering his 5th season with the Bruins. "I expect several of them to step in and push our veterans, however, giving us some depth that we haven't had in the past couple of years."

The Bruins return 5 lettermen from last year's team that went 2-13 overall and placed 8th in the Northwest Conference Tournament, 3 of whom saw major playing time in the top 6 slots. Heading the list of returnees is First Team All-NWC player **Joe Gonzales** (Sr., Roseburg, Ore.), who was 4-10 at No.1 single and 4-9 at No.1 doubles against the conference's top competition. **Derek Dougherty** (Jr., Springfield, Ore.) was 1-12 at No.3 singles and teamed up with Gonzales in doubles, while **Jared Jost** (So., Bellingham, Wash.) was 1-13 at No.4 singles and 2-12 at No.2 doubles.

Also back are **Paul Headley** (So., Newberg, Ore.) and **Charles Weathers** (So., Salem, Ore.), who saw limited action as freshmen. The Bruins' key loss was Dave Neagle, who was 6-7 at

No.2 singles and 3-10 at No.2 doubles, who was unable to return after a strong freshman season due to financial considerations.



Senior Joe Gonzales, 2002 All-NWC

"We hated to lose Dave; with him at No.2 and the new people we have, we'd have made some major strides," says Cruz, "but we're still going to be an improved team with what we have."

Two newcomers the team will be relying heavily upon are **Matt Leininger** (Fr., Monmouth, Ore.) and **Eric Gregg** (Fr., Eugene, Ore.), who attended the University of Oregon for 2 years before transferring to George Fox but did not play tennis there.

"Matt and Eric will definitely be in our top 6," predicts Cruz, "Matt possibly as high as No.2. They will probably team up at No.2 doubles."

Also expected to challenge for a spot in the top 6 are **Greg Bowman** (Fr., Auckland, New Zealand) and **Sam Greene** (Fr., Eugene, Ore.), the latter a backup goalkeeper on the Bruins' soccer team. They would probably team up with Jost at No.3 doubles.

**Chris Selid** (Fr., Portland, Ore.), whose sister Stephanie plays for the George Fox women's tennis team, is also a candidate for the No.6 position. **Yu Shoji** (Jr., Tokyo, Japan), a regular for the Bruins 2 years ago but ineligible last year, is returning and will factor in the lineup somewhere if he is back in playing shape.

"This is definitely the most depth we've had in a while," admits Cruz. "Whoever is playing in the 7-9 positions could easily fill in for the lower half of the lineup and we would not lose a whole lot. The top half of our order will give us a good chance to win several matches."

Cruz cites Pacific Lutheran as the team to beat in the conference this year, but looks for his team to move up into the middle of the pack.

"We could fit in anywhere from 5th to 8th, depending on how the newcomers adjust to the college level," predicts Cruz. "But we're on our way up; it's just a question of how fast we're going to get there."



## Outlook

### Women's Team

Even a midseason van accident on a road trip to California that sidelined several players for a while could not overshadow the fact that the 2002 George Fox University women's tennis team posted the best record in team history, finishing 8-9 overall. Five players are back from that team, and it will be those experienced veterans whom the Bruins will count on for continued improvement in 2003.

"We have a solid nucleus of returning players," points out head coach Rick Cruz, who is entering his 3rd year as the women's tennis coach while also handling the reins of the men's team. "With the late decision of 2 other players (Anne Robinson and Rebecca Kromer) to sit out this year, our depth isn't quite there, however, so we need good years out of our returning players and for our 3 newcomers to step in quickly."

Leading the Bruins into the new season is **Lisa Trefts** (Jr., Spokane, Wash.), who was 4-11 at No.1 singles and 5-10 at No.1 doubles, earning All-Northwest Conference honors for her

tenacious play against quality competition.

Also returning are **Stephanie Selid** (Jr., Portland, Ore.), who was 5-10 at No.2 singles and 5-10 at No.2 doubles; **Kristin Miller** (So., Pendleton, Ore.), 5-3 at No.3 singles and 3-5 at No.2 doubles; **Heidi Stagge** (So., East Wenatchee, Wash.), 8-6 at No.4 singles and 7-6 at both No.2-3 doubles; and **Keri Ingraham** (Sr., Edmonds, Wash.), 5-6 at No.5-6 singles and 0-4 at No.3 doubles.

Trefts and Selid give the Bruins 2 players at the top who can compete with the best in the conference. Miller was the most seriously injured athlete in last year's accident, which occurred on March 23 on Interstate 5 near Redding, Calif. The school van the team was traveling in blew a tire, but Cruz notes that "she has recovered pretty well from that and is playing some of her best tennis right now."

Stagge is expected to hold on to the No.4 slot, with Ingraham moving up to No.5. Trefts and Miller will pair up at No.1 doubles, with Selid and Stagge at

No.2.

To fill in at No.6 singles and team up with Ingraham at No.3 doubles, Cruz will choose from among **Mari Oyama** (Fr., Hilo, Hawaii), **Laura Rogers** (Fr., La Habra, Calif.), and **Amy Peters** (Fr., Salem, Ore.).

"Mari has some talent, but must work hard and could become the best volleyer and server on the team," notes Cruz. "Laura broke her wrist skiing during the holidays and may not be ready until late February. Amy is a sophomore academically who did not play last year."

Despite the loss of the 2 players who decided not to come out again, Cruz anticipates his team holding its own in the middle of the conference pack, and perhaps reaching double figures in wins.

"We'll have to play well in every match, but we will certainly be competitive with everyone we play," admits Cruz. "After last year, though, I have no doubts we are ready for whatever challenges we will face this season."



Junior Lisa Trefts, 2002 All-NWC

### 2002 Athletes Returning/Leaving

Key Returnees (M)	Cl., Hometown	Records	Honors
Joe Gonzales	Sr., Roseburg, Ore.	4-10 (#1S), 4-9 (#1D)	All-NWC First Team
Derek Dougherty	Jr., Springfield, Ore.	1-12 (#3S), 3-10 (#1D)	
Jared Jost	So., Bellingham, Wash.	1-13 (#4S), 2-12 (#2D)	
Key Losses (M)	Cl., Hometown	Records	Honors
Dave Neagle	So., Canby, Ore.	6-7 (#2S), 3-10 (#2D)	
Nathan Chamberlain	Jr., Dundee, Ore.	0-14 (#5S), 0-13 (#3D)	
Jeremy Johnston	Sr., Medford, Ore.	0-10 (#6S), 0-11 (#3D)	
Key Returnees (W)	Cl., Hometown	Records	Honors
Lisa Trefts	Jr., Spokane, Wash.	4-11 (#1S), 5-10 (#1D)	All-NWC First Team
Stephanie Selid	Jr., Portland, Ore.	5-10 (#2S), 5-10 (#2D)	
Kristin Miller	So., Pendleton, Ore.	5-3 (#3S), 3-5 (#2D)	
Heidi Stagge	So., East Wenatchee, Wash.	8-6 (#4S), 7-6 (#2-3D)	
Keri Ingraham	Sr., Edmonds, Wash.	5-6 (#5-6S), 0-4 (#6D)	
Key Losses (W)	Cl., Hometown	Records	Honors
Anne Robinson	So., Wilson, Wyo.	3-8 (#3S), 3-12 (#1D)	
Rebecca Kromer	Fr., Gresham, Ore.	2-6 (#5-6S), 5-4 (#6D)	

## Men's Team



### Greg Bowman

6-0 • 145 • Freshman  
Auckland, New Zealand  
University of Auckland



### Derek Dougherty

5-9 • 150 • Junior  
Springfield, Oregon  
Thurston HS

**2001:** Singles 4-13 (#1 0-1, #2 4-12); Doubles 5-12 (#1 5-12)  
**2002:** Singles 1-12 (#2 0-1, #3 1-11); Doubles 3-10 (#1 3-9, #2 0-1)  
**Career:** Singles 5-25 (#1 0-1, #2 4-13, #3 1-11)  
Doubles 8-22 (#1 8-21 #2 0-1)



### Joe Gonzales

5-11 • 160 • Senior  
Roseburg, Oregon  
Roseburg HS

2002 All-Northwest Conference  
**2000:** Singles 12-8 (#3 6-7, #4 4-1, #5 2-0)  
Doubles 9-11 (#2 1-4, #3 8-7)  
**2001:** Singles 7-10 (#1 7-9, #2 0-1); Doubles 5-12 (#1 5-12)  
**2002:** Singles 4-10 (#1 4-10); Doubles 4-9 (#1 4-9)  
**Career:** Singles 23-28 (#1 11-19, #2 0-1, #3 6-7, #4 4-1, #5 2-0)  
Doubles 18-32 (#1 9-21, #2 1-4, #3 8-7)



### Sam Greene

5-11 • 145 • Freshman  
Eugene, Oregon  
Willamette HS



### Eric Gregg

5-11 • 150 • Freshman (eligibility)  
Eugene, Oregon  
University of Oregon



### Paul Headley

5-7 • 160 • Sophomore (eligibility)  
Newberg, Oregon  
Newberg HS

**2002:** Singles 0-4 (#6 0-4); Doubles 0-2 (#3 0-2)



### Jared Jost

5-11 • 165 • Sophomore (eligibility)  
Bellingham, Washington  
Sehome HS

**2002:** Singles 1-13 (#3 0-2, #4 1-11); Doubles 2-12 (#2 2-11, #3 0-1)



### Matt Leininger

6-0 • 160 • Freshman  
Monmouth, Oregon  
Central HS



### Chris Selid

6-0 • 165 • Freshman  
Portland, Oregon  
Sunset HS



### Yu Shoji

6-0 • 158 • Junior  
Tokyo, Japan  
Portland Christian HS

**2002:** Singles 0-1 (#6 0-1); Doubles 0-1 (#6 0-1)



### Charles Weathers

5-10 • 150 •  
Salem, Oregon  
McNary HS

**2002:** Singles 0-1 (#6 0-1); Doubles 0-2 (#3 0-2)

Women's Team



Keri Ingraham

5-4 • Senior  
Edmonds, Washington  
King's HS

2000: Singles 0-3 (#6 0-3); Doubles 0-3 (#3 0-3)  
2001: Singles 3-12 (#6 3-12); Doubles 3-12 (#3 3-12)  
2002: Singles 5-6 (#5 1-4, #6 4-2); Doubles 2-4 (#2 1-0, #3 1-4)  
Career: Singles 8-21 (#5 1-4, #6 7-17); Doubles 5-19 (#2 1-0, #3 4-19)



Kristen Miller

5-4 • Sophomore  
Pendleton, Oregon  
Pendleton HS

2002: Singles 5-2 (#2 0-1, #3 5-2); Doubles 3-5 (#1 0-2, #2 3-3)



Mari Oyama

5-1 • Freshman  
Hilo, Hawaii  
Hilo HS



Amy Peters

5-7 • Freshman (eligibility)  
Salem, Oregon  
North Salem HS



Laura Rogers

5-4 • Freshman  
La Habra, California  
Whittier Christian HS



Stephanie Selid

5-5 • Junior  
Portland, Oregon  
Sunset HS

2001: Singles 6-11 (#1 0-1, #2 5-10, #3 1-0); Doubles 3-14 (#2 3-14)  
2002: Singles 5-10 (#2 4-10, #3 1-0)  
Doubles 5-10 (#1 1-3, #2 4-6, #3 0-1)  
Career: Singles 11-21 (#1 0-1, #2 9-20, #3 2-0)  
Doubles 8-24 (#1 1-3, #2 7-20, #3 0-1)



Heidi Stagge

5-6 • Sophomore  
East Wenatchee, Washington  
Eastmont HS

2002: Singles 8-6 (#4 6-6, #5 2-0); Doubles 7-6 (#2 3-5, #3 4-1)



Lisa Trefts

5-8 • Junior  
Spokane, Washington  
Shadle Park HS

2002 All-Northwest Conference  
2001: Singles 7-10 (#1 6-10, #2 1-0); Doubles 5-12 (#1 4-12, #3 1-0)  
2002: Singles 4-11 (#1 4-11); Doubles 5-10 (#1 2-7, #2 3-2, #3 0-1)  
Career: Singles 11-21 (#1 10-21, #2 1-0)  
Doubles 10-22 (#1 6-19, #2 3-2, #3 1-1)

2002 Review

The Trials of Youth

Young men's team struggled vs. top opponents in 2002

Youth and inexperience continued to affect the George Fox men's tennis team as the Bruins struggled to a 2-13 record and finished 8th in the Northwest Conference Tournament. Despite the team's record, No. 1 singles player Joe Gonzales, a junior from Roseburg, Ore., was effective enough with a 4-10 record to earn First Team All-Conference honors. No. 2 player Dave Neagle, a freshman from Canby, Ore., posted the best singles record on the team with a 6-7 mark. The 2 teamed up to go 3-9 at No. 1 doubles. Coach Rick Cruz completed his 4th year as the team's coach with a 16-44 overall record.

Best Season Ever

Bruin women overcome mid-season crash to post best record in team history

A midseason van accident slowed but did not stop the George Fox women's tennis team in their drive toward the best tennis season in Bruin history. The team was 6-3 when the left rear tire of their van blew out along Interstate 5 in northern California on March 23, injuring 7 players and coaches Rick and Rob Cruz. Three players missed the rest of the season and 2 others returned only in time for the Northwest Conference Tournament.

The Bruins went 1-2 to finish 7th in the NWC Tournament, and were 8-9 overall, easily surpassing the record for most wins in a season (3) by last year's women's team. No. 1 player Lisa Trefts, a sophomore from Spokane, Wash., was 4-11 and played well enough to earn First Team All-Conference honors. Sophomore Kristen Miller of Pendleton, Ore., at No. 3 had the team's best record at 5-3 before she was injured, and freshman Heidi Stagge of East Wenatchee, Wash., at No. 4 also posted a winning record at 8-6. Stagge and freshman Rebecca Kromer of Gresham, Ore., were the most effective doubles team, going 4-1 at No. 3. Coach Rick Cruz, after 2 seasons as the women's coach, has a record of 11-24.

Men's Team 2002 Results

Date	Opponent	Location	W/L	Score
2/16	* at Willamette University	Salem, Ore.	L	1-6
2/23	** Lewis & Clark College	Newberg, Ore.	L	1-6
3/1	Seattle University	Newberg, Ore.	L	2-5
3/2	** Linfield College	Newberg, Ore.	L	0-7
3/10	* at Lewis & Clark College	Portland, Ore.	L	1-6
3/21	** at Pacific University	Forest Grove, Ore.	W	4-3
4/6	** University of Puget Sound	Newberg, Ore.	L	0-7
4/6	** Pacific Lutheran University	Newberg, Ore.	L	0-7
4/8	** Willamette University	Newberg, Ore.	L	0-7
4/12	** at Whitworth College	Spokane, Wash.	L	1-6
4/13	** at Whitman College	Walla Walla, Wash.	L	0-7
4/14	* Pacific University	Newberg, Ore.	W	7-0
4/19	# vs. Linfield College	Yakima, Wash.	L	0-7
4/19	# vs. Willamette University	Yakima, Wash.	L	1-6
4/20	# vs. Whitworth College	Yakima, Wash.	L	1-6

Overall: 2-13 (Home 1-6, Road 1-4, Neutral 0-3)  
NWC: 2-9 (Home 1-5, Road 1-4)  
NWC Seeding: 1-7 (Home 0-5, Road 1-2)

Women's Team 2002 Results

Date	Opponent	Location	W/L	Score
2/16	* at Willamette University	Salem, Ore.	L	1-6
2/16	* vs. Willamette University	Portland, Ore.	W	5-4
2/22	** at Lewis & Clark College	Portland, Ore.	L	3-6
3/1	SEATTLE UNIVERSITY	Newberg, Ore.	W	7-2
3/2	ALBERTSON COLLEGE	Newberg, Ore.	W	7-2
3/3	** at Linfield College	McMinnville, Ore.	L	1-8
3/8	** at Willamette University	Salem, Ore.	W	5-4
3/9	** PACIFIC UNIVERSITY	Newberg, Ore.	W	6-1
3/10	* at Lewis & Clark College	Portland, Ore.	W	5-4
3/22	at Southern Oregon University	Ashland, Ore.	L	1-8
4/5	** at University of Puget Sound	Tacoma, Wash.	L	2-7
4/6	** at Pacific Lutheran University	Tacoma, Wash.	L	1-8
4/12	** WHITWORTH COLLEGE	Newberg, Ore.	L	0-9
4/13	** WHITMAN COLLEGE	Newberg, Ore.	L	1-8
4/14	* at Pacific University	Forest Grove, Ore.	W	9-0
4/19	# vs. Linfield College	Yakima, Wash.	L	0-9
4/19	# vs. Pacific Lutheran University	Yakima, Wash.	L	3-6
4/20	# vs. Willamette University	Yakima, Wash.	W	6-3

Overall: 8-9 (Home 3-2, Road 3-5, Neutral 2-2)  
NWC: 5-6 (Home 1-2, Road 3-4, Neutral 1-0)  
NWC Seeding: 2-6 (Home 1-2, Road 1-4)

\* Northwest Conference match  
\*\* Northwest Conference seeding match (NWC teams do not play a full round-robin scheduled; only one match per NWC opponent counts for tournament seeding purposes)  
# Northwest Conference Tournament at Yakima, Wash.



## 2002 Records

## Men's Team 2002 Singles Records

Player	#1	#2	#3	#4	#5	#6	Record
Joe Gonzales	4-10						4-10
Dave Neagle		6-7					6-7
Derek Dougherty		0-1	1-11				1-12
Jared Jost			0-2	1-11			1-13
Nathan Chamberlain				0-2	0-12		0-14
Jeremy Johnston					0-2	0-8	0-10
Paul Headley						0-4	0-4
Charles Weathers						0-1	0-1
Yu Shoji						0-1	0-1
<b>Totals</b>	<b>4-10</b>	<b>6-8</b>	<b>1-13</b>	<b>1-13</b>	<b>0-14</b>	<b>0-14</b>	<b>12-70</b>

## Women's Team 2002 Singles Records

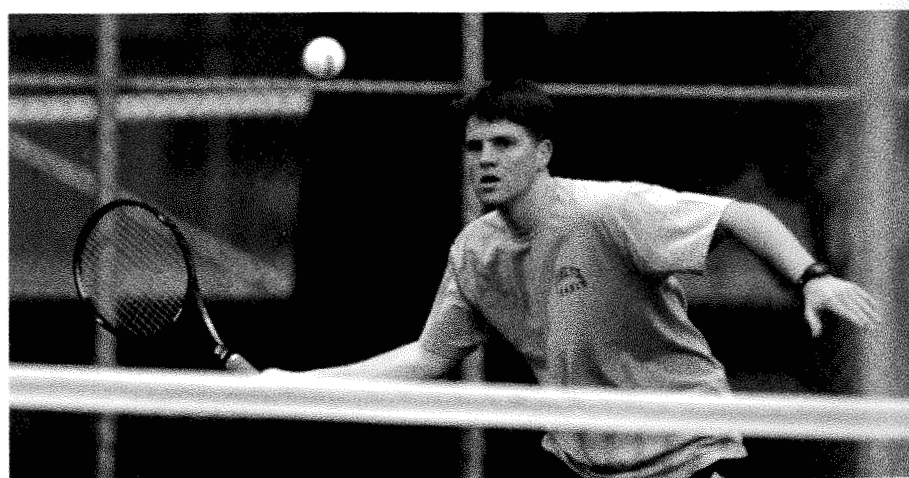
Player	#1	#2	#3	#4	#5	#6	Record
Lisa Trefts	4-11						4-11
Stephanie Selid		4-10	1-0				5-10
Kristin Miller		0-1	5-2				5-3
Anne Robinson			2-5	0-3	1-0		3-8
Heidi Stagge				6-6	2-0		8-6
Keri Ingraham					1-4	4-2	5-6
Rebecca Kromer					1-3	1-3	2-6
Marcy Walter						0-1	0-1
<b>Totals</b>	<b>4-11</b>	<b>4-11</b>	<b>8-7</b>	<b>6-9</b>	<b>5-7</b>	<b>5-6</b>	<b>32-51</b>

## Men's Team 2002 Doubles Records

Player	#1	#2	#3	Record
Gonzalez-Dougherty	3-9			3-9
Neagle-Jost		2-10		2-10
Chamberlain-Johnston			0-9	0-9
Neagle-Gonzales	1-0			1-0
Dougherty-Chamberlain		0-1		0-1
Jost-Chamberlain		0-1		0-1
Weathers-Johnston			0-2	0-2
Chamberlain-Headley			0-2	0-2
Shoji-Jost			0-1	0-1
<b>Totals</b>	<b>4-9</b>	<b>2-12</b>	<b>0-14</b>	<b>5-30</b>

## Women's Team 2002 Doubles Records

Player	#1	#2	#3	Record
Trefts-Robinson	2-7			2-7
Selid-Robinson	1-3			1-3
Miller-Robinson	0-2			0-2
Selid-Miller		3-3		3-3
Trefts-Stagge		2-2		2-2
Selid-Stagge		1-3		1-3
Trefts-Kromer		1-0		1-0
Ingraham-Walter		1-0	1-0	2-0
Stagge-Kromer			4-1	4-1
Trefts-Ingraham			0-1	0-1
Selid-Walter			0-1	0-1
Ingraham-Kromer			0-3	0-3
<b>Totals</b>	<b>3-12</b>	<b>8-8</b>	<b>5-6</b>	<b>16-26</b>

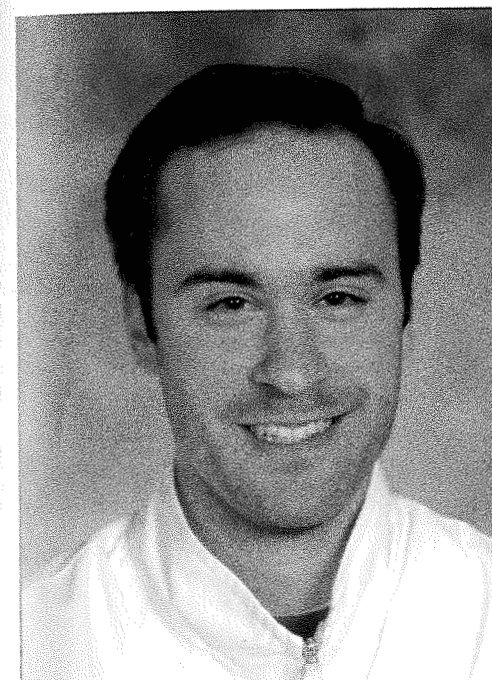


Junior Derek Dougherty

## Coaches

## Head Coach

## Rick Cruz



Rick Cruz, a part of the Bruins tennis program since its inception in 1996, begins his 5th season as the men's tennis coach and his 3rd as the women's tennis coach at George Fox University.

With the men's program, Cruz's teams have posted a 16-44 (.267) record in 3 and a half years. While serving as an assistant coach, he stepped into the breach left when former coach Josh Schweitz resigned in the middle of the 1999 season.

Adding the women's program to his duties in time for the 2001 season, he has directed the Bruins to an 11-24 (.314) record in 2 seasons, including last year's 8-9 mark, the best ever for a George Fox women's team.

As a player for the Bruins, Cruz rotated among the No. 1, 2, and 3 singles positions during the first 3 years of the program (1996-98). He compiled an overall singles record of 15-30 and a doubles record of 11-32, with his best season being his senior year when he went 8-10 in singles and 7-11 in doubles. He graduated from George Fox with a B.A. in business in 1998.

Cruz comes from an athletic family. His identical (mirror) twin brother, Rob, is his assistant coach after also playing tennis at George Fox (1996-98). His younger brother, Ryan, played basketball and tennis for 3 years at George Fox (1998-2000) before transferring to Linfield College for his senior season.

A 1994 graduate of Hillsboro (Ore.) High School, Cruz still resides in Hillsboro and is co-owner of Cold Stone Creamery, a small business with branches in Hillsboro and Clackamas, with his brother Rob.

## Rob Cruz

## Assistant Coach



If there seems to be something familiar about Rob Cruz, it's not surprising. The assistant coach for the men's and women's tennis teams at George Fox University, entering his 3rd year with the programs, is a "mirror twin" brother (identical twins who do most things in reverse) of head coach Rick Cruz!

Cruz was a member of the first Bruins men's tennis team in 1996 and played for 3 years. Playing primarily at Nos. 4 and 5, he posted a career singles record of 9-32 and a doubles mark of 12-32. As a senior, he was 6-10 in singles and 8-10 in doubles. He graduated from George Fox with a B.A. in business in 1998.

Cruz comes from an athletic family. His twin brother, Rick, is in his 5th season as head coach of the Bruins men's tennis program and 3rd as the women's coach. His younger brother, Ryan, played basketball and tennis for 3 years at George Fox (1998-2000) before transferring to Linfield College for his senior season.

Rob assists Rick this year by remaining with either the men's or women's teams for home matches while Rick takes the other team on road trips when the 2 schedules overlap.

Rob is a 1994 graduate of Hillsboro (Ore.) High School, resides in Hillsboro, and is co-owner with his brother Rick of Cold Stone Creamery, a small business with branches in Hillsboro and Clackamas.

## About the University



**G**eorge Fox University, an evangelical Christian liberal arts college, is expanding, both in size and reputation. One of the fastest-growing institutions of higher learning in the United States, George Fox has seen its enrollment more than quadruple in the past 16 years, increasing from 549 in 1986 to a record 2,730 in the spring of 2002.

Since 1986, George Fox has been named one of "America's Best Colleges" 14 times by *U.S. News &*

*University President:*

## H. David Brandt

**D**avid Brandt, George Fox University's 11th president, came to the university in August 1998 after 3 years as president of Tabor College in Hillsboro, Kan.

Brandt has experience at 4 other Christian colleges and describes himself as "a 'lifer' in Christian higher education." He has been vice president and provost at Bethel College in St. Paul, Minn.; dean and vice president for academic affairs at Messiah College in Grantham, Pa.; a physics instructor and

*World Report.* In 2000, George Fox ranked first in academic reputation and second overall among Western regional liberal arts colleges. The magazine also named the university one of the best values among schools in its category.

George Fox offers unique programs to its students. Every incoming freshman is given a computer to use and keep upon graduation. When students reach their 3rd year, they are eligible for the Juniors Abroad program, in which the university pays

chairman of the Division of Natural Science and Mathematics at Gordon College in Wenham, Mass.; and a physics instructor at Wheaton (Ill.) College.

Brandt did his undergraduate work in physics at Wheaton. He earned a master of science degree in physics in 1962 and a doctorate in physics in 1971, both at the University of Oklahoma.



Brandt taught physics 1962-63 at the University of Omaha in Nebraska; was a demonstrator in physics at Brock University in St. Catharines, Ontario, Canada, 1968-69; was an engineer at Raytheon Co. in Sudbury, Mass., between 1972 and

1974; and was a consulting engineer for International Telephone and Telegraph Corp. in Roanoke, Va., between 1975 and 1977. His research there on fiber optics resulted in 2 patent applications.

transportation costs for an overseas study tour.

The school's history began in 1885, when Willamette Valley Quaker settlers established Pacific Academy. It was during those early days that George Fox's most prominent alumnus — Herbert Hoover, who later became the 31st president of the United States — attended the school.

The college division was organized in 1891 to provide more advanced instruction, and the name was changed to Pacific College. In 1949, because of the many schools in the West with "Pacific" in their titles, another change was made, this time to George Fox College, honoring the founder of the Friends (Quaker) church.

In 1996, with the addition of Western Evangelical Seminary, George Fox became a university, offering students a Christ-centered education and the choice of more than 40 undergraduate majors and more than a dozen graduate degrees. On Jan. 1, 2000, the seminary was renamed George Fox Evangelical Seminary.

George Fox is located in Newberg, Oregon (pop. 18,280), 25 miles southwest of Portland, the state's largest metropolitan center of 1.7 million, and 32 miles north of Salem, the state capital.



## George Fox University Bruin Athletics



**I**ntercollegiate athletics are an important part of George Fox University, home to one of the Northwest's most successful small-college sports programs. Winning programs, of course, are accompanied by a proper balance between academics and athletics. Accordingly, George Fox teams are members of the Northwest Conference and compete in Division III of the National Collegiate Athletic Association, in which need and academic ability, not athleticism, determine scholarships and financial aid.

**A**t George Fox University, student-athletes compete for conference and national titles at a Christ-centered university where professors and

coaches help them grow in mind, body, and spirit. Intercollegiate athletics competition provides for practical application of what is learned in the classroom and at practice. At George Fox, the values of athletics are integrated with the goals of Christian higher education in a process that includes

- Physical conditioning
- Managing emotions
- Courage
- Teamwork
- Cooperation
- Graciousness in winning and losing

**T**he university fields teams in 13 varsity sports, 7 for women (volleyball, soccer, cross country, basketball, softball, tennis, and track

and field) and 6 for men (soccer, cross country, basketball, baseball, tennis, and track and field). More than 15 percent of George Fox's traditional undergraduate students participate in these sports. Their records over the years serve as shining testimonies to the administration's conviction that an institution can play for the glory of God, follow the rules and ethics of its governing organizations, and be successful on the fields and courts of competition at the same time. Consider the growing legacy:

- George Fox has earned district or conference titles 15 times in 8 different sports during the last decade.
- George Fox athletes have earned more than 300 All-America and All-America Scholar-Athlete honors.
- Seven of the 11 coaches on staff have been named Coach of the Year at various levels a total of 35 times.
- George Fox coaches have held their positions for an average of almost 9 years, and together have accumulated more than 1,300 collegiate wins.

For more information about intercollegiate athletics at George Fox University, one of the premier places to play at the Division III level, contact the Department of Athletics at 503-554-2910, or via the Internet at [www.georgefox.edu/athletics](http://www.georgefox.edu/athletics).

The 2003 George Fox University Tennis Media Guide was produced by the Office Marketing and Communications, Rick Johnsen, executive director. Writer and Editor: Blair Cash, sports information director. Writing assistants: Sports information student assistants John Felton, Sarah Troyer, Amber Wentworth. Proofreading: Connie Ganz. Design and Layout: Colin Miller, Rebecca Wages. Photography: Anita Cirulis, Kirk Hirota. Printing: Lynx Communication Group Inc., Salem, Ore.



# 2003 Tennis

## Men's Team

### January

31 Fri.	vs. California Institute of Technology (at L&C)	Portland, Ore.	TBA
---------	---	----------------	-----

### February

15 Sat.	* at Pacific University	Forest Grove, Ore.	10:00 a.m.
22 Sat.	* at Lewis & Clark College	Portland, Ore.	10:00 a.m.
28 Fri.	* at Pacific Lutheran University	Tacoma, Wash.	2:00 p.m.
29 Sat.	* at University of Puget Sound	Tacoma, Wash.	10:00 a.m.

### March

7 Fri.	* <b>Linfield College</b>	<b>Newberg, Ore.</b>	<b>TBA</b>
9 Sun.	* <b>Willamette University</b>	<b>Newberg, Ore.</b>	<b>1:00 p.m.</b>
15 Sat.	* <b>Lewis &amp; Clark College</b>	<b>Newberg, Ore.</b>	<b>10:00 a.m.</b>
16 Sun.	* <b>Pacific University</b>	<b>Newberg, Ore.</b>	<b>1:00 p.m.</b>
25 Tue.	at Occidental College	Los Angeles, Calif.	3:00 p.m.

### April

4 Fri.	* at Whitworth College	Spokane, Wash.	5:00 p.m.
5 Sat.	* at Whitman College	Walla Walla, Wash.	TBA
11 Fri.	* <b>Pacific Lutheran University</b>	<b>Newberg, Ore.</b>	<b>TBA</b>
12 Sat.	* <b>University of Puget Sound</b>	<b>Newberg, Ore.</b>	<b>10:00 a.m.</b>
18-19 Fri.-Sat.	Northwest Conference Tournament	Yakima, Wash.	TBA

## Women's Team

### February

1 Sat.	vs. California Institute of Technology (at L&C)	Portland, Ore.	TBA
14 Fri.	vs. S. Oregon University (at Tualatin Hills)	Beaverton, Ore.	6:00 p.m.
15 Sat.	* <b>Pacific University</b>	<b>Newberg, Ore.</b>	<b>10:00 a.m.</b>
22 Sat.	* <b>Lewis &amp; Clark College</b>	<b>Newberg, Ore.</b>	<b>10:00 a.m.</b>
28 Fri.	* <b>Pacific Lutheran University</b>	<b>Newberg, Ore.</b>	<b>2:00 p.m.</b>
29 Sat.	* <b>University of Puget Sound</b>	<b>Newberg, Ore.</b>	<b>10:00 a.m.</b>

### March

7 Fri.	* at Linfield College	McMinnville, Ore.	TBA
9 Sun.	* at Willamette University	Salem, Ore.	1:00 p.m.
15 Sat.	* at Lewis & Clark College	Portland, Ore.	10:00 a.m.
16 Sun.	* at Pacific University	Forest Grove, Ore.	1:00 p.m.
24 Mon.	at Occidental College	Los Angeles, Calif.	3:00 p.m.

### April

4 Fri.	* <b>Whitworth College</b>	<b>Newberg, Ore.</b>	<b>4:00 p.m.</b>
5 Sat.	* <b>Whitman College</b>	<b>Newberg, Ore.</b>	<b>3:30 p.m.</b>
11 Fri.	* at Pacific Lutheran University	Tacoma, Wash.	3:00 p.m.
12 Sat.	* at University of Puget Sound	Tacoma, Wash.	10:00 a.m.
18-19 Fri.-Sat.	Northwest Conference Tournament	Yakima, Wash.	TBA

\* Northwest Conference match • Home matches in **bold type**

All home matches played at campus courts • All times Pacific and subject to change

Athletics Dept. 503-554-2910 • Sport Info. 503-554-2926 • Sports Hotline 503-554-3868

Web site: [www.georgefox.edu/athletics](http://www.georgefox.edu/athletics)