

1986

1986 Media Guide

George Fox University Archives

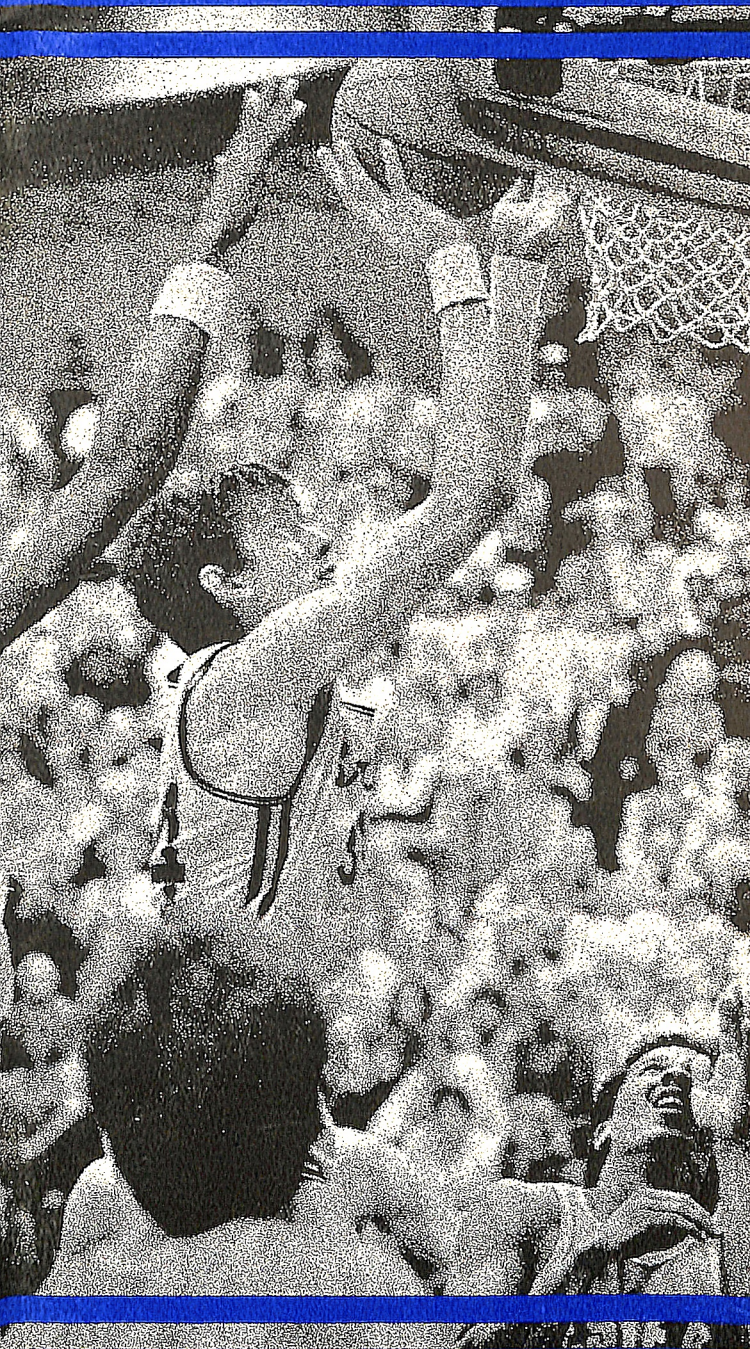
Follow this and additional works at: https://digitalcommons.georgefox.edu/athletics_menbasketball

Recommended Citation

George Fox University Archives, "1986 Media Guide" (1986). *Men's Basketball*. 118.
https://digitalcommons.georgefox.edu/athletics_menbasketball/118

This Media Guide is brought to you for free and open access by the George Fox University Athletics at Digital Commons @ George Fox University. It has been accepted for inclusion in Men's Basketball by an authorized administrator of Digital Commons @ George Fox University. For more information, please contact arolfe@georgefox.edu.

George Fox College BRUINS



Basketball Media Guide '86-87

FINGERTIP FACTS

College Location	Newberg, Oregon 97132 (11,000 pop.)
Founded	1891
Denomination Affiliation	Friends (Quaker)
Enrollment	575
Athletic Affiliations	Independent - NAIA, NCCAA
Home Court	Miller Gymnasium, Wheeler Sports Center
Seating Capacity	2,500
Colors	Old Gold, Navy Blue
Nickname	Bruins
College President	Dr. Edward Stevens
Athletic Director	Paul Berry
Basketball Coach	Mark Vernon
Sports Information Director	Barry Hubbell

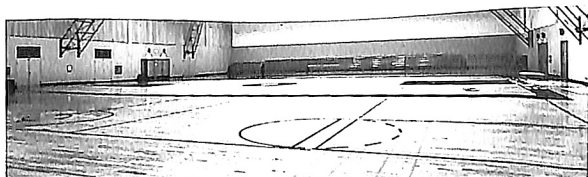
HOW TO REACH US . . .

(College Switchboard 503/538-8383)

Basketball Coach Mark Vernon	ext. 254	Home 538-1755
Baseball/Soccer Coach Paul Berry	ext. 255	Home 538-0951
Track/Cross Country Coach Rich Allen	ext. 252	Home 538-9875
Women's Basketball/Softball Coach Craig Taylor . . .	ext. 250	Home 472-9694
Women's Volleyball/ Assistant Men's Basketball Coach Steve Grant	ext. 253	Home 363-7758
Sports Information Director Barry Hubbell	ext. 220	Home 538-4332

INDEX

Athletics at George Fox	2
Coach Mark Vernon	16
Coaching Assistant Steve Grant	17
Coaches' Records	34
George Fox College	1
Highlights of 1985-86	6
History of GFC Basketball	8
Honored Bruins	32
Hosts/Hostesses	19
JV Team, Schedule, Coach Matt Mount	20-21
Media Services	Inside Back Cover
Miller Gym Records	33
Most Valuable Players	33
NAIA	4
NAIA District 2	5
Nickname Bruin	2
Opponent Information	40-44
Outlook for 1986-87	9
Player Biographicals	10-15
Rally Squad	19
Records	24-26
Roster of Players	22-23
Season Scores	35-39
Schedule 1986-87	Back Cover
Staff	18
Statistics, 1985-86 Accumulative	7
Top 10 Player Records	27-29
Value Point System	31
Wheeler Sports Center	3
Year-By-Year Leaders	30



George Fox College is in its tenth year in the Coleman H. Wheeler Center for Sports and Physical Education. Completed in June 1977, the \$2.7 million, 55,000-square-foot complex is the College's largest building. It contains the James and Lila Miller Gymnasium, the Bruin home court.

The sports center was designed by noted architect Pietro Beluschchi, with a wooded canyon setting chosen as the center's location. The building features wood products and a large window area overlooking the adjacent natural terrain.

Three times larger than Hester Gymnasium, which it replaced, the Wheeler Center features a 116 x 174-foot gymnasium with three basketball courts and seating for 2,500 spectators. The gymnasium ceilings are 32 feet over the hardwood maple floor. The gym provides three volleyball courts and ten badminton courts.

The building is entered on two levels – ground level on the east side through the nine doors for the general public and after crossing a 200-foot bridge; and on the second floor on the west side for campus personnel. There is a two-floor lobby featuring oak parquet floors.

Contained on the upper level are athletic administration and faculty offices, staff room, and class, weight, and multipurpose rooms.

The lower level contains a concession area and ticket sales area, dressing rooms, team rooms, laundry, equipment-issuing room, and storage space. An east wing of the building houses two handball courts.

The building is named for long-time Oregon lumberman Coleman H. Wheeler, former chairman of the board of Willamette Industries. The gymnasium is named for board member James Miller and his wife, Lila. He is the former president of Cascadia Lumber Co. The building was dedicated Oct. 17, 1977.

GFC ATHLETICS

Intercollegiate athletics is an integral part of the overall education program at George Fox. Men's varsity athletic teams represent the College in baseball, basketball, track, cross country, and soccer. Women students compete in volleyball, basketball, track, softball, and cross country.

George Fox College competes as an independent on the varsity level. Its schedules are coordinated with the Northwest Conference and with other independents in the Northwest. George Fox is a member of the National Association of Intercollegiate Athletics (NAIA), District 2, and the National Christian College Athletic Association, Region 8.

For students not participating in the varsity program, GFC has a complete intramural program including flag football, basketball, volleyball, softball, racquetball, and tennis.

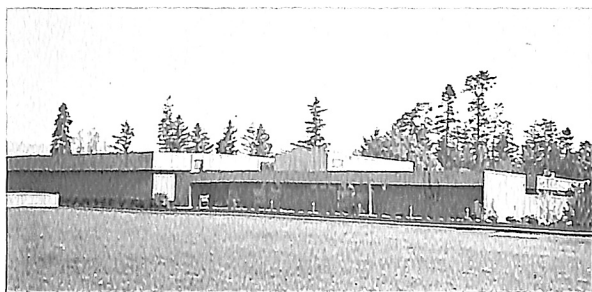
Athletic facilities include the Coleman H. Wheeler Center for Sports and Physical Education; Colcord Field, which includes a football/soccer field and new all-weather rubberized track; and tennis courts. A new athletic field complex containing baseball diamond, two softball fields, soccer field, and archery range was completed in 1981.

Wheeler Center, completed in 1977 in a \$2.7 million project,	
Track/Cross Country Coach Rich Allen	ext. 252
	Home 538-9875
Women's Basketball/Softball Coach Craig Taylor . . .	ext. 250
	Home 472-9694
Women's Volleyball/	
Assistant Men's Basketball Coach Steve Grant	ext. 253
	Home 363-7758
Sports Information Director Barry Hubbell	ext. 220
	Home 538-4332

INDEX

Athletics at George Fox	2
Coach Mark Vernon	16
Coaching Assistant Steve Grant	17
Coaches' Records	34
George Fox College	1
Highlights of 1985-86	6
History of GFC Basketball	8
Honored Bruins	32
Hosts/Hostesses	19
JV Team, Schedule, Coach Matt Mount	20-21
Media Services	Inside Back Cover
Miller Gym Records	33
Most Valuable Players	33
NAIA	4
NAIA District 2	5
Nickname Bruin	2
Opponent Information	40-44
Outlook for 1986-87	9
Player Biographicals	10-15
Rally Squad	19
Records	24-26
Roster of Players	22-23
Season Scores	35-39
Schedule 1986-87	Back Cover
Staff	18
Statistics, 1985-86 Accumulative	7
Top 10 Player Records	27-29
Value Point System	31
Wheeler Sports Center	3
Year-By-Year Leaders	30

THIS IS WHERE THE GAME IS PLAYED



George Fox College is in its tenth year in the Coleman H. Wheeler Center for Sports and Physical Education. Completed in June 1977, the \$2.7 million, 55,000-square-foot complex is the College's largest building. It contains the James and Lila Miller Gymnasium, the Bruin home court.

The sports center was designed by noted architect Pietro Beluschchi, with a wooded canyon setting chosen as the center's location. The building features wood products and a large window area overlooking the adjacent natural terrain.

Three times larger than Hester Gymnasium, which it replaced, the Wheeler Center features a 116 x 174-foot gymnasium with three basketball courts and seating for 2,500 spectators. The gymnasium ceilings are 32 feet over the hardwood maple floor. The gym provides three volleyball courts and ten badminton courts.

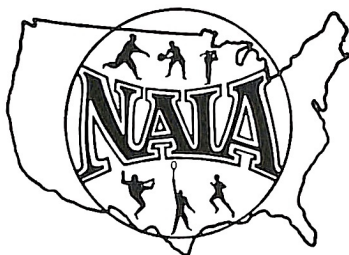
The building is entered on two levels – ground level on the east side through the nine doors for the general public and after crossing a 200-foot bridge; and on the second floor on the west side for campus personnel. There is a two-floor lobby featuring oak parquet floors.

Contained on the upper level are athletic administration and faculty offices, staff room, and class, weight, and multipurpose rooms.

The lower level contains a concession area and ticket sales area, dressing rooms, team rooms, laundry, equipment-issuing room, and storage space. An east wing of the building houses two handball courts.

The building is named for long-time Oregon lumberman Coleman H. Wheeler, former chairman of the board of Willamette Industries. The gymnasium is named for board member James Miller and his wife, Lila. He is the former president of Cascadia Lumber Co. The building was dedicated Oct. 17, 1977.

BRUINS COMPETE IN NAIA



The National Association of Intercollegiate Athletics (NAIA) is a completely autonomous association that administers programs leading to national championships in 11 events for nearly 500 accredited four-year colleges and universities in 32 geographical districts spread over the 50 states and Canada.

Established in 1940 as the National Association of Intercollegiate Basketball the NAIB evolved from the institution of a "National Small College Basketball Tournament" that was inaugurated in 1937. In 1952, the NAIB expanded to include tennis, outdoor track, and golf, and that year the organization was renamed the NAIA.

Since that time the NAIA has further enlarged to encompass football (two divisions were formed in 1970), cross country, baseball, and swimming, which were added to the NAIA championship program in 1956, wrestling (1958), soccer (1959), and indoor track (1966). In August of 1980 the NAIA, after a two-year study, initiated championships for women in the newly organized NAIA Women's Division. Ten championships are offered.

NAIA national headquarters and staff are located in Kansas City, Missouri. The NAIA is governed by two bodies. The Council of Presidents, composed of one president from each district, is responsible for fiscal matters, academic standards, and supervision of the national staff. The 10-person Executive Committee, elected by the membership, is responsible for organizing championship events and overseeing the committees and associations.

Eligibility rules within the NAIA govern all play in all sports recognized by the Association, not just post-season play. All eligibility guidelines must be adhered to by all members, including those holding dual affiliation with other associations.

The NAIA clearly outlines its own responsibilities and those of its members: a sound athletic program, administered and controlled by those responsible for the administration of the college or university. The NAIA's basic premise is that the athletic program is a basic component of the overall general educational process, and not an entity apart.

Member institutions must conduct their intercollegiate athletic programs to the standards of the regulatory Association in which they hold memberships, and the NAIA. They must pay the annual membership dues and be in support of the policies of the Association. Where institutional rules and standards are more strict than those of the regulatory group or the NAIA, those rules and standards of the institution are recognized and supported by the NAIA.

NAIA DISTRICT 2

George Fox College men's athletic teams compete in District 2 of the National Association of Intercollegiate Athletics (NAIA). Fifteen teams currently make up the district, all but two within the state of Oregon.

This is the second year of a major change in district membership and organization. Four Hawaii teams have dropped from District 2 to form their own new district. And, in basketball, divisions have been created involving all 15 colleges, with organization into east and west divisions.

Members of the East Division are College of Idaho, Columbia Christian College, Concordia College, Eastern Oregon State College, George Fox College, Northwest Nazarene College, and Western Oregon State College.

West Division members are Lewis and Clark College, Linfield College, Oregon Institute of Technology, Pacific University, Southern Oregon State College, Warner Pacific College, Western Baptist College, and Willamette University.

The new alignment, established by district basketball coaches, creates a new way to reach post-season playoffs for the right to represent NAIA District 2 in the national NAIA championships.

With the changes the previous, but somewhat complicated, "Sempert System" of team evaluation is abandoned. Now, the top four teams in each division are cross-seeded with the top four from the other division. The top team in each division will play the fourth place squad in the other. Number two in one division will play number three in the other. Standings within each division will be based solely upon the record with the other teams in the division. If there is a tie, results of competition between those schools involved will be considered. If there is still a tie then overall NAIA District 2 records will be used to determine ranking. Host teams for the playoffs will be those with the best records.

George Fox College has been in the NAIA District 2 playoffs 12 of the last 16 years.

THE BRUIN DISTRICT PLAY-OFF RECORD

1970-71	Willamette University (lost 103-69)
1971-72	Willamette University (lost 69-60)
1972-73	Linfield College (won 95-88)
	Pacific University (won 68-67) (District title)
	Defiance (Ohio) College (lost 86-62) (NAIA national championships)
1973-74	Pacific University (won 92-72)
	Oregon Institute of Technology (lost 55-54)
1974-75	Oregon Institute of Technology (lost 72-56)
1976-77	University of Hawaii - Hilo (lost 85-79)
1977-78	Oregon Institute of Technology (lost 79-65)
1979-80	Oregon Institute of Technology (lost 69-67)
1980-81	Northwest Nazarene (lost 61-58)
1983-84	Western Oregon State (lost 86-72)
1984-85	Western Baptist (won 50-47)
	Western Oregon State (won 71-57)
	College of Idaho (lost 61-53)
1985-86	Warner Pacific (won 66-56)
	Oregon Institute of Technology (lost 76-67)

1985-86 HIGHLIGHTS

With a 21-10 record, the 1985-86 basketball Bruins produced the second best mark ever in 21 years of George Fox NAIA competition. They also left behind another second best: 20 new school records. It was the first time GFC has recorded back-to-back 20-plus season marks, coming in the wake of a record-setting 27-7 the year before. That makes a winning rate of 74 percent for Bruin Coach Mark Vernon in those two seasons.

He guided the Bruins last year to third place in NAIA District 2 and their third straight district playoff appearance, where GFC lost 76-67 to host Oregon Tech in a semi-final game.

The 1985-86 Bruins scored at a record pace of 10.3 points a game more than opponents. The previous best margin was 8.1. The 1,052 field goals made were 40 more than the previous record. Five times, a new record, the Bruins went over the century mark in scoring, including a new school record 113 points in a game with Concordia. Twice the team established a school record for steals in a game when 26 were recorded.

On their own floor, the Bruins were 10-1 to move to a 25-1 in the last two years in Miller Gym. On the road it was 11-9. In District 2 competition the record was 18-7; out of district it was 3-3. With Northwest Conference foes it was a 3-2 record, with Evergreen Conference opponents it was 5-1, and with district independent College of Idaho, the district champion, it was 1-1.

Although it was a team effort, it was a season in which much of the attention went to one player: All-American Kenny Stone. The 6-6 junior forward was named NAIA District 2 Player of the Year and ran away in the voting for Little All-Northwest honors. The figures were there – he led the district in rebounding (10.6) and was third in scoring (19.7) for the best combination in the district. He led the Northwest in blocked shots with 112, a 3.7 per game average. He set five school records. Junior forward Curtis Kimbrough notched four GFC records, all for steals. His 108 was best in the Northwest. Both he and junior guard Toby Long (second in GFC scoring at 13.7) won district honorable mention designation.

Senior guard Al Vasey established a record for the most games ever played by a Bruin when he suited up for his 118th in the final game. He also set the new GFC career assist record at 520. The other senior guard, Les Harrison, set the new career assist average record at 4.80 on the strength of his 5.2 average during his last season.

1985-86 STATISTICAL HIGHLIGHTS

Longest Win String – 8 games

Longest Loss String – 2

Most Points Scored – 113 vs. Concordia (69) in Salem

Fewest Points Scored – 61 vs. Western (65) in Salem

Most Points Allowed – 93 vs. University of Puget Sound in Tacoma

Fewest Points Allowed – 53 vs. Columbia Christian in Portland

Largest Margin of Victory – 44 (113-69) vs. Concordia in Salem; (97-53) vs. Columbia Christian in Portland

Largest Margin of Defeat – 17 (93-76) vs. University of Puget Sound in Tacoma

Most Individual Points – 34 Kenny Stone vs. University of Puget Sound in Tacoma

Most Individual Rebounds – 18 Kenny Stone vs. Western Oregon in Newberg

1985-86 ACCUMULATIVE STATISTICS

Player	G	FIELD GOALS			FREE THROWS			REBOUNDS				PF	BLKS	STL	AST	AST AVE	TP	PPG	TO
		SM	SA	%	SM	SA	%	O	D	T	RPG								
Harrison, Les	27	67	151	.444	33	48	.688	20	30	50	1.9	82	5	88	139	5.2	167	6.2	101
Kimbrough, Curtis	31	115	274	.420	44	63	.698	77	154	231	7.5	64	13	108	163	5.3	274	8.8	113
Lautenbach, Eric	31	158	295	.536	80	99	.808	46	89	135	4.4	69	2	23	37	1.2	396	12.8	77
Lee, David	22	28	63	.444	18	30	.600	17	27	44	2.0	29	8	9	17	0.8	74	3.4	20
Long, Toby	31	180	330	.545	65	91	.714	39	41	80	2.6	76	7	62	86	2.8	425	13.7	60
Martin, Rich	13	3	17	.176	6	11	.545	4	7	11	0.9	6	1	0	3	0.2	12	0.9	4
Peterson, Brent	21	42	74	.568	26	33	.788	14	18	32	1.5	33	3	11	42	2.0	110	5.2	39
Redmond, Mike	30	160	295	.542	54	67	.806	74	95	169	5.6	80	10	19	31	1.1	374	12.5	37
Samodurov, Cliff	22	8	24	.333	15	21	.714	4	5	9	0.4	18	1	5	19	0.9	31	1.4	11
Selitto, Gino	4	5	14	.357	4	5	.800	1	2	3	0.4	2	0	0	1	0.3	14	3.5	4
Stone, Kenny	30	233	417	.559	126	196	.643	108	210	318	10.6	82	112	65	72	2.4	592	19.7	98
Vasey, Al	28	45	93	.484	13	18	.722	10	36	46	1.6	42	6	29	86	3.1	103	3.7	31
White, Tim	17	8	19	.421	3	10	.300	13	16	29	1.7	10	9	0	2	0.1	19	1.1	2
TEAM REBOUNDS								118	39	157	5.1								
GFC	31	1052	2067	.509	487	692	.704	545	769	1314	42.4	594	177	418	698	22.5	2591	83.6	596
✓ OPPONENTS	31	906	1964	.461	459	673	.682	492	686	1178	38.0	604	72	247	531	17.1	2271	73.3	576

A LOOK AT THE PAST



The game of basketball was invented by Dr. James Naismith in 1891, and it took just seven years for it to be brought to George Fox College (then called Pacific College).

College board member and community leader T. W. Hester and others first saw the game played at the Portland YMCA. They were captivated by the new game and secured a ball, which they brought back to the College. The first exhibition game was played shortly thereafter, in the winter of 1898, and the first site was the third floor of the old Commercial Hotel on North Main Street because the College had no adequate space for the new sport.

The first gymnasium on the campus was the upper part of one wing of an old academy building (Hoover Hall), built in 1885 and torn down in the mid-1950s. A one-room wood gymnasium building was constructed in 1916 and served until 1946, when the College opened Hester Gymnasium, a concrete block structure built partly by student/faculty labor at a cost of \$40,000. The building, with a single hemlock playing floor and seating for 1,100, served through the 1976-77 season with opening of Wheeler Center.

College athletic affiliation in men's basketball over those years has gone from independent status to membership in the old Willamette Christian College Conference, the Metropolitan Conference, the Oregon Collegiate Conference, and back again to the present status as a major small college independent member of NAIA District 2 (joined in 1965). In 1973 George Fox was the district champion and has been in the district playoffs 12 of the last 16 years.

"Our greatest basketball year," according to a College publication, "The First Fifty Years" (published in 1941), "was reached in 1917 when Pacific College won the [Willamette Valley] league championship and defeated Oregon State College 34-25." There have, of course, been many significant wins, seasons, and players throughout the last 89 years. Much of that history, however, has been lost because of the lack of available information and incomplete records prior to NAIA membership in 1965. Highlights and records since that time appear on the following pages. Pre-NAIA statistics available show these marks: Bill Hopper with a 42-point game and 1,737 career points in 1954-1958, and Cub Grimm in 1952-53 season with a 21.0 game average, and 26 free throws in a contest with the Oregon Medical School in 1953.

HOW IT LOOKS FOR 1986-87

In the last two years George Fox College has produced the best two basketball seasons in the College's NAIA history, winning 48 games with just 17 losses. The winning rate is 74 percent.

Now Bruin Coach Mark Vernon says he's got "the most talented team I've ever coached – and the deepest." On that assessment, the Bruins could – and should – be in for a very good year. Some might call it a great, even excellent, year.

But despite the acknowledged talent and admitting his team may be one of the favored in the district title chase, Vernon also is a realist. "Our entire league has improved and it will be very difficult just to host a game or make the playoffs," he says.

That is one of the intents this year: "Our goal is to host in the playoffs with our ultimate goal of Kansas City," Vernon says. That's where the NAIA national championships are held.

"I feel we are a solid nine deep," says Vernon. "And to win in our district you need depth."

The 1986-87 Bruins will have a good chemistry of outside shooting and strong inside play. And watch for that shooting. The three-point play is a definite option. "Our main strength will be our shooting, and our running game," says the fifth-year Bruin boss. Last season GFC was the second highest scoring team in the Northwest and the Bruins are expected to remain in that category.

The Bruins, of course, following the Vernon tradition, will feature intense pressure defense. It will be a fast-breaking squad that makes use of excellent passing that involves some outstanding talent in assists.

As Vernon notes, the Bruins do have talent – in all categories. It all starts with All-American Kenny Stone, the district's and the Northwest's best small college player. Stone won every possible award there was to win a year ago as he finished first in the district in rebounding (10.6) and third in scoring (19.7) for the best combination finish. He led the Northwest in blocked shots with 112, 3.2 a game. His superlatives are listed on pages 10 and 32.

But, it's not a one-man effort. To three other returning starters, Vernon has added two outstanding recruits who will "give us much added scoring and rebounding power," according to Vernon. By name, they are Washington Community College Region 2 MVP Eric Swanson, and previous District 2 All-Star Dan Newman, who has been playing with the All-Army Europe team after two years at Concordia.

They join four seniors: Stone, forward Curtis Kimbrough who led the Northwest in steals last season, guard Toby Long who was second in GFC scoring, and forward Mike Redmond, the district's 10th leading rebounder a year ago.

"I'm looking forward to this year," Vernon says. "I really enjoy the players on the team and the anticipation of a good season."

EXPERIENCE CHART

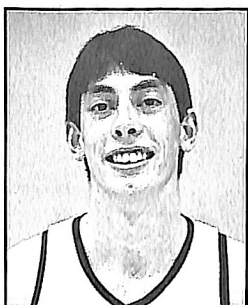
Lettermen Returning: Curtis Kimbrough, Eric Lautenbach, Toby Long, Rich Martin, Brent Peterson, Mike Redmond, Cliff Samodurov, Kenny Stone, Tim White

Starters Returning: Curtis Kimbrough, Toby Long, Mike Redmond, Kenny Stone

Newcomers: Dan Newman, Eric Swanson

By class: Senior – Curtis Kimbrough, Toby Long, Mike Redmond, Kenny Stone; Junior – Eric Lautenbach, Dan Newman, Cliff Samodurov, Eric Swanson; Sophomore – Rich Martin, Brent Peterson, Tim White

THE BRUINS - AS INDIVIDUALS



KENNY STONE

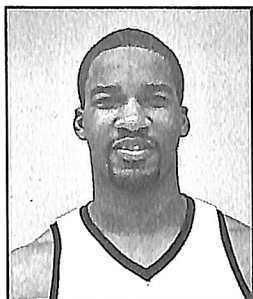
Senior
6-6 • 195
Forward

Winlock, Wash.
(Winlock)

An NAIA All-American, one of just seven returning after being named to the third team as a junior... the best player in the Northwest, running away with the balloting for the 1986 Little All-Northwest team... NAIA District 2 basketball Player of the Year... district all-star choice for a second year... National Christian College Athletic Association All-American and Regional MVP... led the Northwest in blocked shots (112) last year with 3.7 average per game... best district rebounder last year at 10.6 and third in scoring at 20.6 for best combination in district... set five school records last year... has climbed to third in all-time GFC scoring, fifth in rebounding... his career field goal accuracy of .570 is highest ever at GFC, topping the accuracy of previous GFC All-American Paul Cozens... the Bruin "franchise"... an intelligent player... a co-captain... has a seven-foot arm spread... has made dramatic improvement in outside shooting through practice and summer play... originally recruited by 18 colleges and universities... a business major... favorite food: Chinese, pizza... hobbies: music, tennis, water skiing... most influential person in life: mother and father... person most admired: David Letterman, Kareem Abdul-Jabbar. Born Aug. 19, 1965, son of Terry and Jeri Stone.

MARK'S REMARKS: "Kenny's main desire is to be the best basketball player he can be; he definitely wants to play pro basketball and I believe he has the ability. I've been at George Fox since 1975 as a player and now a coach and if he isn't the best four-year player in the district in that time, he is for sure one of the best. I only hope he fully recovers from his broken foot so that he can cap his four-year career in style and repeat or better his third team All-American selection. Just like Paul Cozens and Randy Dunn [previous GFC All-Americans], he'll never be replaced."

Year	G	FG	%	FT	%	Rb.	Avg.	Ast.	Pts.	Avg.
83-84	29	119/201	.592	58/88	.660	204	7.0	50	296	10.2
84-85	34	219/383	.572	148/211	.701	285	8.4	73	586	17.2
85-86	30	233/417	.559	126/196	.643	318	10.6	72	592	19.7
Career	93	571/1001	.570	332/495	.671	807	8.8	195	1474	15.8



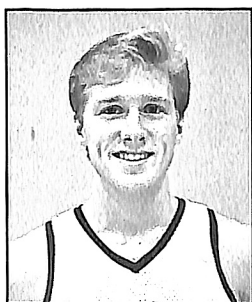
CURTIS KIMBROUGH

Senior
6-3 • 200
Forward

Indianapolis, Ind.
(George Washington)

Led all Northwest small college players in steals last season with a 3.5 per game average as he set four GFC records . . . the top returning passing forward in the district with an average of 5.3 assists a game, the Bruins' best . . . seventh highest returning district rebounder with an average 7.5 a game last season . . . when he's played, the Bruins have won 70 percent of their games . . . a team co-captain . . . great defensive specialist . . . three times has won the Bruins' Most Inspirational designation . . . district honorable mention choice last year . . . a starter . . . a sociology major . . . favorite food: steak . . . hobbies: music, playing cards . . . most influential person in life: GFC Prof. Mike Allen . . . person most admired: mother. Born Feb. 23, 1962, son of Mary Sanders . . . name pronunciation: "Kimbrow."
MARK'S REMARKS: "Curtis is a winner - he will do anything to help his team win; his scoring should be improved. Curtis is the backbone of this team, I expect big things from him his senior year."

Year	G	FG	%	FT	%	Rb.	Avg.	Ast.	Pts.	Avg.
83-84	18	39/104	.375	7/12	.583	86	4.8	50	85	4.7
84-85	34	138/303	.455	76/98	.776	240	7.1	132	352	10.4
85-86	31	115/274	.420	44/63	.698	231	7.5	163	274	8.8
Career	83	292/681	.429	127/173	.734	557	6.7	345	711	8.6



ERIC LAUTENBACH

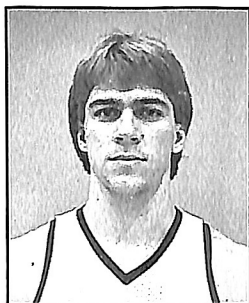
Junior
6-6 • 195
Forward

Portland, Ore.
(Sunset)

The leading returning scorer in the district who did not start . . . tenth in district shooting accuracy . . . great outside shooter . . . has improved inside game . . . intelligent player . . . a business major . . . favorite food: hamburgers, Mexican foods . . . hobbies: piano, tennis, reading . . . most influential person in life: father and mother . . . person most admired: father, NBA coach Jack Ramsay. Born Feb. 28, 1966, son of Jake and Maurine Lautenbach . . . name pronunciation: "Law-ton-bock."

MARK'S REMARKS: "Eric had a great sophomore season and we're looking for even more as a junior; a three-point shot is just a part of his game. Eric is a potential starter, but will contribute significantly as a starter or off the bench."

Year	G	FG	%	FT	%	Rb.	Avg.	Ast.	Pts.	Avg.
84-85	22	10/35	.286	14/18	.778	28	1.3	4	34	1.5
85-86	31	158/295	.536	80/99	.808	135	4.4	37	396	12.8
Career	53	168/330	.509	94/117	.803	163	3.1	41	430	8.1



TOBY LONG

Senior
6-2 • 190
Guard

Walla Walla, Wash.
(Walla Walla High)
(Walla Walla Community)

Perhaps the best returning guard in the district and a potential all-district selection (last year honorable mention) . . . is 10th in point production among district returners . . . very good outside shooter . . . second in GFC scoring a year ago . . . great physical talent and tremendous determination and desire to win . . . the 1985 MVP for Washington Region 3 community colleges and the MVP for his team . . . a starter . . . a potential Academic All-American with a 3.70 GPA in his chemistry major . . . favorite food: steak . . . hobbies: water skiing, traveling, hunting . . . most influential person in life: mother and father . . . person most admired: mother and father. Born Mar. 5, 1965, son of Wayne and Joanne Long.

MARK'S REMARKS: *"Toby is the strongest driver to the basket I've ever coached; he's looking forward to a great senior year when all his hard work and desire pay off; he's a pleasure to coach."*

Year	G	FG	%	FT	%	Rb.	Avg.	Ast.	Pts.	Avg.
85-86	31	180/330	.545	65/91	.714	80	2.6	86	425	13.7



RICH MARTIN

Sophomore
6-3 • 190
Forward

McMinnville, Ore.
(Western Mennonite)

A player who should help the team coming off the bench . . . good outside shooter . . . hard worker . . . has made tremendous improvement from freshman year last season . . . leading scorer on Bruin JV team at 16 points a contest, playing in nearly half the varsity games . . . working to improve on quickness . . . a physical education major . . . favorite food: lobster and steak . . . hobbies: music . . . most influential person in life: mother and father . . . person most admired: any president of the U.S. Born Feb. 4, 1967, son of Leroy and Joanne Martin.

MARK'S REMARKS: *"Rich is a real quality person - a player who accepts his role well and can come off the bench and help us with his shooting."*

Year	G	FG	%	FT	%	Rb.	Avg.	Ast.	Pts.	Avg.
85-86	13	3/17	.176	6/11	.545	11	.9	3	12	.9



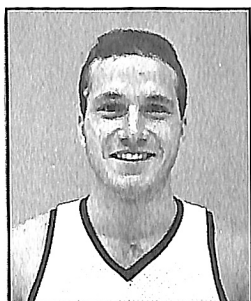
DAN NEWMAN

Junior
6-1 • 170
Guard

Portland, Ore.
(Madison High)
(Concordia)

A proven all-district player who comes to GFC after playing last year for the All-Army Europe team, averaging 20.5 points and 9.5 assists a game . . . played two seasons (1980-82) at Concordia College, averaging 19.5 points and 5 assists a game, earning NAIA District 2 All-Star honors . . . was Oregon's second leading prep scorer in 1980 when he averaged 24.3 points a game to win all-city and all-state honors . . . either a point or off guard . . . a potential starter . . . a secondary education major . . . favorite food: bacon colossal, oriental noodles . . . hobbies: music . . . most influential person in life: father . . . person most admired: father. Born Mar. 14, 1962, son of Willis and Sue Newman.

MARK'S REMARKS: *"Dan is the best shooting guard I've ever coached; his shooting is his main strength; being a proven all-district player, he is fitting into our system quickly and should have an excellent year."*



BRENT PETERSON

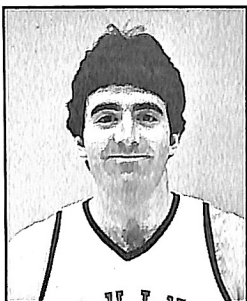
Sophomore
6-0 • 170
Guard

Bozeman, Montana
(Bozeman)

The fastest player on the team . . . exceptional in the open court . . . a very good passer . . . very good at driving to the basket . . . a point guard . . . has improved his shooting and is a definite outside threat . . . scored 19 points in 21 minutes in one game as a freshman . . . a business major . . . favorite food: roast beef, pizza . . . hobbies: softball . . . most influential person in life: mother . . . person most admired: father. Born Mar. 14, 1967, son of Merton and Joanie Peterson.

MARK'S REMARKS: *"Brent is a great athlete who will help us either as a starter or off the bench; I look for him to have a very good year even as a sophomore - he could be a future all-district player."*

Year	G	FG	%	FT	% Rb.	Avg.	Ast.	Pts.	Avg.	
85-86	21	42/74	.568	26/33	.788	32	1.5	42	110	5.2



MIKE REDMOND

Senior
6-6 • 210
Center

Seattle, Wash.
(Tyee High)
(Highline Community)

The tenth leading returning rebounder in the district . . . a very good shooter in both field goals and free throws . . . an intelligent player who knows how to use his strengths . . . a quick shot that is hard to defend . . . was a Washington Community College Region 1 MVP before transferring to Bruins a year ago . . . a business major . . . favorite food: Chinese, pizza . . . hobbies: playing cards, tennis . . . most influential person in life: mother and father . . . person most admired: David Letterman. Born Mar. 17, 1964, son of Paul and Pat Redmond.

MARK'S REMARKS: "Mike's main strength is his shooting, but he's also a good rebounder; we will look for his scoring, wanting him to shoot anytime he's open; he'll have a great senior year."

Year	G	FG	%	FT	% Rb.	Avg.	Ast.	Pts.	Avg.
85-86	30	160/295	.542	54/67	.806	169	5.6	31	12.5



CLIFF SAMODUROV

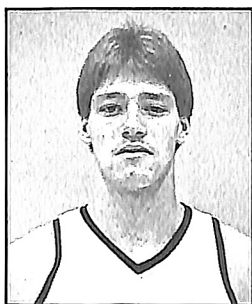
Junior
5-10 • 140
Guard

Portland
(Portland Christian)

GFC's top defensive guard . . . very good at penetrating . . . quickness is his strength . . . good ball handler . . . has improved his outside shooting with confidence . . . the only player to move up to the Bruin varsity from JV squad a year ago . . . a math/computer science major . . . favorite food: chicken with dijon sauce, Chinese . . . hobbies: calculus, music . . . most influential person in life: mother and father . . . person most admired: Dr. J. Born Dec. 14, 1965, son of Walt and Alice Samodurov . . . name pronunciation: "Sam-uh-dur-ahv."

MARK'S REMARKS: "Cliff has worked his way into playing time this year; he's a player who will do anything asked of him - he just wants to help the team win."

Year	G	FG	%	FT	% Rb.	Avg.	Ast.	Pts.	Avg.
85-86	22	8/24	.333	15/21	.714	9	.4	19	1.4



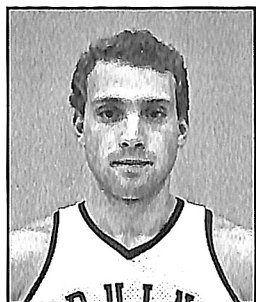
ERIC SWANSON

Junior
6-5 • 205
Forward

Castle Rock, Wash.
(Castle Rock High)
(Grays Harbor Comm.)

The 1986 MVP for Washington Region 2 community colleges ... captain and MVP of his team ... recruited by 21 schools, including NCAA Division I schools ... averaged 18 points and 8.5 rebounds a game last season, shooting at 55 percent from the field ... very good outside shooter ... extremely strong inside ... play resembles former Bruin all-district forward Randy Dunn ... a strong desire to win ... an education major ... favorite food: pizza, steak ... hobbies: skiing, slow-pitch softball, fishing ... most influential person in life: mother and father ... person most admired: father. Born Nov. 17, 1965, son of Lyle and Linda Swanson.

MARK'S REMARKS: *"Eric is a great addition to the Bruins; he's the JC player I wanted and we're fortunate to get a player of his quality; he will do anything the coach asks of him; he's fighting for a starting position and may be tough to beat out."*



TIM WHITE

Sophomore
6-7 • 200
Center

Oregon City, Ore.
(North Clackamas
Christian)

A very aggressive player who rebounds well ... led JV team in rebounding last season with nine per game ... will be used coming off the bench, his main role being rebounding ... saw action in more than half the varsity games last year and will play on both squads again this season ... named most improved last year ... will be working on improving balance ... a history major ... favorite food: steak and lobster ... hobbies: hunting and fishing ... most influential person in life: mother and father ... person most admired: Larry Bird. Born Nov. 21, 1966, son of John and Lola White.

MARK'S REMARKS: *"Tim is another one of the quality people we have in our program; he plays very hard and with improved skills will become a good player in our district."*

Year	G	FG	%	FT	%	Rb.	Avg.	Ast.	Pts.	Avg.
85-86	17	8/19	.421	3/10	.300	29	1.7	2	19	1.1

COACH MARK VERNON

Mark S. Vernon is George Fox College's winningest coach ever with an 80-45 record, a winning rate of 64 percent. Under his leadership the Bruins are 25-1 at home in the last two seasons and 44-13 in four years. And, Vernon is the only GFC coach to have ever posted a winning season on the road, where he is 36-32.



His efforts have not gone unnoticed. In 1985 he was named NAIA District 2 Basketball Coach of the Year. He was the youngest coach in the district at the time and the Bruins had just gone 27-7, the best record in GFC's history, and a record that made it Oregon's winningest college in basketball – at any level – in Oregon.

In his first season the Bruins were 15-16, in tenth place in NAIA District 2, up from 16th the year before. The next year the Bruins were 17-12 and in fifth slot. In 1984-85 the Bruins produced their 27-7 mark and GFC was second. Last year GFC went 21-10, third in the district.

Vernon, 33, has his entire collegiate coaching career at George Fox, but the tie with the Bruins is longer. He came to the College in 1975 as a student and basketball player. Upon completion of his eligibility he remained with GFC as an assistant for three years (1977-78, 79-80, and 81-82).

Vernon was assistant for the Bruins while working on a master's degree in physical education at Linfield College, with work completed in 1982. Vernon teaches physical education classes in addition to his coaching duty.

With the departure of Sam Willard as head coach, the College began a six-week nationwide search that started with more than 70 names. In the end, the search committee found the new Bruin coach they were looking for was already on campus. Vernon was named in May 1982.

A 1977 George Fox graduate, Vernon, as a senior, was named the College's Outstanding Physical Education Major. The same year he was named George Fox's Outstanding Young Person in Teacher Education by Phi Delta Kappa, a national professional educators society.

In the fall of 1981 Vernon joined the GFC physical education faculty as women's volleyball coach, women's tennis coach, and basketball assistant, along with teaching assignments.

As a basketball Bruin, Vernon was a guard, establishing the Bruins' all-time career high average in assists (3.9) at that time. He was named the team's Most Inspirational Player by his teammates as a senior, a year the Bruins were 20-9. During Vernon's two years in a Bruin uniform his teams were 39-17, and Vernon compiled statistics that place him number 2 in the Value Point System, preceded only by All-American Paul Cozens.

Vernon also played one year at Highline Community College, Seattle, receiving both Best Defense and Hustle awards. He also played ball at West Seattle High School, where he was named Outstanding Athlete of the Year as a senior.

In addition to his basketball coaching at George Fox, Vernon assists with the summer Jack Ramsay basketball camps.

Vernon and his wife, Denise, 26, were married in August 1981. Returning to school after a couple of years out for work, she completed a degree in physical education in 1985. As a Lady Bruin in volleyball she helped her team to the National Christian College Athletic Association national title, named an All-American. Currently she is a dental assistant for Newberg dentist Lance Rosenau.

ASST. COACH STEVE GRANT

Steve Grant is in his fifth year with the Bruins, being named in 1982 to the George Fox physical education teaching faculty and to serve as men's basketball assistant and head women's volleyball coach.

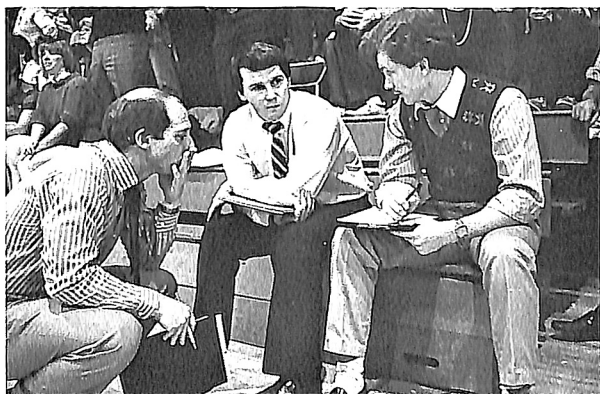
Grant, 39, replaced Mark Vernon as volleyball coach when Vernon stepped up to the head basketball position. The Bruin assistant is a 1969 graduate of Biola, where as a guard for the Eagles he was named

Most Valuable both his junior and senior years. He then was named assistant basketball coach for two years, also assisting in soccer.

At Western Baptist College in 1981-82, Grant coached the women's basketball team and was head men's soccer coach, guiding the Warriors to an 8-4-3 mark. Grant previously was at Salem Academy for 10 years where for nine years, until 1980, he guided the basketball Crusaders. He coached varsity baseball for five seasons, then varsity women's volleyball for five years, leading Salem Academy to the playoffs each of those years.

In his first season with the volleyball Bruins, Grant guided his squad to a 15-6 record and regional playoffs. In his second year it was 11-18. In 1984 it was 30-10 as George Fox won the National Christian College Athletic Association national championship in Chicago. Grant was named NCCAA national Coach of the Year as well as NAIA District 2 1984 Coach of the Year as his Lady Bruins finished third in district play. Last year the Lady Bruins were 16-18.

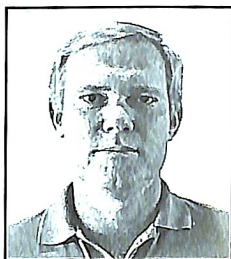
Grant and his wife, Kathleen, live in Salem. They have two children, Jeff, 14, and Bryan, 11.



Coaches: Grant, Vernon, Mount

BRUIN STAFF

PAUL BERRY is in his second year as George Fox College Athletic Director. He joined the GFC Physical Education staff in 1984 as soccer and baseball coach, also assisting with athletic recruitment. In the fall of 1986 he stepped out of the position of field coach in soccer to assume the duties of administrative coach. At the same time, Berry assumed duties of executive director of the GFC Bruin Club, the fund-raising organization for athletic scholarships.



Berry, 44, came to the college with 10 years of college-level coaching. For three years (1971-74) Berry was a soccer coach at Cedarville College, Ohio. He then moved to Los Angeles Baptist College, coaching both soccer and baseball. From 1976-1980 Berry was director of admissions and college relations at Los Angeles Baptist.

For the three years prior to moving to GFC, Berry was assistant baseball coach at Biola University while operating his own sporting goods company. He has a master's degree in physical education from Cal State - Long Beach, received in 1971.

MIKE WIRTA is in his 16th year as George Fox basketball statistician. Called "Biggs" by his friends, Wirta is a 1974 George Fox graduate and perhaps one of the most loyal Bruin fans. A member of the College's physical plant staff, Wirta has the upkeep of the sports center as his major responsibility. A Newberg native, he devotes many volunteer hours to compiling statistics and records for the players and teams recorded in this book.



BARRY HUBBELL has directed the George Fox Sports Information program since 1970. He joined the College staff in 1968 as Director of Information and in 1972 was named Director of College Relations, overseeing all college publicity and promotion. A 1964 graduate of the College, he was a correspondent for Portland and Salem newspapers and a McMinnville radio station before assuming his George Fox positions.

In addition to his college role, he serves as publicity chairman for Northwest Yearly Meeting of Friends Church and is president of the organization's Media Board.

He is a member of the NAIA Sports Information Directors Association and the College Sports Information Directors Association. In the last seven years the organizations have awarded his publications 20 national awards, including five first places; included are those for best basketball media guides, best basketball programs and best track media guides.

SPORTS INFORMATION ASSISTANTS - Brian Bizik, Melanie Springer

SCOREKEEPER - Don Millage

CLOCK - Bob Stewart, Quincy Fodge

STATISTICAL ASSISTANT - Scott Campbell

BALL BOYS - Brook Jackson, Bryan Grant, Jonathan Rickey

PEP BAND DIRECTOR - Joey Rourke

PUBLIC ADDRESS ANNOUNCER - Paul Berry

BRUIN HOSTS/HOSTESSES



Back row, left to right: Tim Oppenlander, Greg Loyd, Steve Cammack. Front row: Tressa Porter, Diana Crane, Christine Schuck.

The College's "official greeters" to Bruin sports fans and for other special occasions, the 1986-87 Bruin Hosts/Hostesses, were specially chosen from dozens volunteering. They provide service at home games—giving information, programs, refreshments to press members and statisticians, and smiles to all.

Returning to head the organization is Tressa Porter, a senior business/economics major from Portland. Other members are Steve Cammack, a junior business major from Ontario, Ore.; Diana Crane, a senior sociology major from Cornelius, Ore.; Greg Loyd, a junior biology major from East Wenatchee, Wash.; Tim Oppenlander, a junior computer science major from Cornelius, Ore.; and Christine Schuck, a junior elementary education major from Ariel, Wash.

BRUIN RALLY SQUAD



Left to right: Kristi Stanbro, Cheryl Kester, Kerry Grant, Tami Knodel, Cherryn Kast.

Bruin basketball cheers are led by a five-member squad chosen by a student-faculty-staff committee after tryouts. Members are Kerry Grant, a freshman psychology/elementary education major from Milwaukie, Ore.; Cherrynn Kast, a language arts teaching major from Glens Ferry, Idaho; Cheryl Kester, an elementary education major from Caldwell, Idaho; Tami Knodel, a freshman elementary education major from Boring, Ore.; and Kristi Stanbro, a language arts teaching major from Colton, Ore.

JV ROSTER



Back row, left to right: Scott Klinger, Steve Heselius, Pete Liljeholm, Rich Schlachter, Andy LaVeine, Kelly Blankenship, Brett Buchholz. Front row: Coach Matt Mount, Andy Hyatt, Troy Vermillion, Chris Bauge, Asst. Coach Scott Iverson.

<i>Name</i>	<i>No.</i>	<i>Pos.</i>	<i>Height</i>	<i>Year</i>	<i>Hometown</i>
Bauge, Chris	20/21	G	5-11	Fr	Seaview, Wash.
Buchholz, Brett	52/53	F/C	6-2	Fr	Sheridan, Ore
Blankenship, Kelly	40/41	F	6-1	So	Woodland, Wash.
Heselius, Steve	42/43	G/F	6-1	So	Lake Oswego, Ore.
Hyatt, Andy	14/15	G	5-11	Fr	Grants Pass, Ore.
Klinger, Scott	24/25	G	6-0	Fr	Ilwaco, Wash.
LaVeine, Andy	44/45	F	6-3	So	Tigard, Ore.
Liljeholm, Peter	30/31	G/F	6-3	Fr	Lincoln City, Ore.
Schlachter, Rich	34/33	F	6-3	Fr	Newberg, Ore.
Vermillion, Troy	12/13	G	5-10	Fr	Sweet Home, Ore.
White, Tim	50/51	C	6-7	So	Oregon City, Ore.

JV SCHEDULE

Nov. 21	Lewis & Clark College, 7:00 p.m.	Newberg
25	Chemeketa Community C., 8:00 p.m.	Salem
Dec. 2	Mt. Hood Community C., 5:15 p.m.	Newberg
4	Pacific University, 7:00 p.m.	Forest Grove
9	Linfield College, 5:15 p.m.	McMinnville
12	Big Bend Community C., 7:30 p.m.	Moses Lake
13	Big Bend Community C., 5:00 p.m.	Moses Lake
16	Mt. Hood Community C., 8:00 p.m.	Gresham
Jan. 9	Western Baptist College, 5:15 p.m.	Salem
10	Western Oregon State C., 5:15 p.m.	Newberg
16	Genesis, 5:15 p.m.	Newberg
17	Eugene Bible College, 5:15 p.m.	Newberg
20	Linfield College, 5:15 p.m.	Newberg
23	Eugene Bible College, 8:00 p.m.	Eugene
26	Lewis & Clark, 7:00 p.m.	Portland
31	Willamette University, 5:15 p.m.	Salem
Feb. 3	Western Baptist College, 5:15 p.m.	Newberg
7	Genesis, 5:15 p.m.	Newberg
11	Pacific University, 7:00 p.m.	Newberg
14	Willamette University, 5:15 p.m.	Newberg
20	Western Oregon State C., 3:30 p.m.	Monmouth

JV COACH MATT MOUNT

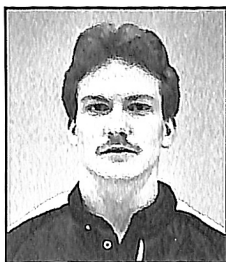
Matt Mount is in the coaching ranks for a second season, returning to coach GFC's jayvee team and to serve as second assistant to Coach Mark Vernon and the varsity squad.

A 1986 George Fox graduate, Mount was named GFC's "Outstanding Physical Education Major" and with a 3.95 grade average was second in his class academically.

He gave up his final year of college playing eligibility to take an early coaching start. Mount, 23, assists Vernon with varsity practices, in charting during the varsity games, and as Baby Bruin boss.

Originally from Bainbridge Island, Wash., Mount, a 6-0 guard, played three years for Vernon and knows his system. In high school he was an Olympic League Coaches' All-Star Team choice as a senior when his team went 20-4 and he averaged 16 points a game.

A substitute teacher in the Newberg area, Mount was married to his wife, Grace, a 1984 GFC graduate, in June.





Back row, left to right: Asst. Coach Matt Mount, Rich Martin, Eric Swanson, Curtis Kimbrough. Front row, left to right: Toby Long, Dan Newman, Cliff Samodurov.

Name	Home	Pos.	Height	Weight	Avg.
KIMBROUGH, Curtis	44	F	6-3	200	20
LAUTENBACH, Eric	32	F	6-6	195	20
LONG, Toby	24	G	6-2	190	20
MARTIN, Rich	40	F	6-3	190	10
NEWMAN, Dan	20	G	6-1	170	20
PETERSON, Brent	14	G	6-0	170	10
REDMOND, Mike	54	C	6-6	210	20
SAMODUROV, Cliff	10	G	5-10	140	20
STONE, Kenny	34	F	6-6	195	20
SWANSON, Eric	42	F	6-5	205	20
WHITE, Tim	50	C	6-7	200	20

NUMERICAL ROSTER

10 Cliff Samodurov
14 Brent Peterson

20 Dan Newman
24 Toby Long
32 Eric Lautenbach

6-87 BASKETBALL ROSTER



, Eric Lautenbach, Tim White, Kenny Stone, Mike Redmond,
to right: Asst. Coach Steve Grant, Brent Peterson,
Samodurov, Coach Mark Vernon

Age	Year	Exp.	Hometown (High School)
24	Sr.	3V	Indianapolis, Ind. (Geo. Wash)
20	Jr.	2V	Portland, Ore. (Sunset)
21	Sr.	2JC/1V	Walla Walla, Wash. (Walla Walla) (Walla Walla Community)
19	So.	1V	McMinnville, Ore. (Western Mennonite)
24	Jr.	2V	Portland, Ore. (Madison) (Concordia)
19	So.	1V	Bozeman, Mont. (Bozeman)
22	Sr.	2JC/1V	Seattle, Wash. (Tye) (Highline Community)
21	Jr.	1JV/1V	Portland, Ore. (Portland Christian)
21	Sr.	3V	Winlock, Wash. (Winlock)
21	Jr.	2JC	Castle Rock, Wash. (Castle Rock) (Grays Harbor Community)
20	So.	1V	Oregon City, Ore. (N. Clackamas Christian)

34 Kenny Stone
40 Rich Martin
42 Eric Swanson

44 Curtis Kimbrough
50 Tim White
54 Mike Redmond

BRUIN RECORDS

(Since Joining NAIA)

INDIVIDUAL SINGLE GAME RECORDS

Most Points - 42	Hille van der Kooy
	vs. Eastern Oregon 12/5/80
Most Field Goals - 17	Rob Wunder vs. Macalester 1/6/73
	Paul Cozens vs. Southern Oregon 2/19/75
Most Field Goals Att. - 31	Larry Craven
	vs. Southern Oregon 1/26/69
Best Field Goals Pct. - 1.000 (10-10)	J. R. Smith
	vs. Columbia Christian 1/29/82
Best Field Goals Pct. (with miss) - .933 (14-15)	Paul Cozens
	vs. Pacific 12/17/76
Most Free Throws Made - 14	
	Randy Dunn (14-15) vs. Linfield 1/6/84
	Tom Hewitt (14-15) vs. Pacific 12/18/75
	Hille van der Kooy (14-15) vs. Eastern Oregon 12/5/80
Most Free Throws Att. - 18	Sammy Ibarra (12-18)
	vs. Pacific 12/8/72
Best Free Throw Pct. - 1.000	Paul Cozens (12-12)
	vs. Warner Pacific 2/21/78
Best Free Throw Pct. (with miss) - .933	
	Randy Dunn (14-15) vs. Linfield 1/6/84
	Tom Hewitt (14-15) vs. Pacific 12/18/75
	Hille van der Kooy (14-15) vs. Eastern Oregon 12/5/80
Most Rebounds - 25	Gordy Loewen
	vs. Warner Pacific 2/11/71
Most Off. Reb. - 16	Gordy Loewen
	vs. Warner Pac. 2/11/71
Most Def. Reb. - 18	Randy Dunn vs. NNC 2/18/84
Most Assists - 14	Mike Royer vs. Eastern Oregon 1/18/82
	Les Harrison vs. Oregon Tech 3/1/86
Most Turnovers - 11	Gary Chenault
	vs. Portland State 1/13/78
Most Steals - 11	Curtis Kimbrough
	vs. U.C. - San Diego 12/19/84
Most Blocked Shots - 8	Kenny Stone
	vs. Willamette 11/5/85

INDIVIDUAL SEASON RECORDS

Most Points - 692	Paul Cozens 1977-78
Best Average - 23.9	Paul Cozens 1977-78
Most Field Goals Made - 270	Paul Cozens 1977-78
Most Field Goals Att. - 500	Rob Wunder 1973-74
Best Field Goal Pct. - .617 (109-175)	J.R. Smith 1981-82
Most Consecutive Field Goals - 16	J.R. Smith 1981-82
Most Free Throws Made - 152	Paul Cozens 1977-78
Most Free Throws Att. - 211	Kenny Stone 1984-85
Best Free Throws Pct. - .922 (71-77)	Gary Chenault 1978-79
Most Consecutive Free Throws - 56	Gary Chenault 1978-79
Most Rebounds - 422	Randy Dunn 1981-82
Most Offensive Rebounds - 138	Randy Dunn 1981-82
Most Defensive Rebounds - 284	Randy Dunn 1981-82
Best Rebound Average - 12.79	Randy Dunn 1981-82
Most Assists - 178	Mike Royer 1981-82
Best Assist Average - 6.1	Tom Hewitt 1976-77
Most Blocked Shots - 123	Kenny Stone 1984-85
Best Block Average - 3.73	Kenny Stone 1985-86
Most Turnovers - 132	Mike Royer 1981-82
Most Steals - 108	Curtis Kimbrough 1985-86
Best Steal Average - 3.48	Curtis Kimbrough 1985-86

Most Fouls – 116 Dave Mauermann 1982-83
 Highest Foul Average – 3.74 Dave Mauermann 1982-83
 Most Games Played – 34 6 Players tied 1984-85

INDIVIDUAL CAREER RECORDS

Most Points – 2,187 Paul Cozens 1974-78
 Best Average – 20.53 Hille van der Kooy 1979-81
 Most Field Goals Made – 895 Paul Cozens 1974-78
 Most Field Goals Att. – 1,620 Paul Cozens 1974-78
 Best Field Goal Pct. – .570 Kenny Stone 1983-86
 Most Free Throws – 397 Paul Cozens 1974-78
 Most Free Throws Att. – 495 Kenny Stone 1983-86
 Best Free Throw Pct. – .870 Gary Chenault 1976-79
 Most Rebounds – 1,147 Paul Cozens 1974-78
 Most Offensive Rebounds – 335 Randy Dunn 1981-84
 Most Defensive Rebounds – 821 Paul Cozens 1974-78
 Best Rebound Average – 11.6 .. Hille van der Kooy 1979-81
 Most Assists – 520 Al Vasey 1982-86
 Best Assist Average – 4.80 Les Harrison 1984-86
 Most Steals – 231 Curtis Kimbrough 1983-86
 Best Steal Average – 2.78 Curtis Kimbrough 1983-86
 Most Games Played – 118 Al Vasey 1982-86
 Most Personal Fouls – 303 Gordy Loewen 1968-72
 Most Blocked Shots – 308 Kenny Stone 1983-86
 Best Blocked Shots Average – 3.31 .. Kenny Stone 1983-86

TEAM SINGLE GAME RECORDS

Most Points (overtime) – 123 vs. Linfield
 (123-116) (4 OTs) 12/30/75
 Most Points (regulation) – 113 vs. Concordia
 (113-69) 12/14/85
 Least Points – 33 vs. EOSC (33-30) 2/6/81
 Least Points Against – 30 vs. Eastern Oregon
 (33-30) 2/6/81
 Most Points Against – 124 vs. Portland State
 (124-81) 1/13/78
 Biggest Winning Margin – 64 vs. Columbia Christian
 (109-45) 1/8/74
 Biggest Losing Margin – 62 vs. Lewis & Clark
 (112-50) 1/15/70
 Most Field Goals – 51 vs. Linfield 12/30/75
 Most Field Goals Att. – 114 .. vs. Columbia Christian 1/8/74
 Best Field Goal Pct. – .714 vs. Columbia Christian
 (40-56) 1/29/82
 Worst Field Goal Pct. – .202 .. vs. Pacific (21-104) 12/10/67
 Most Free Throws Made – 39 vs. Lewis & Clark
 (39-47) 1/8/71
 Most Free Throws Att. – 50
 vs. Northwest Nazarene (30-50) 2/14/70
 vs. Western Oregon (38-50) 2/15/86
 Best Free Throw Pct. – 1.000 vs. Warner Pacific
 (6-6) 2/12/77
 Best Free Throw Pct. (with miss) – .923
 vs. Northwest Nazarene (36-39) 2/9/76
 Most Rebounds – 104 vs. Columbia Christian 1/8/74
 Most Assists – 36 vs. Columbia Christian 1/29/82
 Most Turnovers – 48 vs. Whitman 12/19/72
 Most Personal Fouls – 39 ... vs. Northwest Nazarene 2/4/71
 Most Steals – 26 vs. Columbia Christian 1/11/86
 vs. Concordia 1/28/86
 Most Blocked Shots – 14 vs. Pacific 12/13/84

TEAM SEASON RECORDS

Most Wins	27 (27-7)	1984-85
Best Winning Pct.794 (27-7)	1984-85
Most Losses	23 (3-23)	1969-70
Least Losses	7 (27-7)	1984-85
Least Wins	3 (3-23)	1969-70
Lowest Winning Pct.115 (3-23)	1969-70
Most Points	2668	1984-85
Least Points	1816	1968-69
Most Points Against	2667	1981-82
Least Points Against	1964	1971-72
Highest Scoring Average	86.0	1976-77
Lowest Scoring Average	66.9	1965-66
Highest Scoring Average Against ..	89.0	1969-70
Lowest Scoring Average Against ..	66.6	1965-66
Highest Scoring Margin	10.3	1985-86
Most Field Goals Made	1052	1985-86
Most Field Goals Att.	2125	1973-74
Best Field Goal Pct.525	1983-84
Most Free Throws Made	642	1984-85
Most Free Throws Att.	874	1984-85
Best Free Throw Pct.775	1983-84
Most Rebounds	1406	1973-74
Best Rebound Average	46.80	1973-74
Best Rebound Margin	6.3	1981-82
Most Assists	713	1984-85
Best Assist Average	23.00	1979-80
Most Turnovers	596	1985-86
Most Steals	445	1984-85
Best Steal Average	13.48	1985-86
Most Personal Fouls	704	1984-85
Longest Winning String	11 (games 2 thru 12)	1976-77
Longest Loss String	18 (games 8 thru 25)	1969-70



BRUIN TOP TEN

(NAIA Competition)

* Current Team Member

CAREER SCORING

Name	Years Played	Games	Total	Average
Paul Cozens	1974-78	113	2187	19.35
Randy Dunn	1981-84	88	1744	19.82
Kenny Stone*	1983-86	93	1474	15.85
Mike Royer	1978-82	114	1367	12.00
Dave Adrian	1975-78; 1979-80	103	1307	12.69
Gordy Loewen	1968-72	100	1300	13.00
Gary Chenault	1976-79	86	1187	13.80
Hille van der Kooy	1979-81	57	1170	20.52
Sammy Ibarra	1970-73	84	1140	13.57
Phil Barnhart	1977-81	113	1112	9.84

CAREER REBOUNDING

Paul Cozens	1974-78	113	1147	10.15
Dave Alteneder	1965-69	104	1013	9.74
Randy Dunn	1981-84	88	994	11.30
Gordy Loewen	1968-72	100	968	9.68
Kenny Stone*	1983-86	93	807	8.68
Ray Willis	1972-75	91	771	8.47
Gary Blackmar	1965-68	76	740	9.74
Hille van der Kooy	1979-81	57	660	11.58
Curtis Kimbrough*	1983-86	83	557	6.71
Eddie Fields	1970-73	83	503	6.06

CAREER ASSISTS

Al Vasey	1982-86	118	520	4.41
Mike Royer	1978-82	114	509	4.46
Phil Barnhart	1977-81	113	428	3.79
Tom Hewitt	1973-77	111	404	3.64
Dave Adrian	1975-78; 1979-80	103	376	3.65
Curtis Kimbrough*	1983-86	83	345	4.16
Eddie Fields	1970-73	83	325	3.92
Ray Willis	1972-75	91	304	3.34
Les Harrison	1984-86	61	293	4.80
Steve Strutz	1972-76	109	249	2.29
Kenny Stone*	1984-86	93	195	2.10

CAREER FIELD GOAL ACCURACY

(Minimum 100 attempts in 2 years)

Kenny Stone*	1983-86	571/1001	.570
Liley Thompson	1982-84	188/336	.560
Paul Cozens	1974-78	895/1620	.552
Randy Dunn	1981-84	697/1265	.551
Dave Mauermann	1981-83	245/447	.548
Eric Smith	1980-82	122/224	.545
Mike Brewer	1979-81	222/420	.529
Hille van der Kooy	1979-81	452/879	.514
Tim Hardie	1975-77	407/792	.514
Phil Barnhart	1977-81	404/787	.513
Kirk Burgess	1976-78	122/238	.513
Eric Lautenbach*	1984-86	168/330	.509

CAREER FREE THROW ACCURACY

Gary Chenault	1976-79	195/224	.870
Dave Morgan	1970-72	84/98	.857
Paul Cozens	1974-78	397/470	.845
Al Vasey	1982-86	126/151	.834
Jim McNelly	1965-67	82/100	.820
Eric Lautenbach*	1984-86	94/117	.803
Randy Dunn	1981-84	350/441	.794
Larry Jury	1983-84	231/299	.773
Greg Bolt	1983-85	146/189	.772
Dave Adrian	1975-78; 1979-80	243/316	.769

* Current team member

SEASON SCORING

Name	Year	Total
Paul Cozens	1977-78	692
Randy Dunn	1982-83	614
Hille van der Kooy	1979-80	598
Kenny Stone*	1985-86	592
Randy Dunn	1981-82	581
Hille van der Kooy	1980-81	572
Rob Wunder	1973-74	567
Tim Hardie	1976-77	562
Randy Dunn	1983-84	549
Paul Cozens	1975-76	530

SEASON REBOUNDING

Randy Dunn	1981-82	422
Paul Cozens	1977-78	370
Randy Dunn	1982-83	343
Hille van der Kooy	1979-80	333
Hille van der Kooy	1980-81	327
Kenny Stone*	1985-86	318
Paul Cozens	1976-77	305
Dave Alteneder	1965-66	297
Gary Blackmar	1966-67	295
Ray Willis	1973-74	289

SEASON ASSISTS

Mike Royer	1981-82	178
Tom Hewitt	1976-77	177
Phil Barnhart	1979-80	172
Al Vasey	1983-84	172
Jeff Bieker	1981-82	168
Curtis Kimbrough*	1985-86	163
Mark Vernon	1976-77	155
Les Harrison	1984-85	154
Les Harrison	1985-86	139
Tom Hewitt	1975-76	138

SEASON SCORING AVERAGE

Paul Cozens	1977-78	23.9
Randy Dunn	1982-83	21.2
Randy Dunn	1983-84	21.1
Hille van der Kooy	1979-80	20.6
Hille van der Kooy	1980-81	20.4
Tim Hardie	1976-77	20.1
Kenny Stone*	1985-86	19.7
Paul Cozens	1975-76	19.6
Rob Wunder	1973-74	18.9
Paul Cozens	1976-77	18.1

SEASON REBOUNDING AVERAGE

Randy Dunn	1981-82	12.79
Paul Cozens	1977-78	12.75
Tom Ackerman	1968-69	12.73
Randy Dunn	1982-83	11.83
Gary Blackmar	1966-67	11.80
Hille van der Kooy	1980-81	11.70
Hille van der Kooy	1979-80	11.50
Dave Alteneder	1967-68	10.80
Dave Alteneder	1965-66	10.60
Kenny Stone*	1985-86	10.60

GAME SCORING

Hille van der Kooy	12/5/80 (Eastern Oregon)	42
Paul Cozens	1/21/78 (Warner Pacific)	38
Hille van der Kooy	2/21/81 (Warner Pacific)	38
Paul Cozens	2/19/75 (Southern Oregon)	37
Tom Hewitt	1/25/77 (Alaska - Anchorage)	36
Paul Cozens	12/30/75 (Linfield)	35
Paul Cozens	2/11/78 (College of Idaho)	34
Hille van der Kooy	2/5/80 (Lewis & Clark)	34
Tim Hardie	12/8/76 (Linfield)	34
Rob Wunder	1/6/73 (Macalester)	34
Gordy Loewen	3/1/69 (Eastern Oregon)	34
Randy Dunn	2/19/83 (Seattle Pacific)	34
Randy Dunn	1/6/84 (Linfield)	34
Kenny Stone*	11/25/85 (U. Puget Sound)	34

GAME REBOUNDING

Gordy Loewen	2/11/71 (Warner Pacific)	25
Randy Dunn	2/18/84 (NW Nazarene)	23
Hille van der Kooy	12/5/80 (Eastern Oregon)	23
Gordy Loewen	2/22/69 (Southern Oregon)	22
Hille van der Kooy	12/14/79 (Linfield)	20
Paul Cozens	12/3/76 (Lewis & Clark)	20
Gordy Loewen	12/13/71 (Alaska - Methodist)	20
Gordy Loewen	12/5/70 (Eastern Oregon)	20
Gordy Loewen	1/3/71 (Alaska Methodist)	20
Gordy Loewen	1/4/71 (Alaska Methodist)	20
Dave Alteneder	2/5/66 (Oregon Tech)	20

GAME ASSISTS

Mike Royer	1/18/82 (Eastern Oregon)	14
Les Harrison	3/1/86 (Warner Pacific)	14
Tom Hewitt	2/7/76 (Lewis & Clark)	13
Jeff Bieker	2/19/82 (College of Idaho)	13
Mike Royer	2/21/81 (Warner Pacific)	12
Mark Vernon	12/8/76 (Linfield)	12
10 Players with	(Phil Barnhart-twice)	11
13 Players with		10

YEAR-BY-YEAR LEADERS

SCORING

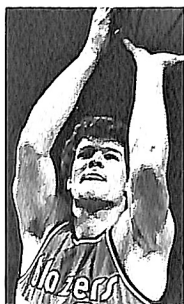
Year	Name	Total	Games	Average
1965-66	Gary Blackmar	303	28	10.82
1966-67	Gary Blackmar	410	26	15.77
1967-68	Gary Blackmar	321	23	13.95
1968-69	Gordy Loewen	437	26	16.81
1969-70	Gordy Loewen	368	22	16.72
1970-71	Sammy Ibarra	408	28	14.57
1971-72	Gary Berg	378	25	15.12
1972-73	Sammy Ibarra	442	31	14.26
1973-74	Rob Wunder	567	30	18.90
1974-75	Paul Cozens	441	28	15.57
1975-76	Paul Cozens	530	27	19.62
1976-77	Tim Hardie	562	28	20.07
1977-78	Paul Cozens	692	29	23.86
1978-79	Gary Chenault	491	29	16.90
1979-80	Hille van der Kooy	598	29	20.60
1980-81	Hille van der Kooy	572	28	20.43
1981-82	Randy Dunn	581	33	17.61
1982-83	Randy Dunn	614	29	21.17
1983-84	Randy Dunn	541	25	21.64
1984-85	Kenny Stone	586	34	17.24
1985-86	Kenny Stone	592	30	19.73

REBOUNDED

Year	Name	Total	Games	Average
1965-66	Dave Alteneder	297	28	10.61
1966-67	Gary Blackmar	295	25	11.80
1967-68	Dave Alteneder	282	26	10.84
1968-69	Tom Ackerman	242	19	12.73
1969-70	Gordy Loewen	231	22	10.50
1970-71	Gordy Loewen	275	28	9.82
1971-72	Gordy Loewen	240	25	9.60
1972-73	Rob Wunder	265	31	8.55
1973-74	Ray Willis	289	30	9.63
1974-75	Ray Willis	277	30	9.23
1975-76	Paul Cozens	280	27	10.37
1976-77	Paul Cozens	305	29	10.51
1977-78	Paul Cozens	370	29	12.75
1978-79	Mike Peregrin	184	29	6.34
1979-80	Hille van der Kooy	333	29	11.50
1980-81	Hille van der Kooy	327	28	11.69
1981-82	Randy Dunn	422	33	12.79
1982-83	Randy Dunn	343	29	11.83
1983-84	Randy Dunn	226	25	9.04
1984-85	Kenny Stone	285	34	8.38
1985-86	Kenny Stone	318	30	10.60



Paul Cozens,
1974-78



Randy Dunn,
1981-84



Rob Wunder,
1972-74

ASSISTS

1965-70	No record			
1970-71	Ed Fields	120	27	4.44
1971-72	Ed Fields	71	25	2.84
1972-73	Ed Fields	103	31	3.32
1973-74	Ray Willis	122	30	4.06
1974-75	Ray Willis	128	30	4.26
1975-76	Tom Hewitt	138	27	5.11
1976-77	Tom Hewitt	177	29	6.10
1977-78	Dave Adrian	114	29	3.93
1978-79	Tim Adrian	96	29	3.31
1979-80	Phil Barnhart	172	30	5.92
1980-81	Mike Royer	136	28	4.86
1981-82	Mike Royer	178	33	5.39
1982-83	Al Vasey	135	31	4.35
1983-84	Al Vasey	167	28	5.96
1984-85	Les Harrison	154	34	4.53
1985-86	Curtis Kimbrough	163	31	5.26

VALUE POINT SYSTEM

The Value Point System measures a player's overall effectiveness. It is computed by adding the points scored, plus rebounds, plus twice the number of assists, plus twice the number of steals. That figure is divided by the number received from adding twice the number of missed field goals, plus foul shots missed, plus twice the number of turnovers, plus twice the number of fouls.

CAREER

Paul Cozens	1974-78	1.75
Mark Vernon	1975-77	1.63
Randy Dunn	1981-83	1.63
Al Vasey	1982-86	1.60
Ed Fields	1970-73	1.50
Curtis Kimbrough*	1983-86	1.43
Tim Hardie	1975-77	1.38
Kenny Stone*	1983-86	1.36
Phil Barnhart	1977-81	1.35
Les Harrison	1984-86	1.34

SEASON

Paul Cozens	1977-78	1.95
Al Vasey	1984-85	1.81
Mark Vernon	1976-77	1.77
Paul Cozens	1976-77	1.76
Al Vasey	1983-84	1.76
Randy Dunn	1982-83	1.69
Ed Fields	1970-71	1.66
Phil Barnhart	1979-80	1.64
Paul Cozens	1975-76	1.63
Randy Dunn	1983-84	1.61

* Current team member

HONORED BRUINS

Gordy Loewen	NAIA Dist. 2 All-Star	1968-69; 69-70; 70-71
David Morgan	NAIA Dist. 2 Honorable Mention	1970-71
Sammy Ibarra	NAIA Dist. 2 Second Team	1972-73
Craig Taylor	NAIA Dist. 2 Honorable Mention	1972-73
Rob Wunder	NAIA Dist. 2 Honorable Mention	1972-73
	NAIA Dist. 2 First Team	1973-74
	All-Northwest First Team	1973-74
	UPI West Coast Honorable Mention	1973-74
Ray Willis	NAIA Dist. 2 Honorable Mention	1973-74; 74-75
Bob Wright	NAIA Dist. 2 Honorable Mention	1973-74
Tim Hardie	NAIA Dist. 2 All-Star	1976-77
Paul Cozens	NAIA Dist. 2 First Team	1974-75; 75-76; 76-77; 77-78
	All-Northwest First Team	1975-76; 77-78
	All-Northwest Second Team	1976-77
	NAIA All-American Third Team	1976-77
	NAIA All-American Second Team	1977-78
	First GFC player to have jersey retired	1977-78
	UPI West Coast Honorable Mention	1977-78
	NBA Ninth Round Draft Choice	(Portland Trail Blazers) 1978
Gary Chenault	NAIA Dist. 2 Second Team	1978-79
	All-Northwest Honorable Mention	1978-79
Jeff Loe	NAIA Dist. 2 Honorable Mention	1979-80
Hille van	NAIA Dist. 2 First Team	1979-80
der Kooy	NAIA Dist. 2 First Team	1980-81
Mike Royer	NAIA Dist. 2 Honorable Mention	1981-82
Randy Dunn	NAIA Dist. 2 First Team	1981-82; 82-83; 83-84
	All-Northwest First Team	1983-84
	All-Northwest Second Team	1981-82; 82-83
	NAIA All-American	Honorable Mention 1982-83; 83-84
	NCCAA Region 7 Most Valuable	1982-83; 83-84
	NCCAA All-American	1983-84
	NAIA Dist. 2 Basketball Player of the Year	1983-84
	NAIA Dist. 2 Athlete of the Year	1983-84
	Second GFC player to have jersey retired	1983-84
	Tenth Round NBA Draft Choice	(Portland Trail Blazers) 1984
Larry Jury	NAIA District 2 First Team	1984-85
	NCCAA Region 8 First Team	1984-85
Curtis Kimbrough	NAIA District 2 Honorable Mention	1984-85; 85-86
Toby Long	NAIA District 2 Honorable Mention	1985-86
	All-Northwest Honorable Mention	1985-86
Kenny Stone	NAIA All-American Third Team	1985-86
	NAIA District 2 Basketball Player of the Year	1985-86
	NAIA District 2 First Team	1984-85; 1985-86
	All-Northwest Top Player	1985-86
	All-Northwest Second Team	1984-85
	NCCAA National All-American	1984-85; 85-86
	NCCAA Region 8 Player of the Year	1984-85; 85-86

MOST VALUABLE PLAYERS

1968-69	Gordy Loewen	1978-79	Gary Chenault
1969-70	Gordy Loewen	1979-80	Hille van der Kooy
1970-71	Gordy Loewen		Jeff Loe
1971-72	Gary Berg	1980-81	Hille van der Kooy
1972-73	Rob Wunder	1981-82	Randy Dunn
1973-74	Rob Wunder	1982-83	Randy Dunn
1974-75	Ray Willis	1983-84	Randy Dunn
1975-76	Paul Cozens	1984-85	Kenny Stone
1976-77	Paul Cozens	1985-86	Kenny Stone
1977-78	Paul Cozens		

MILLER GYM RECORDS

INDIVIDUAL

Most Points – 42	Hille van der Kooy (GFC) vs. Eastern Oregon 12/5/80
Most Field Goals – 20	Mark Wickman (Linfield) vs. GFC 1/2/78
Most Field Goals Att. – 29	Vinne Forks (SOSC) vs. Concordia 12/21/79
Best Field Goal Pct. – 1.000 (10-10)	J. R. Smith (GFC) vs. Columbia Christian 1/29/82
Most Free Throws – 15	Robin Marshall (SPU) vs. GFC 2/19/83
Most Free Throws Att. – 17	Robin Marshall (SPU) vs. GFC 2/19/83
Best Free Throw Pct. – 1.000 (12-12)	Paul Cozens (GFC) vs. Warner Pacific 1/21/78
Most Rebounds – 23	Hille van der Kooy (GFC) vs. Eastern Oregon 12/5/80
Most Assists – 13	Jeff Bieker (GFC) vs. College of Idaho 2/19/82
Most Steals – 9	Jeff Rust (Western Baptist) vs. Warner Pacific 3/5/82

TEAM

Most Points – 122	Concordia (vs. SOSC) 12/21/79
Most Field Goals – 50	Linfield (vs. GFC) 1/2/78 GFC (vs. Warner Pacific) 3/6/86
Most Field Goals Att. – 93	Northwest Nazarene (vs. Warner Pacific) 12/2/77
Best Field Goal Pct. – .714 (40-56)	GFC (vs. Columbia Christian) 1/29/82
Most Free Throws – 42	Concordia (vs. SOSC) 12/21/79
Most Free Throws Att. – 52	Concordia (vs. Warner Pacific) 12/6/81
Best Free Throw Pct. – 1.000 (13-13)	Judson Baptist (vs. Concordia) 3/5/82
Most Rebounds – 63	Northwest Nazarene (vs. Warner Pacific) 12/2/77 GFC (vs. Linfield) 12/14/79
Most Assists – 36	GFC (vs. Columbia Christian) 1/29/82
Most Steals – 26	GFC (vs. Concordia) 1/28/86

COACHES' RECORDS

Season	Coach	Win / Loss	Percentage
1965-66	Terry Haskell	9-19	.321
1966-67	Terry Haskell	7-18	.240
1967-68	Terry Haskell	6-20	.231
1968-69	Dave Berg	4-22	.154
1969-70	Dave Berg	3-23	.115
1970-71	Lorin Miller	15-13	.533
1971-72	Lorin Miller	13-12	.520
1972-73	Lorin Miller	16-15	.516
1973-74	Lorin Miller	19-11	.633
1974-75	Lorin Miller	17-13	.567
1975-76	Lorin Miller	19-8	.704
1976-77	Sam Willard	20-9	.690
1977-78	Sam Willard	15-14	.517
1978-79	Sam Willard	9-20	.310
1979-80	Sam Willard	18-12	.600
1980-81	Sam Willard	15-13	.536
1981-82	Sam Willard	12-21	.364
1982-83	Mark Vernon	15-16	.484
1983-84	Mark Vernon	17-12	.586
1984-85	Mark Vernon	27-7	.794
1985-86	Mark Vernon	21-10	.677
		297-308	.491

CAREER RECORDS

Coach	Seasons	Years	Win / Loss	Percentage
Terry Haskell	3	1965-68	22-57	.278
Dave Berg	2	1968-70	7-45	.129
Lorin Miller	6	1970-76	99-72	.579
Sam Willard	6	1976-82	89-89	.500
Mark Vernon	4	1982-86	80-45	.640



Lorin Miller (top left)
Sam Willard (top right)
Mark Vernon (right)



BRUIN SEASON SCORES

• = Away Game

GFC Opponent

1965-66

59	Lewis and Clark •	100
88	Eastern Oregon •	103
55	Oregon College of Ed. •	67
84	Alaska Methodist •	87
82	Alaska Methodist •	78
55	Alaska - Fairbanks •	73
58	Alaska - Fairbanks •	68
60	Alaska - Fairbanks •	87
65	Oregon Tech	69
69	Oregon Tech	90
79	Warner Pacific •	68
93	Warner Pacific	67
76	Oregon College of Ed.	84
66	Southern Oregon •	89
62	Southern Oregon •	75
87	Oregon College of Ed •	101
63	Eastern Oregon	68
51	Eastern Oregon	60
77	Oregon Tech •	69
57	Oregon Tech •	50
49	Cascade	66
53	Cascade •	79
62	Oregon College of Ed.	66
72	Southern Oregon	67
56	Southern Oregon	55
63	Oregon College of Ed. •	79
59	Eastern Oregon •	97
75	Eastern Oregon •	79

H:3-7 •A:6-12

SEASON: 9-19

* Won by forfeit

1966-67

64	Pacific University •	65
63	Southern Oregon •	68
58	Oregon College of Ed. •	85
91	Alaska Methodist	68
98	Alaska Methodist	75
76	Oregon Tech •	88
74	Oregon Tech •	81
79	Warner Pacific	68
91	Warner Pacific •	88
70	Oregon College of Ed •	109
86	Southern Oregon	90
70	Southern Oregon	68
50	Oregon College of Ed.	70
73	Eastern Oregon •	96
69	Eastern Oregon •	89
47	Oregon Tech	82
74	Oregon Tech	61
67	Cascade •	66
69	Cascade	75
75	Oregon College of Ed •	107
63	Southern Oregon •	94
81	Southern Oregon •	113
64	Oregon College of Ed.	79
92	Eastern Oregon	112
100	Eastern Oregon	112

H:5-7 •A:2-11

SEASON: 7-18

1967-68

73	Willamette University •	123
60	Lewis and Clark •	90
83	Eastern Oregon •	90
106	Alaska Methodist	75
76	Pacific University •	104
59	Pacific University	83
63	Oregon Tech	85
72	Oregon Tech	68
68	Oregon College of Ed.	73

GFC Opponent

84	Mt. Angel •	59
74	Mt. Angel	54
67	Southern Oregon •	102
66	Southern Oregon •	106
74	Oregon College of Ed •	82
69	Eastern Oregon •	72
73	Eastern Oregon •	96
65	Oregon Tech •	80
80	Oregon Tech •	55
73	Oregon College of Ed.	93
76	Cascade	67
71	Cascade •	73
64	Southern Oregon	87
88	Southern Oregon	92
74	Oregon College of Ed •	104
66	Eastern Oregon	82
68	Eastern Oregon	80

H:4-8 •A:2-12

SEASON: 6-20

1968-69

61	Pacific University •	84
72	Oregon College of Ed •	101
55	Oregon Tech •	82
62	Pacific University	56
59	Pacific University •	82
61	Alaska Methodist •	76
85	Alaska Methodist •	88
83	Alaska Methodist •	73
91	Oregon Tech	86
94	Oregon Tech	104
72	Oregon College of Ed •	118
54	Northwest Nazarene •	82
69	Northwest Nazarene •	77
83	Southern Oregon •	111
97	Southern Oregon •	101
63	Eastern Oregon •	88
89	Eastern Oregon •	84
72	Oregon College of Ed.	76
72	Oregon Tech •	101
66	Oregon Tech •	88
80	Oregon College of Ed •	100
55	Southern Oregon	57
64	Southern Oregon	94
71	Oregon College of Ed.	79
69	Eastern Oregon	83
78	Eastern Oregon	92

H:2-7 •A:2-15

SEASON: 4-22

1969-70

53	Willamette University •	72
83	Oregon Tech •	89
74	College of Idaho •	100
85	Alaska Methodist	95
92	Warner Pacific •	90
69	Pacific University	72
95	Oregon Tech	84
65	Oregon Tech	95
90	Oregon College of Ed •	104
50	Lewis and Clark •	112
68	Southern Oregon •	86
52	Southern Oregon •	68
52	Oregon College of Ed.	66
80	Eastern Oregon	98
57	Eastern Oregon	89
71	Oregon College of Ed. •	87
75	Oregon Tech •	86
60	Oregon Tech •	95
81	Pacific University •	91
66	Northwest Nazarene	88
58	Northwest Nazarene	72

GFC	Opponent
83 Oregon College of Ed.	119
67 Southern Oregon	94
71 Southern Oregon	90
76 Eastern Oregon •	98
81 Eastern Oregon •	75
H:1-11 •A:2-12	
SEASON: 3-23	

1970-71

68 Lewis and Clark •	83
60 Willamette University •	85
66 Eastern Oregon •	64
69 Pacific University •	83
81 Montana Tech	59
76 LaVerne	74
59 Fresno Pacific •	65
65 Fresno Pacific •	84
82 Alaska Methodist •	74
72 Alaska Methodist •	63
94 Alaska Methodist •	67
95 Lewis and Clark	85
82 Victoria	60
73 Victoria	67
80 Western Baptist •	100
102 Oregon Tech	67
91 Oregon Tech	71
94 Oregon College of Ed.	72
63 Claremont	67
66 Northwest Nazarene •	81
78 Warner Pacific •	67
71 Warner Pacific	77
82 Northwest	44
81 Western Baptist	71
65 Oregon College of Ed. •	83
76 Northwest Nazarene	82
65 Northwest Nazarene	78

NAIA District 2 Playoffs:

69 Willamette University •	103
----------------------------	-----

H:10-4 •A:5-9

SEASON: 15-13

1971-72

74 Whitman •	70
88 Whitman •	85
78 Western Baptist	58
93 Alaska Methodist	84
86 Alaska Methodist	60
70 Eastern Oregon	75
75 Azusa Pacific	81
53 Simon Fraser •	60
70 Alaska Methodist •	69
84 Linfield	80
87 Linfield •	110
77 Western Montana	84
77 Western Montana	98
83 Oregon Tech •	114
87 Southern Oregon •	92
80 Lewis-Clark St.	72
82 Warner Pacific •	77
91 Eastern Oregon •	83
66 Lewis-Clark St. •	76
76 Northwest Nazarene •	95
92 Western Baptist •	61
63 Warner Pacific	70
88 Great Falls	80
72 Northwest Nazarene	61

NAIA District 2 Playoffs:

60 Willamette University •	69
----------------------------	----

H:7-5 •A:6-7

SEASON: 13-12

1972-73

74 Linfield •	73
79 Lewis and Clark •	73
74 Willamette University •	77
84 Pacific University	94

GFC	Opponent
86 Pacific University •	91
55 Willamette University	54
45 Willamette University •	68
82 Eastern Oregon	71
68 Linfield	76
66 Linfield •	77
60 Whitman	64
80 Whitman	60
77 Pasadena •	85
67 Southern California •	68
81 Macalester •	90
60 Victoria •	62
65 Victoria •	54
51 Western Baptist	43
63 Oregon Tech	61
65 Southern Oregon	68
74 Eastern Oregon •	96
72 Lewis-Clark St.	52
78 Western Baptist •	63
84 Northwest Nazarene	72
67 Warner Pacific •	58
62 Lewis-Clark St. •	57
60 Northwest Nazarene •	73
74 Warner Pacific	63

NAIA District 2 Playoffs:

95 Linfield •	88
68 Pacific University •	67

NAIA Nationals:

62 Defiance, Ohio •	82
---------------------	----

H:8-4 •A:8-11

SEASON: 16-15

1973-74

49 Willamette University •	43
63 Lewis and Clark •	80
55 Pacific University •	57
88 Columbia Christian •	58
81 Willamette University	59
63 Willamette University •	64
88 Linfield •	86
67 Pacific University •	69
71 Eastern Oregon	64
72 Southern Oregon	53
91 Linfield	94
81 Pacific University	57
65 Puget Sound •	81
109 Columbia Christian	45
67 Warner Pacific •	72
66 Southern Oregon •	69
78 Oregon Tech •	90
88 Lewis-Clark St.	81
73 Northwest Nazarene •	63
95 Eastern Oregon •	94
72 Alaska - Fairbanks	69
91 Western Baptist •	67
70 Lewis-Clark St. •	67
63 Whitworth •	62
107 Warner Pacific	71
66 Whitworth	68
90 Northwest Nazarene	74
84 Western Baptist	71

NAIA District 2 Playoffs:

92 Pacific University •	72
54 Oregon Tech •	55

H:10-2 •A:9-9

SEASON: 19-11

1974-75

95 Linfield •	65
71 Oregon College of Ed. •	74
70 Lewis and Clark •	75
92 Linfield •	79
106 Eastern Oregon	76
95 Willamette University	68
63 Whitworth	62
91 Linfield	63
89 Pacific University	70

GFC	Opponent
93 Western Baptist	57
64 Pacific University •	69
48 Oregon Tech	67
74 Puget Sound •	86
90 Southern Oregon	70
82 Willamette University •	92
86 Lewis-Clark St.	74
84 Warner Pacific	77
75 Alaska - Fairbanks •	83
78 Alaska - Fairbanks •	82
87 Eastern Oregon •	75
72 Northwest Nazarene •	76
72 Redlands	62
73 Lewis-Clark St. •	84
59 Whitworth •	64
96 Northwest Nazarene	70
72 Oregon Tech •	74
90 Southern Oregon •	84
98 Warner Pacific •	76
86 Western Baptist •	55
NAIA District 2 Playoffs:	
56 Oregon Tech •	72
H:11-1 •A:6-12	
SEASON: 17-13	

1975-76

62 Pacific University •	68
82 Southern Oregon •	69
87 Warner Pacific •	80
89 Eastern Oregon •	59
72 Western Washington •	60
94 Pacific University •	74
78 Eastern Oregon	65
71 Pacific University •	84
91 Western Baptist	79
123 Linfield •	116
87 Linfield	89
102 Pacific University	85
72 Whitman	67
76 Alaska - Anchorage	67
75 Western Baptist •	59
87 Lewis-Clark St. •	101
95 Simon Fraser	77
81 College of Idaho	68
61 Warner Pacific	59
92 Alaska - Fairbanks	74
82 Simon Fraser •	89
97 Lewis-Clark St.	69
86 Northwest Nazarene	71
65 College of Idaho •	63
62 Northwest Nazarene •	64
82 Warner Pacific •	86
88 Whitman •	100
H:11-1 •A:8-7	
SEASON: 19-8	

1976-77

75 Lewis and Clark •	86
86 Oregon College of Ed. •	80
101 Linfield •	90
91 Linfield	84
88 Eastern Oregon	71
88 Pacific University	77
106 Pacific University •	94
90 Western Baptist	73
93 Linfield •	80
89 Willamette University •	75
100 Whitman •	95
78 Eastern Oregon •	62
72 St. Martins	81
91 Northwest Nazarene •	87
80 College of Idaho •	78
87 Willamette University	90
73 Alaska - Anchorage •	75
87 Alaska - Ahchorage •	85
81 Warner Pacific	59
91 Western Baptist •	70

GFC	Opponent
95 Lewis-Clark St.	79
92 Willamette University •	94
76 Warner Pacific •	62
77 Lewis-Clark St. •	101
97 Whitman	92
68 Puget Sound •	89
99 Northwest Nazarene	85
65 St. Martins •	76
NAIA District 2 Playoffs:	
79 Hawaii - Hilo •	85
H:8-2 •A:12-7	
SEASON: 20-9	

1977-78

103 Pacific University	88
95 Linfield	93
81 Hawaii-Hilo	87
79 Pacific University •	85
87 Linfield •	99
82 Willamette University •	72
104 Eastern Oregon	74
88 Eastern Oregon •	92
74 Seattle Pacific •	79
83 Western Baptist •	80
100 Linfield	107
75 St. Martins	82
74 Oregon College of Ed. •	77
87 Western Baptist	82
81 Portland State •	124
80 Seattle Pacific •	75
106 Pacific University	98
87 Warner Pacific •	69
67 Puget Sound •	91
72 Alaska - Fairbanks	66
83 Western Baptist •	75
69 Warner Pacific	64
84 Willamette University	78
67 Northwest Nazarene •	70
86 College of Idaho •	82
86 Oregon College of Ed.	74
76 St. Martins •	91
87 Northwest Nazarene	85
NAIA District 2 Playoffs:	
65 Oregon Tech •	79
H:9-4 •A:6-10	
SEASON: 15-14	
*Forfeited due to ineligible player	

1978-79

82 Southern Oregon •	98
68 Warner Pacific •	73
83 Pacific University •	85
84 Linfield •	107
90 Linfield	78
61 Willamette University •	60
74 College of Idaho	59
59 Central Washington	82
64 Lewis and Clark •	65
76 Hawaii Pacific •	82
74 Hawaii Pacific •	96
55 BYU - Hawaii •	54
51 BYU - Hawaii •	65
59 Eastern Oregon •	76
51 Northwest Nazarene •	69
73 Pacific University	82
74 Warner Pacific	72
69 Willamette University	73
60 Western Baptist	73
98 Eastern Oregon	97
80 Lewis and Clark	88
104 BYU - Hawaii	87
98 Western Baptist •	109
87 Pacific University •	100
61 Seattle Pacific •	80
88 Northwest Nazarene	77
70 Warner Pacific •	86

GFC	Opponent
94	Hawaii Pacific 91
74	Seattle Pacific 82
H:7-6 •A:2-14	
SEASON: 9-20	

1979-80

61	Western Baptist • 76
94	Southern Oregon • . . . 80
74	Oregon College of Ed. • 76
94	Whitman College 83
72	Willamette University . . 71
65	Seattle Pacific 73
88	Linfield 91
84	Linfield • 97
61	Lewis and Clark 65
94	Concordia 84
99	Warner Pacific 91
92	Whitman • 89
68	Central Washington • . 77
73	Willamette University • 66
90	College of Idaho 83
73	Oregon College of Ed. . 74
81	Western Baptist • 73
92	Pacific University • . . . 76
83	Eastern Oregon 67
104	Warner Pacific 88
55	Western Baptist 38
74	Seattle Pacific • 96
70	Lewis and Clark • 68
75	Northwest Nazarene • 105
63	College of Idaho • . . . 68
82	Eastern Oregon • 73
84	Northwest Nazarene . . . 77
108	Pacific University 80
91	Warner Pacific • 86

NAIA District 2 Playoffs:

67	Oregon Inst of Tech • . 69
H:10-4 •A:8-8	
SEASON: 18-12	

1980-81

77	Pacific University 72
88	Eastern Oregon State . . 99
73	Lewis and Clark 70
65	Pacific University • . . . 73
83	Seattle Pacific University 86
74	Linfield College • 83
79	Concordia College 77
67	Point Loma 82
64	Oregon College of Ed. • 99
63	Lewis and Clark • 58
87	Linfield College 74
61	Willamette University . . 59
62	Oregon College of Ed. . 80
82	Western Baptist • 76
83	Warner Pacific • 79
105	Pacific University 89
64	Concordia College • . . 79
68	Willamette University • 83
70	Lewis and Clark 67
100	Concordia College 82
33	Eastern Oregon State . . 30
61	Northwest Nazarene . . . 60
46	Northwest Nazarene • . 50
57	College of Idaho • 84
68	Eastern Oregon State • 76
38	Western Baptist 37
89	Warner Pacific 80

NAIA District 2 Playoffs:

58	Northwest Nazarene • . 61
H:12-4 •A:3-9	
SEASON: 15-13	

1981-82

62	Willamette University . . 67
80	Columbia Christian • . . 79

GFC	Opponent
66	Concordia • 84
56	Judson Baptist • 55
86	Linfield • 102
71	College of Great Falls . 101
77	Pacific University 68
95	Seattle University 83
73	Western Washington . . 83
66	Fresno Pacific 72
64	Western Baptist 73
51	Lewis and Clark • 79
78	Linfield 75
69	Western Oregon 79
76	College of Idaho • 82
77	Northwest Nazarene • . 92
86	Eastern Oregon • 96
70	Willamette University • 56
76	Warner Pacific 91
80	Western Oregon • . . . 111
74	Judson Baptist • 82
91	Columbia Christian 73
85	Eastern Oregon 102
74	Concordia 85
88	Seattle University • . . 73
76	Judson Baptist 70
88	Western Baptist • 97
75	Warner Pacific • 96
76	Western Baptist 79
101	College of Idaho 83
63	Northwest Nazarene . . . 59

NCCAA Regional Playoffs:

54	Judson Baptist 61
85	Columbia Christian 79
H:8-11 •A:4-10	
SEASON: 12-21	

1982-83

62	Seattle Pacific • 94
86	Warner Pacific • 104
61	Willamette University . . 67
65	Columbia Christian 60
63	Warner Pacific 67
73	Lewis and Clark 78
64	Pacific University • . . . 54
61	Linfield 60
68	Pacific University 38
68	Western Oregon 76
60	Lewis and Clark • 59
66	Concordia 55
92	Eastern Oregon 46
66	Western Baptist • 65
80	Hawaii - Hilo 92
78	Linfield • 66
83	Judson Baptist 60
58	Warner Pacific • 86
59	Eastern Oregon • 66
73	College of Idaho 82
71	Western Baptist 60
74	Western Oregon • 80
89	Pacific University 78
68	Willamette University • 81
80	Concordia • 71
71	Warner Pacific 72
71	Seattle Pacific 83
64	Northwest Nazarene . . . 67
85	Judson Baptist • 71

NCCAA Regional Playoffs:

46	Western Baptist 35
69	Warner Pacific • 75
H:9-9 •A:6-7	
SEASON: 15-16	

1983-84

93	Judson Baptist 78
74	Western Oregon • 72
90	Warner Pacific • 100
82	Linfield • 68

GFC	Opponent
77 Western Baptist •	67
72 Willamette University •	82
78 Eastern Oregon	67
64 Lewis and Clark	66
72 Lewis and Clark •	58
103 Linfield	90
77 Concordia •	76
85 Willamette University	74
58 Western Oregon •	80
77 Columbia Christian •	63
70 Western Baptist •	71
78 Northwest Nazarene	67
79 Warner Pacific	72
90 Multnomah	66
65 Western Oregon	75
81 Columbia Christian	78
80 Concordia	89
98 Judson Baptist •	66
76 College of Idaho •	85
103 Northwest Nazarene •	113
67 Western Baptist	54
95 Northwest Christian	81
42 Warner Pacific •	43
NAIA District 2 Playoffs:	
72 Western Oregon •	86
NCCAA Regional Playoffs:	
92 Concordia •	101
H:10-3 •A:7-9	
SEASON: 17-12	

1984-85

90 Columbia Christian •	74
72 Western Oregon State •	79
71 Willamette University •	52
91 Linfield College	61
88 Pacific University	52
78 Western Oregon State	64
77 Oregon Tech •	95
107 U of Cal - San Diego •	93
80 Linfield •	76
82 Willamette University	80
73 Pacific University •	56
55 Western Baptist •	68
88 Columbia Christian •	80
84 Concordia •	77
70 Northwest Nazarene	64
80 Warner Pacific •	78
74 Lewis and Clark	61
82 Eastern Oregon State	61
73 Western Oregon State •	70
52 Western Baptist	50
91 Warner Pacific	80
88 Concordia	70
74 College of Idaho •	94
97 Northwest Nazarene •	106
105 Eastern Oregon State •	77
93 Columbia Christian	82
NAIA District 2 Playoffs:	
50 Western Baptist	47
71 Western Oregon State	57
53 College of Idaho •	61
NCCAA Regional Playoffs:	
74 Columbia Christian	67
52 Western Baptist	50
NCCAA Nationals:	
97 Olivet Nazarene •	77
86 Point Loma College •	95
70 Taylor University •	55
H:15-0 •A:12-7	
SEASON: 27-7	

1985-86

80 Central Washington •	82
78 Whitworth •	74
76 Univ. Puget Sound •	93
71 Willamette •	57

GFC	Opponent
93 Pacific	63
87 Western Oregon	76
73 Western Baptist •	75
113 Concordia •	69
68 Linfield •	81
88 Pacific University •	78
75 Central Washington •	79
88 Pacific Lutheran •	71
76 St. Martin's •	69
83 Western Oregon •	74
97 Columbia Christian •	53
83 Northwest Nazarene	77
76 College of Idaho	68
95 Eastern Oregon •	59
107 Concordia	70
78 College of Idaho •	90
73 Northwest Nazarene •	78
97 Eastern Oregon	61
75 Linfield	80
83 Columbia Christian	66
106 Western Oregon	90
101 Concordia •	91
73 Warner Pacific	65
NAIA District 2 Playoffs:	
66 Warner Pacific •	56
67 Oregon Inst. of Tech. •	76
NCCAA Regional Playoffs:	
102 Warner Pacific	85
61 Western Baptist •	65
H: 10-1 •A: 11-9	
SEASON: 21-10	

BRUIN OPPONENTS



COLLEGE OF IDAHO

**Jan. 16 in Newberg
Feb. 7 in Nampa**

Location:
Caldwell, Idaho 83605
Established: 1891
Enrollment: 750
Conference: NAIA
Independent
Colors: Purple and Gold
Nickname: Coyotes

Head Coach: Martin Holly
Coach's record in six years: 116-32
1985-86 record: 23-7
Gymnasium: O'Conner Fieldhouse
(3,000)
Sports Information Director:
Dave Hahn
SID Office: (208) 459-5377
SID Home: (208) 454-9285
Series record: GFC 7, College of
Idaho 9
Last year: GFC won 76-68 in Newberg,
GFC lost 90-78 in Caldwell
Lettermen lost: 8
Lettermen back: 4
Players to watch:
Kevin Hulse, 6-7 forward
Lowell Cisowski, 6-3 guard/forward
Outlook: "Rebuilding season, but good
recruiting. Depends how talent
comes together. . . ."



COLUMBIA CHRISTIAN COLLEGE

**Jan. 9 in Newberg
Feb. 21 in Portland**

Location:
Portland, Ore. 97211
Established: 1947
Enrollment: 270
Conference: NAIA
Independent
Colors: Red and White
Nickname: Clippers

Head Coach: Jim Flint
Coach's Record in seven years: 70-129
1985-86 record: 4-23
Gymnasium: Men's Gym (600)
Sports Information Director: Jim Flint
SID Office: (503) 255-7060, ext. 259
SID Home: (503) 253-3515
Series record: GFC 13, Columbia
Christian 0
Last year: GFC won 97-53 in Portland
won 83-66 in Newberg
Lettermen lost: 5
Lettermen back: 7
Players to watch:
Millard Bell, 6-4 forward
Dan Anderson, 6-6 forward
Outlook: "Much improved, much more
competitive and consistent . . ."



CONCORDIA COLLEGE

**Jan. 30 in Portland
Feb. 17 in Newberg
Participant:
NAIA Dist. 2
Tournament
Dec. 3-6**

Location:
Portland, Ore. 97211
Established: 1950
Enrollment: 400
Conference: NAIA
Independent
Colors: Navy Blue and
White
Nickname: Cavaliers

Head Coach: Joel Schuldheisz
Coach's record in two years: 15-38
1985-86 record: 3-25
Gymnasium: Concordia Gymnasium
(1,200)
Sports Information Director:
Joel Schuldheisz
SID Office: (503) 288-9371, ext. 237
SID Home: (503) 282-4640
Series record: 11-5
Last year: GFC won 113-69 in Salem,
won 107-70 in Newberg, won
101-91 in Portland
Lettermen lost: 4
Lettermen back: 6
Players to watch:
Mike Bertels, 6-5 forward
Larry Nelson, 5-11 forward
Rob Oskey, 6-4 forward
Outlook: "Rebuilding year, more com-
petitive . . ."



EASTERN OREGON STATE COLLEGE

**Jan. 24 in Newberg
Feb. 13 in La Grande**

Location:

La Grande, Ore. 97850

Established: 1929

Enrollment: 1,550

Conference: Evergreen

Colors: Royal Blue and
Gold

Nickname: Mountaineers

Head Coach: Dick Satterlee

Coach's record in four years: 15-87

1985-86 record: 4-20

Gymnasium: Quinn Coliseum (2,500)

Sports Information Director: Rick Souza

SID Office: (503) 963-1575

SID Home: (503) 963-0807

Series record: 24-29

Last year: GFC won 95-59 in La
Grande, won 97-61 in Newberg

Lettermen lost: 5

Lettermen back: 7

Players to watch:

Cory Ackerman, 6-5 forward

Jim Worthington, 6-8 center

Outlook: "Strongest team we've put
together . . ."



HUMBOLDT STATE UNIVERSITY

Participant:

**California State
University -
Chico
Tournament
Dec. 28 in Chico**

Location:

Arcata, Calif. 95521

Established: 1913

Enrollment: 6,000

Conference: NCAA (II),
NCAC

Colors: Green and Gold

Nickname: Lumberjacks

Head Coach: Tom Weed

Coach's Record in six years: 71-60

1985-86 record: 12-18

Gymnasium: East Gymnasium (1,500)

Sports Information Director:

Bryan Dangerfield

SID Office: (707) 826-3631

SID Home: (707) 822-2187

Series record: Meeting for first time

Last year: Did not play

Lettermen lost: 6

Lettermen back: 5

Players to watch:

Lloyd Klamann, 5-11 guard

Jerry Bush, 6-0 guard

Outlook: "Hope to improve over last
year's record. Have tough pre-
season schedule. Hope to continue
to go to the Northern California Ath-
letic Conference post season tourna-
ment. Have new and better
experience . . ."



LINFIELD COLLEGE

Participant:

**NAIA Tip-Off
Tournament**

**Dec. 5 in Forest
Grove**

Dec. 9 in

McMinnville

Jan. 20 in Newberg

Location:

McMinnville, Ore. 97128

Established: 1849

Enrollment: 1,098

Conference: Northwest

Colors: Cardinal and
Purple

Nickname: Wildcats

Head Coach: Tim Miller

Coach's record in five years: 64-69

1985-86 record: 15-12

Gymnasium: Riley Gymnasium (1,250)

Sports Information Director: Larry Luta

SID Office: (503) 472-4121, ext. 498

SID Home: (503) 434-5403

Series record: GFC 21, Linfield 14

Last year: GFC lost 81-68 in McMinn-
ville, lost 80-75 in Newberg

Lettermen lost: 3

Lettermen back: 8

Players to watch:

Dave Craven, 6-6 center

Brian Ritte, 6-4 forward

Outlook: "It's a case of the team playing
well together. We lack real height.
We'll just have to play good
basketball . . ."



NORTHWEST COLLEGE

**Jan. 23 in Newberg
Jan. 31 in Kirkland**

Location:
Kirkland, Wash. 98033
Established: 1939
Enrollment: 678
Conference:
NAIA District 1,
NCCAA Division 2
Colors: Blue and Gold
Nickname: Eagles

Head Coach: John Brown
Coach's record in five years: 68-51
1985-86 record: 19-13
Gymnasium: N.W. Pavilion (400)
Sports Information Director:
John Brown
SID Office: (206) 822-8266, ext. 253
SID Home: (206) 822-9801
Series record: Meeting for the first time
Last year: Did not play
Lettermen lost: 6
Lettermen back: 4
Players to watch:
Bill Burger, 6-7 guard
Jay Andersen, 6-8 center
Outlook: "Competitive, young team
that will be learning lots of
lessons . . ."



NORTHWEST NAZARENE COLLEGE

**Jan. 17 in Newberg
Feb. 6 in Nampa**

Location:
Nampa, Idaho 83651
Established: 1913
Enrollment: 1,075
Conference: NAIA
Independent
Colors: Orange and Black
Nickname: Crusaders

Head Coach: Garry Matlock
Coach's record in five years: 69-45
1985-86 record: 19-10
Gymnasium: Montgomery Field House
(4,000)
Sports Information Director: Gil Craken
SID Office: (208) 467-8531
SID Home: (208) 466-4377
Series record: GFC 16, NNC 21
Last year: GFC won 83-77 in Newberg,
lost 78-73 in Nampa
Lettermen lost: 5
Lettermen back: 5
Players to watch:
Kelly Bokn, 6-0 guard
Norm Parrish, 6-4 forward
Maynard Spell, 6-4 forward
Outlook: "Small, but quick; will play a
fast tempo game but not a run and
shoot game . . ."



PACIFIC UNIVERSITY

**Participant:
NAIA Dist. 2 Tip-
Off Tournament
Dec. 5-6 in Forest
Grove**

Location:
Forest Grove, Ore. 97116
Established: 1849
Enrollment: 1,100
Conference: Northwest
Colors: Red, Black, and
White
Nickname: Boxers

Head Coach: Bob Bonn
Coach's record in two years: 13-39
1985-86 record: 7-19
Gymnasium: Pacific Athletic Center
(2,000)
Sports Information Director:
Ken Schumann
SID Office: (503) 357-6151, ext. 2380
SID Home: (503) 626-8359
Series record: GFC 23, Pacific 20
Last year: GFC won 93-63 in Newberg,
won 88-78 in Forest Grove
Lettermen lost: 4
Lettermen back: 7
Players to watch:
Andrew Eby, 6-9 center
Brian VanWagner, 6-4 forward
Mark Ward, 6-0 guard
Outlook: "We should have 10 or 12
players who are very close in talent;
that will make for a very competitive
team . . ."



ST. MARTIN'S COLLEGE

Jan. 6 in Newberg

Location:
Lacey, Wash. 98503
Established: 1895
Enrollment: 550
Conference: NAIA
District 1
Colors: Red and White
Nickname: Saints

Head Coach: Bob Grisham
Coach's first year
1985-86 record: 11-19
Gymnasium: Pavilion (2,000)
Sports Information Director:
Adolfo Capestany
SID Office: (206) 438-4372
SID Home: (206) 943-5565
Series record: GFC 1, St. Martin's 4
Last year: GFC won 76-69 in Lacey
Lettermen lost: 4
Lettermen back: 6
Players to watch:
Marshall Koukal, 6-4 forward
Brad Erben, 6-8 center
Outlook: "Rebuilding program; have
been down for the past three years,
hoping the new recruits will add extra
depth, continue on from there . . ."



WARNER PACIFIC COLLEGE

**Dec. 13 in Newberg
Jan. 12 in Portland**

Location:
Portland, Ore. 97215
Established: 1937
Enrollment: 415
Conference: NAIA Dis-
trict 2 Independent
Colors: Columbia Blue,
Red, and White
Nickname: Knights

Head Coach: Gary Bays
Coach's record in ten years: 133-138
1985-86 record: 19-13
Gymnasium: C.C. Perry Gym (1,000)
Sports Information Director:
Mike Booth
SID Office: (503) 775-4366, ext. 751
SID Home: (503) 694-2322
Series record: GFC 30, WPC 15
Last year: GFC won 73-65 in Newberg,
won 66-56 in Portland, won 102-85
in Newberg
Lettermen lost: 3
Lettermen back: 4
Players to watch:
Bill Edwardson, 6-8 center
Shane Shelton, 6-4 forward
Jim Brinkerhoff, 6-4 guard
Outlook: "Will be a team that will con-
tend for the NAIA District 2 title . . ."



WESTERN BAPTIST COLLEGE

**Nov. 22 in Salem
Feb. 3 in Newberg**

Location:
Salem, Ore. 97309
Established: 1935
Enrollment: 300
Conference: NAIA
Independent
Colors: Blue and Gold
Nickname: Warriors

Head Coach: Tim Collins
Coach's record in three years 66-42
1985-86 record: 29-10
Gymnasium: C.E. Jeffers Sports Center
(1,200)
Sports Information Director:
Larissa Beals
SID Office: (503) 581-8600, ext. 186
SID Home: (503) 370-8634
Series record: GFC 28, WBC 11
Last year: GFC lost 75-73 in Salem,
lost 65-61 in Salem
Lettermen lost: 5
Lettermen back: 6
Players to watch:
Zach Harris, 6-3 guard
Tony Mendazona, 5-10 guard
Darren Shryock, 6-5 forward
Outlook: "The Warriors will look to
capture another district playoff
berth . . ."



WESTERN OREGON STATE COLLEGE

Jan. 10 in Newberg
Feb. 20 in Monmouth

Location:
Monmouth, Ore. 97361
Established: 1882
Enrollment: 3,400
Conference: Evergreen
Colors: Crimson and Gray
Nickname: Wolves

Head Coach: Mark Adams
Coach's record in first year: 10-19
1985-86 record: 10-19
Gymnasium: P.E. Building (3,600)
Sports Information Director:
Ron Richman
SID Office: (503) 838-1220, ext. 208
SID Home: (503) 688-8673
Series record: GFC 10, WOSC 38
Last year: GFC won 87-76 in Newberg,
won 83-74 in Monmouth, won
106-90 in Newberg
Lettermen lost: 6
Lettermen back: 6
Players to watch:
Dan Hummel, 6-6 forward
Melvin Haynes, 6-6 forward
Royal Francois, 5-10 guard
Outlook: "Improved overall, emphasis
on running game and pressure
defense . . ."



WILLAMETTE UNIVERSITY

Dec. 2 in Newberg

Location:
Salem, Ore. 97301
Established: 1842
Enrollment: 1,300
Conference: Northwest
Colors: Cardinal Red, Old
Gold
Nickname: Bearcats

Head Coach: John Roche
Coach's record in first year: 12-14
1985-86 record: 12-14
Gymnasium: Cone Fieldhouse, Sparks
Center (2,800)
Sports Information Director:
Jane Reeder
SID Office: (503) 370-6110
SID Home: (503) 585-6837
Series record: GFC 17, WU 16
Last year: GFC won 71-57 in Salem
Lettermen lost: 5
Lettermen back: 7
Players to watch:
Erik Fairchild, 6-4 forward
Mike Shephard, 6-2 guard
Erick Siffert, 6-0 guard
Outlook: "Doubled wins last year and
anticipate building on that
record . . ."

CALIFORNIA STATE UNIVERSITY-CHICO TOURNAMENT PARTICIPANTS

CALIFORNIA STATE UNIVERSITY-CHICO

Location: Chico, Calif.
95929
Enrollment: 13,000
Conference: NCAA (II),
No. Cal. Ath. Conf.
Colors: Cardinal and
White
Nickname: Wildcats
Coach: Pete Mathiesen

CALIFORNIA POLY STATE UNIVERSITY

Location: San Luis
Obispo, Calif. 93407
Enrollment: 15,000
Conference: NCAA (II),
CCAA (I), WFC
Colors: Green and Gold
Nickname: Mustangs
Coach: Steven Beason

UNIVERSITY OF ALASKA, FAIRBANKS

Location: Anchorage,
Alaska 99701
Enrollment: 5,000
Conference: NCAA (II),
Great Northwest
Colors: Green and Gold
Nickname: Seawolves
Coach: George
Roderick

CALIFORNIA LUTHERAN UNIVERSITY

Location: Thousand
Oaks, Calif. 91360
Enrollment: 1,250
Conference: NAIA (I)
Colors: Purple and
Gold
Nickname: Kingsmen
Coach: Larry Lopez

WHITTIER COLLEGE

Location: Whittier, Calif.
90608
Enrollment: 1,200
Conference: NCAA (II),
SCIAC
Colors: Purple and
Gold
Nickname: Poets
Coach: Dave Jacobs

CARROLL COLLEGE

Location: Helena,
Montana 59601
Enrollment: 1,200
Conference: NAIA (II),
Frontier
Colors: Purple, Gold
and White
Nickname: Fighting
Saints
Coach: Jim Kampen

COVERING THE BRUINS

Facilities for the working press covering Bruin basketball are provided at the courtside press section on the west side of Miller Gymnasium. Available for each game are team rosters, starting lineups, and pertinent pregame information, including accumulative statistics for the Bruins up to each game. Press box service for each home contest includes quick team and individual statistics at halftime and complete statistics immediately following the game.

Working space and telephones for members of the press desiring them are available in the administrative area off the upper lobby. A courtside telephone also is available. Dressing rooms for both teams are on the lower level, south side.

George Fox College appreciates the cooperation it has shared with the news media. This book has been prepared as a service for area newspapers, radio and television stations, and wire services.

All requests for information, statistics, photographs, and press passes should be directed to Barry Hubbell, Sports Information Director, George Fox College, Newberg, Oregon 97132. Office phone: (503) 538-8383, ext. 220. Home phone: (503) 538-4332. Athletic Department phone: (503) 538-8383, ext. 249.

WILLAMETTE VALLEY NEWS MEDIA

Newspapers

Newberg Graphic
Newberg
Steve Irvin
538-2181

Statesman - Journal
Salem
Brian Wong
399-6700
1-800-452-2511

Oregonian
Portland
Jeff Wohler
John Nolen
Bill Mulflur
221-8161
1-800-452-1420
1-800-826-0376

Wire Services

Associated Press
228-2169
1-800-452-3501

United Press International
226-2644
1-800-452-6009

Television

KATU-TV
Portland
Steve Arena
231-4268

KGW-TV
Portland
Scott Lynn
Carl Click
226-5119, 226-5111

KOIN-TV
Portland
Rick Metsger
Pat Hellberg
243-6614, 243-6640

KPTV
Portland
Michael O'Brien
Phil Cassidy
222-9921

KWVT
Salem
Dave Ackerly
390-2202

Bruin Cable Network
TCI Cable - GFC
538-8383, Ext. 360

Radio

KCYX
Steve Kenyon
McMinnville
472-2151, 538-4343
KFOX (FM)
George Fox College
538-8383, ext. 324



1986-87 GEORGE FOX COLLEGE BRUIN BASKETBALL

Nov. 22	Western Baptist College	Salem
Dec. 2	Willamette University	Newberg
5-6	NAIA Tip-Off Tournament	Forest Grove (GFC vs. Linfield; Pacific vs. Concordia)
9	Linfield College	McMinnville
13	Warner Pacific College	Newberg
28-30	California State University - Chico Tournament	Chico (California Lutheran, Cal Poly - San Luis Obispo, Whittier, Chico State, GFC, Alaska - Fairbanks, Humboldt State, Carroll)
Jan. 6	St. Martin's College	Newberg
9	Columbia Christian College*	Newberg
10	Western Oregon State College*	Newberg
12	Warner Pacific College	Portland
16	College of Idaho*	Newberg
17	Northwest Nazarene College*	Newberg
20	Linfield College	Newberg
23	Northwest College	Newberg
24	Eastern Oregon State College,* 8:00 p.m.	Newberg (Homecoming)
30	Concordia College*	Portland
31	Northwest College	Kirkland
Feb. 3	Western Baptist College	Newberg
6	Northwest Nazarene College,* 8:00 p.m.	Nampa
7	College of Idaho,* 6:00 p.m.	Nampa
13	Eastern Oregon State College*	LaGrande
17	Concordia College*	Newberg
20	Western Oregon State College*	Monmouth
21	Columbia Christian College*	Portland
25, 28, Mar. 3	NAIA District 2 Playoffs	TBA
Mar. 5, 7	NCCAA Region 8 Playoffs	TBA
11-17	NAIA Men's National Championships	Kansas City
	*NAIA District 2 East Division Games	

All games are at 7:30 p.m. except as noted.

ON THE COVER

NAIA ALL-AMERICAN KENNY STONE returns for his senior year after winning every Northwest small college basketball award possible as a junior. The 6-6 forward is NAIA District 2's basketball Player of the Year and ran away in the balloting as the Northwest's Top Player. He led the Northwest in blocked shots (112) and the District in rebounds (10.6), also finishing third in scoring (20.6) for the best combination finish. The Bruin "franchise," Stone already owns five GFC records. Details inside, page 10. (Photo by Mike Puckett, *The Daily News*, Longview, Wash.)