

1988

1988 Program

George Fox University Archives

Follow this and additional works at: https://digitalcommons.georgefox.edu/athletics_menbasketball

Recommended Citation

George Fox University Archives, "1988 Program" (1988). *Men's Basketball*. 112.
https://digitalcommons.georgefox.edu/athletics_menbasketball/112

This Program is brought to you for free and open access by the George Fox University Athletics at Digital Commons @ George Fox University. It has been accepted for inclusion in Men's Basketball by an authorized administrator of Digital Commons @ George Fox University. For more information, please contact arolfe@georgefox.edu.

BRUIN BASKETBALL

**NORTHWEST
CHRISTIAN
COLLEGE
'CRUSADERS'**

January 28, 1989

Senior Guard
Brent Peterson



**GEORGE FOX COLLEGE
MILLER GYMNASIUM • WHEELER SPORTS CENTER
NEWBERG, OREGON • 7:30 P.M.**

ABOUT GEORGE FOX COLLEGE

George Fox College is the outgrowth of a desire by early Willamette Valley Quaker settlers who established Pacific Academy in 1885 for the Christian education of their children. The college division was organized in 1891 to provide more advanced instruction for students. In 1949, because of the many colleges in the Northwest with Pacific in their name, the College was renamed George Fox in honor of the founder of the Friends (Quaker) Church. The College is governed by a 42-member Board of Trustees elected by Northwest Yearly Meeting of Friends Church, which comprises more than 8,000 members in 58 churches in Oregon, Washington, and Idaho.

The 60-acre rural, tree-shaded campus a half-hour drive from Portland has undergone major expansion in the last few years with 10 new buildings constructed. The \$2.25 million M. J. Murdock Learning Resource Center was opened this fall.

College enrollment is 820.

Accredited by the Northwest Association of Secondary and Higher Schools, the College offers 28 majors in seven divisions: Education, Fine and Applied Arts, Language Arts, Natural Science, Religion, Social Science, and Physical Education. George Fox is one of 13 members of the national Christian College Consortium. The College has a student-faculty ratio of 13/1.

George Fox students come from 17 states and 8 foreign countries. Nearly 40 religious denominations are represented on campus.

Alumni of George Fox are primarily in service-oriented vocations of Christian ministries, education, social work, and medical fields. The College's most prominent alumnus is the late President Herbert Hoover, who attended Pacific Academy.

GFC ATHLETICS

Intercollegiate athletics is an integral part of the overall education program at George Fox. Men's varsity athletic teams represent the College in baseball, basketball, track, cross country, and soccer. Women students compete in volleyball, basketball, track, softball, and cross country.

George Fox College competes as an independent on the varsity level. Its schedules are coordinated with the Northwest Conference and with other independents in the Northwest. George Fox is a member of the National Association of Intercollegiate Athletics (NAIA), District 2, and in some sports, the National Christian College Athletic Association, Region 8.

For students not participating in the varsity program, GFC has a complete intramural program including flag football, basketball, volleyball, softball, racquetball, and tennis.

Athletic facilities include the Coleman H. Wheeler Center for Sports and Physical Education; Colcord Field, which includes a football/soccer field and new all-weather rubberized track; and tennis courts. An athletic field complex containing baseball diamond, softball fields, soccer field, and archery range is being renovated and will be opened this spring as the Curtis and Margaret Morse Athletic Fields.

Wheeler Center, completed in 1977 in a \$2.7 million project, includes the James and Lila Miller Gymnasium with three basketball courts and seating for up to 2,500; multipurpose, class, and weight rooms; faculty and administrative offices; handball courts; dressing and therapy rooms.



"Sincerity"

Attrell's

NEWBERG FUNERAL CHAPEL—
BROWN FUNERAL HOME
207 Villa Road



- Cards & Gifts for every occasion
- Accessories for Home & Office

- Bibles
- Featuring: Helen Steiner Rice cards

Dents
Stationery Store
502 E. First 538-2079



INSURANCE EXCHANGE INC.

Monte Coleman



Bern Coleman

Office: 538-2148
105 NORTH MERIDIAN NEWBERG, OREGON



Family Restaurant
Downtown Newberg
538-2600

- Breakfast
- Lunch
- Dinner

Banquets up to 50

- Antiques
- Art
- Automotive Nostalgia

MAC RENTAL

"We want to be your rental store"

2800 Lafayette Ave.
McMinnville, OR 97128
472-6223

408 W. First St.
Newberg, OR 97132
538-7352

GLEN VERGETS (503) 538-5460
MARK VERGETS

NEWBERG HARDWARE

2100 Portland Road
Newberg, Oregon 97132



FRED L. CASEY, Broker
PAT CASEY, Sales Associate
BRIAN CASEY, Sales Associate

Farms, Homes, Acreages, Appraisals
538-7304 • 2414 Portland Rd., Newberg



COUPON

1 Small Size Yogurt with
1 Topping for 99¢
(Reg. \$1.25)
With This Coupon
(Not Valid with Other Offers)

On 99W across
from Kentucky Fried Chicken
Good Through March 1989



THE BARCLAY PRESS

Quality Printing and Publishing

600 E. Third St., Newberg
538-7345

THIS IS WHERE THE GAME IS PLAYED

George Fox College is in its twelfth year in the Coleman H. Wheeler Center for Sports and Physical Education. Completed in June 1977, the \$2.7 million, 55,000-square-foot complex is the College's largest building. It contains the James and Lila Miller Gymnasium, the Bruin home court.

The sports center was designed by noted architect Pietro Beluschi, with a wooded canyon setting chosen as the center's location. The building features wood products and a large window area overlooking the adjacent natural terrain.

Three times larger than Hester Gymnasium, which it replaced, the Wheeler Center features a 116 x 174-foot gymnasium with three basketball courts and seating for 2,500 spectators. The gymnasium ceilings are 32 feet over the hardwood maple floor. The gym provides three volleyball courts and ten badminton courts.

The building is entered on two levels—ground level on the east side through the nine doors for the general public and after crossing a 200-foot bridge; and on the second floor on the west side for campus personnel. There is a two-floor lobby.

Contained on the upper level are athletic administration and faculty offices, staff room, and class, weight, and multipurpose rooms. The lower level contains a concession area and ticket sales area, dressing rooms, team rooms, laundry, equipment-issuing room, and storage space. An east wing of the building houses two handball courts.

The building is named for long-time Oregon lumberman Coleman H. Wheeler, former chairman of the board of Willamette Industries. The gymnasium is named for board member James Miller and his wife, Lila. He is the former president of Cascadia Lumber Co. The building was dedicated Oct. 17, 1977.

NAIA DISTRICT 2

George Fox College men's athletic teams compete in District 2 of the National Association of Intercollegiate Athletics (NAIA). Fourteen teams make up the district, all but two within Oregon.

In basketball, divisions have been created involving all 14 colleges, with organization into east and west divisions. Members of the East Division are College of Idaho, Columbia Christian, Concordia College, George Fox College, Northwest Nazarene College, Warner Pacific College, and Western Baptist College. West Division members are Eastern Oregon State, Linfield College, Oregon Institute of Technology, Pacific University, Southern Oregon State College, Western Oregon State College and Willamette University.

This new alignment, approved this fall by basketball coaches, puts Christian colleges and independents in the East Division, and Northwest Conference and state schools in the West.

All teams will have a post-season game to determine the right to represent NAIA District 2 at the national NAIA championships. The district now has a "sub-playoff" system prior to the regular playoffs. This will involve all teams but the top team in each division. The other six teams will be paired 2-7, 3-6, 4-5 for the sub-playoff contests with those games determining three winners to be with the top team in the regular playoffs.

The remaining top four teams in each division will then be cross-seeded with the top four teams from the other division.

Standings within each division will be based upon the record with other teams in the division. If there is a tie, results of competition between those schools involved will be considered. If there still is a tie, then overall NAIA District 2 records will be used to determine ranking, based on a system of awarding points for the strength of each team met.

HURFORD Tax Service

Myrna Roybal
Virginia Millage



809 East First Street
Newberg, OR 97132
503/538-0616

Office Telephone
(503) 538-2800

Guest Telephones
(503) 538-1392
(503) 583-1393

TOWNE & COUNTRY MOTEL

COLOR TV • PHONES • AIR CONDITIONED
CENTRAL LOCATION

1864 PORTLAND RD. NEWBERG, OREGON 97132

FOR
FAST SERVICE
QUALITY FOOD
IT'S



1814 Portland Road

538-9625

HOPP INSURANCE AGENCY

Ray Hopp • Randy Hopp



804 E. First St., Newberg, Oregon
Phone: 538-3421, 538-2901

YOUNG REALTY



JOE YOUNG
BROKER



BUS. 538-9461
RES. 538-2722

2504A PORTLAND RD.
NEWBERG, OR 97132

Open 7 days
Sunday Movies — 3 for \$5.00

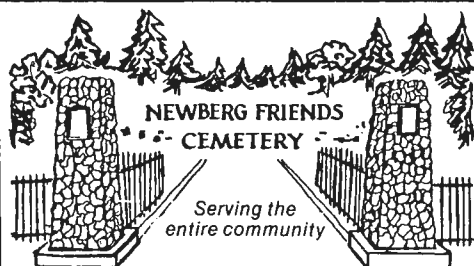


VIDEO COLLECTION

• Movies & Equipment
• Rental
• Sales



619 E. Hancock
Newberg, OR 97132 (503) 538-5289



For more information call
538-8381 or 538-8382



1 Hr. Photo Processing
Passport Photos

THE PHOTO CO.

Across from Newberg Sentry 538-2721

Go, Bruins!

yamhills
GALLERY

Jewelry, cards,
fine gifts
SPRINGBROOK PLAZA
Newberg, OR 97132
503-538-1311

BRUINS PARTICIPATE IN NAIA



The National Association of Intercollegiate Athletics (NAIA) is a completely autonomous association that administers programs leading to national championships in 11 events for nearly 500 accredited four-year colleges and universities in 32 geographical districts spread over the 50 states and Canada.

Established in 1940 as the National Association of Intercollegiate Basketball the NAIB evolved from the institution of a "National Small College Basketball Tournament" that was inaugurated in 1937. In 1952, the NAIB expanded to include tennis, outdoor track, and golf, and that year the organization was renamed the NAIA.

Since that time the NAIA has further enlarged to encompass football (two divisions were formed in 1970), cross country, baseball, and swimming, which were added to the NAIA championship program in 1956, wrestling (1958), soccer (1959), and indoor track (1966). In August of 1980 the NAIA, after a two-year study, initiated championships for women in the newly organized NAIA Women's Division. Ten championships are offered.

NAIA national headquarters and staff are located in Kansas City, Missouri. The NAIA is governed by two bodies. The Council of Presidents, composed of one president from each district, is responsible for fiscal matters, academic standards, and supervision of the national staff. George Fox College president Edward F. Stevens represents NAIA District 2 and is one of five U.S. college presidents selected to serve on the NAIA Council of Presidents Executive Committee. The 10-person Executive Committee, elected by the membership, is responsible for organizing championship events and overseeing the committees and associations.

Eligibility rules within the NAIA govern all play in all sports recognized by the Association, not just post-season play. All eligibility guidelines must be adhered to by all members, including those holding dual affiliation with other associations.

The NAIA clearly outlines its own responsibilities and those of its members: a sound athletic program, administered and controlled by those responsible for the administration of the college or university. The NAIA's basic premise is that the athletic program is a basic component of the overall general educational process, and not an entity apart.

Member institutions must conduct their intercollegiate athletic programs to the standards of the regulatory Association in which they hold memberships, and the NAIA. They must pay the annual membership dues and be in support of the policies of the Association. Where institutional rules and standards are more strict than those of the regulatory group or the NAIA, those rules and standards of the institution are recognized and supported by the NAIA.



Ray Clevenger

Office: 538-3168

P.O. Box 191 • 2104 Portland Road
Newberg, OR 97132



Gainers / Four Seasons
FLOWERS & GIFTS
117 N. BLAINE (503) 538-9252
NEWBERG, OREGON 97132



DAVE & DEBBIE DANIELS
Owners



CHEHALEM PRINTING
FOR ALL YOUR PRINTING NEEDS

- TYPESETTING • QUICK PRINT
- COLOR PRINTING

410 E. FIRST **538-6840** NEWBERG



McPike
Sentry
MARKETS

Just Your Size

Newberg Sentry
1510 East First
Newberg, Oregon 97132

RICHARD KOCH
Manager

(503) 538-5536

Marriott
SUBway

"Good Luck Bruins"

This coupon good for one free order of french fries when the Bruins score more than 100 points and win!

Good for next working day; 10:00-11:00 a.m.



Rent any movie at our regular price and with this coupon get your second movie for only 49¢

Phone 538-0441
Springbrook Plaza



CUSTOM BODY & PAINT
FRAME ALIGNMENT

NEWBERG
BODY & PAINT

24 HR. TOWING • FREE ESTIMATES
"A TINY CRASH OR A TOTAL SMASH"
108 S. MERIDIAN
NEWBERG, OR 97132 (503) 538-5381



CLIMAX
Portable Machine Tools, Inc.

TONIGHT'S TEAM ROSTERS

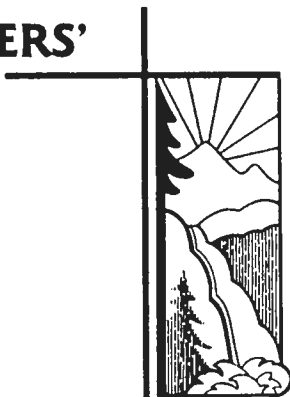
GEORGE FOX COLLEGE 'BRUINS'



... FROM NEWBERG, OREGON
Established in 1891. Enrollment: 820
Colors: Old Gold and Navy Blue
Conference: NAIA Independent
Head Coach: Mark Vernon

No.	Name	Pos.	Ht.	Wt.	Age	Class	Exp.	Hometown
10	Tim Harris	G	6-2	170	18	Fr.	HS	Redmond, Ore.
12	Tim Jacobson	G	6-2	150	20	So.	IV	Kasilof, Alaska
14	Brent Peterson	G	6-0	170	21	Sr.	3V	Bozeman, Mont.
20	Jim White	G	6-2	165	20	Jr.	IV	Kent, Wash.
22	Jeff Richards	G	6-1	180	22	Sr.	2JC/IV	Beaverton, Ore.
24	Jon Hagen	F/G	6-3	180	18	Fr.	HS	Newberg, Ore.
30	Pat Casey	F	6-2	200	29	Sr.	3V	Newberg, Ore.
32	Chris Patoine	F	6-5	195	20	Jr.	2JC	Sutherlin, Ore.
34	Rich Schlachter	F	6-4	210	20	Jr.	2V	Newberg, Ore.
40	Kurt Ronnow	F	6-4	195	18	Fr.	HS	Molalla, Ore.
42	Tim Hagen	F	6-6	185	21	So.	HS	Newberg, Ore.
50	Matt Milligan	F	6-4	185	18	Fr.	HS	Salem, Ore.
52	Wade Webberley	C	6-7	195	18	Fr.	HS	LaCenter, Wash.

NORTHWEST CHRISTIAN COLLEGE 'CRUSADERS'



... FROM EUGENE, OREGON
Established in 1895. Enrollment: 215
Colors: Blue and Gold
Conference: Independent, National Bible
College Athletic Association
Head Coach: Jeff Rodenburg

No.	Name	Ht.	Wt.	Class	Hometown
10	Gregg Gittins	6-2	175	Sr.	Eugene, Ore.
20	Tracy Sims	6-1	170	Fr.	Kent, Wash.
22	George Rogers	6-3	200	Jr.	Bend, Ore.
24	Steve Case	6-2	170	So.	Eugene, Ore.
30	John O'Haver	6-3	200	Jr.	Eugene, Ore.
32	Matt Sand	6-4	215	So.	Crow, Ore.
34	Jeff Knox	6-3	190	Jr.	Junction City, Ore.
40	Mike Delaplain	6-3	180	Jr.	Eugene, Ore.
42	Craig Doerksen	6-4	170	Fr.	Eugene, Ore.
44	James Bennet	6-3	200	Fr.	Douglas, Ore.
52	Carl Swan	6-4	200	Sr.	Tacoma, Wash.



**WE DO IT
LIKE YOU'D DO IT.™**

NEWBERG
2900 PORTLAND RD.

**20% OFF ANY PURCHASE
WITH THIS COUPON**

Not valid with any other offer.
Good only at Newberg Burger King. Expires 3/15/89

KROHN'S



APPLIANCE CENTER
"SINCE 1947"

FEATURING:

AMANA KELVINATOR SHARP
MAYTAG HOOVER RCA
WHIRLPOOL JENN-AIR
IN-SINK-ERATOR

OPEN 6 DAYS 8:30-5:30

**SALES
SERVICE & PARTS**
SERVICE ON MOST MAKES

538-3613

LOCATED WEST
OF THE POST OFFICE
315 E. FIRST, NEWBERG

TONIGHT'S GAME

Tonight the George Fox College Bruins continue their longest home stand of the year, hosting Northwest Christian College in the fourth of a series of five games in a row here in Miller Gym.

George Fox entered weekend play at 12-8, hosting Western Baptist last night. Northwest Christian, which last played eight days ago, brings a 14-7 record to Newberg.

In meeting the Crusaders, the Bruins step out of NAIA District 2 play. The Crusaders, from Eugene, and the Bruins are meeting for just the third time ever. George Fox won the first contest played, in 1984, then in a first-ever meeting in Eugene on Jan. 14, the Bruins posted an 88-79 win.

In that game George Fox had to come from an eight-point deficit midway through the second half to take the victory, using a 19-2 run in a four-minute span to go ahead for good. It was a record setting game in which GFC hit seven of its nine three-point field goal tries to tie a record for accuracy at .778. And, senior Jeff Richards became just the fifth Bruin in 24 years to record a triple double, on 15 points, 10 rebounds and 12 assists.

This week in NAIA District 2 standings the highest-ranking Bruin is Richards, who has moved up to fifth in assists with his 5.6 average. In tenth is senior guard Brent Peterson at 4.6. In scoring, senior guard Pat Casey is 14th at 16.8 and junior forward Christ Patoine right behind in 15th at 16.7. In rebounding, junior forward Rich Schlachter is 13th at 7.3. He's also 14th in individual three-point field goal average at .355. Richards is 14th in free throw percent at .778.

As a team, GFC is sixth among the 14 district teams in scoring margin, averaging 78.9, 3.6 a game more than opponents. The team field goal average of .486 is seventh.

Sophomore guard Tim Jacobson had the cast removed from his right hand Wednesday, but it will still be two to three weeks before he rejoins the Bruins on the Court. He broke the thumb of his shooting hand in a game Jan. 3 and has not played since, with the Bruins missing his long-range shots.

TONIGHT'S FEATURE: BRUIN PROFILE

CHRIS PATOINE

Junior • 6-5 • 195 • Forward
Sutherlin, Ore.
(Sutherlin High) (Umpqua CC)



Oregon's 1988 community college Player of the Year ... contacted by more than 300 colleges nationwide, at the NCAA level and as far as East Coast ... averaged 16.2 points and 5.2 rebounds a game last season, helping Timbermen to 27-6 record and to championship of Oregon community colleges ... averaged 22 points and 12.2 rebounds as high school senior, named to Oregon AA first team ... a 3.3 GPA student given Umpqua's Scholar-Athlete Award for 1988 ... a starter in the small forward position ... jumps extremely well and a great shooter ... seeking to improve rebounding ... a business major ... favorite food: Calzone ... hobbies: tennis, motorcycles, pinball ... most influential person in life: high school coach Willis New ... person most admired: Dr. J (Julius Erving). Born Jan. 22, 1968, son of Tom and Carol Patoine. Wife, Michelle. Name pronunciation: "Puh-twahn."

MARK'S REMARKS: "Chris is a top quality addition to our program; he is a proven scorer and gifted shooter who will be asked to score for us. We look for him to score big points this year. He has the potential to be an All-District player as a junior."

McDonalds of Newberg and McMinnville/ Key Bank of Newberg Halftime Shoot-out

Tonight—and every home game—the halftime will feature the McDonald's/Key Bank Shoot-out. Fans with specially marked programs will be invited to shoot from a designated location for \$25 gift certificates. All participants will receive a certificate for a free sandwich. Check your program and watch for this halftime feature.

GEORGE FOX COLLEGE 1988-89 BASKETBALL TEAM



Left to right: Jon Hagen, Asst. Coach Eric Swanson, Andy LaVeine (no longer on team), Asst. Coach Steve Grant, Kurt Ronnow, Jeff Richards, Wade Webberley, Tim Jacobson, Dave Wilson (redshirting this season), Jim White, Chris Patoine, Pat Casey, Rich Schlachter, Brent Peterson, Matt Milligan, Coach Mark Vernon, Tim Harris.

THE BRUIN NICKNAME

George Fox College is represented by the nickname and mascot "Bruin." But it's not always been so, even though it should have been.

The nickname comes from a real bear captured in 1887 just two years after Pacific Academy (the College's predecessor) was established. The small cub was captured in the coast range foothills west of Carlton when its mother was shot. The young cub was brought to campus by a student and later lived with a faculty member. When it grew to adulthood it was kept in a pit in what is now known as Hess Creek Canyon south of the campus. It escaped one too many times and was turned into steak for the dining table and the hide preserved on a frame and displayed in an early campus museum. When it deteriorated several years later, it was taken to a campus furnace room to be destroyed, but the framework proved a problem in dismantling, so it was left sitting in a corner. Students found the old Bruin skin later and began skirmishes over ownership, a tradition that continues 101 years later. "Bruin Junior," a replica, under a set of guidelines passed down for years, is fought over periodically in class competition, with the class able to physically drag the Bruin replica off campus declared the rightful owner until next "flashed."

Even with the Bruin tradition, somewhere along the line, the "Quaker" tag to athletic teams came into popularity with sportswriters because of the College's church affiliation, and that nickname was used, along with a mascot "Foxy George," a little fox with a Quaker hat. Both gained acceptance for a period in the 1950s and 1960s until a vote of faculty, students, and administration in 1970 reinstated the Bruin nickname to its rightful place.

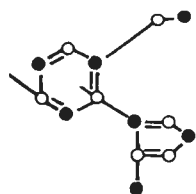
A LOOK AT THE PAST

The game of basketball was invented by Dr. James Naismith in 1891, and it took just seven years for it to be brought to George Fox College (then called Pacific College).

College board member and community leader T. W. Hester and others first saw the game played at the Portland YMCA. They were captivated by the new game and secured a ball, which they brought back to the College. The first exhibition game was played shortly thereafter, in the winter of 1898, and the first site was the third floor of the old Commercial Hotel on North Main Street because the College had no adequate space for the new sport.

The first gymnasium on the campus was the upper part of one wing of an old academy building (Hoover Hall), built in 1885 and torn down in the mid-1950s. A one-room wood gymnasium building was constructed in 1916 and served until 1946, when the College opened Hester Gymnasium, a concrete block structure built partly by student/faculty labor at a cost of \$40,000. The building, with a single hemlock playing floor and seating for 1,100, served through the 1976-77 season with opening of Wheeler Center.

College athletic affiliation in men's basketball over those years has gone from independent status to membership in the old Willamette Christian College Conference, the Metropolitan Conference, the Oregon Collegiate Conference, and back again to the present status as a major small college independent member of NAIA District 2 (joined in 1965). In 1973 George Fox was the district champion and has been in the district playoffs 13 of the last 17 years.



INJECTION MOLDING
ENGINEERING
THERMOPLASTICS

QUALITY PLASTICS CO., INC.

Phone (503) 538-8347 • 2101 Crestview Drive
Newberg, Oregon 97132

THRIFTWAY
NEWBERG
THRIFTWAY
SPRINGBROOK
THRIFTWAY

Subscribe today to follow
top-quality Bruins' sports
coverage all year long.

NEWBERG
GRAPHIC
538-2181



Craftsmanship you can see ...
by people you can trust.

V. Lowell Galambos, Dispensing Optician
432 Villa Road, in the Medical-Dental Center
538-8133
Newberg



729 N. Main St., Newberg
Phone: 538-4422

Enjoy one of Oregon's
natural resources - Ground Water

BUTLER
Chevrolet-Oldsmobile

411 East First
Newberg

538-3161
538-3022

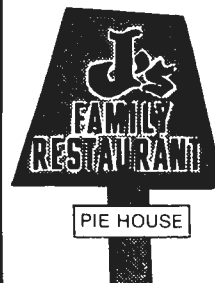
GMAC Financing Available

BUY WISE DRUG
VALU-RITE PHARMACY

NEWBERG

For All Your Drug Store Needs

538-2012



• BREAKFAST
• LUNCH
• DINNER
FRESH BAKED PIES

Come see us
after the game

538-5925

2017 PORTLAND RD.
NEWBERG

JV SCHEDULE

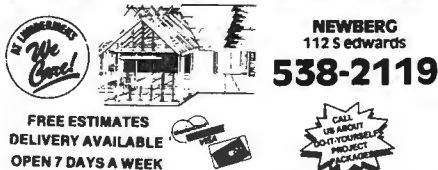
Nov. 16	Lane Community College, 4:00 p.m.	Eugene
22	Western Oregon State, 5:15 p.m.*	Newberg
29	Willamette University, 5:15 p.m.*	Newberg
Dec. 1	Abby's, 7:00 p.m.	Newberg
10	Willamette University, 3:00 p.m.	Salem
12	Western Oregon State, 5:15 p.m.*	Monmouth
Jan. 12	Concordia College, 5:15 p.m.*	Newberg
13	Portland Bible College, 8:00 p.m.	Portland
14	Pacific University, 5:15 p.m.	Forest Grove
20	Linfield College, 5:15 p.m.*	Newberg
21	Pacific University, 5:15 p.m.*	Newberg
24	Portland Bible College, 7:00 p.m.	Newberg
27	Concordia College, 7:30 p.m.	Portland
28	Abby's, 5:15 p.m.*	Newberg
31	Western Baptist College, 7:00 p.m.	Newberg
Feb. 3	Willamette University, 5:15 p.m.*	Newberg
6	Western Baptist College, 7:00 p.m.	Salem
8	Pacific University, 7:30 p.m.	Forest Grove
17	Linfield College, 3:00 p.m.	McMinnville
21	Western Baptist College, 5:15 p.m.*	Salem

*Preliminary games to men's varsity basketball

LADY BRUIN SCHEDULE

Nov. 15	St. Martin's University, 7:30 p.m.	Newberg
Dec. 3	Lewis and Clark College, 7:30 p.m.	Portland
6	Western Baptist College, 5:00 p.m.	Salem
9	Willamette University, 7:30 p.m.	Newberg
10	Pacific University, 7:30 p.m.	Forest Grove
Jan. 4	Linfield College, 7:30 p.m.	Newberg
6	Concordia College, 7:30 p.m.	Newberg
7	Warner Pacific College, 5:15 p.m.	Newberg
10	Pomona-Pitzer College, 7:30 p.m.	Newberg
13	Oregon Institute of Techn., 7:30 p.m.	Newberg
14	Southern Oregon State College, 7:30 p.m.	Newberg
17	Western Baptist College, 7:30 p.m.	Newberg
20	Eastern Oregon State College, 7:30 p.m.	La Grande
21	Northwest Nazarene College, 7:30 p.m.	Nampa, Idaho
27	Western Oregon State College, 5:15 p.m.	Monmouth
Feb. 1	Pacific University, 7:30 p.m.	Newberg
3	Warner Pacific College, 5:15 p.m.	Portland
4	Concordia College, 5:30 p.m.	Portland
7	Linfield College, 7:00 p.m.	McMinnville
10	Oregon Institute of Tech., 5:30 p.m.	Klamath Falls
11	Southern Oregon State College, 5:30 p.m.	Ashland
15	Lewis and Clark College, 7:30 p.m.	Newberg
17	Northwest Nazarene College, 7:30 p.m.	Newberg
18	Eastern Oregon State College, 5:15 p.m.	Newberg
24	Western Oregon State College, 7:30 p.m.	Newberg
25	Willamette University, 7:00 p.m.	Salem
Mar. 1-4	NAIA District 2 Tournament, TBA	TBA
9	NAIA Bi-District Tournament, TBA	TBA
17-21	NAIA National Tournament, TBA	Kansas City

LUMBERMEN'S BUILDING CENTERS



FREE ESTIMATES
DELIVERY AVAILABLE
OPEN 7 DAYS A WEEK

NEWBERG
112 S. Edwards

538-2119



COMPLETE BUILDING MATERIALS



L. Johnson Furniture & Hardware

PHONE 538-4513

205 E. FIRST ST.
NEWBERG, OR 97132



MANUFACTURERS
OF QUALITY
DENTAL
EQUIPMENT

2601 Crestview Dr.
Newberg, OR 97132
(503) 538-9471



- Batteries • Retreads
- Front End Alignment • Shocks • Tires
- Farm Tires and Service • Road Service
- Off the Road Tires & Service

538-2104

2305 Portland Road, Newberg



Springbrook Plaza • Newberg

OPEN 7 DAYS A WEEK

Mon. thru Fri. 9 to 9, Sat. 9 to 7, Sun. 10 to 6

538-3164; Pharmacy 538-7402

10% DISCOUNT
for GFC students
showing student
body card

Pizzas
Salads
Sandwiches

Call Us—
538-2022
2515 Portland Rd.



(503) 472-0808

McDonald's of Newberg
McMinnville

Bring in for a free
regular size drink
with food purchase.

Expires 3/15/89

ARTHUR D. HAY
OWNER/OPERATOR



SPECIALIZING IN WEDDING,
PORTRAITS, & COMMERCIAL

RILEY'S STUDIO, INC.
111 S. College, Newberg

Milt Riley

BUS. PH. 538-4879 RES. PH. 538-2464



The
Flower
Gallery

1556 East 1st
Newberg, Oregon 97132

Kay Hughes
owner

538-5704

GEORGE FOX

VISITOR

[illegible]

NAP'S



112 E. First St.

**OPEN
24
HOURS**

**NEWBERG
REALTY, INC.**

1805 Portland Road
P.O. Box 498
Newberg, Oregon
538-3188

Millard Leslie GRI



**George Fox College
Bookstore**

- Sports Clothing
- Office Supplies
- Cards and Gifts

In Student Center 409 Carlton Way
Ph. 538-8383, ext. 329
Open Mon.-Fri. 8:00-4:30



STATE FARM INSURANCE COMPANIES
HOME OFFICES: BLOOMINGTON, ILLINOIS

RICK GREENE
Agent

1556 East First Avenue
Newberg, Oregon 97132

Bus.: (503) 538-1414
Res.: (503) 538-6597

Sunshine Cleaners

**Complete Wardrobe Service
Professional & Economical
Specialty Services
Leathers-Hats
Draperies-Rugs
Alterations & Repairs
Carpet Machine Rentals
2105 Portland Road
538-2621**

COUPON

\$2.00 off any Giant Pizza

(Not good with any other offer)
Expires March 1989



**"SEE YOU
AFTER THE GAME!"**

PIZZA, SALAD BAR, SANDWICHES
ORDERS TO GO

1913 Portland Road 538-3800

The Northwest's Largest Independent Tire Dealer



Les Schwab Tire Centers

**"Taking care of your tire needs
in Newberg"**

538-1329

110 N. Sitka St.
Newberg, OR 97132



115 NORTH MAIN
NEWBERG, OR 97132

538-5888

Movie Rental —
Rent 2, get 1 free

1988-89 BRUIN SCHEDULE



NOV	6	7	8	9	10 Hawaii Pacific	11	12
	13	14	15	16	17	18-19 NAIA Dist. 2 Tip-Off at Western Baptist	
	20	21	22 Western Ore. State	23	24	25	26
DEC	27	28	29 Seattle Pacific	30	1	2-3 Willcuts-Twenge Memorial Classic	
	4	5	6	7	8	9-10 John Lewis Classic at Willamette	
	11	12 Western Ore. State	13	14	15	16	17
JAN	18	19	20	21	22	23	24
	25	26	27	28	29-30 Eastern Ore. State Tournament		31
	1	2 Azusa Pacific	3 Bethany Bible	4	5 Warner Pacific	6	7 Columbia Christian
FEB	8	9	10	11	12 Concordia	13	14 Northwest Christian
	15	16	17	18	19	20 Northwest Nazarene	21 College of Idaho
	22	23	24	25	26	27 Western Baptist	28 Northwest Christian
MAR	29	30	31	1	2	3 Northwest College	4 Concordia
	5	6	7	8	9	10 College of Idaho	11 Northwest Nazarene
	12	13	14	15	16 Columbia Christian	17	18 Warner Pacific (H)
	19	20	21 Western Baptist	22	23	24	25 NAIA Dist. 2 Playoffs
	26	27	28 NAIA Dist. 2 Playoffs	1	2	3	4 NAIA Dist. 2 Playoffs
	5	6	7	8 NAIA Dist. 2 Playoffs	9	10	11

(H) = Homecoming

THE BRUIN CLUB: BE A PART OF THIS GFC TEAM!

Teamwork! That's what it takes for a winning sports program. And that's the reason for the formation of the George Fox College Bruin Club.

The goals of this GFC "team" are several and the benefits are many—to student athletes, to the College, and you! This team supports athletic excellence by an investment in the lives of talented young people who represent GFC with sports excellence.

In teamwork the individuals unite. Members include former GFC athletes, alumni, parents, relatives, friends, and community residents. Here's your opportunity to join them and become a GFC Bruin.

The Bruin Club has these purposes:

- To improve GFC athletics by providing grants and scholarships to student athletes in all sports.
- To provide funds for recruiting and special projects above that which regular College budgeting allows.

• To assist in providing names of potential GFC student athletes.

• To participate in and help with GFC athletic projects and promotions, including moral and spiritual support of coaches and student participants, and attendance at athletic events.

The primary benefit of membership in the GFC Bruin Club is the satisfaction of assisting a collegiate athletic program. Membership is in four categories, with appropriate recognition for each level:

- Blue/Gold—\$100 annually
- Varsity—\$250 annually
- Lettermen—\$500 annually
- Coach's Circle—\$1,000 annually

If you are interested in being a member of the George Fox College Bruin Club, contact any GFC coach or the George Fox College Development Office.

Bring in coupon, get 50¢ off 18 holes



Springbrook Plaza • 538-5238
Wed., Thur. 4:00-9:00; Fri. 4:00-10:30
Sat. 1:00-10:30; Sun. 2:00-9:00

2316 Portland Rd., Suite G
Newberg, OR 97132

538-0510

D & D VIDEO, INC.



Movies and More...

DAVID HANCOCK
DEBBIE HANCOCK

FOR ALL YOUR TRAVEL NEEDS CALL MARK



224-5000
1-800-245-5557
We can do groups
We deliver
VISTA TRAVEL SERVICE
200 S.W. Market Street, Portland, OR 97201

WE ENCOURAGE YOU TO SUPPORT THE BRUIN SPONSORS. THEIR ADVERTISING MAKES POSSIBLE THE GEORGE FOX COLLEGE SPORTS PUBLICITY PROGRAM.