

10-2007

# Mind and Brain: What it Means to be a Person

Glena Andrews

*George Fox University*, [gandrews@georgefox.edu](mailto:gandrews@georgefox.edu)

Follow this and additional works at: [http://digitalcommons.georgefox.edu/gscp\\_fac](http://digitalcommons.georgefox.edu/gscp_fac)

 Part of the [Psychology Commons](#)

---

## Recommended Citation

Presented at Northwest Nazarene University, October 25, 2007

This Conference Proceeding is brought to you for free and open access by the Graduate School of Clinical Psychology at Digital Commons @ George Fox University. It has been accepted for inclusion in Faculty Publications - Grad School of Clinical Psychology by an authorized administrator of Digital Commons @ George Fox University. For more information, please contact [arolf@georgefox.edu](mailto:arolf@georgefox.edu).

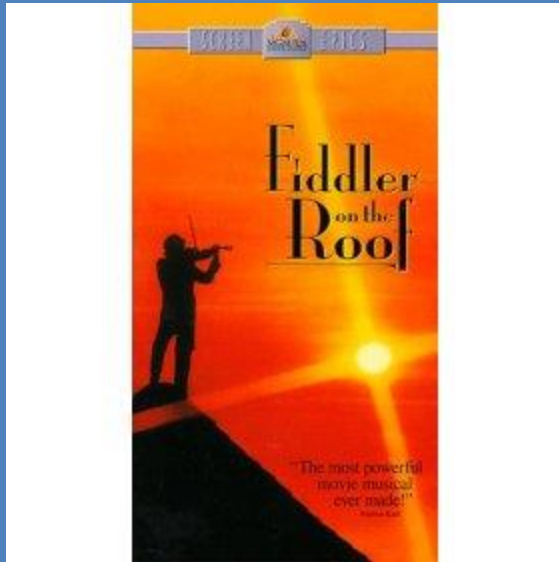


# Mind and Brain: What It Means to be A Person

Glena L. Andrews, Ph.D., MSCP

Northwest Nazarene University

October 25, 2007



Brain?

Soul?



Mind?





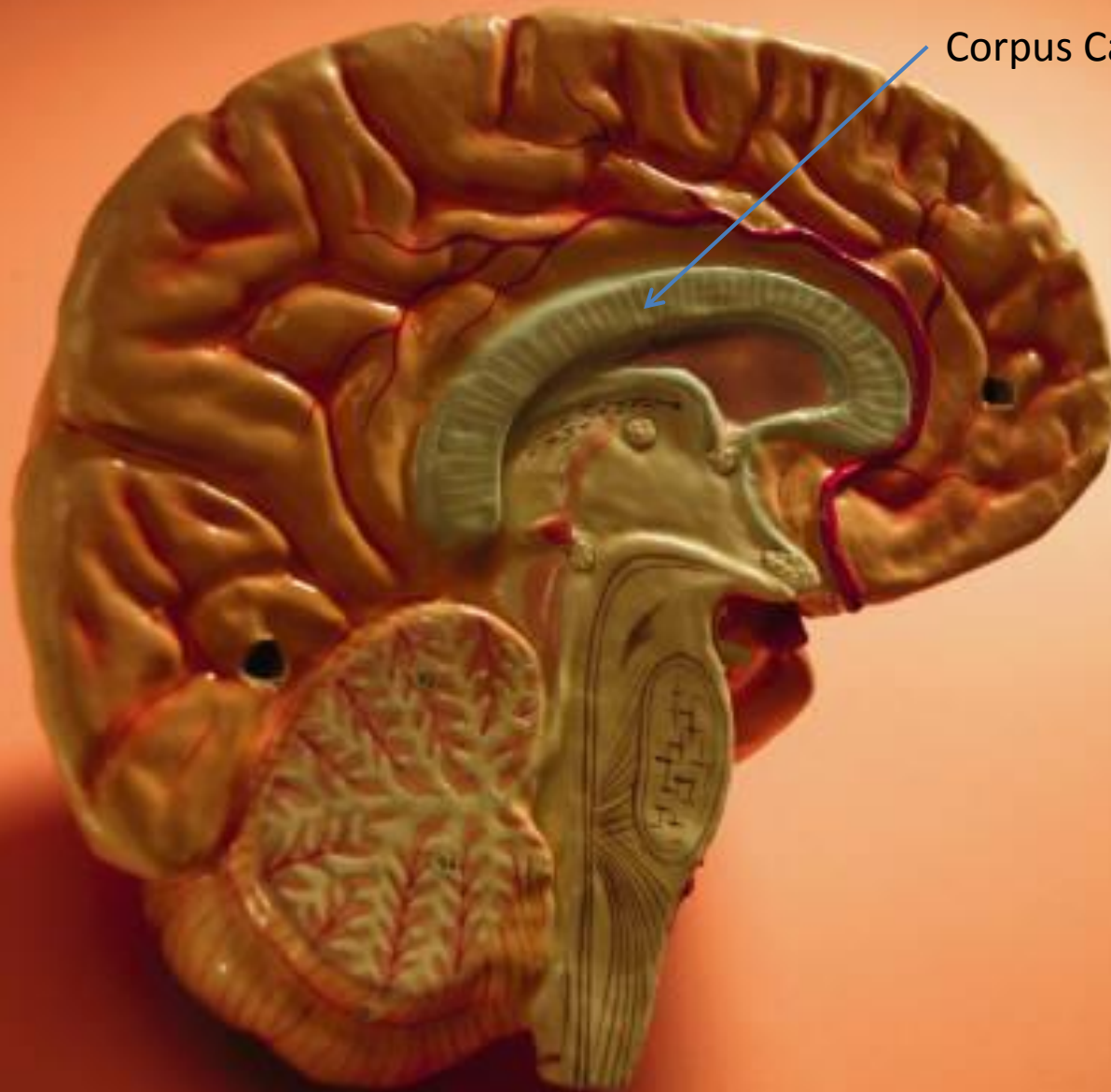


# Stuart Little Syndrome









Corpus Callosum

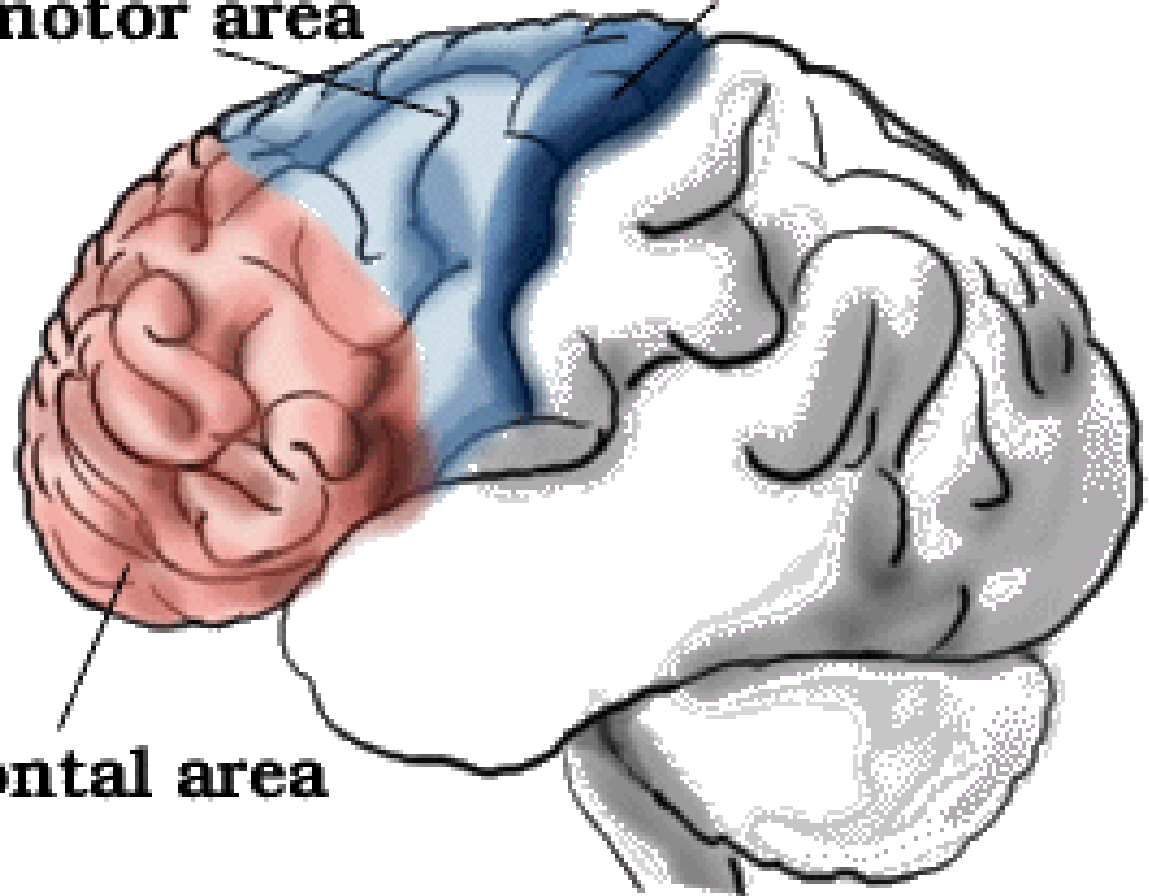


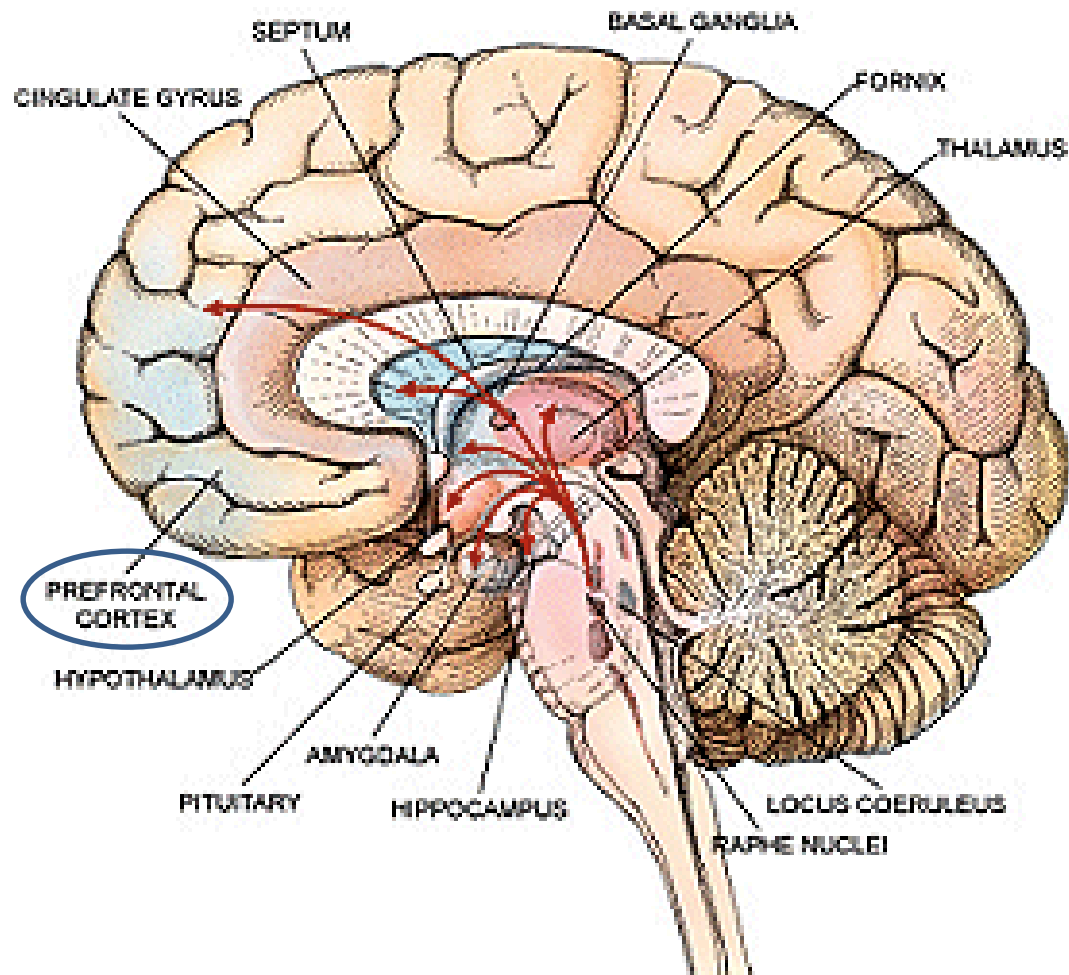
# Frontal Lobe:

Premotor area

Motor area

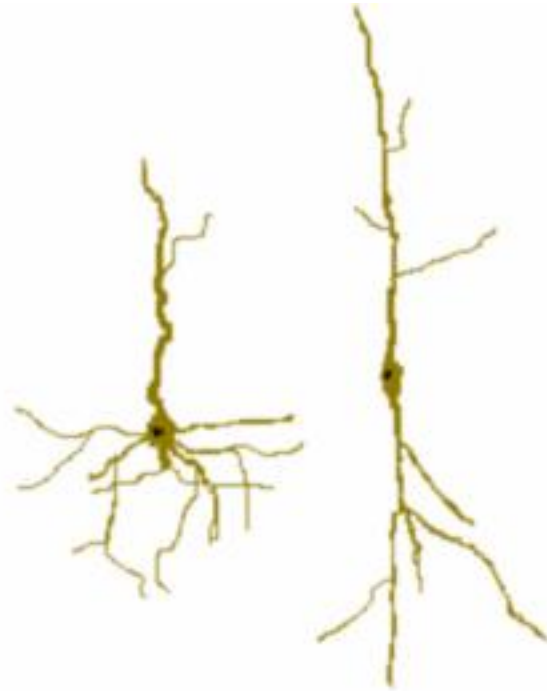
Prefrontal area





Parts of normal human brain  
Source: Washington University

# Von Economo Neuron



# Theory of Mind



# Non-person?





# Socially Interactive





Thank you.

[glandrews@nnu.edu](mailto:glandrews@nnu.edu)