

Levi Pennington

People

1910

Proposed Women's Dormitory

Levi T. Pennington
George Fox University

Follow this and additional works at: https://digitalcommons.georgefox.edu/levi_pennington

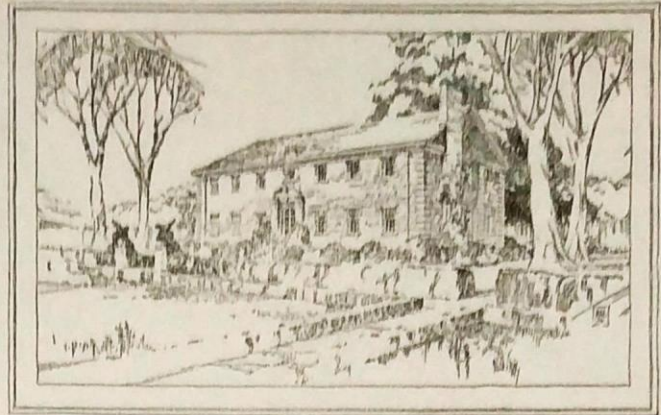
Recommended Citation

Pennington, Levi T., "Proposed Women's Dormitory" (1910). *Levi Pennington*. 404.
https://digitalcommons.georgefox.edu/levi_pennington/404

This Book is brought to you for free and open access by the People at Digital Commons @ George Fox University. It has been accepted for inclusion in Levi Pennington by an authorized administrator of Digital Commons @ George Fox University. For more information, please contact arolfe@georgefox.edu.

Women's Auxiliary
to
Pacific College
Newberg, Oregon

REBECCA PENNINGTON
President
EMMA KENDALL
Vice President
LOUISE HOSKINS
Secretary
ELIZABETH SUTTON
Treasurer



PROPOSED WOMEN'S DORMITORY

Dear Friend:

You will remember that some months ago we wrote you in the interests of the proposed new dormitory for women students. We knew we were undertaking a big task in seeking to raise a fund of \$30,000.00 for this first unit of our permanent living quarters for girls, and that it would take us some years to complete the task. But we know also that it must be done, and so we are again asking our friends to contribute as liberally as they can to this building which we are sure will mean more to the college than any building enterprise since the erection of Wood-Mar Hall.

To refresh your mind, this is to be the initial permanent unit for the housing of our women students, and must contain much more than merely sleeping rooms. The proposed building is to provide kitchen and dining rooms, rooms for storage, social rooms, matrons' rooms, etc., besides the living quarters for thirty girls. Our next unit would house twice as many students at the same cost.

We are grateful for the thousands of dollars which have already been contributed for the erection of this dormitory. This money is safely and profitably invested, and is growing. But we need to push the fund toward completion as rapidly as possible.

The building is to cost complete \$30,000.00, and to contain 30,000 bricks. How many bricks will you pay for? How much of the wall will you build?

With the earnest hope that you will make your contribution as liberal as possible, we are

Sincerely your friends,

^{to}
WOMAN'S AUXILIARY AND PACIFIC COLLEGE

By

Rebecca Pennington

President

Louise M. Hoskins

Secretary