



---

Volume 52 | Issue 3

Article 1

---

2009

## Frontmatter (The Christian Librarian 52 : 3)

*The Christian Librarian* is the official publication of the Association of Christian Librarians (ACL). To learn more about ACL and its products and services please visit [//www.acl.org/](http://www.acl.org/)

Follow this and additional works at: <https://digitalcommons.georgefox.edu/tcl>

---

### Recommended Citation

(2009) "Frontmatter (The Christian Librarian 52 : 3)," *The Christian Librarian*: Vol. 52: Iss. 3, Article 1.  
DOI: <https://doi.org/10.55221/2572-7478.2102>

This Editorial is brought to you for free and open access by Digital Commons @ George Fox University. It has been accepted for inclusion in *The Christian Librarian* by an authorized editor of Digital Commons @ George Fox University. For more information, please contact [arolfe@georgefox.edu](mailto:arolfe@georgefox.edu).

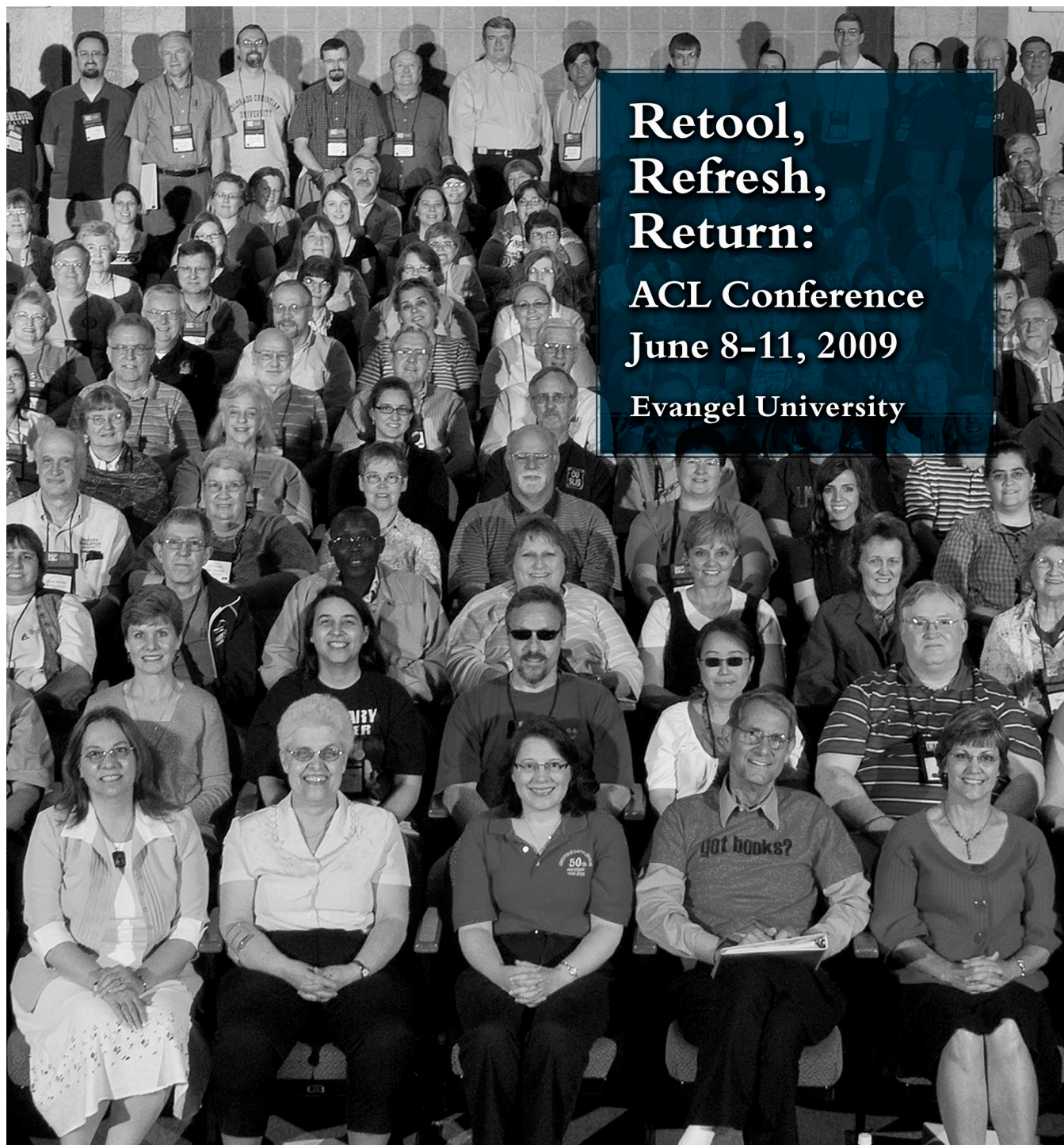


# THE CHRISTIAN LIBRARIAN<sup>®</sup>

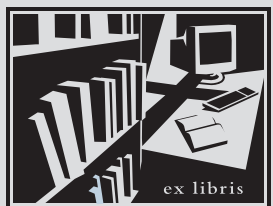
Journal of the ASSOCIATION of CHRISTIAN LIBRARIANS

ISSN 0412-3131

Volume 52 (3) 2009



**Retool,  
Refresh,  
Return:**  
**ACL Conference**  
**June 8-11, 2009**  
**Evangel University**



# THE CHRISTIAN LIBRARIAN®

## IN THIS ISSUE

VOLUME 52 (3) 2009

- 76 **Retooling the Profession:**  
Librarianship in an Era of Accountability and Competition  
Gregory A. Smith
- 85 **The Importance of Wisdom in Information Literacy**  
Eric Nyrose
- 93 **Next-Generation Librarianship:**  
The Revolution Begins  
Kimberley Wilcox, Shelley Harrell

- 112 **Facebook for Libraries**  
Lori Thornton
- 115 **Research Studies, Reports, and Surveys on the Web**  
Quality Resources for Internet-Focused Students  
John Jaeger
- 121 **Resource Reviews**  
Phyllis Fox
- 135 **Resources Available for Review**  
Phyllis Fox

Unless otherwise noted, all photos appearing in this issue are courtesy of Woodvall Moore.

*The Christian Librarian*, the Journal of the Association of Christian Librarians, is owned by the Association of Christian Librarians, Inc. It is published three times annually. **Subscription Rates:** \$30 per year in the U.S., Canada, and Mexico; \$35 per year overseas. **Address all subscription correspondence to:** TCL Subscription, Association of Christian Librarians, Inc., P. O. Box 4, Cedarville, Ohio 45314-0004 or [info@acl.org](mailto:info@acl.org).

**Membership dues in the Association of Christian Librarians** includes subscription to the Journal. Requests for membership and general information regarding the Association of Christian Librarians should be addressed to the Association of Christian Librarians, Inc., P.O. Box 4, Cedarville, Ohio 45314-0004 or [info@acl.org](mailto:info@acl.org). To learn more about the Association, visit ACL's website at [www.acl.org](http://www.acl.org).

**Address all manuscripts and all editorial correspondence to the Editor-In-Chief.** Prospective authors should review "Guidelines for Authors" at [acl.org/tcl.cfm](http://acl.org/tcl.cfm). Statements in the articles published are the responsibility of the author. Publication does not imply endorsement.

**Address reviews and review copies of books to the Review Editor.**

*The Christian Librarian* is indexed in the *Christian Periodical Index*, *Information Science Abstracts*, and *Library Literature*. *The Christian Librarian* is a member of the Evangelical Press Association.

This publication is available in microform from UMI, 300 North Zeeb Road, Ann Arbor, MI 48106.

## EDITORIAL STAFF

**EDITOR-IN-CHIEF**  
Anne-Elizabeth Powell  
Ryan Library  
Point Loma Nazarene University  
3900 Lomaland Drive  
San Diego, CA 92106  
tel: 619-849-2208  
fax: 619-849-7024  
[Anne-ElizabethPowell@pointloma.edu](mailto:Anne-ElizabethPowell@pointloma.edu)

**PEER REVIEW EDITOR**  
Ron Jordahl, Director  
Jamison Library  
Southern Evangelical Seminary  
3000 Tilley Morris Road  
Matthews, NC 28105  
704-847-5600 x208  
fax: 704-845-1747  
[rjordahl@ses.edu](mailto:rjordahl@ses.edu)

**NEWS AND VIEWS EDITOR**  
Alice Ruleman  
Access Services Librarian  
University of Central Missouri  
16 SE 135 Road  
Warrenburg, MO 64093  
tel: 660-543-8895  
[ruleman@libserv.ucmo.edu](mailto:ruleman@libserv.ucmo.edu)

**REVIEW EDITOR/  
COPY EDITOR**  
Phyllis E. Fox  
Instructional Services  
Librarian for Graduate Studies  
Ryan Library  
Point Loma Nazarene University  
3900 Lomaland Drive  
San Diego, CA 92106  
tel: 619-849-2387  
fax: 619-849-7005  
[Pfox@pointloma.edu](mailto:Pfox@pointloma.edu)

**LIAISON TO CONFERENCE**  
Sandra G. Yaege  
Regent University  
1000 Regent University Drive  
Virginia Beach, VA 23464  
tel: 757-226-4165  
fax: 757-226-7051  
[sandyae@regent.edu](mailto:sandyae@regent.edu)

## PUBLICATION DESIGN

Welborn Creative  
tel: 937-418-1533  
[brent@welborncreative.com](mailto:brent@welborncreative.com)