

1965

Student Handbook, 1965-1966

George Fox University Archives

Follow this and additional works at: https://digitalcommons.georgefox.edu/student_handbooks

Recommended Citation

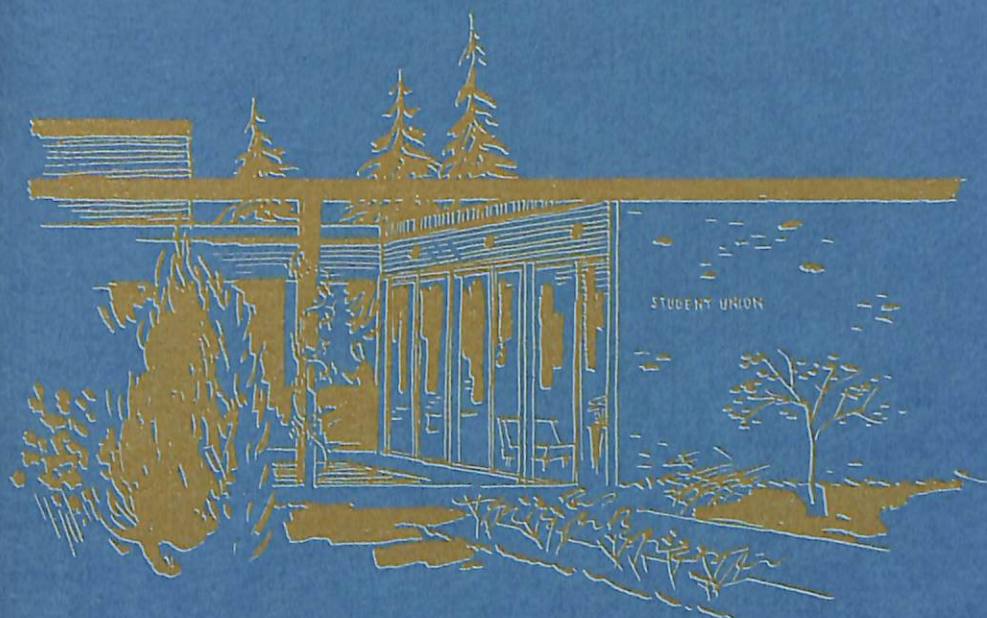
George Fox University Archives, "Student Handbook, 1965-1966" (1965). *Student Handbooks*. 16.
https://digitalcommons.georgefox.edu/student_handbooks/16

This Book is brought to you for free and open access by the Archives and Museum at Digital Commons @ George Fox University. It has been accepted for inclusion in Student Handbooks by an authorized administrator of Digital Commons @ George Fox University. For more information, please contact arolfe@georgefox.edu.

George Fox College

**student
handbook**

1965-66



**George Fox
College**

**student
handbook**

1965-66

Preface

This booklet is sent to you to provide a picture of the Quaker campus. Obviously, a college education is comprised of much more than you learn in all of your books. We have outlined many traditions, standards, and privileges of George Fox College for you in such a way that from your first step onto the campus you will be able to feel at home.

We ask you to plan your activities and attitudes in the light of these standards and traditions. As you come to college, aim your ambitions toward the very highest social, spiritual, and academic goals possible.

Best wishes to you as you plan one of life's greatest experiences—going to college!

Message from the President

Dear Students,

It is one of my happy privileges to greet you as you come onto the campus of George Fox. As I have gone back over a number of my previous attempts at stating a word of welcome, I note that in most instances I have addressed myself to the incoming Freshmen almost to the exclusion of other students.

I wish to welcome all new students. You are launching upon the best four years of your lives to date. You are coming upon the great world of ideas in a far more significant manner than you have done in high school, and you are approaching an era of physical and social development which will be exciting and eternally important. Be assured that the programs and personnel here at GF are ideally designed to make your venture most rewarding.

But also to all of you returning people, I extend my hand in welcome for the second or third or fourth or (perish the thought) time. Your next period here will be one of greater accomplishment, leadership, and realization. I am depending upon you. And may God grant us a most worthwhile year of total living.

*Your friend,
Milo C. Ross, President*

Student Body President's Welcome

Greetings from the A.S.G.F.C.,

All of us engaged in higher education are seeking to find our place in life, and since we find ourselves in a Christian institution we have the added responsibility of finding that place with a particular point of view that we feel will enhance our life choices. College is more than books, lectures, research, ball games, and parties, but one of the greatest assets you will receive will be the new insight on life in general.

I hope that we will all find our role to play in life, but even more I pray that we will all find the "life more abundant" through Christ who has given His all for us. The least we can do is give Him our lives.

With this in mind I am sure that we all can look forward to a good year.

*Sincerely,
Fred Gregory
ASGFC President*

Academic Calendar, 1965 - 66

Fall Term

Pre-school Faculty Conference	Thurs - Sat	Sept 16-18
Dormitories open to Freshmen	Tues PM	Sept 21
Orientation and registration	Wed - Sun	Sept 22-26
Fall Convocation	Sun	Sept 26
Classes begin	Mon	Sept 27
Last day to change program without penalty	Mon	Oct 4
Last day to enroll in new course	Fri	Oct 8
Fall Christian Emphasis	Sun - Sun	Oct 10-17
Homecoming	Sat	Oct 30
Last day to drop a course	Fri	Nov 19
Thanksgiving vacation	Thurs - Sun	Nov 25-28
Registration for second term	Mon - Fri	Nov 29-Dec 3
Final exams	Mon - Thurs	Dec 13-16

Winter Term

Classes begin	Mon	Jan 3
Last day to change program without penalty	Mon	Jan 10
Last day to enroll in new course	Fri	Jan 14
Future Freshman Day	Sat	Jan 29
Last day to drop a course	Fri	Feb 25
Registration for Spring Term	Mon - Fri	Feb 28-Mar 4
Final Exams	Mon - Thurs	Mar 14-17

Spring Term

Classes begin	Mon	Mar 28
Last day to change program without penalty	Mon	Apr 4
Last day to enroll in new course	Fri	Apr 8
Spring Christian Emphasis	Sun - Sun	Apr 3-10
Sophomore-Senior Testing	Thurs - Fri	Apr 21-22
Last day to drop a course	Fri	Apr 22
May Day	Sat	May 7
Registration for Fall '66	Mon - Fri	May 16-20
Commencement Weekend	Fri - Sun	Jun 3-5
Baccalaureate and Commencement	Sun	Jun 5
Final Exams	Mon - Thurs	Jun 6-9

Table of Contents

<i>Preface</i>	i
<i>Message from the President</i>	iii
<i>Student Body President's Welcome</i>	iii
<i>Academic Calendar</i>	iv
<i>Table of Contents</i>	v, vi
THE GEORGE FOX "EXPERIENCE"	7
Information for Arrival	7
Get the Facts	7
TIPS ON ACADEMIC MATTERS	8
Entrance Tests	8
How to Register	8
How to Change Registration	8
How to Withdraw	8
How to Petition for Extra Hours	8
General Academic Regulations	8
Finance and Finals	8
Class Attendance	9
Excused Absence Procedure - Illness	9
Exam Fee	9
Lost and Found	10
Mail Call	10
Telephones	10
Co-curriculum and Eligibility	10
Library Procedure	10
CHAPEL	11
CAMPUS CONTROLS — A SHARED RESPONSIBILITY	11
Basic Principles	12
Campus Relations Committee	12
Residence Hall Councils	13
Inter-Hall Council	13
Disciplinary Actions	13
RESIDENCE HALL COMMUNITIES	13
Quiet Time	13
Space Limits	13

In and Out	14
Study and Quiet Hours	14
Visit and Visitors	14
Vacations	14
Lounges and Laundry Regulations	14
OFF-CAMPUS LIVING ARRANGEMENTS	15
DINING SERVICES	15
Lunches	15
Dining Hall Dress	15
Guest Tickets	15
HEALTH AND MEDICAL SERVICES	16
Physical Examination	16
Health Habits	16
College Dispensary	16
Dental Services	16
Medical Plan	16
CLOTHING CLUES	16
Clothing Charts	17
DATING DO'S	18
MOTOR VEHICLES	18
STUDENT EMPLOYMENT	19
WHOM TO SEE FOR WHAT YOU WANT	20
YOUR GUIDE TO STUDENT GOVERNMENT	21
1965-66 Student Body Officers	21
ASGFC Financial System	22
ASGFC Budget, 1965-66	23
Duties of Officers	24
CENTER INSERT:	
Your George Fox College Activities Calendar For 1965-66	
Organizations	30
Student Union Board	33
ASGFC Constitution	35
ASGFC By-Laws	38
ASGFC Standing Rules	46
ALMA MATER	50-51

The George Fox "Experience"

George Fox College is a Christian college which has maintained through the years highest standards of Christian principles of living. You are encouraged to be consistent in maintaining these principles. Start your year right by establishing a time for daily Bible reading and prayer, for you will need the help and inspiration of this time, if you are to measure up to the standards of Christ while at college.

You will enjoy the warm spiritual atmosphere in the Newberg churches. All students are warmly welcomed at the Newberg Friends Church. Those who prefer to worship in the church of their own denomination will find a hearty welcome and concern for their spiritual welfare.

At the college church you will find excellent college age Sunday School classes and evening Friends Youth services.

The pastor of the Newberg Friends Church is our college pastor. He is most willing to counsel with you concerning your spiritual needs and to be your pastor away from home. You will find a friendly and spiritual atmosphere in the Sunday church services. The informal evening church hour is given to testimonies, live gospel singing, and evangelistic preaching. You will find opportunity for real Christian service in the work of the Sunday School, Friends Youth, Boys and Girls Clubs, or by joining our college church choir. Avail yourself of the privilege of being a faithful worshipper in both morning and evening services. There are also possibilities for service through deputation work in various churches, representing the college as you serve in these places.

One of the mid-week highlights on our campus is the Student Prayer Meeting which is held each Wednesday evening. Don't miss it!

In line with our emphasis on highest planes of Christian living, attendance at programs inconsistent with Christian principles is seriously discouraged. The college endeavors to furnish activities which provide for the social development of the students.

Opportunity is provided for participation in the finest cultural programs in the Portland area. Attendance at theater programs which are not consistent with Christian principles is both disapproved and seriously discouraged. Social dancing, the use of "playing cards," alcoholic beverages, or tobacco are not permitted by students attending George Fox College.

INFORMATION FOR ARRIVAL

The college administration is responsible for living arrangements for all students who will not be living in their homes. Men and women shall report immediately upon arrival to the Student Union where the student welcoming committee will direct them to their respective residence hall assignments. It is expected that all students will plan to live in campus residence halls insofar as space permits. Any arrangements to live off campus must be approved by the Dean of Students.

GET THE FACTS

If at any time you have questions to be answered do not accept rumor in place of facts. If in doubt, go to one of the administrative officials or a Student Council member and ask! The president, deans, faculty, staff, and student leaders will welcome the opportunity to help you. They know the answers, or can direct you to the one who does know. You are not bothering them when you call at one of their offices; their business is serving you. Page 20, entitled "Whom to See for What You Want", will help you to know what people you might contact about questions you may have.

Tips on Academic Matters

ENTRANCE TESTS

A series of entrance tests is given to freshmen and incoming transfer students. These tests are used to aid the counselors in knowing more about you so that they can serve you better. The results are useful in helping you decide on a major field of study; whether or not you should plan on graduate school; and, they help the college adjust the curriculum to meet the changing needs of students. The Dean of Faculty, Dean of Students, or the Chairman of the Division of Education and Psychology will be glad to go over your results with you after they are given to you.

HOW TO REGISTER

All students above the Freshman level will register in the library on Friday, September 24. Freshmen will register in the library on Saturday, September 25. Every student is assigned to a faculty advisor who will assist them in selecting their class schedule. A more detailed instruction sheet will be given you at the time of registration.

HOW TO CHANGE REGISTRATION

Late admission to classes because of registration changes made after the close of the first week of classes must be by petition to the Academic Committee, consent of the professor involved, and payment of a \$3 fee.

HOW TO WITHDRAW

A student who wishes to *withdraw from a course* must secure a change-of-course form from the registrar which is to be approved by the instructor involved, the registrar, and the bursar. If a course is dropped without permission, or if after the third week, a course in which he is not doing passing work is dropped, the student shall receive a "Failure" grade. A student may not withdraw from a course after the close of the sixth week of the term.

A student should realize that "quitting" does not constitute a *withdrawal from college*. He is required to inform the registrar of his intention to withdraw, and to fill out the withdrawal forms furnished by the registrar's office. Unless this is done the student may forfeit his right to clear transcript of credits and honorable dismissal.

HOW TO PETITION FOR EXTRA HOURS

The proper balance of class work, co-curricular involvements and part-time work is extremely important. Your advisor will want to talk with you about any plans you have to take more than the 17½ units allowed normally. If G.P.A. is over 3.00, 18½ units may be allowed. Please note page 17 in the catalog for the policies covering this.

GENERAL ACADEMIC REGULATIONS

Please read carefully pages 15 to 19 in the college catalog for other academic policies not mentioned here.

FINANCE AND FINALS

No student shall be allowed to receive the results of any of his final examinations or his grades until he has completed satisfactory financial arrange-

ments for the payment of fines and fees assessed following registration. All registration costs are due and payable under policies on page 12 of the catalog or as revised by the administration and board of trustees.

CLASS ATTENDANCE

The responsibility rests with the student to maintain good standards involving satisfactory scholarship. Regular class attendance is expected of each student in all courses. Professors set individual standards for achievement in their respective courses, and notify students of these requirements. Students should be present and prepared for daily participation in class discussions and quizzes, and well prepared for all exams. All projects should be completed according to established deadlines.

Permission to be absent from class for participation in co-curricular activities must be granted by the Dean of Faculty. In order to secure this permission get from the Dean of Faculty an **ADVANCED ASSIGNMENT SLIP**. He will record the dates you are to be absent from the class with the reason for the absence. You then record the classes you will be missing and get the assignment from each of these classes from the respective professors. When the work is complete, the professor will sign your Advanced Assignment Slip. After securing the signature of each professor involved, turn your slip to the Dean of Students office to cover chapel absences. Such permission must be requested one week in advance of the anticipated activity, and turned to the Dean of Students office completed one full day prior to departure for the co-curricular event.

Work lost because of any other absences may be made up only in the case of prolonged or confining illness, death of close relatives, or other similar emergency. See the Dean of Students for excuses for these kinds of absences.

EXCUSED ABSENCE PROCEDURE - ILLNESS

On-campus students:

In those rare cases when you believe you are too ill to attend classes, please follow this procedure. If at all possible, get up and go to breakfast, then see the nurse. See nurse's hours under Health Services section of this handbook. She will then help you make the decision regarding the health procedure best for you. If the nurse is unavailable, see the Dean of Women or the Dean of Students. For absence because of illness, the school nurse, the Dean of Women, and the Dean of Students are the only ones who can excuse you from class with the privilege of making up any work missed. So, be sure and get the excuse slip signed by one of them before you return to class. After presenting the slip to each of your professors, leave the slip at the Dean of Students office to be excused from chapel absence.

Off-campus students:

If you are too ill to attend classes and need to make up the work missed, have your mother (or your wife or husband, or roommate, whichever one applies in your case) call the Dean of Students office and inform them before the absence is incurred. Then stop at the office later for the excuse slip and follow the same procedure listed above for on-campus students.

EXAM FEE

For taking duly announced examination at other than the announced time for reasons approved by the Dean of Faculty (illness not included) a fee of \$5 is charged for each such examination.

LOST AND FOUND

One of our finest traditions is the honor of respecting the possessions of others. If you lose an article or if you find a stray article, report to the Dean of Students. Notice of lost and found items will appear in the Student Bulletin. All lost articles which are found may be retrieved from the Dean of Students office.

MAIL CALL

Those students living in Pennington and Edwards Halls may pick up their mail at the office in the lounge of each hall. All other students mail will be handled in the mail room in the basement of Wood-Mar Hall. For a fee of \$.50 a year a student may rent a self-service box which is usually shared by two or three people. Arrangements to rent a box are made at the mail room.

TELEPHONES

The college telephone system operated through the switchboard in Pennington Hall may be used by students for local calls provided they use those instruments provided for general use. This does not include the use of phones in faculty and administrative offices without the express permission of the one in charge of the office. All long distance calls placed by students must be placed from the pay phones provided in several locations on the campus.

CO-CURRICULUM AND ELIGIBILITY

Those activities which are carried on in addition to academic studies are still considered a vital part of the GFC "experience". Because it is very important that a student not jeopardize his academic achievement by becoming too heavily involved in other activities, an eligibility standard is adhered to as follows:

1. Co-curricular activities as defined include all organized activities not directly connected with the requirements of a specific course of study. This includes inter-collegiate athletics, student government and club offices, acting in plays, inter-collegiate debate (for those not enrolled in a debate course), deputation work (except for that involving a single Sunday activity, e.g., teaching a Sunday School class), intra-murals, and other organized activities that may be formed.
2. A student must be enrolled in a minimum of 12 term hours to be eligible for participation in co-curricular activities.
3. Students who enter college provisionally may participate in co-curricular activities only after having reached regular standing. (Note policy on page 15 of catalog.)
4. Regular students who drop below the performance level in any particular term (1.75 for lower classmen, 2.00 for upper classmen), will have their programs reviewed by the Academic Affairs Committee which is empowered to require curtailment of curricular, co-curricular or work activities, which, in consultation with the students, appears suitable in each case.

LIBRARY PROCEDURES

1. The Librarians are here to assist you. Please do not hesitate to consult with them at any time. An awareness of the library hours will enable you to schedule your time more effectively. Please note these hours as posted in the library.

2. "Cross my palm with silver" if you happen to bring a Reserve Book in late, plan on bringing *five cents* for each hour overdue. If you are returning a two-weeks book, please bring *two cents* for each day overdue.
3. Reference Books (call number is preceded with "R") and early Quaker books, and a few other books published before 1850 *do not circulate*.
4. Typing is permitted in the typing room on the second floor.
5. Current periodicals do not circulate, unbound may be taken for three days; bound volumes must remain in the library. Fines are the same as the books.
6. Pamphlets may circulate for two weeks.
7. *Records may not be taken home*. They are played in the library or in the classroom (assignments vary). Any resulting damage will be charged to the student whose name appears on the book card.
8. All traffic flows past the main desk. Side and rear exits are for emergency use only.
9. Art prints may be checked out for *four weeks*. Filmstrips do not circulate.
10. You may sit any place to study in the library that is comfortable for you. When it is necessary for you to leave, please take your books along, or leave them in the shelves above the coat rack. *One only* at each carrel, (single study desk), please.
11. Telephone calls are not received for students, except in emergencies, a message can be left at the main desk.
12. A shelf is available at the entrance for personal books and belongings.
13. A music listening room is provided for records and radio, but class assignments take precedence.

SAVE YOURSELF MONEY! RETURN YOUR BOOKS ON TIME!
NOTICE THE DATE DUE!

Chapel

Chapel services are held each Tuesday, Wednesday, Thursday, and Friday. Attendance at chapel is a must at George Fox, and you will find the chapels to be worth the time spent in enjoying the performance of other students, excellent speakers, musical programs, occasional comedy programs, worthwhile films, faculty programs, and participation in open chapels.

Chapel attendance operates somewhat differently from class attendance. A record of each chapel absence is kept by the Dean of Students. If a student should miss four chapels in one term without excuse he will be placed on *citizenship* probation for the remainder of the term. Continued unexcused absence from chapel will result in the student being placed on *disciplinary* probation. The student will then be, and his parents may be, notified in writing that further chapel cuts will result in the student being asked to withdraw from college for one term. Citizenship and disciplinary probations are used differently in other areas of student conduct control.

Be on time for the beginning of each chapel so that others will not be disturbed because of your tardiness. Three tardies constitute an absence. Your chapel committee proposes to make chapel so very interesting to you that you will want to be present at each chapel.

Campus Controls— A Shared Responsibility

Certain living standards are expected of you at college. These are given to you that you may know what others expect of you. Here you must assume

responsibility for your successful adjustment to new living conditions. Because college situations differ from those at home in many instances, regulations are established and must be observed if you and those around you are to gain the most from their college life. Some basic principles guide all decisions made in relation to our manner of living on a Christian college campus. Every decision shall be based upon those principles which enhance our testimonies as consistent Christians. Parts of our system of Campus Controls are being developed and refined as needed, and officially announced whenever such changes are made.

BASIC PRINCIPLES

Students shall govern their activities in matters of residence hall living, adherence to established college regulations, obedience to those in authority, relations with those of the opposite sex in peer groups, choices of amusements and entertainment in accordance with college authorities' interpretation of Christian standards as they relate to our social setting.

The pledge each student signs stating that he will abide by college regulations shall be given as a serious commitment to a policy of willingness to relegate personal feelings and rights to a standard of submission to college regulations which will benefit the entire college community.

Observance to all college regulations shall be given in a spirit of Christian cooperation.

Expressions of complaint or concern about any general campus regulations shall be presented to the Campus Relations Committee as constructive criticism. Residence hall problems should be presented to the Hall Councils or the Inter-hall Council. This shall be the proper procedure for action on matters about which there is disagreement or concern for changes which are being made.

At all times students shall strive to maintain attitudes and standards of conduct which will be consistent with highest ideals of Christian living.

CAMPUS RELATIONS COMMITTEE

College students feel a desire for the responsibility for making decisions, and yet realize the need for careful guidance in governing themselves. In order to help meet these needs the Campus Relations Committee has been organized. This committee is responsible for its actions to the college administration through the Dean of Students, Dean of Women, and various head residents.

The committee shall be composed of students chosen as follows: three students from the senior class, two from the junior class, two from the sophomore class, and one from the freshman class. At least one of the senior students chosen must be an off-campus resident to represent the commuting students. Faculty representation on the committee shall consist of the Dean of Students, Dean of Women, Dean of Men, and a faculty representative.

The chairman of the committee shall be a student chosen by the members of the committee. The committee shall meet twice monthly.

The functions of the committee shall consist of hearing suggestions, complaints, recommendations; making recommendations to the administration, faculty or student government; establishing campus regulations in those matters which fall within its jurisdiction; recommending disciplinary action, with the exception of cases which require probation or suspension from college, or cases of such nature that they should be handled by the Dean of Students or other administrators.

Any student may appeal action to suspend or dismiss to the President within 5 days of the action.

RESIDENCE HALL COUNCILS

In each residence hall there shall be a council to aid in the administration of each of the residence halls. Each council shall consist of the head resident, assistants, and elected representatives from each living area within the hall. The representative shall be elected by the students in the residence hall and shall outnumber by at least two the number of assistants and head residents on the council.

Each council shall aid in establishing residence hall regulations for their own hall in accordance with general regulations.

Each council shall recommend disciplinary actions, consider suggestions and complaints, and make recommendations to the proper authorities.

INTER-HALL COUNCIL

The President and one other elected representative from each hall council and the Head Resident of each hall shall make up the Inter-Hall Council.

This Council works to coordinate the activities and help find solutions for problems of the total resident campus. They shall meet monthly or on call by the chairman, a student member of the group elected by the group at its first meeting.

DISCIPLINARY ACTIONS

A student may be placed on this probationary status and privileges forfeited and/or work assigned as a result of poor citizenship in the Dining Hall, Residence Hall and/or other areas.

Functional Authority may be exercised by Head Residents or Dining Room Host or Hostess after conferring.

For more serious situations a student may be placed on probationary status. Privileges are not usually forfeited, but any reoccurrence of the original misdemeanor or any other serious infraction of the regulations or ideals of the college will be grounds for an automatic recommendation of suspension or dismissal by the Dean of Students to the Administrative Committee. The student shall be and his parents may be informed in writing of this action and may appeal within five days to the campus relations committee or administration. Additional stipulations may or may not be a part of this action and is left to the Dean of Students to determine in consultation with the President and/or the committee involved.

Functional Authority may be exercised by the Dean of Students after conferring with the President.

Residence Hall Communities

QUIET TIME

Set aside time each day for Bible study, prayer, and meditation. You will need this, and dividends result spiritually, socially, and mentally.

SPACE LIMITS

Resist the temptation to bring non-essential things with you to college. Bring only the items of clothing as designated in the clothing charts on pages 24 and 25. Only the following electrical appliances are permitted in residence hall rooms: personal clock, radio, record player, electric blankets, shaver, hair dryer. Heating appliances, cooking appliances, and irons are not to be used in the rooms. Extension cords constitute fire hazards and are forbidden by fire regulations. Firearms must be turned over to the Dean of Students and checked out for each use.

IN AND OUT

Students must observe the following schedule of residence hall hours:

Sunday through Thursday:

Doors are closed at 10:30 p.m.

Friday and Saturday:

Doors are closed at 12:00 midnight

Except for cases involving an approved group activity, e.g. overnight choir trip, any student planning to stay away from the dorm overnight must receive permission from the Head Resident of his hall before making any final arrangements. Students must also arrange with their Head Resident and sign out as to destination and time of return before going out of town at a greater distance than 15 miles.

Freshmen and sophomores have three late privileges each term; Juniors and Seniors are allowed six late privileges each term. These may be taken any time within a given term. This means that those taking late leaves may come into the hall one hour later than the prescribed arrival time. All requests for late leaves must be cleared with the Head Resident involved in advance of your planned late leave.

STUDY AND QUIET HOURS

Residence hall floors are to be quiet from 7:00 p.m. to 8:00 a.m. Monday through Thursday. The hours from 7:30 to 9:30 p.m. Monday through Thursday are reserved for study, with the exception of the Wednesday night student prayer meeting. No organized meetings shall be scheduled during this time without express permission from the Dean of Students. Hall lights will be turned off during study hours to assist in setting an atmosphere for quiet. All students are expected to be in their hall or in the library studying during study hours. Permission to attend a non-campus program occurring on a night Monday through Thursday must be secured from your Head Resident.

VISITS AND VISITORS

Men students planning to visit in the home of women students on weekends, or vice versa, must have a written invitation from the host parents, received via U.S. Mail, a written approval from one's own parents and approval from the Head Resident before any arrangements are completed for such a visit, except when the students are home on vacation. The respective Deans may grant permission for men to visit men and women to visit women students.

VACATIONS

The college does not assume any obligation for any student during the vacation periods; therefore, students will not be permitted to remain on campus during a vacation without express permission from the administration.

LOUNGES AND LAUNDRY REGULATIONS

The residence hall lounges are provided for visiting, waiting for your date, small group meetings and bull sessions, listening to records, viewing TV at stated hours, and as a meeting place for a class on special occasions. The lounge is *not* for use as a place to sleep, slouch, or smooch.

Students should dress in a manner appropriate to public areas. Sports clothes can be worn after 5:00 p.m. except for Wednesdays and Sundays.

Laundry facilities shall not be used after 11:00 p.m. or on Sundays.

Off-Campus Living Arrangements

All unmarried students under 21 must live in on-campus housing except by special permission of the Dean of Students. Petitions are granted for living with close relatives, for proven financial need, or for physical disabilities requiring care. At the beginning of each year those over 21 and others seeking permission to live off-campus must fill out the Request Form from the Dean of Students Office.

College policy further requires that those men under 21, living off-campus take one meal a day in the college dining commons, except by special arrangement with the Administrative Committee.

Dining Services

Our food service is contracted to SAGA, a well-known firm on college campuses. All meals are cafeteria style, with the exception of Wednesday evening and Sunday noon which will be served family style.

We take our meals at the hours posted in the dining hall. Form the ON TIME habit, for tardiness is not permitted except for emergencies. If it is necessary to be excused early from a meal served family style, please make advance arrangements with the dining hall hostess. If it is necessary to eat early at any time, permission must be secured from the Dean of Students or head resident. Constructive criticisms and suggestions should be made to the Student Host, the Host or Hostess or to a member of the Dining Services Advisory Committee.

LUNCHES

Members of clubs or committees meeting during the lunch periods may carry their trays to the committee rooms if located in either Heacock Commons or Student Union Building.

DINING HALL DRESS

Wednesday evenings and Sunday noons are designated as Guest Meals at which you are expected to dress according to the clothing chart for these occasions. Approved campus attire is expected for all other meals as defined also on the clothing chart.

GUEST TICKETS

One guest ticket will be available each term to every GF student taking all his meals at the dining commons. These tickets will be good for only the term they are issued, and cannot be accumulated. They may be obtained from the dining hall host or hostess at least one meal prior to the one for which they are to be used. Guest tickets may not be used for another George Fox College student, but are reserved for parents or guests. Under this program any one person can be the recipient of only one complimentary ticket per term.

INDIVIDUAL MEAL CHARGES

Lunch for off campus students will be served on a term basis at the rate of \$.60 per student per day.

Meal charges for guests will be as follows:

Breakfast	\$.60	Dinner	1.10
Lunch	.80	Steak dinner	1.85

Group rates for special occasion dinners or banquets are subject to negotiation with SAGA.

Health and Medical Services

PHYSICAL EXAMINATION

Before admission to college the student must have a physical examination by a reputable medical physician, including tests mentioned in the college medical form.

HEALTH HABITS

All students are urged to maintain good health habits, including daily exercises and sports. In event of illness or injury the college nurse will grant an excuse from class. Excuse for any other reason must be obtained from the Dean of Students.

COLLEGE DISPENSARY

The college dispensary located in Pennington Hall is open to all students at regularly scheduled hours during the week.

DENTAL SERVICES

Students needing dental service must make such arrangements privately at their own expense.

MEDICAL PLAN

Medical and Hospitalization Plan under OPS is covered as a part of the General Fee and is described on page 12 of the catalog.

Clothing Clues

Students are expected to cooperate in maintaining highest standards of propriety and modesty in attire worn for all occasions. Collegiate standards of dress shall be given consideration in all choices of attire to be worn.

Formal gowns shall be of modest cut and design approved by the Dean of Women. Dinner dresses, classroom dresses, skirts and blouses shall meet those standards of collegiate attire as approved by the Dean of Women. Suits, slacks and shirts, and all classroom apparel for men shall meet established standards as approved by the Dean of Men. Casual wear, such as capris, peddle pushers, slacks, T-shirts, Bermuda shorts, and blue denim levis shall be reserved for appropriate occasions as outlined in a later paragraph.

All attire at all times should guarantee neat appearance. Hem lines shall not be above knee length. Clothes shall be sufficiently loose in fit and so designed to conform to the standards of modesty desired on the George Fox College campus. Bermuda shorts, or any other kind of shorts, shall be of a length approaching the knee. Dark blue denims shall be worn *only* for grubbies during the times specified, *not* as classroom attire.

Casual sport clothes dubbed "grubbies" denote such apparel as blue denim levis, Bermuda shorts, capri trousers, T-shirts, slacks, etc. Such clothes worn by George Fox students must meet acceptable standards of modesty, propriety, and neatness. Grubbies may be worn on Friday from 1:00 p.m. through Saturday with the following restrictions:

No grubbies may be worn in classrooms, laboratories, library, administration building, or dining hall. (Exception: Grubbies may be worn to meals on Friday evenings and to meals on Saturdays.) No grubbies are to be worn on weekends when pre-announced guests are on campus. Classroom attire is proper when guests are on campus.

The deans and/or head residents shall advise as to the propriety of all clothes and shall have jurisdiction to govern the decisions as to the suitability of clothes to be worn. They shall insist that inappropriate clothes not be worn under any circumstances.

Clothing Clues: Men

ACTIVITY	CLOTHING	ACCESSORIES
Classes and downtown	Slacks, faded denims (not levis) Cords, Sport Shirts, Sweaters, jackets	Casual shoes
Evening Meals	Same as for classes and downtown	Casual shoes
Wednesday dinners	Dress suits, or slacks and sport coat with white shirt and tie or sport shirt with closed collar	Dress shoes
Semi-formal, concerts, recitals, plays	Dress suits, white shirt and tie	Dress shoes
Formal (formal designation is not formal in the strict sense)	Dark suit White shirt with conservative tie	Dress shoes
Spectator Sports	School clothes (same as classes and downtown)	Casual shoes
Sunday Dress	Dress suits with white shirts and ties Tailored coats with slacks	Dress shoes
Performance in chapel	Slacks and tailored coats with ties and dress shirts or closed collar sport shirt with tailored coats and slacks Dress suits	Dress shoes

Slacks, shirts, and sweaters with appropriate shoes and jackets constitute acceptable attire for most college occasions. Grubbies are permissible on Friday afternoons and Saturdays under approved conditions.

Clothing Clues: Women

ACTIVITY	CLOTHING	ACCESSORIES
Classes and Downtown	Cottons	Flats or Sandals
Evening Meals	Skirts, jumpers and dresses	Same as for classes and downtown
Wednesday Evening Meals	Suits and afternoon dresses	Hose and dress shoes (heels preferred)
Semi-formal concerts, recitals, plays, dinner dates, teas)	Afternoon dresses, suits	Hats, essential until 4 p.m. and expected in the majority of cases
Formal (banquets, receptions)	Modest Ballerina or full length dresses	Heels or formal slippers
Spectator Sports	School clothes (same as classes and downtown)	Same as classes and downtown
Sunday Dress	Suits, afternoon dresses	Hose and heels, gloves and hat (preferred)
Performance in chapel or in church	Suits, afternoon dresses	Hose with dress shoes

Dresses or skirts and blouses or sweaters constitute acceptable attire for most college occasions. Grubbies are not to be worn downtown or for general campus wear, but should be reserved only for appropriate occasions. For formal affairs, inappropriate evening attire is not to be worn. Your head resident or the Dean of Women will be glad to give sensible advice and help regarding the propriety of your attire.

Dating "Do's"

To insure the happiest and most exciting experiences in dating, it is suggested that men and women plan to meet each other primarily only on special occasions and make each date an interesting and somewhat different experience. Students shall at all times conduct themselves in relation to members of the opposite sex in a manner conducive to the development of finest Christian relationships. Students shall refrain from embracing members of the opposite sex in any public place on or off campus. In their courtship behavior in private, students shall refrain from actions which would lead to temptation, or which would be a hindrance to the Christian experience or testimony of either person. Remember: The person you date may become your spouse! Plans to marry within the year are all subject to regulations on page 14 of the college catalog.

Motor Vehicles

The operation of a car by a college student should be a carefully guarded privilege. Therefore, each student bringing a car to the campus must register the car and secure a permit for the privilege of using it. Unmarried minor freshmen will not be allowed to bring cars to college and will not operate cars while enrolled as freshmen in college except as follows:

1. If an unmarried minor freshman has a 2.5 GPA or above for the first term, he will be allowed to bring his car the second (& third term if 2.5 GPA is maintained) for use on weekends only or by special permission of his Head Resident. (Weekend being 4 p.m. Friday to 10:30 p.m. Sunday).
2. If being deprived of having a car at college causes a severe hardship in the case of a student, he may write to the Dean of Students stating his case. The Administrative Committee will make the final decision concerning his car.

Registering and securing of permits to operate cars shall be cared for with the Dean of students at the time students register for classes. Every student enrolled in the college must comply with the following if he wishes to operate a car:

1. A valid driver's license in his possession,
2. Oregon state minimum liability insurance must be in force,
3. The car must be in acceptable running condition, and
4. Payment of the campus operating permit fee of \$2.

Upon proof of these conditions being acceptable each student will be issued a permit and sticker for his car.

Faculty, seniors and visitors are those who are privileged to drive cars through the crescent drive to Wood-Mar Hall. Students are provided ample parking space in Pennington Hall parking area and on streets adjacent to the campus. It is urgently requested that students not park in front of homes facing streets surrounding the campus.

No extensive repair work will be done by students on cars on campus without permission from the Dean of Students. All minor repair work and washing and waxing of cars must be done at the east end of the Pennington parking lot except as otherwise designated.

Any self-propelled vehicle such as motor cycles and motor scooters must also come under the same regulations as cars. Freshmen should not plan to bring any motor driven vehicle to college.

Students who find it impossible to abide by these regulations will suffer the payment of a fine. If a case of repeated violations occurs, the student will be asked to face the Campus Relations Committee. He may be asked to surrender his keys for a stated period of time or face other disciplinary action.

Student Employment

Requests for employment outside the college are handled through the office of the Dean of Students. Students desiring off-campus jobs should contact him.

The college helps worthy students to the extent possible within a limited budget of \$2000 per month. Priority is given to upper division students, those in greatest financial need, those who take full courses, those who owe the college more via board, room, etc., and those whose former record demonstrates their ambition, faithfulness to duty, and cooperation. Those with highest scholarship grants may receive less than others. Final decision on the distribution of labor will be made by the business manager.

Certain persons on the faculty or staff will be assigned to the oversight of each building. Students are responsible to these assigned persons.

Whom to See for What You Want

Student Announcements	Weekly Student Bulletin Bulletin board in Student Union Building
Faculty Announcements	Bulletin near general office
Chapel Announcements to be made	Dean of Faculty before 9:00 a.m. on day to be announced
Co-curricular calendar	Dean of Students or Student Director of Activities
Financial aid	Dean of Administration
Guests (arrangements for)	Head resident of your dormitory and dining hall hostess
Lost and Found	Dean of Students
Present names of prospective students	Director of Admissions
Publicity and publications	Director of Public Relations
Scheduling activities	Dean of Students or Student Director of Activities
School supplies	Bookstore or Soda Fountain
Concessions	Junior class
Request for: Music for programs Deputation	Music faculty Faculty Deputation Chairman or Student Director of Deputation
Report illness	Head resident of your dormitory; then report to college nurse
Have a chapel suggestion	Director of Student Activities
Want to schedule an organization meeting	Director of Student Organizations
Have an item of business for Student Council or Student Body action	ASGFC President
Want to run for an ASGFC office or try out for the yell squad	ASGFC Vice President
Disagree with Student Council or Student Body action	Supreme Court
Have a question about campus regulations	Campus Relations Committee
Have organization funds to deposit	ASGFC Assistant Treasurer
Want to see an improvement in the Student Union Building	Student Union Board
Want to have a concert scheduled on campus	Culture Committee
Have an article to be published	CRESCENT Editor
Need a Student Body Card	ASGFC Secretary
Want to know where your student affairs fees go	ASGFC Treasurer
Want publicity put out for some campus event	ASGFC Director of Publicity
Have pictures for the school annual	L'AMI Editor

Your Guide to Student Government

STUDENT BODY OFFICERS

1965 - 66

President - Fred Gregory

Vice President - Jim Lingenfelter

Secretary - Shirley Mewhinney

Treasurer - Lorraine Stahlnecker

Director of Student Activities - Sam Drinnon

Director of Student Organizations - Edith Cammack

Director of Publicity - Will Howell

THE CRESCENT Editor - Carolyn Harmon

L'AMI Editor - Nancy Forsythe

Student Union Board Chairman - Jim Linhart

Chief Justice - Jon Bishop

Senior Class President - Del Meliza

Junior Class President - Bob Peterson

Sophomore Class President - LeRoy Foster

Freshman Class President -

ASGFC FINANCIAL SYSTEM

I. ASGFC GENERAL FUNDS

A. Withdrawing funds.

1. Bills to be paid.
 - a. Place them in the Deposit Box in the Student Union Building.
 - b. Vice President makes out a warrant.
 - c. President signs the warrant.
 - d. Treasurer makes out a check for stated amount.
2. Items purchased by individuals.
 - a. Leave receipt in Deposit Box with your name on it.
 - b. Same procedure is then followed as with charged items.

B. Depositing funds.

1. Cash must be given to the Treasurer personally or placed in the Deposit Box.
2. A statement should accompany the deposit stating the nature of the deposit.
3. Securing money in advance.
 - a. This may be done with items in the ASGFC budget (parties, etc.)
 - b. Place signed written request in the Deposit Box.
 - c. Same procedure as above then follows.
 - d. After purchases are made an itemized report of expenditures and remaining funds must be submitted to the Treasurer.

II. ORGANIZATION OR CLASS FUNDS.

A. Withdrawing funds.

1. Place warrant in the Deposit Box.
 - a. This is to be signed by the organization president or vice president and treasurer.
 - b. The stub should be kept for organization records.
 - c. Assistant Treasurer will then make out the check.

B. Depositing funds.

1. These are to be given to the ASGFC Assistant Treasurer or placed in Deposit Box.
2. The process follows that of the Treasurer.

III. GENERAL INSTRUCTIONS.

- A. Each class or club is to keep their financial records in the central record system in the Student Union.
- B. Regular reports should be submitted by each treasurer to their organization regularly.
- C. Monthly reports of the ASGFC Treasurer and Assistant Treasurer are made to the Student Council and posted on the student bulletin board.
- D. The ASGFC Budget which appears in this handbook is approved each year following the election of officers.

ASGFC 1965-66 BUDGET

GENERAL FUND

Expenses:

Class Dues (@ \$3 per student)	\$ 975.00
Student Union (@ \$24)	7,800.00
Athletic Fund (@ \$8.50)	2,762.50
L'Ami (@ \$5)	1,625.00
Student Pictures, L'Ami (@ \$3)	975.00
Crescent (@ \$3.50)	1,137.50
Cultural Events (@ \$1.50)	500.00
Intramural Director's Salary	225.00
Intramurals	315.00
All-School Outing, Fall	150.00
All-School Outing, Spring	300.00
Mimeograph Supplies and Office Expense	75.00
Student Handbook (including student government, campus regulations & activity calendar).	250.00
ASGFC Directory	50.00
Publicity	100.00
Rally Squad Transportation	400.00
Rally Squad Uniforms (5 @ \$25)	125.00
Rally Squad Accessories	25.00
May Day	200.00
Homecoming	125.00
Monthly Socials	200.00

After-Game Socials	150.00
Christmas Formal	400.00
Valentine Formal	200.00
Student Council Retreats (2)	75.00
Conferences	75.00
L'Ami Editor	150.00
Crescent Editor	150.00
ASGFC President	100.00
Director of Activities	75.00
ASGFC Secretary	50.00
Miscellaneous (B.J., auditing books, etc.)	150.00
Reserve Fund	160.00

TOTAL EXPENSES \$19,890.00

GENERAL FUND

Receipts:

Student Fees (@ \$60)	\$19,500.00
Miscellaneous Income	550.00

TOTAL RECEIPTS \$20,050.00

L'AMI BUDGET 1965-1966

EXPENSES:

Printing	\$ 2,300.00
Pictures	975.00
Photography	125.00
Extra	100.00
Enlarger	20.00
Miscellaneous	65.00

TOTAL \$ 3,585.00

INCOME:

Fees	\$ 1,625.00
Pictures	975.00
Ads	1,000.00

TOTAL \$ 3,600.00

CRESCENT BUDGET 1965-1966

EXPENSES:

Printing	\$ 1,683.30
Photography	80.00
Supplies	40.00
Enlarger Payment	20.00
Film	30.00
Stamps	10.00
Miscellaneous	20.00

TOTAL \$ 1,883.30

RECEIPTS:

Student Fees (@ \$3.50)	\$ 1,137.50
Ad Income	750.00

TOTAL \$ 1,887.50

DUTIES OF OFFICERS

PRESIDENT

I. CONSTITUTIONAL DUTIES

- A. Perform the usual duties pertaining to the office as stated in Robert's Rules of order.
- B. Be an ex-officio member of all committees of this association.
- C. Be responsible for the efficient and active functioning of the ASGFC.

II. MISCELLANEOUS DUTIES.

- A. See that all ASGFC officers are fulfilling their duties and filling their office in a satisfactory way.
 1. Start checking on Homecoming plans in September (Director of Activities)
 2. Check on May Day plans in March. (Director of Activities)
 3. See that officer pins are ordered during March. (Secretary)
 4. Order rally squad awards in April. (Secretary)
 5. See that bills are paid promptly. (Vice President, Treasurer)
 6. Work on superior chapel programs. (Director of Activities and SCU Program Chairman)
- B. Represent the students to the faculty, administration, and community.
- C. As a member of the Willamette Christian College League cooperation committee, with the college president, work in close cooperation with this group. Work toward closer unity with other Christian colleges.
- D. Work with and support the Oregon Federation of Collegiate Leaders. (OFCL)
- E. Begin talking up the ASGFC elections and encouraging thought about candidacy in the elections (April) in January and February.

III. PERSONAL DUTIES

- A. Be friendly and helpful to all.
- B. Be an example of a faithful Christian, student and leader.
 1. Take part in religious functions
 2. Attend and participate in student body functions.
 3. Be serious and diligent in study.
 4. Be characterized by positive, wholesome attitudes.
- C. Maintain daily communion and fellowship with God. Depend on Him for strength and guidance; then give Him credit for what is done.
- D. Maintain a humble, sincere attitude at all times.
- E. Remember that all are equal in the Student Body and that it is impossible to please everyone.

VICE PRESIDENT

I. BASIC RESPONSIBILITIES.

- A. Warrant all the bills credited to the ASGFC.
- B. Have charge of devotions and the flag salute at the beginning of each ASGFC meeting.
- C. Set up the Club Council jointly with the Director of Student Organizations.
- D. Be responsible for the effective functioning of all organizations under the ASGFC in accordance with the Constitution..

II. ELECTIONS

- A. Supervise the following elections:
 1. Rally squad and yell queen or king.
 2. Homecoming queen and court.
 3. Valentine queen and king.
 4. May queen and prince consort.
 5. ASGFC elections.
- B. Prepare and distribute ballots, supervise the ballot box and count ballots.

III. COMMITTEES

- A. Serve on the Club Committee.
- B. Serve on an organization advisory committee.
- C. Form and head up the ASGFC election committee which should:
 1. Stimulate interest in Student Body offices.
 2. Approve all candidates' petitions.
 3. Post all candidate information sheets, general rules, etc.

SECRETARY

I. CONSTITUTIONAL DUTIES

- A. Keep minutes of all official ASGFC and Student Council meetings.
- B. Post minutes within 24 hours of the meetings.
- C. Keep and post a record of attendance at Student Council meetings.
- D. Issue student body cards at the beginning of each term.
- E. Post announcements of all called meetings at least 24 hours ahead of the meeting.
- F. Attend to all matters of correspondence within the student body.

II. SUGGESTIONS

- A. Keep a record of all minor secretarial expenses and turn in a bill to the treasurer.
- B. Alphabetize student body cards before distributing and divide them into class sections. The switchboard operators in dorms can put cards in boxes there.
- C. Keep carbon copies of important correspondence and also of notes sent with each check when it is mailed.
- D. Keep the filing system organized.
- E. Type all treasurer's reports. Make carbon copies for distribution in Student Council meetings. Post all treasurer's reports.
- F. Remember that the secretary is often asked to do jobs not outlined in the Constitution. Many times other members of the Student Council will need typing done. Smile and say, "yes."

TREASURER

I. DUTIES

- A. Maintain a commercial account in a Newberg bank.
 1. This account is in the U.S. National Bank.
 2. The new treasurer should go to the bank with the old treasurer to change the account immediately after installation.
- B. Deposit the Student Affairs Fees each term.
 1. See the bursar about these at the beginning of each term.
 2. After the money is in the bank, Crescent and L'Ami funds are transferred to those accounts. (In the books only)
- C. Maintain a journal of the ASGFC General Account.
 1. This includes the accounts of the Crescent and L'Ami.
 2. He should know, at any time, the general condition of the accounts.
- D. Issue receipts for all funds received and deposit them within a week after receiving them.
 1. If funds received are in the form of currency, they should be deposited immediately.
- E. Receive and file warrants and issue all ASGFC General Account checks.
 1. Warrants are received from the vice-president. He puts the warrants in the Deposit Box in the Student Union Building which the treasurer is to check each day.
 2. Checks are written only after a warrant is received and as soon as possible thereafter.
 3. Local bills are paid by the treasurer; the secretary mails distant bills.
 4. All warrants are kept and filed with respective checks at the end of each month.

- F. Submit a financial report to the Student Council monthly. This shall include a listing of all receipts and expenditures together with an itemized balance.
 1. This should be made out immediately after the first of the month so that the secretary can type out copies for the first student council meeting of the month.
- G. Serve as chairman of the Budget Committee.
 1. Work with the past and future officers who are involved in using the student fees, to prepare a budget for the following year.
 2. Start working on this soon after the installation so it can be approved by Student Council and the ASGFC before the end of the year.
- H. Appoint, with the approval of Student Council, an assistant Treasurer whose duties are as outlined in the Standing Rules.
- I. The ASGFC financial accounts shall be audited after the end of each school year.

DIRECTOR OF STUDENT ACTIVITIES

I. SCHEDULING OF ALL ACTIVITIES INVOLVING STUDENTS.

- A. Maintain a calendar in the office of the Dean of Students, Student Body office, and SUB bulletin board.
- B. Prepare calendars for each student — printed or mimeographed.
- C. Meet with the Dean of Students, Director of Organizations, and Director of Publicity, to coordinate scheduling. One period should be designated for this each week.

II. CHAIRMAN OF SOCIAL COMMITTEE WHICH PLANS ALL ACTIVITIES INVOLVING ALL STUDENTS.

- A. Homecoming, May Day.
 1. Consult the Standing Rules and ASGFC files for information.
 2. Appoint committees about five months in advance — general committee and subcommittees. Faculty advisor on each committee.
 3. Operate within the budget — See that bills are channelled through the ASGFC Treasurer.
 4. Work with the Vice-President in the elections of royalty.
- B. All-school outings.
 1. Work out suitable place — it should have recreation and eating facilities.
 2. Provide adequate transportation.
 - a. Busses are preferable.
 - b. ASGFC funds will cover the entire cost of the spring outing.
 3. Coordinate with such things as Old Gold and Navy Blue Day, etc.
 4. See that the faculty is invited.
- C. Christmas formal, Valentine Formal.
 1. Have a club sponsor or create a special committee.
 2. Consult ASGFC files and WCCL Correspondence Chairman for information on entertainment. This should be secured two weeks in advance.
 3. Consult the Standing Rules for traditions on royalty, etc.
 4. Secure additional funds for sponsoring group if needed.
 5. See that arrangements are made for decorations — This is done by individual tables at Christmas formal and by committee at the Valentine Formal.
- D. Monthly parties.
 1. Arrange for clubs to sponsor them or set up special committees.
 2. Work closely with the sponsoring group in all of the plans.
 3. Activities such as films can be scheduled at times of lesser activity.
- E. Student Council Retreats.
 1. Schedule a retreat soon after the beginning of each term.
 2. Arrange for transportation, meeting place, and food.
- F. Chapel Committee.

George Fox College Activities Calendar

1965-66



George Fox College has a rapidly improving program, which offers to its students opportunity for academic achievement, spiritual growth, and participation in a high caliber social program.

"LET THEIR LEARNING
BE LIBERAL . . . BUT
LET IT BE USEFUL
KNOWLEDGE, SUCH
AS IS CONSISTENT
WITH TRUTH AND
CONLINESS."

GEORGE FOX

Carved wood panel at foyer of the
Shambaugh Library. Each of the
new buildings is replete with quo-
tations from notable Quakers.

SEPTEMBER 1965

Sunday	Monday	Tuesday	Wednesday	Thursday	Friday	Saturday
			1	2	3	4 George Fox College Trustees Retreat
5	6	7	8	9	10	11
12	13	14	15	16	17	18 PRE-SCHOOL FACULTY CONFERENCE-----
19	20	21 4 PM Dorms Open	22 ORIENTATION AND REGISTRATION-----	23	24	25 Football Game Seattle Cavaliers Here
26 CONVOCATION	27 CLASSES BEGIN	28	29	30		



Queen Ilene I

To every man there openeth a way,
and ways.
The high soul climbs the high way,
the low soul gropes the low;
And in between on the misty flats,
the rest drift to and fro;
But to every man there openeth a
high way and a low,
And every man decideth the way he
will go.

—Author unknown

Queen and Court at Breakfast

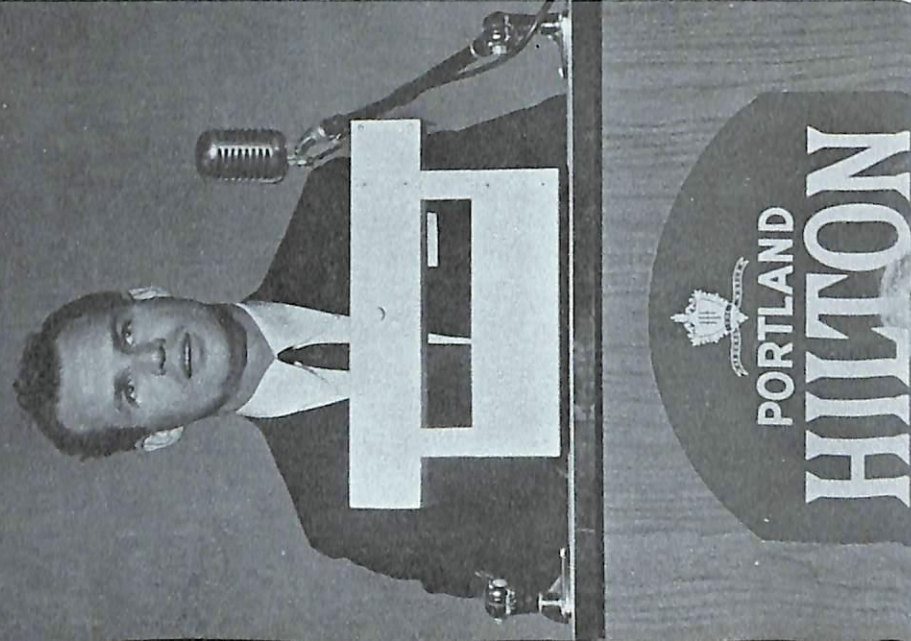


HOMEcoming 1964

NOVEMBER 1965

Sunday	Monday	Tuesday	Wednesday	Thursday	Friday	Saturday
	1	2	3	4	5	6 Football Game Southern Oregon There - 1:30 PM
7	8	9 Cultural Event: Marilyn Neeley- Pianist	10	11	12	13 Football Game OCE There
14	15	16	17	18	19 Last day to drop a course with "WP" or "WF"	20 All-School Party
21	22	23	24	25 THANKSGIVING VACATION	26	27
28 -----	29 Registration for winter term	30 Music Recital				

Wayne Adams gives a short,
but dynamic devotional thought
at our Christmas Formal.



CHRISTMAS FORMAL 1964

And she shall bring forth a son, and thou shalt call his name Jesus: for he shall save his people from their sins.

Now all this was done, that it might be fulfilled which was spoken of the Lord by the prophet, saying, behold, a virgin shall be with child, and shall bring forth a son, and they shall call his name Emmanuel, which being interpreted is, God with us.

Then Joseph being raised from sleep did as the angel of the Lord had bidden him, and took unto him his wife:

And knew her not till she had brought forth her firstborn son: and he called his name Jesus.

A view of the gracious and formal atmosphere enjoyed by those who attended the 1964 Christmas Formal.



DECEMBER 1965

Sunday	Monday	Tuesday	Wednesday	Thursday	Friday	Saturday
			1	2	3	4
			Registration for winter term-----	Fall Play	Fall Play	Fall Play
5	6	7	8	9	10	11
		Basketball Game NCC There			CHRISTMAS FORMAL	BB Game NCC-Here WRA Invit. HS Volleyball Tournament Wrestling
12	13	14	15	16	17	18
Messiah or Choir Concert	Final Exams-----				Term Ends	
19	20	21	22	23	24	25
	CHRISTMAS VACATION (December 20-January 3)					
26	27	28	29	30	31	
	Friends Youth Mid-Winter Conference-----					

INTRAMURALS

Students as they have an active part in intramurals



WHAT IS IT?

Intramurals is a recreation program provided by the students for the students. The program is operated by the students under the supervision of the Physical Education Department. Activities in individual and team sports are provided.

WHO CAN PARTICIPATE?

All students that attend GFC with the exception of varsity athletes. That is, varsity athletes cannot participate in the sport of which they are varsity members. It is the hope of the intramural staff that all students will participate and make creative suggestions.

WHY INTRAMURALS?

It is the purpose of education to produce the "integrated personality." That is, to produce a person mentally, spiritually, socially and physically able to handle life's problems. Intramurals is an educational process.

"It makes no difference what his eventual destiny, for so long as he lives, his highest achievements, mentally, spiritually, culturally, and artistically, must be expressed through the medium of his physical being."

¹Nixon, John E., AN INTRODUCTION TO PHYSICAL EDUCATION.

JANUARY 1966

Sunday	Monday	Tuesday	Wednesday	Thursday	Friday	Saturday
						1
2	3 Classes Begin	4	5	6	7 Basketball Game Oregon Tech Here	8 Wrestling Basketball Game Oregon Tech Here
9	10 Last day to change program without penalty	11	12	13	14 Monthly Social Last day to enroll in new course Basketball - There Warner Pacific	15 Basketball Game Warner Pacific Here
16	17	18 Basketball Game OCE Here	19	20	21 Play-- "Reading Theatre" Basketball Game SOC - There	22 Play-- "Reading Theatre" Basketball Game SOC - There Wrestling
23	24	25 Basketball Game OCE There	26	27	28 Last day to drop a course with a "W" Basketball Game EOC - Here	29 Future Freshman Day BB - EOC - Here Wrestling Alumni Assn. Mid-year Mtg.
30	31					

TRADITIONS

A college becomes known for the body of traditions that give it a distinct personality. These traditions are a part of the college; live up to them and enjoy a fuller college life.

Senior Privileges

1. Only seniors may pick flowers or shrubs; they are also responsible for the proper care of the rose garden.
2. Applause in chapel is to originate with the seniors; and classes are to leave chapel according to class, beginning with the seniors.
3. The seniors are to have first choice in the election of a faculty sponsor; then juniors, sophomores, and freshmen.
4. Only senior men may appear on the campus with a mustache or beard.
5. Seniors are permitted a "Sneak" day under the guidance of their advisor.
6. Seniors are the only students who are permitted to drive or park in the "crescent drive."

Juniors

1. Juniors are responsible for all money concessions.
2. Any fund-raising projects must have junior class approval.
3. They also decorate for baccalaureate and commencement and designate one man and one woman from their class to lead the procession on these two occasions.
4. Juniors sponsor the Junior-Senior banquet.

Sophomores

1. Take the Initiative in welcoming the freshmen in cooperation with designated campus organizations.

Freshmen

1. Are responsible for campus clean-up preceding Homecoming.
2. Build a bonfire for Homecoming Pep Rally.
3. Set up dining hall for Wednesday evening SCU Prayer Meetings.

Interclass Rivalry

INTRAMURALS (See month of January)

OLD GOLD AND NAVY BLUE DAY—A time when all classes compete in a field event.

- BRUIN JUNIOR
1. Bruin Junior Activities shall consist of inter-class competitive events.
 2. Bruin Junior shall be placed in a showcase with hats for each class to indicate possession.
 3. A Bruin Junior Committee shall be composed of the Director of Student Activities and an elected representative from each class.
 4. The Committee shall select two activities per term such as water sports and novel events such as pole climbing, raft races, bicycle races, and obstacle courses, etc. subject to Student Council approval.
 5. The Committee shall announce the events within one week after the beginning of each term. The announcement

(TRADITIONS continued on back page of calendar)

FEBRUARY 1966

Sunday	Monday	Tuesday	Wednesday	Thursday	Friday	Saturday
		1 Band Concert	2	3	4 ^x Basketball-There Oregon Tech	5 Basketball-There Oregon Tech Wrestling
6 Gold Q Welcoming Party - 3 PM	7	8 Basketball - Here Cascade <i>Band Concert</i>	9	10	11 Valentine Formal	12 Basketball-There Cascade Wrestling
13	14	15 Basketball - Here OCE	16	17	18 Basketball - Here SOC	19 Basketball - Here SOC Wrestling
20	21	22 Basketball-There OCE	23	24 ^{Play}	25 Last day to drop a course with a WP or WF BB - EOC -There NAIA Wrestling Play	26 Basketball-There EOC
27		OYM Mid-Year Board Meetings				
	28	CHRISTIAN VOCATIONS WEEK Registration for Spring term begins				

A scene from the play "The Romancers"



How to schedule an activity

1. Pick up Activity Slip from Dean of Student's Office.
2. Fill out and get the signature of the Director of Activities.
3. Return to Dean of Student's office two weeks in advance of activity.

Clark Adams and Nancy Forsythe holding the best actor and best actress awards for the homecoming plays. The name of the play was "Modesty".



MARCH 1966

Sunday	Monday	Tuesday	Wednesday	Thursday	Friday	Saturday
		1 Music Recital Registration for spring term-- CHRISTIAN VOCATIONS WEEK--	2	3 Cultural Event-- Bishop's Players	4 Birthday Banquet Pacific Coast Intercollegiate Wrestling	5
6	7	8	9	10	11 NWIW National Wrestling	12
13	14	15	16	17	18	19
	Final Exams				Term Ends	
20	21	22	23 CHOIR TOUR	24	25	26
	Spring Vacation Week					
27 Home Choir Concert	28 Classes Begin	29	30	31		



Pastor Fine, our guest speaker for Fall Christian Emphasis Week.

In the morning, prayer is the key that opens to us the treasures of God's mercies and blessings; in the evening, it is the key that shuts us up under His protection and safeguard.



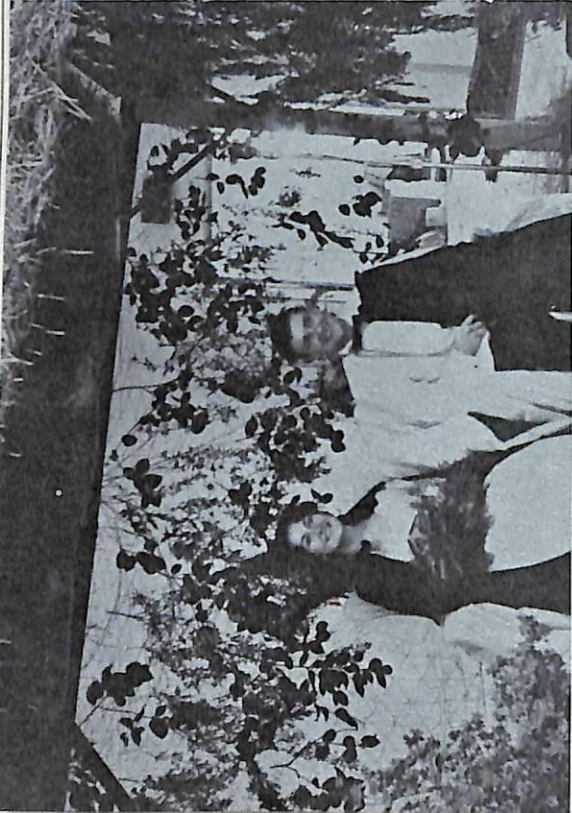
Student Christian Union prayer meeting is active part of GFC

He who prays as he ought will endeavor to live as he prays.

—Owen

APRIL 1966

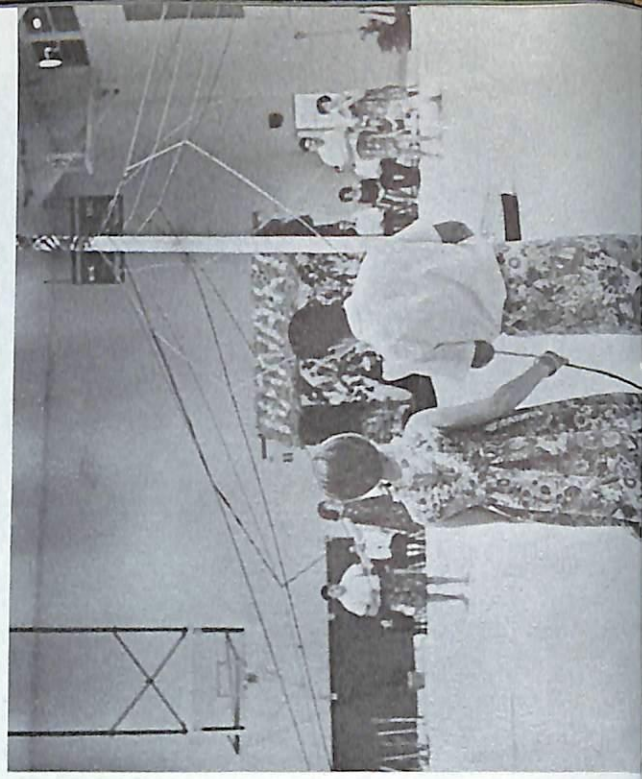
Sunday	Monday	Tuesday	Wednesday	Thursday	Friday	Saturday
					1 Christian Drama One-Acts	2 Christian Drama One-Acts
3	4 Last day to change program without penalty.	5	6	7	8 Last day to enroll in new course.	9
10 EASTER	11	12 3rd Cultural Event OYM Ministers' Conference	13	14	15 ASGFC Primary Elections Gold Q Banquet Baseball - EOC There - 3 PM	16 Baseball EOC There - 10 AM
17	18	19	20	21	22 ASGFC Elections Last day to drop a course with a "W" Sadie Hawkins Party Here - 10 AM BP - SOC - Here	23 Baseball SOC Here - 10 AM
24	25	26	27	28 Soph-Senior Testing	29 Baseball Oregon Tech There - 3 PM	30 Baseball Oregon Tech There - 10 AM



Queen Elaine I and Prince Consort, Fred Gregory as they enjoy the May Day program.

Mediocrity can talk, but it is for genius to observe.

—Disraeli



In the background the Queen and her court enjoy a rather unique theme as the maypole winders carry out the tradition of winding the theme. This year's maypole winding theme was South Pacific. The over-all theme for May Day was Hanaki as is written on the roof of the Queen's Hut.

MAY DAY 1965

MAY 1966

Sunday	Monday	Tuesday	Wednesday	Thursday	Friday	Saturday
1	2	3	4	5 Play	6 Play Baseball OCE Here - 3 PM	7 Play MAY DAY Baseball OCE Here - 10 AM
8 Quartet Festival	9	10	11	12	13 Awards Banquet NAIA District Baseball----- WRA Outing	14
15	16	17	18	19	20 Band Concert Last day to drop a course with WP or WF NAIA Regional Baseball-----	21 Choir Banquet -----
22	23	24	25	26 Music Recital	27 All-School Outing	28
29 Oratorio Choir	30	31				



"GRADUATION"

The first step to knowledge is to
know that we are ignorant.
—Cecil

JUNE 1966

Sunday	Monday	Tuesday	Wednesday	Thursday	Friday	Saturday
			1	2	3	4 Annual Meeting— Board of Trustees Alumni Banquet
5 BACCALAUREATE and COMMENCEMENT	6 Final Exams	7	8	9	10 Commencement Dinner Term Ends	11
12	13	14	15	16	17	18
19	20	21	22	23	24	25
26	27	28	29	30		

shall include rules, dates, and other details and shall be placed on the Student Body Bulletin Board.

6. The winning class of each event shall be allowed to place their hat on Bruin Junior until the next event.

Publications

THE CRESCENT is the official newspaper issued every other Friday. One copy to a student. L'AMI yearbook is issued in the fall, giving the story of the previous school year through pictures and brief writeups.

Traditional Days

All planning for traditional days is carried out by students and faculty.

HOMECOMING is observed on Saturday, November 7. It is a special day for welcoming home the grads and friends of the college. A special program is held in the morning, and a football game in the afternoon. A banquet in the evening is followed by a dramatic production.

CHRISTMAS is commemorated with a formal banquet and appropriate program.

VALENTINE'S DAY is remembered by a formal party, climaxed by the crowning of the King and Queen of Hearts.

MAY DAY, celebrated on Saturday, May 2, is one of the great traditions of the campus. Breakfast is served to the public. Luncheon, crowning of the Queen, winding of the Maypole, baseball game, an evening meal, and a musical program constitute the events of the day.

Traditional Events and Activities

THE FACULTY RECEPTION is held on the first Friday night of the school year. This formal evening is in honor of the new students.

THE STUDENT CHRISTIAN UNION sponsors big and little brother and sister activities and party in welcoming new students to the campus.

A SPORTS BANQUET is given in honor of athletic teams.

THE A CAPELLA CHOIR has a spring banquet.

All students are honored at the BIRTHDAY DINNER each spring, with recognition of each calendar month.

CLASS PARTIES are held infrequently during the year, which, combined with the special events, games and organization meetings, offer a variety of situations for development of social experience and relaxation from classes.

1. Meet with the faculty chapel committee to represent the interests of the students.
2. Set up a student chapel committee to evaluate chapels and gather information on student opinion and suggestions for chapel — The SCU Program Chairman and one representative from each class will serve on this committee.

DIRECTOR OF STUDENT ORGANIZATIONS

I. SERVE IN AN ADVISORY CAPACITY TO ALL ORGANIZATIONS.

A. Scheduling.

1. Organization presidents are to fill out forms to schedule meetings.
2. Organization meetings may be held on Monday during chapel period. Conflicts in organization personnel should be avoided in scheduling.
3. Meetings may be held during the noon hour if arrangements are made with the dining hall.
4. One night meeting may be scheduled each term.

B. Advising.

1. Head up an organization advisory committee.
 - a. Meet with each organization president at least once a year to review their plans and conformity with the Constitution.
 - b. The committee is made up of the Director of Student Activities, President, Vice-President and Dean of Students.
2. Informally advise organizations to see that their purposes are carried out.
3. Meet with organizations whenever possible.

II. DIRECT CLUB COMMITTEE

- A. Inform all organization presidents of their position on this committee.
- B. Set up a time for regular meetings. (at least monthly)
- C. Consider problems faced by organizations such as scheduling, planning of activities, etc.
- D. Present recommendations from this group to Student Council.

III. PLAN OLD GOLD AND NAVY BLUE DAY.

- A. Hold it in the spring, possibly in connection with an All school outing.
- B. Secure the needed equipment, officials, and record forms.
- C. Encourage class competition and participation.

IV. PROMOTE ATHLETIC ACTIVITIES.

- A. Work with the Athletic Director of the college, Foxmen, and Gold Q on this.
- B. See that half-time entertainment is secured for as many home athletic events as possible. (football and basketball)
- C. Assist in promoting intramural and varsity athletics.

DIRECTOR OF PUBLICITY

I. BASIC DUTIES.

- A. Provide for a complete and accurate publicity coverage of all ASGFC organization activities, drama, music, athletic, and religious events to the entire student body and faculty, in cooperation with the respective organizations.
- B. Keep all student bulletin boards in neat and up-to-date order.
- C. Work in cooperation with the Director of Student Activities and the college Public Relations office.

II. FULFILLING THE DUTIES.

- A. Set up a publicity committee.
 1. There should be no more than five members.
 2. They should be creative and have artistic ability.
- B. Committee meetings should be held once a week.
- C. Publicity should be put out at least a week ahead of time.

- D. Meetings with the Director of Student Activities, Director of Student Organizations, and Dean of Students will be held each week.
- E. Materials should be chosen with the idea of color and variety.
- F. Supplies should be purchased in quantity with ASGFC funds.
- G. Bulletin boards should be watched every day and notices put up or taken down as desired.
- H. Special events should be publicized in the community in cooperation with the Director of Public Relations of the college.

CHIEF JUSTICE

I. DUTIES

- A. Act as chairman of the Supreme Court.
 - 1. Preside at all cases and hearings.
 - 2. Preside at other meetings of the Supreme Court.
- B. Call monthly meetings of the Supreme Court to discuss the constitutionality of all student activities and decisions.
 - 1. Schedule monthly meetings on the basis of a definite time and place.
 - 2. Post notices of all monthly meetings of the Supreme Court.
 - 3. Encourage the attendance at these meetings of all students with questions of the constitutionality of any ASGFC activity or decision.
 - 4. Call all special meetings of the Supreme Court.

II. RENDER ALL DECISIONS OF THE SUPREME COURT.

- A. Direct the publishing of all Supreme Court decisions.
- B. All court case decisions become officially announced when the court recorder posts notice of decisions on the main bulletin board.

III. RECEIVE THE WRITTEN APPEAL OF ANY STUDENT OR GROUP OF STUDENTS.

- A. Any student or group of students has the privilege of presenting a written and signed appeal to the Chief Justice.
- B. Appeals may be made on any decision by student government or on any questions concerning the constitutionality of any student activity.

IV. CALL MEETINGS WITHIN TEN DAYS AFTER RECEIVING A WRITTEN APPEAL FROM ANY STUDENT OR GROUP OF STUDENTS.

- A. The Court must convene within ten days following its presentation of any appeal.
- B. Court cases have no time limit.

V. NOTIFY THE DEFENDANT OF THE CHARGES AGAINST HIM AT LEAST THREE DAYS PRIOR TO THE HEARING.

- A. The defendant is given at least three days to prepare his case.

CRESCENT EDITOR

I. DUTIES.

- A. Publish fourteen issues of "The Crescent" annually in harmony with the ideals of the college.
- B. Appoint necessary staff members and direct staff in all the work.
- C. Give a fair and complete coverage of GFC news.
- D. Maintain accurate records of finances; submit a monthly financial report to Student Council.
- E. Keep policies subject to Student Council and Publication Council approval.

II. METHODS OF FULFILLING DUTIES.

- A. Hold weekly meetings of the full staff and bi-weekly meetings of the editorial staff.
- B. Prepare the paper efficiently.
 - 1. Reporters take story assignments.

- 2. Reporters complete story and turn in copy.
- 3. Copy is processed and sent to printer.
- 4. Proofs are returned for reading.
- 5. Final proofs are completed by printer on Friday.
- 6. Editor and staff do "paste-up" of final proofs on Friday evening.
- 7. Crescents arrive on campus from printers on Monday afternoon.

STUDENT UNION BOARD CHAIRMAN

I. PRESIDE OVER AND DIRECT THE STUDENT UNION BOARD.

- A. Conduct regular meetings and call special ones when needed.
- B. Consult the Board on all major decisions.
- C. Poll members when individual decisions do not require a meeting.

II. REPRESENT THE INTERESTS OF THE BOARD.

- A. To the Administration.
- B. To the students.
- C. To Student Council.

III. LEAD IN THE DEVELOPMENT OF THE STUDENT UNION BUILDING.

- A. Be alert to possibilities for increasing the beauty and utility of the building.
- B. Be aware of needed changes in rules as well as the building itself.

IV. CARRY OUT THE SPECIFIC DUTIES IN THE SUB BOOK OF RULES.

L'AMI EDITOR

I. BE RESPONSIBLE FOR THE CREATING OF A YEARBOOK.

- A. This is to be in written and pictorial form a record of the year's activities.
- B. The L'Ami is compiled during the year and presented to the students the following autumn.

II. APPOINT AND DIRECT A STAFF TO COMPLETE THE WORK.

- A. Select those who have experience or interest in this area.
- B. See that each staff member understands his job and completes the work.
- C. Particular attention should be given to the business manager's task of securing adequate advertising.

III. DETERMINE AND FOLLOW A SCHEDULE FOR THE YEAR

- A. Hold regular staff meetings to carry on the work.
- B. Set and meet deadlines for the various parts (student pictures, club pictures, etc.).
- C. Secure an adequate coverage of events as they occur.

IV. DETERMINE THAT THE ANNUAL WILL BE THE BEST POSSIBLE.

- A. See that its tone conforms to the ideals of the college.
- B. Make each phase of it as complete and attractive as possible.
- C. Stay within the budget determined at the beginning of the year.

CLASS PRESIDENTS

I. DUTIES

- A. Preside over class meetings to be held at least once a month.
- B. Call and preside over executive meetings as the need may arise.
- C. Be an ex-officio member of all committees.
- D. Represent the class on the Student Council.
- E. Head up the planning and direction of class projects. (Fund-raising, social, service, etc.)

II. CUES

- A. Do everything possible to get the class to function as a unit.
- B. Seek to channel class spirit and competition in proper directions.

ORGANIZATIONS

Here are the organizations with some word regarding them:

The constitutions of all student organizations are filed in the Dean of Students' office and can be secured by any student for reference. No student organization can be formed without permission of the student council and the faculty. Students are warned against becoming involved in too many co-curricular activities. Therefore, it is recommended that students limit themselves to the number of offices in student organizations they accept. No student should accept more than one major office, although he may participate in other minor offices while holding a major office. Membership in various clubs should also be held to a minimum.

CIRCLE K

- A. Purpose
 - 1. To serve the campus and community.
 - 2. To build character and leadership.
 - 3. To carry on the traditions of Kiwanis International.
- B. Activities
 - 1. Weekly luncheon meetings.
 - 2. Occasional social affairs.
 - 3. Numerous service projects.
 - 4. Fund-raising programs.
- C. Membership
 - 1. Male students of George Fox College.
 - 2. Good character and scholastic standing.
 - 3. Invitations issued each year.

FOREIGN MISSIONS FELLOWSHIP

- A. Purpose
 - 1. To promote foreign and home missions and to stimulate interest in these.
 - 2. To provide fellowship for those called to or interested in mission service.
 - 3. To cooperate with the national Inter-Varsity Christian Fellowship.
- B. Activities
 - 1. Regular meetings.
 - 2. Occasional chapels.
 - 3. Student prayer meetings (early morning).
- C. Membership
 - 1. Anyone interested in missions.
 - 2. Particularly those feeling a call to mission work.

FOXMEN

- A. Purpose
 - 1. Promote the athletic program of the college.
 - 2. Develop school spirit.
 - 3. Maintain a Christian witness for the college through inter-collegiate athletics.
- B. Activities
 - 1. Annual Invitational Basketball Tournament.
 - 2. Pep rallies.
 - 3. After-game parties.
- C. Membership
 - 1. Earning of a varsity letter.
 - 2. Vote of acceptance by members.

GOLD Q

- A. Purpose
 - 1. Promote greater participation in and attendance at athletic activities.
 - 2. Promote athletic events among college women.
- B. Activities
 - 1. Membership party.
 - 2. Sports days, hiking, bicycle riding.
- C. Membership
 - 1. Earn letter in two major sports (softball, basketball, volleyball) for active membership.
 - 2. Earn letter in one major sport for associate membership.
 - 3. Vote of acceptance based on interest.

PI GAMMA SIGMA

- A. Purpose
 - 1. Recognize high scholastic attainment and ability.
 - 2. Promote interest in intellectually challenging activities on campus.
 - 3. Serve as the campus honor society.
- B. Activities
 - 1. Honors chapel for those meeting requirements for membership.
 - 2. Ushering for the faculty lecture.
 - 3. Reception for honors freshmen and new students.
- C. Membership
 - 1. Active - Upper division students at GFC with a cumulative GPA of 3.4 while carrying not less than 12 hours per term.
 - 2. Associate - Students who have completed at least 45 hours with a cumulative GPA of 3.4 or more.

STUDENT CHRISTIAN UNION

- A. Purpose
 - 1. To co-ordinate and promote student Christian activities.
 - 2. To sponsor prayer meetings, deputation work, socials and special evangelistic efforts.
- B. Activities
 - 1. Weekly evening prayer meetings.
 - 2. Weekly chapel.
 - 3. Fall and Spring Christian Emphasis Weeks.
 - 4. Missions project.
 - 5. Deputation groups.
 - 6. Social activities.
- C. Membership
 - 1. Be an acknowledged Christian.
 - 2. Sign a membership card and live accordingly.

STUDENT EDUCATION ASSOCIATION

- A. Purpose
 - 1. Benefit students preparing for teaching careers by presenting information on opportunities and requirements in the field.
 - 2. Provide opportunity for becoming acquainted with other future teachers on campus.
- B. Activities
 - 1. Chapel.
 - 2. Evening meetings (speakers, panels, and discussions).
 - 3. Barbecue.
- C. Membership
 - 1. All those interested in the field of education.
 - 2. Voluntary joining.

STUDENT MINISTERIAL ASSOCIATION

- A. Purpose
 - 1. To help those who feel a call to the ministry to gain a better un-

derstanding of the requirements of the ministry and to secure practical help in preparation for that work.

2. To encourage young people who seem to be qualified to enter the ministry to consider the nature of the calling and to help them to understand and obey God's will for them.

B. Activities

1. Regular meetings with ministers and other Christian workers as speakers.
2. Cooperation with Christian Vocations Week sponsored by the Friends Church.

C. Membership

1. Those in the ministry and those who are considering it as a call.
2. Both women and men are welcome to the meetings.

ALPHA PSI OMEGA

A. Purpose

1. To stimulate interest in dramatic activities on the campus.
2. To secure for the college all the advantages of a large national honorary fraternity.
3. Reward those who have done commendable work in the dramatic field.

B. Activities

1. One-Act Play Contest.
2. Assisting with all dramatic productions.

C. Membership

1. Major role in one long or two one-act plays, or minor role in three full length or five one-act plays, writing a play, serving as business manager or student director of two plays.
2. Approval by the faculty director.
3. Passing a test as stipulated by the national Alpha Psi Omega.

ATHENIANS

A. Purpose

1. Discuss philosophical problems.
2. Encourage creative thinking.
3. Stimulate obedience to the command to love Christ with all the mind.

B. Activities

1. Evening discussion meetings.
2. Chapel programs.

C. Membership

1. Any interested student taking or having taken courses in the field of philosophy.
2. No formal membership arrangement exists.

SCRIBBLERS

A. Purpose

1. To stimulate the development of creative writing by Language Arts majors and other interested students.
2. To foster a greater appreciation of literature.

B. Activities

1. Poet Laureate Contest.
2. Publishing the "Scribbler" for May Day.
3. Public reading of literary works.

C. Membership

1. English majors and other interested students.
2. Vote of acceptance by the current members.
3. Invitational membership shall not exceed 10% of the Student Body. Preference will be given to upperclassmen.
4. Freshmen may not join until the end of their freshman year.

**RULES OF THE STUDENT UNION
OF THE A.S.G.F.C.**

ARTICLE I. Duties of Officers

Sec. 1. All new officers and representatives elected to the Board shall assume their duties concurrently with the Installation of the A.S.G.F.C. officers. During the month of May the replaced officers shall serve as advisors to the new officers.

Sec. 2. The Chairman shall:

1. Preside at all meetings of the S.U. Board, vote in event of a tie, and be responsible for the active and efficient functioning of the S.U. Board.
2. Perform the usual duties pertaining to his office.
3. Especially assist the business manager in carrying out his duties.

Sec. 3. The Secretary shall:

1. Keep accurate minutes of all S.U. Board meetings in a record book.
2. Be official correspondent for the S.U. Board.
3. Keep an attendance record of the S.U. Board meetings and notify the Board of delinquent members.
4. Notify members of special meetings.
5. Be responsible for the official book of standing rules.
6. Be responsible to chairman for any secretarial duties which are necessary.

Sec. 4. The Treasurer shall:

1. Maintain a proper accounting record of all financial transactions of the S.U. Board.
2. Present a written, itemized financial report at the first regular meeting of each month.
3. Carry out the rules of finance in article II.

Sec. 5. The Business Manager shall:

1. Announce the opening of the position of Student Union Building Custodian by April 15, and receive applications. (See Article III, section I, part 2.)
2. Draw up contracts as stipulated for the S.U.B. Custodian and Proprietors of the soda fountain. (See Article III, section I and Article V, section 1.)
3. Be responsible for all rules in Article III, "maintenance."
4. Be the purchasing agent of the S.U. Board.

Sec. 6. ALL officers and members shall:

1. Be expected to attend all S.U. Board Meetings. If a member is absent without excuse two times he shall be sent a warning, and upon a third unexcused absence his dismissal shall be recommended to the appropriate authority.
2. The S.U. Board shall decide what constitutes an excused absence.
3. Represent the student body in an unbiased working for the benefit of the majority.

ARTICLE II. Finance

Sec. 1. The account of the Student Union Building shall be kept in the United States National Bank, Newberg, Oregon.

1. Checks shall be signed by a designated administrative member and either the S.U. Board Chairman or treasurer.

Sec. 2. A budget shall be drawn up each spring for the following year by the S.U. treasurer and after S.U. Board approval, shall be presented for ASGFC approval before the close of school in the spring.

ARTICLE III. Maintenance

Sec. 1. Choosing the Custodian

1. He shall be chosen by the S.U. Board within seven days after student body elections results are announced.
2. He shall apply for the position by written application to the S.U. Board stating his qualifications and purpose.
3. He shall sign a contract binding him to clean and to maintain the building as prescribed by Article III, section 3, "Duties of the Custodian."

Sec. 2 Qualifications of Custodian:

1. This job shall be his main source of employment.
2. He shall be a full-time student at G.F.C.
3. He may be married or single.
4. He shall have attended G.F.C. at least one term.

Sec. 3. Duties of the Custodian:

1. He shall meet with the incumbent custodian in the spring in which he is chosen and learn how to care for the S.U.B.
2. The S.U.B. shall be cleaned for the summer by both the old and the new custodian.
3. The custodian shall be responsible for cleaning and maintenance as prescribed by the S.U.B. contract.

Sec. 4 Salary of the S.U. Custodian:

1. Shall be designated by the S.U. Board and specified in his contract. He shall be paid monthly by check.

Sec. 5 Summer Maintenance.

1. During the summer vacation, the Dean of Students, or in his absence the Dean of Administration or Dean of Faculty, may grant the use of the building with the understanding that it will be properly maintained.
2. The Administration may make repairs that require immediate attention or have Board approval.

ARTICLE IV. Use of Building

Sec. 1. Student Use

1. They shall use the S.U.B. except when it is scheduled for group use. The S.U.B. shall be opened from 7:00 a.m. until five minutes before dorm hours seven days of the week with the following exceptions:
 - a. Wednesday it shall be closed during SCU prayer meeting.
 - b. Saturday it shall be opened at noon.
 - c. Sunday it shall be opened at 12:15 p.m. and shall be closed one hour before evening service of Newberg Friends Church and until 8:30 p.m.
 - d. When the S.U. Board specifies that it shall be closed.
2. They shall maintain proper decorum while in the S.U.B.
3. The glass sliding doors shall be used only when side walks are dry.
4. The Hi-Fi record player, television set, piano, or comparable equipment shall not be moved except by supervision of the S.U. Custodian. (They shall not be removed from the S.U.B. except by S.U. Board permission.)
5. In case of proven disregard of the above rules, a student shall be served a written warning notice by the S.U. Board. If he persists in disregarding these rules, he may be asked to discontinue use of the S.U.B. for an indefinite period. (By S.U. Board action.)
6. If general violation of the above rules persists, the S.U. Board has the right to close the S.U.B. to general use for no more than one week at a time, with a notice posted as to why the S.U.B. was closed.

Sec. 2. Group use.

1. Groups within the ASGFC or outside groups whose purpose is similar to the ASGFC, may use the S.U.B. for private meetings with S.U. Board approval.
 - a. A group MUST apply to the S.U. Board Chairman for use of the S.U.B. in writing two weeks before their meeting.
 - b. Certain groups within the college and heavy contributors (such as alumni) may use the S.U.B. rent-free.
 - c. Other outside groups shall pay a rental fee of \$15 on weekday evenings and \$25 on weekend evenings.
 - d. The Custodian shall close the building to general use one hour before a scheduled meeting.
2. ASGFC socials, such as after-game parties, which reoccur during the year may be approved by the S.U. Board through the Director of Student Activities for the entire year.
3. Clubs and organizations may use the Council Room or other unused rooms for meetings cleared through the Director of Student Activities of the ASGFC.
4. The Publications Rooms shall be used by the "Crescent" and "L'ami" staffs as well as other S.U. Board approved purposes.
5. All groups, organizations, clubs and staffs using any part of the S.U.B. shall clean up all refuse and put materials in order after using a room.

ARTICLE V. Soda Fountain

Sec. 1. Management:

1. The S.U.B. shall manage the Student Union Store.
2. Proprietors of the Student Union Store shall be bound by a contract including rules of maintenance, inventory, and operating times. (see Article I, section 5, part 2.)

Sec. 2. Health Laws:

1. The Business Manager shall make known the state health laws affecting the Student Union Store to the proprietors.

ARTICLE VI. Revision of Rules:

1. A standing rule may be deleted and/or a new rule adopted by two-thirds vote of the S.U. Board.
2. The ASGFC may overrule any Board decision by a two-thirds vote of the ASGFC.
3. All decisions of the ASGFC are final.

CONSTITUTION OF THE ASSOCIATED STUDENTS OF GEORGE FOX COLLEGE

PREAMBLE

We, the students of George Fox College, being authorized by the Board of Trustees, and desiring to develop individual Christian initiative and to further the free and effective functioning of representative student government, do hereby establish this constitution.

ARTICLE I

Name, Symbols, and Purpose

Section 1.

The name of this organization shall be "The Associated Students of George Fox College (ASGFC)."

1. He shall be chosen by the S.U. Board within seven days after student body elections results are announced.
2. He shall apply for the position by written application to the S.U. Board stating his qualifications and purpose.
3. He shall sign a contract binding him to clean and to maintain the building as prescribed by Article III, section 3. "Duties of the Custodian."

Sec. 2 Qualifications of Custodian:

1. This job shall be his main source of employment.
2. He shall be a full-time student at G.F.C.
3. He may be married or single.
4. He shall have attended G.F.C. at least one term.

Sec. 3. Duties of the Custodian:

1. He shall meet with the incumbent custodian in the spring in which he is chosen and learn how to care for the S.U.B.
2. The S.U.B. shall be cleaned for the summer by both the old and the new custodian.
3. The custodian shall be responsible for cleaning and maintenance as prescribed by the S.U.B. contract.

Sec. 4 Salary of the S.U. Custodian:

1. Shall be designated by the S.U. Board and specified in his contract. He shall be paid monthly by check.

Sec. 5 Summer Maintenance.

1. During the summer vacation, the Dean of Students, or in his absence the Dean of Administration or Dean of Faculty, may grant the use of the building with the understanding that it will be properly maintained.
2. The Administration may make repairs that require immediate attention or have Board approval.

ARTICLE IV. Use of Building

Sec. 1. Student Use

1. They shall use the S.U.B. except when it is scheduled for group use. The S.U.B. shall be opened from 7:00 a.m. until five minutes before dorm hours seven days of the week with the following exceptions:
 - a. Wednesday it shall be closed during SCU prayer meeting.
 - b. Saturday it shall be opened at noon.
 - c. Sunday it shall be opened at 12:15 p.m. and shall be closed one hour before evening service of Newberg Friends Church and until 8:30 p.m.
 - d. When the S.U. Board specifies that it shall be closed.
2. They shall maintain proper decorum while in the S.U.B.
3. The glass sliding doors shall be used only when side walks are dry.
4. The Hi-Fi record player, television set, piano, or comparable equipment shall not be moved except by supervision of the S.U. Custodian. (They shall not be removed from the S.U.B. except by S.U. Board permission.)
5. In case of proven disregard of the above rules, a student shall be served a written warning notice by the S.U. Board. If he persists in disregarding these rules, he may be asked to discontinue use of the S.U.B. for an indefinite period. (By S.U. Board action.)
6. If general violation of the above rules persists, the S.U. Board has the right to close the S.U.B. to general use for no more than one week at a time, with a notice posted as to why the S.U.B. was closed.

Sec. 2. Group use.

1. Groups within the ASGFC or outside groups whose purpose is similar to the ASGFC, may use the S.U.B. for private meetings with S.U. Board approval.
 - a. A group MUST apply to the S.U. Board Chairman for use of the S.U.B. in writing two weeks before their meeting.
 - b. Certain groups within the college and heavy contributors (such as alumni) may use the S.U.B. rent-free.
 - c. Other outside groups shall pay a rental fee of \$15 on weekday evenings and \$25 on weekend evenings.
 - d. The Custodian shall close the building to general use one hour before a scheduled meeting.
2. ASGFC socials, such as after-game parties, which reoccur during the year may be approved by the S.U. Board through the Director of Student Activities for the entire year.
3. Clubs and organizations may use the Council Room or other unused rooms for meetings cleared through the Director of Student Activities of the ASGFC.
4. The Publications Rooms shall be used by the "Crescent" and "L'ami" staffs as well as other S.U. Board approved purposes.
5. All groups, organizations, clubs and staffs using any part of the S.U.B. shall clean up all refuse and put materials in order after using a room.

ARTICLE V. Soda Fountain

Sec. 1. Management:

1. The S.U.B. shall manage the Student Union Store.
2. Proprietors of the Student Union Store shall be bound by a contract including rules of maintenance, inventory, and operating times. (see Article I, section 5, part 2.)

Sec. 2. Health Laws:

1. The Business Manager shall make known the state health laws affecting the Student Union Store to the proprietors.

ARTICLE VI. Revision of Rules:

1. A standing rule may be deleted and/or a new rule adopted by two-thirds vote of the S.U. Board.
2. The ASGFC may overrule any Board decision by a two-thirds vote of the ASGFC.
3. All decisions of the ASGFC are final.

CONSTITUTION OF THE ASSOCIATED STUDENTS OF GEORGE FOX COLLEGE

PREAMBLE

We, the students of George Fox College, being authorized by the Board of Trustees, and desiring to develop individual Christian initiative and to further the free and effective functioning of representative student government, do hereby establish this constitution.

ARTICLE I

Name, Symbols, and Purpose

Section 1.

The name of this organization shall be "The Associated Students of George Fox College (ASGFC)."

Section 2.

1. The official colors of the ASGFC shall be Old Gold and Navy Blue.
2. The official song of the ASGFC shall be "Close Beside Chehalem's Mountain."

Section 3.

The purposes of this organization shall be to handle matters of student government and finances and to help develop Christian character and leadership skills consistent with the policies of the ASGFC and college.

ARTICLE II

Requirements for Membership

Section 1.

All students enrolled in George Fox College who have paid their Student Affairs Fee shall be members of the ASGFC.

ARTICLE III

Officers

Section 1.

The officers of the ASGFC shall be President, Vice President, Chief Justice, Secretary, Treasurer, Director of Student Activities, Director of Student Organizations, Director of Publicity, The CRESCENT editor, L'AMI editor, and Chairman of the Student Union Board.

Section 2.

All officers shall be elected by the ASGFC, the term of office being for one year. Installation shall occur during the first ASGFC meeting after May Day.

Section 3.

The officers of the ASGFC shall perform the duties pertaining to their office as stipulated in the By-Laws.

ARTICLE IV

Dues

Section 1.

Student Body fees shall be recommended by Student Council and approved by the ASGFC.

ARTICLE V

Meetings

Section 1.

One regular business meeting of the ASGFC shall be held each month, at a time determined by Student Council.

Section 2.

Special meetings of the ASGFC shall be called by the President and be posted at least twenty-four hours before the meeting is to be held.

Section 3.

Two-thirds of the membership of the ASGFC shall constitute a quorum.

Section 4.

The ASGFC shall have legislative powers.

ARTICLE VI

Student Council

Section 1.

The executive power of the ASGFC shall be vested in the Student Council. Student Council shall also have legislative powers.

Section 2.

The Student Council shall be composed of President, Vice President, Secretary, Treasurer, Director of Student Activities, Director of Student Organizations, Director of Publicity, L'AMI editor, THE CRESCENT editor, Student Union Board Chairman, and presidents of the Senior, Junior, Sophomore, and Freshman classes as well as Faculty Advisor (member with no voting power).

Section 3.

Purposes and duties of the Student Council shall be as stipulated in the By-Laws.

ARTICLE VII

Supreme Court

Section 1.

The judicial power of the ASGFC shall be vested in the Supreme Court.

Section 2.

The Supreme Court shall be composed of the Chief Justice and representatives of the Senior, Junior, Sophomore, Freshman classes, as well as a faculty advisor (with no voting power) appointed by the court.

Section 3.

Duties, purposes, and procedures shall be as stipulated in the By-Laws.

ARTICLE VIII

Section 1. The CRESCENT shall:

1. Be published at least 14 times annually.
2. Give a fair and complete coverage of George Fox College news.
3. Maintain an accurate record of its finances.
4. Have its circulation and policies subject to the approval of the Student Council and the Publications council, in accordance with Article VII, Section 2, of the By-Laws

Section 2. The L'AMI shall:

1. Be an annual publication.
2. Present in written and pictorial form, a record of the year's activities.
3. Maintain an accurate record of its finances.
4. Have its circulation and policies subject to the approval of the Student Council and the Publications council.

ARTICLE IX

Organizations

Section 1.

1. Any group of students may be authorized as an organization upon approval of a constitution submitted to the Student Council and filed in the office of the Dean of Students.
2. An organization must carry out its purposes as defined in its constitution.
3. An organization must keep all records according to Article V of the Standing Rules.
4. Upon failure of Section 1, Part 2, Article IX of this Constitution, the Student Council may declare the organization nonexistent.

ARTICLE X

Student Union Board

Section 1.

The administration and control of the Student Union Building shall be vested in the Student Union Board.

Section 2.

Members and duties of the Student Union Board shall be as stipulated in the By-Laws.

ARTICLE XI

Rules for Amending the Constitution

Section 1.

The proposed amendment must be signed by at least ten members of the ASGFC and must be handed to the Secretary in writing by anyone of the signers. The President shall then call a meeting of the ASGFC. The meeting shall be held within two weeks after the Secretary has received the proposed amendment. Notice of this meeting with a full statement of the amendment shall be posted not less than a week previous to the meeting.

Section 2.

A quorum must be present. Voting shall be by ballot. Adoption shall require a 2/3 vote. This must be at least a majority of the members.

Section 3.

Amendments are to take effect immediately upon their adoption.

Section 4.

When an amendment has been adopted, it shall be added to the Constitution as an amendment, with the date of adoption.

ARTICLE XII

Adoption and Execution

Section 1.

Adoption and execution of this Constitution shall be as stipulated in Article X of the By-Laws.

THE BY-LAWS OF THE ASGFC

ARTICLE I

Section 1.

Robert's Rules of Order shall govern and be the parliamentary authority of the Association in all cases in which they are consistent with the Constitution, By-Laws, and Standing Rules of the ASGFC.

ARTICLE II

Membership Provisions

Section 1.

Membership in the ASGFC entitles a member to a subscription of THE CRESCENT, a copy of the L'AMI (if he is a member for three consecutive terms); right to debate; right to vote in all ASGFC elections; free admission to all regular home athletic events. Every member is entitled to participate in all ASGFC activities and functions except for restrictions by the Administration.

Section 2.

An Associated Students Ticket shall be given to each member of the ASGFC within three weeks after his student affairs fees have been paid.

ARTICLE III

Officers of the ASGFC

Section 1. Duties

1. The President shall:

- a. Perform the usual duties pertaining to the office as stated in Robert's Rules of Order.
- b. Be an ex-officio member of all committees of this association.
- c. Be responsible for the efficient and active function of the ASGFC.

2. The Vice President shall:

- a. Assist the President and assume the official duties of the President in his absence.
- b. Warrant all general funds of the ASGFC.
- c. Be in charge of all ASGFC elections, in agreement with Student Council.
- d. Be responsible for the effective functioning of all organizations under the ASGFC in accordance with this constitution, By-Laws, and Standing Rules.
- e. Be in charge of devotions and the flag salute at the beginning of each ASGFC meeting.

3. The Chief Justice shall:

- a. Act as chairman of the Supreme Court.
- b. Call monthly meetings of the Supreme Court to discuss the constitutionality of all student activities and decisions.
- c. Render all decisions of the Supreme Court.
- d. Receive the written appeal of any student or group of students.
- e. Call meetings within 10 days after receiving a written appeal from any student or group of students.
- f. Notify the defendant of the charges against him at least three days prior to the trial.

4. The Secretary shall:

- a. Perform the usual duties of the office as in Robert's Rules of Order.
- b. Post all minutes of Student Council and Student Body meetings within at least twenty-four hours after the meeting.
- c. Post notice of all ASGFC meetings at least twenty-four hours prior to the meeting.

5. The Treasurer shall:

- a. Maintain a commercial account in a Newberg bank.
- b. Deposit the Student Affairs Fees each term.
- c. Maintain a journal of the ASGFC General Account.
- d. Issue receipts for all funds received and deposit them within a week after receiving them.
- e. Receive and file warrants and issue all ASGFC General Account checks.
- f. Submit a financial report to the Student Council monthly. This shall include a listing of all receipts and expenditures together with an itemized balance.
- g. Serve as chairman of the Budget Committee.
- h. Appoint, with the approval of the Student Council, an assistant treasurer whose duties are as outlined in the Standing Rules.

6. The Director of Student Activities shall:

- a. Be responsible for the scheduling of all student activities in cooperation with the Dean of Students.
- b. Direct in the planning of all activities involving all students, e.g. Homecoming, May Day, Christmas Formal, Valentine Formal, All-School Outings, monthly parties, etc. In the case of activities sponsored by organizations, he shall work directly with the organization and with the Director of Organizations.
- c. He shall meet regularly with the Dean of Students, Director of Organizations, and Director of Publicity to coordinate scheduling.
- d. He shall serve on the Chapel Committee and represent student interests on this group.

7. The Director of Student Organizations shall:

- a. Serve in an advisory capacity to organizations. He shall schedule their meetings and activities with the approval of the Director of Student Activities and the Dean of Students.
- b. He shall periodically meet with the Club Committee composed of organization presidents. He shall represent their interests on Student Council.
- c. He shall work with student organizations and the athletic department in planning Old Gold and Navy Blue Day, half-time entertainment for home games, and in promoting intramural and varsity athletics.

8. The Director of Publicity shall:

- a. Provide for a complete and accurate publicity coverage of all ASGFC organization activities, drama, music, athletic, and religious events to the entire Student Body and faculty, in cooperation with the respective organizations.
- b. Keep all Student bulletin boards in neat and up-to-date order.
- c. Work in cooperation with the Director of Student Activities and the college Public Relations office.

9. The CRESCENT Editor shall:

- a. Be responsible for the publication of a student newspaper called THE CRESCENT which shall be in harmony with the ideals of the college.
- b. Appoint necessary staff members for the efficient publication of THE CRESCENT.
- c. Maintain THE CRESCENT in accordance with Article VIII, Section 1 of the Constitution.
- d. Submit a monthly financial report to Student Council.

10. The L'AMI Editor shall:

- a. Be responsible for the publication of a yearbook called the L'AMI which shall be in harmony with the ideals of the college.
 - b. Submit a monthly report to the Student Council concerning the progress of the L'AMI.
 - c. Appoint necessary staff members for efficient publication of the L'AMI.
 - d. Maintain the L'AMI in accordance with Article VIII, Section 2 of the Constitution.
11. The Chairman of the Student Union Board shall carry out the duties of his office as prescribed in the Book of Rules of the Student Union Board.
- Section 2. Provision for filling unexpired terms.
1. In the event that the office of ASGFC President becomes vacant for any reason whatsoever, he will be succeeded by his Vice-President.
 2. In the event that the office of Vice President, Secretary, Treasurer, Director of Student Activities, Director of Student Organizations, Director of Student Union Board, or Director of Publicity becomes vacant for any reason whatsoever, the Student Council shall appoint a qualified member of the ASGFC with the approval of the ASGFC.
 3. In the event that the office of Chief Justice shall become vacated for any reason whatsoever, the Senior Justice shall succeed him. The senior class shall elect a new Senior Justice to replace the created vacancy.
 4. In the event that the office of the CRESCENT or L'AMI Editor becomes vacant, the Publications Council shall appoint a new editor with the approval of Student Council and the ASGFC.
- Section 3. Recall
1. The Supreme Court shall have the power to:
 - a. Remove any ASGFC officer who fails to perform his duties as authorized in the By-Laws, or whose cumulative G.P.A. falls below 2.25.
 - b. Remove from office any Student Council member who accumulates during the year three unexcused absences from Student Council meetings.
 2. The Supreme Court shall warn an officer at least once before taking action to remove him from office.
 3. Any recalled or warned officer shall have the right to appeal the decision of the court.
- Section 4. Rules for Election.
1. Eligibility.
 - a. Any member of the ASGFC, who will have completed 60 semester hours by the beginning of the semester following that one in which he will assume office, and whose cumulative GPA is 2.25, shall be eligible for any ASGFC office, except president.
 - b. Any student who meets the requirements of Article III, Section 4, 1a, and is an upper-division student, shall be eligible to hold the office of president.
 2. Nominations.
 - a. Approval of candidates for ASGFC offices shall be made by the Student Council. An election committee appointed by the president, headed by the vice-president, shall plan and execute ASGFC elections.
 - b. Each candidate who meets the requirements of the office must be nominated by petition bearing the signatures of at least 10% of the ASGFC, to be submitted to the election committee at least two weeks prior to the general election.
 3. Elections
 - a. The annual elections of the ASGFC shall be held during the month of April.
 - b. The President shall appoint and head an election board of four graduating seniors to count the ballots.
 - c. Student Council shall decide when and how the election results

- d. The Australian ballot system shall be used.
- e. The primary election for offices for which there are more than two candidates shall be held at least one week prior to the general elections.
- f. The two candidates receiving the highest number of votes in the primary election will participate in the general election.
- g. Candidates receiving a majority of votes in the general election shall be declared elected.

ARTICLE IV

Finance System

Section 1. Central Finance System.

The ASGFC shall maintain a Central Finance System in which the ASGFC and all its organizations shall be depositors and from which all obligations shall be paid by check drawn according to this system.

1. All funds of the ASGFC, L'AMI and THE CRESCENT shall be kept in one account, maintained in a local bank. This account shall be called the ASGFC General Account.
2. All funds of the ASGFC approved organizations shall be kept in one account, maintained in another local bank. This account shall be called the ASGFC Club Account. Exceptions shall be approved by Student Council.
3. Responsibility for financial records.
 - a. The ASGFC Treasurer shall be responsible for the records of the ASGFC General Account.
 - b. The ASGFC Assistant Treasurer shall be responsible for the records of the ASGFC Club Account.
 - c. The L'AMI, THE CRESCENT, and each organization shall be responsible for maintaining their financial records.
4. Receipts.
 - a. Money received by the Treasurer shall be properly recorded and deposited in the ASGFC General Account.
 - b. Money received by the Assistant Treasurer shall be properly recorded and deposited in the ASGFC Club Account.
 - c. Receipts shall be issued for all money received.
5. Disbursements.
 - a. Money shall be drawn from the ASGFC General Account by submitting a warrant signed by two authorized persons to the Treasurer.
 - b. Money shall be drawn from the Club Account by submitting a warrant signed by two authorized persons to the Assistant Treasurer.
6. Transfer of Funds.

Transfer of funds from one account to another shall be made by warrant signed by two authorized persons and approved by the Student Council.
7. Records.
 - a. All ASGFC clubs and organizations shall keep their financial records in uniform books as prescribed by the Student Council and in the place prescribed by the Student Council.
 - b. The treasurer shall keep all bank statements, warrants, and their corresponding checks, and all receipts filed numerically, and an approved journal in the place prescribed by the Student Council.
 - c. A written report shall be submitted for the approval of the Student Council at the first regular meeting each month. A duplicate shall be filed in the place prescribed by the Student Council.
 - d. The Assistant Treasurer shall do as stated in Article IV, Section 7 b and c, of the By-Laws for the accounts for which he is responsible.

Section 2. Budget.

1. An ASGFC budget shall be prepared by the Budget Committee and

approved by the Student Council and the ASGFC before the close of the current school year.

2. The budget shall include funds for socials, THE CRESCENT, L'AMI, May Day, and Homecoming.
3. The budget shall allow \$150 for the office of Editor for both the L'AMI and THE CRESCENT, \$100 for the ASGFC President, \$75 for the Director of Student Activities, and \$50 for the ASGFC Secretary, to be paid at the end of the school year.

ARTICLE V *Student Council*

Section 1.

Student Council shall:

1. Act as the official representative of the ASGFC in all ASGFC affairs.
2. Determine the general policies of the ASGFC in all matters and shall control all ASGFC activities.
3. Approve or disapprove the purpose and function of each existing or new organization under its jurisdiction.
4. Enforce all decisions of the Supreme Court. Be responsible for the installation of ASGFC officers.
5. Ratify all appointed officers.

Section 2. Meetings of the Student Council.

1. Regular meetings shall be held weekly, except when classes are not in session, at a time agreed upon by the members of the Student Council and its advisor.
2. A special meeting of the Student Council may be called by the President upon the notification of all members of the Student Council.
3. Two-thirds of the actual membership of the Student Council shall constitute a quorum.
4. Each meeting is to be opened with prayer.
5. Attendance at Student Council meetings is required of all its members and furthermore decisions concerning absences must be made by the Student Council not later than the meeting following the absence.

Section 3. Voting in the Student Council.

1. Each Student Council member except the President shall have one vote. The President shall vote only in the case of a tie-vote.
2. The Vice Presidents of the respective classes may vote in cases of the excused absence of the Class President.
3. A majority is necessary to decide each vote.

ARTICLE VI

The Student Union Board

Section 1. Members of this board shall be seven students, who are ASGFC members in good standing, including the Chairman of the Board, one Faculty Advisor, and one Administrative Representative.

Section 2. The members of this board shall be selected as follows:

1. The Chairman shall be elected by the Student Body in the spring elections.
2. In the spring:
 - a. The Freshman class shall elect a representative to serve for two years.
 - b. The Sophomore class shall elect a representative to serve for two years.
 - c. The Junior class shall elect a representative to serve for one year.
3. In the fall, the incoming Freshman class shall elect a representative to serve for one year.
4. The Administrative Representative shall be selected by the college administration, and the Faculty Advisor shall be selected by the Student Union Board.
5. Any vacancies in student-elected representatives occurring shall be filled by appointment by the President of the respective classes, with the approval of the class.

Section 3. Officers of the Student Union Board shall be Chairman, Secretary, Business Manager, and Treasurer.

1. The Chairman shall be selected according to the By-Laws, Article III, Section 4.
2. The Secretary, Treasurer, and Business Manager shall be selected by the Student Union Board.

Section 4. Regular meetings of this board shall be held semi-monthly. All members shall be notified at least 24 hours before a special meeting is to be held. Two-thirds of the members must be present at any meeting to constitute a quorum.

Section 5. The Student Union Board shall:

1. Act as the official representative of the ASGFC in all Student Union affairs.
2. Operate on a budget approved by the ASGFC.
3. Administer the policies and rules of the Student Union as adopted by the ASGFC.
4. Be subject to the ASGFC for its policies.

ARTICLE VII

Standing Committees

Section 1. Budget Committee.

1. The Budget committee shall consist of the outgoing President, Vice-President, Treasurer, Director of Student Activities, L'Ami Business Manager, Crescent Business Manager, and the incoming President, Vice-President, Treasurer, Director of Student Activities, L'Ami Editor, Crescent Editor, and Dean of Students.
2. The incoming Treasurer shall be chairman of the committee.

Section 2. Publications Committee.

1. The Publications Committee shall consist of all former and present CRESCENT and L'AMI editors who are currently enrolled at GFC, a student member at large, a professor in business administration, an instructor of journalism and a faculty member at large. The members at large shall be elected each year by the Committee.
2. The Publications Committee shall:
 - a. Elect a student chairman annually.
 - b. Recommend to Student Council the approval or rejection of petitions for the offices of CRESCENT and L'AMI editors.
 - c. Meet once a month to discuss and to act on financial and editorial matters of student publications.
 - d. Assist in the efficient and meaningful publication of the CRESCENT, L'AMI, and Handbook.
 - e. Be responsible to the Student Council for its policies.

Section 3. Club committee

1. The Club Committee shall consist of the Director of Student Organizations as Chairman, ASGFC Vice-President, and the presidents of all ASGFC organizations.
2. The Club Committee shall:
 - a. Meet semi-monthly and at the call of the chairman.
 - b. Coordinate the scheduling of meetings and activities of ASGFC organizations.
 - c. Determine those organizations responsible for sponsoring ASGFC activities.
 - d. Act as a clearing house for information pertaining to organizations.
 - e. Make recommendations to the ASGFC on policy concerning organizations.

Section 4. Culture Committee.

1. The culture committee shall consist of three students chosen by Student Council (at least one of which shall be a member of Student Council), the head of the Fine Arts division, and one other faculty member. The chairman shall be a student chosen by the committee.
2. The culture committee shall:
 - a. Seek to promote cultural interest among students.

- b. Arrange for at least one major cultural event for students each year.
- c. Stimulate and elevate social etiquette.

Section 5. Finance Committee.

1. The finance committee shall consist of the President, Vice-President, Treasurer, Director of Student Activities, and Dean of Students. The Vice President shall be chairman of the Finance Committee.
2. The finance committee shall
 - a. Meet at least once a month to study ASGFC finances.
 - b. Make recommendations to Student Council on matters pertaining to finances of the ASGFC and its organizations.
 - c. Keep Student Council currently informed on ASGFC expenditures in relation to the budget.

Section 6. Social Committee.

1. The Social Committee shall consist of two seniors, four juniors, four sophomores, five freshmen, Director of Student Activities, and the Dean of Students, ex officio. Members shall be appointed by the Director of Student Activities with Student Council approval. The Director of Student Activities shall be the chairman of the Social Committee.
2. The Sophomore, Junior, and Senior representatives shall be appointed by June first for the following academic year. The Freshman representatives shall be appointed in the fall, within three weeks following the opening of school.
3. The duties of the Social Committee shall be:
 - a. Organize monthly parties, after-game socials, and major events—Homecoming, May Day, All School Outing, etc.
 - b. Keep permanent files of each activity.
 - c. Serve as an evaluator of each activity.

ARTICLE VIII

Supreme Court

Section 1. Duties and Purposes of the Supreme Court.

1. The Supreme Court shall be responsible for the proper functioning of the Constitution, By-Laws, and Standing Rules of the ASGFC.
2. The Supreme Court shall hear and render decisions on appeals.
3. The decisions of the Supreme Court shall be binding for all matters under the jurisdiction of the ASGFC.
4. The Supreme Court shall meet monthly to review the constitutionality of all student activities and decisions.

Section 2. Court Recorder (appointed by the Supreme Court) shall:

1. Publish notices of Supreme Court cases at least three days prior to convening.
2. Record the minutes of the Supreme Court.
3. Publish all rulings.

Section 3. Court Attorney (appointed by the Supreme Court) shall:

1. Represent the position of the Supreme Court on appeals of decisions of the Supreme Court.
2. Initiate cases.

Section 4. Appeals.

1. Appeals to the Supreme Court may be made by an individual or group on decisions of the Student Council or the constitutionality of any ASGFC activity.
2. A written appeal shall be given the Chief Justice by any person who signs the appeal.
3. The court shall convene within ten days after receiving an appeal.

Section 5. Court procedure will be as stipulated in a book of rules compiled by the Supreme Court.

ARTICLE IX

Amendments and Waivers to the By-Laws

Section 1. Provisions for amending the By-Laws.

1. The By-Laws may be amended in the following manner only. The proposed amendment must be signed by at least seven members of the ASGFC and must be submitted to the Student Council in writing by one of the signers.
2. The action of the Student Council on submitted amendments shall be one of the following:
 - a. Submit to the ASGFC with recommendation for adoption.
 - b. Submit to the ASGFC with no recommendation.
 - c. Submit to the ASGFC with recommendation for defeat.
3. The Student Council shall submit all proposed amendments to the ASGFC for adoption or rejection. Proposed amendments must be submitted to the ASGFC at the first meeting following Student Council's consideration.
4. Proposed amendments become effective immediately upon adoption.
5. Adoption shall require a 2/3 vote of the ASGFC members present.

Section 2. Provisions for waiving the By-Laws.

1. If for any reason Student Council or an individual deems it necessary to waive the By-Laws for a period of time, said party shall present a resolution in Student Body meeting stating which part of the By-Laws is to be waived, when the waiver is to become effective and when it shall expire.
2. A 2/3 vote shall carry the resolution.

ARTICLE X

Adoption and Execution

Section 1. This Constitution, By-Laws, and Standing Rules shall be placed before the ASGFC within two weeks after being passed by the Student Council. It must pass both the Student Council and the ASGFC by a 2/3 vote. This must be at least a majority of the members of each of these groups.

Section 2. Upon adoption of this Constitution, By-Laws, and Standing Rules, all ASGFC members shall be governed by this Constitution, By-Laws, and Standing Rules.

Section 3. Upon the adoption of this Constitution, By-Laws, and Standing Rules, all previous Constitutions and By-Laws are declared to be null and void.

ARTICLE XI

Intramurals

Section 1. Intramural Director

1. An Intramural Director shall be chosen by June 1 as follows:
 - a. Written applications shall be submitted to Student Council.
 - b. Student Council shall recommend one applicant for ASGFC approval.
2. The Intramural Director shall schedule events, organize teams, and administer the program.

Section 2. An Intramural Committee shall:

1. Consist of the Intramural Director, chairman; Gold Q President; Foxmen President; one men's and one women's PE assistant; and one representative per team. Faculty representatives from Men's and Women's PE Departments shall act as advisors.
2. Assist the Intramural Director in administering the program. The Intramural Committee shall have legislative powers subject to Student Council.
3. Operate on a budget approved by Student Council.

ASGFC STANDING RULES

I

APPOINTMENTS

- A. Appointed assistants to the Student Council.
 - 1. Each year an assistant Treasurer shall be appointed.
 - 2. Other officers may appoint assistants as the need may arise.
- B. Method of appointing assistants.
 - 1. The elected officer shall recommend to the Student Council the name of the assistant they may need.
 - 2. A two-thirds vote of the Student Council is required to ratify these appointments.
 - 3. Appointment of the Assistant Treasurer shall be ratified before the close of the year in which the Treasurer is elected.
- C. Duties of the appointed Assistants.
 - 1. The Assistant Treasurer shall:
 - a. Maintain a commercial account in a Newberg Bank.
 - b. Maintain a journal of the ASGFC Club Account.
 - c. Issue receipts for all funds received and make bank deposits within one week after receiving them.
 - d. Submit a financial report to the Student Council monthly. This shall include a listing of all receipts and expenditures together with an itemized balance.
 - e. Receive and file warrants and issue all ASGFC Club Account checks.
 - f. Perform all duties as specified under the Finance System, Article IV of the By-Laws.
 - 2. Other appointed assistants shall carry out the instructions of the officer they assist.

II

STUDENT BODY OFFICERS

- A. Installation.
 - 1. The Student Council shall be responsible for the installation of officers.
 - 2. Installation shall occur during the first ASGFC chapel after May Day.
- B. Awards.
 - 1. President's award: A small gold shield with gavel attached shall be presented to the ASGFC President.
 - 2. Officer's awards: A gold shield with the inscription GF shall be awarded to the Vice President, Secretary, Treasurer, Director of Student Activities, Director of Student Organizations, Director of Publicity, CRES-CENT Editor, L'AMI Editor, Chairman of the Student Union Board, and Chief Justice of the ASGFC.
 - 3. Awards shall be ordered by the Secretary of the ASGFC.

III

YELL SQUAD

- A. Yell Squad.
 - 1. The Yell Squad shall consist of five members.
 - 2. Tryouts and election for the following year's Yell Squad shall be held not later than May 20.
 - 3. All candidates must try out in an ASGFC chapel individually and in teams.
 - 4. Elections shall take place the same day as tryouts.
 - 5. Each candidate shall be voted upon individually by secret ballot.
 - 6. The five candidates receiving the most votes shall be declared elected.
 - 7. A later election shall determine which of the elected yell squad shall be Yell King or Queen.

8. Every member shall:

- a. Attend all league games and other games recommended by the Budget Committee and approved by Student Council in the spring of the previous year.
 - b. Be present at the designated playing area in time to organize the yelling section and lead at least one yell before the start of the game.
 - c. Be present in the yelling section during the actual playing periods.
 - d. Indicate sufficient interest and school loyalty in leading yells and promoting school spirit.
 - e. Exercise control over the yelling section in encouraging a sportsmanlike attitude compatible with Christian standards.
 - f. Be responsible for organizing and promoting a pep rally sometime during the day preceding or the day of the scheduled game.
- 9. The Yell Squad shall be allotted a specified amount apiece each year by the Student Body. In addition, \$25.00 shall be allotted each year for accessories which shall be the property of the Student Body.
 - 10. Any Yell Squad Member may be recalled for failure to comply with Article III, A-8 of the Standing Rules.
 - 11. In case of a vacancy on the Yell Squad, the Yell King or Queen and the Student Council shall decide the course of action to be taken. If the position of King or Queen is vacated, Student Council shall elect another King or Queen from the remaining members of the Yell Squad.
 - 12. Yell Squad members shall receive emblems provided by the ASGFC upon satisfactory completion of their duties. A bar shall be added to their emblem in place of subsequent awards.

IV

ACTIVITIES

- A. ASGFC Socials.

An ASGFC Social shall be held each month. These shall include a Student Mixer shortly after the beginning of the Fall term, a Christmas Formal, Valentine Formal, and Birthday Banquet.
- B. Homecoming.
 - 1. Homecoming shall be held the first Saturday in November in honor of the alumni.
 - 2. The Director of Student Activities in cooperation with the Alumni shall be responsible for breakfast, morning program, football game, a one-act play contest, and other special events.
 - 3. A Homecoming Queen shall be elected as follows:
 - a. An unmarried woman maintaining the established scholastic requirements shall be eligible.
 - b. Each class shall nominate a candidate from its class.
 - c. The ASGFC shall nominate one candidate.
 - d. The Homecoming Court shall be composed of the five candidates who will select their male escorts.
 - e. Voting shall be by secret ballot by all members of the ASGFC.
 - f. The candidate receiving a plurality of votes shall be declared elected.
 - g. Announcement of the Homecoming Queen shall be at the discretion of the Homecoming program chairman.
- C. Valentine Formal.
 - 1. The Queen of Hearts shall be selected as follows:
 - a. Any unmarried woman from the Freshman or Sophomore class maintaining the established scholastic requirements shall be eligible.
 - b. The Freshmen and Juniors shall each nominate a candidate from the Freshman class.
 - c. The Sophomores and Seniors shall each nominate a candidate from the Sophomore class.

- d. Voting shall be by secret ballot by the men of the ASGFC.
- e. The candidate receiving a plurality of votes shall be declared elected.
- f. Announcement of the Queen of Hearts shall be made at the time of the Coronation.
- 2. The King of Hearts shall be selected as follows:
 - a. Any unmarried man from the Freshman or Sophomore classes maintaining the established scholastic requirements shall be eligible.
 - b. The Freshmen and Juniors shall each nominate a candidate from the Freshman class.
 - c. The Sophomores and Seniors shall each nominate a candidate from the Sophomore class.
 - d. Voting shall be by secret ballot by the women of the ASGFC.
 - e. The candidate receiving a plurality of votes shall be declared elected.
 - f. Announcement of the King of Hearts shall be made at the time of the Coronation.
- D. May Day
 - 1. May Day shall be held the first Saturday of May.
 - 2. The Director of Student Activities shall be responsible for the breakfast, morning program, winding of the May Pole and coronation, baseball game, evening program, and other special events with special recognition of high school seniors.
 - 3. A May Queen shall be elected as follows:
 - a. Any unmarried woman of the Junior and Senior classes maintaining the established scholastic requirements shall be eligible.
 - b. The Juniors and Freshmen shall each nominate a candidate from the Junior class.
 - c. The Seniors and Sophomores shall each nominate a candidate from the Senior class.
 - d. Voting shall be by secret ballot by all members of the ASGFC.
 - e. The candidate receiving a plurality of votes shall be declared elected.
 - f. Announcement of the May Queen shall be at least four weeks before May Day.
 - 4. The Prince Consort shall be elected as follows:
 - a. Any unmarried man of the Junior and Senior classes maintaining the established scholastic requirements shall be eligible.
 - b. The Juniors and Freshmen shall each nominate a candidate from the Junior class.
 - c. The Seniors and Sophomores shall each nominate a candidate from the Senior class.
 - d. Voting shall be by secret ballot by all members of the ASGFC.
 - e. The candidate receiving a plurality of votes shall be declared elected.
 - f. Announcement of Prince Consort shall be at least four weeks before May Day.
 - 5. The May Queen and the Prince Consort shall choose a court of four couples from eligible members of the Senior and Junior classes.
- E. A student may receive only one of the honors mentioned above in a year, and may receive the honor only once during the time he or she is in college.

V RECORD SYSTEM

- A. Central Record System.
 - 1. The ASGFC shall maintain a Central Record System in which the ASGFC and all its organizations shall keep all minutes and official records.

- 2. All ASGFC organizations shall use a uniform record book as prescribed by the Student Council.
- 3. All ASGFC organizations shall keep their records at the end of the school year in the place specified by the Student Council and during the school year shall be entrusted in the hands of the officers.
- B. Records of Publications.
 - 1. The CRESCENT shall keep three copies of each edition of THE CRESCENT in the place specified by the Student Council.
 - 2. The L'AMI shall keep three copies of each edition of the L'AMI in the place specified by the Student Council.
- C. All ASGFC elected and appointed officers shall submit a written report of their year's activities to the Student Council at the close of their term of office to be filed in the place specified by the Student Council.

VI BRUIN JUNIOR

- A. 1. Bruin Junior Activities shall consist of inter-class competitive events.
- 2. Bruin Junior shall be placed in a showcase with hats for each class to indicate possession.
- 3. A Bruin Junior Committee shall be composed of the Director of Student Activities and an elected representative from each class.
- 4. The Committee shall select two activities per term such as water sports and novel events such as pole climbing, raft races, bicycle races, and obstacle courses, etc. subject to Student Council approval.
- 5. The Committee shall announce the events within one week after the beginning of each term. The announcement shall include rules, dates, and other details and shall be placed on the Student Body Bulletin Board.
- 6. The winning class of each event shall be allowed to place their hat on Bruin Junior until the next event.
- 7. Violators who steal the bear or hats or violate the rules in other ways shall forfeit the right of their class to participate in the next event. The Supreme Court shall have final jurisdiction concerning violations.

- ## VII AMENDMENTS AND WAIVERS OF THE STANDING RULES
- A. Amendments and waivers of the Standing Rules shall require a 2/3 vote in any ASGFC meeting.

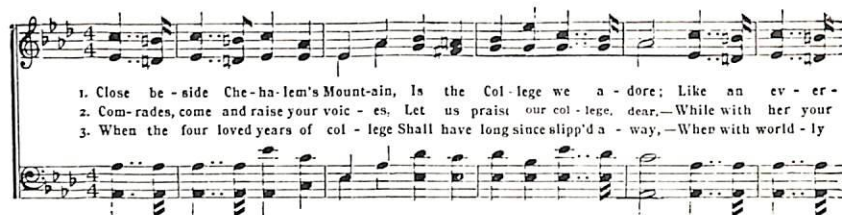
VIII FINANCES

- A. Funds of Graduating Classes.
 - 1. The class funds of any graduating class shall remain in the ASGFC Club Account.
 - 2. The graduating class shall continue to have access to its funds following graduation according to Article IV of the ASGFC By-Laws.
 - 3. If the class fails to spend its funds and is not actively involved in completing a class authorized project prior to the beginning of the second school year following their graduation, Student Council shall transfer the funds to the senior class at the beginning of that school year.
 - 4. This money shall be designated for the senior class project.
- B. Defunct Organization Funds.
 - 1. The funds of any ASGFC organization which has been declared non-existent shall remain in the ASGFC Club Account until the end of the school year during which the organization was declared non-existent.
 - 2. If the organization again becomes authorized under the ASGFC during this time (as stated in Article VIII, Section B, No. 1), it shall retain its former club account.
 - 3. If the organization is not reactivated and authorized under the ASGFC during this time (as stated in Art. VIII, Sec. B., No. 1), Student Council shall deposit the club funds in the ASGFC General Account.

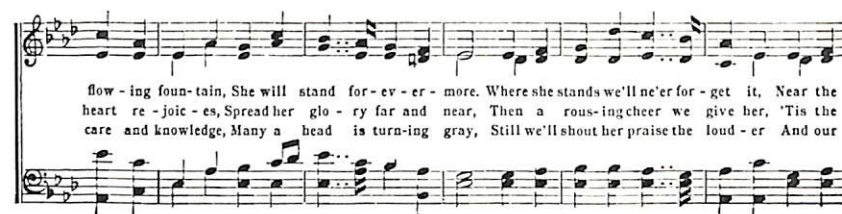
George Fox College

Words by { J. RAY PEMBERTON,
CECIL J. HOSKINS.

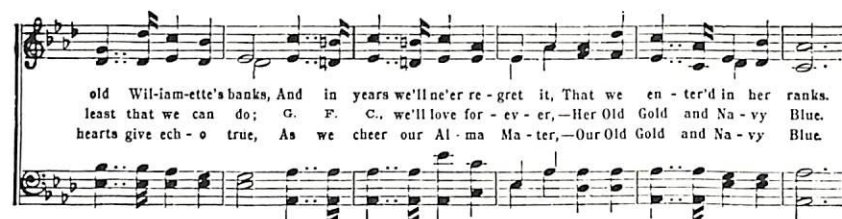
Music by CLIFFORD WHITE KANTNER



1. Close be-side Che-ha-lem's Mount-ain, Is the Col-lege we a-dore; Like an ev-er-
2. Com-rades, come and raise your voic-es. Let us prais't our col-lege, dear.—While with her your
3. When the four loved years of col-lege Shall have long since slipp'd a-way,—When with world-ly



flow-ing foun-tain, She will stand for-ev-er-more. Where she stands we'll ne'er for-get it, Near the
heart re-joic-es, Spread her glo-ry far and near, Then a rous-ing cheer we give her, 'Tis the
care and knowledge, Many a head is turn-ing gray, Still we'll shout her praise the loud-er And our



old Wil-liam-ette's banks, And in years we'll ne'er re-gret it, That we en-ter'd in her ranks.
least that we can do; G. F. C., we'll love for-ev-er,—Her Old Gold and Na-vy Blue.
hearts give ech-o true, As we cheer our Al-ma Ma-ter,—Our Old Gold and Na-vy Blue.

Animato.

* CHORUS.



'Tis the good old Quak-er Col-lege, And we'll shout her wor-thy name!

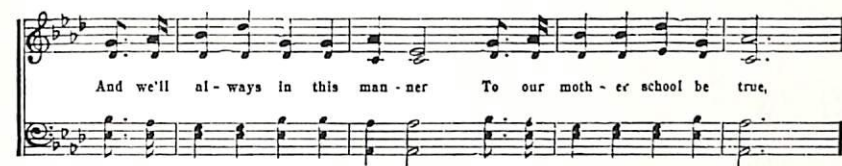


Copyright, 1904, by Pacific College, now George Fox College, Newberg, Oregon

GEORGE FOX COLLEGE—Concluded.



Where we gained our store of knowl-edge, In her halls of hon-or's fame.

And we'll al-ways in this man-ner To our moth-er school be true,




'Neath The George Fox Col-lege ban-ner Of Old Gold and Na-vy Blue.



A rousing effect can be obtained in the chorus by having all voices sing the melody.