

1971

Student Handbook, 1971-1972

George Fox University Archives

Follow this and additional works at: https://digitalcommons.georgefox.edu/student_handbooks

Recommended Citation

George Fox University Archives, "Student Handbook, 1971-1972" (1971). *Student Handbooks*. 10.
https://digitalcommons.georgefox.edu/student_handbooks/10

This Book is brought to you for free and open access by the Archives and Museum at Digital Commons @ George Fox University. It has been accepted for inclusion in Student Handbooks by an authorized administrator of Digital Commons @ George Fox University. For more information, please contact arolfe@georgefox.edu.



GEORGE FOX COLLEGE STUDENT HANDBOOK 1971-72

Student Handbook

1971-72

Published by the Student Council
in cooperation with the Administration

GEORGE FOX COLLEGE
Newberg, Oregon



Introduction

This handbook contains basic guidelines for academic regulations and extra-curricular activities at George Fox College. Its purpose is to provide for the student a reference, and it has been designed to be kept in your notebook for your convenience.

Exercising your choice not to read the handbook does not excuse you from the regulations and requirements contained herein. Keep these things in mind and look forward to a great year at George Fox College.

The Administration



DR. DAVID LE SHANA
President
Ext. 221



DR. ARTHUR ROBERTS
Dean of Faculty
Ext. 234



MR. HAROLD ANKENY
Dean of Student Affairs
Ext. 257



MR. FRANK COLE
Dean of Administration
Ext. 225



MR. MAURICE CHANDLER
Director of Development
Ext. 255

General Information

COLLEGE OFFICES

The main administrative building is Wood-Mar Hall. Office hours are 8 a.m. to 5 p.m., Monday through Friday. Students can save time and effort by making appointments before coming to the administrative offices for business.

The records office, supervised by the registrar, serves as the guardian of the academic standards and achievements of the institution. Complete academic records for each student are stored in this office and are kept confidential.

Incoming transcripts are evaluated in this office. Transcripts of work completed at George Fox College are made available through the records office. Also, all registration materials are processed through this office. Students wishing to change their registration, withdraw from courses, or apply for an incomplete in a course must originate the request in the records office.

STUDENT UNION BUILDING

A student's social life is an important part of the total educational process. In addition to the residence halls, a spacious and modern Student Union Building (SUB) furnishes the George Fox College student with recreational facilities and a television lounge. This student-operated facility is supervised by the SUB board, elected by members of each academic class. The SUB is the location for the Junior Store—operated by the Junior class—which serves sandwiches, soft drinks, and ice cream. A modern bookstore, located in this building, is where student texts, study materials, and other items of specific student needs are found.

The offices of the Associated Student Body are in the SUB. These include the president's office, an office for the director of activities, an office for the director of publicity, and *L'Ami* (yearbook) and *The Crescent* (newspaper) offices and workrooms. One unique room is set aside as a prayer room for students desiring a place for meditation and prayer.

Specific rules for the conduct of students using the SUB are posted each year. Generally, the rules governing respect for the rights of others and the use of property also pertain to the SUB. The Student Affairs Committee is responsible for hearing complaints regarding student conduct in the SUB.

TELEPHONE SERVICE

Students are allowed to make local off-campus calls between 5-11 p.m. weeknights and all day Saturday and Sunday through the switchboard. No calls are placed for students during business hours (8-5) except to a doctor or in case of an emergency.

Students are not to place calls between dorms after 11:30 p.m. weeknights and 12:30 a.m. weekends.

To place off-campus calls, dial 0, tell the operator your extension and the number you want. Hang up your phone and wait for her to call you back.

All floor telephone disorders should be reported to the college switchboard.

BOOK STORE

George Fox is equipped with a student bookstore. The store provides not only textbooks but personal necessities. "Bruin" clothing, paper necessities, and spiritual guidebooks are a few of the things one will find there. Store hours are from 9 a.m. to 5 p.m. Monday through Friday. The Book Store is closed on Saturdays and Sundays except on special occasions. Book Store, ext. 264.

WHERE TO GO FOR INFORMATION

Change of Schedule	Registrar
Student Loans	Director of Financial Aid
Part-time Employment	Director of Financial Aid
Advisor Change	Counseling Center
Scholarship Information	Director of Financial Aid
Spiritual Counseling	Chaplain
Book Store	Student Union Building
Withdrawal from Classes	Registrar
Withdrawal from School	Registrar
College Catalog	Wood-Mar Post Office
Bulletin Boards-Bulletin	Student Director of Publicity
Lost and Found	Student Mailroom (SUB)
Signs and Posters	Student Director of Publicity
Master Calendar	Dean of Student Affairs
Student Calendar	Student Activities Director
College Transcript	Registrar
Automobile Registration	Business Office
Room Change	Dean of Student Affairs
Package Mailed	Wood-Mar Post Office
Stamps	Wood-Mar Post Office
Medical Attention	Pennington Infirmary
Meals	Heacock Commons
TV	Lower Student Union Lounge
Housing	Dean of Student Affairs

LIBRARY SERVICE

Shambaugh Library is a modern building housing more than 37,000 volumes. The librarians are willing to discuss with each student the location of books, fines, specific regulations about borrowing, and other questions regarding the services provided by the library. Library hours are:

Monday	7:50 a.m. to 10:00 p.m.
Tuesday	7:50 a.m. to 10:00 p.m.
Wednesday	7:50 a.m. to 9:00 p.m. (Collegiate Challenge)
Thursday	7:50 a.m. to 10:00 p.m.
Friday	7:50 a.m. to 5:00 p.m.
Saturday	9:00 a.m. to 4:00 p.m.
Sunday	CLOSED
Library, Ext. 252	

ILLNESS: ON-CAMPUS STUDENTS

When a student believes he is too ill to attend classes, he should follow this procedure. He should get up and go to breakfast, if at all possible. Following breakfast, stop and see the nurse. The hours are

posted on the bulletin board in the infirmary located in Pennington Hall. The nurse will help the student make the decision regarding the health procedure best suited for him. Excuses from classes will be given only after consultation with the nurse. If the nurse is unavailable, the student should see the head resident. The nurse, head residents, or the dean of student affairs are the only people who can give excused absences because of illness. Excuse slips must be signed by one of the above-named persons if the student wishes to make up work missed because of illness. The same procedure used in cocurricular absences is used for illness.

ILLNESS: OFF-CAMPUS STUDENTS

When a student living off campus believes he is too ill to attend classes, and desires to make up work that may be missed, he should have his mother (or wife, husband, roommate, whichever one applies in his case) call the office of the dean of student affairs and inform him before the absence occurs. He then should stop by the office later for the excuse slip and follow the same procedure listed for on-campus students.

NURSE’S HOURS

The nurse is in her office Monday-Friday from 8:30 a.m. to noon. In case of an emergency, contact your head resident who can, if the need is justified, contact the nurse. Infirmary, ext. 266.

REGISTRATION

Registration for freshmen and upper division transfer students is normally held a few days before returning GFC students validate their spring term preregistra-

tion. Each student is assigned to an advisor, who assists his advisee in scheduling and academic planning. A complete guide to registration is issued upon arrival on campus. Any late admission to classes because of registration changes made after the close of the first week of classes must be by petition to the Academic Affairs Committee, consent of the professor involved, and payment of a \$3 fee.

HOW TO WITHDRAW

- 1. *Withdrawal from class.* A student who wishes to withdraw from a course must secure a change-of-course form from the registrar’s office and have it approved by the advisor, the instructor involved, the registrar, and the bursar. If a course is dropped without permission, the student will receive an “F” grade. Cost is \$2.
- 2. *Withdrawal from college.* A student should realize that discontinuance of attendance does not constitute a withdrawal. He is required to inform the registrar of his intention to withdraw from the college and to fill out the withdrawal forms furnished by the office. Unless this is done, the student may forfeit his right to a clear transcript of credits and honorable dismissal. This refers to withdrawal from college during a term, not at the end of a term.
- 3. *Return after withdrawal.* A student who returns to college after an interruption of less than two years may continue on to graduation under the same requirements as though his program had not been interrupted. A student returning after an interruption of two years or more must meet any new or revised requirements that have been placed in effect since his original enrollment.

A Philosophy of Discipline

Wherever people are gathered together as a closely knit group, such as at a college, certain regulations are necessary to govern their relations. The city and community and state must have certain laws for successful government. Successful family life is dependent upon rules being observed. Without some guiding processes of group living to direct the conduct and activity of the individual, the group suffers and is seriously thwarted in its attempt to achieve its objectives. The result of no government is anarchy and chaos.

Dr. Milo Ross, past president of George Fox College, has said, “We make a distinction between God’s law and man’s laws in our structure of regulation at George Fox College. We treat with far greater seriousness those laws of God that are clearly expressed in the Scriptures.”

These laws mentioned by Dr. Ross are supplemented with minimum essential rules to enable the students to live together in a Christian community with maximum personal freedom. However, with increased freedom comes increased personal responsibility. When students do not achieve the expectation of the college, as outlined in the catalog and this handbook, the college feels a responsibility to assist them to be aware of the nature of their action and the imbalance in achieving

the educational goals if improper conduct is allowed to continue. Too often students regard control as punitive. Discipline is primarily designed to help students achieve to the level of their ability and the expectations of the college and community.

The college is committed to a Christo-centric approach to student honor and regulation. Jesus Christ entered history to release man from the awful crush of legalism and to show the true plan of achieving righteousness—not with fences but with the operation of God’s grace within. The objective of discipline is not merely conformity but student maturity, resulting in responsible and constructive behavior.

STUDENT RESPONSIBILITY

In signing the application for admission, the student agrees to be governed by the college and its standards as outlined in this handbook. Each student is responsible for knowing its contents and for abiding by its standards, whether he is a full- or part-time student and whether he is living on or off campus, as long as he is enrolled as a student. This signature on the application is binding until such time as his student status is terminated.

SIGNIFICANT MORAL STANDARDS OF THE COLLEGE

- Outlined in this section of the handbook are certain standards that carry significant moral responsibility. Since its beginning, those who have carried the responsibility of George Fox College have agreed that its purpose could not be fulfilled, nor the best interests of the students served, without placing a ban on the following:
- 1. *Use or possession of alcoholic beverages.* The use of alcohol as a beverage has become a major threat to our nation. For instance, it is a prime factor in over 50 percent of all auto accidents. The increasing incidence of alcoholism resulting in the precipitation of other fatal diseases focuses dead center on one of the primary moral problems of the nation. A state law prohibits the use, possession, or sale of alcoholic beverages to minors. In addition, the Scriptures plainly teach that drunkenness is in no way connected to the Christian life. Therefore, the use or possession of alcoholic beverages or attendance at a social occasion that has its express purpose the consumption of alcohol is sufficient cause for immediate dismissal.
 - 2. *The use of drugs, except those prescribed by a medical doctor, is illegal.* No use of them, including experimentation or possession, can be permitted. Students guilty of the above actions will immediately be dismissed from college.
 - 3. *Immoral sexual behavior, including deviant behavior, is not permitted.* The New Testament is unequivocal in its demand that sexual relations be confined to marriage. Current trends of increased premissiveness do not change the Christian position in the least. The college cannot consistently hold to this position if it creates or permits situations that increase the temptations to engage in illicit sexual relations. That is why George Fox College does not permit intervisitation between men’s and women’s rooms and has closing hours to prevent all-night activities.
 - There remains much for the student to control since the college cannot and chooses not to chaperone couples when dating. Self-control on dates and showing affection in public will reflect the good taste and chastity expected of Christians. Should a student’s conduct continually violate these norms, he may be asked to withdraw from the college.
 - 4. *The use or possession of tobacco is strictly prohibited.* The scientific evidence that cigarette smoking is a killer is overwhelming. Any educational institution dedicated to the pursuit of truth, wherever it may lead, is obligated to warn youth of the dangers of smoking. No smoking is allowed on campus by any students of the college, or at college events away from the campus. Any student addicted to nicotine and who cannot refrain from using it while enrolled as a student of the college may be dismissed if he persists in the habit, whether at home or during vacation periods.
 - 5. *Gambling is a serious moral problem.* Compulsive gamblers leave in their wake a series of heartbreaks in broken homes and poverty-stricken spouses and children. In addition, the moral problem of “getting something for nothing” is a serious threat to the happiness and worth of an individual. One’s gain from another’s loss is a sophisticated form of stealing—a practice expressly forbidden in Scripture. Students

- face serious disciplinary action if found guilty of gambling.
- 6. *Social dancing, although accepted by some Christians, is nevertheless still disapproved by the church that owns the college.* The traditional opposition to the dance arose from experience over several generations, during which the church found that social dancing became associated with various kinds of immorality. The church judged the social dance to be an unworthy activity for dedicated Christians in their stewardship of time and, also, a poor type of social experience. The implementation of the purposes of the college will be more firmly established if the members of the college community refrain from participating in the social dance. Students who insist on attending social events where dancing occurs are subject to discipline by the dean of student affairs.
 - 7. *The use and possession of obscene literature and pictures and the use of profane or obscene language are sufficient causes for discipline.* If a student continues to participate in this behavior after counseling by the dean of student affairs, disciplinary recommendations to the appropriate committee will be given by the dean of student affairs.
- ADMINISTRATION OF DISCIPLINE
- Discipline will be administered in such a way as not to undermine a student’s self-respect. When a student enrolls in the college, he is expected to adhere to the regulations as delineated in the handbook. To that extent, he is responsible and is subject to the actions of those charged with the authority to administer discipline. The Student Affairs Committee is responsible for administering discipline through the dean of student affairs. The Student Affairs Committee has disciplinary jurisdiction up to termination of student enrollment. The Student Affairs Committee may recommend to the Administrative Council action regarding termination of a student’s relationship to the college. No record of student discipline will be kept on file beyond graduation of the student or when his student status is permanently terminated. The only exception to this action is when discipline carries with it a certain academic penalty. The dean of faculty, in consultation with the student involved, will assist the student in how best to explain the poor work appearing on his transcript.
- THE ADMINISTRATIVE COUNCIL
- The Administrative Council is charged with operating the college under broad guidelines set by the Board of Trustees. Membership of this committee consists of the president of the college, who acts as chairman, a faculty representative, the director of development, and the deans of administration, faculty, and student affairs.
- They serve as the highest board of appeal in student affairs and normally act on any discipline involving termination of student status.
- The president of the ASGFC meets with the council once each month.
- TYPES OF DISCIPLINE
- The following are types of discipline that may be used by the dean of student affairs or by committees

who may have jurisdiction:

1. *Warning:* Notice to the student that continuation or repetition of specified conduct may be cause for further disciplinary action.

2. *Disciplinary Probation:* Exclusion from participation in privileges or cocurricular or extracurricular activities as set forth in the notice of disciplinary probation for a specified period of time.

3. *Restitution:* Reimbursement for damage to or misappropriation of property. Reimbursement may take the form of service to repair or otherwise pay for damages.

4. *Interim Suspension:* Exclusion from classes and other privileges or activities as set forth in the notice of interim suspension, pending final determination of alleged violation.

5. *Suspension:* Exclusion from classes and other privileges or activities as set forth in the notice of suspension for a definite period of time.

6. *Dismissal:* Termination of student status for an indefinite period. The student may be readmitted to the college only by writing a letter of petition to the Administrative Council and agreeing to specific restrictions that the council may require.

7. *Expulsion:* Permanent termination of student status without possibility of readmission to the college.

DUE PROCESS AT GEORGE FOX

Discipline at the college does not disregard attention to the student's right to be heard. The student will be informed of the charges brought against him. He has the right to bring witnesses on his behalf at any time during any of the hearings before any of the committees to which he may be asked to appear.

It is recognized that grievances have every right to be heard, and procedures have been inaugurated to hear these grievances through the committees mentioned above. Practices that infringe upon or block the normal progress of education will not be tolerated. Every effort will be made to avoid any confrontations that may result from student grievances. Students who refuse to use these channels of communication and methods for changing procedures will be subject to immediate dismissal and possible expulsion.

Due process is meant to safeguard rights, but a "courtroom" approach and an insistence on a keeping of the "letter of the law" is an attitude not in keeping with the philosophy and stated objectives of the college.

Personal Expectations

APPROPRIATE DRESS AND APPEARANCE

Students are asked to avoid extremes in appearance. This is not to thwart individuality but to continue a level of responsibility and philosophy that the college has held throughout its history.

During the college year, students find themselves in a variety of situations that require a decision on what is proper attire. Simplicity is the keynote, with a broad principle of what is well-accepted guiding the appearance of each student. Good grooming requires cleanliness, neatness, and modesty, as well as an attainment of certain refinement associated with collegiate life.

APPROPRIATE SOCIAL CONDUCT

While it is recognized that permissiveness is a part of the general culture of today, the college feels that inappropriate public display of affection is incompatible

with the intellectual aims of the institution. The normal display of casual relationships between the sexes is recognized as a perfectly acceptable standard of conduct. Students who insist on conduct beyond that which is proper will receive counseling from the dean of student affairs.

MARRIAGE DURING THE ACADEMIC YEAR

When students marry, the financial burdens often require one or both of them to drop out of college. Students should make themselves available to the counseling services provided by the dean of student affairs or college chaplain. Students who wish to marry during enrollment in college should make arrangements with the dean of student affairs at least two months before the marriage date. This regulation should be observed even if the marriage is to take place between terms. The summer vacation period does not apply in this request for notification of plans.

New Policies

The Student Affairs Committee reserves the right to develop and institute new policies that are not stated in the handbook. When a proposed policy is approved, it becomes effective immediately unless otherwise specified. This same procedure applies to policy changes as stated in this handbook.

Students are expected to observe national, state, and local laws designed for the proper functioning of society. Respect for the rights and privileges of others is to be constantly remembered. Hazing, theft, and insubordination to those in authority will bring swift and firm discipline.

SUNDAY	MONDAY	TUESDAY	WEDNESDAY	THURSDAY	FRIDAY	SATURDAY
SEPTEMBER 1971			1	2	3	4
5	6	7	8	9	10	11
12	13	14	15	16 Faculty Preschool Conference - - -	17	18
19	20 Resident Assistant Workshop - - -	21	22 Dorms Open to New Students - 2 p.m. New Student Orientation - - - - -	23	24 Upperclassmen Return	25 Registration for Returning Students - - - - - All-Comers Cross-Country Meet (here)
26 New Student Orientation	27 Classes Begin	28	29	30		
SUNDAY	MONDAY	TUESDAY	WEDNESDAY	THURSDAY	FRIDAY	SATURDAY
OCTOBER 1971					1 Convocation	2 Portland Track Club Cross-Country (here)
3	4	5	6	7	8 Last Day to Register or Add Classes	9 Whidby Island Invitational Cross-Country (there)
10	11	12	13 Victor Borge - Civic Auditorium	14	15 Sacramento Cross-Country (there)	16 U. of Nevada Cross-Country (there) Raft Race
17	18	19	20	21	22	23 All School Retreat - - - -
24 All School Retreat Christian Emphasis Week - - - - -	25	26	27	28	29 Christian Emphasis Week - - - - -	30 Halloween Party Portland State Cross-Country (there)
31 The Fifth Dimension - Memorial Coliseum						

SUNDAY	MONDAY	TUESDAY	WEDNESDAY	THURSDAY	FRIDAY	SATURDAY
	1 Denver Symphony Orchestra - Civic Auditorium	2	3	4	5 National Custom Auto Show - Multnomah Co. Expo Center	6 GFC All-Comers Cross-Country (here) Wayne Newton - Civic Auditorium
7 National Custom Auto Show - Multnomah Co. Expo Center Wayne Newton - Civic Auditorium	8	9	10	11 Faculty Seminar	12	13 Future Freshman Day
14	15	16	17	18 GFC Music Theater (Division 2)	19 NCWSA Field Hockey - (Delta Park) Student Conference on Peace GFC Music Theater (Division 2)	20 NAIA National Cross-Country Championship
21 Student Conference on Peace	22 Registration for Winter Quarter	23	24 Thanksgiving Break	25	26	27
28 Thanksgiving Break	29 Classes Resume	30				

NOVEMBER 1971

SUNDAY	MONDAY	TUESDAY	WEDNESDAY	THURSDAY	FRIDAY	SATURDAY
DECEMBER 1971			1	2	3 Christmas Formal NCWSA Volleyball - (U of O) Semiannual Meeting Board of Trustees Basketball - Whitman (there)	4 Oratorio Rehearsal Pacific Invitational Wrestling (there)
5 Oratorio - Newberg Friends Church	6	7	8	9 Music Recital	10 Music Recital Carol Sing Last Day to Drop Classes Basketball: Western Baptist (here)	11 Wrestling: Warner Pacific (here) Basketball: Alaska Methodist (here)
12	13 Basketball: Alaska Methodist (here)	14 Final Exams	15	16 Dorms Close	17 Christmas Vacation	18 Basketball: EOC (here)
19	20 Basketball: Azusa Pacific (here)	21 Basketball: Pacific University Tournament	22 Christmas Vacation	23	24	25
26	27	28 Basketball: Linfield (here)	29 Christmas Vacation	30 Basketball: Linfield (there)	31	

SUNDAY	MONDAY	TUESDAY	WEDNESDAY	THURSDAY	FRIDAY	SATURDAY
JANUARY 1972						1 Christmas Vacation

2 Christmas Vacation Dorms Open	3 New Student Registration Basketball: Western Montana (here)	4 Classes Begin	5	6	7	8 Basketball: OTI (there)
9	10 Basketball: SOC (there)	11	12	13	14 Last Day to Register or Add Classes	15 Basketball: Lewis and Clark State (here)
16 Missionary Conference	17	18	19	20	21 Basketball: Warner Pacific (there)	22
23	24	25 Basketball: EOC (here)	26	27 Faculty Recital	28 Roaring Twenties Party	29
30	31					

SUNDAY	MONDAY	TUESDAY	WEDNESDAY	THURSDAY	FRIDAY	SATURDAY
		1	2 Basketball: Lewis and Clark State (there)	3 Faculty Seminar	4 Basketball: NNC (there)	5 Irish Rovers - Civic Auditorium
6	7	8 Basketball: Western Baptist (there)	9	10	11 Wrestling: Warner Pacific (there) Drama	12 Homecoming Basketball: Warner Pacific (here)
13	14	15	16	17 Band Tour	18	19
20 Band Tour	21 Basketball: College of Great Falls (here)	22	23	24	25 Basketball: NNC (here)	26
27	28	29 Registration for Spring Quarter				

FEBRUARY 1972

SUNDAY	MONDAY	TUESDAY	WEDNESDAY	THURSDAY	FRIDAY	SATURDAY
MARCH 1972			1 Registration for Spring Quarter	2 Music Recital	3 NCWSA Basketball - (U of O) Basketball: NAIA District II Playoffs	4
5 Registration for Spring Quarter	6	7	8	9 Music Recital	10 Last Day to Drop Classes	11 Spring Formal
12	13	14 Final Exams	15	16 Dorms Close	17 Spring Break - Baseball: Lewis and Clark Choir Tour	18
19 Spring Break Choir Tour	20 Disneyland Dinner	21	22	23	24 Spring Break - Choir Tour - NEF Conference	25
26 Spring Break Choir Tour NEF Conference Dorms Open Choir Concert	27 New Student Registration	28 Classes Begin	29	30	31 Good Friday Chapel	

SUNDAY	MONDAY	TUESDAY	WEDNESDAY	THURSDAY	FRIDAY	SATURDAY
APRIL 1972						1
2	3 Careers Conference	4	5	6	7 Last Day to Register or Add Classes	8 Hugo Winterhalter - Civic Auditorium
9 Christian Emphasis Week	10	11	12	13 Music Recital	14 Forensics: NW Christian College	15
16	17	18	19	20 Music Recital	21	22 Junior - Senior Banquet
23	24	25	26	27	28 NCIC Women's Track (here)	29
30 Women's Auxiliary Fine Arts Week						

SUNDAY	MONDAY	TUESDAY	WEDNESDAY	THURSDAY	FRIDAY	SATURDAY
	1 Women's Auxiliary Fine Arts Week	2 Fine Arts Week	3	4	5 May Day Weekend	6
7 Women's Auxiliary Fine Arts Week	8	9	10	11 Music Recital	12	13
14	15 Registration for Fall Term	16 Music Recital	17	18 NCWSA Tennis (U of O) Annual Faculty Lecture	19	20 ASGFC Spring Outing
21 Registration for Fall Term	22	23	24	25 Music Recitals	26	27
28	29	30	31 Senior Investiture	MAY 1972		

SUNDAY	MONDAY	TUESDAY	WEDNESDAY	THURSDAY	FRIDAY	SATURDAY
JUNE 1972				1	2 Last Day to Drop Classes Commencement Weekend	3 Alumni Day
4 Commencement Weekend Baccalaureate and Commencement	5	6 Final Exams	7	8 Dorms Close	9	10
11	12	13	14	15	16	17
18	19	20	21	22	23	24
25	26	27	28	29	30	

TRAVELER'S DIGEST

AIRLINES			
Braniff	224-5030	Pan American	227-6671
Continental	224-4560	United	226-7211
Eastern	224-7550	Hughes Airwest	224-5252
NorthwestOrient	226-3211	Western	228-5771
Pacific Air Lines	228-7071		

RAILROAD			
Great Northern	223-7273	Union Pacific	227-6471
Northern Pacific	227-0415	Union Station	227-3421
Southern Pacific	226-7601		

BUSES			
Continental Trailways			228-8571
Dunthorpe Motor Transport			285-9845
Gray Line Sightseeing Co.			226-6991
Greyhound		Portland	228-5171
		*Newberg	538-3913
Tri-Met (Portland)			233-3511
Trailways			228-8571
Vancouver-Portland			285-8210
*Greyhound Bus schedule may be obtained at Newberg Music, 712 E. 1st St., Newberg.			

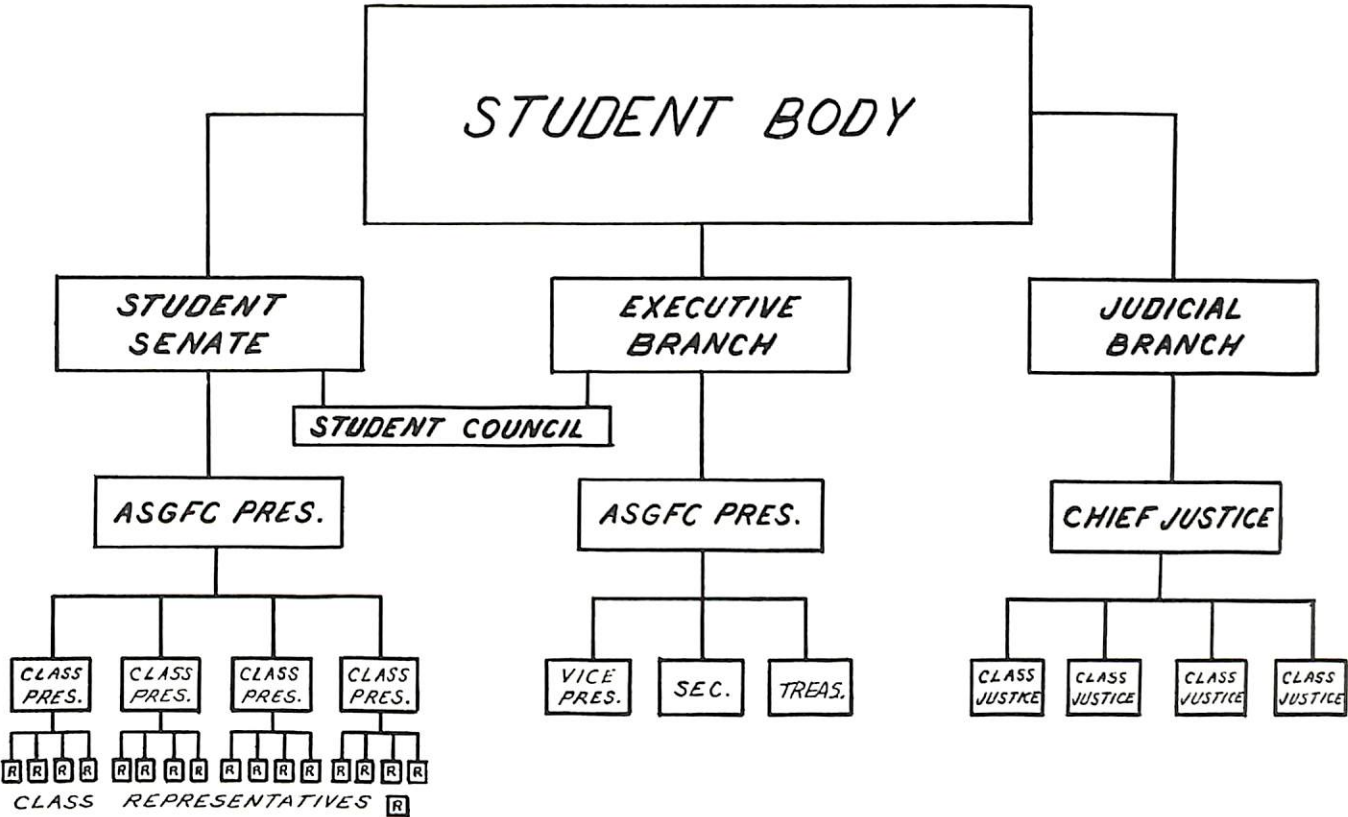
NOTE: For assistance in obtaining rides between GFC and depots, contact Dean of Student Affairs Harold Ankeny at extension 257 or at his home 538-3494. All telephone numbers with prefixes other than 538- are non-local calls and long distance charges will be involved.

POINTS OF INTEREST

IN NEWBERG:
Bald Peak State Park
Champoeg Park
Chehalem Mountain
Hoover Park
Minthorne House
Chehalem Public Pool
Camp Tillicum

IN PORTLAND:
Art Museum
S.W. Park Ave. and Madison
Battleship Oregon Monument
S.W. Harbor Dr.
Portland Civic Auditorium
1520 S.W. 3rd Ave.
International Rose Test Gardens
400 S.W. Kingston
Japanese Gardens
Washington Park
Lloyd Center
Memorial Coliseum
1401 N. Wheeler Ave.
Mount Tabor (extinct volcano)
Portland Civic Stadium
1844 S.W. Morrison
Oregon Museum of Science and Industry
4015 S.W. Canyon Rd.
Pittock Mansion
3229 N.W. Monte Vista Terrace
Portland International Airport
Rhododendron Test Gardens
Sanctuary of Our Sorrowful Mother
N.E. Sandy Blvd. & 85th Ave.
Washington Park
100 S.W. Wright
Portland Zoo
4001 S.W. Canyon Road

Guide to Student Government



This structural diagram is designed to give the new student an idea of the organization of student government at George Fox College. As a democratic organization, students have referendum power on all business acted upon by their leaders and representatives.

The Student Senate acts as a representative body to conduct most of the business of the Associated Students of George Fox College (ASGFC). The Executive Branch carries out that legislation passed by the Student Senate and handles the routine business encountered by the ASGFC. The Supreme Court is the check on the business procedure of the ASGFC to see that it complies with the student constitution. In the three branches, then, the constituency goes back to the classes and the student body.

—Stan Morse, ASGFC President

ASGFC OFFICERS

President	Stan Morse
Vice-president	Dale Hadley
Secretary	Sharon Dunlap
Treasurer	Kathy Haisch
Director of Activities	Marilyn May and Patt Martin
SUB Board Chairman	Carol Wright
Director of Publicity	Debbie Wilson
Chief Justice	David Sargent
Publications Editors	
<i>The Crescent</i>	Charles Howard
<i>L'Ami</i>	Roxie Calvert and Linden Bright

CLUBS

FORMATION OF A CLUB:

Any group of students having a common interest such as a special subject interest, vocation, or hobby, may petition for official recognition if they have open membership. The procedure for organizing is as follows:

A constitution and preliminary bylaws must be filed in the student body office for approval of Student Council, which in turn will refer it to the Senate for final approval.

CIRCLE K:

This is a service organization for college men on campus and is similar to Kiwanis (the sponsoring organization) and other service organizations. For membership information, contact President David Sargent.

GOLD Q:

This club consists of girls who have won one or more letters in college sports. The club endeavors to further all athletic activities and foster student enthusiasm. Contact President Roxie Calvert for more information.

INTERNATIONAL CLUB:

This club promotes social fellowship and understanding between American and foreign students attending George Fox. One of the purposes is to confront students with the possibilities of missionary service

and to promote a person-to-person program of Christian service. Contact President Tatuli Mbasu, 538-2939.

KAPPA TAU:

This club is designed to create a spirit of friendliness and friendship among women students; to help co-eds derive the best from college; to provide leadership opportunities; to encourage worthwhile activities, and to upgrade women's standards. Women wanting to be actively involved should contact Diana McCaslin.

LETTERMAN'S CLUB:

The club's purpose is to bring together all lettermen in order to have a voice in student affairs; to cooperate with the ASGFC; to sponsor activities and handle all athletic or athletes' grievances. For membership regulations, contact President Keith Merritt, 538-5258.

STUDENT CHRISTIAN UNION:

The Student Christian Union is a campus organization that provides students with the opportunity to involve themselves in several different areas of service and evangelism. It periodically sponsors assemblies and is responsible for the weekly Collegiate Challenge meetings. For membership, contact Chaplain Ron Crecelius, ext. 231.

MUSIC EDUCATORS NATIONAL CONFERENCE (Student Chapter):

This club connects students in music education to the professional organization. The club sponsors speakers on new developments in the music education field. For further information contact Dennis Hagen, ext. 238.

STUDENT OREGON EDUCATION ASSOCIATION:

This club seeks to prepare prospective teachers for education leadership. The club sponsors various projects and meetings with special educational emphasis. Contact advisor Dr. David Myton for membership, ext. 247.

PUBLICATIONS

THE CRESCENT

The student newspaper is published triweekly throughout the school year, carrying student, campus, and administrative news for students. Supported by student body funds and advertising of local merchants, *The Crescent* is published by the Publications Board, which annually appoints an editor approved by the Senate. Those interested in joining the staff should contact Editor Charlie Howard, ext. 265.

L'AMI

The student yearbook is published annually with delivery in the fall. It is edited by a student appointed by the ASGFC Publications Board acting as publisher. Highlights of the school year, individual pictures, and academic achievements are covered in each volume. Persons interested in helping with the annual should contact coeditors Roxie Calvert and Linden Bright, ext. 269.

PUBLICATIONS BOARD

This governing body is composed of four class representatives, yearbook and newspaper editors and business managers, the student director of publicity, the

college director of information, and representatives from the office of the president, the English department and student affairs office, and the publication's business advisor.

BULLETIN

The student Bulletin is printed twice each week (Tuesday and Friday) and contains general announcements and news of the campus for administrators and students. Material to be submitted for the Bulletin should be given to the student publicity director. It must be submitted in written form and turned in two days prior to the issue in which it is to be run. Contact Editor Debbie Wilson, ext. 250 or box 212.

SCHEDULING OF EVENTS

All social functions on or off campus must be scheduled on the master calendar in the student affairs office. Contact Dean Harold Ankeny, ext. 257.

BULLETIN BOARDS

All material to be put on bulletin boards must be cleared through the student publicity director. Contact Debbie Wilson, ext. 250.

ASGFC TRADITIONS

CAMPUS TRADITIONS:

- 1. Bruin Junior ("BJ")—a symbol of class supremacy to be fought for whenever "flashed."
- 2. Victory Bell—to be used at athletic events and by the seniors as part of their homecoming float.

SENIOR PRIVILEGES:

- 1. Only seniors may pick flowers.
- 2. Applause in chapel is to originate with the seniors.
- 3. Seniors have first choice in the election of a faculty advisor; then juniors, sophomores, and freshmen.
- 4. Seniors are permitted a "sneak" day under the guidance of the advisor.

JUNIOR PRIVILEGES:

- 1. Juniors are responsible for all money concessions. Any fund-raising projects must have junior class approval.
- 2. Juniors decorate for baccalaureate and commencement and designate one man and one woman from their class to lead the procession on these two occasions.
- 3. Juniors sponsor the Junior-Senior Banquet.
- 4. Ten percent of all money raised by other classes and organizations is to be given to the Junior Class.

