

1972

Student Handbook, 1972-1973

George Fox University Archives

Follow this and additional works at: https://digitalcommons.georgefox.edu/student_handbooks

Recommended Citation

George Fox University Archives, "Student Handbook, 1972-1973" (1972). *Student Handbooks*. 8.
https://digitalcommons.georgefox.edu/student_handbooks/8

This Book is brought to you for free and open access by the Archives and Museum at Digital Commons @ George Fox University. It has been accepted for inclusion in Student Handbooks by an authorized administrator of Digital Commons @ George Fox University. For more information, please contact arolfe@georgefox.edu.

**GEORGE
FOX
COLLEGE
STUDENT
HANDBOOK
1972-73**



Student Handbook

1972-73

Published by the Student Council
in cooperation with the Administration

GEORGE FOX COLLEGE
Newberg, Oregon



Introduction

This handbook contains basic guidelines for academic regulations and extra-curricular activities at George Fox College. Its purpose is to provide for the student a reference, and it has been designed to be kept in your notebook for your convenience.

Exercising your choice not to read the handbook does not excuse you from the regulations and requirements contained herein. Keep these things in mind and look forward to a great year at George Fox College.

The Administration



DR. DAVID C. Le SHANA
President
Ext. 221



DR. WILLIAM D. GREEN
Dean of the College
Ext. 234



MR. DONALD J. MILLAGE
Business Manager
Ext. 225



MR. HAROLD A. ANKENY
Dean of Student Affairs
Ext. 257



MR. MAURICE CHANDLER
Director of Development
Ext. 255



MR. FRANK L. COLE
Assistant to the President for Institutional Research Ext. 216



MR. HARVEY CAMPBELL
Registrar
Ext. 222



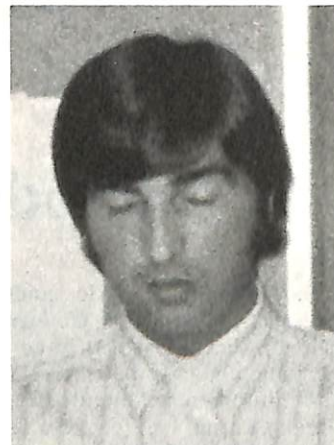
MR. RON CRECELIUS
Chaplain
Ext. 231



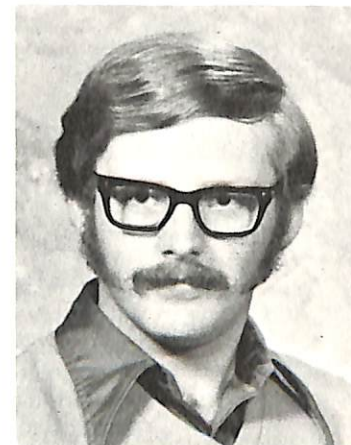
MR. ALLEN HADLEY
Director of Admissions
Ext. 259



MR. M. GENE HOCKETT
Director of Alumni and Church Relations Ext. 218



MR. BARRY HUBBELL
Director of College Relations
Ext. 217



MR. RON RITTENHOUSE
Admissions Counselor
Ext. 259

General Information

THE COLLEGE'S HISTORY AND TRADITIONS

George Fox College is a Quaker liberal arts college, which has maintained through the more than 80 years of its history the highest standards of Christian principles of living. The statement of faith printed below reflects the beliefs of Northwest Yearly Meeting of Friends Church with churches located throughout the Northwest and in Bolivia and Peru.

A Statement of Faith

George Fox College is sponsored and governed by Northwest Yearly Meeting of Friends Church, which has historically emphasized the necessity of a genuinely experiential religious faith; the inward, spiritual nature of the ordinances; the importance of peacemaking and responsible social action; and the freedom for individuals to exercise liberty of conscience. With many other Christians, we firmly believe the great, historic truths of Christianity, including the deity of our Lord Jesus Christ; the authority and inspiration of the Holy Scriptures; the necessity of salvation for sinful man; and the present ministry of the Holy Spirit, by whose indwelling the Christian is enabled to live a godly life.

George Fox College respects the personal convictions of each student and invites students of all races and creeds to participate in its educational programs.

Each student is encouraged to establish a time for daily Bible reading and prayer. Through this practice, the Holy Spirit will be released to assist in the total commitment of the life of the student to his task—his education.

One of the unique aspects of a small community like Newberg is the friendly atmosphere of its churches. Students will find opportunity for real Christian service in the ministry of the Sunday school, youth, and music programs of these churches. The pastor of the Newberg Friends Church is the college pastor. He is most willing to counsel with students concerning spiritual and emotional needs, as are the other pastors of the area. Attendance at worship services should be consistently maintained.

The college chaplain also serves as a primary counselor for the spiritual and emotional needs of students. He is responsible for the chapel-assembly program, religious emphasis weeks, and missionary conferences, and represents the college in churches, service clubs, and other organizations throughout the Northwest. He works closely with the Student Christian Union in conducting the weekly student prayer service on Wednesday evenings, as well as in other functions of outreach and training. Careful consideration is given to those students chosen to represent the college through deputation and public relations programs.

The student's social life is an important aspect of the educational experience at George Fox College. Student fees provide for the appearance on campus of several outstanding artists throughout the year. To assist in the cultural education of the student, opportunity is provided for participation in cultural events scheduled in the greater Portland area. In line with the emphasis

on maintaining the highest planes of Christian living, attendance or participation in programs inconsistent with Christian principles is seriously discouraged.

The sense of "community" that is found in a small college such as George Fox College is found in few other places. Throughout this handbook, information will be given that will be helpful to each student in his orientation.

CHAPEL-ASSEMBLY

One of the areas where community is especially affected is the chapel-assembly period held two days each week. These meetings together serve three purposes: 1) a social purpose, for a meeting such as this is the only way to consider matters of common concern, 2) an intellectual purpose, for in this fashion are issues raised for the thoughtful consideration of thinking students and faculty, and, 3) a devotional purpose, for it is in such meetings, as well as special weeks of Christian emphases, that the community can worship together and consider the various aspects of faith and life.

Chapel-Assembly is held two days per week on Monday and Wednesday, 11 a.m.

Chapel is required of all students enrolled in 10 or more hours. Upon entering the auditorium, a slip will be given to each student upon which he writes his name and then returns to the chapel monitor at the end of the period. Freshmen are allowed four unexcused cuts per term, sophomores five, juniors six, and senior students seven before the penalty goes into effect. The penalty reads as follows:

"Any student incurring the allotted unexcused absences in attendance at chapel-assembly during a term will receive a warning. He will be suspended from classes the calendar week following two more unexcused absences regardless of the period of the term. During this suspension, no class attendance or cocurricular activities will be permitted. Cocurricular activities are defined as: drama, choir, band, athletics, positions in student government, club offices, and intercollegiate debate."

The student affairs office is responsible for monitoring chapel attendance. Exemption forms and chapel-excuse forms are available in this office.

COLLEGE OFFICES

The main administrative building is Wood-Mar Hall. Office hours are 8 a.m. to 5 p.m., Monday through Friday. Students can save time and effort by making appointments before coming to the administrative offices for business.

The records office, supervised by the registrar, serves as the guardian of the academic standards and achievements of the institution. Complete academic records for each student are stored in this office and are kept confidential.

Incoming transcripts are evaluated in this office. Transcripts of work completed at George Fox College are made available through the records office. Also, all registration materials are processed through this office.

Students wishing to change their registration, withdraw from courses, or apply for an incomplete in a course must originate the request in the records office.

STUDENT UNION BUILDING

A student's social life is an important part of the total educational process. In addition to the residence halls, a spacious and modern Student Union Building (SUB) furnishes the George Fox College student with recreational facilities and a television lounge. This student-operated facility is supervised by the SUB board, elected by members of each academic class. The SUB is the location for the Junior Store—operated by the Junior class—which serves sandwiches, soft drinks, and ice cream. A modern bookstore, located in this building, is where student texts, study materials, and other items of specific student needs are found.

The offices of the Associated Student Body are in the SUB. These include the president's office, an office for the director of activities, an office for the director of publicity, and for *L'Ami* (yearbook) and *The Crescent* (newspaper). One unique room is set aside as a prayer room for students desiring a place for meditation and prayer.

Specific rules for the conduct of students using the SUB are posted each year. Generally, the rules governing respect for the rights of others and the use of property also pertain to the SUB. The Student Affairs Committee is responsible for hearing complaints regarding student conduct in the SUB.

TELEPHONE SERVICE

Students are allowed to make local off-campus calls between 5-11 p.m. weeknights and all day Saturday and Sunday through the switchboard. No calls are placed for students during business hours (8-5) except to a doctor or in case of an emergency.

Students are not to place calls between dorms after 11:30 p.m. weeknights and 12:30 a.m. weekends.

To place off-campus calls, dial 0, tell the operator your extension and the number you want. Hang up your phone and wait for her to call you back.

All floor telephone disorders should be reported to the college switchboard.

BOOK STORE

George Fox is equipped with a student bookstore. The store provides not only textbooks but personal necessities. "Bruin" clothing, paper necessities, and spiritual guidebooks are a few of the things one will find there. Store hours are from 9 a.m. to 5 p.m. Monday through Friday. The Book Store is closed on Saturdays and Sundays except on special occasions. Book Store, ext. 264.

WHERE TO GO FOR INFORMATION

Change of Schedule	Registrar
Student Loans	Student Affairs Office
Part-time Employment	Student Affairs Office
Advisor Change	Counseling Center
Scholarship Information	Student Affairs Office

Spiritual Counseling	Chaplain
Book Store	Student Union Building
Withdrawal from Classes	Registrar
Withdrawal from School	Registrar
College Catalog	Wood-Mar Post Office
Bulletin Boards-Bulletin	Student Director of Publicity
Lost and Found	Student Mailroom (SUB)
Signs and Posters	Student Director of Publicity
Master Calendar	Student Affairs Office
Student Calendar	Student Activities Director
College Transcript	Registrar
Automobile Registration	Business Office
Room Change	Dean of Student Affairs
Package Mailed	Wood-Mar Post Office
Stamps	Wood-Mar Post Office
Medical Attention	Pennington Infirmary
Meals	Heacock Commons
TV	Lower Student Union Lounge
Housing	Student Affairs Office

LIBRARY SERVICE

Shambaugh Library is a modern building housing more than 37,000 volumes. The librarians are willing to discuss with each student the location of books, fines, specific regulations about borrowing, and other questions regarding the services provided by the library. Library hours are:

Monday	7:50 a.m. to 10:00 p.m.
Tuesday	7:50 a.m. to 10:00 p.m.
Wednesday	7:50 a.m. to 9:00 p.m. (Collegiate Challenge)
Thursday	7:50 a.m. to 10:00 p.m.
Friday	7:50 a.m. to 5:00 p.m.
Saturday	9:00 a.m. to 4:00 p.m.
Sunday	CLOSED

Library, Ext. 252

ILLNESS: ON-CAMPUS STUDENTS

When a student believes he is too ill to attend classes, he should follow this procedure. He should get up and go to breakfast, if at all possible. Following breakfast, stop and see the nurse. The hours are posted on the bulletin board in the infirmary located in Pennington Hall. The nurse will help the student make the decision regarding the health procedure best suited for him. Excuses from classes will be given only after consultation with the nurse. If the nurse is unavailable, the student should see the head resident. The nurse, head residents, or the student affairs office are the only people who can give excused absences because of illness. Excuse slips must be signed by one of the above-named persons if the student wishes to make up work missed because of illness. The same procedure used in cocurricular absences is used for illness.

ILLNESS: OFF-CAMPUS STUDENTS

When a student living off campus believes he is too ill to attend classes, and desires to make up work that may be missed, he should have his mother (or wife, husband, roommate, whichever one applies in his case) call the student affairs office and inform them before the absence occurs. He then should stop by the office later for the excuse slip and follow the same procedure listed for on-campus students.

NURSE'S HOURS

The nurse is in her office Monday-Friday from 8:30 a.m. to noon. In case of an emergency, contact your head resident who can, if the need is justified, contact the nurse. Infirmary, ext. 266.

REGISTRATION

Registration for freshmen and upper division transfer students is normally held a few days before returning GFC students validate their spring term preregistration. Each student is assigned to an advisor, who assists his advisee in scheduling and academic planning. A complete guide to registration is issued upon arrival on campus. Any late admission to classes because of registration changes made after the close of the first week of classes must be approved by advisor and professor involved.

HOW TO WITHDRAW

1. *Withdrawal from class.* A student who wishes to withdraw from a course must secure a change-of-

course form from the registrar's office and have it approved by the advisor, the instructor involved, the registrar, and the bursar. If a course is dropped without permission, the student will receive an "F" grade. Cost is \$2.

2. *Withdrawal from college.* A student should realize that discontinuance of attendance does not constitute a withdrawal. He is required to inform the registrar of his intention to withdraw from the college and to fill out the withdrawal forms furnished by the office. Unless this is done, the student may forfeit his right to a clear transcript of credits and honorable dismissal. This refers to withdrawal from college during a term, not at the end of a term.

3. *Return after withdrawal.* A student who returns to college after an interruption of less than two years may continue on to graduation under the same requirements as though his program had not been interrupted. A student returning after an interruption of two years or more must meet any new or revised requirements that have been placed in effect since his original enrollment.

A Philosophy of Discipline

Wherever people are gathered together as a closely knit group, such as at a college, certain regulations are necessary to govern their relations. The city and community and state must have certain laws for successful government. Successful family life is dependent upon rules being observed. Without some guiding processes of group living to direct the conduct and activity of the individual, the group suffers and is seriously thwarted in its attempt to achieve its objectives. The result of no government is anarchy and chaos.

Dr. Milo Ross, past president of George Fox College, has said, "We make a distinction between God's law and man's laws in our structure of regulation at George Fox College. We treat with far greater seriousness those laws of God that are clearly expressed in the Scriptures."

These laws mentioned by Dr. Ross are supplemented with minimum essential rules to enable the students to live together in a Christian community with maximum personal freedom. However, with increased freedom comes increased personal responsibility. When students do not achieve the expectation of the college, as outlined in the catalog and this handbook, the college feels a responsibility to assist them to be aware of the nature of their action and the imbalance in achieving the educational goals if improper conduct is allowed to continue. Too often students regard control as punitive. Discipline is primarily designed to help students achieve to the level of their ability and the expectations of the college and community.

The college is committed to a Christo-centric approach to student honor and regulation. Jesus Christ entered history to release man from the awful crush of legalism and to show the true plan of achieving righteousness—not with fences but with the operation of

God's grace within. The objective of discipline is not merely conformity but student maturity, resulting in responsible and constructive behavior.

STUDENT RESPONSIBILITY

In signing the application for admission, the student agrees to be governed by the college and its standards as outlined in this handbook. Each student is responsible for knowing its contents and for abiding by its standards, whether he is a full- or part-time student and whether he is living on or off campus, as long as he is enrolled as a student. This signature on the application is binding until such time as his student status is terminated.

SIGNIFICANT MORAL STANDARDS OF THE COLLEGE

Outlined in this section of the handbook are certain standards that carry significant moral responsibility. Since its beginning, those who have carried the responsibility of George Fox College have agreed that its purpose could not be fulfilled, nor the best interests of the students served, without placing a ban on the following:

1. *Use or possession of alcoholic beverages.* The use of alcohol as a beverage has become a major threat to our nation. For instance, it is a prime factor in over 50 percent of all auto accidents. The increasing incidence of alcoholism resulting in the precipitation of other fatal diseases focuses dead center on one of the primary moral problems of the nation. A state law prohibits the use, possession, or sale of alcoholic beverages to minors. In addition, the Scriptures plainly teach that drunkenness is in no way connected to the

Christian life. Therefore, the use or possession of alcoholic beverages or attendance at a social occasion that has its express purpose the consumption of alcohol is sufficient cause for immediate dismissal.

2. *The use of drugs, except those prescribed by a medical doctor, is illegal.* No use of them, including experimentation or possession, can be permitted. Students guilty of the above actions will immediately be dismissed from college.

3. *Immoral sexual behavior, including deviant behavior, is not permitted.* The New Testament is unequivocal in its demand that sexual relations be confined to marriage. Current trends of increased permissiveness do not change the Christian position in the least. The college cannot consistently hold to this position if it creates or permits situations that increase the temptations to engage in illicit sexual relations. That is why George Fox College does not permit intervisitation between men's and women's rooms and has closing hours to prevent all-night activities.

There remains much for the student to control since the college cannot and chooses not to chaperone couples when dating. Self-control on dates and showing affection in public will reflect the good taste and chastity expected of Christians. Should a student's conduct continually violate these norms, he may be asked to withdraw from the college.

4. *The use or possession of tobacco is strictly prohibited.* The scientific evidence that cigarette smoking is a killer is overwhelming. Any educational institution dedicated to the pursuit of truth, wherever it may lead, is obligated to warn youth of the dangers of smoking. No smoking is allowed on campus by any students of the college, or at college events away from the campus. Any student addicted to nicotine and who cannot refrain from using it while enrolled as a student of the college may be dismissed if he persists in the habit, whether at home or during vacation periods.

5. *Gambling is a serious moral problem.* Compulsive gamblers leave in their wake a series of heartbreaks in broken homes and poverty-stricken spouses and children. In addition, the moral problem of "getting something for nothing" is a serious threat to the happiness and worth of an individual. One's gain from another's loss is a sophisticated form of stealing—a practice expressly forbidden in Scripture. Students face serious disciplinary action if found guilty of gambling.

6. *Social dancing, although accepted by some Christians, is nevertheless still disapproved by the church that owns the college.* The traditional opposition to the dance arose from experience over several generations, during which the church found that social dancing became associated with various kinds of immorality. The church judged the social dance to be an unworthy activity for dedicated Christians in their stewardship of time and, also, a poor type of social experience. The implementation of the purposes of the college will be more firmly established if the members of the college community refrain from participating in the social dance. Students who insist on attending social events where dancing occurs are subject to discipline by the student affairs office.

7. *The use and possession of obscene literature and pictures and the use of profane or obscene language are sufficient causes for discipline.* If a student

continues to participate in this behavior after counseling by the student affairs office, disciplinary recommendations to the appropriate committee will be given by the student affairs office.

ADMINISTRATION OF DISCIPLINE

Discipline will be administered in such a way as not to undermine a student's self-respect. When a student enrolls in the college, he is expected to adhere to the regulations as delineated in the handbook. To that extent, he is responsible and is subject to the actions of those charged with the authority to administer discipline. The Student Affairs Committee is responsible for administering discipline through the student affairs office. The Student Affairs Committee has disciplinary jurisdiction up to termination of student enrollment. The Student Affairs Committee may recommend to the Administrative Council action regarding termination of a student's relationship to the college. No record of student discipline will be kept on file beyond graduation of the student or when his student status is permanently terminated. The only exception to this action is when discipline carries with it a certain academic penalty. The dean of faculty, in consultation with the student involved, will assist the student in how best to explain the poor work appearing on his transcript.

THE ADMINISTRATIVE COUNCIL

The Administrative Council is charged with operating the college under broad guidelines set by the Board of Trustees. Membership of this committee consists of the president of the college, who acts as chairman, a faculty representative, the director of development, and the deans of administration, faculty, and student affairs.

They serve as the highest board of appeal in student affairs and normally act on any discipline involving termination of student status.

The president of the ASGFC meets with the council once each month.

TYPES OF DISCIPLINE

The following are types of discipline that may be used by the student affairs office or by committees who may have jurisdiction:

1. *Warning:* Notice to the student that continuation or repetition of specified conduct may be cause for further disciplinary action.

2. *Disciplinary Probation:* Exclusion from participation in privileges or cocurricular or extracurricular activities as set forth in the notice of disciplinary probation for a specified period of time.

3. *Restitution:* Reimbursement for damage to or misappropriation of property. Reimbursement may take the form of service to repair or otherwise pay for damages.

4. *Interim Suspension:* Exclusion from classes and other privileges or activities as set forth in the notice of interim suspension, pending final determination of alleged violation.

5. *Suspension:* Exclusion from classes and other privileges or activities as set forth in the notice of suspension for a definite period of time.

6. *Dismissal:* Termination of student status for an indefinite period. The student may be readmitted to the college only by writing a letter of petition to the Administrative Council and agreeing to specific restrictions that the council may require.

7. *Expulsion:* Permanent termination of student status without possibility of readmission to the college.

DUE PROCESS AT GEORGE FOX

Discipline at the college does not disregard attention to the student's right to be heard. The student will be informed of the charges brought against him. He has the right to bring witnesses on his behalf at any

time during any of the hearings before any of the committees to which he may be asked to appear.

It is recognized that grievances have every right to be heard, and procedures have been inaugurated to hear these grievances through the committees mentioned above. Practices that infringe upon or block the normal progress of education will not be tolerated. Every effort will be made to avoid any confrontations that may result from student grievances. Students who refuse to use these channels of communication and methods for changing procedures will be subject to immediate dismissal and possible expulsion.

Due process is meant to safeguard rights, but a "courtroom" approach and an insistence on a keeping of the "letter of the law" is an attitude not in keeping with the philosophy and stated objectives of the college.

Personal Expectations

APPROPRIATE DRESS AND APPEARANCE

Students are asked to avoid extremes in appearance. This is not to thwart individuality but to continue a level of responsibility and philosophy that the college has held throughout its history.

During the college year, students find themselves in a variety of situations that require a decision on what is proper attire. Simplicity is the keynote, with a broad principle of what is well-accepted guiding the appearance of each student. Good grooming requires cleanliness, neatness, and modesty, as well as an attainment of certain refinement associated with collegiate life.

APPROPRIATE SOCIAL CONDUCT

While it is recognized that permissiveness is a part of the general culture of today, the college feels that inappropriate public display of affection is incompatible

with the intellectual aims of the institution. The normal display of casual relationships between the sexes is recognized as a perfectly acceptable standard of conduct. Students who insist on conduct beyond that which is proper will receive counseling from the student affairs office.

MARRIAGE DURING THE ACADEMIC YEAR

When students marry, the financial burdens often require one or both of them to drop out of college. Students should make themselves available to the counseling services provided by the student affairs office or college chaplain. Students who wish to marry during enrollment in college should make arrangements with the student affairs office at least two months before the marriage date. This regulation should be observed even if the marriage is to take place between terms. The summer vacation period does not apply in this request for notification of plans.

New Policies

The Student Affairs Committee reserves the right to develop and institute new policies that are not stated in the handbook. When a proposed policy is approved, it becomes effective immediately unless otherwise specified. This same procedure applies to policy changes as stated in this handbook.

Students are expected to observe national, state, and local laws designed for the proper functioning of society. Respect for the rights and privileges of others is to be constantly remembered. Hazing, theft, and insubordination to those in authority will bring swift and firm discipline.

SEPTEMBER 1972

Sunday	Monday	Tuesday	Wednesday	Thursday	Friday	Saturday
					1	2
3	4 LABOR DAY	5	6	7	8	9
10	11	12	13	14	15	16
17	18	19	20	21 Faculty Preschool Conference Portland Open (Ladies PGA) Golf Tournament	22 Antiques of Tomorrow, Painters, Westminster Pres. Church	23 O. Soc. of China Auto Race (see 24th) Toy Display " "
24 Portland Open (Ladies PGA) Golf Tournament A Children's World (Toy Display), OMSI, thru Oct. 22 - - -	25	26	27 Dorms open to new students 2 p.m. New student orientation Auto Race, 1/8 mi. Drag, Delta Park	28	29 Registration for new students Dorms open to re-turning students 2 pm	30 Registration for returning students Shoe Fair, Mult. Co. Expo Center

OCTOBER 1972

Sunday	Monday	Tuesday	Wednesday	Thursday	Friday	Saturday
1 Heavy Organ, Virgil Fox, Civic Aud. Shoe Fair, Mult. Co. Expo Center A Children's World (Toy Display), OMSI, thru Oct. 22 - - -	2 Classes begin. Late registration and change fee effective	3	4	5	6 Convocation	7
8 The Carpenters, Mem. Coliseum	9 Oregon Symphony Orchestra, All Orchestral Concert, Civic Auditorium, 8:30 pm COLUMBUS DAY	10	11	12 Guy Lombardo and His Royal Canadians, Civic Auditorium	13 Last day to register or add classes Dukla-Ukrainian Dance Company, Civic Auditorium	14 Music department outing Go-Kart Races, Delta Park
15	16	17 The Mandrake-Stage play, Lewis & Clark College, Fir Acres Theater,	18	19 Music Recital, 8 pm	20 Sergiu Luca--Violin Civic Auditorium	21 Idaho Dinner at Nampa Raft Race
22 Christian Emphasis Week	23 Oregon Symphony Orchestra Concert - Jerome Lowenthal, Pianist, Civic Auditorium VETERANS DAY	24	25 Christian Emphasis	26 Obernkirchen Child. Choir, Civic Aud. The Fifth Dimension Memorial Coliseum	27 Choir Retreat Rock Show, OMSI	28 Halloween Party Chrysanthemum Show Rob. Murphy Mem.hall
29 Chrysanthemum Show	30 Here Are Ladies! - Siobhan McKenna, Civic Auditorium	31				

NOVEMBER 1972

Sunday	Monday	Tuesday	Wednesday	Thursday	Friday	Saturday
			1	2	3 Reader's Theater 8 p.m. National Custom Auto Show, Multnomah County Expo Center	4
5 Turkish Whirling Dervishes, Civic Auditorium, 8:00 National Custom Auto Show, Multnomah Co.	6	7	8	9 Music Lecture Recital, 8:00 p.m.	10 Road Rally "Applause" Civic Aud., 8:30 p.m., Matinee Sat. and Sun., 2:30 p.m. Pacific International Livestock Expo. Multnomah County Exposition Center	11 Future Freshman Day
12 "Applause", Civic Auditorium, 8:30 p.m. Pacific International	13 Livestock Exposition, Multnomah County Expo Oregon Symphony Orchestra Concert - Isaac Stern, Violinist, Civic Audit. 8:30 p.m.	14 Faculty Seminar	15	16 Music Theater (Div 2)	17 Music Theater (Div 2) NCWSA Field Hockey - Univ. of Victoria "Carlos Montoya" Flamenco Guitarist, Civic Aud. 8:30 p.m.	18
19 "Carlos Montoya" Flamenco Guitarist,	20	21 Music Recital 8 p.m.	22	23 Thanksgiving Family Festival Portland Auto Show, Memorial Coliseum	24 Classes Resume	25 National Ballet of Washington, D.C. "Sleeping Beauty"
26 Portland Auto Show Memorial Coliseum National Ballet of Washington, D.C. "Cinderella"	27 Winter term registration begins	28	29	30 Basketball NAIA Tip-off Tourney at Linfield against S.O.C.		

DECEMBER 1972

Sunday	Monday	Tuesday	Wednesday	Thursday	Friday	Saturday
					1 Carol Sing Aux. Christmas Bazaar Board of Trustees Meeting Basketball: NAIA Tip-off Tournament, Linfield and Oregon College of Ed. NCWSA Volleyball - Washington State	2
3 Christmas Oratorio 3 p.m. at Newberg Friends Church	4 Oregon Symphony Orchestra Concert Jose Iturbi - Pianist, Civic Auditorium	5	6 Basketball at Willamette 7:30pm	7 Music Recital 8 p.m.	8 Music Recital, 11 a.m. Basketball - Pacific Univ. 7:30 p.m. (here) Artur Rubinstein	9 Christmas Formal Basketball - at Pacific- 7:30 p.m.
10	11	12	13	14	15 Classes end Basketball- Willamette 7:30 - (here)	16 Dorms Close 9 a.m. Christmas Vacation
17 Christmas Vacation	18 Basketball - Eastern Oregon, 7:30 p.m. (here)	19	20	21	22 Basketball - Linfield 7:30 p.m. (here)	23 Basketball - at Linfield 7:30 p.m.
24 31 Christmas Vacation	25	26	27	28	29 Basketball - Whitman 7:30 p.m. (here)	30 Basketball - Whitman 7:30 p.m. (here)

JANUARY 1973

Sunday	Monday	Tuesday	Wednesday	Thursday	Friday	Saturday
	1	2 Dorms open 2 p.m.	3 Classes Begin Registration for new students	4 Basketball - NAIA Tournament at Pasadena, California	5	6
	Christmas Vacation -----					
7	8	9	10	11 Music Recital 8 p.m.	12 Last day to register or add classes Basketball - at University of Victoria 7:30 p.m.	13
14	15 Basketball - at Western Baptist 7:30 p.m.	16 Music Recital 8 p.m.	17	18 Basketball - Oregon Tech, 7:30 p.m. (here) Joffery II Ballet	19	20 Basketball - Southern Oregon 7:30 p.m. (here) Royal Winnipeg Ballet
21 Missions Conference	22	23	24 Missions Conference	25	26	27
28	29	30 Basketball - at Eastern Oregon 7:30 p.m.	31			

FEBRUARY 1973

Sunday	Monday	Tuesday	Wednesday	Thursday	Friday	Saturday
				1 Band Tour	2	3
4 Band Tour	5	6 Music Recital 8 p.m.	7 Sleuth-English Murder Mystery, Civic Aud. 8:30 p.m.	8 Basketball - Lewis and Clark State 7:30 p.m. (here)	9 Rudolf Nureyev with Canadian Nat. Ballet Civ. Aud. 8:15 and Sat. Matinee, 2:30	10 Basketball - Western Baptist 8 p.m. (here) Homecoming
11	12	13 Music Recital 8 p.m.	14	15 Basketball - Oregon Women at Oregon College Drama Production	16 Leslie Caron, Civ. Aud. Doll's House 8:30 p.m.	17 Basketball - Warner Pacific 7:30 p.m. Ferrante & Teicher Civ. Auditorium
18	19	20 Faculty Seminar	21	22 Music Theater Scene Basketball - at Lewis and Clark State, 7:30 p.m.	23 Vienna Choir Boys, Civic Auditorium, 8:15 p.m.	24 Basketball - at Northwest Nazarene 7:30 p.m.
25	26	27 Basketball - Warner Pacific 7:30 p.m. (here)	28 Spring term Registration begins			

MARCH 1973

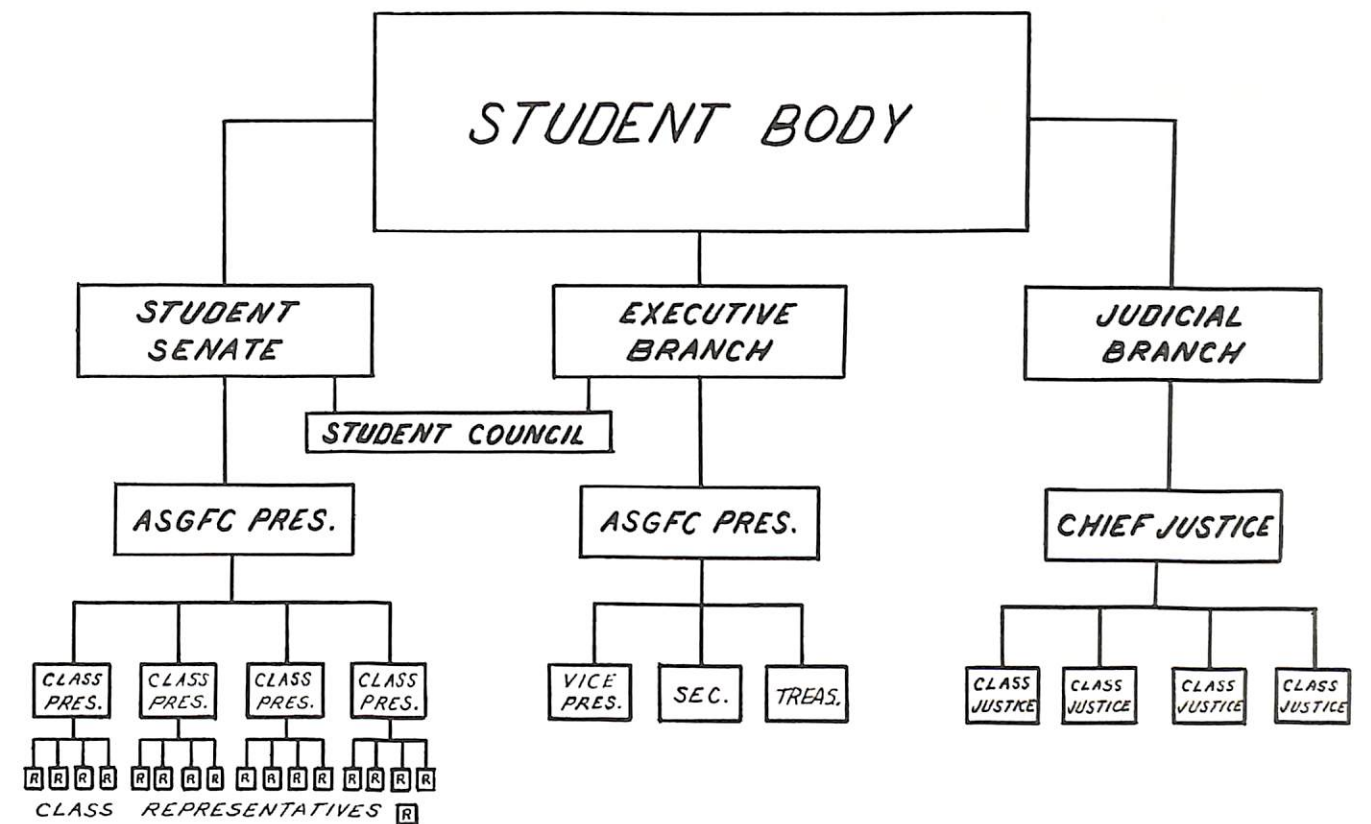
Sunday	Monday	Tuesday	Wednesday	Thursday	Friday	Saturday
				1 Music Recital 8 p.m.	2 Music Recital 11 a.m.	3 Basketball - NAIA District II Play- offs Van Cliburn- Pianist
4	5 Basketball - NAIA District II Playoffs	6	7	8	9 Choir Tour - Classes End	10 Dorms Close 9 a.m. Spring Vacation
11 Choir Tour - Spring Vacation	12	13	14 Choir Tour - Spring Vacation	15 American Ballet Theater - Civic Auditorium	16	17
18 Choir Tour Spring Vacation Dorms Open 2 p.m. American Ballet Theater	19 Classes Begin Registration for new students Southern Cal. dinner at Disneyland	20	21	22 Music Recital 8 p.m. Fred Waring and the Pennsylvanians	23	24
25	26	27 Music Recital 8 p.m.	28	29	30 Last day to register or add classes Invitational Choir Festival 8 p.m. (here)	31

APRIL 1973

Sunday	Monday	Tuesday	Wednesday	Thursday	Friday	Saturday
1 Women's Auxiliary Fine Arts V Festival	2 Rudolf Serkin - Pianist Civic Auditorium	3	4	5	6	7
8 Spring Christian Emphasis	9	10	11	12	13	14 Maurice Bejart and Ballet Civic Auditorium
15	16	17 Music Recital 8 p.m.	18	19 Music Recital 8 p.m.	20 Good Friday Chapel	21 Jr. - Sr. Banquet
22 Easter	23	24	25	26 Music Recital 8 p.m.	27	28 "Jose Greco" Civic Auditorium
29	30					

MAY 1973						
Sunday	Monday	Tuesday	Wednesday	Thursday	Friday	Saturday
		1	2	3	4 Music Theater - - -	5 ASGFC May Day Festival
6	7	8 Annual Faculty Lecture 8 p.m.	9	10	11 Music Theater - - -	12 ASGFC Spring Outing
13 Marcel Marceau Civic Auditorium	14 Fall term registration begins	15	16	17 Music Recital 8 p.m. NCWSA Tennis - Eastern Washington - - -	18 Music Recital 11a.m. Annual Board of Trustees Meeting Commencement Dinner Alumni Dinner Commencement Weekend - - -	19
20 Commencement Weekend Commencement Baccalaureate	21	22	23	24	25 Classes End	26 Dorms Close 9 a.m.
27	28	29	30	31		

Guide to Student Government



This structural diagram is designed to give the new student an idea of the organization of student government at George Fox College. As a democratic organization, students have referendum power on all business acted upon by their leaders and representatives.

The Student Senate acts as a representative body to conduct most of the business of the Associated Students of George Fox College (ASGFC). The Executive Branch carries out that legislation passed by the Student Senate and handles the routine business encountered by the ASGFC. The Supreme Court is the check on the business procedure of the ASGFC to see that it complies with the student constitution. In the three branches, then, the constituency goes back to the classes and the student body.

ASGFC OFFICERS

President
Vice-president
Secretary
Treasurer
Director of Activities
SUB Board Chairman
Director of Publications
Director of Publicity
Chief Justice
Publications Editors
The Crescent
L'Ami

John Macy
Dave Sargent
Suzanne Swaren
Kathy Haisch
Chuck Friesen
Ron Bowden
Charlie Howard
Nancy Lehman
Randy Thornburg

Nancy Gathright

CLUBS

FORMATION OF A CLUB:

Any group of students having a common interest such as a special subject interest, vocation, or hobby, may petition for official recognition if they have open membership. The procedure for organizing is as follows:

A constitution and preliminary bylaws must be filed in the student body office for approval of Student Council, which in turn will refer it to the Senate for final approval.

CIRCLE K:

This is a service organization for college men on campus and is similar to Kiwanis (the sponsoring organization) and other service organizations. For membership information, contact President Dan Hull.

GOLD Q:

This club consists of girls who have won one or more letters in college sports. The club endeavors to further all athletic activities and foster student enthusiasm. Contact Dr. Weesner, advisor, for more information.

INTERNATIONAL CLUB:

This club promotes social fellowship and understanding between American and foreign students attending George Fox. One of the purposes is to confront students with the possibilities of missionary service

and to promote a person-to-person program of Christian service. Contact President John Banda.

KAPPA TAU:

This club is designed to create a spirit of friendliness and friendship among women students; to help co-eds derive the best from college; to provide leadership opportunities; to encourage worthwhile activities, and to upgrade women's standards. Women wanting to be actively involved should contact Terry Palmer.

LETTERMAN'S CLUB:

The club's purpose is to bring together all lettermen in order to have a voice in student affairs; to cooperate with the ASGFC; to sponsor activities and handle all athletic or athletes' grievances. For membership regulations, contact President Keith Merritt, 538-5258.

STUDENT CHRISTIAN UNION:

The Student Christian Union is a campus organization that provides students with the opportunity to involve themselves in several different areas of service and evangelism. It periodically sponsors assemblies and is responsible for the weekly Collegiate Challenge meetings. For membership, contact Chaplain Ron Crecelius, ext. 231.

MUSIC EDUCATORS NATIONAL CONFERENCE (Student Chapter):

This club connects students in music education to the professional organization. The club sponsors speakers on new developments in the music education field. For further information contact Dennis Hagen, ext. 238.

STUDENT OREGON EDUCATION ASSOCIATION:

This club seeks to prepare prospective teachers for education leadership. The club sponsors various projects and meetings with special educational emphasis. Contact advisor Dr. David Myton for membership, ext. 247.

PUBLICATIONS

THE CRESCENT

The student newspaper is published triweekly throughout the school year, carrying student, campus, and administrative news for students. Supported by student body funds and advertising of local merchants, *The Crescent* is published by the Publications Board, which annually appoints an editor approved by the Senate. Those interested in joining the staff should contact Editor Nancy Gathright, ext. 265.

L'AMI

The student yearbook is published annually with delivery in the fall. It is edited by a student appointed by the ASGFC Publications Board acting as publisher. Highlights of the school year, individual pictures, and academic achievements are covered in each volume. Persons interested in helping with the annual should contact director of publications, Charlie Howard.

PUBLICATION BOARD

This governing body is composed of six members chosen by the chairman, who is the seventh member on the board. The members may include students, faculty, and administrative personnel.

BULLETIN

The student Bulletin is printed twice each week (Tuesday and Friday) and contains general announcements and news of the campus for administrators and students. Material to be submitted for the Bulletin should be given to the student publicity director. It must be submitted in written form and turned in two days prior to the issue in which it is to be run. Contact Director of Publicity Nancy Lehman, ext. 250 or box 212.

SCHEDULING OF EVENTS

All social functions on or off campus must be scheduled on the master calendar in the student affairs office. Contact the student affairs office, ext. 237.

BULLETIN BOARDS

All material to be put on bulletin boards must be cleared through the student publicity director. Contact Nancy Lehman, ext. 250.

ASGFC TRADITIONS

CAMPUS TRADITIONS:

- 1. Bruin Junior ("BJ")—a symbol of class supremacy to be fought for whenever "flashed."
- 2. Victory Bell—to be used at athletic events and by the seniors as part of their homecoming float.

SENIOR PRIVILEGES:

- 1. Only seniors may pick flowers.
- 2. Applause in chapel is to originate with the seniors.
- 3. Seniors have first choice in the election of a faculty advisor; then juniors, sophomores, and freshmen.
- 4. Seniors are permitted a "sneak" day under the guidance of the advisor.

JUNIOR PRIVILEGES:

- 1. Juniors are responsible for all money concessions. Any fund-raising projects must have junior class approval.
- 2. Juniors decorate for baccalaureate and commencement and designate one man and one woman from their class to lead the procession on these two occasions.
- 3. Juniors sponsor the Junior-Senior Banquet.
- 4. Ten percent of all money raised by other classes and organizations is to be given to the Junior Class.

