

1996

1996 Media Guide

George Fox University Archives

Follow this and additional works at: https://digitalcommons.georgefox.edu/athletics_baseball

Recommended Citation

George Fox University Archives, "1996 Media Guide" (1996). *Baseball*. 63.
https://digitalcommons.georgefox.edu/athletics_baseball/63

This Media Guide is brought to you for free and open access by the George Fox University Athletics at Digital Commons @ George Fox University. It has been accepted for inclusion in Baseball by an authorized administrator of Digital Commons @ George Fox University. For more information, please contact arolfe@georgefox.edu.



1996 Bruin Baseball

GEORGE FOX COLLEGE



R O S T E R

1996 George Fox College Baseball Roster

No.	Name	Pos.	Yr.	Ht.	Wt.	Hometown	High School	Previous College
PITCHERS								
4	Mike Shear	RHP	FR	6-0	190	Junction City, Ore.	Junction City	
10	Alex Dobson	LHP	JR	6-1	210	Beaverton, Ore.	Beaverton	
13	Ryan Muñoz	RHP/OF	SO	6-1	185	Aloha, Ore.	Aloha	
14	Troy Schrenk	LHP	JR	5-10	170	Aurora, Ore.	North Marion	Lewis-Clark State
16	Kevin Calaba	RHP	SO	6-2	185	Portland, Ore.	Grant	
18	Ken Gilmore	RHP	FR	5-10	165	Coos Bay, Ore.	North Bend	
22	Will Clark	RHP	SO	5-11	170	Albany, Ore.	Santiam Christian	
23	Ethan Chew	LHP	SO	6-2	200	Seattle, Wash.	West Seattle	
27	Nate Fast	RHP	SO	6-2	190	Fresno, Calif.	Clovis	
20	Travis Tobin	RHP	FR	6-4	190	Beaverton, Ore.	Jesuit	
44	Nate Barnett	LHP	FR	6-1	210	Arlington, Wash.	Arlington Christian	
29	Chris Wood	RHP	FR	6-3	190	Bothell, Wash.	Bothell	
CATCHERS								
8	Ryan Corey	C	SR	6-1	210	Hermiston, Ore.	Hermiston	
19	Mark Tyler	C	FR	6-1	195	Bothell, Wash.	Bothell	
RS	Scott Box	C	FR	6-1	215	Redmond, Wash.	Inglemoor	
INFELDERS								
1	Lance Gilmore	INF	FR	6-0	180	Coos Bay, Ore.	North Bend	
3	Shawn Foote	INF	SO	5-8	165	Melba, Idaho	Melba	
5	Craig Oliver	INF	JR	5-9	165	Seattle, Wash.	Shorecrest	Yakima Valley CC
6	Cory Wilson	INF	SO	5-10	170	Wilsonville, Ore.	West Linn	Clackamas CC
7	Rob Hoover	INF	JR	6-0	195	West Linn, Ore.	West Linn	
11	Sundar Cook	INF	FR	5-9	165	Kirkland, Wash.	Juanita	
12	Pete Doman	INF	FR	5-10	165	Lynnwood, Wash.	Meadowdale	
28	Buster Ford	INF	SO	6-0	185	Corvallis, Ore.	Santiam Christian	
2	Bryan Grant	INF	FR	5-9	165	Salem, Ore.	Salem Academy	Biola University
OUTFIELDERS								
21	Aaron Jaramillo	OF	SR	5-10	175	Aloha, Ore.	Aloha	
24	Jeff Janosky	OF	SR	6-3	215	Kennewick, Wash.	Kennewick	
33	Mike Thompson	OF	SR	5-11	180	Bellevue, Wash.	Sammamish	
34	Nathan White	OF	SO	6-1	195	Walla Walla, Wash.	Walla Walla	
RS	Scott Spurlock	OF	SO	6-2	205	Coeur d'Alene, Idaho	Coeur d'Alene	

A GUIDE TO THE GUIDE

College Information	1
GFC Athletics	2
Athletic Affiliation	3
1995 Highlights	4
1995 Statistics	5
1996 Outlook	6-7
Baseball and Athletic Staff	8-10
Player Profiles	11-22
Opponent Information	23-24
Records/History	25-28
Miscellaneous	29

HOW TO REACH US

College Switchboard 503/538-8383 • SID Fax 503/537-3830	
Athletics Fax 503/537-3864	
Baseball Coach	
Pat Bailey	ext. 2914, Home 537-3023
Athletics Director	
Craig Taylor	ext. 2911, Home 472-9694
Associate Athletics Director	
Hal Adrian	ext. 2922, Home 646-4880
Sports Information Director	
Rob Felton	ext. 2127, Home 538-7722

George Fox College, in its 105th year, is one of America's Best Colleges. Eight times it has been given that designation by *U.S. News & World Report* magazine. In 1995 GFC was ranked second in academic reputation among Western Regional Liberal Arts Colleges, including colleges and universities from Texas to Hawaii. The magazine also named George Fox to its list of "Top Teaching Schools," second among liberal arts colleges in the western region.

George Fox is one of the nation's fastest-growing colleges. Enrollment more than tripled from 549 in 1986 to 1,717 in the fall of 1995.

The College offers unique programs to its students. Every incoming freshman is given a Macintosh computer to use and keep upon graduation. When students reach their third year at GFC, they are eligible for the Juniors Abroad program, where the College pays transportation costs for a three-week overseas study tour.

GFC students come from 32 states, one U.S. territory and nine nations. More than 40 religious denominations are represented on campus.

George Fox College had its beginnings when early Willamette Valley Quaker settlers established Friends Pacific Academy in 1885 for the Christian education of their children. The college division was organized in 1891 to provide more advanced instruction for students. In 1949, because of the many colleges in the Northwest with Pacific in their name, the College was renamed



George Fox in honor of the founder of the Friends (Quaker) Church.

The College is governed by a 42-member Board of Trustees elected by Northwest Yearly Meeting of Friends Church, which comprises nearly 8,000 members in approximately 50 churches in Oregon, Washington and Idaho.

Following a merger July 1, 1996, with Western Evangelical Seminary (a graduate school of 350 students in Tigard), the name will again change

— to George Fox University.

George Fox is accredited by the Northwest Association of Schools and Colleges. The College is one of 13 members of the national Christian College Consortium. GFC's undergraduate program is administered through three schools: Humanities, Natural and Behavioral Sciences, and Professional Studies. The 15 departments offer 34 majors with more than 600 courses.

An off-campus degree-completion program in either management and organizational leadership or management of human resources enrolls working adults in an evening program with classes in Portland, Salem and Eugene, Ore., and Boise, Idaho. Graduate programs offered are a Doctor of Psychology in clinical psychology, a Master of Arts in Teaching, a Master of Education, a Master of Business Administration, and a Master of Arts in Christian Studies.

The 74-acre tree-shaded campus a half-hour drive from Portland has undergone major expansion in recent years with 12 new buildings constructed. Part of a \$16 million Centennial Campaign, the \$5.3 million Edwards-Holman Science Center opened in the fall of 1994.

Alumni of George Fox are primarily in service-oriented vocations of Christian ministries, education, social work and medical fields. The College's most prominent alumnus is the late President Herbert Hoover, who attended Friends Pacific Academy.



George Fox College maintains one of the Northwest's most successful small-college athletic programs.

The teams win. George Fox has earned district or conference titles in eight sports during the 1990s. The College's highest national team finish came in the fall of 1992 when the women's cross country team finished as national runner-up.

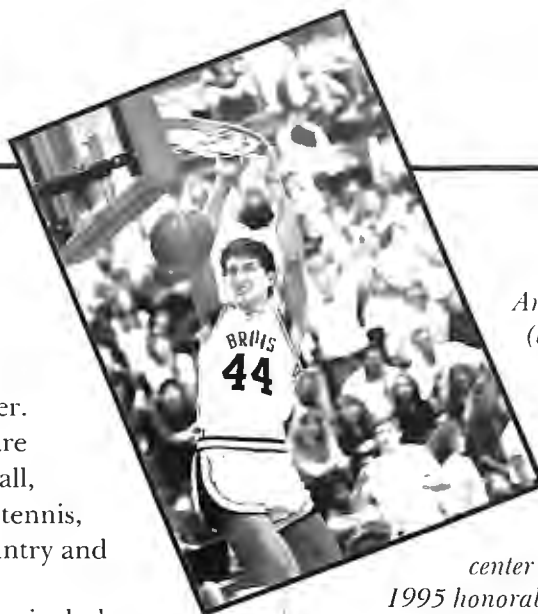
The athletes are successful. In the last six years, George Fox athletes have earned 69 NAIA All-American awards and 34 All-American Scholar-Athlete honors.

The coaches are award winners, as well. Every returning head coach has been named district or conference Coach of the Year at least once.

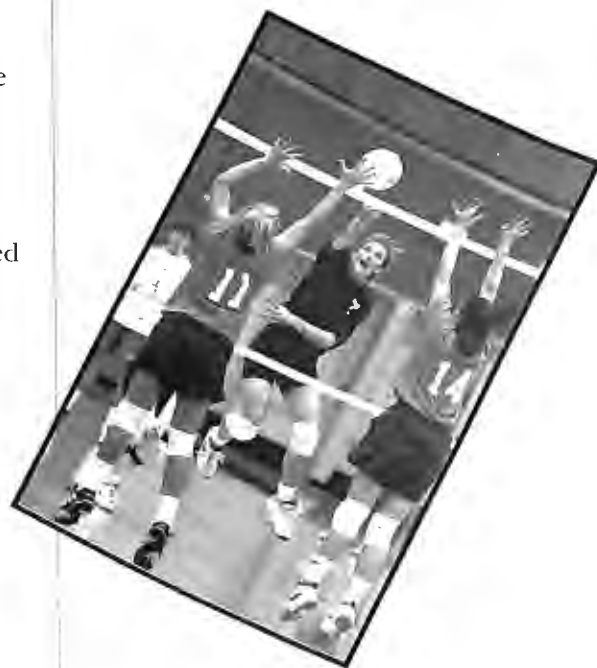
Intercollegiate athletics is an integral part of the overall education program at George Fox. About 15 percent of the student body participates in varsity athletics. Men's varsity athletic teams represent the College in baseball, basketball, track, tennis, cross

country and soccer. Women's teams are fielded in volleyball, basketball, track, tennis, softball, cross country and soccer.

Athletic facilities include the Coleman H. Wheeler Center for Sports and Physical Education; Colcord Field, which received a new polyurethane surface in the fall of 1993; and the Curtis and Margaret Morse Athletic Complex containing baseball diamond, softball field and soccer field. In 1994, five tennis courts were installed in preparation for the addition of tennis as a varsity sport.



*An All-American Trio:
(top left) Jill Beals (13-
time All-American,
1992 Hayward
Award finalist, and
Seattle Marathon
winner); (left)
1991-92 first-team
center Dave Wilson; (below)
1995 honorable mention outside
hitter Joanna Lofgren*



*An all-district performer in
baseball and soccer, Mike Nadeau
rejoined the nationally ranked
GFC soccer team in 1995 after
playing his second summer in
minor league baseball.*

ATHLETIC AFFILIATION

It's a year of transition for George Fox athletics. The College is in its first season in the Northwest Conference of Independent Colleges (NCIC).

The NCIC is leaving the National Association of Intercollegiate Athletics (NAIA) for the National Collegiate Athletic Association (NCAA) Division III. Currently a provisional member of the NCAA, George Fox will be eligible for national championship play in 1998-99. Until then, George Fox and the NCIC will continue to compete nationally in the NAIA.

GFC's men's and women's basketball teams play in NAIA Division II, while the College's other 11 sports are not divided into divisions.

The NAIA is an autonomous association administering programs leading to 13 men's and 11 women's national championships. The NAIA includes 364 four-year colleges and universities in 49 states and Canada. They are grouped in nine regions and 44 conferences.

The NCAA administers 80 championships in 21 sports for its member institutions, involving nearly 21,000 men and women student-athletes.



1996 POSTSEASON PLAY

Six teams will play in the NAIA Far West Region Tournament held May 10-11 at either Willamette University or Linfield College.

The champions of the Northwest Conference of Independent Colleges, Cascade Collegiate Conference, Golden State Athletic Conference and Pacific Northwest Athletic Conference will each earn an automatic berth. Two at-large berths will be awarded based upon regional rankings to remaining conference and independent teams.

The champion of the regional tournament will advance to the NAIA National Tournament held May 24-30 in Sioux City, Iowa.

GEORGE FOX POSTSEASON RESULTS

1994

District 2 Championships

GFC 26, Concordia 5
GFC 7, Linfield 1
GFC 3, Albertson 11
GFC 9, Western Oregon 3
GFC 7, Albertson 8 (10)

1993

District 2 Championships

GFC 13, Willamette 2
GFC 12, Western Oregon 8
GFC 7, Linfield 6

Area 1 Championships

GFC 4, Lewis-Clark State 6
GFC 5, Hawaii Pacific 8

1992

District 2 Championships

GFC 14, Northwest Nazarene 4
GFC 13, Linfield 4
GFC 5, Albertson College of Idaho 0
GFC 7, Albertson College of Idaho 5

Area 1 Championships

GFC 2, Lewis-Clark State 8
GFC 4, Hawaii Pacific 5

1991

District 2 Championships

GFC 15, Pacific 5 (8)
GFC 11, Concordia 2
GFC 7, College of Idaho 1
GFC 3, Linfield 2

Area 1 Championships

GFC 6, Whitworth 9
GFC 1, Hawaii Pacific 6

1990

District 2 Championships

GFC 0, Linfield 13
GFC 15, Western Oregon 5
GFC 6, College of Idaho 8

1989

District 2 Championships

GFC 5, Oregon Tech 1
GFC 5, College of Idaho 1
GFC 2, Linfield 6
GFC 2, College of Idaho 6

1988

District 2 Championships

GFC 3, Lewis & Clark 6
GFC 18, Pacific 10
GFC 0, Linfield 11

NORTHWEST CONFERENCE OF INDEPENDENT COLLEGES

George Fox College
Lewis & Clark College
Linfield College
Pacific Lutheran University
Pacific University
Whitman College
Whitworth College
Willamette University

Surprising Bruins Finish Just Shy of Playoff Berth

George Fox's 1995 baseball team found success in its first losing season since 1987.

The Bruins overcame adversity to finish third in their conference and, with two days remaining in the regular season, still maintained dreams of a berth in the NAIA regional tournament.

Few expected so much after Pat Casey — the coach who led the Bruins to seven conference titles in seven years — left to take the head job at Oregon State University. NAIA pollsters, who placed George Fox at No. 28 in the nation at the end of 1994, didn't give the Bruins a single vote in 1995.

Professional baseball scooped away three of George Fox's top juniors in 1994. Interim coach Jeff Hollamon was handed two returning starters and a pitching staff decimated by injuries to one senior and five freshmen.

Things began badly. The Bruins dropped 12 of their first 13 games in a tough preseason schedule.

But the team turned around once the conference season began. Senior pitcher Danny Graham of Federal Way, Wash., won Cascade Collegiate Conference Pitcher of the Week honors for throwing a complete-game one-hitter against Western Baptist College.

With wins in 10 of their next 12 conference games, the surprising Bruins surged to the top of the conference standings.

Second baseman Marty Beyers gave the Bruins a taste of Canadian-style baseball. The junior from Surry, British Columbia, had at least one hit in 29 straight games, from March 9 through May 3. He led the team in batting with a .377 average and collected 63 hits, the third-highest season total in George Fox history.

Joe Gordon, a third baseman from Simi Valley, Calif., came on in the second half of the season to finish with a .305 batting average. His 13 doubles tied him for sixth-most in a season at George Fox. He led the team with 29 runs batted in.

Ryan Corey, a junior catcher from Hermiston, Ore., provided more muscle. He swatted eight home

runs, third-best ever by a Bruin, and 12 doubles, eighth in the GFC record books.

With the elimination of NAIA District 2 and its postseason tournament last season, the only way to advance to the regional playoffs was to finish in one of the top two spots in the Cascade Collegiate Conference. The Bruins came surprisingly close.

George Fox lost its grip on the conference lead after being swept by Western Oregon State College in GFC's second-to-last conference series. The Bruins went into the final conference series needing a sweep of Albertson College of Idaho to reach the playoffs, but lost three and won the season finale. The team finished 13-10 in conference, 15-29 overall.

Five members of the team received conference honorable mention, including Graham, Beyers and Corey. Tony Iranshad, a four-year infielder from Milwaukie, Ore., was selected at shortstop, and outfielder/pitcher Ryan Muñoz, a freshman from Aloha, Ore., earned the award as a utility player.

Pat Bailey, who led his West Linn High School baseball team to a runner-up finish in the Oregon Class 4A tournament this season, will replace Hollamon.

"I'm really happy for the guys that played this year and stuck with the program," said Hollamon. "I appreciate them for that. I think we could have done better — but, then again, we did well."



Danny Graham won conference pitcher of the week honors after throwing a one-hitter against Western Baptist College.

S T A T I S T I C S



*Joe Gordon hit 13 doubles in 1995,
sixth best in GFC history.*

1995 Season Statistics

HITTING

PLAYER	GP	AB	R	H	2B	3B	HR	RBI	BA	SB/SBA	BB	K'S	E
Beyers	44	167	44	63	9	1	5	17	.377	7/8	21	15	17
Iranshad	44	164	29	46	11	0	2	24	.280	1/1	16	21	13
Corey	44	170	12	48	12	3	8	28	.282	0/0	19	28	14
Janosky	43	125	31	32	7	1	5	25	.256	6/6	32	42	2
Jaramillo	40	118	18	30	5	0	0	18	.254	2/2	35	27	2
Gordon	38	128	25	39	13	1	7	29	.305	1/1	15	26	19
Hoover	39	120	11	28	5	0	0	19	.233	5/6	24	40	9
Graham	36	130	10	30	4	0	1	24	.231	1/1	8	16	4
Muñoz	38	149	18	48	6	0	1	14	.322	9/10	10	13	2
Ford	23	66	10	14	1	0	0	1	.212	1/1	5	5	4
Foote	8	14	10	3	0	0	0	1	.214	8/8	1	3	1
Spurlock	16	35	3	3	0	0	0	0	.086	2/2	2	14	4
White	1	2	1	1	0	0	0	2	.500	0/0	0	0	0
Nickel	1	2	0	0	0	0	0	0	.000	0/0	0	2	1
TOTALS	44	1,377	229	384	69	6	29	198	.279	43/45	177	245	105

PITCHING

PITCHER	GP	IP	W	L	GS	S	H	R	ER	BB	SO	ERA
Graham	13	76.66	4	8	12	0	74	60	45	33	37	5.31
Tobin	1	4.66	0	1	1	0	2	6	1	5	0	1.93
Fast	12	68.33	3	4	6	0	65	51	40	26	33	5.28
Avery	7	26.33	0	3	4	0	40	24	20	10	11	6.84
Calaba	15	61.66	5	7	11	0	63	53	48	55	44	7.06
Meyers	1	1.0	0	0	0	0	0	0	0	0	1	0.00
Clark	17	38.33	1	2	1	1	27	21	12	18	21	2.83
Muñoz	9	52.66	2	4	9	0	82	44	39	12	20	6.72
Chew	12	28.33	0	0	1	0	33	30	25	26	14	8.00
Iranshad	1	1.0	0	0	0	0	2	2	1	0	1	9.00
Jaramillo	2	2.33	0	0	0	0	5	4	3	4	1	11.59
TOTALS	44	361.33	15	29	44	1	393	295	234	189	183	5.83

Bruins Set for Inaugural Northwest Conference Season

First-year George Fox College baseball coach Pat Bailey isn't making any predictions about the 1996 Bruins.

On one hand, he has one of the top defensive outfielders in the Northwest, an all-conference catcher, and one of the best pitchers in GFC history.

The other hand holds an untested infield and a team playing in a new conference.

The former West Linn High School coach isn't sure how the Bruins will fare in their first season in the Northwest Conference of Independent Colleges. A first-place conference finish wins a berth in the six-team Far West Regional tournament. Two at-large berths are available.

George Fox was an NAIA baseball powerhouse under head coach Pat Casey, who left for Oregon State University in 1994 after winning seven consecutive conference titles. After a year of transition, Bailey takes over as the Bruins' head coach. He leaves a West Linn team that last year was the Oregon 4A state runner-up.

Bailey inherits a team with 15 returners, including six fielders with starting experience. Recruiting has added 10 freshmen and four transfers.

Bailey likes the team chemistry. "That's one of our big strengths," he says. "We're really close. We support one another and pick each other up."

On the field, George Fox's strengths will be behind the plate and in the outfield.

1994 all-Cascade Conference catcher **Ryan Corey (Sr., Hermiston HS, Ore.)** is a potential professional baseball draft pick.

"I think he's one of the best small-college catchers in the Northwest and perhaps the country," says Bailey.

Last year, Corey hit his way into the GFC top 10 in season doubles, triples and home runs.

Corey will be backed up at catcher by **Mark Tyler (Fr., Bothell HS, Wash.)**.

"Mark is an outstanding hitter," says Bailey. "He's a contact guy with occasional power. We'll use him primarily as our designated hitter."

Bailey also is high on his outfielders: **Mike Thompson (Sr., Sammamish HS, Bellevue, Wash.)**; **Jeff Janosky (Sr., Kennewick HS, Wash.)**; **Aaron Jaramillo (Sr., Aloha HS, Ore.)** and utility/pitcher **Ryan Muñoz (So., Aloha HS, Ore.)**.

"At this level, there won't be many better," he predicts. "We're very strong defensively. They're as good as or better than a lot of NCAA Division I outfielders."

After winning honorable mention All-American honors as a junior in 1994, Thompson redshirted last year. He returns as the team's lead-off batter.

"Mike'll be the spark plug for our team," predicts Bailey. "He has above-average speed and is an excellent baserunner who likes to take risks."

Bailey is counting on Janosky to drive in runs as GFC's No. 4 hitter.

"Janosky is a guy who's going to hit with power," he says. "He's a pretty complete baseball player."

Jaramillo and Muñoz will trade off in right field.

Muñoz was a Cascade Conference honorable mention selection last year as a freshman utility player. Bailey thinks he'll hit between .350 and .400 this season.

Jaramillo missed fall baseball practice playing soccer for George Fox, and Bailey says he's shown

tremendous improvement since starting this spring.

"He's got occasional power, an above-average speed, and a good arm."

The return of an ace has bolstered a young pitching staff.

Troy Schrenk (Jr., North Marion HS, Aurora, Ore.) returns to the Bruins after redshirting last season at Lewis-Clark State College. Schrenk was 8-1 for the Bruins in 1994, the most wins ever collected in a season by a George Fox pitcher.

Of GFC's 12 pitchers, 10 are underclassmen.

Likely to be in GFC's three-man rotation once the conference season begins are **Schrenk**, **Muñoz** and **Nate Barnett (Fr., Arlington Christian HS, Wash.)**. **Alex Dobson (Jr., Beaverton HS, Ore.)**; **Kevin Calaba (So., Grant HS, Portland)**; **Ken Gilmore (Fr., North Bend HS, Coos Bay, Ore.)**, and **Nate Fast (So., Clovis HS, Fresno, Calif.)** likely will pitch middle relief, and **Will Clark (So., Santiam Christian HS, Albany, Ore.)** is the team's top closer.

"Our pitching staff needs to throw strikes so they can change speeds and locations," says Bailey. "We don't have anybody who can blow the ball by people."

The question mark for the season is the infield.

"We're very young and lack experience," says Bailey.

Most of the positions are up for grabs.

Rob Hoover (Jr., West Linn HS, Ore.) and **Nate Barnett** are battling for the starting spot at first base.

Hoover is a converted catcher, and Bailey says he's made great improvements this season.

Barnett was a Washington all-state game selection and won first-team all-Wesco League and all-area honors.

He'll be one of GFC's top hitters and will pitch occasionally.

"As a pitcher, he's really a raw talent. He's the hardest thrower on the team."

At second base, it's **Buster Ford** (So., **Santiam Christian HS, Corvallis, Ore.**) and **Shawn Foote** (So., **Melba HS, Idaho**).

"Buster is probably going to start at second base, shortstop or third base," says Bailey. "He's a very versatile infielder and will be an integral part of our team this year."

Bailey says Foote's strengths are

his speed and good work habits.

A second-team all-Wesco League infielder, **Pete Doman** (Fr., **Meadowdale HS, Lynnwood, Wash.**) begins the year as the starter at shortstop.

"Whether he ends up starting or not, he's going to see a lot of playing time," predicts Bailey. "He's a very good athlete and has an above-average arm."

A preseason injury to Yakima Valley Community transfer **Craig Oliver** (Jr., **Shorecrest HS, Seattle, Wash.**) has given **Lance Gilmore** (Fr., **North Bend HS, Coos Bay, Ore.**) and **Cory Wilson** (So., **West Linn HS, Wilsonville, Ore.**) a shot at the starting position at third base.

A high school first-team all-state selection, Oliver is coming off a broken arm.

"Craig's been through a lot of adversity," says Bailey. "When we get him healthy, he'll be an important player on our team."

Bailey says Wilson — a former high school player for him — will find time at third base or in the outfield.

"He's an extremely hard worker who makes the most out of his God-given talent."

At North Bend High, Gilmore was a Oregon class 4A first-team all-state shortstop and MVP of the Midwestern League.



1996 George Fox Baseball Team: (front row from left) Lance Gilmore, Will Clark, Craig Oliver, Ken Gilmore, Sundar Cook, Pete Doman, Aaron Jaramillo, and Shawn Foote, (second row) Troy Schrenk, Mike Thompson, Buster Ford, Joe Gordon, Rob Hoover, Cory Wilson, Bryan Grant, Mark Tyler and Mike Shear, (third row) Ryan Muñoz, Alex Dobson, Nate White, Ryan Corey, Nate Fast, Kevin Calaba, Nate Barnett and Scott Spurlock, (fourth row) Assistant Coach Geoff Loomis, Assistant Coach Kevin Jones, Scott Box, Jeff Janosky, Travis Tobin, Chris Wood, Ethan Chew, Brian Meyers, and Head Coach Pat Bailey.



PAT BAILEY comes to George Fox after spending a decade building a successful baseball program at West Linn High School.

His teams advanced to the Class 4A state playoffs seven times and in his final season were edged 2-1 in the 1995 state championship game.

Four times Bailey has been named Three Rivers League Coach of the Year. He was at West Linn for 10 years as head baseball coach and assistant football coach. His baseball teams won five league titles and reached the Oregon semifinals in 1989 and 1991. Since 1989, his combined record as a high school and American Legion baseball coach is 315-105 (.750).

Previous to West Linn, Bailey taught and coached at Willamette High School, Eugene, Ore., for three years.

He has worked at various baseball camps and served as a pitching coach at the University of Portland in 1992.

"Based on past performance at every level he's coached, he'll be successful," says George Fox Athletics Director Craig Taylor. "At George Fox, we tend to define success off the field as well as on the field. He's strong in both areas. There wasn't anybody who contacted me who didn't have very good things to say about Pat. He's highly regarded as a teacher, coach and human being."

"I'm really excited," says Bailey. "George Fox really matches up with me personality-wise and philosophically. As a coach, I want to make sure every kid is making the most of his God-given talent. I want them to be a class act in the classroom and the community. I want the kids to match the school and my personality. I stress to my team, we're a family. Family members are more important than themselves. If you're going to be a leader, you must be a servant first."

Bailey is a 1974 graduate of Moscow High School in Idaho, where he played football, basketball and was the baseball team's MVP.

A two-year baseball letterwinner at the University of Idaho, Bailey was a starting outfielder and team captain as a senior. He completed his business education degree in 1978. Bailey also lettered two years in baseball at North Idaho College in Couer d'Alene, Idaho.

Bailey continued playing semiprofessionally until age 28.

He earned a Master of Education degree in educational administration from the University of Oregon in 1983.

At West Linn, Bailey was a business instructor and in 1994 was named to Who's Who Among America's Outstanding High School Teachers. In 1995, he was one of 30 outstanding educators honored with a 1995 Education Excellence Award, given by Associated Oregon Industries.

At George Fox, Bailey is an assistant professor of health and human performance.

Bailey and his wife, Susan, live in Newberg with their children: Alex, 12, and Ann, 9.



Pat Bailey



KEVIN JONES

One of the top players at University of Portland during the 1990s, assistant coach Kevin Jones rejoins his former coach Pat Bailey.

Under Bailey, Jones was a 1989 Oregon Class 4A first team all-state infielder and team MVP at West Linn

High School. He went on to UP, where he earned second team All-Pacific-10 Northern Division honors and was a two-time Pacific-10 All-Academic first-team selection. He played alongside GFC assistant coach Geoff Loomis.

Jones graduated in 1994 with a political science degree. He assisted Bailey during the 1994 American Legion season and has helped out at various camps.

Currently, he lives in Aurora and handles project management for an engineering company.



GEOFF LOOMIS

1992 Pacific-10 Northern Division Player of the Year Geoff Loomis joins the George Fox staff as an assistant coach.

He was University of Portland's MVP in 1992 and was drafted by the Oakland Athletics organization. He

played two seasons for the Southern Oregon Athletics and was team MVP in 1993.

A third baseman, he was a two-time first-team All-Pacific-10 Northern Division selection. His .376 career batting average set a school record at UP, as did his 80 hits, 22 doubles and 33 extra base hits in a season.

At UP he was a teammate of GFC assistant coach Kevin Jones and played under Pat Bailey during his one-year stint as assistant coach.

Loomis had a stellar prep career at Oregon City High School, where he was named 1989 first team Class 4A all-

state and Player of the Year in the Three-Rivers League. He had a .610 batting average and led the state with 57 RBI.

Loomis earned finished his bachelor's degree in marketing and management in 1994 and plans to begin a Master's of Arts in Teaching at Pacific University in June.

He and his wife Anna live in Beaverton.

JEFF SMITH

Volunteer assistant coach Jeff Smith comes to George Fox with plenty of coaching experience.

Smith held the head baseball coaching position at Pierce Community College in Tacoma, Wash., in 1986. He's been an assistant at University of Puget Sound and worked alongside Pat Bailey as an assistant at University of Portland in 1991-92. In between his collegiate coaching jobs, he's helped out at the high school level at Hillsboro, Tigard and Sunset High Schools.

A 1982 graduate of University of Portland, Smith was a four-year letterwinner as a third baseman and designated hitter. He was named second-team all-Nor-Pac designated hitter in 1981 and Portland's most inspirational player in 1982.

Currently, he works at Hillsboro High School teaching business and math.

He and his wife Kathryn live in Portland.



CRAIG TAYLOR is in his eighth year as George Fox College Athletics Director, but he has been associated with the Bruins for 22 years as player, coach and professor. Taylor, 44, came to George Fox in 1971 as a junior forward on the men's basketball team. In 1972-73, he helped the Bruins to their first-ever

NAIA District 2 title.

Taylor graduated from George Fox in 1974, named both Outstanding Man in Teacher Education and Outstanding Physical Education Major. He received a Master of Science degree in education from Linfield College in 1975. While enrolled in graduate courses, he was a residence hall director at GFC.

From 1976 through 1979, Taylor was the Bruin baseball coach while also serving as assistant basketball coach. He worked at a sporting goods retailing firm from 1979 to 1981.

Taylor was the coach of the women's basketball team from 1981 to 1993, producing a 162-155 record. He also coached GFC softball from 1981 to 1988, and again in 1990. His teams compiled a 77-99-1 record, and in 1985 he was named NAIA District 2 Coach of the Year.

At George Fox, the athletics director is responsible for athletic department functions, including budgeting eligibility and compliance with GFC, NAIA and NCAA regulations, and department and sports center management.

Taylor has three children: Leah, a 21-year-old senior at GFC; Bree, 16; and Casey, 6. Taylor and his wife, Kathy, live in McMinnville.



HAL ADRIAN became Associate Director of Athletics at George Fox in 1994. In that position, he is responsible for the Bruin Club and general fund raising, as well as for special projects such as the George Fox Sports Hall of Fame and sports banquet.

A 1956 graduate of Lewis & Clark College, Adrian taught and coached in the Beaverton School District until 1961, when he joined North Pacific Insurance. In 1994 he retired as Vice President of Human Resources. For more than 40 years, he has been involved in church music leadership, chairing the Billy Graham Crusade music committee in 1992. Adrian also has been active in United Way leadership.

Hal and his wife, Audrey, have three sons: Jay, Greg, and Dave, who currently is George Fox's Vice President for Development.



ROB FELTON is in his fourth year as Sports Information Director for George Fox's 13 athletic teams. A 1992 GFC graduate with a degree in communication arts, Felton was a GFC sports information student assistant for three years.

The GFC Sports Information Office has produced 32 national award-winning publications in the last 14 years. Most recently, the 1994-95 women's basketball guide earned second in a national contest sponsored by the College Sports Information Directors of America.

Felton, 25, also has additional responsibilities as Assistant Director of Public Information.

A magna cum laude graduate, he was named Outstanding Student in Communication Arts and to Who's Who Among Students in American Colleges and Universities. He was sports editor for the student newspaper, The Crescent, for two years and editor as a sophomore.

Nate Barnett



44

Pitcher, Freshman, 6-1, 210
Bats: Left/ Throws: Left
Hometown: Arlington, Wash.
(Arlington Christian HS – '95)

Personal: Born 9/26/76...Liberal arts major...Son of Chuck and Mary Lou Barnett...High school valedictorian...High school letterwinner in basketball and soccer....Hobbies include fishing, traveling, mountain biking, playing the piano.

George Fox: Starting first baseman as freshman...Line drive, contact hitter with gap power...Raw talent as a pitcher...Hardest thrower on team (throws in mid-80s)...Above-average curve ball.

Arlington Christian HS: Coached by Tom Roys...**1995:** Class 2A all-state...First team all-area...First-team All-Wesco League pitcher and first baseman...Team captain and MVP...Arlington Times Athlete of the Year...Hit .463 with four doubles, two home runs and 10 RBI...5-2 pitching record...2.86 ERA...65 strikeouts...**1994:** First-team All-Wesco League first baseman and second-team pitcher...Team captain and MVP...Best batting average in school history (.473)...Two-time Everett Herald Athlete of the Week...6-1 pitching record...2.58 ERA...48 strikeouts.

Scott Box



30

Catcher, Redshirt, 6-1, 215
Bats: Right/ Throws: Right
Hometown: Redmond, Wash.
(Inglemoor HS – '95)

Personal: Born 6/29/76...Liberal arts major...Son of Tom and Janice Box...High school letterwinner in basketball...Hobbies include reading and playing the guitar.

George Fox: Redshirting season while all-conference catcher Ryan Corey plays final season...Good athlete...Gaining experience.

Inglemoor HS: Coached by Paul Moody...**1995:** Second-team All-King Co. Conference...Team captain...**1994:** Second-team All-King Co. Conference.

Kevin Calaba



16

Pitcher, Sophomore, 6-2, 185
Bats: Right/Throws: Right
Hometown: Portland, Ore.
(Grant HS – '94)

PERSONAL: Born 10/4/75...Liberal arts major...Son of Gary and Ulrika Calaba...Hobbies include playing guitar, skiing, running, basketball and soccer.

GEORGE FOX: Talented, hard-throwing right-hander...Improved fundamentals...**1995:** 5-7 record including a nine-inning three-hit win over Cascade Conference champ Albertson College in season finale...44 strikeouts, sixth in GFC record book...15 appearances in a season puts him among school top 10.

GRANT HS: Coached by Rob Kennewell...**1994:** Team captain...2.19 ERA, 79 strikeouts...Also played shortstop...Hit .357.

GFC CAREER STATS:

Pitching

Year	GP	GS	GC	IP	W	L	S	H	R	ER	BB	K's	SH	ERA
1995	15	11	0	63.66	5	7	0	63	53	48	55	44	0	7.06

Ethan Chew



23

Pitcher, Sophomore, 6-2, 200
Bats: Left/Throws: Left
Hometown: Seattle, Wash.
(West Seattle HS – '93)

PERSONAL: Born 3/13/75...Social studies teaching major...Son of David and Mary Jo Chew...Hobbies include basketball and golf...Winner of Seattle Chamber of Commerce Business Award.

GEORGE FOX: Spot reliever...Working on consistency...Hard worker...Great team player...**1995:** Middle reliever... Appeared in 12 games...Started versus Linfield College (5/10)...**1994:** Did not play on team.

WEST SEATTLE HS: Coached by Velko Vitalica...**1993:** 2.8 ERA...Also lettered in wrestling...**1992:** 3.25 ERA.

GFC CAREER STATS:

Pitching

Year	GP	GS	GC	IP	W	L	S	H	R	ER	BB	K's	SH	ERA
1995	12	1	0	28.33	0	0	0	33	30	25	26	14	0	8.00

Will Clark



22

Pitcher, Sophomore, 5-11, 170
Bats: Right/Throws: Right
Hometown: Albany, Ore.
(Santiam Christian HS – '94)

PERSONAL: Born 7/10/76...Elementary education major...Son of Bill and Pam Clark...Hobbies include sports-card collecting and water sports.

GEORGE FOX: No. 1 short reliever...Very focused...**1995:** Tied GFC record by pitching in 17 games...2.83 ERA led team and fifth-best in GFC history...Started against No. 1-ranked Lewis-Clark State College (3/9).

SANTIAM CHRISTIAN HS: Coached by Matt Nosack...**1994:** Class 2A third-team all-state...First-team all-West Valley League...Team MVP...64 IP, 1.31 ERA, 96 strikeouts, 9-4...Hit .471 in 70 at bats...**1993:** Class 2A honorable mention all-state...First-team all-West Valley League...Team MVP.

GFC CAREER STATS:

Pitching

Year	GP	GS	GC	IP	W	L	S	H	R	ER	BB	K's	SH	ERA
1995	17	1	0	38.33	1	2	1	27	21	12	21	18	0	2.83

Sundar Cook



11

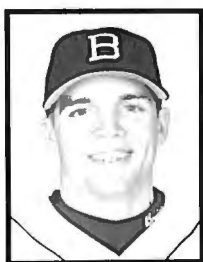
Infield, Freshman, 5-9, 165
Bats: Right/Throws: Right
Hometown: Kirkland, Wash.
(Juanita HS – '95)

PERSONAL: Born 3/8/77...Son of Jerry and Barbara Cook...Athletic training major...High school letterwinner in baseball and football.

GEORGE FOX: Outstanding defensively...Improving hitting and throwing...Work in weight room will allow him to contribute more next season.

JUANITA HS: Coached by Gary Groening...**1995:** All-King Co. League Honorable Mention... .294 batting average... 25 hits.

Ryan Corey



8

Catcher, Senior, 6-1, 210
Bats: Right/Throws: Right
Hometown: Hermiston, Ore.
(Hermiston HS – '92)

PERSONAL: Born 5/8/74...Physical fitness major...Son of Jim and Kathy Corey...High school letterwinner in football and basketball...Member of high school National Honor Society...Hobbies include hunting and fishing.

GEORGE FOX COLLEGE: Team leader...No. 3 hitter...Great work ethic...Impact player...Received memorial scholarship from Oregon Sports Hall of Fame...**1995:** Cascade Conference honorable mention catcher...Didn't miss a game...Made GFC top 10 with 8 home runs, 12 doubles and three triples...**1994:** All-Cascade Conference selection...Hit home run against Portland State University that cleared Civic Stadium and went into 18th Street.

EASTERN OREGON STATE COLLEGE: Coached by Rob Cushman.

HERMISTON HS: Coached by Rob Phillips...**1992:** Class 4A honorable mention all-state catcher... .407 batting average, 3 home runs...Played in State-Metro series...Team captain...Hermiston High School Athlete of the Year.

GFC CAREER STATS:

Hitting

Year	GP	AB	R	H	2B	3B	HR	RBI	BA	SB/SBA	BB	SO	E
1994	41	121	13	36	8	0	5	29	.298	1/1	27	27	8
1995	44	170	12	48	12	3	8	28	.282	0/0	19	28	14
Total	85	291	25	84	20	3	13	57	.289	1/1	44	55	22

Alex Dobson



10

Pitcher, Junior, 6-1, 210
Bats: Right/Throws: Left
Hometown: Beaverton, Ore.
(Beaverton HS – '90)

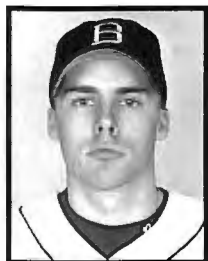
PERSONAL: Born 11/12/71...Health education major...Son of William and Ruth Dobson...After one season as junior varsity coach at Lake Oswego High School, stepped up to become the youngest head baseball coach in Oregon class 4A. After coaching in 1994 and 1995, left position to pursue teaching degree...Hobbies include coaching baseball, fishing, golf and playing guitar.

GEORGE FOX: Begins season as No. 5 pitcher...Likely will throw middle relief in conference play...Good control...Needs to change speeds to be effective.

CHEMEKETA CC: Coached by Steve Headrickson...**1991:** Played first base.

BEAVERTON HS: Coached by Mike Bubalo...**1990:** Played first base...Team won Metro League title.

Pete Doman



12

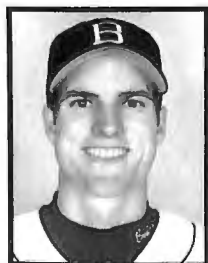
Infield, Freshman, 5-10, 165
Bats: Right/Throws: Right
Hometown: Lynnwood, Wash.
(Meadowdale HS – '95)

PERSONAL: Born 3/16/77...Liberal arts major...Son of Scott and Shirley Doman...High school letterwinner in cross country...Hobbies include hunting, wakeboarding, and weight lifting.

GEORGE FOX: Starting shortstop as freshman...Good athlete...Above-average arm...Good contact hitter.

MEADOWDALE HS: Coached by Ron Martin...**1995:** Second-team All-Wesco League...Team co-captain...Hit two home runs, one double (6 RBI) and earned save in single game... .395 batting average...18 RBI, 2 home runs, 7 doubles...**1994:** .325 batting average...17 RBI, 2 home runs, 4 doubles.

Nate Fast



27

Pitcher, Sophomore, 6-2, 190
Bats: Right/Throws: Right
Hometown: Fresno, Calif.
(Clovis HS – '94)

PERSONAL: Born 10/30/75...Psychology major...Son of Roger and Joan Fast...Hobbies include basketball, fishing and weight lifting.

GEORGE FOX: Consistent performer...Versatile...Could start or come in relief...**1995:** 3-4 record...Second-lowest ERA on team (5.28)...Threw two-hitter versus Concordia College (4-22).

CLOVIS HS: Coached by James Patrick...**1994:** Finished 4-0 with 2.33 ERA, second best in league.

GFC CAREER STATS:

Pitching

Year	GP	GS	GC	IP	W	L	S	H	R	ER	BB	K's	SH	ERA
1995	12	6	0	68.33	3	4	0	65	51	40	26	33	0	5.28

Shawn Foote



3

Infield, Sophomore, 5-8, 165
Bats: Switch/Throws: Right
Hometown: Melba, Idaho
(Melba HS – '93)

PERSONAL: Born 8/24/74...Pre-law/business major...Son of E.G. and Patsy Foote...Hobbies include snow skiing, drawing, painting and fishing...An Eagle Scout...Twin brother played baseball and football for Pacific Lutheran University and other brother plays baseball for Albertson College of Idaho.

GEORGE FOX: Battling for playing time at second base ... Above average speed...Good work habits...Working to improve arm accuracy...**1995:** Back-up middle infielder... 8 for 8 in stolen base attempts.

PACIFIC LUTHERAN UNIVERSITY: **1994:** Did not play baseball.

MELBA HS: Coached by Corky Hill...**1993:** Team captain ...All-Western Idaho Conference...**1992:** Team captain... Also lettered in football, basketball and wrestling.

GFC CAREER STATS:

Hitting

Year	GP	AB	R	H	2B	3B	HR	RBI	BA	SB/SBA	BB	SO	E
1995	8	14	10	4	0	0	0	1	.214	8/8	1	3	1

Buster Ford



28

Infield, Junior, 6-0, 185
Bats: Right/Throws: Right
Hometown: Corvallis, Ore.
(Santiam Christian HS – '93)

PERSONAL: Born 9/8/75...Business major...Son of Bill and Jackie Ford...Hobbies include hunting, fishing and snowboarding.

GEORGE FOX: Likely starter at second base, but could play at shortstop or third base...Integral part of team...Very good glove actions and quick feet...**1995:** Played in 23 games.

SANTIAM CHRISTIAN HS: Coached by Matt Nosack...**1993:** Team captain...All-West Valley League selection...Named to 2A all-state team...Played in all-state game...**1992:** Team captain.. All-West Valley League selection...Also a four-year letterwinner in football and two-year letterwinner in basketball.

GFC CAREER STATS:

Hitting

Year	GP	AB	R	H	2B	3B	HR	RBI	BA	SB/SBA	BB	SO	E
1995	23	66	10	14	0	0	0	1	.212	1/1	5	5	4

Lance Gilmore



1

Infield, Freshman, 6-0, 180
Bats: Right/Throws: Right
Hometown: Coos Bay, Ore.
(North Bend HS – '95)

PERSONAL: Born 4/1/77...Elementary education major...Son of Dan and Debbie Gilmore...High school letterwinner in football and basketball...Younger brother of teammate Ken Gilmore.

GEORGE FOX: Will see most playing time at shortstop and third base as backup...Very hard worker...Working on improving fundamentals.

NORTH BEND HS: Coached by Dave Gibson...**1995:** Class 4A first team all-state..First-team all-Midwestern League shortstop...Midwestern League Most Valuable Player...Team captain...Team MVP...Selected to play in the 1995 State-Metro All-Star Baseball Series...North Bend High School Male Athlete of the Year...Oregon Boy's State Delegate... .446 batting average...32 RBI, 8 home runs, 8 doubles...**1994:** Played shortstop.

Ken Gilmore



18

Pitcher, Freshman, 5-10, 165
Bats: Right/Throws: Right
Hometown: Coos Bay, Ore.
(North Bend HS – '94)

PERSONAL: Born 12/31/75...Computer Science Major...Son of Dan and Debbie Gilmore...Older brother of teammate Lance Gilmore...Class salutatorian...Boys State delegate...Hobbies include drawing, hunting, camping, and other sports.

GEORGE FOX: Will throw middle relief...Control pitcher...Good downplane curve ball.

NORTH BEND HS: Coached by Bill Horning...**1994:** Team captain and MVP... All-Midwestern League utility player...**1992:** Pitched perfect game versus Marshfield High.

Bryan Grant



2

Infielder, Freshman, 5-9, 165
Bats: Left/Throws: Right
Hometown: Salem, Ore.
(Salem Academy – '93)

PERSONAL: Born 5/16/75...Business and economics (accounting emphasis) major...Son of Steve and Kathy Grant...Father is GFC volleyball coach...High school letterwinner in basketball.

GEORGE FOX: Backup third baseman...Working hard on improving fielding fundamentals...Good work ethic...Positive attitude.

BIOLA UNIVERSITY: Did not play.

SALEM ACADEMY: Coached by Darrell Beam...**1993:** Class 2A first-team all-state third base...Team MVP...**1992:** Class 2A second-team all-state third base.

Rob Hoover



7

Infield, Junior, 6-0, 195
Bats: Right/Throws: Right
Hometown: West Linn, Ore.
(West Linn HS – '92)

PERSONAL: Born 8/24/73...Business major...Son of Bob and Julie Hoover...Hobbies include fishing and hunting.

GEORGE FOX: Battling for starting spot at first base...Shown great improvement...Very focused...Hard worker...Again playing for former prep coach Pat Bailey...**1995:** Moved from catcher to first base...Hit 4 for 6 versus Linfield College.

PACIFIC LUTHERAN UNIVERSITY: 1993: Coached by Larry Marshall.

WEST LINN HS: Coached by Pat Bailey...**1992:** Team captain...All-Three Rivers League selection...Named a National Football Hall of Fame Scholar-Athlete...**1991:** Team captain...All-Three Rivers League selection...Also lettered in football.

GFC CAREER STATS:

Hitting

Year	GP	AB	R	H	2B	3B	HR	RBI	BA	SB/SBA	BB	SO	E
1995	39	120	11	28	5	0	0	19	.233	5/6	24	40	9

Jeff Janosky



24

Outfield, Senior, 6-3, 215
Bats: Left/Throws: Left
Hometown: Kennewick, Wash.
(Kennewick HS – '91)

PERSONAL: Born 3/29/73...Fitness management major...Son of Bill and April Janosky...Hobbies include hunting, skiing and jet skiing.

GEORGE FOX: Fastest player on team...No. 4 hitter...Can hit with power...Complete baseball player...**1995:** 32 walks — third-most ever by a GFC player...6 for 6 in stolen base attempts.

COLUMBIA BASIN COLLEGE: 1993:...Stole school-record 22 bases...Stole four in one game...**1992:** All-NWAACC second-team selection...Hit .300...Stole 18 bases.

KENNEWICK HS: Coached by Dean Hoff...**1991:** Team finished fourth at state.

GFC CAREER STATS:

Hitting

Year	GP	AB	R	H	2B	3B	HR	RBI	BA	SB/SBA	BB	SO	E
1995	43	125	31	32	7	1	5	25	.256	6/6	32	42	2

Aaron Jaramillo



21

Outfield, Senior, 5-10, 175
Bats: Left/Throws: Left
Hometown: Aloha, Ore.
(Aloha HS – '92)

PERSONAL: Born 1/21/74...Business/economics major... Son of Michael and Liz Jaramillo...High school letterwinner in soccer...Played in fall for George Fox's nationally ranked soccer team (2 goals/1 assist)...Hobbies include hunting and fishing.

GEORGE FOX: Will either start or be backup in right field...Contact hitter with occasional power...**1995:** Drew 35 walks, second-most ever by a GFC player.

MT. HOOD CC: 1994: Coached by Dale Stebbins.

BIOLA UNIVERSITY: 1993: Coached by Gary Husson.

ALOHA HS: Coached by Bill Love...**1992:** Class 4A third-team all-state...First-team all-Metro League...Played in Metro-State Series.

GFC CAREER STATS:

Hitting

Year	GP	AB	R	H	2B	3B	HR	RBI	BA	SB/SBA	BB	SO	E
1995	40	118	18	30	5	0	0	18	.254	2/2	35	27	2

Ryan Muñoz



12

Pitcher/Utility, Sophomore, 6-1, 185
Bats: Left/Throws: Right
Hometown: Aloha, Ore.
(Aloha HS – '94)

PERSONAL: Born 5/9/76...Liberal arts major...Son of Joe and Laura Muñoz...Hobbies include listening to music and playing basketball.

GEORGE FOX: GFC's No. 2 pitcher and starting right fielder...Good control...One of fastest players on team...

1995: Cascade Conference honorable mention utility player...Learned to play right field...Hit .322...Homered versus Eastern Oregon State.

ALOHA HS: Coached by Bill Love...**1994:** Team captain...All-Metro League...Played first base, third base and pitched.

GFC CAREER STATS:

Pitching

Year	GP	GS	GC	IP	W	L	S	H	R	ER	BB	K's	SH	ERA
1995	9	9	0	52.66	2	4	0	82	44	39	12	20	0	6.72

Hitting

Year	GP	AB	R	H	2B	3B	HR	RBI	BA	SB/SBA	BB	SO	E
1995	38	149	18	48	6	0	1	14	.322	9/10	10	13	2

Craig Oliver



5

Infielder, Junior, 5-9, 165
Bats: Right/Throws: Right
Hometown: Seattle, Wash.
(Shorecrest HS – '93)

PERSONAL: Born 9/6/74...Business and economics/communications arts major...Son of Ken and Bonnie Oliver...High school letterwinner in tennis...Hobbies include mountain biking, music, backpacking, skiing, sports, business investments, hanging out with friends, family and dog.

GEORGE FOX: Was expected to be starting third baseman before broke arm in preseason.

YAKIMA VALLEY CC: Coached by Bob Garretson...**1995:** Played third base... .301 batting average...**1994:** Second Team All-Northwest Athletic Association of Community Colleges... .369 batting average.

SHORECREST HS: Coached by Stan Taloff...**1993:** First-team all-state third base...First-team all-Wesco League at third base...Team captain...Voted best defense by team members...**1992:** All-area first-team third base...Second-team all-Wesco League third base...Voted best defense by team members.

Troy Schrenk



14

Pitcher, Junior, 5-10, 170
Bats: Right/Throws: Left
Hometown: Aurora, Ore.
(North Marion HS – '92)

PERSONAL: Born 6/23/74...Sociology major...Son of Ron and Linda Shrenk...High school letterwinner in football and basketball...Hobbies include fly fishing, camping, water skiing, and snow skiing.

GEORGE FOX: GFC's No. 1 pitcher...Bailey calls him a "bulldog" on the mound...Very competitive...**1994:** Set George Fox single-season record for most wins (8-1)...First-Team All-Cascade Conference...First-Team All-NAIA District 2 Pitcher...Led team in games started (12) and strikeouts (60).

LEWIS-CLARK STATE COLLEGE: **1995:** Coached by Ed Cheff...Medical redshirt (tendinitis).

PORTLAND STATE UNIVERSITY: **1993:** Coached by Jack Dunn...Pac-10 Player of Month

NORTH MARION HS: Coached by Randy Brack...**1992:** Class 4A second team all-state...First team all-Capital League...One of three Oregon high school seniors selected by coaches to receive Old Timers Player's Association Scholarship...Team MVP and captain...**1991:** Class 3A honorable mention all-state...First team all-Capital League...Team MVP and captain...**1990:** Class 3A honorable mention all-state...First-team all-Capital League.

GFC CAREER STATS:

Pitching

Year	GP	GS	GC	IP	W	L	S	H	R	ER	BB	K's	SH	ERA
1994	12	12	2	68.2	8	1	0	47	29	24	30	60	2	3.15

Mike Shear



4

Pitcher, Freshman, 6-0, 190
Bats: Right/Throws: Right
Hometown: Junction City, Ore.
(Junction City HS – '95)

PERSONAL: Born 5/20/77...Business and economics/education major...Son of Steven and Kathleen Shear...High school letterwinner in football and basketball...Hobbies include football, swimming, fishing, and weight lifting.

GEORGE FOX: Raw talent...Bulked up from 160 pounds to 190 in six months...One of best right-handed curve balls and sliders on team.

JUNCTION CITY HS: Coached by Cal Fagan...**1995:** Honorable mention Sky-Em League outfielder...Most inspirational player...Team captain...**1994:** Second team all-Sky-Em League outfielder...Most inspirational player...Team captain... .279 batting...**1993:** Most inspirational player...Team MVP...**1992:** Team most inspirational player...Most improved player.

Scott Spurlock



29

Outfield, Redshirt, 6-2, 205
Bats: Right/Throws: Right
Hometown: Coeur d'Alene, Idaho
(Coeur d'Alene HS – '94)

PERSONAL: Born 10/17/75...Premed major...Son of Walt and Connie Spurlock...Hobbies include skiing and white-water rafting.

GEORGE FOX: Redshirting season behind three senior outfielders...**1995:** Saw 16 games as relief outfielder.

COEUR D'ALENE HS: **1994:** Coached by Ted Paige.

GFC CAREER STATS:

Hitting

Year	GP	AB	R	H	2B	3B	HR	RBI	BA	SB/SBA	BB	SO	E
1995	16	35	3	3	0	0	0	0	.086	2/2	2	14	4

Travis Tobin



36

Pitcher, Freshman, 6-4, 190
Bats: Right/Throws: Right
Hometown: Beaverton, Ore.
(Jesuit HS – '94)

PERSONAL: Born 11/6/75...Health and human performance major...Son of Bill and Ellen Tobin...Hobbies include fishing, basketball and water-skiing.

GEORGE FOX: Unknown quantity because of injuries...Great size...**1995:** Was projected as GFC's No. 2 pitcher before early-season shoulder injury.

JESUIT HS: Coached by Tim Massey.

GFC CAREER STATS:

Pitching

Year	GP	GS	GC	IP	W	L	S	H	R	ER	BB	K's	SH	ERA
1995	1	1	0	4.66	0	1	0	2	6	1	5	0	0	1.93

Mike Thompson



33

Outfield, Senior, 5-11, 180
Bats: Left/Throws: Right
Hometown: Bellevue, Wash.
(Sammamish HS – '90)

PERSONAL: Born 4/22/71...Fitness management major...
Son of Eric and Donna Thompson...Hobbies include fishing.

GEORGE FOX: Team spark plug...Above average speed...
Excellent baserunner...Firey competitor...Great work ethic
...Ranks in GFC top 10 in hits, runs, at bats, doubles,
triples, home runs, RBI, stolen bases, strikeouts and
walks...Team captain...**1995:** Medical redshirt (back
injury)...**1994:** NAIA All-American honorable
mention...First team all-Far West Region...First-team all-
NAIA District 2.

EDMONDS CC: Coached by Bill Stubbs and Blair
Kubicek...**1992:** First team all-Northwest Athletic Associa-
tion of Community Colleges... .362 batting average.

SAMMAMISH HS: Coached by Doug Williams...**1990:**
First Team all-King Co. League...Team captain...Led
league with 30 stolen bases... .400 batting average...**1989:**
First team all-King Co. League.

GFC CAREER STATS:

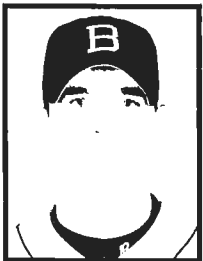
Hitting

Year	GP	AB	R	H	2B	3B	HR	RBI	BA	SB/SBA	BB	SO	E
1994	43	159	56	59	12	5	6	38	.371	14/15	28	30	1



1994 Honorable Mention All-American Mike Thompson

Mark Tyler



19

Catcher, Freshman, 6-1, 195
Bats: Right/Throws: Right
Hometown: Bothell, Wash.
(Bothell HS – '95)

PERSONAL: Born 3/18/77...Liberal arts major...Son of Dennis and Raclene Tyler...High school letterwinner in football...Hobbies include skiing.

GEORGE FOX: Outstanding contact hitter with occasional power...Backup catcher and designated hitter...Very talented.

BOTHELL HS: Coached by Brad Files...**1995:** First Team All-King Co. League catcher... .329 batting average...29 RBI, second best in league history...3 home runs, 3 triples, 8 doubles...**1994:** Second Team All-King Co. League utility player... .322 batting average...19 RBI, 3 home runs, 10 doubles, 16 stolen bases.

Cory Wilson



6

Utility, Sophomore, 5-10, 170
Bats: Left/Throws: Right
Hometown: Wilsonville, Ore.
(West Linn HS – '93)

PERSONAL: Born 1/21/75...Social studies teaching major...Son of Steve and Diane Wilson...Two-time first-team all-Three Rivers League soccer sweeper...Soccer team MVP...Played for GFC's nationally ranked soccer team.

GEORGE FOX: Rejoins former prep coach Pat Bailey...Extremely hard worker...Will see considerable playing time at third base and in outfield...Excellent hitter.

WEST LINN HS: 1993: Honorable Mention All-Three-Rivers League...Team captain...**1992:** All-Three-Rivers League Selection.

Chris Wood



29

Pitcher, Freshman, 6-3, 190
Bats: Right/Throws: Right
Hometown: Bothell, Wash.
(Bothell HS – '95)

PERSONAL: Born 3/3/77...Liberal arts major...Son of Michael and Laura Wood...High school valedictorian... High school letterwinner in soccer and basketball... Second-team all-King Co. soccer goalkeeper...Played goalkeeper for GFC's nationally ranked soccer team... Hobbies include drawing, playing the trombone, and collecting Disney art.

GEORGE FOX: Has potential for future...Comes with little experience...Shows improvement.

BOTHELL HS: Played varsity soccer during baseball season...Played American Legion baseball.

Nathan White



34

Outfielder, Sophomore, 6-1, 195
Bats: Right/Throws: Right
Hometown: Walla Walla, Wash.
(Walla Walla HS – '93)

PERSONAL: Born 6/5/75...Chemistry major...Son of Larry and Carolee White...High school letterwinner in football and wrestling...Hobbies include waterskiing.

GEORGE FOX: Fourth outfielder...Consummate team player..."Every program needs a Nathan White," says coach Bailey...**1995:** Injured...**1994:** Redshirted

WALLA WALLA HS: Coached by Scott Tibbling...**1993:** Played outfield.



George Fox occasionally enlists the help of Precision Helicopters Inc. of Newberg to keep its fields dry and playable.

Northwest Conference of Independent Colleges Opponents

Lewis & Clark College "Pioneers"

Location: Portland, Oregon
Enrollment: 1,800 **1995 Record:** 22-14
Affiliation: NAIA/NCAA III
 Northwest Conference of Independent Colleges
Head Coach: Jerry Gatto (Univ. of Portland '61)
Record at School: 309-224-2 (15 years)
SID: Tony Fowler, 503/768-7067 **Fax:** 503/768-7058
Field: Huston Sports Complex (300)



Linfield College "Wildcats"

Location: McMinnville, Oregon
Enrollment: 2,220 **1995 Record:** 25-13-1
Affiliation: NAIA/NCAA III
 Northwest Conference of Independent Colleges
Head Coach: Scott Carnahan (Linfield '73)
Record at School: 260-206-1 (12 years)
SID: Kelly Bird, 503/434-2439 **Fax:** 503/472-9528
Field: Jim Wright Stadium (860)



Whitman College "Missionaries"

Location: Walla Walla, Wash.
Enrollment: 1,350 **1995 Record:** 7-23
Affiliation: NAIA/NCAA III
 Northwest Conference of Independent Colleges
Head Coach: Jon Edwards (Willamette '68)
Record at School: First year
SID: Dave Holden, 509/527-5902 **Fax:** 509/527-4963
Field: Borleske Stadium (1,500)



Whitworth College "Pirates"

Location: Spokane, Wash.
Enrollment: 1,500 **1995 Record:** 19-16-1
Affiliation: NAIA/NCAA III
 Northwest Conference of Independent Colleges
Head Coach: Rod Taylor (Whitworth '91)
Record at School: 28-45-1 (2 years)
SID: Steve Flegel, 509/466-3239 **Fax:** 509/466-3720
Field: Merkel Field (250)



Pacific University "Boxers"

Location: Forest Grove, Oregon
Enrollment: 1,725 **1995 Record:** 18-15
Affiliation: NAIA/NCAA III
 Northwest Conference of Independent Colleges
Head Coach: Greg Bradley (Oregon State '75)
Record at School: First year
SID: Bob Kickner, 503/357-6151 **Fax:** 503/359-2209
Field: Lincoln Park (1,000)



Willamette University "Bearcats"

Location: Salem, Oregon 97301
Enrollment: 1,701 **1995 Record:** 15-22-1
Affiliation: NAIA/NCAA III
 Northwest Conference of Independent Colleges
Head Coach: David Wong (Willamette '85)
Record at School: 98-95-3 (5 years)
SID: Cliff Voliva 503/370-6110 **Fax:** 503/370-6153
Field: John Lewis Field (1,200)



University of Puget Sound "Loggers"

Location: Tacoma, Washington
Enrollment: 2,700 **1995 Record:** 7-23
Affiliation: NAIA/NCAA III
 Northwest Conference of Independent Colleges
 (Member in 1996-97)
Head Coach: Ken Garland (Willamette '81)
SID: Robin Hamilton, 206/756-3141 **Fax:** 206/756-3634
Record at School: First year
Field: Burns Field



Pacific Lutheran University "Lutes"

Location: Tacoma, Washington
Enrollment: 3,500 **1995 Record:** 23-13
Affiliation: NAIA/NCAA III
 Northwest Conference of Independent Colleges
Head Coach: Larry Marshall (Wash. St. '74)
Record at School: 191-230
SID: Nick Dawson, 206/535-7356 **Fax:** 206/535-7584
Field: PLU Field (400)



Non-Conference Opponents

Central Washington University "Wildcats"

Location: Ellensburg, Washington
Enrollment: 6,000
Affiliation: NAIA
1995 Record: 21-20
Head Coach: Desi Storey
Record at School: 68-80
Baseball SID: Bob Guptill, 509/963-1914
Fax: (509) 963-2351
Field: Tomlinson Field (700)

Eastern Oregon State College "Mountaineers"

Location: La Grande, Oregon
Enrollment: 1,800
Affiliation: NAIA, Cascade Conference
1995 Record: 21-21-1
Head Coach: Rob Cushman (Puget Sound '78)
Record at School: 126-207-1 (8 years)
SID: Dave Girrard, 503/962-3732
Fax: 503/962-3577
Field: Snowflake Field (200)

Oregon State University "Beavers"

Location: Corvallis, Oregon
Enrollment: 15,300
Affiliation: NCAA I, Pac-10
1995 Record: 25-24-1
Head Coach: Pat Casey
Record at School: 25-24-1
Baseball SID: Steve Fenk, 503/737-3720
Fax: 503/737-3072
Field: Coleman Field (3,000)

University of Washington "Huskies"

Location: Seattle, Washington
Enrollment: 33,238
Affiliation: NCAA I, Pac-10
1995 Record: 24-30
Head Coach: Ken Knutson
Record at School: 109-67 (3 Years)
Baseball SID: Jim Daves, 206/543-2230
Fax: 206/543-5000
Field: Graves Field (1,500)

Western Baptist College "Warriors"

Location: Salem, Oregon
Enrollment: 700
Affiliation: NAIA, Cascade Conference
1995 Record: 5-35
Head Coach: Denny Rasmussen (Biola '70)
Record at School: 40-291 (7 years)
SID: Tim Smith, 503/375-7021
Fax: 503/585-4316
Field: Chemeketa Community College (300)

Western Oregon State College "Wolves"

Location: Monmouth, Oregon
Enrollment: 3,910
Affiliation: NAIA, Cascade Conference
1995 Record: 33-13
Head Coach: Terry Baumgartner (WOSC '93)
Record at School: 33-13 (1 year)
SID: Tim Clodjeaux, 503/838-8308
Fax: 503/838-8164
Field: Western Oregon Field (750)

George Fox Single-Season Records

INDIVIDUAL BATTING

Batting Avg. (50 AB min.)

.537	Mick Gwilym	1971
.500	Kelly Champ	1976
.434	Miguel Rivera	1990
.426	Miguel Rivera	1989
.426	Keven Bottenfield	1986
.412	Aaron Knotts	1994
.410	Keven Bottenfield	1985
.403	Chris Wakeland	1994
.402	Fernando Pol	1992
.401	Tony Robertson	1993

At Bats

184	Mike Nadeau	1994
176	Adam Kershaw	1994
170	Aaron Knotts	1994
170	Ryan Corey	1995
167	Marty Beyers	1995
164	Tony Iranshad	1995
160	Gary Boyer	1991
160	Kevin Watson	1994
158	Tony Spencer	1992
159	Mike Thompson	1994

Hits

70	Aaron Knotts	1994
67	Mike Nadeau	1994
63	Marty Beyers	1995
59	Mike Thompson	1994
58	Mike Nadeau	1993
58	Chris Wakeland	1994
55	Tony Robertson	1993
53	Fernando Pol	1992
53	Adam Kershaw	1994
52	Gary Boyer	1991

Games

47	Tony Spencer	1992
45	Matt Capka	1992
45	Sean Bahrt	1992
45	Gary Boyer	1991
44	10 Players	

Runs

59	Mike Nadeau	1993
56	Mike Thompson	1994
54	Mike Nadeau	1994

46	Aaron Knotts	1994
44	Marty Beyers	1995
43	Gary Boyer	1991
40	Dan Stupur	1989
40	Mike Nadeau	1992
40	Chris Wakeland	1994
38	Miguel Rivera	1989

Doubles

20	Gary Boyer	1991
16	Keven Bottenfield	1985
15	Aaron Knotts	1994
13	Joe Gordon	1995
14	Dan Stupur	1989
14	Chris Wakeland	1994
13	Brandon Crosier	1992
12	Matt Capka	1993
12	Mike Thompson	1994
12	Ryan Corey	1995

Triples

8	Chris Wakeland	1994
5	Mike Thompson	1994
4	Dan Stupur	1989
4	Mike Nadeau	1994
3	Dave Morgan	1971
3	Wade Witherspoon	1981
3	Matt Capka	1993
3	Adam Kershaw	1994
3	Ryan Corey	1995

Home Runs

12	Fernando Pol	1992
10	Kevin Watson	1994
8	Ryan Corey	1995
8	Aaron Knotts	1994
7	Gayle Beebe	1981
7	Phil Marchant	1988
7	Kevin Kvarnstrom	1990
7	Josh Gilbert	1993
7	Joe Gordon	1995
6	Keven Bottenfield	1986
6	Frank Wakayama	1988
6	Dan Stupur	1989
6	Mike Thompson	1994
6	Adam Kershaw	1994



Fernando Pol

RBIs

51	Fernando Pol	1992
50	Dan Stupur	1989
49	Kevin Watson	1994
48	Josh Gilbert	1993
47	Chris Wakeland	1994
46	Aaron Knotts	1994
46	Adam Kershaw	1994
40	Kevin Kvarnstrom	1991
38	Mike Thompson	1994
37	Mike Nadeau	1993

Stolen Bases

28	Mike Nadeau	1994
25	John Votaw	1982
19	Mike Nadeau	1993
16	Mike Nadeau	1992
16	Miguel Rivera	1989
15	John Votaw	1984
15	Dan Stupur	1989
14	Mike Thompson	1994
10	Gary Boyer	1990
10	Tony Robertson	1993

Strikeouts

42	Jeff Janosky	1995
40	Rob Hoover	1995
30	Mike Thompson	1994
28	Ryan Corey	1995
27	Ryan Corey	1994
27	Aaron Jaramello	1995
26	Joe Gordon	1995
25	Adam Kershaw	1994
24	Tony Downs	1990
24	Josh Gilbert	1993
24	Kevin Watson	1994

Base on Balls

40	Chris Wakeland	1994
35	Jeff Jaramello	1995
32	Jeff Janosky	1995
31	Kevin Goodman	1989
29	Hector Velez	1988
29	Adam Kershaw	1994
28	Fernando Pol	1992
28	Davin Miyamura	1993
28	Mike Thompson	1994
26	Miguel Rivera	1989
26	Fernando Pol	1993

TEAM BATTING

Batting Avg.	.337	1975
Hits	495	1994
Runs	397	1994
Doubles	100	1994
Triples	30	1994
HRs	45	1994
RBI	373	1994
Stolen Bases	73	1994
At Bats	1,502	1994

Season Batting Averages

1995	.279	1989	.330
1994	.330	1988	.306
1993	.313	1987	.305
1992	.306	1986	.290
1991	.303	1985	.296
1990	.306	1984	.257

R E C O R D S

INDIVIDUAL PITCHING

Innings Pitched

86.33	Clark Anderson	1993
78.67	Greg Mozel	1985
76.67	Danny Graham	1995
73.33	Rob Gehrke	1992
73.33	John Nichols	1989
70.67	Rod Jackson	1988
70.33	Jeremy Greene	1994
69.00	Chris Anderson	1986
68.67	Troy Schrenk	1994
68.33	Nate Fast	1995

Games

17	Vincent DeJoia	1991
17	Will Clark	1995
16	Tom Bohlman	1992
16	J.R. Cock	1991
16	Kevin Lucke	1987
16	Clark Anderson	1993
16	Tom Bohlman	1993
16	Mark Andersen	1994
15	Scott Johnson	1985
15	Rod Jackson	1988
15	Kevin Calaba	1995

Wins

8	Troy Schrenk	1994
7	Jeremy Greene	1994
6	Kevin Lucke	1988
6	John Nichols	1989
6	Rob Oliver	1990
6	Clark Anderson	1992
6	Clark Anderson	1993
5	Eight players	

Strikeouts

65	John Nichols	1989
60	Rob Gehrke	1992
60	Troy Schrenk	1994
52	Rob Gehrke	1993
49	Jeremy Greene	1994
44	Kevin Calaba	1995
43	Rob Oliver	1991
43	Ed McClellan	1991
43	Rod Jackson	1988
42	Todd Miller	1984

ERA (Min. 30 IP)

0.89	Dave Scarth	1981
2.05	Jeremy Greene	1994
2.54	Dave Callaghan	1981
2.56	Tom Evans	1981
2.83	Will Clark	1995
3.02	Rob Oliver	1991
3.11	Jason Williams	1991
3.13	Clark Anderson	1993
3.15	Troy Schrenk	1994
3.18	Jason Williams	1992



Tom Bohlman

Complete Games

6	Kevin Lucke	1988
6	John Nichols	1989
6	Rob Gehrke	1992
6	Clark Anderson	1993
6	Rob Gehrke	1993
6	Jeremy Greene	1994
4	Rob Oliver	1991
4	Ed McClellan	1991

Saves

4	Tom Bohlman	1993
2	Vincent DeJoia	1991

TEAM PITCHING

GP	47	1992
IP	369	1992
ERA	3.44	1992
SO	254	1991
SHO	8	1992
Fewest BB per 9 inn.	3.46	1992

Earned Run Average

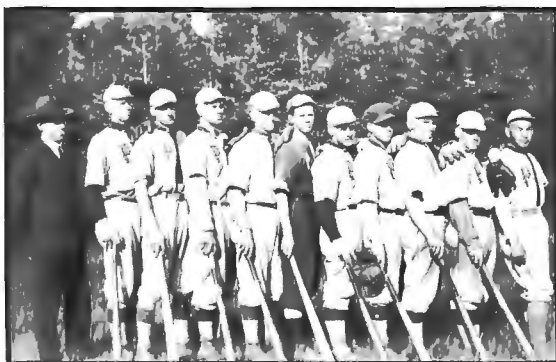
1995	5.83	1989	4.43
1994	4.12	1988	4.96
1993	4.24	1987	6.51
1992	3.44	1986	5.82
1991	3.98	1985	6.79
1990	4.67	1984	7.79

Strikeouts per 9 innings (30-inning min.)

10.53	Mark Andersen	1994
7.98	John Nichols	1989
7.92	Troy Schrenk	1994
7.39	Rob Gehrke	1992
7.30	Rob Gehrke	1993
7.13	Vincent DeJoia	1991
6.67	Ed McClellan	1991
6.51	Rob Oliver	1991
6.42	Kevin Calaba	1995
6.29	Jeremy Greene	1991

Walks per 9 innings (30-inning min.)

2.20	Clark Anderson	1993
2.34	John Nichols	1989
2.67	Clark Anderson	1992
3.01	Kevin Lucke	1988
3.18	Rob Oliver	1991
3.30	Vincent DeJoia	1992
3.52	Jason Williams	1992
3.94	Rod Jackson	1989
3.94	Phil Lyman	1994
4.24	Jason Stanley	1993



1921 George Fox baseball team.
(formerly Pacific College)



Accolades

Keven Bottenfield	C	NAIA District 2 First Team	1985, '86
		All-Independent League	1985
		Timber-Prairie League First Team	1986
Gene Christian	L	NAIA District 2 Second Team	1985
		All-Independent League	1985
Dean Boening	OF	NAIA District 2 Second Team	1985
		All-Independent League	1985
David Chambers	OF	All-Independent League	1985
Mike Williams	OF	All-Independent League	1985
		Timber-Prairie League Second Team	1986
Matt Nosack	IF	Timber-Prairie League Hon. Ment.	1986
Marce Sellas	OF	Timber-Prairie League Hon. Ment.	1986
		Independent League First Team	1987
Chris Anderson	P	Timber-Prairie League Hon. Ment.	1986
Hector Velez	IF	Timber-Prairie League Hon. Ment.	1986
		Independent League First Team	1987
Rudy Barcarse	DH	Independent League First Team	1987
Kevin Lucke	P	Independent League Second Team	1987
	P	Metro-Valley First Team	1988
Dave McKinney	U	Independent League Second Team	1987
		Metro-Valley Second Team	1988
Miguel Rivera	IF	NAIA District 2 First Team	1988, '89, '90, '91
		Metro-Valley League First Team	1988, '89, '90, '91
		Metro-Valley Player of the Year	1990, '91
		NAIA All-American Hon. Ment.	1989
Frank Wakayama	OF	NAIA District 2 First Team	1988, '90
		Metro-Valley League First Team	1988, '90
Scott Rader	P	Metro-Valley League First Team	1988
	OF	Metro-Valley League First Team	1990
Fernando Pol	OF	Metro-Valley League Second Team	1988
	DH	Metro-Valley League First Team	1991, '92
		NAIA District 2 Hon. Ment.	1991
		NAIA District 2 First Team	1992
		Metro-Valley Player of the Year	1992
Darryl Brown	P	Metro-Valley League First Team	1989
Dan Stupor	IF	NAIA District 2 First Team	1989
Steve Lampkin	C	Metro-Valley League First Team	1989, '90, '91, '92
		NAIA District 2 Honorable Ment.	1992
Kevin Goodman	IF	Metro-Valley League First Team	1989, '90
Dino Fiarito	U	Metro-Valley League First Team	1989, '91
		NAIA District 2 Honorable Ment.	1991
Chris Berg	P	Metro-Valley League Second Team	1989
Gary Boyer	OF	NAIA District 2 First Team	1990, '91
		Metro-Valley League First Team	1990, '91
Ed McClellan	P	Metro-Valley League First Team	1990, '91
		NAIA District 2 Honorable Ment.	1991
Rob Oliver	P	Metro-Valley League First Team	1990, '91
		NAIA District 2 Honorable Ment.	1991
Kevin Kvarnstrom	IF	Metro-Valley League First Team	1990, '91
		NAIA District 2 Honorable Ment.	1991
Matt Capka	IF	NAIA District 2 Honorable Ment.	1991, '92
		Metro-Valley League First Team	1991, '92
		NAIA National Player of the Week	5/3-8/'93
Sean Bahrt	OF	NAIA District 2 Honorable Ment.	1991, '92
		Metro-Valley League First Team	1991, '92
Steve Mills	P	Metro-Valley League First Team	1991
Jim Richardson	IF	Metro-Valley League Hon. Ment.	1991

1989 All-American Miguel Rivera

Jason Williams	P	Metro-Valley League Hon. Ment.	1991
		NAIA District 2 Honorable Ment.	1992
		Metro-Valley League First Team	1992
Mike Nadeau	IF	NAIA District 2 Honorable Ment.	1992
		Metro-Valley League First Team	1992
		NAIA District 2 First Team	1993, '94
		Cascade League First Team	1993, '94
		NAIA District 2 Player of the Year	1994
		Cascade Conference Co-Player of the Year	1994
Brandon Crosier	OF	NAIA District 2 Honorable Ment.	1992
		Metro-Valley League First Team	1992
		Cascade League Honorable Ment.	1993
Tony Spencer	OF	NAIA District 2 Honorable Ment.	1992
		Metro-Valley League First Team	1992
Clark Anderson	P	NAIA District 2 Honorable Ment.	1992, '93
		Metro-Valley League First Team	1992
		Cascade League Honorable Ment.	1993
Rob Gehrke	P	NAIA District 2 Honorable Ment.	1992
		Metro-Valley League First Team	1992
Tom Bohlman	P	NAIA District 2 Honorable Ment.	1992
		Metro-Valley League First Team	1992
Gage Campbell	DH	Metro-Valley League Second Team	1992
Vincent DeJoia	P	Metro-Valley League Second Team	1992
Brent Gruber	P	Metro-Valley League Second Team	1992
Darrell Dirks	P	Metro-Valley League Hon. Ment.	1992
Josh Gilbert	IF	NAIA District 2 First Team	1993
		Cascade League First Team	1993
Tony Robertson	DH	NAIA All-American Hon. Ment.	1993
		NAIA District 2 First Team	1993
		Cascade League First Team	1993
Aaron Knotts	IF	NAIA District 2 First Team	1994
		Cascade Conference First Team	1994
Adam Kershaw	IF	NAIA District 2 First Team	1994
		Cascade Conference First Team	1994
Chris Wakeland	OF	NAIA District 2 First Team	1994
		Cascade Conference First Team	1994
Michael Thompson	OF	NAIA All-American Hon. Ment.	1994
		NAIA All-Far West Region	1994
		NAIA District 2 First Team	1994
		Cascade Conference First Team	1994
Jeremy Greene	P	NAIA District 2 First Team	1994
		Cascade Conference Pitcher of the Year	1994
		Cascade Conference First Team	1994
Troy Schrenk	P	NAIA District 2 First Team	1994
		Cascade Conference First Team	1994
Ryan Corey	C	Cascade Conference First Team	1994
		Cascade Conference Hon. Ment.	1995
Kevin Watson	OF	Cascade Conference Hon. Ment.	1994
Mark Andersen	P	Cascade Conference Hon. Ment.	1994
Phil Lyman	P	Cascade Conference Hon. Ment.	1994
Tony Iranshad	IF	Cascade Conference Hon. Ment.	1995
Ryan Muñoz	U	Cascade Conference Hon. Ment.	1995
Marty Beyers	IF	Cascade Conference Hon. Ment.	1995
Danny Graham	P	Cascade Conference Hon. Ment.	1995

HISTORY

1995 GFC Season Game-By-Game Results

DATE		W/L	SCORE
2-16	%	L	GFC 1, CSU, Chico 8
2-17	%	L	GFC 0, Western Oregon 7
2-25		W	GFC 9, Willamette 3
2-25		L	GFC 4, Willamette 7
2-28		L	GFC 0, Oregon State 4
3-9	=	L	GFC 2, Lewis-Clark State 7
3-10	=	L	GFC 5, Mayville State 9
3-11	=	L	GFC 4, Linfield 8
3-11	=	L	GFC 3, Albertson 13
3-15		L	GFC 2, Portland State 6
3-16		L	GFC 4, Pacific 10
3-23		L	GFC 7, Lewis & Clark 12
3-24		L	GFC 4, Central Washington 13
3-25		W	GFC 10, Central Washington 5
3-25		L	GFC 3, Central Washington 4
3-28		L	GFC 4, Lewis & Clark 9
3-30	*	W	GFC 9, Western Baptist 0
3-30	*	W	GFC 8, Western Baptist 2
4-1	*	W	GFC 10, Western Baptist 2
4-1	*	W	GFC 11, Western Baptist 2
4-9	*	W	GFC 5, Eastern Oregon 4
4-10	*	W	GFC 15, Eastern Oregon 13
4-11	*	L	GFC 4, Eastern Oregon 11
4-12		L	GFC 7, Linfield 14
4-14	*	L	GFC 4, Northwest Nazarene 7
4-14	*	W	GFC 10, Northwest Nazarene 2
4-15	*	W	GFC 15, Northwest Nazarene 7
4-15	*	W	GFC 9, Northwest Nazarene 5
4-21	*	W	GFC 6, Concordia 1
4-21	*	L	GFC 2, Concordia 5
4-22	*	W	GFC 7, Concordia 1
4-22	*	W	GFC 5, Concordia 4
5-2	*	L	GFC 2, Western Oregon 3
5-2	*	L	GFC 2, Western Oregon 8
5-3	*	L	GFC 0, Western Oregon 5
5-3	*	L	GFC 1, Western Oregon 7
5-5		L	GFC 4, Lewis-Clark State 10
5-6		L	GFC 1, Lewis-Clark State 7
5-6		L	GFC 8, Lewis-Clark State 16
5-10		L	GFC 10, Linfield 11
5-12	*	L	GFC 2, Albertson 6
5-12	*	L	GFC 5, Albertson 8
5-13	*	L	GFC 3, Albertson 5
5-13	*	W	GFC 3, Albertson 1

%Chico State Tournament
 =Lewis-Clark State Tournament
 *Cascade Conference game
Home Game

TEAM RECORDS

Year	Record	Coach
1995	15-29	Jeff Hollamon
1994	31-13	Pat Casey
1993	26-16-1	Pat Casey
1992	29-18	Pat Casey
1991	24-21	Pat Casey
1990	24-17	Pat Casey
1989	22-14	Pat Casey
1988	15-14	Pat Casey
1987	7-13-1	Paul Berry
1986	5-23	Paul Berry
1985	14-19	Paul Berry
1984	2-22	W. Witherspoon
1983	3-24	W. Witherspoon
1982	5-25	Ed Fields
1981	11-31	Larry LaBounty
1980	10-19	Larry LaBounty
1979	6-28	Craig Taylor
1978	10-19	Craig Taylor
1977	7-19	Craig Taylor
1976	10-13	Craig Taylor
1975	7-7	Craig Taylor
1974	8-4	Craig Taylor
1973	3-11	Bob Brown
1972	13-8	Bob Brown
1971	10-11	Bob Brown
1970	N/A	Jerry Louthan
1969	0-19	David Berg
1968	4-12	Terry Haskell
1967	4-12	Terry Haskell
1966	1-16	Terry Haskell
1965	4-6	Terry Haskell
1964	0-10	Terry Haskell
1963	4-4	Nigel Shockey
1961	2-6	Carl Carpenter
1960	3-3	Carl Carpenter
1959	N/A	Carl Carpenter
1958	6-4	Carl Carpenter
1957	5-12	Ralph Beebe
1956	3-9	Ralph Beebe
1955	1-7	Barney McGrath

GEORGE FOX MOST VALUABLE PLAYERS

1995	Not Given
1994	Mike Nadeau
1993	Mike Nadeau
1992	Fernando Pol
1991	Miguel Rivera and Gary Boyer
1990	Miguel Rivera and Gary Boyer
1989	Dan Stupur and Miguel Rivera
1988	Frank Wakayama
1987	Marce Sellas
1986	Keven Bottenfield
1985	Keven Bottenfield
1984	John Votaw
1983	Tom Evans
1982	Dave Case
1981	Gayle Beebe
1980	Steve Hilgendorf

CURTIS AND MARGARET MORSE COMPLEX

George Fox College baseball, soccer and softball teams have played home games on the Curtis and Margaret Morse Athletic Complex since 1989.

Across from Wheeler Sports Center on Fulton Street and Villa Road, the complex was renovated using a donation from Curtis and Margaret Morse. Using labor from Volunteers on Wheels, new dugouts and a press box were constructed for the baseball field.

The Morse family has a long association with George Fox. Four generations have attended the Newberg college.

The baseball diamond was moved to the current location in the early '80s when construction on Bauman

Auditorium displaced the old field.

The baseball facility continues to improve. In 1991, Smurfit Newsprint Corp., Newberg, donated all lumber for an indoor hitting facility located in the northwest corner of the complex.

The baseball Bruins have been tough to beat at Morse Field. Between 1991 and 1994, George Fox lost just twice in Newberg to an NAIA opponent.

Field dimensions are 335 feet down the left-field line, 375 in the left-center-field alley, 400 to straight-away center, 370 in right center and 330 down the right-field line.

MEDIA INFORMATION

The George Fox College Sports Information Office always is interested in assisting members of the media in their coverage of Bruin baseball. Publicity and media information for the George Fox baseball team are handled by Sports Information Director Rob Felton.

Photographs, feature ideas and statistics are available from the Sports Information Office, located in the President's Office on the corner of River and Sheridan streets. For interviews, contact Felton at 503/538-8383 ext. 2127.

GEORGE FOX RECORDS AT MORSE FIELD

1995	6-10
1994	12-0
1993	7-1
1992	13-5
1991	11-3
1990	7-2
1989	12-3

NEWS MEDIA

PRINT MEDIA

The Oregonian
Portland
Dennis Peck
Ryan Peck
Justin Hagey
Fax: 503/221-8168
1-800-452-1420
Statesman-Journal
Salem
Roy Gault
Capi Lynn
Fax: 503/399-6706
1-800-556-3975
The Graphic
Newberg
Chris Clair
Fax: 503/538-1632
503/538-2181

WIRE SERVICE

Associated Press
Fax: 503/228-5514
1-800-448-3501

TELEVISION

KATU
(ABC, Ch. 2)
503/231-4263
KGW
(NBC, Ch. 8)
503/226-5119
KOIN
(CBS, Ch. 6)
503/464-0640
KPTV
(Independent, Ch. 12)
503/230-1200

RADIO

KEX
(1190 AM)
503/225-1190
KFXX
(1520 AM)
503/223-1441
KLYC
(1260 AM)
503/472-1260

BRUINS IN THE PROS

Year	Name	Pos.	Original Organization
1994	Mike Nadeau	Inf	Baltimore Orioles
1994	Kevin Watson	OF	San Francisco Giants
1994	Mark Andersen	P	Florida Marlins
1993	Clark Anderson	P	San Francisco Giants
1992	Steve Lampkin	C	Montreal Expos
1992	John Avery	P	Atlanta Braves
1992	Scott Englehart	P	Florida Marlins
1992	Chris Berg (via UW)	P	New York Mets
1991	J.R. Cock	P	California Angels
1991	Steve Mills	P	Pocatello Pioneers
1989	Dan Stupur	Inf	Los Angeles Dodgers
1986	Keven Bottenfield	C	Montreal Expos
1980	Dave LaBounty	P	Pittsburgh Pirates

CREDITS

The 1996 George Fox baseball media guide is a production of the GFC Sports Information Office. Copy was compiled and written by Rob Felton, sports information director, with assistance from Scott Wade, student assistant. Design by Felton; layout and typesetting by Kara Thompson, publications assistant and Carrie Marsh, student assistant. Photography by Anita Cirulis, director of publications. Printing by Barclay Press, Newberg.

SCHEDULE

FEBRUARY

Thu	22	at Western Baptist (1)	2:00
Sat	24	at Western Oregon (2)	12:00

MARCH

Fri	1	Eastern Oregon (2)∅	1:00
Sat	2	Whitman (1)∅	10:00
		Pacific (1)∅	12:30
Tue	5	WESTERN OREGON (1)	3:00
Fri	8	at Oregon State (1)	3:00
Sat	9	ALUMNI GAME (1)	1:00
Tue	12	WESTERN BAPTIST (1)	3:00
Sat	16	PUGET SOUND (2)	1:00
Fri	22	CENTRAL WASHINGTON (2)+	12:00
Sat	23	at Western Oregon (2)+	12:00
Sun	24	at Willamette (2)+	12:00
Tue	26	at University of Washington (1)	2:00
Wed	27	at National Baseball Inst. (1) (E)	3:00
Sat	30	at Whitworth (2)*	1:00
Sun	31	at Whitworth (1)*	12:00

APRIL

Tue	2	WESTERN OREGON (1)	3:30
Fri	5	at Pacific Lutheran (1)*	3:00
Sat	6	at Pacific Lutheran (2)*	1:00
Sat	13	WHITMAN (2)*	1:00
Sun	14	WHITMAN (1)*	2:00
Sat	20	PACIFIC (2)*	1:00
Sun	21	at Pacific (1)*	1:00
Sat	27	at Linfield (2)*	1:00
Sun	28	LINFIELD (1)*	2:00

MAY

Sun	5	at Willamette (2)*	1:00
Mon	6	WILLAMETTE (1)*	4:00
Sat	11	LEWIS & CLARK (2)*	1:00
Sun	12	at Lewis & Clark (1)*	1:00
Tue-Sat 14-18		NAIA Regional Tournament	TBA
Fri-Thu 24-30		NAIA National Tournament, Sioux City, Iowa	TBA

Home games in bold caps. ∅At Eastern Oregon Tournament.

*Conference games. +Willamette Valley Tournament. (E)=Exhibition.

Home games played on Morse Athletic Field.

