

1997

1997 Media Guide

George Fox University Archives

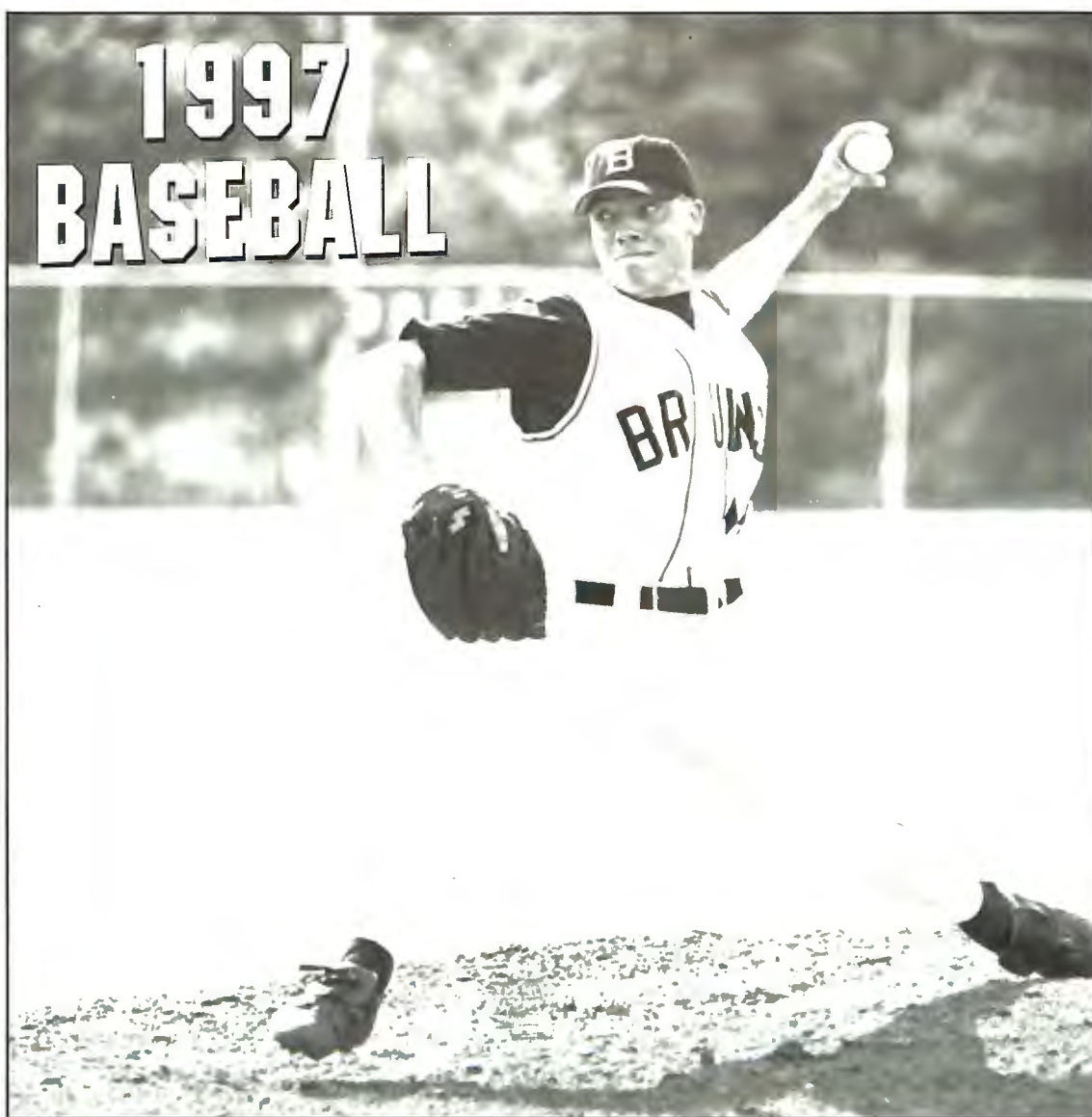
Follow this and additional works at: https://digitalcommons.georgefox.edu/athletics_baseball

Recommended Citation

George Fox University Archives, "1997 Media Guide" (1997). *Baseball*. 60.
https://digitalcommons.georgefox.edu/athletics_baseball/60

This Media Guide is brought to you for free and open access by the George Fox University Athletics at Digital Commons @ George Fox University. It has been accepted for inclusion in Baseball by an authorized administrator of Digital Commons @ George Fox University. For more information, please contact arolfe@georgefox.edu.

GEORGE FOX UNIVERSITY



GF

1 9 9 7 G E O R G E F O X B A S E B A L L R O S T E R

No.	Name	Pos.	Yr.	Ht.	Wt.	B	T	Hometown/Previous Schools
PITCHERS								
4	Mike Shear	RHP	SO	6-1	190	R	R	Junction City, Ore./Junction City
10	Alex Dobson	LHP	SR	6-1	215	R	L	Beaverton, Ore./Beaverton
13	Ryan Muñoz	RHP/OF	JR	6-1	185	L	R	Aloha, Ore./Aloha
14	Troy Schrenk	LHP	SR	5-10	170	R	L	Aurora, Ore./North Marion
16	Ken Gilmore	RHP	SO	6-0	170	R	R	Coos Bay, Ore./North Bend
18	Marcus Muñoz	RHP/1B	FR	6-4	200	R	R	Aloha, Ore./Aloha
22	Will Clark	RHP	SO	5-11	180	R	R	Albany, Ore./Santiam Christian
30	Kess Romano	RHP	FR	6-1	180	R	R	Vancouver, Wash./Mountain View
31	Ryan Alvis	RHP/OF	FR	5-10	190	R	R	Kent, Wash./Seattle Christian
33	Eric Beasley	RHP	FR	6-0	165	R	R	The Dalles, Ore./The Dalles
35	Jeremy Green	RHP	FR	6-1	185	R	R	Portland, Ore./Clackamas
36	Travis Tobin	RHP	SO	6-5	195	R	R	Beaverton, Ore./Jesuit
42	Ryan Schaefer	RHP	FR	6-0	155	R	R	Grants Pass, Ore./Grants Pass
44	Nate Barnett	LHP/1B	SO	6-2	220	L	L	Arlington, Wash./Arlington Christian
CATCHERS								
7	Rob Hoover	C	SR	6-0	195	R	R	West Linn, Ore./West Linn
15	Scott Box	C	FR	6-1	215	R	R	Redmond, Wash./Inglemoor
23	Mark Tyler	C	SO	6-0	200	R	R	Bothell, Wash./Bothell
INFIELDERS								
1	David Farrell	INF	FR	5-9	155	S	R	Seattle, Wash./Foster
2	Ben Hoffman	INF	FR	5-8	150	R	R	The Dalles, Ore./The Dalles
3	Shawn Foote	INF	JR	5-8	165	L	R	Melba, Idaho/Melba
5	Craig Oliver	INF	SR	5-9	165	R	R	Seattle, Wash./Shorecrest/Yakima Valley CC
8	Lance Gilmore	INF	SO	6-1	185	R	R	Coos Bay, Ore./North Bend
11	Sundar Cook	INF	SO	5-10	165	R	R	Kirkland, Wash./Juanita
12	Matt Unis	INF	JR	6-2	180	L	R	Milwaukie, Ore./Oregon City/College of the Desert
17	Matt Saltmarsh	INF	JR	6-3	210	L	L	Oregon City, Ore./Oregon City/College of the Desert
28	Buster Ford	INF	JR	6-0	195	R	R	Corvallis, Ore./Santiam Christian
OUTFIELDERS								
6	Jason Wieg	OF	FR	5-8	165	R	R	Seattle, Wash./Shorecrest
9	Chad Hollabaugh	OF	SO	5-11	195	L	L	Lake Oswego, Ore./Lakeridge/Linfield
20	Jason Schilperoort	OF	FR	5-11	160	R	R	Chehalis, Wash./W.F. West
21	Jason Seibel	OF	SO	6-0	180	R	L	Hillsboro, Ore./Hillsboro/Mt. Hood CC
25	David Rasmussen	OF	FR	6-2	180	R	R	Selma, Calif./Immanuel
29	Scott Spurlock	OF	SO	6-2	200	R	R	Coeur d'Alene, Idaho/Coeur d'Alene
37	John Suehisa	OF	FR	5-3	140	R	R	Wahiawa, Hawaii/Leilehua
42	Jake Proffitt	OF	FR	5-9	160	R	R	Spokane, Wash./NW Christian/Whitworth
UTILITY								
26	Nate Swan	U	FR	6-1	165	R	R	Medford, Ore./South Medford

A GUIDE TO THE GUIDE

College Information	1
George Fox Athletics	2
Athletic Affiliation	3
1996 Highlights	4
1996 Statistics	5
1997 Outlook	6-7
Baseball and Athletic Staff	8-10
Player Profiles	11-22
Opponent Information	23-24
Records/History	25-28
Miscellaneous	29

HOW TO REACH US

College Switchboard 503/538-8383 • SID Fax 503/537-3830
Athletic Dept. Fax 503/537-3864

Baseball Coach

Pat Bailey ext. 2914, Home 537-3023, pbailey@georgefox.edu

Athletics Director

Craig Taylor ext. 2911, Home 472-9694, ctaylor@georgefox.edu

Associate Athletics Director

Hal Adrian ext. 2922, Home 646-4880, hadrian@georgefox.edu

Sports Information Director

Rob Felton ext. 2127, Home 538-7722, ctaylor@georgefox.edu

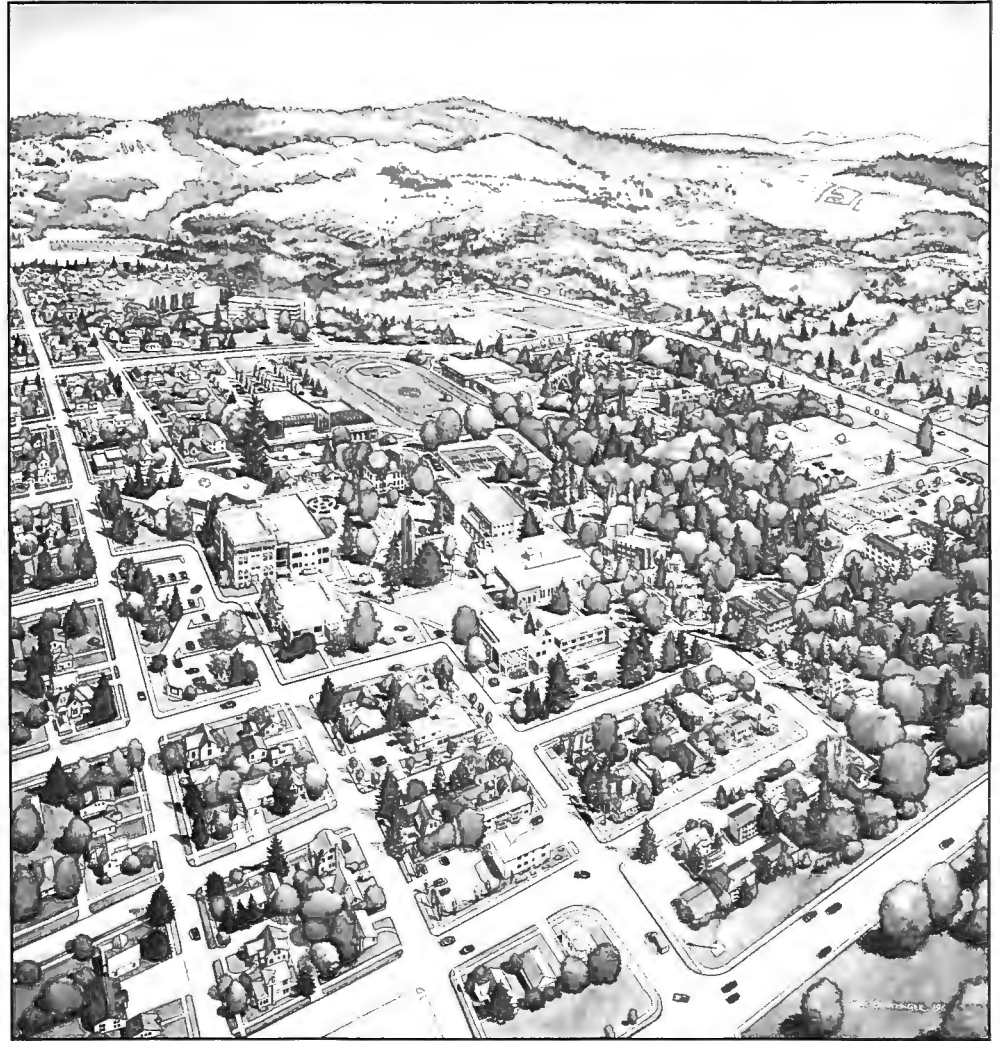
One of the nation's fastest growing universities, George Fox University has a growing reputation to match. While enrollment has quadrupled in the last decade — reaching more than 2,000 students — the University has received national attention.

George Fox repeatedly has been named by *U.S. News & World Report* as one of "America's Best Colleges," earning its highest marks in academic reputation. The national magazine also has listed the University in its "Top Teaching Schools" and "Most Efficient" categories.

Five times, George Fox was named to the Templeton Foundation's Honor Roll for Character Building Colleges.

The University offers innovative programs. Each freshman student is provided a computer to keep upon graduating. Students reaching their junior year are eligible for an international study trip for which the University pays transportation costs. Through the Coalition for Christian Colleges and Universities and the Christian College Consortium, George Fox has students studying at five affiliated campuses, ranging from Hollywood Film Studies in California to American Studies in Washington, D.C., to Middle East Studies in Cairo, Egypt.

Early Willamette Valley Quaker settlers established Friends Pacific Academy in 1885. The college division was organized in 1891 to provide more advanced instruction. In 1949, because of the many col-



An artist's rendering of the George Fox University Newberg campus.

leges in the Northwest with Pacific in their name, Pacific College was renamed George Fox College in honor of the founder of the Friends (Quaker) Church. In 1996, with the addition of Western Evangelical Seminary, George Fox became a university, offering students the choice of 35 undergraduate majors and 12 graduate degrees.

George Fox has maintained a distinctively Christian, liberal arts

mission. The University is committed to a residential campus atmosphere where students build a life plan. Education occurs whenever and wherever student experience contributes to human development — in or out of the classroom. The integration of faith, learning and living is a primary objective.

George Fox's most prominent alumnus is the late President Herbert Hoover, who attended the academy.



Jeff Nelson, 1994-95 NAIA National Goalkeeper of the Year (Intercollegiate Soccer Association of America).



College Sports magazine named George Fox basketball/track athlete Nancy Rissmiller 1995-96 NAIA national female athlete of the year.



Jill Beals (right), 13-time All-American, 1992 Hayward Award finalist, and Seattle Marathon winner.



1991-92 first-team All-American center Dave Wilson.

George Fox University maintains one of the Northwest's most successful small-college athletic programs.

The teams win. George Fox has earned district or conference titles in eight sports during the 1990s. George Fox's highest national team finish came in the fall of 1992 when the women's cross country team finished as national runner-up.

The athletes are successful. George Fox athletes have earned more than 100 NAIA All-American awards and half as many All-American Scholar-Athlete honors.

The coaches are award winners as well. Every head coach who has held his or her position for more than one year has been named district or conference Coach of the Year at least once.

Intercollegiate athletics is an integral part of the overall education program at George Fox. About 15 percent of the traditional undergraduate student body participates in varsity athletics. Men's varsity athletic teams represent the University in baseball, basketball, track, tennis, cross country and soccer. Women's teams are fielded in volley-

ball, basketball, track, tennis, softball, cross country and soccer.

Athletic facilities include the Coleman H. Wheeler Sports Center, which includes three basketball or volleyball courts and two racquetball courts. Seating is available for up to 2,000. The track and field teams

compete on Colcord Field, which received a new polyurethane surface in 1993. The Curtis and Margaret Morse Athletic Complex contains a baseball diamond, softball field and soccer field. In 1994, five tennis courts were installed in preparation for the addition of tennis as a varsity sport.

NORTHWEST CONFERENCE OF INDEPENDENT COLLEGES

George Fox University
Lewis & Clark College
Linfield College
Pacific Lutheran University
Pacific University
Seattle University*
University of Puget Sound
Whitman College
Whitworth College
Willamette University

**member in 1997-98*

ATHLETIC AFFILIATION

The landscape of small-college athletics in the Pacific Northwest is undergoing sweeping changes, and George Fox University is in the midst of the transformation.

In the fall of 1994, the University joined the Northwest Conference of Independent Colleges (NCIC), a league of 10 strong academic institutions in Oregon and Washington. That winter, the NCIC applied for membership in the National Collegiate Athletic Association (NCAA) Division III. The move meant leaving the National Association of Intercollegiate Athletics (NAIA), an association George Fox had held membership in since 1965.

George Fox and the NCIC members have provisional membership in the NCAA but will continue to compete in NAIA national championships until 1998-99, when they expect to be eligible for NCAA Division III national championships.

George Fox's men's and women's basketball teams compete in NAIA Division II, while the 11 other sports the University competes in are not divided into divisions by the NAIA.

The NAIA is an autonomous association administering programs leading to 13 men's and 11 women's



championships. The NAIA includes about 350 four-year colleges and universities in 49 states and Canada. They are grouped in nine regions and 44 conferences.

The NCAA administers 80 championships in 21 sports for its 1,201 member institutions, involving nearly 21,000 men and women scholar-athletes. There are more than 350 schools in Division III.

1997 POSTSEASON PLAY

Six teams will play in the NAIA Far West Region Tournament held May 13-17 at the site of the Golden State Athletic Conference champion.

The champions of the Northwest Conference of Independent Colleges, Cascade Collegiate Conference, Golden State Athletic Conference, and Pacific Northwest Athletic Conference each will earn an automatic berth. Two at-large berths will be awarded based upon regional rankings to remaining conference and independent teams.

The champion of the regional tournament will advance to the NAIA National Tournament held May 23-29 in Sioux City, Iowa.

GEORGE FOX POSTSEASON RESULTS

1996

NAIA Far West Regional Tournament

GF 4, Lewis-Clark State 18

GF 0, Pt. Loma Nazarene 3

1994

District 2 Championships

GF 26, Concordia 5

GF 7, Linfield 1

GF 3, Albertson College of Idaho 11

GF 9, Western Oregon 3

GF 7, Albertson College of Idaho 8 (10)

1993

District 2 Championships

GF 13, Willamette 2

GF 12, Western Oregon 8

GF 7, Linfield 6

Area 1 Championships

GF 4, Lewis-Clark State 6

GF 5, Hawaii Pacific 8

1992

District 2 Championships

GF 14, Northwest Nazarene 4

GF 13, Linfield 4

GF 5, Albertson College of Idaho 0

GF 7, Albertson College of Idaho 5

Area 1 Championships

GF 2, Lewis-Clark State 8

GF 4, Hawaii Pacific 5

1991

District 2 Championships

GF 15, Pacific 5 (8)

GF 11, Concordia 2

GF 7, College of Idaho 1

GF 3, Linfield 2

Area 1 Championships

GF 6, Whitworth 9

GF 1, Hawaii Pacific 6

1990

District 2 Championships

GF 0, Linfield 13

GF 15, Western Oregon 5

GF 6, College of Idaho 8

1989

District 2 Championships

GF 5, Oregon Tech 1

GF 5, College of Idaho 1

GF 2, Linfield 6

GF 2, College of Idaho 6

1988

District 2 Championships

GF 3, Lewis & Clark 6

GF 18, Pacific 10

GF 0, Linfield 11

New Coach Guides Bruins to Baseball Regionals

First-year coach Pat Bailey returned George Fox baseball to the top in a hurry.

The former West Linn High coach took over a team that went 15-29 last year and steered it to a 25-16 season. After a two-year absence, Bailey put the Bruins back in the regional playoffs.

The 1996 squad recorded George Fox's best start since joining the NAIA in 1965. The Bruins won their first five and were 9-3 before a mid-season slump. Injuries to relief pitchers and inexperience in the infield took their toll, and George Fox fell to 12-12.

After dropping three of its first four Northwest Conference games, a postseason appearance appeared unlikely. George Fox had yet to meet the top two teams. But the Bruins won 13 of their next 15 games and moved from sixth to second in league standings. In the final stretch, the only losses were 14-inning heartbreakers decided by one run. In its first year in the Northwest Conference, George Fox finished 14-5.

"After our first two league weekends, we really started playing good baseball," said Bailey. "We started playing better defense, and that was a real key to our consistency."

After receiving an at-large berth to the NAIA regional tournament, George Fox rode in with an eight-game win streak but exited with consecutive losses to eventual national champion Lewis-Clark State College and Point Loma Nazarene College.

Five George Fox players were



Nate Barnett was the only freshman named to the Northwest Conference first team.

honored by the Northwest Conference. Named to the first team were outfielder Jeff Janosky, a senior from Kennewick, Wash.; senior outfielder Mike Thompson of Bellevue, Wash.; third baseman Ryan Muñoz, a sophomore from Aloha, Ore.; and freshman pitcher Nate Barnett of Arlington, Wash. Catcher Ryan Corey, a senior from Hermiston, Ore., received honorable mention.

Barnett and Muñoz not only led George Fox in pitching, but were among the team's top hitters. The remarkable underclassmen each tallied seven wins on the mound, second-most ever by George Fox pitchers. Barnett's 1.29 ERA was the best by a Bruin in more than a decade. At the plate, Muñoz hit .386, leading a potent lineup that featured seven left-handed Bruin batters.

Thompson — an honorable mention All-American in 1994 — tied Mike Nadeau's 1994 school stolen-



Ryan Muñoz won seven games and hit a team-high .379 last year.

base record with 28 in 34 attempts.

George Fox defended its home turf well, going 14-1 in Newberg.

S T A T I S T I C S

1996 Season Statistics

HITTING

PLAYER	AB	R	H	2B	3B	HR	RBI	BA	OB%	SB/SBA	BB	SO	E
Barnett	121	29	44	8	1	3	36	.364	.479	2/3	22	9	1
Cook	3	1	0	0	0	0	0	.000	.250	0/0	1	1	0
Corey	141	21	38	9	1	1	31	.270	.387	1/1	20	25	4
Doman	51	9	16	5	0	0	8	.294	.382	2/3	4	8	16
Foote	31	11	3	1	0	0	1	.097	.289	4/5	6	10	2
Ford	94	21	27	4	0	0	16	.287	.382	1/4	8	8	11
Gilmore	57	5	15	3	0	0	10	.263	.286	0/0	3	8	10
Grant	0	1	0	0	0	0	0	.000	.000	0/0	0	0	0
Hoover	40	6	11	2	0	1	7	.275	.388	0/0	4	7	5
Janosky	125	47	45	11	0	8	37	.360	.542	14/16	39	24	1
Jaramillo	68	20	18	5	0	3	15	.265	.447	2/4	21	13	3
Muñoz	153	34	58	9	1	2	31	.379	.432	9/12	9	10	9
Oliver	34	5	14	1	0	0	4	.412	.444	0/0	1	1	4
Thompson	156	35	46	10	2	3	24	.295	.427	28/35	22	22	1
Tyler	75	19	25	8	1	1	19	.333	.456	3/3	13	9	6
White	8	0	3	0	0	0	3	.375	.444	0/0	1	0	0
Wilson	109	19	33	10	1	0	21	.303	.409	4/7	11	15	2
Pitching Staff	2	0	0	0	0	0	0	0	.333	0/0	1	1	1
TOTALS	1,263	283	395	86	7	22	263	.312	.427	71/94	186	171	76

PITCHING

PITCHER	GP	IP	W	L	SA	H	R	ER	BB	SO	ERA	AB
Barnett	13	76.67	7	2	0	70	30	16	21	44	1.88	332
Calaba	5	14.33	0	2	0	23	24	15	11	9	9.42	82
Clark	4	3.67	0	1	2	9	6	6	0	2	14.70	20
Dobson	15	27.67	2	0	1	34	16	8	11	18	2.60	133
Fast	16	38.67	4	1	1	46	24	20	12	21	4.65	174
Gilmore	4	2.33	0	0	0	2	2	1	1	1	3.86	13
Muñoz	15	58.33	7	2	1	68	31	17	11	34	2.62	261
Schrenk	15	77.33	4	6	2	80	49	35	27	43	4.07	332
Shear	6	17.00	1	2	0	25	23	17	13	10	9.00	96
Wood	2	2.00	0	0	0	4	0	0	2	0	0.00	11
TOTALS	95	318.00	25	16	7	361	205	135	109	182	3.82	1,454

George Fox Baseball 1997 Outlook

Three pitchers with all-conference credentials and improvements to the top hitting lineup in the Northwest Conference make George Fox University's baseball team a contender to return to the NAIA Far West Regional Tournament.

Plugging holes in the outfield and behind the plate is the first order of business for head coach Pat Bailey, who guided George Fox to a runner-up finish in the Northwest Conference in his first season. Graduation claimed the starting catcher and entire outfield from last season's 25-16 team.

The Bruins led the Northwest Conference in hitting (.312) and runs scored (6.9 a game) last season, but Bailey thinks they're even better this season.

"We won't have as much team speed as last year," said Bailey. "But now we have more overall power."

Not only does Bailey say his lineup is stronger top-to-bottom, but he has the versatility of putting as many as six left-handed hitters in the order.

"We have a really good offensive team," said Bailey. "But the ability of this team to compete for a conference championship will be determined by how well we play defense and how well our pitchers beyond our top four do."

The Bruins boast an impressive pitching rotation.

"Our first three pitchers will be as good as anybody in the conference," said Bailey.

Veteran **Troy Schrenk (Sr., North**

Marion HS, Aurora, Ore.) set the school record with eight wins as a sophomore. Last year he pitched a team-leading 77.33 innings, won four games, and earned two saves.

All-Northwest Conference selections, pitcher/first baseman **Nate Barnett (So., Arlington Christian HS, Wash.)** and pitcher/outfielder **Ryan Muñoz (Jr., Aloha HS, Ore.)** both recorded 7-2 records last season. Barnett's 1.88 ERA was best by a Bruin in 15 years.

Bailey will put Muñoz and Barnett on the field as often as possible. Both hit over .360 last season. Muñoz will bat lead-off, and Barnett will take the clean-up spot.

Pitching depth is a concern for Bailey. Besides middle reliever **Alex Dobson (Sr., Beaverton HS, Ore.)**, no one else on the staff threw more than 17 innings last year.

Two who could throw middle relief and occasionally start are **Kess Romano (Fr., Mountain View HS, Vancouver, Wash.)** and **Mike Shear (So., Junction City HS, Ore.)**.

Reliever **Will Clark (So., Santiam Christian HS, Albany, Ore.)** appeared in a school-record 17 games in 1995, but a shoulder injury forced him to miss most of last season. He and **Eric Beasley (Fr., The Dalles HS, Ore.)** will cover the late innings.

Bailey expects improvement in the infield, which was all new last season.

After returning from wrist surgery midway through the 1996 season, third baseman **Craig Oliver (Sr., Shorecrest HS, Seattle, Wash.)**

stabilized the defense and lit up opposing pitchers. He hit .444 in 34 at bats.

A 1995 Oregon Class 4A first-team all-state selection, **Lance Gilmore (So., North Bend HS, Coos Bay, Ore.)** will start at shortstop.

Buster Ford (Jr., Santiam Christian HS, Corvallis, Ore.) and **Shawn Foote (Jr., Melba HS, Idaho)** will take turns at second. Also battling for playing time at third or second is College of the Desert transfer **Matt Unis (Jr., Oregon City HS, Milwaukie, Ore.)**.

When Nate Barnett isn't pitching, Bailey has a dilemma at first base. He'd like to take advantage of the hitting of both Barnett and **Matt Saltmarsh (Jr., Oregon City HS, Ore.)**. Saltmarsh is a slugger from College of the Desert in Arizona, where he earned all-conference honors.

Although all-conference catcher Ryan Corey is gone, things won't drop off too much behind the plate. **Mark Tyler (So., Bothell HS, Wash.)** will start. He has an accurate arm and proved himself as a hitter last year, batting .333. Redshirt freshman **Scott Box (Fr., Inglemoor HS, Redmond, Wash.)**, and one of Bailey's former prep athletes, **Rob Hoover (Sr., West Linn HS, Ore.)**, will give Tyler relief. Box — who led the team in extra base hits in fall ball — also could be the designated hitter.

With honorable mention All-American Mike Thompson and all-

Northwest Conference pick Jeff Janosky, Bailey felt he had an outfield that rivaled most NCAA Division I teams. Now he's starting over.

Versatile Ryan Muñoz will move to center field when not pitching.

"We want someone there who's a fiery competitor and a bull dog," says Bailey. "Someone to take control. He's that guy."

In right field will be **Jason Seibel (So., Hillsboro HS, Ore.)**, Mt. Hood Community College's MVP and top hitter (.396) last year.

Left fielder **Chad Hollabaugh (So., Lakeridge HS, Lake Oswego, Ore.)** — a 1995 Oregon Class 4A second-team all-state outfielder — transferred in after a year at nearby Linfield College.

Other outfielders likely to earn playing time are **John Suehisa (Fr., Leilehua HS, Wahiawa, Hawaii)**, who played varsity soccer last fall, and speedy **Jason Schilperoort (Fr., W.F. West HS, Chehalis, Wash.)**.

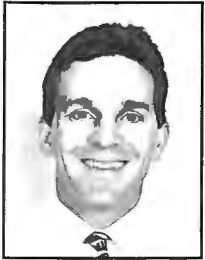
"The biggest thing we lost from

last year was the leadership of Thompson and Corey — their fiery competitiveness and desire to win," said Bailey. "We have a really nice group of guys, but we want them to know they can still be fiery and competitive."

The Bruins will use a tropical trip to Hawaii Pacific University and a tournament at Albertson College of Idaho to prepare for their Northwest Conference season, which begins March 15 at Whitworth College in Spokane, Wash.



1997 George Fox University Baseball Team (front row, from left): Ryan Shaefer, Eric Beasley, Jason Schilperoort, Jake Proffitt, Jason Wieg, Ben Hoffman, John Suehisa, David Farrell, and Sundar Cook, (second row) Troy Schrenk, Shawn Foote, Craig Oliver, Buster Ford, Chad Hollabaugh, Jason Seibel, Will Clark, Ken Gilmore, and Kess Romano, (third row) Alex Dobson, Mike Shear, Rob Hoover, Mark Tyler, Ryan Muñoz, Lance Gilmore, Nate Swan, Jeremy Green, and David Rasmussen, (back row) Billy Wark, assistant coach, Scott Spurlock, Scott Box, Nate Barnett, Matt Unix, Matt Saltmarsh, Travis Tobin, Marcus Muñoz, Geoff Loomis, assistant coach, and Pat Bailey, head coach.



PAT BAILEY

It didn't take long for Pat Bailey to transfer his winning touch to George Fox.

One year after guiding West Linn High School into the Oregon Class 4A state championship game, he guided the Bruins to the verge of a Northwest Conference title and into the NAIA Far West Regional Tournament. He turned around a team that was 15-29 the year before and helped the Bruins to a 25-16 season and a second-place conference finish. Only three teams have won more games in George Fox history.

At West Linn, his teams advanced to the Class 4A state playoffs seven times, and in his final season, were edged 2-1 in the 1995 state championship game.

Four times Bailey has been named Three Rivers League Coach of the Year. He was at West Linn for 10 years as head baseball coach and assistant football coach. His baseball teams won five league titles and reached the Oregon semifinals in 1989 and 1991. From 1989-95, his combined record as a high school and American Legion baseball coach was 315-105 (.750).

Previous to West Linn, Bailey taught and coached at Willamette High School, Eugene, Ore., for three years.

He has worked at various baseball camps and served as a pitching coach at the University of Portland in 1992.

"George Fox really matches up with me personality-wise and philosophically," says Bailey. "As a coach, I want to make sure every kid is making the most of his God-given talent. I want them to be a class act in the classroom and the community. I want the kids to match the school and my personality. I stress to my team, we're a family. Family members are more important than themselves. If you're going to be a leader, you must be a servant first."

Bailey is a 1974 graduate of Moscow High School in Idaho, where he played football, basketball and was the baseball team's MVP.

A two-year baseball letterwinner at the University of Idaho, Bailey was a starting outfielder and team captain as a senior. He completed his business education degree in 1978. Bailey also lettered two years in baseball at North Idaho College in Couer d'Alene, Idaho.

Bailey continued playing semiprofessionally until age 28.

He earned a master of education degree in educational administration from the University of Oregon in 1983.

At West Linn, Bailey was a business instructor, and in 1994, was named to Who's Who Among America's Outstanding High School Teachers. In 1995 he was one of 30 outstanding educators honored with a 1995 Education Excellence Award, given by Associated Oregon Industries.

At George Fox, Bailey is an assistant professor of health and human performance.

Bailey and his wife Susan live in Newberg with their children Alex, 13, and Ann, 10.



Pat Bailey



GEOFF LOOMIS

1992 Pacific-10 Northern Division Player of the Year Geoff Loomis is in his second year on the George Fox staff as an assistant coach.

He was the University of Portland's MVP in 1992 and was drafted by the Oakland Athletics organization. He played two seasons for the Southern Oregon Athletics and was team MVP in 1993.

A third baseman, he was a two-time first-team All-Pacific-10 Northern Division selection. His .376 career batting average set a school record at UP, as did his 80 hits, 22 doubles, and 33 extra base hits in a season.

At UP he played under Pat Bailey during Bailey's one-year stint as assistant coach.

Loomis had a stellar prep career at Oregon City High School, where he was named 1989 first team Class 4A all-state and Player of the Year in the Three-Rivers League. He had a .610 batting average and led the state with 57 RBI.

Loomis earned his bachelor's degree in marketing and management in 1994. He currently is completing a masters of arts degree in teaching at Pacific University. He and his wife Anna live in Beaverton.



BILLY WARK

Billy Wark, formerly assistant coach at Whitworth College, will coach the Bruin pitchers this season.

Wark is a 1995 graduate of Whitworth. As a junior he was named NAIA national player of the week after throwing a complete game win against No. 1-ranked Lewis-Clark State College.

Wark played American Legion baseball and was an all-state basketball and football player in Stevensville, Mont., where he graduated from high school in 1991.

He currently works in the Portland State University athletic department.

He and his wife Amy live in Portland.

JIM REICHENBACH

Former Cleveland High School and Portland State University player Jim Reichenbach will assist with George Fox's outfielders this season.

The first-year assistant coach was a two-time all-city selection at Cleveland and set the school RBI record with 53. He graduated in 1987 and played at Portland State for two seasons.

He has coaching experience at Cleveland High and with Newberg's American Legion and Babe Ruth teams.

He currently works with the JUGS pitching machine company in Tualatin. He and his wife Diane have two children, Nathaniel and Andrew. They live in Newberg.



CRAIG TAYLOR is in his ninth year as George Fox University Athletic Director, but he has been associated with the Bruins for 23 years as player, coach and professor.

Taylor, 45, came to George Fox in 1971 as a junior forward for the men's basketball team. In 1972-73, he helped the Bruins to their first-ever NAIA District 2 title.

Taylor graduated from George Fox in 1974, named both Outstanding Man in Teacher Education and Outstanding Physical Education Major. He received a master of science degree in education from Linfield College in 1975. While enrolled in graduate courses, he was a George Fox residence hall director.

From 1976 through 1979, Taylor was the Bruin baseball coach while also serving as assistant basketball coach. He worked at a sporting goods retailing firm from 1979-81.

The A.D. was the coach of the women's basketball team from 1981-93, producing a 162-155 record. He also coached George Fox softball from 1981-88 and again in 1990. His teams compiled a 77-99-1 record, and in 1985 he was named NAIA District 2 Coach of the Year.

At George Fox, the athletic director is responsible for athletic department functions, including eligibility and compliance with George Fox, conference, NAIA and NCAA regulations, budgeting, and department and sports center management.

Taylor has three children: Leah, 22, Bree, 17, and Casey, 7.

Taylor and his wife Kathy live in McMinnville.



HAL ADRIAN became Associate Director of Athletics at George Fox in 1994. In that position, he is responsible for the Bruin Club and general fund raising, as well as special projects including the George Fox Sports Hall of Fame and sports banquet.

A 1956 graduate of Lewis & Clark College, Adrian taught and coached in the Beaverton School District until 1961, when he joined North Pacific Insurance. In 1994 he retired as Vice President of Human Resources. For 40 years he has been involved in church music leadership, chairing the 1992 Billy Graham Crusade music committee. Adrian also has been active in United Way leadership.

He and his wife Audrey have three sons: Jay, Greg, and Dave, who currently is George Fox's Vice President for Development.



ROB FELTON is in his fifth year as Sports Information Director for George Fox's 13 athletic teams. A 1992 George Fox graduate with a degree in communication arts, Felton was a sports information student assistant for three years.

The George Fox Sports Information Office has produced 34 national award-winning publications in the last 15 years. Most recently, the 1995-96 men's and women's basketball media guides each earned top-10 finishes in a national contest sponsored by the College Sports Information Directors of America.

Felton, 26, also has additional responsibilities as Assistant Director of Public Information. In 1997, he received a "Rising Star" award in the field of communications from Council for Advancement and Support of Education (CASE) District VIII.

A *magna cum laude* graduate, he was named Outstanding Student in Communication Arts and to "Who's Who Among Students in American Colleges and Universities." He was sports editor for the student newspaper, The Crescent, for two years and editor as a sophomore.

Ryan Alvis

31

Pitcher/Outfield, Fresh., 5-10, 190

Bats: Right/Throws: Right

Hometown: Kent, Wash.

(Seattle Christian HS - '96)

PERSONAL: Born 8/3/77...Liberal arts major...Son of David and Barbara Alvis...Senatorial nomination to U.S. Service Academy...Community News Athlete of the Year...High school letterwinner in football and basketball...Hobbies include cliff jumping, extreme skiing, and basketball.

GEORGE FOX: Talented, but still learning the game.

SEATTLE CHRISTIAN: Coached by Walter Heilig...

1996: Team captain...Nisqually League first-team catcher...Nisqually League first-team pitcher...Received "Mighty in Spirit" and "Best All-Around" awards by vote of teammates...Nisqually League MVP runner-up...**1995:** Nisqually League first-team catcher...Team captain...Received "Mighty in Spirit" and "Best All-Around" awards by vote of teammates...Golden Glove Infield...**1994:** Team captain...**1993:** Nisqually League honorable mention catcher...Golden Glove Infield.

Nate Barnett



44

Pitcher/Infield, Soph., 6-2, 220

Bats: Left/Throws: Left

Hometown: Arlington, Wash.

(Arlington Christian HS - '95)

PERSONAL: Born 9/26/76...Liberal arts major...Son of Chuck and Mary Lou Barnett...High school valedictorian...High school letterwinner in basketball and soccer...Hobbies include fishing, traveling, mountain biking, playing the piano.

GEORGE FOX: One of Bruins' top hitters and pitchers...Hardest thrower on team (mid-80s)...Above-average curve ball...**1996:** Only freshman selected to Northwest Conference first team (pitcher)...Best ERA on team (1.88)...Second-highest batting average (.364) among regulars...Hit .479 with runners in scoring position...5-0 versus conference opponents...Led team in strikeouts (44).

ARLINGTON CHRISTIAN HS: Coached by Tom Roys...**1995:** Class 2A all-state...First-team all-area...First-team All-Wesco League pitcher and first baseman...Team captain and MVP...Arlington Times Athlete of the Year...Hit .463 with four doubles, two home runs and 10 RBI...5-2 pitching record...2.86 ERA...65 strikeouts...**1994:** First-team All-Wesco League first baseman and second-team pitcher...Team captain and MVP...Best batting average in school history (.473)...Two-time Everett Herald Athlete of the Week...6-1 pitching record...2.58 ERA...48 strikeouts.

GF CAREER STATS:

Pitching

Year	GP	IP	W	L	S	H	R	ER	BB	SO	SH	ERA
1996	13	76.67	7	2	0	70	30	16	21	44	0	1.88

Hitting

Year	AB	R	H	2B	3B	HR	RBI	BA	SB/SBA	BB	SO	E
1996	121	29	44	8	1	3	36	.364	2/3	22	9	1

Eric Beasley

33



Pitcher, Freshman, 6-0, 165

Bats: Right/Throws: Right

Hometown: The Dalles, Ore.

(The Dalles HS - '96)

PERSONAL: Born 4/16/78... Education major...Son of David and Becky Beasley...High school letterwinner in cross country...Hobbies include golfing, hunting, and playing guitar.

GEORGE FOX: Will pitch short relief...Sidearm delivery...Throws 80-84 mph...Good movement...Very mature and focused...Well schooled in mental aspects of pitching.

THE DALLES HS: Coached by Bob Williams...**1996:** Second-team All-Tri-Valley League pitcher.

Scott Box



15

Catcher, Freshman, 6-1, 215
Bats: Right/Throws: Right
Hometown: Redmond, Wash.
(Inglemoor HS - '95)

PERSONAL: Born 6/29/76...Liberal arts major...Son of Tom and Janice Box...High school letterwinner in basketball... Hobbies include reading and playing the guitar.

GEORGE FOX: One of hardest workers on team...Shown tremendous improvement since joining team...Good athlete...One of spiritual leaders on team...**1996:** Redshirted season.

INGLEMOOR HS: Coached by Paul Moody...**1995:** Second-team All-King Co. Conference... Team captain...**1994:** Second-team All-King Co. Conference.

Will Clark



22

Pitcher, Sophomore, 5-11, 180
Bats: Right/Throws: Right
Hometown: Albany, Ore.
(Santiam Christian HS - '94)

PERSONAL: Born 7/10/76...Elementary education major...Son of Bill and Pam Clark... Hobbies include sports-card collecting and water sports.

GEORGE FOX: Short reliever...Very focused...**1996:** Redshirted season...Helped George Fox to 9-3 start as No. 1 reliever before injuring shoulder. In 12 games after losing Clark, George Fox went 3-9. **1995:** Tied George Fox record by pitching in 17 games...2.83 ERA led team and was fifth best in George Fox history...Started against No. 1-ranked Lewis-Clark State College (3/9).

SANTIAM CHRISTIAN HS: Coached by Matt Nosack...**1994:** Class 2A third-team all-state...First-team all-West Valley League...Team MVP...64 IP, 1.31 ERA, 96 strikeouts, 9-4...Hit .471 in 70 at bats...**1993:** Class 2A honorable mention all-state...First-team all-West Valley League...Team MVP.

GF CAREER STATS:

Pitching

Year	GP	IP	W	L	S	H	R	ER	BB	SO	SH	ERA
1995	17	38.33	1	2	1	27	21	12	21	18	0	2.83
1996	4	3.67	0	1	2	9	6	6	0	2	0	14.7
Total	21	42.0	1	3	3	36	27	18	21	20	0	3.86

Sundar Cook



11

Infield, Sophomore, 5-10, 165
Bats: Right/Throws: Right
Hometown: Kirkland, Wash.
(Juanita HS - '95)

PERSONAL: Born 3/8/77...Son of Jerry and Barbara Cook...Athletic training major...High school letterwinner in baseball and football.

GEORGE FOX: Outstanding defensively...Improving hitting and throwing...Very hard worker in practice...**1996:** Played second base.

JUANITA HS: Coached by Gary Groening...**1995:** All-King Co. League honorable mention... .294 batting average...25 hits.

GF CAREER STATS:

Hitting

Year	AB	R	H	2B	3B	HR	RBI	BA	SB/SBA	BB	SO	E
1996	3	1	0	0	0	0	0	.000	0/0	1	1	0

Alex Dobson



10

Pitcher, Senior, 6-1, 215
Bats: Right/Throws: Left
Hometown: Beaverton, Ore.
(Beaverton HS - '90)

PERSONAL: Born 11/12/71...Health education major...Son of William and Ruth Dobson...After one season as junior varsity coach at Lake Oswego High School, stepped up to become the youngest head baseball coach in Oregon class 4A. After coaching in 1994 and 1995, left position to pursue teaching degree...Hobbies include coaching baseball, fishing, golf and playing guitar.

GEORGE FOX: Starts season as No. 4 pitcher...Could be a spot starter or throw middle relief...Excellent control with good movement...Finds ways to get people to miss ball...Senior co-captain...**1996:** Used as spot starter/middle reliever...Earned wins against University of Puget Sound (March 28) and Pacific Lutheran University (April 6)...2.33 ERA second best on team.

CHEMEKETA CC: Coached by Steve Headrickson...**1991:** Played first base.

BEAVERTON HS: Coached by Mike Bubalo...**1990:** Played first base...Team won Metro League title.

GF CAREER STATS:

Pitching

Year	GP	IP	W	L	S	H	R	ER	BB	SO	SH	ERA
1996	15	27.67	2	0	1	34	16	8	11	18	0	2.60

David Farrell



1

Infield, Freshman, 5-9, 155
Bats: Switch/Throws: Right
Hometown: Seattle, Wash.
(Foster HS - '96)

PERSONAL: Born 11/3/77...Business major...Son of Bob Farrell and Peggy Upshaw...Played baseball for Curtis Connie Mack baseball club...High school letterwinner in football...Hobbies include weight lifting and sports card collecting.

GEORGE FOX: Good defensive shortstop...Hitting will improve with weight training...Excellent attitude/work

habits...Coach Bailey calls him a great addition to team.

FOSTER HS: Coached by Rusty Trudeau...**1996:** All-Nisqually League shortstop...Team defensive MVP...Most inspirational player...**1995:** All-Nisqually League Utility Player...Team MVP...**1994:** All-Nisqually League Designated Hitter...League Batting Title (.517)...**1993:** All-Nisqually League Honorable Mention... Voted Rookie of the Year by teammates...Most improved player.

Shawn Foote



3

Infield, Junior, 5-8, 165
Bats: Left/Throws: Right
Hometown: Melba, Idaho
(Melba HS - '93)

PERSONAL: Born 8/24/74...Pre-law/business major...Son of E.G. and Patsy Foote...Hobbies include snow skiing, drawing, painting and fishing...An Eagle Scout...Twin brother played baseball and football for Pacific Lutheran University and other brother plays baseball for Albertson College of Idaho.

GEORGE FOX: Battling for playing time at second base...Playing time will be determined by hitting...Above-average speed...Good work habits...**1996:** Played mostly second base...Stole four bases in five attempts.

PACIFIC LUTHERAN UNIVERSITY: **1994:** Did not play baseball.

MELBA HS: Coached by Corky Hill...**1993:** Team captain...All-Western Idaho Conference...**1992:** Team captain...Also lettered in football, basketball and wrestling.

GF CAREER STATS:

Hitting

Year	AB	R	H	2B	3B	HR	RBI	BA	SB/SBA	BB	SO	E
1995	14	10	4	0	0	0	1	.214	8/8	1	3	1
1996	31	11	3	1	0	0	1	.097	4/5	6	10	2
Total	45	21	7	1	0	0	2	.155	12/13	7	13	3

Buster Ford



28

Infield, Junior, 6-0, 195
Bats: Right/Throws: Right
Hometown: Corvallis, Ore.
(Santiam Christian HS - '93)

PERSONAL: Born 9/8/75...Business major...Son of Bill and Jackie Ford...Hobbies include hunting, fishing and snowboarding.

GEORGE FOX: Starting second baseman...Contact hitter...Very good defensive skills...Quick feet, good range...Team co-captain...**1996:** Played shortstop, second base and third base...Hit .326 with runners in scoring position...**1995:** Played in 23 games.

SANTIAM CHRISTIAN HS: Coached by Matt Nosack...**1993:** Team captain...All-West Valley League selection...Named to 2A all-state team...Played in all-state game...**1992:** Team captain.. All-West Valley League selection...Also a four-year letterwinner in football and two-year letterwinner in basketball.

GF CAREER STATS:

Hitting

Year	AB	R	H	2B	3B	HR	RBI	BA	SB/SBA	BB	SO	E
1995	66	10	14	0	0	0	1	.212	1/1	5	5	4
1996	94	21	27	4	0	0	16	.287	1/4	8	8	11
Total	160	31	41	4	0	0	17	.256	1/5	13	13	15

Lance Gilmore



8

Infield, Sophomore, 6-1, 185
Bats: Right/Throws: Right
Hometown: Coos Bay, Ore.
(North Bend HS - '95)

PERSONAL: Born 4/1/77...Elementary education major...Son of Dan and Debbie Gilmore...High school letterwinner in football and basketball...Younger brother of teammate Ken Gilmore.

GEORGE FOX: Fighting for starting shortstop position...Has shown improved confidence and skills...**1996:** Played shortstop and third base...Hit .345 with runners in scoring position.

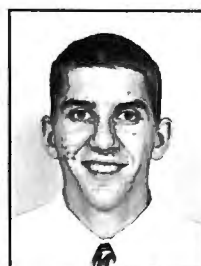
NORTH BEND HS: Coached by Dave Gibson...**1995:** Class 4A first team all-state..First-team all-Midwestern League shortstop...Midwestern League Most Valuable Player...Team captain...Team MVP...Selected to play in the 1995 State-Metro All-Star Baseball Series...North Bend High School Male Athlete of the Year...Oregon Boy's State delegate... .446 batting average...32 RBI, 8 home runs, 8 doubles...**1994:** Played shortstop.

GF CAREER STATS:

Hitting

Year	AB	R	H	2B	3B	HR	RBI	BA	SB/SBA	BB	SO	E
1996	57	5	15	3	0	0	10	.263	0/0	3	8	10

Ken Gilmore



16

Pitcher, Sophomore, 6-0, 170
Bats: Right/Throws: Right
Hometown: Coos Bay, Ore.
(North Bend HS - '94)

PERSONAL: Born 12/31/75...Computer science major... Son of Dan and Debbie Gilmore... Older brother of teammate Lance Gilmore...Class salutatorian...Boy's State delegate...Hobbies include drawing, hunting, camping, and other sports.

GEORGE FOX: Middle relief...Working to improve control...Very coachable...**1996:** Appeared in four games.

NORTH BEND HS: Coached by Bill Horning...**1994:** Team captain and MVP...All-Midwestern League utility player...**1992:** Pitched perfect game versus Marshfield High.

GF CAREER STATS:

Pitching

Year	GP	IP	W	L	S	H	R	ER	BB	SO	ERA
1996	4	2.33	0	0	0	2	2	1	1	1	3.86

Jeremy Green



35

Pitcher, Freshman, 6-1, 185
Bats: Right/Throws: Right
Hometown: Portland, Ore.
(Clackamas HS - '96)

PERSONAL: Born 11/2/77...Secondary education major...Son of Don and Ellie Green...High school letterwinner in basketball and football...Hobbies include hunting, fishing and motorcross racing.

GEORGE FOX: Possible starter...Good control...Working on improving mechanics to become more efficient...Worked hard on conditioning during off-season...Very coachable.

CLACKAMAS HS: Coached by Wilkins Baton...**1996:** Second-team All-Three Rivers League...Team captain...**1995:** Second-team All-Three Rivers League.

Chad Hollabaugh



9

Outfield, Sophomore, 5-11, 195
Bats: Left/Throws: Left
Hometown: Portland, Ore.
(Lakeridge HS - '95)

PERSONAL: Born 1/11/76...Business major...Son of Brad and Joan Hollabaugh...Hobbies include weightlifting and fishing.

GEORGE FOX: Starting left fielder...Will hit anywhere from No. 2 to No. 6 in lineup...Left-handed hitter with power...Student of game.

LINFIELD COLLEGE: Coached by Scott Carnahan...**1996:** Played outfield and designated hitter for conference champs...Hit .270 as freshman.

LAKERIDGE HS: **1995:** Coached by Dave Gasser...**1996:** Class 4A second-team all-state outfielder...All-Three Rivers League first team...Played in Metro All-Star series — the only player to hit a home run...KXYQ Radio Player of the Week...Team captain.

Ben Hoffman



2

Infield, Freshman, 5-8, 150
Bats: Rights/Throws: Right
Hometown: The Dalles, Ore.
(The Dalles HS - '96)

PERSONAL: Born 4/27/78...History major...Son of Phil and Linda Hoffman...Honor student...Hobbies include water skiing.

GEORGE FOX: Contact hitter...Working to improve defensively...Very competitive...Hard worker.

THE DALLES HS: Coached by Steve Sugg...**1996:** First-team All-Tri-Valley League third baseman...Led team with 29 RBI...**1995:** Second-team All-Tri-Valley League third baseman...**1994:** Member of 3A state championship team.

Rob Hoover



7

Catcher, Senior, 6-0, 195
Bats: Right/Throws: Right
Hometown: West Linn, Ore.
(West Linn HS - '92)

PERSONAL: Born 8/24/73...Business major...Son of Bob and Julie Hoover...Hobbies include fishing and hunting.

GEORGE FOX: Back-up catcher...Senior co-captain...Coach Bailey calls him a big-time team player...Leads by example...**1996:** Played at first base...Hit .304 with runners in scoring position...**1995:** Moved from catcher to first base...Hit 4 for 6 versus Linfield College.

PACIFIC LUTHERAN UNIVERSITY: **1993:** Coached by Larry Marshall.

WEST LINN HS: Coached by Pat Bailey...**1992:** Team captain...All-Three Rivers League selection...Named a National Football Hall of Fame Scholar-Athlete...**1991:** Team captain...All-Three Rivers League selection...Also lettered in football.

GF CAREER STATS:

Hitting

Year	AB	R	H	2B	3B	HR	RBI	BA	SB/SBA	BB	SO	E
1995	120	11	28	5	0	0	19	.233	5/6	24	40	9
1996	40	6	11	2	0	1	7	.275	0/0	4	7	5
Total	160	17	39	7	0	1	26	.244	5/6	28	47	14

Marcus Muñoz



18

Pitcher, Freshman, 6-4, 200
Bats: Right/Throws: Right
Hometown: Aloha, Ore.
(Aloha HS - '96)

PERSONAL: Born 6/20/78...Liberal arts major...Son of Joe and Laura Muñoz...Younger brother of teammate Ryan Muñoz.

GEORGE FOX: Very focused and competitive...Switched to sidearm delivery in off-season...Understands what it takes to improve...Back-up first baseman.

ALOHA HS: Coached by Bill Love...**1996:** Team captain...Honorable mention all-Metro League infielder...**1995:** Second-team all-Metro League pitcher.

Ryan Muñoz



13

Pitcher, Junior, 6-1, 185
Bats: Left/Throws: Right
Hometown: Aloha, Ore.
(Aloha HS - '94)

PERSONAL: Born 5/9/76...Liberal arts major...Son of Joe and Laura Muñoz...Hobbies include listening to music and playing basketball...Older brother of teammate Marcus Muñoz.

GEORGE FOX: One of team's top three pitchers...Fastest player on team...Lead-off batter...Team co-captain (one of just two players allowed to be a team captain as a junior in Pat Bailey's 18-year coaching career)...**1996:** One of three underclassmen named to the Northwest Conference first team (third base)...Best batting average (.379) on team...Hit team-best .509 with runners in scoring position...Best strikeout (33) to walk (11) average (3.0) among Bruin pitchers...Third-best ERA on team (2.67)...When not pitching, started in outfield and later at third base...**1995:** Cascade Conference honorable mention utility player...Learned to play right field...Hit .322...Homered versus Eastern Oregon State.

ALOHA HS: Coached by Bill Love...**1994:** Team captain... All-Metro League...Played first base, third base and pitched.

GF CAREER STATS:

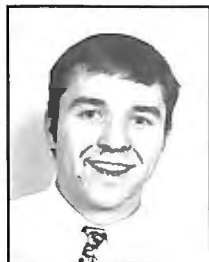
Pitching

Year	GP	IP	W	L	S	H	R	ER	BB	SO	SH	ERA
1995	9	52.67	2	4	0	82	44	39	12	20	0	6.72
1996	15	58.33	7	2	1	68	31	17	11	34	0	2.62
Total	24	111	9	6	1	150	75	66	23	54	0	5.35

Hitting

Year	AB	R	H	2B	3B	HR	RBI	BA	SB/SBA	BB	SO	E
1995	149	18	48	6	0	1	14	.322	9/10	10	13	2
1996	153	34	58	9	1	2	31	.379	9/12	9	10	9
Total	302	52	106	15	1	3	45	.350	18/22	19	23	11

Craig Oliver



5

Infielder, Senior, 5-9, 165
Bats: Right/Throws: Right
Hometown: Seattle, Wash.
(Shorecrest HS - '95)

PERSONAL: Born 9/6/74...Business and economics/communications arts major...Son of Ken and Bonnie Oliver...High school letterwinner in tennis...Hobbies include mountain biking, music, backpacking, skiing, sports, business investments, hanging out with friends, family and dog.

GEORGE FOX: Starting third baseman...Could play shortstop...Senior co-captain...Very good glove action...Loves game...Two surgeries on left wrist since Dec. 1995...**1996:** Returned in midseason from broken arm injury, started at third base and shortstop and led team in batting average (.414).

YAKIMA VALLEY CC: Coached by Bob Garretson...**1995:** Played third base... .301 batting average...**1994:** Second Team All-Northwest Athletic Association of Community Colleges... .369 batting average.

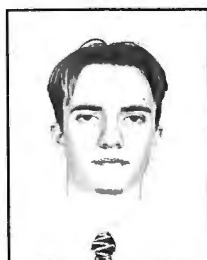
SHORECREST HS: Coached by Stan Taloff...**1993:** First-team all-state third base...First-team all-Wesco League at third base...Team captain...Voted best defense by team members...**1992:** All-area first-team third base...Second-team all-Wesco League third base...Voted best defense by team members.

GF CAREER STATS:

Hitting

Year	AB	R	H	2B	3B	HR	RBI	BA	SB/SBA	BB	SO	E
1996	34	5	14	1	0	0	4	.412	0/0	1	1	4

Jake Proffitt



42

Outfielder, Freshman, 5-10, 160
Bats: Right/Throws: Right
Hometown: Spokane, Wash.
(Northwest Christian HS - '96)

PERSONAL: Born 3/6/78...Psychology major...Son of Mike and Janell Proffitt.

GEORGE FOX: Son of high school baseball coach...New to team after transferring in at midsemester break.

WHITWORTH COLLEGE: 1996: Attended fall semester.

NORTHWEST CHRISTIAN HS: Coached by Jack Hancock...**1996:** Team captain...First-team all-Panorama League...**1995:** Team captain...Also lettered in soccer.

David Rasmussen



25

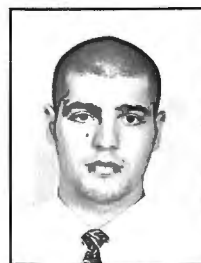
Outfielder, Freshman, 6-2, 180
Bats: Right/Throws: Right
Hometown: Selma, Calif.
(Immanuel HS - '96)

PERSONAL: Born 8/10/78...Social studies teaching major...Son of Curtis and Dimple Rasmussen... Also a letterwinner in football (two years) and basketball (one year).

GEORGE FOX: Outfield...Working on fundamental skills...Improving strength and speed...Coach Pat Bailey calls him an excellent Christian leader...One of two Fellowship of Christian Athletes team representatives (Nate Swan the other).

IMMANUEL HS: Coached by Ryan Wood...**1996:** Fresno County all-star team...First-team All-East Sierra League outfield...Team captain...Voted team MVP...**1995:** First-team East Sierra League outfield...Coach's award...**1994:** East Sierra League honorable mention.

Kess Romano



30

Pitcher, Freshman, 6-1, 180
Bats: Right/Throws: Right
Hometown: Vancouver, Wash.
(Mountain View HS - '96)

PERSONAL: Born 2/8/78...Liberal arts major...Son of Jerry Romano...Hobbies include skiing and playing golf.

GEORGE FOX: Middle reliever...Biggest strength is accuracy...Above-average fastball and outstanding change-up...Working to improve curve ball.

MOUNTAIN VIEW HS: Coached by Richard Lindsley...**1996:** Class 3A all-state honorable mention...First-team Greater St. Helens League...Team captain.

Matt Saltmarsh



17

Infield, Junior, 6-3, 210
Bats: Left/Throws: Left
Hometown: Oregon City, Ore.
(Oregon City HS - '93)

PERSONAL: Born 6/9/75...Physical education major...Son of Sandy Doud...Hobbies include reading, spending time with friends and family, enjoying the sunshine.

GEORGE FOX: Hits with power...First baseman...Mid-semester transfer...Left-handed hitter.

COLLEGE OF THE DESERT: Coached by Dave Buttles...Played with current teammate Matt Unis...**1996:** Team captain...All-Foothill Conference...Selected and played in Southern California Junior College all-star series...**1995:** Played with current teammate Matt Unis.

POINT LOMA NAZARENE: **1994:** Redshirted on team that went to 1994 NAIA national tournament...Attended with current teammate Matt Unis.

OREGON CITY HS: Coached by Greg Lord...**1993:** First-team all-Three Rivers League...Hit 12 doubles and four home runs...Played with current teammate Matt Unis.

Ryan Schaefer



42

Pitcher, Freshman, 6-0, 155
Bats: Right/Throws: Right
Hometown: Grants Pass, Ore.
(Grants Pass HS - '96)

PERSONAL: Born 2/11/78...Business/history major...Son of Gary and Margy Schaefer...Hobbies include golf, skiing and hunting.

GEORGE FOX: Good control...Working to increase strength...Joined team after fall ball.

GRANTS PASS HS: Coached by Stacey Morgan...**1996:** Did not play...**1995:** 7-6 record...2.31 ERA...Threw no-hitter against Ashland High...Threw two complete game one-hitters...Lettered in football and golf...**1994:** Three saves...2.74 ERA.

Jason Schilperoort



20

Outfield, Freshman, 5-11, 160
Bats: Right/Throws: Right
Hometown: Chehalis, Wash.
(W.F. West HS - '96)

PERSONAL: Born 3/18/78...Liberal arts major...Son of Dan Schilperoort...Hobbies include tennis, bowling, ping pong, paint ball and golf.

GEORGE FOX: One of fastest players on team...Most likely will get playing time in center and left field.

W.F. WEST HS: Coached by Tom Zuber...**1996:** All-Black Hills League...Regional all-star...Team captain...Golden Glove award...Big-Stick award...Team MVP...**1995:** All-Black Hills League, Golden Glove award...**1994:** Golden Glove award...Voted Most Inspirational.

Troy Schrenk



14

Pitcher, Senior, 5-10, 170
Bats: Right/Throws: Left
Hometown: Aurora, Ore.
(North Marion HS - '92)

PERSONAL: Born 6/23/74...Sociology major...Son of Ron and Linda Shrenk...High school letterwinner in football and basketball...Hobbies include fly fishing, camping, water skiing, and snow skiing...Married Brandy Flowers Aug. 10, 1996.

GEORGE FOX: One of top three pitchers...May play some outfield...Good speed...Good instinctive baseball player...Senior co-captain...**1996:** Named Northwest Conference pitcher of the week (April 15)...Second on team in strikeouts (43) on team...Used as both a starter and a closer...Threw most innings (77.33) on team...**1994:** Set George Fox single-season record for most wins (8-1)...First team all-Cascade Conference...First-team all-NAIA District 2 pitcher...Led team in games started (12) and strikeouts (60).

LEWIS-CLARK STATE COLLEGE: **1995:** Coached by Ed Cheff...Medical redshirt (tendinitis).

PORTLAND STATE UNIVERSITY: **1993:** Coached by Jack Dunn...Pac-10 Player of the Month.

NORTH MARION HS: Coached by Randy Brack...**1992:**

Class 4A second team all-state...First team all-Capital League...One of three Oregon high school seniors selected by coaches to receive Old Timers Player's Association Scholarship...Team MVP and captain...**1991:** Class 3A honorable mention all-state...First team all-Capital League...Team MVP and captain...**1990:** Class 3A honorable mention all-state...First team all-Capital League.

GF CAREER STATS:

Pitching

Year	GP	IP	W	L	S	H	R	ER	BB	SO	SH	ERA
1994	12	68.2	8	1	0	47	29	24	30	60	2	3.15
1996	15	77.33	4	6	2	80	49	35	27	43	1	4.07
Total	27	145.53	12	7	2	127	78	59	57	103	3	3.65

Jason Seibel



21

Outfield, Sophomore, 6-0, 180
Bats: Right/Throws: Left
Hometown: Hillsboro, Ore.
(Hillsboro HS - '94)

PERSONAL: Born 10/7/76...Marketing major...Son of Stephen and Cynthia Seibel...Hobbies include playing basketball, camping, fishing, swimming, visiting friends and rafting.

GEORGE FOX: Above-average speed...Starting rightfielder...Hits with power.

MT. HOOD CC: **1996:** First-team All-NWAACC...First team All-Southern division...Team MVP...Leading hitter on team (.396).

HILLSBORO HS: Coached by Ted Zehr...**1994:** First team All-Metro League...Named Most Improved...**1993:** Played on 4A state champion team.

Mike Shear



4

Pitcher, Sophomore, 6-1, 190
Bats: Right/Throws: Right
Hometown: Junction City, Ore.
(Junction City HS - '95)

PERSONAL: Born 5/20/77...Business and economics/education major...Son of Steven and Kathleen Shear...High school letterwinner in football and basketball...Hobbies include football, swimming, fishing, and weight lifting.

GEORGE FOX: Best overall selection of pitches on team...Coach Pat Bailey says his strike-to-ball percentage will determine number of innings he pitches...**1996:** Pitched six innings in a win over Western Baptist (March 12)...Appeared in six games.

JUNCTION CITY HS: Coached by Cal Fagan...**1995:** Honorable mention Sky-Em League outfielder...Most inspirational player...Team captain...**1994:** Second team all-Sky-Em League outfielder...Most inspirational player...Team captain... .279 batting average...**1993:** Most inspirational player...Team MVP...**1992:** Team most inspirational player...Most improved player.

GF CAREER STATS:

Pitching

Year	GP	IP	W	L	S	H	R	ER	BB	SO	SH	ERA
1996	6	17	1	2	0	25	23	17	13	10	0	9.00

Scott Spurlock



29

Outfield, Sophomore, 6-2, 200
Bats: Right/Throws: Right
Hometown: Coeur d'Alene, Idaho
(Coeur d'Alene HS - '94)

PERSONAL: Born 10/17/75...Premed major...Son of Walt and Connie Spurlock...Hobbies include skiing and white-water rafting.

GEORGE FOX: Coach Bailey says nobody outworks Scott...One of team spiritual leaders...**1996:** Redshirted behind three senior outfielders...**1995:** Saw 16 games as relief outfielder.

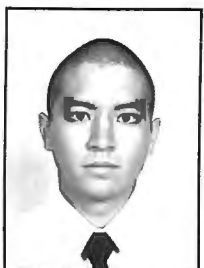
COEUR D'ALENE HS: 1994: Coached by Ted Paige.

GF CAREER STATS:

Hitting

Year	GP	AB	R	H	2B	3B	HR	RBI	BA	SB/SBA	BB	SO	E
1995	16	35	3	3	0	0	0	0	.086	2/2	2	14	4

John Suehisa



37

Outfield, Freshman, 5-3, 140
Bats: Right/Throws: Right
Hometown: Wahiawa, Hawaii
(Leilehua HS - '96)

PERSONAL: Born 4/13/78...Health and human performance major...Son of Laura Suehisa...Named Rookie of the Year for George Fox varsity soccer team...Hobbies include surfing, skin diving, fishing, soccer and baseball.

GEORGE FOX: Quick...Missed fall ball playing varsity soccer...Good athlete.

LEILEHUA HS: Coached by Kevin Tosaka...**1996:** Team co-captain and Most Valuable Player...OIA West honorable mention...All-Sun all-star selection...Pony State Palomino Hawaii State Champion — best offensive player...**1995:** Co-captain...Pitched no-hitter...Most Valuable Player.

Nate Swan



26

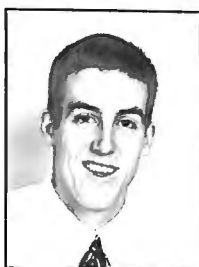
Utility, Freshman, 1-1, 165
Bats: Right/Throws: Right
Hometown: Medford, Ore.
(South Medford - '96)

PERSONAL: Born 8/29/78...Business/economics major (marketing emphasis)...Son of Loren H. Swan, Jr...Hobbies include biking, running and all other sports.

GEORGE FOX: Will play either third base or shortstop...One of two team representatives for Fellowship of Christian Athletes (David Rasmussen the other).

SOUTH MEDFORD HS: 1996: Team captain...Oregon Baseball Association all-state team...Selected for Fall Prep Showcase...Southern Oregon Conference honorable mention...Also lettered in cross country.

Travis Tobin



36

Pitcher, Sophomore, 6-5, 195
Bats: Right/Throws: Right
Hometown: Beaverton, Ore.
(Jesuit HS - '94)

PERSONAL: Born 11/6/75...Health and human performance major...Son of Bill and Ellen Tobin...Hobbies include fishing, basketball and water-skiing.

GEORGE FOX: Spot starter/middle reliever...One of team's spiritual leaders...**1996:** Redshirted...**1995:** Was projected as George Fox's No. 2 pitcher before early-season shoulder injury.

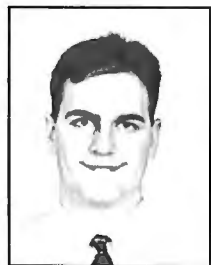
JESUIT HS: Coached by Tim Massey.

GF CAREER STATS:

Pitching

Year	GP	GS	GC	IP	W	L	S	H	R	ER	BB	K's	SH	ERA
1995	1	1	0	4.66	0	1	0	2	6	1	5	0	0	1.93

Mark Tyler



23

Catcher, Sophomore, 6-0, 200
Bats: Right/Throws: Right
Hometown: Bothell, Wash.
(Bothell HS - '95)

PERSONAL: Born 3/18/77...Liberal arts major...Son of Dennis and Raelene Tyler...High school letterwinner in football...Hobbies include skiing.

GEORGE FOX: Starting catcher...Defensively very quick release...Accurate arm...No. 3 hitter...Contact hitter with occasional power...Very good in the clutch...Improved strength with work in weight room...**1996:** Hit .359 with runners in scoring position...Back-up catcher.

BOTHELL HS: Coached by Brad Files...1995: First-team All-King Co. League catcher... .329 batting average...29 RBI, second best in league history...3 home runs, 3 triples, 8 doubles...**1994:** Second-team all-King Co. League utility player... .322 batting average...19 RBI, 3 home runs, 10 doubles, 16 stolen bases.

GF CAREER STATS:

Hitting

Year	AB	R	H	2B	3B	HR	RBI	BA	SB/SBA	BB	SO	E
1996	75	19	25	8	1	1	19	.333	3/3	13	9	6

Matt Unis



12

Infield, Junior, 6-2, 180
Bats: Left/Throws: Right
Hometown: Milwaukie, Ore.
(Oregon City HS - '93)

PERSONAL: Born 9/12/74...Social studies teaching major...Son of Roger and Betty Unis...Hobbies include basketball and fishing.

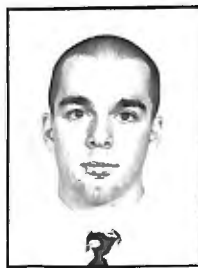
GEORGE FOX: Fighting for playing time at third base...Could play second base...Good clutch hitter.

COLLEGE OF THE DESERT: 1996: Most inspirational...**1995:** Hit .281 and played third base...Played with current teammate Matt Saltmarsh.

POINT LOMA NAZARENE: 1994: Redshirted on team that went to 1994 NAIA national tournament...Attended with current teammate Matt Saltmarsh.

OREGON CITY HS: 1993: Team captain...Second team Three Rivers League...Hit .330...Played with current teammate Matt Saltmarsh.

Jason Wieg



6

Outfield, Freshman, 5-8, 160
Bats: Right/Throws: Right
Hometown: Seattle, Wash.
(Shorecrest HS - '96)

PERSONAL: Born 11/11/77...Accounting major...Son of Steve and Linda Wieg...Hobbies include outdoor activities, weight lifting and card collecting...Father assists on Connie Mack baseball team in summer...Lettered in high school football.

GEORGE FOX: Fighting for one of top six outfielder positions...Huge desire.

SHORECREST HS: 1996: Team captain...**1995:** Team captain...“Mr. Hustle” award winner...Wesco AA second-team catcher...**1994:** Wesco AA honorable mention outfielder.

Northwest Conference of Independent Colleges Opponents

Lewis & Clark College "Pioneers"

Location: Portland, Oregon

Enrollment: 1,800 **1996 Record:** 11-20

Affiliation: NAIA/NCAA III

Northwest Conference of Independent Colleges

Head Coach: Jerry Gatto (Univ. of Portland '61)

Record at School: 320-244 (15 years)

SID: Tony Fowler, (503) 768-7067 **Fax:** (503) 768-7058

Field: Huston Sports Complex (300)



Linfield College "Wildcats"

Location: McMinnville, Oregon

Enrollment: 2,220 **1996 Record:** 26-15

Affiliation: NAIA/NCAA III

Northwest Conference of Independent Colleges

Head Coach: Scott Carnahan (Linfield '73)

Record at School: 286-221 (13 years)

SID: Kelly Bird, (503) 434-2439 **Fax:** (503) 434-2497

Field: Jim Wright Stadium (860)



Whitman College "Missionaries"

Location: Walla Walla, Washington

Enrollment: 1,350 **1996 Record:** 3-30

Affiliation: NAIA/NCAA III

Northwest Conference of Independent Colleges

Head Coach: Travis Feezell (Wyoming '90)

Record at School: First year

SID: Dave Holden, (509) 527-5902 **Fax:** (509) 527-4963

Field: Borleske Stadium (1,500)



Whitworth College "Pirates"

Location: Spokane, Washington

Enrollment: 1,500 **1996 Record:** 20-16

Affiliation: NAIA/NCAA III

Northwest Conference of Independent Colleges

Head Coach: Rod Taylor (Whitworth '91)

Record at School: 48-61 (3 years)

SID: Steve Flegel, (509) 466-3239 **Fax:** (509) 466-3720

Field: Merkel Field (250)



Pacific University "Boxers"

Location: Forest Grove, Oregon

Enrollment: 1,725 **1996 Record:** 16-18

Affiliation: NAIA/NCAA III

Northwest Conference of Independent Colleges

Head Coach: Greg Bradley (Oregon State '75)

Record at School: 16-18 (one year)

SID: Ronn Rowland, (503) 359-2161 **Fax:** (503) 359-2209

Field: Lincoln Park (1,000)



Willamette University "Bearcats"

Location: Salem, Oregon

Enrollment: 1,701 **1996 Record:** 22-17

Affiliation: NAIA/NCAA III

Northwest Conference of Independent Colleges

Head Coach: David Wong (Willamette '85)

Record at School: 120-112 (6 years)

SID: Cliff Voliva, (503) 370-6110 **Fax:** (503) 375-5428

Field: John Lewis Field (1,200)



University of Puget Sound "Loggers"

Location: Tacoma, Washington

Enrollment: 2,700 **1996 Record:** 6-28

Affiliation: NAIA/NCAA III

Northwest Conference of Independent Colleges
(Member in 1996-97)

Head Coach: Ken Garland (Willamette '81)

Record at School: 6-28 (one year)

SID: Robin Hamilton, (206) 756-3141 **Fax:** (206) 756-3634

Field: Burns Field



Pacific Lutheran University "Lutes"

Location: Tacoma, Washington

Enrollment: 3,500 **1996 Record:** 19-18

Affiliation: NAIA/NCAA III

Northwest Conference of Independent Colleges

Head Coach: Larry Marshall (Wash. St. '74)

Record at School: 210-248 (13 years)

SID: Nick Dawson, (206) 535-7356 **Fax:** (206) 535-7584

Field: PLU Field (400)



N O N - C O N F E R E N C E O P P O N E N T S

Albertson College of Idaho "Coyotes"

Location: Caldwell, Idaho

Enrollment: 650

Affiliation: NAIA, Cascade Conference

1996 Record: 46-16

Head Coach: Tim Mooney (Idaho '80)

Record at School: 326-189-3 (10 years)

Baseball SID: Dave Hahn, (208) 459-5681

Fax: (208) 439-5834

Field: Simplot Stadium (6,500)

Central Washington University "Wildcats"

Location: Ellensburg, Washington

Enrollment: 7,000

Affiliation: NAIA, independent

1996 Record: 19-27

Head Coach: Desi Storey

Record at School: 87-107 (5 years)

Baseball SID: Bob Gupitill, (509) 963-1914

Fax: (509) 963-2351

Field: Tomlinson Field (700)

Concordia University "Cavaliers"

Location: Portland, Ore.

Enrollment: 1,034

Affiliation: NAIA, Cascade Conference

1996 Record: 12-26

Head Coach: Brian Mullan

Record at School: 17-58 (2 years)

Baseball SID: Mike Merrill, (503) 280-8695

Fax: (503) 280-8591

Field: Concordia University Field

Eastern Oregon State College "Mountaineers"

Location: La Grande, Oregon

Enrollment: 1,810

Affiliation: NAIA, Cascade Conference

1996 Record: 18-26

Head Coach: Wes McAllaster/Dave Huffine

Record at School: (first year)

SID: Dave Girrard, (503) 962-3732

Fax: (503) 962-3577

Field: Snowflake Field (200)

Hawaii Pacific University "Sea Warriors"

Location: Honolulu, Hawaii

Enrollment: 8,000

Affiliation: NAIA, Far West Region

1996 Record: 11-23-1

Head Coach: Allan Sato

Record at School: 11-23-1 (1 year)

Baseball SID: Trey Garman, (808) 544-0221

Fax: (808) 566-2405

Field: Hans L'Orange Field

Northwest Nazarene College "Wildcats"

Location: Nampa, Idaho

Enrollment: 1,275

Affiliation: NAIA, Cascade Conference

1996 Record: 14-24

Head Coach: Brian Muir (Azusa Pacific '91)

Record at School: 54-84 (4 years)

Baseball SID: Rich Sanders, (208) 467-8397

Fax: (208) 467-8396

Field: Elmore W. Vail Baseball Stadium (1,000)

University of Portland "Pilots"

Location: Portland, Oregon

Enrollment: 2,700

Affiliation: NAIA, Div. 1, West Coast Conference

1996 Record: 14-32

Head Coach: Terry Pollreis (Portland '69)

Record at School: 250-266-2 (10 years)

Baseball SID: Steve Walker, (503) 283-7439

Fax: (503) 283-7242

Field: Pilot Stadium (1,500)

Western Baptist College "Warriors"

Location: Salem, Oregon

Enrollment: 694

Affiliation: NAIA, Cascade Conference

1996 Record: 7-26

Head Coach: Denny Rasmussen (Biola '70)

Record at School: 47-317 (8 years)

SID: Tim Smith, (503) 375-7021

Fax: (503) 585-4316

Field: Chemeketa Community College (300)

Western Oregon State College "Wolves"

Location: Monmouth, Oregon

Enrollment: 3,700

Affiliation: NAIA, Cascade Conference

1996 Record: 28-23-1

Head Coach: Terry Baumgartner (WOSC '93)

Record at School: 61-36-1 (2 years)

SID: Tim Clodjeaux, (503) 838-8308

Fax: (503) 838-8164

Field: Western Oregon Field (750)

GEORGE FOX SINGLE-SEASON RECORDS

INDIVIDUAL BATTING

Batting Avg. (50 AB min.)

.537	Mick Gwilym	1971
.500	Kelly Champ	1976
.434	Miguel Rivera	1990
.426	Miguel Rivera	1989
.426	Keven Bottenfield	1986
.412	Aaron Knotts	1994
.410	Keven Bottenfield	1985
.403	Chris Wakeland	1994
.402	Fernando Pol	1992
.401	Tony Robertson	1993

At Bats

184	Mike Nadeau	1994
176	Adam Kershaw	1994
170	Aaron Knotts	1994
170	Ryan Corey	1995
167	Marty Beyers	1995
164	Tony Iranshad	1995
160	Gary Boyer	1991
160	Kevin Watson	1994
158	Tony Spencer	1992
159	Mike Thompson	1994

Hits

70	Aaron Knotts	1994
67	Mike Nadeau	1994
63	Marty Beyers	1995
59	Mike Thompson	1994
58	Mike Nadeau	1993
58	Chris Wakeland	1994
56	Ryan Muñoz	1996
55	Tony Robertson	1993
53	Fernando Pol	1992
53	Adam Kershaw	1994

Games

47	Tony Spencer	1992
45	Matt Capka	1992
45	Sean Bahrt	1992
45	Gary Boyer	1991
44	10 Players	

Runs

59	Mike Nadeau	1993
56	Mike Thompson	1994
54	Mike Nadeau	1994
47	Jeff Janosky	1996
46	Aaron Knotts	1994
44	Marty Beyers	1995
43	Gary Boyer	1991
40	Dan Stupur	1989
40	Mike Nadeau	1992
40	Chris Wakeland	1994

Doubles

20	Gary Boyer	1991
16	Keven Bottenfield	1985
15	Aaron Knotts	1994
13	Joe Gordon	1995
14	Dan Stupur	1989
14	Chris Wakeland	1994
13	Brandon Crosier	1992
12	Matt Capka	1993
12	Mike Thompson	1994
12	Ryan Corey	1995

Triples

8	Chris Wakeland	1994
5	Mike Thompson	1994
4	Dan Stupur	1989
4	Mike Nadeau	1994
3	Dave Morgan	1971
3	Wade Witherspoon	1981
3	Matt Capka	1993
3	Adam Kershaw	1994
3	Ryan Corey	1995

Home Runs

12	Fernando Pol	1992
10	Kevin Watson	1994
8	Ryan Corey	1995
8	Aaron Knotts	1994
8	Jeff Janosky	1996
7	Gayle Beebe	1981
7	Phil Marchant	1988
7	Kevin Kvarnstrom	1990
7	Josh Gilbert	1993
7	Joe Gordon	1995



Fernando Pol

RBIs

51	Fernando Pol	1992
50	Dan Stupur	1989
49	Kevin Watson	1994
48	Josh Gilbert	1993
47	Chris Wakeland	1994
46	Aaron Knotts	1994
46	Adam Kershaw	1994
40	Kevin Kvarnstrom	1991
38	Mike Thompson	1994
37	Mike Nadeau	1993
37	Jeff Janosky	1996

Stolen Bases

28	Mike Nadeau	1994
28	Mike Thompson	1996
25	John Votaw	1982
19	Mike Nadeau	1993
16	Mike Nadeau	1992
16	Miguel Rivera	1989
15	John Votaw	1984
15	Dan Stupur	1989
14	Mike Thompson	1994
10	Gary Boyer	1990
10	Tony Robertson	1993

Strikeouts

42	Jeff Janosky	1995
40	Rob Hoover	1995
30	Mike Thompson	1994
28	Ryan Corey	1995
27	Ryan Corey	1994
27	Aaron Jaramello	1995
26	Joe Gordon	1995
25	Adam Kershaw	1994
24	Tony Downs	1990
24	Josh Gilbert	1993
24	Kevin Watson	1994

Base on Balls

40	Chris Wakeland	1994
39	Jeff Janosky	1996
35	Jeff Jaramello	1995
32	Jeff Janosky	1995
31	Kevin Goodman	1989
29	Hector Velez	1988
29	Adam Kershaw	1994
28	Fernando Pol	1992
28	Davin Miyamura	1993
28	Mike Thompson	1994
26	Miguel Rivera	1989
26	Fernando Pol	1993

TEAM BATTING

Batting Avg.	.337	1975
Hits	495	1994
Runs	397	1994
Doubles	100	1994
Triples	30	1994
HRs	45	1994
RBI	373	1994
Stolen Bases	73	1994
At Bats	1,502	1994

Season Batting Averages

1996	.312	1989	.330
1995	.279	1988	.306
1994	.330	1987	.305
1993	.313	1986	.290
1992	.306	1985	.296
1991	.303	1984	.257
1990	.306	1983	.248



*1994 All-American
Mike Thompson*

GEORGE FOX SINGLE-SEASON RECORDS

INDIVIDUAL PITCHING

Innings Pitched

86.33	Clark Anderson	1993
78.67	Greg Mozel	1985
77.33	Troy Schrenk	1996
76.67	Danny Graham	1995
76.67	Nathan Barnett	1996
73.33	Rob Gehrke	1992
73.33	John Nichols	1989
70.67	Rod Jackson	1988
70.33	Jeremy Greene	1994
69.00	Chris Anderson	1986
68.67	Troy Schrenk	1994
68.33	Nate Fast	1995

Games

17	Vincent DeJoia	1991
17	Will Clark	1995
16	Tom Bohlman	1992
16	J.R. Cock	1991
16	Kevin Lucke	1987
16	Clark Anderson	1993
16	Tom Bohlman	1993
16	Mark Andersen	1994
16	Nate Fast	1996
15	Six Players	

Wins

8	Troy Schrenk	1994
7	Jeremy Greene	1994
7	Nathan Barnett	1996
7	Ryan Muñoz	1996
6	Kevin Lucke	1988
6	John Nichols	1989

6	Rob Oliver	1990
6	Clark Anderson	1992
6	Clark Anderson	1993
5	Eight players	

Strikeouts

65	John Nichols	1989
60	Rob Gehrke	1992
60	Troy Schrenk	1994
52	Rob Gehrke	1993
49	Jeremy Greene	1994
44	Kevin Calaba	1995
44	Nathan Barnett	1996
43	Rob Oliver	1991
43	Ed McClellan	1991
43	Rod Jackson	1988
43	Troy Schrenk	1996
42	Todd Miller	1984

ERA (Min. 30 IP)

0.89	Dave Scarth	1981
1.88	Nathan Barnett	1996
2.05	Jeremy Greene	1994
2.54	Dave Callaghan	1981
2.56	Tom Evans	1981
2.62	Ryan Muñoz	1996
2.83	Will Clark	1995
3.02	Rob Oliver	1991
3.11	Jason Williams	1991
3.13	Clark Anderson	1993
3.15	Troy Schrenk	1994
3.18	Jason Williams	1992



Tom Bohlman

Complete Games

6	Kevin Lucke	1988	2.79	Nate Fast	1996
6	John Nichols	1989	3.01	Kevin Lucke	1988
6	Rob Gehrke	1992	3.14	Troy Schrenk	1996
6	Clark Anderson	1993	3.18	Rob Oliver	1991
6	Rob Gehrke	1993	3.30	Vincent DeJoia	1992
6	Jeremy Greene	1994			
6	Nate Barnett	1996			
4	Rob Oliver	1991			
4	Ed McClellan	1991			

Saves

4	Tom Bohlman	1993
2	Vincent DeJoia	1991
2	Troy Schrenk	1996
2	Will Clark	1996

Strikeouts per 9 innings (30-inning min.)

10.53	Mark Andersen	1994
7.98	John Nichols	1989
7.92	Troy Schrenk	1994
7.39	Rob Gehrke	1992
7.30	Rob Gehrke	1993
7.13	Vincent DeJoia	1991
6.67	Ed McClellan	1991
6.51	Rob Oliver	1991
6.42	Kevin Calaba	1995
6.29	Jeremy Greene	1994

Walks per 9 innings (30-inning min.)

1.70	Ryan Muñoz	1996
2.20	Clark Anderson	1993
2.34	John Nichols	1989
2.47	Nathan Barnett	1996
2.67	Clark Anderson	1992

TEAM PITCHING

GP	47	1992
IP	369	1992
ERA	3.44	1992
SO	254	1991
SHO	8	1992
Fewest BB per 9 inn.	3.08	1996

Earned Run Average

1996	3.82	1989	4.43
1995	5.83	1988	4.96
1994	4.12	1987	6.51
1993	4.24	1986	5.82
1992	3.44	1985	6.79
1991	3.98	1984	7.79
1990	4.67		



1921 George Fox baseball team
(formerly Pacific College)

A C C O L A D E S



1994 NAIA District 2 Player of the Year Mike Nadeau was drafted by the Baltimore Orioles.

Keven Bottenfield	C	NAIA District 2 First Team	1985,'86
		All-Independent League	1985
		Timber-Prairie League First Team	1986
Gene Christian	U	NAIA District 2 Second Team	1985
		All-Independent League	1985
Dean Boening	OF	NAIA District 2 Second Team	1985
		All-Independent League	1985
David Chambers	OF	All-Independent League	1985
Mike Williams	OF	All-Independent League	1985
		Timber-Prairie League Second Team	1986
Matt Nosack	IF	Timber-Prairie League Hon. Ment.	1986
Marce Sellas	OF	Timber-Prairie League Hon. Ment.	1986
		Independent League First Team	1987
Chris Anderson	P	Timber-Prairie League Hon. Ment.	1986
Hector Velez	IF	Timber-Prairie League Hon. Ment.	1986
		Independent League First Team	1987
Rudy Barcarse	DH	Independent League First Team	1987
Kevin Lucke	P	Independent League Second Team	1987
		Metro-Valley First Team	1988
Dave McKinney	U	Independent League Second Team	1987
		Metro-Valley Second Team	1988
Miguel Rivera	IF	NAIA District 2 First Team	1988,'89,'90,'91
		Metro-Valley League First Team	1988,'89,'90,'91
		Metro-Valley Player of the Year	1990,'91
		NAIA All-American Hon. Ment.	1989
Frank Wakayama	OF	NAIA District 2 First Team	1988,'90
		Metro-Valley League First Team	1988,'90
Scott Rader	P	Metro-Valley League First Team	1988
	OF	Metro-Valley League First Team	1990
Fernando Pol	OF	Metro-Valley League Second Team	1988
	DH	Metro-Valley League First Team	1991,'92
		NAIA District 2 Hon. Ment.	1991
		NAIA District 2 First Team	1992
		Metro-Valley Player of the Year	1992
Darryl Brown	P	Metro-Valley League First Team	1989
Dan Stupor	IF	NAIA District 2 First Team	1989
Steve Lampkin	C	Metro-Valley League First Team	1989,'90,'91,'92
		NAIA District 2 Honorable Ment.	1992
Kevin Goodman	IF	Metro-Valley League First Team	1989,'90
Dino Fiarito	U	Metro-Valley League First Team	1989,'91
		NAIA District 2 Honorable Ment.	1991
Chris Berg	P	Metro-Valley League Second Team	1989
Gary Boyer	OF	NAIA District 2 First Team	1990,'91
		Metro-Valley League First Team	1990,'91
Ed McClellan	P	Metro-Valley League First Team	1990,'91
		NAIA District 2 Honorable Ment.	1991
Rob Oliver	P	Metro-Valley League First Team	1990,'91
		NAIA District 2 Honorable Ment.	1991
Kevin Kvarnstrom	IF	Metro-Valley League First Team	1990,'91
		NAIA District 2 Honorable Ment.	1991
Matt Capka	IF	NAIA District 2 Honorable Ment.	1991,'92
		Metro-Valley League First Team	1991,'92
		NAIA National Player of the Week	5/3-8/'93
Sean Bahrt	OF	NAIA District 2 Honorable Ment.	1991,'92
		Metro-Valley League First Team	1991,'92
Steve Mills	P	Metro-Valley League First Team	1991
Jim Richardson	IF	Metro-Valley League Hon. Ment.	1991
Jason Williams	P	Metro-Valley League Hon. Ment.	1991
		NAIA District 2 Honorable Ment.	1992
		Metro-Valley League First Team	1992
Mike Nadeau	IF	NAIA District 2 Honorable Ment.	1992
		Metro-Valley League First Team	1992
		NAIA District 2 First Team	1993,'94
		Cascade League First Team	1993,'94
		NAIA District 2 Player of the Year	1994
		Cascade Conference Co-Player of the Year	1994
Brandon Crosier	OF	NAIA District 2 Honorable Ment.	1992
		Metro-Valley League First Team	1992
		Cascade League Honorable Ment.	1993
Tony Spencer	OF	NAIA District 2 Honorable Ment.	1992
		Metro-Valley League First Team	1992
Clark Anderson	P	NAIA District 2 Honorable Ment.	1992,'93
		Metro-Valley League First Team	1992
		Cascade League Honorable Ment.	1993
Rob Gehrke	P	NAIA District 2 Honorable Ment.	1992
		Metro-Valley League First Team	1992
Tom Bohlman	P	NAIA District 2 Honorable Ment.	1992
		Metro-Valley League First Team	1992
Gage Campbell	DH	Metro-Valley League Second Team	1992
Vincent DeJoia	P	Metro-Valley League Second Team	1992
Brent Gruber	P	Metro-Valley League Second Team	1992
Darrell Dirks	P	Metro-Valley League Hon. Ment.	1992
Josh Gilbert	IF	NAIA District 2 First Team	1993
		Cascade League First Team	1993

ACCOLADES

Tony Robertson	DH	NAIA All-American Hon. Ment. NAIA District 2 First Team Cascade League First Team	1993 1993 1993
Aaron Knotts	IF	NAIA District 2 First Team Cascade Conference First Team	1994 1994
Adam Kershaw	IF	NAIA District 2 First Team Cascade Conference First Team	1994 1994
Chris Wakeland	OF	NAIA District 2 First Team Cascade Conference First Team	1994 1994
Michael Thompson	OF	NAIA All-American Hon. Ment. NAIA All-Far West Region NAIA District 2 First Team Cascade Conference First Team Northwest Conference First Team	1994 1994 1994 1994 1996
Jeremy Greene	P	NAIA District 2 First Team Cascade Conference Pitcher of the Year Cascade Conference First Team	1994 1994 1994
Troy Schrenk	P	NAIA District 2 First Team Cascade Conference First Team	1994 1994
Ryan Corey	C	Cascade Conference First Team Cascade Conference Hon. Ment. Northwest Conference Hon. Ment.	1994 1995 1996
Kevin Watson	OF	Cascade Conference Hon. Ment.	1994
Mark Andersen	P	Cascade Conference Hon. Ment.	1994
Phil Lyman	P	Cascade Conference Hon. Ment.	1994
Tony Iranshad	IF	Cascade Conference Hon. Ment.	1995
Ryan Muñoz	U	Cascade Conference Hon. Ment. Northwest Conference First Team	1995 1996
Marty Beyers	IF	Cascade Conference Hon. Ment.	1995
Danny Graham	P	Cascade Conference Hon. Ment.	1995
Jeff Janosky	OF	Northwest Conference First Team	1996
Nate Barnett	P	Northwest Conference First Team	1996



1989 All-American Miguel Rivera



George Fox occasionally enlists the help of Precision Helicopters Inc. of Newberg to keep its fields dry and playable.

HISTORY

1996 Season Game-By-Game Results

DATE	W/L	SCORE	Record
2-24	W	GF 4, Western Oregon 3	1-0
2-24	W	GF 4, Western Oregon 3	2-0
3-1	W	GF 9, Eastern Oregon 5	3-0
3-1	W	GF 5, Eastern Oregon 2	4-0
3-2	W	GF 10, Whitman 2	5-0
3-2	L	GF 2, Pacific 7	5-1
3-8	L	GF 2, Oregon State 13	5-2
3-12	W	GF 12, Western Baptist 8	6-2
3-12	W	GF 8, Western Baptist 1	7-2
3-13	L	GF 4, Western Oregon 8	7-3
3-16	W	GF 5, Puget Sound 2	8-3
3-16	W	GF 6, Puget Sound 5	9-3
3-23	L	GF 2, Western Oregon 9	9-4
3-23	L	GF 1, Western Oregon 6	9-5
3-24	W	GF 14, Willamette 5	10-5
3-24	L	GF 0, Willamette 3	10-6
3-28	W	GF 17, Puget Sound 1	11-6
3-29	L	GF 10, Central Wash. 11	11-7
3-29	L	GF 4, Central Wash. 7	11-8
3-30	L	*GF 5, Whitworth 7	11-9
3-30	W	*GF 13, Whitworth 2	12-9
3-31	L	*GF 4, Whitworth 14	12-10
4-2	L	GF 9, Western Oregon 13	12-11
4-5	L	*GF 5, Pacific Lutheran 6	12-12
4-6	W	*GF 12, Pacific Lutheran 7	13-12
4-14	W	*GF 6, Whitman 2	14-12
4-14	W	*GF 18, Whitman 0	15-12
4-15	W	*GF 11, Whitman 2	16-12
4-20	W	*GF 5, Pacific 1#	17-12
4-21	L	*GF 8, Pacific 9 (14)#	17-13
4-27	L	*GF 1, Linfield 2 (14)	17-14
4-27	W	*GF 3, Linfield 1	18-14
4-28	W	*GF 7, Linfield 3	19-14
5-3	W	*GF 10, Pacific 4	20-14
5-5	W	*GF 2, Willamette 1	21-14
5-5	W	*GF 10, Willamette 8	22-14
5-6	W	*GF 12, Willamette 2	23-14
5-11	W	*GF 4, Lewis & Clark 2	24-14
5-11	W	*GF 8, Lewis & Clark 3	25-14

NAIA Far West Regional Tournament

5-14	L	GF 4, Lewis-Clark St. 18	25-15
5-15	L	GF 0, Pt. Loma Nazarene 3	25-16

* Northwest Conference Contest

at The Dalles, Ore.

Bold = Home Games



1994 All-American Tony Robertson

TEAM RECORDS

Year	Record	Coach
1996	25-16	Pat Bailey
1995	15-29	Jeff Hollamon
1994	31-13	Pat Casey
1993	26-16-1	Pat Casey
1992	29-18	Pat Casey
1991	24-21	Pat Casey
1990	24-17	Pat Casey
1989	22-14	Pat Casey
1988	15-14	Pat Casey
1987	7-13-1	Paul Berry
1986	5-23	Paul Berry
1985	14-19	Paul Berry
1984	2-22	W. Witherspoon
1983	3-24	W. Witherspoon
1982	5-25	Ed Fields
1981	11-31	Larry LaBounty
1980	10-19	Larry LaBounty
1979	6-28	Craig Taylor
1978	10-19	Craig Taylor
1977	7-19	Craig Taylor
1976	10-13	Craig Taylor
1975	7-7	Craig Taylor
1974	8-4	Craig Taylor
1973	3-11	Bob Brown
1972	13-8	Bob Brown
1971	10-11	Bob Brown
1970	N/A	Jerry Louthan
1969	0-19	David Berg
1968	4-12	Terry Haskell
1967	4-12	Terry Haskell
1966	1-16	Terry Haskell
1965	4-6	Terry Haskell
1964	0-10	Terry Haskell
1963	4-4	Nigel Shockey
1961	2-6	Carl Carpenter
1960	3-3	Carl Carpenter
1959	N/A	Carl Carpenter
1958	6-4	Carl Carpenter
1957	5-12	Ralph Beebe
1956	3-9	Ralph Beebe
1955	1-7	Barney McGrath

GEORGE FOX MOST VALUABLE PLAYERS

1996	Nate Barnett
1995	Not Given
1994	Mike Nadeau
1993	Mike Nadeau
1992	Fernando Pol
1991	Miguel Rivera and Gary Boyer
1990	Miguel Rivera and Gary Boyer
1989	Dan Stupur and Miguel Rivera
1988	Frank Wakayama
1987	Marce Sellas
1986	Keven Bottenfield
1985	Keven Bottenfield
1984	John Votaw
1983	Tom Evans
1982	Dave Case
1981	Gayle Beebe
1980	Steve Hilgendorf

GEORGE FOX MORSE FIELD RECORDS

1996	14-1
1995	6-10
1994	12-0
1993	7-1
1992	13-5
1991	11-3
1990	7-2
1989	12-3

CURTIS AND MARGARET MORSE COMPLEX

George Fox University baseball, soccer and softball teams have played home games on the Curtis and Margaret Morse Athletic Complex since 1989.

Across from Wheeler Sports Center on Fulton Street and Villa Road, the complex was renovated using a donation from Curtis and Margaret Morse. Using labor from Volunteers on Wheels, new dugouts and a press box were constructed for the baseball field.

The Morse family has a long association with George Fox. Four generations have attended the Newberg school.

The baseball diamond was moved to the current location in the early '80s when construction on Bauman

Auditorium displaced the old field.

The baseball facility continues to improve. In 1991, Smurfit Newsprint Corp., Newberg, donated all lumber for an indoor hitting facility located in the northwest corner of the complex.

The baseball Bruins are tough to beat at Morse Field. Between 1991 and 1994, George Fox lost just twice in Newberg to an NAIA opponent, and the Bruins were 14-1 in Newberg last year.

Field dimensions are 335 feet down the left-field line, 375 in the left-center-field alley, 400 to straight-away center, 370 in right center and 330 down the right-field line.

MEDIA INFORMATION

The George Fox University Sports Information Office always is interested in assisting members of the media in their coverage of Bruin baseball. Publicity and media information for the George Fox baseball team are handled by Sports Information Director Rob Felton.

Photographs, feature ideas and statistics are available from the Sports Information Office, located in the President's Office on the corner of River and Sheridan streets. For interviews, contact Felton at 503/538-8383 ext. 2127.

BRUINS IN THE PROS

<i>Year</i>	<i>Name</i>	<i>Pos.</i>	<i>Original Organization</i>
1996	Chris Wakeland (OSU)	OF	Detroit Tigers
1994	Mike Nadeau	Inf	Baltimore Orioles
1994	Kevin Watson	OF	San Francisco Giants
1994	Mark Andersen	P	Florida Marlins
1993	Clark Anderson	P	San Francisco Giants
1992	Steve Lampkin	C	Montreal Expos
1992	John Avery	P	Atlanta Braves
1992	Scott Englehart	P	Florida Marlins
1992	Chris Berg (UW)	P	New York Mets
1991	J.R. Cock	P	California Angels
1991	Steve Mills	P	Pocatello Pioneers
1989	Dan Stupur	Inf	Los Angeles Dodgers
1986	Keven Bottenfield	C	Montreal Expos
1980	Dave LaBounty	P	Pittsburgh Pirates

NEWS MEDIA

PRINT MEDIA

The Oregonian
Portland
Dennis Peck
Ryan Peck
Justin Hagey
Fax: 503/221-8168
1-800-452-1420

Statesman-Journal
Salem
James Bennett
Capi Lynn
Fax: 503/399-6706
1-800-556-3975

The Graphic
Newberg
James Hill
Fax: 503/538-1632
503/538-2181

WIRE SERVICE

Associated Press
Fax: 503/228-5514
1-800-448-3501

TELEVISION

KATU
(ABC, Ch. 2)
503/231-4263

KGW
(NBC, Ch. 8)
503/226-5119

KOIN
(CBS, Ch. 6)
503/464-0640

KPTV
(Independent, Ch. 12)
503/230-1200

RADIO

KEX
(1190 AM)
503/225-1190

KFXX
(1520 AM)
503/223-1441

KLYC
(1260 AM)
503/472-1260

NAIA HOTLINE
918/496-2226

NAIA OFFICE
918/494-8828

CREDITS

The 1997 George Fox baseball media guide is a production of the George Fox Sports Information Office. Copy was compiled and written by Rob Felton, sports information director, with assistance from Scott Wade, student assistant. Design by Felton; layout and typesetting by Carrie Marsh, publications assistant. Photography by Anita Cirulis, director of publications. Printing by Barclay Press, Newberg.

1997 BASEBALL SCHEDULE

FEBRUARY

Sat	22	at University of Portland (1)	1:00
Thur	27	at Hawaii Pacific (1)	11:00
Fri	28	at Hawaii Pacific (1)	7:05

MARCH

Sat	1	at Hawaii Pacific (2)	5:00
Fri	7	Albertson (1)#	2:00
Fri	7	Eastern Oregon (1)#	5:00
Sat	8	Central Washington (1)#	10:00
Sat	8	Northwest Nazarene (1)#	1:00
Sun	9	Whitworth (1)#	10:00
Sat	15	at Whitworth (2)*	12:00
Sun	16	at Whitworth (1)*	12:00
Sat	22	LINFIELD (2)*	1:00
Sun	23	at Linfield (1)*	2:00
Wed	26	at Concordia (1)	3:00
Fri	28	WHITMAN (1)*	3:00
Sat	29	WHITMAN (2)*	12:00

APRIL

Tue	1	at Western Oregon (1)	3:00
Fri	4	CENTRAL WASHINGTON (1)	3:00
Sat	5	CENTRAL WASHINGTON (2)	1:00
Mon	7	ALBERTSON (1)	3:00
Sat	12	at Lewis & Clark (2)*	1:00
Sun	13	LEWIS & CLARK (1)*	2:00
Tue	15	CONCORDIA (1)	3:30
Sat	19	WILLAMETTE (2)*	1:00
Sun	20	at Willamette (1)*	1:00
Tue	22	WESTERN OREGON (1)	3:00
Sat	26	at Puget Sound (2)*	1:00
Sun	27	PUGET SOUND (1)*	3:00

MAY

Fri	2	PACIFIC (1)*	4:00
Sat	3	at Pacific (2)*	1:00
Fri	9	PACIFIC LUTHERAN (2)*	1:00
Sat	10	at Pacific Lutheran (1)*	2:00
Tue-Sat	13-17	Far West Regionals	TBA
Fri-Sat	23-31	NAIA World Series (Sioux City, Iowa)	TBA

*Home games in bold caps. *Conference games.
#Albertson College of Idaho Tournament.
Home games played on Morse Athletic Field.*