

1981

1981 Program

George Fox University Archives

Follow this and additional works at: https://digitalcommons.georgefox.edu/athletics_menbasketball

Recommended Citation

George Fox University Archives, "1981 Program" (1981). *Men's Basketball*. 136.
https://digitalcommons.georgefox.edu/athletics_menbasketball/136

This Program is brought to you for free and open access by the George Fox University Athletics at Digital Commons @ George Fox University. It has been accepted for inclusion in Men's Basketball by an authorized administrator of Digital Commons @ George Fox University. For more information, please contact arolfe@georgefox.edu.



BRUIN BASKETBALL

GEORGE FOX COLLEGE
'BRUINS'

VS

COLLEGE OF GREAT FALLS
'ARGONAUTS'

December 11, 1981
7:30 p.m.

Miller Gymnasium
Wheeler Sports Center
Newberg, Oregon



Team Captain
Senior Forward Mike Royer

WELCOME TO GEORGE FOX COLLEGE'S COLEMAN H. WHEELER SPORTS CENTER

CONTAINING THE JAMES AND LILA MILLER GYMNASIUM

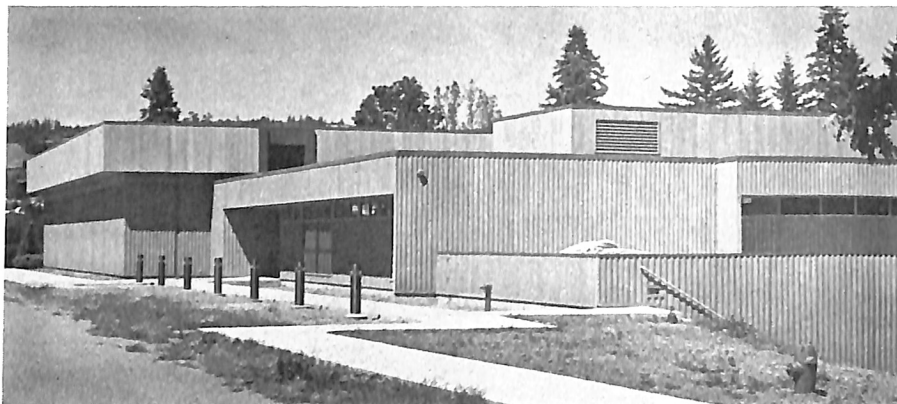
George Fox College begins its fifth year in the Coleman H. Wheeler Center for Sports and Physical Education. Completed in June 1977, the \$2.7 million, 55,000-square-foot complex is the college's largest building. It contains the James and Lila Miller Gymnasium, the Bruin home court.

The sports center was designed by noted architect Pietro Belluschi, with a wooded canyon setting chosen as the center's location. The building features wood products and a large window area overlooking the adjacent natural terrain.

Three times larger than Hester Gymnasium, which it replaced, the Wheeler Center features a 116x174-foot gymnasium with three basketball courts and seating for 2,700 spectators. The gymnasium ceilings are 32 feet over the hardwood maple floor. The gym provides three volleyball courts and five badminton courts.

The building is entered on two levels—ground level on the east side through nine doors for the general public and after crossing a 200-foot bridge; and on the second floor on the west side for campus personnel. There is a two-floor lobby featuring oak parquet floors.

Contained on the upper level are athletic administration and faculty offices, staff room, and class, weight, and multipurpose rooms.



The lower level contains a concession area and ticket sales area, dressing rooms, team rooms, equipment-issuing room, laundry, and storage space. An east wing of the building houses two handball courts.

The building is named for long-time Oregon lumberman Coleman H. Wheeler, former chairman of the board of Willamette Industries. The gymnasium is named for board member James Miller and his wife Lila. He is the former president of Cascadia Lumber Co. The building was dedicated Oct. 17, 1977.

BUY WISE DRUG

NEWBERG

For All Your Drug Store Needs

538-2012

**Shear
Perfection**



409 N. Washington
538-6112

Maytag • Kelvinator • Whirlpool
Amana • Speed Queen • KitchenAid
Hoover • Litton • Jenn-Air

KROHN'S APPLIANCE CENTER

We Service All Makes • New and Used

Authorized Dealer 315 East First Street
Phone 538-3613 Newberg

HOPP INSURANCE AGENCY

Ray Hopp • Randy Hopp



804 E. First St., Newberg, Oregon
Phone 538-3421

Grrreat!



**INVESTMENTS IN
YOUR FUTURE**

Homes
Acreage
Farms
Rentals
Commercial

1805 Portland Road
Newberg, Oregon
538-3188

NEWBERG REALTY INC.



NEWBERG STATE BANK

1815 Portland Rd.
Newberg, OR 97132
Phone (503) 538-1318

MEMBER FDIC



Two Locations

Springbrook Plaza
Newberg
538-5522

Sherwood Plaza
Sherwood
625-5008

Hours: Mon.-Thurs. 10:00 a.m.-8:00 p.m.
Fri. 10:00 a.m.-9:00 p.m.; Sat. 10:00 a.m.-6:00 p.m.



HORSESHOEING



Quick Dependable Service
All Types
Normal and Pad Work
Emergency Shoeing Also

Active Member
Oregon Farriers Assn.

Leonard Slocum
538-5431

ABOUT GEORGE FOX COLLEGE

George Fox College is the outgrowth of a desire by early Willamette Valley Quaker settlers who established Pacific Academy in 1885 for the Christian education of their children. The college division was organized in 1891 to provide more advanced instruction for students. In 1949, because of the many colleges in the Northwest with Pacific in their name, the college was renamed George Fox in honor of the founder of the Friends (Quaker) Church. The college is governed by a 42-member Board of Trustees elected by Northwest Yearly Meeting of Friends Church, which comprises more than 8,500 members in 56 churches in Oregon, Washington, and Idaho.

Today the 60-acre rural, tree-shaded campus a half-hour drive from Portland is undergoing a major expansion with eight new buildings completed in the last four years with total investment of more than \$7 million.

College enrollment is at a record 750. The college has grown for nine consecutive years, increasing by 75 percent in that span.

Accredited by the Northwest Association of Secondary and Higher Schools, the college offers 20 majors in six divisions: Education, Fine and Applied Arts, Language Arts, Natural Science, Religion, and Social Science. George Fox is one of 13 members of the national Christian College Consortium. The college has a student-faculty ratio of 16/1, with about 55 percent of faculty members having doctorates.

George Fox students come from 21 states and 3 foreign countries. Nearly 40 religious denominations are represented on campus.

GFC ATHLETICS

Intercollegiate athletics is an integral part of the overall education program at George Fox. Men's varsity athletic teams represent the college in baseball, basketball, track, and cross-country.

George Fox College competes as an independent on the varsity level. Its schedules are coordinated with the Northwest Conference and with other independents in the Northwest. George Fox is a member of the National Association of Intercollegiate Athletics (NAIA), District 2, and the National Christian College Athletic Association.

Women students compete in volleyball, cross-country, basketball, tennis, track, and softball. The college is a member of the Women's Conference of Independent Colleges and the Northwest College Women's Sports Association.

For students not participating in the varsity program, GFC has a complete intramural program including flag football, basketball, volleyball, softball, and tennis.

Athletic facilities include the Coleman H. Wheeler Center for Sports and Physical Education; Colcord Field, which includes a football/soccer field and new all-weather rubberized track; and tennis courts. A new athletic field complex containing baseball diamond, two softball fields, soccer field, and archery range is under construction, to be completed this school year.

Wheeler Center, completed in 1977 in a \$2.7 million project, includes the James and Lila Miller Gymnasium with three basketball courts and seating for up to 2,700; multi-purpose, class, and weight rooms; faculty and administrative offices; handball courts; dressing and therapy rooms.

Complete Dry Cleaning Services

One Hour
"MARTINIZING"

Certifies
THE MOST IN DRY CLEANING
2101 Portland Road • Ph. 538-2196 • Newberg
"Dry cleaning—a Quaker tradition"

2800 Orchard Ave.
McMinnville
(503) 472-2105
DIVISION OF
COMMODORE HOME
SYSTEMS INCORPORATED



ROBERTS RENT-ALL, INC. Equipment Rentals

300 WEST HANCOCK ST.
NEWBERG, OREGON 97132



Michael D. Roberts
Beth A. Roberts

Telephone
538-8327



The store with the
Extra Touch!

Make a Fashion Statement
with a gift for her from
1893

SPRINGBROOK PLAZA
Mon.-Fri. 10-9:00, Sat. 10-5:30, Sun. 12-5:00

Bellows & Potts chimney sweeps



Portland:
253-1897

Newberg:
538-8030
after 5 p.m.

\$5.00 off with
this ad



MARTY'S CHEVRON

1004 E. First St.
Newberg, Ore.
538-4013



DAVE'S CEMENT CONTRACTING, INC.

Residential and Commercial Contractors
538-7394

DAVID L. RICHARD 406 N. MAIN
OWNER P.O. BOX 31
RES. 538-4801 NEWBERG, OR 97132

KOZY KORNER MARKET

24 Hr. Market
115 N. Main St.
Newberg, Ore.
538-5888

1981-82 BRUIN SCHEDULE



NOVEMBER-DECEMBER 1981

						28
						Willamette
29	30 Columbia Christian	1	2	3	4	5
						Tip-Off at Concordia
6	7	8 Linfield	9	10	11 College of Great Falls	12 Pacific
13	14 Seattle University	15	16 Western Washington	17	18	19
						George Fox Tourney
20	21	22	23	24	25	26
27	28	29	30	31		

JANUARY 1982

						1	2 Lewis & Clark
3	4	5 Linfield	6	7	8	9	10
10	11	12	13	14	15 College of Idaho	16	17 NNC
17	18 Eastern Oregon	19	20 Willamette	21	22 Warner Pacific	23	24 Western Oregon
24	25	26	27 Judson Baptist	28	29 Columbia Christian	30	31 EOSC Homecoming

FEBRUARY-MARCH 1982

31	1	2 Concordia	3	4	5	6	7
7	8	9 Judson Baptist	10	11	12 Western Baptist	13	14 Warner Pacific
14	15	16 Western Baptist	17	18	19 College of Idaho	20	21 NNC
21	22	23	24 District Playoffs	25	26	27	28 District Playoffs
28	1	2 District Playoffs	3	4	5	6	
7	8-13 NAIA Nationals			11-13 National Christian College Athletic Assn. Dist. Playoffs, Newberg			

Buckley Insurance Agency



Raymond Buckley
Dennis Buckley
538-5313



GO GET 'EM
BRUINS!

BILL PAGE CONSTR., INC.
1805 Portland Rd., Newberg
Phone: 538-2312



538-9469

Supporting the
Bruins

St. Paul Highway Newberg



G. D. Gerke, Prop.
538-4211
606 E. First Street, Newberg

THRIFTWAY
NEWBERG
THRIFTWAY
SPRINGBROOK
THRIFTWAY

A GREAT
CLIMAX
FOR THE SEASON

NUMBER 1 AT K.C.!

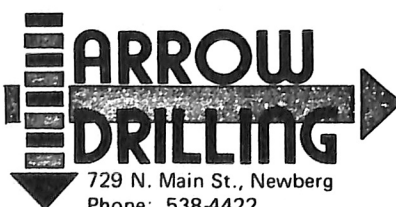


PEPSI-COLA BOTTLING CO.



Special
Events

Salem
363-9221



729 N. Main St., Newberg
Phone: 538-4422

Enjoy one of Oregon's
natural resources - Ground Water



IMPRESSIVE — both the Bruins
and the spirit behind Union 76!
700 N. College, Newberg
538-2513

GEORGE FOX COLLEGE 1981-82 BASKETBALL TEAM



Left to right: Mariani, Bieker, Madison, Meyers, J. R. Smith, Dunn, Almquist, E. Smith, Anderson, Barkdull, Wilson, Royer, Oliver. Coaches: Willard, Vernon

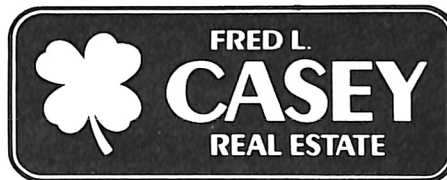
- 55 Units
- Direct Dial Phones
- Color TV
- Air Conditioning
- Pool • Guest Coffee
- Queen Long Boy Beds
- Water Beds
- Conference Room up to 65
- Laundry Facility Available



503-472-9493

2065 S. Hwy. 99W

McMinnville



Fred L. Casey, Broker
2414 Portland Rd.
538-7304

STEVESBACK TIRE

Sales

Service

Shocks • Alignment
Brakes • Batteries

211 W. 1st St., Newberg
Phone (503) 538-1313

Follow the
Bruins in the
Newberg Graphic

109 N. School St. • 538-2181

the HUB

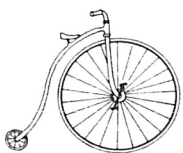
FAMILY APPAREL

Springbrook Plaza



**ST. PAUL
RODEO**

July 2-3-4
1982



**NEWBERG
BICYCLE ~ SHOPPE**

COMPLETE BICYCLING NEEDS

111 N. Blaine

MIKE & JANE GRANT

PEUGEOT
SEKAI
COLUMBIA

Phone 538-4574

**FTS FOWLER TIRE SERVICE
INC.**



PASSENGER • TRUCK • FARM • NEW TIRES
RETREADS • BATTERIES • BRAKES
SHOCKS • WHEEL ALIGNMENTS • TUNE-UPS

2305 Portland Rd. Newberg 538-2104

THE BRUIN NICKNAME

George Fox College is represented by the nickname and mascot "Bruin." But it's not always been so, even though it should have been.

The nickname comes from a real bear captured in 1887 just two years after Pacific Academy (the college's predecessor) was established. The small cub was captured in the coast range foothills west of Carlton when its mother was shot. The young cub was brought to campus by a student and later lived with a faculty member. When it grew to adulthood it was kept in a pit in what is now known as Hess Creek Canyon south of the campus. It escaped one too many times and was turned into steak for the dining table and the hide preserved on a frame and displayed in an early campus museum. When it deteriorated several years later, it was taken to a campus furnace room to be destroyed, but the framework proved a problem in dismantling, so it was left sitting in a corner. Students found the old Bruin skin later and began skirmishes over ownership, a tradition that continues 95 years later. "Bruin Junior," a replica, under a set of guidelines passed down for years, was fought over periodically in class competition with the class able to physically drag the Bruin replica off campus declared the rightful owner until next "flashed."

Even with the Bruin tradition, somewhere along the line, the "Quaker" tag to athletic teams came into popularity with sportswriters because of the college's church affiliation, and that nickname was used, along with a mascot "Foxy George," a little fox with a Quaker hat. Both gained acceptance for a period in the 1950s and 1960s until a vote of faculty, students, and administration in 1970 reinstated the Bruin nickname to its rightful place.

A LOOK AT THE PAST

The game of basketball was invented by Dr. James Naismith in 1891, and it took just seven years for it to be brought to George Fox College (then called Pacific College).

College board member and community leader T. W. Hester and others first saw the game played at the Portland YMCA. They were captivated by the new game and secured a ball, which they brought back to the college. The first exhibition game was played shortly thereafter, in the winter of 1898, and the first site was the third floor of the old Commercial Hotel on North Main Street because the college had no adequate space for the new sport.

The first gymnasium on the campus was the upper part of one wing of an old academy building (Hoover Hall), built in 1885 and torn down in the mid-1950s. A one-room wood gymnasium building was constructed in 1916 and served until 1946, when the college opened Hester Gymnasium, a concrete block structure built partly by student/faculty labor at a cost of \$40,000. The building, with a single hemlock playing floor and seating for 1,100, served through the 1976-77 season with opening of Wheeler Center.

College athletic affiliation in men's basketball over those years has gone from independent status to membership in the old Willamette Christian College Conference, the Metropolitan Conference, the Oregon Collegiate Conference, and back again to the present status as a major small college independent member of NAIA District 2 (joined in 1965). In 1973 George Fox was the district champion and has been in the district playoffs 9 of the last 11 years.



THE COMMERCIAL BANK

Best of Luck Bruins!

Member FDIC

Newberg Office — 112 N. College



- CARPETS • FURNITURE
- DRAPERIES ON LOCATION

MARION R. COMFORT
OWNER

Free Estimates
Satisfaction Guaranteed
FAMILY OWNED 538-8001
AND OPERATED ANYTIME

For all your floral needs—
large or small call

Gainer's Floral Shop

538-4077

206 N. Meridian
Newberg



"Sincerity"

Attrell's

FUNERAL CHAPEL—
BROWN FUNERAL HOME
207 Villa Road

Open Daily 24 Hours

Shari's

SHARI'S RESTAURANT

Sherwood Plaza 625-5510
Springbrook Plaza, Newberg
538-2194

Western Auto

Associate Store Home Owned
BILL FLATTERS, Owner

204 East First Street • Ph. 538-3711
NEWBERG, OREGON 97132

WE ACCEPT MASTERCARD & VISA

Curtis M. Pouliot, D.M.D.

601 Elliott Road
Newberg, Oregon
538-3129

Family Dentistry,
Including Orthodontics

Mel's Boot Shop & Shoe Repair

"We specialize in your
shoes and boots."

115 S. Washington St.

538-3985

TONIGHT'S TEAM ROSTERS

GEORGE FOX COLLEGE 'BRUINS'



... FROM NEWBERG, OREGON
Established in 1891. Enrollment 750
Colors: Old Gold and Navy Blue
Conference: Independent
1980-81 Record: 15-13
Head Coach: Sam Willard

No.	Name	Pos.	Ht.	Wt.	Age	Class	Exp.	Hometown (High School)
10	Danny Madison	F-G	6-4	165	18	Fr.	H5	Yorba Linda, Calif. (Whittier Christian)
12	Marc Mariani	G	5-8	150	19	So.	1V	Salem, Ore. (Sprague)
14	J. R. Smith	F-G	6-4	180	18	Fr.	H5	Gresham, Ore. (Sam Barlow)
20	Jeff Bieker	G	6-0	160	19	Fr.	H5	Portland, Ore. (Clackamas)
22	Jon Oliver	G	6-0	080	18	Fr.	H5	Boise, Idaho (Borah)
24	Mike Royer	F	6-2	175	21	Sr.	3V	Newberg, Ore. (Quincy, Wash.)
30	Tobi Wilson	G-F	6-2	195	21	Jr.	2JC	Red Bluff, Calif. (Red Bluff Union)
32	Rick Meyers	F	6-5	180	18	Fr.	H5	Milwaukie, Ore. (Clackamas)
34	Brian Barkdull	F	6-4	170	24	Jr.	2V	Dundee, Ore. (Borah, Boise)
40	Eric Smith	C	6-9	205	19	So.	1V	La Habra, Calif. (Whittier Christian)
42	Randy Dunn	F	6-5	205	20	So.	1V	Milwaukie, Ore. (Putnam)
50	Kris Anderson	F-C	6-6	200	18	Fr.	H5	Meridian, Idaho (Meridian)
52	Paul Almquist	C	6-8	220	19	So.	1V	Silverton, Ore. (Silverton)

COLLEGE OF GREAT FALLS 'ARGONAUTS'



... FROM GREAT FALLS, MONT.
Established in 1932. Enrollment 1,200
Colors: Blue and Gold
Conference: Frontier, NAIA
1980-81 Record: 27-6
Head Coach: Steve Aggers

No.	Name	Class	Pos.	Ht.	Wt.	Hometown (High School)
10	Jerry Moore	Sr.	F	6-3	170	Washington, D.C. (Kankakee, Ill. J.C.)
14	Kevin Fuller	Sr.	G	6-0	160	Sheridan, Wyo. (Sheridan J.C.)
20	Robin Tillman	Jr.	G	6-0	180	Ogden, Utah (Ben Lomond)
22	Ray Johnson	Jr.	G	6-0	175	Butte, Mont. (Central)
24	Vic Nevins	Jr.	F	6-3	175	Denver, Colo. (East)
30	Jerry Schmitz	So.	G	6-1	180	Aurora, Colo. (Aurora Central)
40	Stu Van Horn	Sr.	F	6-5	190	Costa Mesa, Calif. (Orange Coast J.C.)
42	Martin Jones	Jr.	F	6-4	210	Colorado Springs, Colo. (Northeastern)
44	Johnny Davis	So.	F	6-5	200	Denver, Colo. (Thomas Jefferson)
50	Chuck Felton	So.	C	6-9	215	Lakewood, Colo. (Green Mountain)
52	Doug Robison	Jr.	F-C	6-7	230	Billings, Mont. (Dawson, J.C.)
54	Tony Woodlee	Jr.	C	6-7	220	McMinnville, Tenn. (Warren County)



"Come In and Enjoy Our Warm Hospitality
and Friendly Service"
PIZZA, SALADS, SANDWICHES
ORDERS TO GO

1913 Portland Road

538-3800

George Fox College Bookstore

"Good Books Make Good Friends"

In Student Center 409 Carlton Way Ph. 538-8383, ext. 329

TONIGHT'S GAME

The Bruins tonight host for the first time in Miller Gymnasium the Argonauts of the College of Great Falls. It's GFC vs. CGF. The Montana-based team last season was co-champion of Frontier Conference with a 27-6 season mark that earned them runner-up spot in NAIA District 12. The Argonauts return 10 lettermen, and unlike the Bruins, have a wealth of talent, with nine juniors or seniors.

The Argos and the Bruins have met only once before in NAIA Competition, GFC winning 88-80 in 1972. George Fox brings a 2-3 mark into tonight's contest following a 102-86 loss Tuesday night in McMinnville to Yamhill County rival Linfield. The Wildcats may have changed coaches after 20 years, but not their style of play, and the Bruins coughed up the ball 31 times in turnovers, 22 times in the opening half as they fell behind 45-28.

Although Coach Sam Willard sat down his starters early on in the second half to allow his bench some game experience, the Bruins did show some bright spots, outrebounding their hosts 49-41, shooting with a better percentage (.492 to .483), and outscoring in the second half 58-57.

Freshman J.R. Smith led the Bruins in scoring with 15 and another Smith, Eric, led in rebounds with 10.

For the season the Bruins are averaging 70.0 points after five games, opponents 77.4. GFC is outrebounding its rivals by a 41.0 to 34.0 count. From the floor the Bruins are .450. They are .703 at the line. Eric Smith leads the way in scoring with a 17.2 average, followed by Randy Dunn at 14.8 and Mike Royer at 11.6. Dunn is averaging 9.8 rebounds a game. Eric Smith 9.0. Royer is averaging 4.4 assists a game, ahead of his career average of 4.1.

BRUIN RALLY SQUAD



Bruin Basketball cheers are led by a five-member squad, chosen by a student-faculty committee. The members are (left to right) Shawna Leazer, junior, Great Falls, Mont., Physical Ed. major; Ronda Stanhope, sophomore, Billings, Montana, major undecided; Cathy Madison, freshman, Rogue River, Ore., Business Management major; Dawn Wright, freshman, Medford, Ore., Elementary Ed. major; Lynne Ankeny, junior, Rockaway, Ore., Social Service major.

Salad Bar
and
Children's
Menu



2017 Portland Rd.
Newberg



215 Villa Road, Newberg
503-538-4311
"Something Special for Everyone"



**JEM
100**
"ICE CREAM
SALOON"

538-6191

208 N. Main St.



**PHOTOS
by Riley**

We Specialize in Weddings
and Portraits

538-4879

111 S. College

STOUFFER'S DEPARTMENT STORE

Newberg's Name Brand
Quality Store
Clancy and Mary Stouffer
Newberg Plaza
538-2790

FOR INVESTMENTS WITH A FUTURE . . .

*George
fox College
Foundation*

207 North Meridian Street • Newberg, Oregon 97132
Phone 503/538-7388

COACH SAM WILLARD



Sam J. Willard is in his sixth season at the George Fox basketball helm. In his first year Willard took the Bruins to a 20-9 record, the best ever in the school's history and the first time a 20-win season had been reached. The second season the Bruins posted a 15-14 record (16-13 on the court, but one game forfeited with an ineligible player). Both seasons the Bruins were in the

NAIA District 2 playoffs. Three seasons ago it was a different story as the Bruins dropped to a 9-20 record with injuries and personnel problems plaguing the efforts. In 1979-80 Willard guided the Bruins to an 18-12 record, the fourth best NAIA mark for GFC, and last year to a 15-13 season, both years again in the playoffs.

The Willard era began in May 1977, as he was named head basketball coach to replace Lorin Miller. He took over officially three months later, coming from Big Bend Community College in Moses Lake, Wash., where he had coached and served as athletic director for seven years.

Coaching has been Willard's background for the last 20 years. It's been impressive with an overall coaching record of 352 wins and 229 losses. In 1966 the Bruin mentor was Coach of the Year on the prep level in Idaho while he coached at Caldwell High. Willard guided basketball at Middleton from 1960 through 1965, then spent four years, until 1969, at Caldwell. His teams were in the state tour-

naments seven of those nine years, placing at least third each year. He coached his team to the state championship title twice, one year with an undefeated 27-0 mark.

Willard, 46 (June 4, 1935), has his own personal basketball mark, too. A graduate of Northwest Nazarene College in 1959, Willard, in a guard slot, helped the Crusaders to the NAIA national championship playoffs in 1957. A "preacher's kid," Willard played high school ball in Williston, North Dakota, where he was an All-State guard.

With a real concern for the individual as a person as well as a player, Willard, basically a quiet person, says he has only "total excitement and optimism" about the Bruin program.

Academically, Willard holds a master's degree from Central Washington State following summer sessions at Oregon State and Arizona State. That knowledge is used now as an associate professor of physical education on the GFC faculty. For five summers Willard was assistant director and athletic director for a Youth Conservation Camp in Moses Lake.

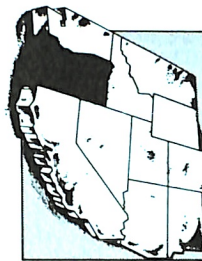
Willard has coached summer basketball camps and clinics in Washington, Oregon, and California. He had his own Mt. Shasta Camp in Northern California, assisted two summers with Portland Trail Blazer Coach Jack Ramsay's summer camps held on the George Fox campus, and in 1979-80 became owner and director of Perry's Basketball Camp, now in its 20th year.

Willard is an active Kiwanian and a member of the Church of the Nazarene. He and his wife Myrna, a Newberg kindergarten teacher, have four children: Sherelyn, 18, Samantha, 15, Buntly, 14, and Whitney, 13.



"in the alley"
So. of Commercial Bank Parking Lot

717 1/2 A-E, 1st Street • Newberg • 538-6061



Member FDIC

In the West
you're never
far from friendly,
hometown
service.



**TACO
TIME**

Any Time is Taco Time

Newberg—2009 Portland Rd.
Sherwood Plaza

BOYES CARPET CLEANING

BACKING THE BRUINS

Using the Hydra-Master
Cleaning Plant

Commercial • Residential
Call Anytime: 538-9455



516 East First in Newberg

SAGE RESTAURANT

FINE 'n FOXY

WILD HORSE

MOUNTAIN MARKET

RED HILLS POTTERY

by Donna Gettel

SHOWCASE II

COVER-UP CONSPIRACY

Monday-Friday 9:30-5:30 p.m.
Thursday Eve till 8:30 p.m.
Saturday 9:30-5:00 p.m.

Woe's Works

Deloris "Woe" Leavitt

*Custom Sewing
Alterations • Crafts*

809 E. First St. Newberg, OR 97132

Phone: 538-3231

Young's
HOUSE OF BEAUTY

703 E. First St.
Newberg, Oregon

New Construction

Remodeling

D & K Plumbing Inc.

410 E. First St.
Newberg • Ph. 538-2980

Dave Wareham • Kurt Wareham
Repair Service

NATIONAL ASSOCIATION OF INTERCOLLEGIATE ATHLETICS



The National Association of Intercollegiate Athletics (NAIA) is a completely autonomous association that administers programs leading to national championships in 15 events for more than 500 fully accredited four-year colleges and universities in all 50 states and Canada.

Established in 1940 as the National Association of Intercollegiate Basketball the NAIB evolved from the institution of a "National Small College Basketball Tournament" that was inaugurated in 1937. In 1952, the NAIB expanded to include tennis, outdoor track, and golf, and that year the organization was renamed the NAIA.

Since that time the NAIA has further enlarged to encompass football (two divisions were formed in 1970), cross-country, baseball, and swimming, which were added to the NAIA championship program in 1956, wrestling (1958), soccer (1959), gymnastics (1964), indoor track (1956), ice hockey (1968), and volleyball (1969). In August of 1980 the NAIA, after a two-year study, initiated

championships in 10 events for women in the newly organized NAIA Women's Division.

With its national headquarters and staff located in Kansas City, Missouri, the NAIA is organized into 31 districts. The District Executive Committee is the governing body in each district, with the district chairman serving as the chief officer. Within the district an eligibility chairman and publicity chairman are appointed to handle various duties.

A major factor in the success of the NAIA program is the importance placed on "grass roots" organizations, in which each district administers and organizes the programs of the schools within their own district. The districts are usually small enough in the number of schools involved that each individual institution has a major voice in the policy and decision-making process within that district. This procedure carries forward to the national level, where each of the 31 districts has an equal voice in national matters.

The NAIA clearly outlines its own responsibilities and those of its members: a sound athletic program, administered and controlled by those responsible for the administration of the college or university. The NAIA encourages a broad program of athletic pursuits in its member institutions and aims at uniformity and equity in policies and practices through its district and national championship events.

Eligibility rules in the NAIA govern all competition in sports recognized by the NAIA, not just post-season competition. These rules must be adhered to by all NAIA member institutions, including those members holding dual affiliations with other associations. NAIA member institutions must pay the annual membership dues and be in support of the policies of the Association.

Pizzas
Salads
Sandwiches
Call Us—
538-2022
2515 Portland Rd.



*The Finest
in
Children's Clothing*

*Your Favorite Brands
Infant through Size 14*

Springbrook Plaza

Newberg

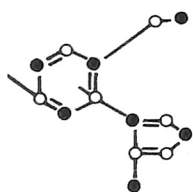
Electrify to Satisfy

FISHER ELECTRIC

*Residential • Commercial
Industrial • Contracting*

308-A E. First St.

Phone 538-5421



INJECTION MOLDING
THERMOSETS
THERMOPLASTICS

QUALITY PLASTICS CO., INC.

Phone (503) 538-8347 • 2101 Crestview Drive
Newberg, Oregon 97132

SHOP



For All Your Needs

1150 N. Springbrook Rd.,
Newberg

Store Phone 538-3164
Pharmacy 538-7402

**JR. BOUTIQUE
SHOPPE**



538-2623

516 E. 1st Street
Newberg, OR 97132



NEWBERG DATSUN

"Your Hometown Car Co."

814 E. Second • 538-9416



Call John
538-2562



10209 SE Division
Portland, OR 97266

BRUINS PARTICIPATE IN NAIA DISTRICT 2

George Fox College men's athletic teams compete in District 2 of the National Association of Intercollegiate Athletics (NAIA). Twenty teams currently make up the district, all but six within the state of Oregon. They include the four members of the Northwest Conference, four members of the former Evergreen Conference, and 12 independent schools, including George Fox.

The district tip-off and play-off guidelines are established by a basketball committee, composed of the 20 coaches. The play-off system this year involves an eight-team tournament including the colleges rated highest by the "Sempert System," which awards points based on wins and losses against teams with winning and losing records.

Members of NAIA District 2 are Brigham Young—Hawaii, Chaminade University, College of Idaho, Columbia Christian, Concordia College, Eastern Oregon State, George Fox, Hawaii Pacific College, Judson Baptist, Lewis and Clark, Linfield, Northwest Nazarene, Oregon Institute of Technology, Pacific, Southern Oregon, University of Hawaii—Hilo, Warner Pacific, Western Baptist, Western Oregon State College (formerly OCE) and Willamette.

George Fox College has been in the NAIA District 2 playoffs nine of the last eleven years, missing only three years ago and in the 1975-76 season, when the Bruins did not participate, even though they had the best record in the district (19-8), because of then-existing play-off regulations that have since been altered.

The Bruin district play-off record:

1970-71—Willamette University (lost 103-69)

1971-72—Willamette University (lost 69-60)

1972-73—Linfield College (won 95-88)

Pacific University (won 68-67) (District Title)

Defiance (Ohio) College (lost 82-62) (NAIA national championships)

1973-74—Pacific University (won 92-72)

Oregon Institute of Technology (lost 55-54)

1974-75—Oregon Institute of Technology (lost 72-56)

1976-77—University of Hawaii—Hilo (lost 85-79)

1977-78—Oregon Institute of Technology (lost 79-65)

1979-80—Oregon Institute of Technology (lost 69-67)

1980-81—Northwest Nazarene (lost 61-58)

THE SEMPERT SYSTEM: GETTING TO THE PLAYOFFS

The Sempert System, named for Coach Dean Sempert of Lewis and Clark College in Portland, is a system of points that are earned by each team in the district in the following manner:

Five (5) points for a win on the road against a better-than-.500 team.

Four (4) points for a win on the road against a less-than-.500 team.

Four (4) points for a win at home against a better-than-.500 team.

Three (3) points for a win at home against a less-than-.500 team.

One (1) point for a loss at home or on the road against a better-than-.500 team.

No (0) points for a loss at home or on the road against a less-than-.500 team.

(All neutral court games are counted as away games.)



203 Villa Road, Newberg
538-5715



Plymouth

CHRYSLER

Dodge Trucks

MEYER BROTHERS

2809 Portland Rd.
Newberg

Ph. 639-1821
538-9444



SANYO • HITACHI • FISHER

WILSON HOME FURNISHINGS

Furniture • T.V. • Stereo
Appliances • Records and Tapes

"Quality Does Not Have
To Be Expensive"

616 East 1st, Newberg Ph. 538-3495



Restaurant

111 W. First
Street

Al & Karen
Blodgett

THE BARCLAY PRESS

Serving the Quality Printing
and Publishing Needs of
George Fox College

600 E. Third St., Newberg
538-7345

R. F. STEVENS JEWELERS



Diamonds • Watches
Gifts For All Occasions

Newberg, Oregon Ph. 538-3226



PUBLISHERS
PAPER

NEWBERG DIVISION

Newberg Auto Parts Machine Shop



Your Jobber Is The
Right Place To Go

Owner ELVERN HALL

719 E. First

538-2106

**GEORGE
FOX**

VISITORS

No.	Name	Field Goals	Free Throws	Fouls	FG	FT	TP
10	Danny Madison	2 2 2 2 2 2 2 2 2 2 2 2 2 2 2	1 1 1 1 1 1 1 1 1 1 1 1 1 1 1	1 2 3 4 5			
12	Marc Mariani	2 2 2 2 2 2 2 2 2 2 2 2 2 2 2	1 1 1 1 1 1 1 1 1 1 1 1 1 1 1	1 2 3 4 5			
14	J.R. Smith	2 2 2 2 2 2 2 2 2 2 2 2 2 2 2	1 1 1 1 1 1 1 1 1 1 1 1 1 1 1	1 2 3 4 5			
20	Jeff Bieker	2 2 2 2 2 2 2 2 2 2 2 2 2 2 2	1 1 1 1 1 1 1 1 1 1 1 1 1 1 1	1 2 3 4 5			
22	Jon Oliver	2 2 2 2 2 2 2 2 2 2 2 2 2 2 2	1 1 1 1 1 1 1 1 1 1 1 1 1 1 1	1 2 3 4 5			
24	Mike Royer	2 2 2 2 2 2 2 2 2 2 2 2 2 2 2	1 1 1 1 1 1 1 1 1 1 1 1 1 1 1	1 2 3 4 5			
30	Tobi Wilson	2 2 2 2 2 2 2 2 2 2 2 2 2 2 2	1 1 1 1 1 1 1 1 1 1 1 1 1 1 1	1 2 3 4 5			
32	Rick Meyers	2 2 2 2 2 2 2 2 2 2 2 2 2 2 2	1 1 1 1 1 1 1 1 1 1 1 1 1 1 1	1 2 3 4 5			
34	Brian Barkdull	2 2 2 2 2 2 2 2 2 2 2 2 2 2 2	1 1 1 1 1 1 1 1 1 1 1 1 1 1 1	1 2 3 4 5			
40	Eric Smith	2 2 2 2 2 2 2 2 2 2 2 2 2 2 2	1 1 1 1 1 1 1 1 1 1 1 1 1 1 1	1 2 3 4 5			
42	Randy Dunn	2 2 2 2 2 2 2 2 2 2 2 2 2 2 2	1 1 1 1 1 1 1 1 1 1 1 1 1 1 1	1 2 3 4 5			
50	Kris Anderson	2 2 2 2 2 2 2 2 2 2 2 2 2 2 2	1 1 1 1 1 1 1 1 1 1 1 1 1 1 1	1 2 3 4 5			
52	Paul Almquist	2 2 2 2 2 2 2 2 2 2 2 2 2 2 2	1 1 1 1 1 1 1 1 1 1 1 1 1 1 1	1 2 3 4 5			
		2 2 2 2 2 2 2 2 2 2 2 2 2 2 2	1 1 1 1 1 1 1 1 1 1 1 1 1 1 1	1 2 3 4 5			
		2 2 2 2 2 2 2 2 2 2 2 2 2 2 2	1 1 1 1 1 1 1 1 1 1 1 1 1 1 1	1 2 3 4 5			
		2 2 2 2 2 2 2 2 2 2 2 2 2 2 2	1 1 1 1 1 1 1 1 1 1 1 1 1 1 1	1 2 3 4 5			
		2 2 2 2 2 2 2 2 2 2 2 2 2 2 2	1 1 1 1 1 1 1 1 1 1 1 1 1 1 1	1 2 3 4 5			
		2 2 2 2 2 2 2 2 2 2 2 2 2 2 2	1 1 1 1 1 1 1 1 1 1 1 1 1 1 1	1 2 3 4 5			
		2 2 2 2 2 2 2 2 2 2 2 2 2 2 2	1 1 1 1 1 1 1 1 1 1 1 1 1 1 1	1 2 3 4 5			
		2 2 2 2 2 2 2 2 2 2 2 2 2 2 2	1 1 1 1 1 1 1 1 1 1 1 1 1 1 1	1 2 3 4 5			
		2 2 2 2 2 2 2 2 2 2 2 2 2 2 2	1 1 1 1 1 1 1 1 1 1 1 1 1 1 1	1 2 3 4 5			
		2 2 2 2 2 2 2 2 2 2 2 2 2 2 2	1 1 1 1 1 1 1 1 1 1 1 1 1 1 1	1 2 3 4 5			
		2 2 2 2 2 2 2 2 2 2 2 2 2 2 2	1 1 1 1 1 1 1 1 1 1 1 1 1 1 1	1 2 3 4 5			
		2 2 2 2 2 2 2 2 2 2 2 2 2 2 2	1 1 1 1 1 1 1 1 1 1 1 1 1 1 1	1 2 3 4 5			
		2 2 2 2 2 2 2 2 2 2 2 2 2 2 2	1 1 1 1 1 1 1 1 1 1 1 1 1 1 1	1 2 3 4 5			.
		2 2 2 2 2 2 2 2 2 2 2 2 2 2 2	1 1 1 1 1 1 1 1 1 1 1 1 1 1 1	1 2 3 4 5			

Phones: 538-2148 or 628-2149; Res. 538-3324
105 NORTH MERIDIAN • NEWBERG, OREGON



KRAFT KREATIONS

classes - supplies - gifts silk flowers
Randi Krafting and Wedding flowers
a specialty

Glenna Jansen Darlene Gibbs
501 E. First Street Newberg, Oregon 97132

Newberg Sewing Center

Soon to carry tapestries, yarns,
embroidery floss, counted cross stitch
Instructions available

Ken Bodkin **Sigrid K. Timm**
310 First St. • Newberg • Ph. 538-1642



Willamette Industries

Building Center

Building or remodeling?
Bring in your list or call us collect.

True Value

- Lumber
- Plywood
- Roofing
- Hardware
- Windows
- Prehung Doors
- Cabinets
- Paneling
- Tools
- Insulation
- Paint

NEWBERG
Ph. 538-2119
112 S. Edward



PRICE-RITE COMPLETE SEPTIC TANK SERVICE

- Drain Field Specialists
- Septic Tank Installation
- Trenching
- Bob Cat
- Front Loader
- Stump Grinder
- Sewer Hook-ups



Serving Area for Over 17 Years

W.E. (Pete) Peters
538-2276 or 538-9161

Rt. 1 Box 128 J
Newberg



GFC STUDENTS AND FACULTY:

Simply present your student or faculty card *anytime* and receive a

**20% discount
off regular price.**

1531 Portland Rd. • 538-4596



WE ENCOURAGE YOU TO SUPPORT THE BRUIN SPONSORS
WHOSE ADVERTISING MAKES POSSIBLE THE GEORGE FOX COLLEGE SPORTS PUBLICITY PROGRAM.