

1992

1992 Media Guide

George Fox University Archives

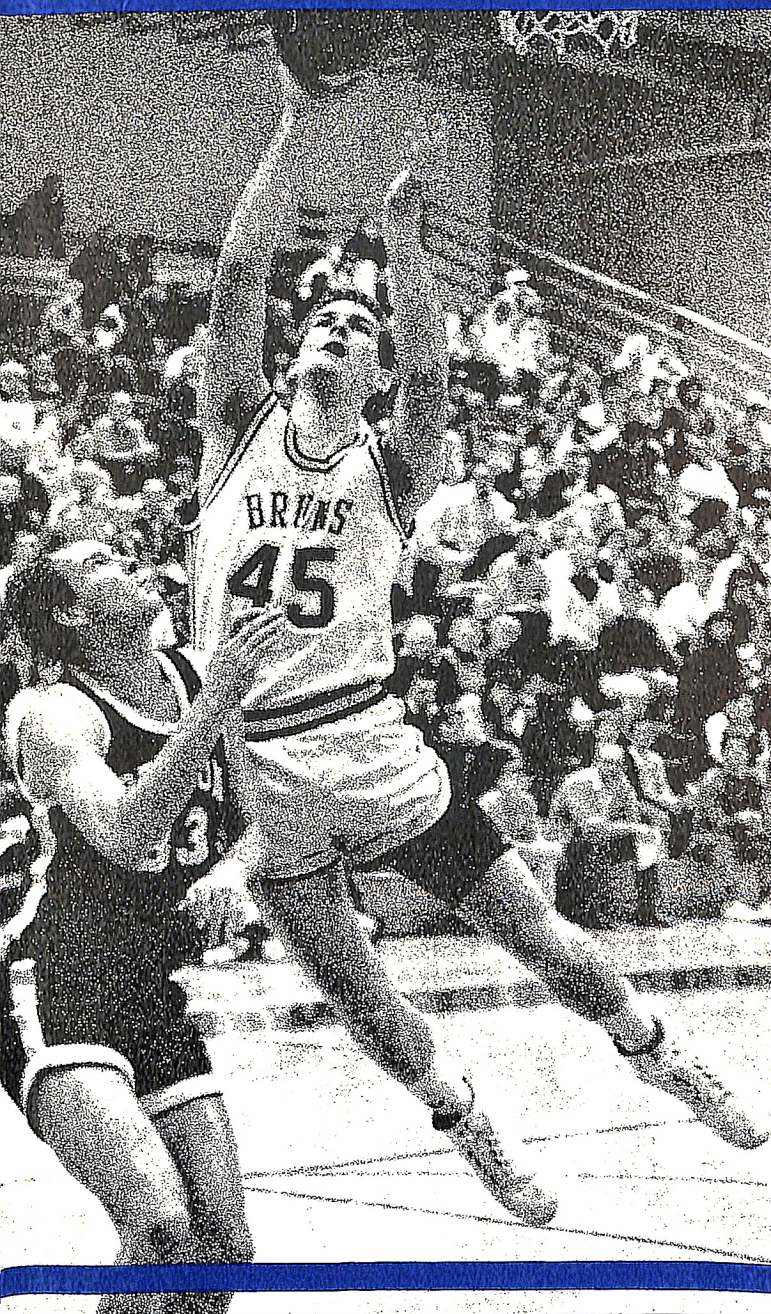
Follow this and additional works at: https://digitalcommons.georgefox.edu/athletics_menbasketball

Recommended Citation

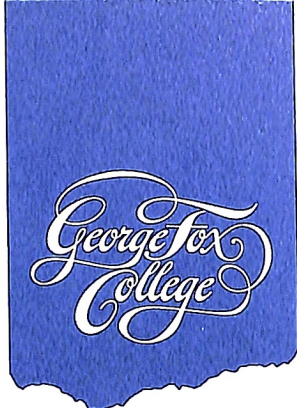
George Fox University Archives, "1992 Media Guide" (1992). *Men's Basketball*. 103.
https://digitalcommons.georgefox.edu/athletics_menbasketball/103

This Media Guide is brought to you for free and open access by the George Fox University Athletics at Digital Commons @ George Fox University. It has been accepted for inclusion in Men's Basketball by an authorized administrator of Digital Commons @ George Fox University. For more information, please contact arolfe@georgefox.edu.

George Fox College BRUINS



Basketball Media Guide '92-93



FINGERTIP FACTS

| | |
|---------------------------------------|---|
| College Location | Newberg, Oregon 97132 (13,000 pop.) |
| Founded | 1891 |
| Denomination Affiliation | Friends (Quaker) |
| Enrollment | 1,439 |
| Athletic Affiliation | NAIA Division II |
| Home Court | Miller Gymnasium, Wheeler Sports Center |
| Seating Capacity | 2,500 |
| Colors | Old Gold, Navy Blue |
| Nickname | Bruins |
| College President | Dr. Edward Stevens |
| Athletic Director | Craig Taylor |
| Basketball Coach | Mark Vernon |
| Sports Information Director | Rob Felton |

HOW TO REACH US

College Switchboard 503/538-8383 • FAX 537-3830

| | |
|---|-------------------------|
| Basketball Coach | |
| Mark Vernon | ext. 254, Home 538-1755 |
| Baseball Coach | |
| Pat Casey | ext. 255, Home 538-6081 |
| Athletic Director/Women's Basketball Coach | |
| Craig Taylor | ext. 250, Home 472-9694 |
| Softball Coach | |
| Chris Gross | ext. 391, Home 538-1248 |
| Men's Soccer Coach | |
| Manfred Tschan | ext. 255, Home 538-7131 |
| Women's Soccer Coach | |
| Byron Shenk | ext. 257, Home 538-2130 |
| Track/Cross Country Coach | |
| Wes Cook | ext. 252, Home 538-8078 |
| Women's Volleyball Coach/Assistant Men's Basketball Coach | |
| Steve Grant | ext. 253, Home 363-7758 |
| Sports Information Director | |
| Rob Felton | ext. 292, Home 538-3055 |
| Director of College and Sports Relations | |
| Barry Hubbell | ext. 224, Home 538-4332 |

A GUIDE TO THE GUIDE

GFC pages 2-5

George Fox College, an institution of faith and learning . . . GFC and basketball: together since just after their 1891 birthdays . . . Athletics are an integral part of GFC's educational program . . . Why the Bruins are the Bruins . . . Where the Bruins play.

NAIA pages 6-8

The Bruins compete in the National Association of Intercollegiate Athletics . . . George Fox plays in NAIA District 2, a group of 13 colleges in Oregon and Idaho . . . A chronological look back at George Fox's playoff record in the past 22 years.

1991-92 pages 9-11

Starting the year as the nation's second-ranked team, the Bruins finished in the national quarterfinals . . . George Fox established 29 individual and team records in a remarkable season . . . Final stats for the highest-finishing basketball team in College history.

OUTLOOK pages 12-13

George Fox has been a long-time regular in the District 2 playoffs. Will this year's completely new team continue the trend? . . . A listing of the Bruins by experience and class.

STAFF pages 14-18

Biographical information on coaches Mark Vernon and Steve Grant as well as the behind-the-scenes people . . . Profiles of GFC's athletic director, sports information director, statistician and trainer . . . Meet the Bruin hosts/hostesses and rally squad.

PLAYERS pages 19-25

From 5-10 to 6-8, from Short to Haij, all the 1992-93 Bruins are here . . . Background information on the familiar as well as fresh faces: Boutin, Corbus, Davidson, Downs, Fields, Gardea, Haij, Harrington, Hartenstein, Herold, Poet, Short, and Rasmussen.

ROSTER pages 26-27

A quick-reference centerfold roster and team picture of the 1992-93 George Fox College Bruins.

RECORDS pages 28-40

A potpourri of statistical highlights . . . Individual and team records . . . Miller Gym records . . . Bruin Top Ten . . . Triple-doubles . . . Year-by-year leaders . . . Value Point System . . . Honored Bruins . . . Most Valuable Players . . . Coaches' records.

SCORES pages 41-46

Every Bruin game played between 1965-66 and 1991-92 - all 802 of them - is listed in chronological order.

OPPONENTS pages 47-52

The Bruins will face 17 colleges and universities ranging in enrollment size from 230 to 10,000 . . . Included in this section are: series records, last year's results, top players, team outlook, and general college information.

GFC

NAIA

1991-92

OUTLOOK

STAFF

PLAYERS

ROSTER

RECORDS

SCORES

OPPONENTS



ABOUT GEORGE FOX COLLEGE

George Fox College, in its 102nd year, is one of America's Best Colleges. Four times it has been given that designation by *U.S. News & World Report* magazine. In 1992 GFC was ranked third in academic reputation among Western Regional Liberal Arts Colleges, including colleges and universities from Oklahoma to Hawaii.

This year, for the fourth time, the College was named to the Templeton Foundation Honor Roll of Character Building Colleges, the only Oregon college selected and one of 111 in the United States.

George Fox College is the outgrowth of a desire by early Willamette Valley Quaker settlers who established Pacific Academy in 1885 for the Christian education of their children. The college division was organized in 1891 to provide more advanced instruction for students. In 1949, because of the many colleges in the Northwest with Pacific in their name, the College was renamed George Fox in honor of the founder of the Friends (Quaker) Church. The College is governed by a 42-member Board of Trustees elected by Northwest Yearly Meeting of Friends Church, which comprises nearly 8,000 members in 51 churches in Oregon, Washington, and Idaho.

George Fox is one of the nation's fastest-growing colleges. Enrollment has risen from 549 in 1986 to 1,439 in the fall of 1992, a 162 percent increase, including an 18 percent growth from the previous year.

GFC students come from 25 states and 14 nations. Nearly 40 religious denominations are represented on campus.

George Fox is accredited by the Northwest Association of Secondary and Higher Schools. The College is one of 13 members of the national Christian College Consortium. The College's undergraduate program is administered through three schools: Humanities, Natural and Behavioral Sciences, and Professional Studies. The 15 departments offer 30 majors with more than 400 courses. An off-campus degree completion program in the management of human resources enrolls working adults in an evening program with classes in Portland, Salem, and Eugene. The graduate program offers a Doctor of Psychology (Psy.D.) degree in clinical psychology, a Master of Arts in Teaching (MAT), a Master of Business Administration (MBA), and a Master of Arts in Christian Studies (MA).

The 60-acre rural, tree-shaded campus a half-hour drive from Portland has undergone major expansion in recent years with 12 new buildings constructed. The latest academic building is the M. J. Murdock Learning Resource Center, dedicated in 1989. Two new residence halls – Willcuts and Beebe – were opened in 1990 and 1991, respectively. Currently a three-year project (using summers when students are not on campus) is underway to renovate and expand Heacock Commons. It is part of a \$16 million comprehensive Centennial Campaign through which \$10 million already has been raised.

Alumni of George Fox are primarily in service-oriented vocations of Christian ministries, education, social work, and medical fields. The College's most prominent alumnus is the late President Herbert Hoover, who attended Pacific Academy.

A LOOK AT THE PAST



The game of basketball was invented by Dr. James Naismith in 1891, and it took just seven years for it to be brought to George Fox College (then called Pacific College).

College board member and community leader T. W. Hester and others first saw the game played at the Portland YMCA. They were captivated by the new game and secured a ball, which they brought back to the College. The first exhibition game was played shortly thereafter, in the winter of 1898, and the first site was the third floor of the old Commercial Hotel on North Main Street because the College had no adequate space for the new sport.

The first gymnasium on the campus was the upper part of one wing of an old academy building (Hoover Hall), built in 1885 and torn down in the mid-1950s. A one-room wood gymnasium building was constructed in 1916 and served until 1946, when the College opened Hester Gymnasium, a concrete block structure built partly by student/faculty labor at a cost of \$40,000. The building, with a single hemlock playing floor and seating for 1,100, served through the 1976-77 season with opening of Wheeler Center.

College athletic affiliation in men's basketball over those years has gone from independent status to membership in the old Willamette Christian College Conference, the Metropolitan Conference, the Oregon Collegiate Conference, and back again to the present status as a major small college independent member of NAIA District 2 (joined in 1965). In 1973 George Fox was the district champion for the first time and has been in the district playoffs 18 of the last 22 years, including the last 9 in a row, winning the championship in 1990. The 1991-92 team produced GFC's highest national finish, advancing to the NAIA Division II quarterfinals with two national tournament wins.

"Our greatest basketball year," according to a College publication, "The First Fifty Years" (published in 1941), "was reached in 1917 when Pacific College won the [Willamette Valley] league championship and defeated Oregon State College 34-25." There have, of course, been many significant wins, seasons, and players throughout the last 95 years. Much of that history, however, has been lost because of the lack of available information and incomplete records prior to NAIA membership in 1965. Highlights and records since that time appear on the following pages. Pre-NAIA statistics available show these marks: Bill Hopper with a 42-point game and 1,737 career points in 1954-1958, and Cub Grimm in the 1952-53 season with a 21.0 points per game average, and 26 free throws in a contest with the Oregon Medical School in 1953.

GFC ATHLETICS

Intercollegiate athletics is an integral part of the overall education program at George Fox. Men's varsity athletic teams represent the College in baseball, basketball, track, cross country, and soccer. Women students compete in volleyball, basketball, track, softball, cross country, and soccer.

George Fox is a member of the National Association of Intercollegiate Athletics (NAIA), District 2, Division II.

For students not participating in the varsity program, GFC has a complete intramural program including flag football, basketball, volleyball, softball, racquetball, indoor soccer, skiing, swimming, bowling, floor hockey, and tennis.

Athletic facilities include the Coleman H. Wheeler Center for Sports and Physical Education; Colcord Field, which includes an all-weather rubberized track, tennis courts; and the Curtis and Margaret Morse Athletic Field containing baseball diamond, softball field, and soccer field. The complex was opened in 1989.

Wheeler Center, completed in 1977 in a \$2.7 million project, includes the James and Lila Miller Gymnasium with three basketball courts and seating for up to 2,500; multipurpose, class, and weight room; faculty and administrative offices; handball courts; dressing and therapy rooms.

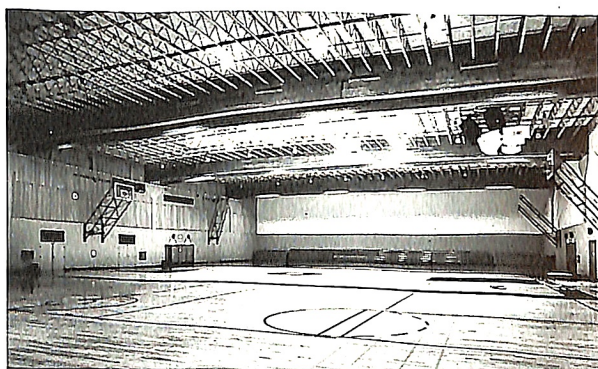
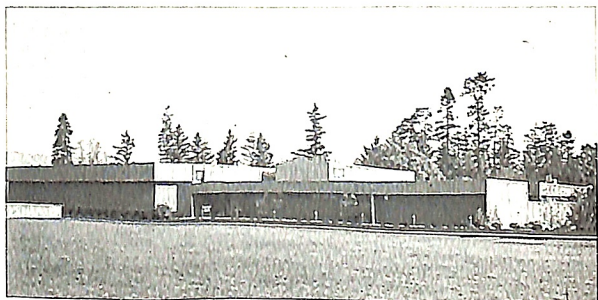
THE BRUIN NICKNAME

George Fox College is represented by the nickname and mascot "Bruin." But it has not always been so, even though it should have been.

The nickname comes from a real bear captured in 1887 just two years after Pacific Academy (the College's predecessor) was established. The small cub was captured in the coast range foothills west of Carlton when its mother was shot. The young cub was brought to campus by a student and later lived with a faculty member. When it grew to adulthood it was kept in a pit in what is now known as Hess Creek Canyon south of the campus. It escaped one too many times and was turned into steak for the dining table and the hide preserved on a frame and displayed in an early campus museum. When it deteriorated several years later, it was taken to a campus furnace room to be destroyed, but the framework proved a problem in dismantling, so it was left sitting in a corner. Students found the old Bruin skin later and began skirmishes over ownership, a tradition that continues 105 years later. "Bruin Junior," a replica, under a set of guidelines passed down for years, is fought over periodically in class competition, with the class able to physically drag the Bruin replica off campus declared the rightful owner until next "flashed."

Even with the Bruin tradition, somewhere along the line, the "Quaker" tag to athletic teams came into popularity with sports writers because of the College's church affiliation, and that nickname was used, along with a mascot "Foxy George," a little fox with a Quaker hat. Both gained acceptance for a period in the 1950s and 1960s until a vote of faculty, students, and administration in 1970 reinstated the Bruin nickname to its rightful place.

THIS IS WHERE THE GAME IS PLAYED



George Fox College is in its sixteenth year in the Coleman H. Wheeler Center for Sports and Physical Education. Completed in June 1977, the \$2.7 million, 55,000-square-foot complex is the College's largest building. It contains the James and Lila Miller Gymnasium, the Bruin home court.

The sports center was designed by noted architect Pietro Beluschi, with a wooded canyon setting chosen as the center's location. The building features wood products and a large window area overlooking the adjacent natural terrain.

Three times larger than Hester Gymnasium, which it replaced, the Wheeler Center features a 116 x 174-foot gymnasium with three basketball courts and seating for 2,500 spectators. The gymnasium ceilings are 32 feet over the hardwood maple floor. The gym provides three volleyball courts and ten badminton courts.

The building is entered on two levels – ground level on the east side through the nine doors for the general public and after crossing a 200-foot bridge; and on the second floor on the west side for campus personnel. There is a two-floor lobby featuring oak parquet floors.

Contained on the upper level are athletic administration and faculty offices, staff room, classroom, weight room, and multipurpose room.

The lower level contains a concession area and ticket sales area, dressing rooms, team rooms, laundry, equipment-issuing room, and storage space. An east wing of the building houses two handball courts.

The building is named for long-time Oregon lumberman Coleman H. Wheeler, former chairman of the board of Willamette Industries. The gymnasium is named for former board member James Miller and his wife, Lila. He is the former president of Cascadia Lumber Co. The building was dedicated October 17, 1977.

BRUINS COMPETE IN NAIA



The National Association of Intercollegiate Athletics (NAIA) is a completely autonomous association administering programs leading to 23 national championships in 13 events. The NAIA includes 40 percent of America's collegiate athletic programs, representing 411 accredited four-year colleges and universities in 32 geographical districts spread over 49 states and Canada. The colleges have a total enrollment of more than 800,000, including approximately 65,000 varsity athletes.

Established in 1940 as the National Association of Intercollegiate Basketball the NAIB evolved from the institution of a "National Small College Basketball Tournament" that was inaugurated in 1937. In 1952, the NAIB expanded to include tennis, outdoor track, and golf, and that year the organization was renamed the NAIA.

Since that time the NAIA has further enlarged to encompass football, cross country, baseball, and swimming, which were added to the NAIA championship program in 1956, wrestling (1958), soccer (1959), and indoor track (1966). In 1980 the NAIA initiated championships for women in the newly organized NAIA Women's Division. Nine championships are offered: basketball, cross country, fast-pitch softball, indoor and outdoor track, soccer, swimming and diving, tennis, and volleyball.

NAIA national headquarters and staff are located in Kansas City, Missouri, but will move in July to Tulsa, Oklahoma. The NAIA is governed by two bodies. The Council of Presidents, composed of one president from each district, is responsible for fiscal matters and supervision of the national staff. George Fox College president Edward F. Stevens represents NAIA District 2 and is one of five U.S. college presidents selected to serve on the NAIA Council of Presidents Executive Committee, serving as chairman in 1992. The national Coordinating Council, elected by the membership, is responsible for organizing championship events, academic standards, and overseeing the committees and associations.

Eligibility rules within the NAIA govern all play in all sports recognized by the Association, not just post-season play. All eligibility guidelines must be adhered to by all members, including those holding dual affiliation with other associations.

The NAIA clearly outlines its own responsibilities and those of its members: a sound athletic program, administered and controlled by those responsible for the administration of the college or university. The NAIA's basic premise is that the athletic program is a basic component of the overall general educational process, and not an entity apart.

NAIA academic eligibility requirements mandate that all student athletes exhibit demonstrated progress toward an academic degree throughout their collegiate careers for the duration of their athletic eligibility. Where institutional rules and standards are more strict than those of the regulatory group or the NAIA, those rules and standards of the institution are recognized and supported by the NAIA.

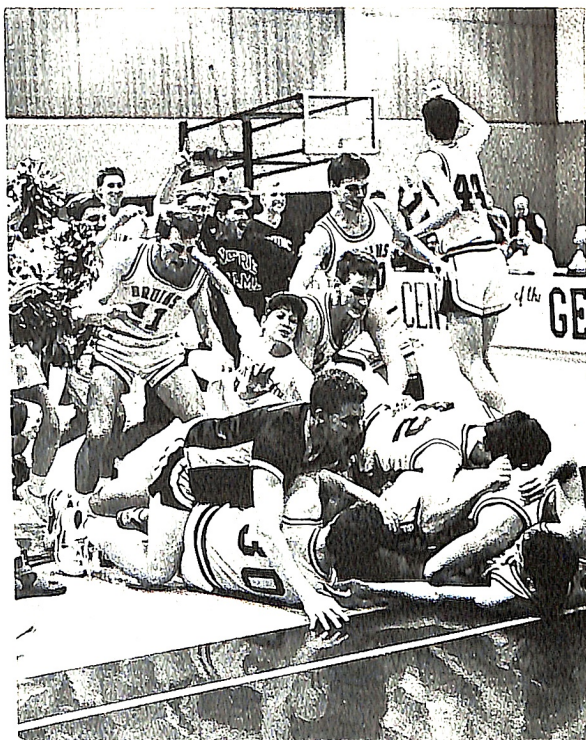
NAIA DISTRICT 2

George Fox College competes in District 2 of the National Association of Intercollegiate Athletics (NAIA), Division II. Thirteen teams make up the district, all but two within Oregon.

The district has two scheduling pools. George Fox plays in the independent "Cascade" division along with Albertson College, Concordia College, Eastern Oregon State College, Northwest Nazarene College, Oregon Institute of Technology, Southern Oregon State College, Western Baptist College, and Western Oregon State College. Members of the Northwest Conference of Independent Colleges (NCIC) are Lewis & Clark College, Linfield College, Pacific University, and Willamette University. Three institutions in Washington – Pacific Lutheran University, Whitman College, and Whitworth College – are members of the conference, but members of NAIA District 1. They are assigned by the NAIA national office to District 2 for national playoff competition.

An eight-team district tournament will be held February 25, 27, and March 3 at the site of the highest seeded teams. The top four independent teams and the top three NCIC teams receive automatic berths in the district playoffs. The eighth team is selected between the fourth-place NCIC team and the fifth-place independent team. Selection is based on the "Sempert" tie-breaking system.

The top independent team and the top NCIC teams will be seeded No. 1 and No. 2 by established criteria that includes head-to-head competition, record against common opponents, then "Sempert" system points against district opponents, Division II schools, and finally all NAIA competition. George Fox has been in the NAIA District 2 playoffs 18 of the last 22 years.

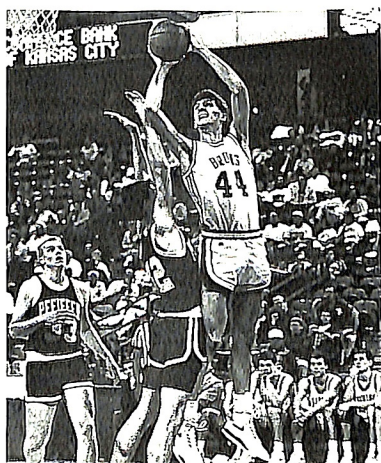


1992 district quarterfinal celebration

THE BRUIN PLAYOFF RECORD

- 1970-71 Willamette University (lost 103-69)
- 1971-72 Willamette University (lost 69-60)
- 1972-73 Linfield College (won 95-88)
- Pacific University (won 68-67) (District title)
- Defiance (Ohio) College (lost 86-62) (NAIA national championships)
- 1973-74 Pacific University (won 92-72)
- Oregon Institute of Technology (lost 55-54)
- 1974-75 Oregon Institute of Technology (lost 72-56)
- 1976-77 University of Hawaii - Hilo (lost 85-79)
- 1977-78 Oregon Institute of Technology (lost 79-65)
- 1979-80 Oregon Institute of Technology (lost 69-67)
- 1980-81 Northwest Nazarene (lost 61-58)
- 1983-84 Western Oregon State (lost 86-72)
- 1984-85 Western Baptist (won 50-47)
- Western Oregon State (won 71-57)
- College of Idaho (lost 61-53)
- 1985-86 Warner Pacific (won 66-56)
- Oregon Institute of Technology (lost 76-67)
- 1986-87 Warner Pacific (won 101-75)
- College of Idaho (won 75-58)
- Oregon Institute of Technology (lost 75-69)
- 1987-88 Eastern Oregon (won 101-82)
- Southern Oregon (won 90-76)
- Oregon Institute of Technology (lost 84-61)
- 1988-89 Eastern Oregon (won 94-82)
- Oregon Institute of Technology (lost 106-70)
- 1989-90 Eastern Oregon (won 98-92)
- Western Baptist (won 76-66)
- Willamette (won 98-95) (District title)
- Pfeiffer (N.C.) (lost 97-73) (NAIA national championships)
- 1990-91 Linfield (won 80-75)
- Willamette (won 100-98)
- College of Idaho (lost 95-78)
- 1991-92 Western Oregon (won 82-81)
- Willamette (lost 107-87)
- (at-large berth NAIA Division II national championships)
- Missouri Valley (won 90-70)
- Eureka (won 85-77)
- Northwestern (lost 85-82)

*All-American
Dave Wilson at
1990 national
tournament*



1991-92 HIGHLIGHTS

From the preseason pinnacle of ranking second in the nation, the 1991-92 George Fox College men's basketball season careened around some unexpected turns before arriving at the NAIA Division II quarterfinals.

A regular season sprinkled with surprise upsets sent the Bruins to the district playoffs assured of just one home game.

By the narrowest of margins, 82-81, GFC advanced past Western Oregon to the district semifinals, where it was buried 107-87 under an avalanche of Willamette three-pointers.

Then, attending the national tournament by a back door, at-large invitation, the 13th-seeded Bruins reached higher than any prior GFC team.

The All-American one-two punch of 7-0 center Dave Wilson and 6-4 forward Jeff Hoffman knocked out George Fox's first two national tourney opponents before the Bruins fell by three points to a team that came within six of the national title.

In their streaky 90-70 first-round victory over Missouri Valley, the Bruins earned their first-ever taste of a national playoff win.

Eureka College came into the tourney fourth-seeded after spending three weeks as the nation's No. 1 team. Its glitzy 25-3 record didn't mean a thing as George Fox led by as many as 16 before holding off a last-minute long-distance barrage to win 85-77.

Two games from the finals, the Bruins' season ended when Northwestern of Iowa downed GFC, 85-82. George Fox trimmed a 17-point halftime deficit to one with 1:46 remaining, but came up short, missing a trio of three-pointers in the final 15 seconds. GFC's 24-11 record made it the winningest small college in the Northwest the last three seasons: 77-22.

TEAM HIGHLIGHTS

- Thanks in part to the playoff-extended season, the Bruins set 29 individual and team records. By going three rounds into the NAIA national playoffs, GFC played 35 games – the most ever in a season.
- Team season record highlights include:
 - Most points: 3,207
 - Most three-point goals: 185
 - Most free throws made: 708
 - Best rebound margin: 10.2
 - Most rebounds: 1,651
- The Bruins set two single-game records:
 - Most blocked shots: 22 in game at Northwest Christian Nov. 19
 - Most three-point attempts: 31 vs. Willamette Feb. 29
- GFC's record on the road was the best in NAIA District 2 13-7 (5-1 neutral courts). The Bruins were 11-4 at home.

INDIVIDUAL HIGHLIGHTS

Center Dave Wilson The two-time District 2 Player of the Year and NAIA first team All-American racked up 17 GFC marks: 8 for a career, 8 for a season, and 1 for a game.

- Career record highlights include:
 - Most points: 2,296. Fourth highest ever in District 2
 - Best field goal average: .621. Second highest ever in District 2
 - Most free throws: 534. Fifth highest ever in District 2
 - Most blocked shots: 598. Highest ever in District 2
 - Most games played: 131
- Season record highlights include:
 - Most points: 799 in 1991-92. Tenth highest ever in District 2

Most field goals made: 299 in 1991-92.

Seventh highest ever in District 2

Best field goal percent: .642 in 1987-88

Most free throws: 201 in 1991-92

Most blocked shots: 170 in 1987-88.

Highest ever in District 2

- Single game record:

Most blocked shots: 13 vs. NW Christian, Nov. 19, 1992.

Highest ever in District 2

Forward Jeff Hoffman The two-time NAIA All-American honorable mention and District 2 first-team selection left some marks of his own in his two years at GFC.

- Career record highlights include:

Best rebound average: 11.69

- Season record highlights include:

Best rebound average: 12.90 in 1990-91

Third highest scoring: 690 in 1990-91

- Single game records include:

Most points in a game: 50 vs. Columbia Christian, Feb. 14, 1991

Most field goals in a game: 19 vs. Columbia Christian, Feb. 14, 1991

Most three-point goals in a game: 6 vs. Columbia Christian, Feb. 14, 1991

Best three-point percentage: 1.000 (6-6) vs. Columbia Christian, Feb. 14, 1991

STATISTICAL HIGHLIGHTS

Longest Win String – 9

Longest Loss String – 3

Most Points Scored – 135 vs. Northwest Christian (78) in Eugene, November 19

Fewest Points Scored – 68 vs. Pacific (76) in Newberg, December 20

Most Points Allowed – 107 vs. Willamette (GFC, 87) in Salem, February 29

Fewest Points Allowed – 57 vs. Eastern Oregon (GFC, 89) in Newberg, February 22

Largest Margin of Victory – 57 (135-78) vs. Northwest Christian in Eugene, November 19

Largest Margin of Defeat – 20 (107-87) vs. Willamette in Salem, February 29

GFC's
1992 All-
American
duo Jeff
Hoffman
(34)
and Dave
Wilson
(44)



1991-92 ACCUMULATIVE STATISTICS

| Player | Games | FIELD GOALS | | | 3-PT. FIELD GOALS | | | FREE THROWS | | | REBOUNDS | | | | POINTS | | | TO | STL | BLK | AST | AST AVG |
|-----------------|-------|-------------|------|------|-------------------|-----|------|-------------|-----|------|----------|------|------|------|--------|------|------|-----|-----|-----|-----|------------|
| | | SM | SA | PCT | SM | SA | PCT | SM | SA | PCT | O | D | T | AVG | PF | TP | AVG | | | | | |
| Corbus, Dan | 7 | 3 | 10 | .300 | 0 | 2 | .000 | 8 | 10 | .800 | 3 | 2 | 5 | 0.7 | 8 | 14 | 2.0 | 4 | 1 | 0 | 9 | 1.3 |
| Gard, Steve | 8 | 3 | 4 | .750 | 1 | 2 | .500 | 7 | 11 | .636 | 1 | 1 | 2 | 0.3 | 5 | 14 | 1.8 | 6 | 2 | 0 | 8 | 1.0 |
| Hagen, Jon | 35 | 86 | 162 | .531 | 8 | 30 | .267 | 57 | 74 | .770 | 37 | 61 | 98 | 2.8 | 44 | 237 | 6.8 | 32 | 37 | 6 | 89 | 2.5 |
| Harris, Tim | 28 | 25 | 57 | .439 | 3 | 14 | .214 | 18 | 28 | .643 | 15 | 20 | 35 | 1.3 | 33 | 71 | 2.5 | 11 | 14 | 4 | 19 | 0.7 |
| Herold, Mark | 29 | 33 | 56 | .589 | 1 | 2 | .500 | 27 | 43 | .628 | 31 | 51 | 82 | 2.8 | 21 | 94 | 3.3 | 7 | 5 | 7 | 13 | 0.4 |
| Hoffman, Jeff | 35 | 194 | 421 | .461 | 30 | 100 | .300 | 156 | 219 | .712 | 115 | 259 | 374 | 10.7 | 98 | 574 | 16.4 | 112 | 34 | 23 | 119 | 3.4 |
| Linman, Nate | 16 | 17 | 37 | .459 | 0 | 3 | .000 | 9 | 19 | .474 | 6 | 29 | 35 | 2.2 | 11 | 43 | 2.7 | 8 | 8 | 4 | 7 | 0.4 |
| Milligan, Matt | 20 | 14 | 30 | .467 | 5 | 11 | .455 | 7 | 13 | .538 | 8 | 13 | 21 | 1.1 | 9 | 40 | 2.0 | 9 | 2 | 1 | 9 | 0.5 |
| Pierce, Michael | 35 | 103 | 238 | .433 | 59 | 147 | .401 | 25 | 30 | .833 | 21 | 45 | 66 | 1.9 | 29 | 290 | 8.3 | 41 | 20 | 0 | 72 | 2.1 |
| Rasmussen, Mike | 35 | 140 | 254 | .551 | 0 | 1 | .000 | 46 | 60 | .767 | 48 | 116 | 164 | 4.7 | 85 | 326 | 9.3 | 43 | 15 | 23 | 37 | 1.1 |
| Ronnow, Kurt | 35 | 98 | 228 | .430 | 44 | 121 | .364 | 34 | 43 | .791 | 29 | 67 | 96 | 2.7 | 68 | 274 | 7.8 | 39 | 18 | 11 | 35 | 1.0 |
| Scheidel, Curt | 35 | 104 | 204 | .510 | 22 | 67 | .328 | 81 | 104 | .779 | 23 | 78 | 101 | 2.9 | 89 | 311 | 8.9 | 114 | 51 | 6 | 231 | 6.6 |
| Spencer, Todd | 33 | 38 | 97 | .392 | 12 | 43 | .279 | 32 | 53 | .604 | 23 | 59 | 82 | 2.5 | 73 | 120 | 3.6 | 47 | 24 | 4 | 121 | 3.7 |
| Wilson, Dave | 35 | 299 | 475 | .629 | 0 | 0 | .000 | 201 | 249 | .807 | 109 | 225 | 334 | 9.5 | 79 | 799 | 22.8 | 64 | 28 | 137 | 51 | 1.5 |
| TEAM REBOUNDS | | | | | | | | | | | 128 | 29 | 157 | 4.5 | | | | | | | | |
| GEORGE FOX | 35 | 1157 | 2273 | .510 | 185 | 543 | .341 | 708 | 956 | .741 | 597 | 1055 | 1652 | 47.2 | 652 | 3207 | 91.6 | 537 | 259 | 226 | 820 | 23.5 |
| II OPPONENTS | 35 | 1024 | 2412 | .425 | 286 | 775 | .369 | 499 | 690 | .723 | 524 | 771 | 1295 | 37.0 | 773 | 2833 | 80.9 | 497 | 250 | 64 | 647 | 18.5 |

1992-93 THE OUTLOOK

George Fox College, at 77-22, has been the Northwest's winningest small college basketball team the last three seasons.

It's come from experienced players molded by Bruin coach Mark Vernon into teams that twice in that span have contended in the NAIA national playoffs.

It's not been exactly ho-hum, but it's almost become expected for the Newberg college to be in the NAIA District 2 playoffs. After all, they've been there nine consecutive years.

But this year may be different from the routine.

Vernon says he'll be happy just making it to the playoffs, let alone hoping to compete nationally.

If that sounds like a "rebuilding year," Vernon says even that may be optimistic. "We're not rebuilding - we're starting over."

He calls it a "wait-and-see kind of year" with his players needing time to bind themselves together as a team. In fact, Vernon may be waiting for an official program to introduce the players to themselves, let alone their fans.

Of this year's 13-member squad, only three played a year ago. "We're probably the youngest team in District 2," says Vernon. Five of the top 10 players will be freshmen. Vernon may have two starters with no college experience.

"Our weakness is inexperience and all of our new players trying to figure out who is who early in the season," Vernon says.

"I hope we can be a team to be contended with by season's end," is Vernon's early line. "Will we be tough enough to compete with the good teams?" It's his own question for which he's still awaiting an answer.

The eleventh-year Bruin boss does expect some similarity to previous teams: an up-tempo squad. "We'll be looking to press and run as much as possible, and we will be looking to put down more threes than in the past."

If the Bruins do make it to the district playoffs Vernon expects to find Willamette, Western Oregon, Northwest Nazarene, Albertson College of Idaho, and Lewis & Clark there. "The district is up for grabs for six or seven teams; it may be the most balanced year in recent district history," Vernon says.

Despite the overwhelming youth, the Bruins do have some experience, led by two senior post players with some height: Mike Rasmussen at 6-7 and Mark Herold at 6-8. Last season, Rasmussen was the Bruins' third-highest scorer and rebounder with 9.3 points and 4.7 rebounds. Herold contributed 3.3 points and 2.8 rebounds.

They come out of the All-American shadows of 7-0 center Dave Wilson and 6-4 forward Jeff Hoffman. Wilson, a two-time district Player of the Year, completed his impressive career on the NAIA Division II All-American first team. He rewrote 17 GFC career, season, or game records. Now playing professional basketball in Germany, Wilson blocked 598 shots in his four years, believed second in NAIA history. He led the Bruins in scoring with 22.8 a game and collected 9.5 rebounds. Hoffman finished atop the district in rebounds for his second-straight year with 10.7 and added 16.4 points a game.

With the departure of his stars, Vernon has brought in 6-7 post/wing Jamie Boutin, a potential All-American, according to his coach. The 1991 Northwest Community College MVP, Boutin led Lane Community to the Northwest Athletic Association of Community Colleges championship. Vernon calls Boutin, who averaged 22.9 points and 6.3 rebounds a game, "the best scorer I've ever recruited."

The only other returner on the Bruin roster is sophomore point Dan Corbus. He saw action in seven contests a year ago,

dishing out five assists when he started against Southern Oregon on January 4.

Besides Corbus, it is indeed a changing of the guards. Gone are the 6.6 assist and 8.9 point per game averages of senior Curt Scheidel. No other guards return.

To fill the void, Vernon recruited two players from Lower Columbia Community's backcourt. Junior transfers Rick Gardea, a 6-1 point/wing, and 5-11 wing Jay Short rejoin Herold, another LCC alum. "They will give us immediate experience at guard and I look for both to have good years at GFC," says Vernon.

Gardea averaged 14.2 points a game last year and was named to the NWAACC all-tournament team. Short, eligible after the semester break, averaged 12.8 points last season and was named to the NWAACC western division all-star second team.

First-year players Nick Haij, Grant Hartenstein, and Mike Davidson give the Bruins promising but untested talent. Haij, a 6-1 wing, joins George Fox a year after setting a Washington 3A tournament record with 14 three-point baskets in four games. He averaged 18 points, 7.2 rebounds, and 4.1 assists while captaining his Columbia River High team.

Hartenstein, a 5-10 point, won every award available to him while playing for Colton High. He was the 1991 Oregon AA Player of the Year and captained his team to the state title. KATU's Athlete of the Month for February, 1991, Hartenstein attended GFC last year but did not play.

Joining Rasmussen as one of three West Linn High grads on the team, Davidson brings 1991 4A all-state honorable mention credentials. Davidson averaged 15.7 points and 4.8 rebounds his senior year after transferring from Santiam High where he scored 31.2 points and collected 7.1 rebounds en route to winning first team 2A all-state honors.

Besides Hartenstein and Davidson, three other redshirt freshmen join the Bruins. Dustin Harrington, a 6-4 wing, averaged 22 points and 10 rebounds at Santiam Christian in 1991. He helped his team to a third-place finish in the 2A state tournament, earning first team all-state and all-tournament honors. Also becoming varsity Bruins are 6-6 post Lorin Fields, Beaver-ton, and 6-2 wing Dan Poet, Springfield, Ore.

The only other true freshman to make the team besides Haij is 6-2 point Aaron Downs, the third player from West Linn.

EXPERIENCE CHART

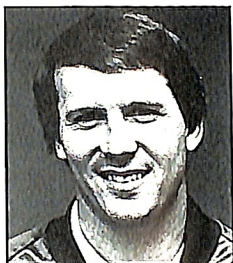
Lettermen Returning: Dan Corbus, Mark Herold, Mike Rasmussen

Newcomers: Jamie Boutin, Mike Davidson, Aaron Downs, Lorin Fields, Rick Gardea, Nick Haij, Dustin Harrington, Grant Hartenstein, Dan Poet, Jay Short

By Class: *Senior*—Mark Herold, Mike Rasmussen; *Junior*—Jamie Boutin, Rick Gardea, Jay Short; *Sophomore*—Dan Corbus; *Freshman*—Mike Davidson, Aaron Downs, Lorin Fields, Nick Haij, Dustin Harrington, Grant Hartenstein, Dan Poet

COACH MARK VERNON

Mark S. Vernon is George Fox College's winningest coach ever with a 220-101 record, a winning rate of .685. He has averaged 22 wins a year in his ten years. And, Vernon is the only GFC coach to have ever posted a winning record on the road, where he is 100-74. In the last three years, Vernon has coached the Bruins to a District 2-leading record of 77-22, a 78 percent winning rate.



His efforts have not gone unnoticed. In 1985, 1987, and again in 1991 he was named NAIA District 2 Basketball Coach of the Year. He was the youngest coach in the district the first time and the Bruins had just gone 27-7, the best record in GFC's history to that time, and a record that made it Oregon's winningest college in basketball – at any level – in Oregon. In 1987 he was named National Christian College Athletic Association National Coach of the Year.

In his first season the Bruins were 15-16, in tenth place in NAIA District 2, up from 16th the year before. The next year the Bruins were 17-12 and in the fifth slot. In 1984-85 the Bruins produced their 27-7 mark and were second. Seven years ago GFC went 21-10, third in the district, six years ago it was a 27-6 record, second in the district. Five years ago GFC, at 17-16, was third. Four years ago at 19-12, the Bruins were fifth. Three years ago the Bruins were district champions at 29-5, the best record for any Oregon college team. Two years ago GFC, at 24-6, was second. Last year the Bruins finished 24-11, third in district, but advanced to the national tournament quarterfinals. It was the ninth consecutive year for Vernon in the district playoffs and eighth-straight in the championship or semifinal games.

Vernon, 39, has his entire collegiate coaching career at George Fox, but the tie with the Bruins is longer. He came to the College in 1975 as a student and basketball player. Upon completion of his eligibility he remained with GFC as an assistant for three years (1977-78, 79-80, and 81-82).

He was named head coach in 1982 after a nationwide search that began with 70 names.

Vernon was assistant for the Bruins while working on a master's degree in physical education at Linfield College, with work completed in 1982. Vernon teaches physical education classes in addition to his coaching.

A 1977 George Fox graduate, Vernon, as a senior, was named the College's Outstanding Physical Education Major. The same year he was named George Fox's Outstanding Young Person in Teacher Education.

In the fall of 1981 Vernon joined the GFC physical education faculty as women's volleyball coach, women's tennis coach, and basketball assistant, along with teaching assignments.

As a basketball Bruin, Vernon was a guard, establishing the Bruins' all-time career high average in assists (3.9) at that time. He was named the team's Most Inspirational Player by his teammates as a senior, a year the Bruins were 20-9. During Vernon's two years in a Bruin uniform his teams were 39-17. Vernon compiled statistics that place him fifth in the Value Point System.

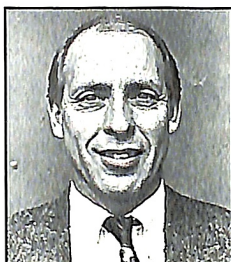
Vernon also played one year at Highline Community College, Seattle, receiving both Best Defense and Hustle awards. He also played ball at West Seattle High School, where he was named Outstanding Athlete of the Year as a senior.

Vernon and his wife, Denise, were married in August 1981. She is a dental assistant for Newberg dentist Lance Rosenau. They have a son, Brett, born June 19, 1991.

ASST. COACH STEVE GRANT

Steve Grant is in his eleventh year with the Bruins, being named in 1982 to the George Fox physical education teaching faculty and to serve as men's basketball assistant and head women's volleyball coach.

Grant, 46, replaced Mark Vernon as volleyball coach when Vernon stepped up to the head basketball position. The Bruin assistant is a 1969 graduate of Biola, where as a guard for the Eagles he was named Most Valuable both his junior and senior years. He then was named assistant basketball coach for two years, also assisting in soccer.

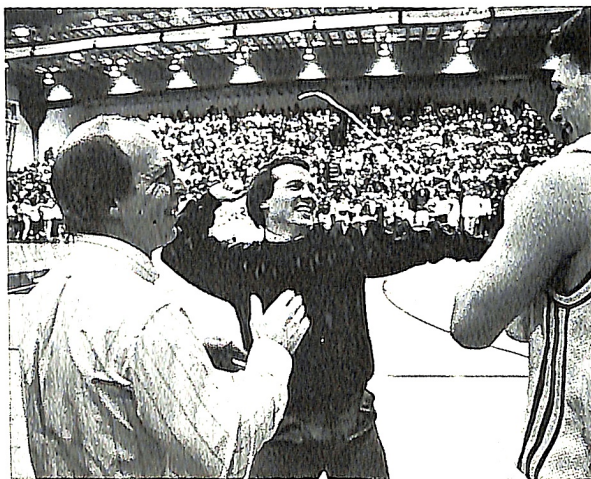


At Western Baptist College in 1981-82, Grant coached the women's basketball team and was head men's soccer coach, guiding the Warriors to an 8-4-3 mark. Grant previously was at Salem Academy for ten years where for nine years, until 1980, he guided the basketball Crusaders. He coached varsity baseball for five seasons, then varsity women's volleyball for five years, leading Salem Academy to the playoffs each of those years.

In his first season with the volleyball Bruins, Grant guided his squad to a 15-6 record and regional playoffs. In his second year it was 11-18. In 1984 it was 30-10 as George Fox won the National Christian College Athletic Association national championship in Chicago. Grant was named NCCAA national Coach of the Year as well as NAIA District 2 1984 Coach of the Year as his Lady Bruins finished third in district play. In 1985 the Lady Bruins were 16-18, then it was 15-16, and in 1987 the Lady Bruins, with a 33-22 record, again won the NCCAA national title. Grant was again named NCCAA Coach of the Year. In 1988 GFC finished 30-13 and was third in NAIA District 2, the Lady Bruins' highest district finish ever. In 1989 GFC, with a 26-18 record, finished fourth in district and second in the NCCAA national championships. Two years ago, GFC took third in district after posting a 29-11 record. Last year his Lady Bruins went 24-17, ending fourth in district. This fall, GFC finished 28-20, taking third in the District 2 playoffs.

Grant earned a master's degree from Linfield College in 1985.

Grant and his wife, Kathleen, live in Salem. They have two children, Jeff, 20, and Bryan, 16.



BRUIN STAFF

CRAIG TAYLOR is in his fifth year as George Fox College Athletic Director, but he has been associated with the Bruins for 19 years as player, coach, and professor.

The AD has been coach of GFC's women's basketball teams since 1981 when he rejoined the coaching and PE staff after two years with a sporting goods retailing firm. From 1976 through 1979 Taylor was the Bruin baseball coach while also serving as assistant basketball coach.

Taylor, associate professor of physical education, coached Lady Bruin softball from 1981 to 1988, and again in 1990.

Taylor, 41, came to George Fox in 1971 as a junior forward for the men's basketball team. In 1972-73 he helped the Bruins to the NAIA District 2 basketball title, the first GFC team to represent the district in the NAIA national basketball tournament in Kansas City.

Taylor graduated from George Fox in 1974, named both Outstanding Man in Teacher Education and Outstanding PE Major. He received a master of science degree in education from Linfield College in 1975. While enrolled in graduate courses he was a residence hall director at GFC, in that position for three years. Currently he is in a doctoral degree program at Oregon State University.

As softball coach he directed his teams to a 77-99-1 record and in 1985 he was named NAIA District 2 Coach of the Year for softball. He has coached the Lady Bruins in basketball to a 149-140 record.

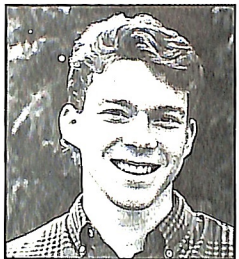
Taylor is a member of the NAIA District 2's Executive Committee, serving since 1985.

At George Fox the athletic director is responsible for athletic department functions, including eligibility and compliance with GFC and NAIA regulations, budgeting, and department and sports center management.



ROB FELTON is in his first year as Sports Information Director for George Fox's 11 athletic teams. A 1992 GFC graduate with a degree in communication arts, Felton was a GFC Sports Information Assistant for three years. Felton, 22, replaces Barry Hubbell, who has held the position since 1970. Hubbell remains in a supervisor role as Director of Sports Relations.

Felton, a 3.8 honors student, was named Outstanding Student in Communication Arts and to *Who's Who Among Students in American Colleges and Universities*. He was sports editor for the student newspaper, *The Crescent*, for two years and editor as a sophomore.



BRUIN STAFF

MIKE WIRTA is in his 22nd year as George Fox basketball statistician. Called "Biggs" by his friends, Wirta is a 1974 George Fox graduate and one of the most loyal Bruin's fans. A member of the College's physical plant staff, Wirta, 43, has the upkeep of the sports center as his major responsibility. A Newberg native, he devotes many volunteer hours to compiling statistics and records for the players and teams recorded in this book.



In 1988 the College's Alumni Association named Wirta its Volunteer of the Year, just the second person to receive the designation.

STEVE CURTIS is in his sixth year as trainer for the basketball Bruins – and all GFC athletic teams. A 1982 GFC graduate with a degree in physical education, Curtis received a master's degree in teaching from Portland State University in 1987. He is a certified athletic trainer by the Board of Certification of the National Athletic Trainers Association.



Curtis, 33, was head trainer, teacher, and activities director at Franklin High School, Portland, prior to joining the GFC athletic staff. He is a native of Monmouth, Oregon, and a graduate of Salem Academy. While student teaching at GFC he served as assistant coach for the track Bruins in the 1982-83 school year.

Curtis has a long – and successful – association with track. He was the NAIA District 2 hammer throw champion for three consecutive years, 1980-82, finishing 11th and 12th nationally in the event. He also was third in the district in the discus his senior year, when he was named the Bruin MVP.

At GFC Curtis not only is an athletic trainer for 11 sports but is an instructor in physical education, teaching athletic training classes and the exercise science classes. He and his wife, Karen, have two sons, Christopher, 6, and Kendall, 3.

ASSISTANT COACH – Tom Ketelsen

DIRECTOR OF SPORTS RELATIONS – Barry Hubbell

SPORTS INFORMATION ASSISTANT – Gennie Sluder

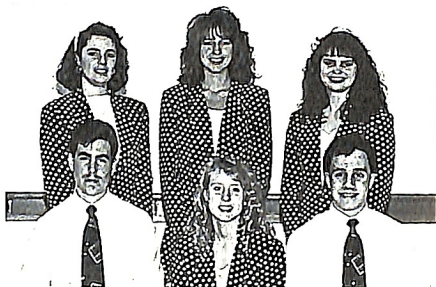
SCOREKEEPER – Don Millage

CLOCK – Bob Stewart, Quincy Fodge, Larry Herrick, Jack Harris

STATISTICAL ASSISTANT – Randy Hutchins

BALL BOYS – Nathan Chamberlain, Jeffrey Barram, Sean Powers

BRUIN HOSTS / HOSTESSES



Left to right, back row: Ziemann, Sivley, Stevens. Front row: Bryant, Daniels, Dalke, (Not shown – Peterson).

George Fox College's "official greeters" for the 1992-93 basketball season are the Bruin Hosts and Hostesses. The specially selected group of seven students is in charge of hospitality for the Coleman Wheeler Sports Center. They welcome fans; take tickets; distribute programs; provide news media, stats crews and other special guests with refreshments and assist with the post-season basketball awards dessert.

Leading the 19-year-old organization this year is Cathy Stevens, a senior business major from Newberg. Returning members are Terri Sivley of Newberg, a senior business major; Paulie Ziemann of Central Point, Ore., a senior elementary education major; and Christine Peterson of Hayden Lake, Idaho, a senior psychology major.

New members are Tammy Daniels of Stanwood, Wash., a senior health and physical education major; Brandon Dalke of Beaverton, Ore., a freshman liberal arts major; and Zachariah Bryant of Veneta, Ore., a freshman liberal arts major.

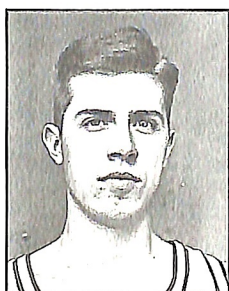
BRUIN RALLY SQUAD



Left to right, back row: Ortman, Comolli, Howell, Barnett. Front row: Schwan, Brochu and Yntema.

Bruin basketball cheers are led by a seven-member squad selected by tryout. 1992-93 Members are Sunni Brochu, of Ashland, Ore., a junior elementary education major; Jodie Howell of Lakeview, Ore., a sophomore interdisciplinary major; Christy Ortman of Boise, Idaho, a freshman liberal arts major; Anne Comolli of Anchorage, Ala., a sophomore liberal arts major; Angela Barnett of Boise, Idaho, a freshman liberal arts major; Rebecca Schwan of Kennewick, Wash., a freshman liberal arts major and Carrie Yntema of Vancouver, Wash., a junior social studies education major. The rally advisor is Melinda Bissell, a 1992 GFC grad.

THE BRUINS - AS INDIVIDUALS



JAMIE BOUTIN

Junior
6-7 • 190
Post / Wing

Eugene, Ore.
(Pocatello High, Idaho)
(Pacific Lutheran Univ.)
(Lane CC)

The 1992 MVP of all Oregon and Washington community college players . . . All-American potential . . . averaged 22.9 points and 6.3 rebounds a game last season at Lane Community . . . tournament MVP when his team won the Northwest Athletic Association of Community Colleges championship last spring . . . Idaho Player of the Year as high school senior, averaging 21.3 points and 6.2 rebounds a game . . . has ability to follow his father, Jim, a three-time NAIA All-American for Lewis & Clark College who coached Willamette for 12 years and Western Oregon for 6 . . . last season hit 52 percent of shots from field, 87 percent at the line . . . a team captain . . . a business major . . . favorite foods: steak, fettuccine . . . hobbies: golf, tennis, art history . . . most influential person in life: father . . . person most admired: Washington Bullet Rex Chapman, Charlotte Hornet Kendall Gill . . . born: Mar. 8, 1971, son of Jim and Jan Boutin. Name pronunciation: "BO-tan."

MARK'S REMARKS: *"Jamie is the best scorer I've ever recruited - he has the ability to put up big numbers in the scoring department, but his game also is very complete. He is a top quality player."*



DAN CORBUS

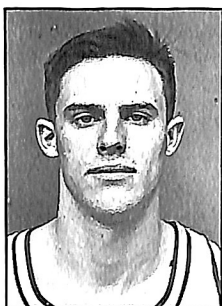
Sophomore
6-0 • 170
Point

Tillamook, Ore.
(Tillamook High)

The only freshman guard to make the team a year ago . . . now the only sophomore on this year's team . . . started in one game last season (SOSC) and dished out five assists . . . an Oregon AAA first-team all-state selection as high school senior . . . MVP and captain of senior team, averaging 16.5 points and 7.5 assists a game . . . good passer . . . drives well to basket . . . working on floor leadership . . . a communication arts major . . . favorite food: pizza . . . hobbies: tennis, bike riding, walking . . . most influential persons in life: mother and father . . . person most admired: high school coach Bob Lamb . . . born: Jan. 3, 1971, son of Jim Corbus, Elinor Corbus.

MARK'S REMARKS: *"Dan will give us valuable minutes coming off the bench this year. He does a good job of getting the ball to the right people at the right times."*

| Year | G | FG | % | 3 Pt. | % | FT | % | Rb. | Avg. | Ast. | Pts. | Avg. |
|-------|---|------|-----|-------|-----|------|-----|-----|------|------|------|------|
| 91-92 | 7 | 3 10 | 300 | 0 2 | 000 | 8 10 | 800 | 5 | 0 7 | 9 | 14 | 2 0 |



MIKE DAVIDSON

Freshman
6-1 • 200
Wing

West Linn, Ore.
(West Linn High)

A potential starter even as a freshman . . . captain and all-star at two high schools: Santiam as a junior when he was named to the first-team AA all-state squad and West Linn as a senior when he was named to Three Rivers all-league team (with second-highest vote total) and AAA all-state honorable mention . . . averaged 31.2 points, 7.1 rebounds, and 5.3 assists a game at Santiam . . . averaged 15.7 points, 4.8 rebounds, 2.0 assists at West Linn . . . excellent jump shooter . . . jumps very well . . . very strong driving to basket . . . needs NAIA-level experience . . . redshirted last season . . . a biology major . . . favorite food: hamburgers . . . hobbies: backpacking . . . most influential person in life: father . . . person most admired: Phoenix Sun Kurt Rambis . . . born: Oct. 27, 1972, son of Dennis and Mary Davidson.

MARK'S REMARKS: *"Mike is a gifted scorer – you must defend his jump shot. He should give us good minutes, whether he starts or comes off the bench."*



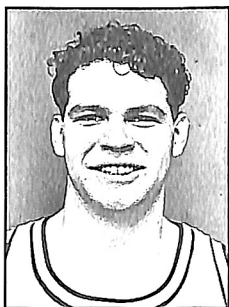
AARON DOWNS

Freshman
6-2 • 175
Point

West Linn, Ore.
(West Linn High)

A player who beat the odds to make the team . . . averaged 10 points, 3 rebounds, and 7 assists a game on team that finished eighth in Oregon AAA play last spring . . . second-team Tri-Rivers League all-star . . . good floor leader . . . intelligent player with excellent instincts . . . working on improving outside shooting and strength . . . a secondary education teaching major . . . favorite food: pizza . . . hobbies: church youth group, movies, collecting basketball cards . . . most influential persons in life: mother and father . . . person most admired: Cleveland Cavalier Mark Price . . . born: Aug. 9, 1974, son of Duane and Sherry Downs.

MARK'S REMARKS: *"Aaron is a hardworking player who will help our team improve in practice. He may redshirt this season or play – we'll make the decision before the season. He's the fourth player out of coach Bart Valentine's West Linn program in the last four years."*



LORIN FIELDS

Freshman
6-6 • 230
Post

Beaverton, Ore.
(Beaverton High)

The first second-generation player for the NAIA Bruins – father, Ed, helped GFC to first-ever national playoff berth in 1973 ... born in father's senior year, he is named for former coach Lorin Miller ... Metro League first team as senior, averaging 15 points and 9 rebounds a game ... team MVP, Most Inspirational, and captain as senior ... selected to Metro-State all-star teams ... played for AAU state team against former Soviet Union squad ... extremely strong ... plays tough defense ... good rebounder and sets good screens ... redshirted last year ... a left-hander ... an engineering major ... favorite food: cherry cheesecake ... hobbies: music ... most influential persons in life: mother and father ... person most admired: none ... born: Oct. 19, 1972, son of Ed and Barb Fields.

MARK'S REMARKS: *"Lorin defines the word 'banger.' He knows his role very well. I look for him to give us some high quality minutes in games this year."*



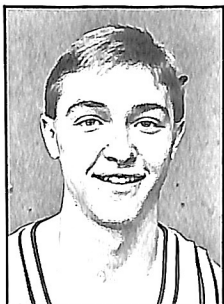
RICK GARDEA

Junior
6-1 • 170
Point / Wing

Clatskanie, Ore.
(Clatskanie High)
(Lower Columbia CC)

One of a pair of Lower Columbia Community guards (Jay Short is the other) to transfer to GFC this season ... named to Northwest Athletic Association of Community Colleges all-tournament team as the Red Devils finished third ... co-MVP of team, averaging 14.2 points a game, hitting 52 percent from field and 78 percent at line ... averaged 5.3 assists a game ... can score from the perimeter but also is effective in penetrating to the basket and making plays ... good passer and intelligent floor leader ... a physical fitness management major ... favorite food: Mexican, pizza ... hobbies: tennis, golf, spending time with little brother ... most influential person in life: mother ... person most admired: former Trail Blazer now Phoenix guard Danny Ainge ... born: July 21, 1971, son of Randy and Janice Lund. Name pronunciation: "Gard-E-uh."

MARK'S REMARKS: *"Rick will play both point and wing this season, but we will count on him mostly at point. He is a potential starter who will give us good shooting from the perimeter and smart floor play."*



NICK HAIJ

Freshman
6-1 • 165
Wing

Vancouver, Wash.
(Columbia River High)

A player Coach Vernon says could be the best scoring guard in George Fox history . . . set Washington AAA record last spring in hitting 14 three-point baskets in four tournament games, finishing second in tournament scoring . . . named to Southwest Washington Super Five first team, second in balloting . . . all-league pick as he averaged 18.0 points, 7.2 rebounds, and 4.1 assists a game as team captain . . . super three-point shooter (45 percent) . . . good passer and strong rebounder for guard . . . potential starter but lacking college-level experience . . . a business major . . . favorite food: pasta . . . hobbies: sports card collecting, golf, and tennis . . . most influential persons in life: mother and father . . . person most admired: Trail Blazer Terry Porter . . . born: Mar. 2, 1974, son of David and Kathy Haij. Name pronunciation: "HI."

MARK'S REMARKS: *"Nick has a great career ahead of him at George Fox. He can knock down the three-pointer from anywhere and he plays with confidence well beyond his years. He could have some big nights even as a freshman."*



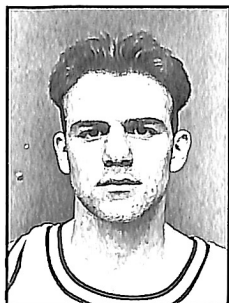
DUSTIN HARRINGTON

Freshman
6-4 • 185
Wing

Albany, Ore.
(Santiam Christian)

First-team AA all-state player at Santiam Christian where he averaged 22 points and 10 rebounds a game . . . all-league MVP as senior . . . captained team three years . . . good jump shooter . . . runs floor well . . . intelligent player (high school salutatorian) . . . has added 20 pounds since high school, but still adding strength . . . a redshirt last year . . . a premed major . . . a left-hander . . . favorite food: Mexican . . . hobbies: hunting, fishing, outdoors . . . most influential person in life: father . . . person most admired: none . . . born: Oct. 17, 1972, son of Rod and Cathie Harrington.

MARK'S REMARKS: *"Dustin is another young player who we will count on this year, either as a starter or a sixth or seventh man. He has improved tremendously since high school and has a bright future ahead of him."*



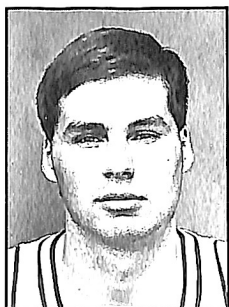
GRANT HARTENSTEIN

Freshman
5-10 • 165
Point

Colton, Ore.
(Colton High)

Oregon's 1991 AA Player of the Year, guiding team to state title ... won every prep award available to him: Tri-River League MVP, first-team all-state, first-team all-tournament ... KATU-TV Athlete of Month—Feb. 1991 ... averaged 21.7 points, 7.1 rebounds, 9.4 assists, 3.7 steals a game as senior ... MVP of West team in East-West summer all-star series ... good perimeter shooter ... potential starter ... excellent in penetrating to basket ... one of five redshirt freshmen on team ... a liberal arts major ... favorite food: steak ... hobbies: reading ... most influential persons in life: mother and father ... person most admired: grandmother ... born: June 15, 1972, son of Will and Joyce Hartenstein. Name pronunciation: "Har-ten-STYne."

MARK'S REMARKS: "Grant gives us a top-quality point guard we can count on for the next four years. He could start or come off the bench. He can score and play excellent defense as well as run the team."



MARK HEROLD

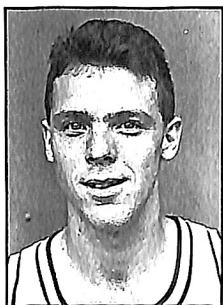
Senior
6-8 • 220
Post

Longview, Wash.
(Mark Morris High)
(Lower Columbia CC)

The tallest of the Bruins ... a potential starter who didn't get a lot of playing time last season because of GFC's All-American front-line talent ... a hard worker ... good shooter from 17 feet and in ... excellent passer from the high post ... good defensive player ... a first team Northwest Athletic Association of Community Colleges all-star as sophomore at Lower Columbia ... MVP and captain, averaging 17.6 points and 11.6 rebounds on team that finished second in NWAACC playoffs ... a left-hander ... a physical education secondary teaching major ... favorite food: Mexican ... hobbies: sports, baseball cards ... most influential person in life: LeRoy Nelson, friend ... person most admired: former coach Lance Roberts ... born: June 22, 1970, son of Ted and Marilyn Herold.

MARK'S REMARKS: "Mark will be an important factor for us this season. He is a 'gamer' and will complement Mike [Rasmussen] and Jamie [Boutin] on the front line."

| Year | G | FG | % | 3 Pt. | % | FT | % | Rb. | Avg. | Ast. | Pts. | Avg. |
|-------|----|-------|------|-------|------|-------|------|-----|------|------|------|------|
| 91-92 | 29 | 33/56 | .589 | 1/2 | .500 | 27/43 | .628 | 82 | 2.8 | 13 | 94 | 3.3 |



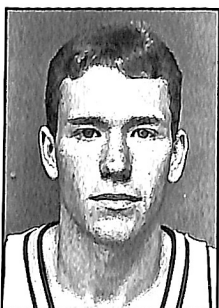
DAN POET

Freshman
6-2 • 180
Wing

Springfield, Ore.
(Pleasant Hill High)

Won a place on the team through all-out hustle . . . freshman eligibility after transferring last year from Lane Community where he did not play . . . hard worker . . . good shooter who needs to shoot more . . . aggressive defensive player . . . a physical education major . . . favorite food: Mexican . . . hobbies: tennis and golf . . . most influential person in life: mother . . . person most admired: University of North Carolina coach Dean Smith . . . born: Feb. 26, 1969, son of Benny Poet, John Poet.

MARK'S REMARKS: *"Dan gives everything of himself each and every day in practice. He has the ability to give us the spark in games when we need it - he's the Tim Harris (three-time Most Inspirational) replacement."*



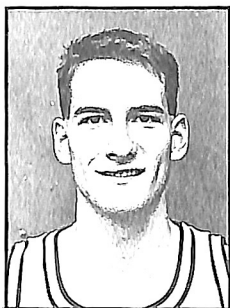
JAY SHORT

Junior
5-11 • 170
Wing

Chimacum, Wash.
(Chimacum High)
(Lower Columbia CC)

One of a pair of guards (Rick Gardea is the other) transferring from Lower Columbia Community College . . . named to NWAACC western division all-star second team . . . averaged 12.8 points and 3.5 assists a game last season . . . at Chimacum High averaged 22 points and 5 assists a game as team captain and all-league selection . . . outstanding three-point shooter (averaged 46 percent last year) . . . excellent shot selection . . . tenacious defense . . . becomes eligible second semester . . . a physical education major . . . favorite food: pizza . . . hobbies: basketball cards . . . most influential person in life: high school coach Matt Thacker . . . persons most admired: mother and father . . . born: June 17, 1972, son of Jerry and Kristi Short.

MARK'S REMARKS: *"Jay will be competing for a starting position. We will miss him in the first 10 games of the season, but he will be a big factor in our conference season on his return."*



MIKE RASMUSSEN

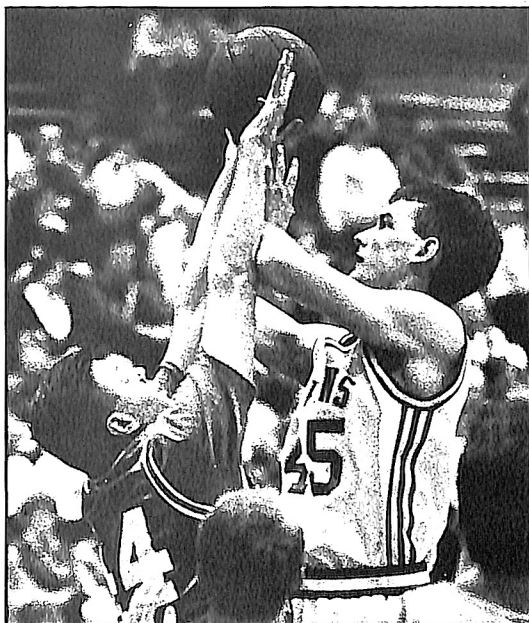
Senior
6-7 • 220
Post

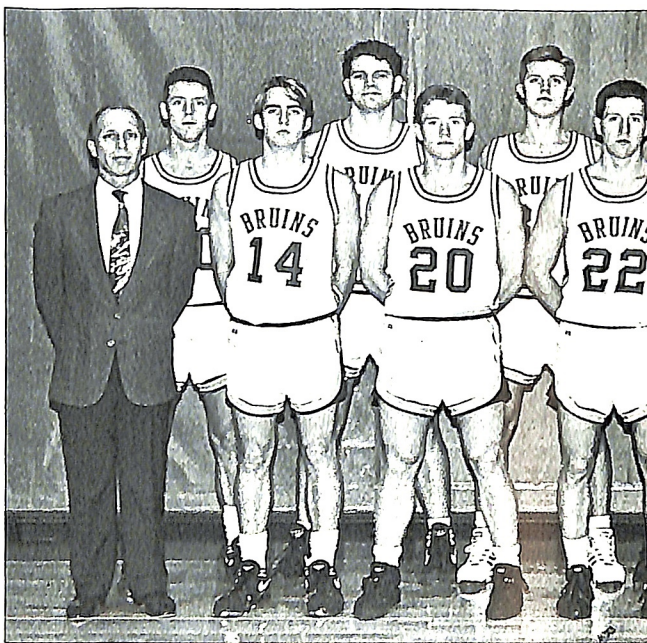
Wilsonville, Ore.
(West Linn High)

A starter who has improved every year after being named Most Improved as freshman ... gained experience battling All-American Dave Wilson at post ... has improved strength, rebounding, and aggressiveness ... scores well with jump hook and has a good shooting touch 15 feet and in ... one of GFC's most accurate from the field (.551 last year) ... has variety of inside moves ... a team captain ... a business major ... favorite food: pizza ... hobbies: sports, watching TV, movies ... most influential persons in life: grandparents ... persons most admired: mother and father ... born: May 7, 1971, son of Bill and Jan Rasmussen. Name pronunciation: "RAS-muh-son."

MARK'S REMARKS: "Mike is out from behind the shadow of Dave Wilson and could be one of the best big men in the district this year. He needs to score points and rebound this year for us to be successful."

| Year | G | FG | % | 3 Pt. | % | FT | % | Rb. | Avg. | Ast. | Pts. | Avg. |
|--------|----|---------|------|-------|------|---------|------|-----|------|------|------|------|
| 89-90 | 27 | 51/113 | .451 | 0/0 | .000 | 24/42 | .571 | 94 | 3.5 | 9 | 126 | 4.7 |
| 90-91 | 26 | 92/172 | .535 | 0/0 | .000 | 44/66 | .667 | 117 | 4.5 | 13 | 228 | 8.8 |
| 91-92 | 35 | 140/254 | .551 | 0/1 | .000 | 46/60 | .767 | 164 | 4.7 | 37 | 326 | 9.3 |
| Career | 88 | 283/539 | .525 | 0/1 | .000 | 114/168 | .679 | 375 | 4.2 | 59 | 680 | 7.7 |





1992-93 Bruins left to right: Asst. Coach Steve Grant, Rick Gardea, Mike Rasmussen, Nick Haij, Mark Herold, Michael Davidson

| No. | Name | Pos. | Height | Weight | Age | Year |
|-----|--------------------|------------|--------|--------|-----|------|
| 12 | HARTENSTEIN, Grant | Point | 5-10 | 165 | 20 | F |
| 14 | CORBUS, Dan | Point | 6-0 | 170 | 21 | S |
| 20 | SHORT, Jay | Wing | 5-11 | 170 | 20 | J |
| 21 | HAIJ, Nick | Wing | 6-1 | 165 | 18 | F |
| 22 | GARDEA, Rick | Point/Wing | 6-1 | 170 | 21 | J |
| 24 | DAVIDSON, Mike | Wing | 6-1 | 200 | 20 | F |
| 30 | POET, Dan | Wing | 6-2 | 180 | 23 | F |
| 32 | DOWNS, Aaron | Point | 6-2 | 175 | 18 | F |
| 33 | HARRINGTON, Dustin | Wing | 6-4 | 185 | 20 | F |
| 34 | BOUTIN, Jamie | Post/Wing | 6-7 | 190 | 21 | J |
| 41 | FIELDS, Lorin | Post | 6-6 | 230 | 20 | F |
| 42 | HEROLD, Mark | Post | 6-8 | 220 | 22 | S |
| 45 | RASMUSSEN, Mike | Post | 6-7 | 220 | 21 | S |

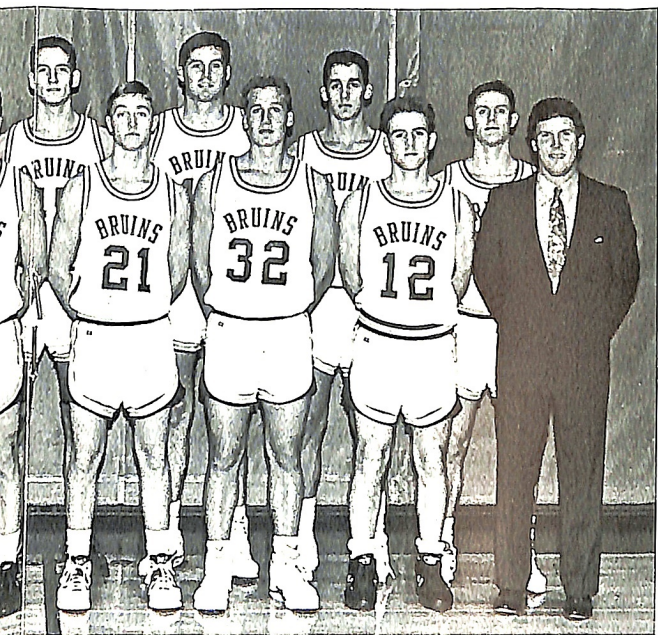
* Redshirted 1991-92

ALPHABETICAL ROSTER

Boutin, Jamie (34)
Corbus, Dan (14)
Davidson, Mike (24)
Downs, Aaron (32)

Fields, Lorin (41)
Gardea, Rick (22)
Haij, Nick (21)

1992-93 BASKETBALL ROSTER



Dan Poet, Dan Corbus, Lorin Fields, Jay Short, Jamie Boutin, Herold, Aaron Downs, Dustin Harrington, Grant Hartenstein, Poet, Dan (30), Coach Mark Vernon.

| Year | Exp. | Hometown (School) |
|------|--------|--|
| Fr. | HS | Colton, Ore. (Colton) |
| So. | IV | Tillamook, Ore. (Tillamook) |
| Jr. | 2CC | Chimacum, Wash. (Chimacum) (Lower Columbia CC) |
| Fr. | HS | Vancouver, Wash. (Columbia River) |
| Jr. | 2CC | Clatskanie, Ore. (Clatskanie) (Lower Columbia CC) |
| Fr. | HS | West Linn, Ore. (West Linn) |
| Jr. | HS | Springfield, Ore. (Pleasant Hill) |
| Fr. | HS | West Linn, Ore. (West Linn) |
| Jr. | HS | Albany, Ore. (Santiam Christian) |
| Fr. | IV/1CC | Eugene, Ore. (Pocatello, Idaho) (Pacific Lutheran) (Lane CC) |
| Jr. | HS | Beaverton, Ore. (Beaverton) |
| Fr. | 2CC/1V | Longview, Wash. (Mark Morris) (Lower Columbia CC) |
| Jr. | 3V | Wilsonville, Ore. (West Linn) |

| | |
|-------------------------|----------------------|
| Harrington, Dustin (33) | Poet, Dan (30) |
| Hartenstein, Grant (12) | Rasmussen, Mike (45) |
| Herold, Mark (42) | Short, Jay (20) |

BRUIN RECORDS

(Since Joining NAIA)

INDIVIDUAL SINGLE GAME RECORDS

| | | |
|--|----------------------------|----------------------------------|
| Most Points – 50 | Jeff Hoffman | vs. Columbia Christian 2/14/91 |
| Most Field Goals – 19 | Jeff Hoffman | vs. Columbia Christian 2/14/91 |
| Most Field Goals Att. – 31 | Larry Craven | vs. Southern Oregon 1/26/69 |
| Best Field Goals Pct. – 1.000 (10-10) | J. R. Smith | vs. Columbia Christian 1/29/82 |
| Best Field Goals Pct. (with miss) – .933 (14-15) | Paul Cozens | vs. Pacific 12/17/76 |
| Most 3-Point Goals – 6 | Jeff Hoffman | vs. Columbia Christian 2/14/91 |
| Most 3-Point Attempts – 15 | Kurt Ronnow | vs. Northwestern of Iowa 3/14/92 |
| Best 3-Point Percentage – 1.000 (6-6) | Jeff Hoffman | vs. Columbia Christian 2/14/91 |
| Most Free Throws Made – 16 | Kenny Stone (16-19) | vs. College of Idaho 1/28/87 |
| Most Free Throws Att. – 19 | Kenny Stone (16-19) | vs. College of Idaho 1/28/87 |
| Best Free Throw Pct. – 1.000 | Paul Cozens (12-12) | vs. Warner Pacific 2/21/78 |
| Best Free Throw Pct. (with miss) – .933 | Tom Hewitt (14-15) | vs. Pacific 12/18/75 |
| | Hille van der Kooy (14-15) | vs. Eastern Oregon 12/5/80 |
| | Randy Dunn (14-15) | vs. Linfield 1/6/84 |
| Most Rebounds – 25 | Gordy Loewen | vs. Warner Pacific 2/11/71 |
| Most Off. Reb. – 16 | Gordy Loewen | vs. Warner Pacific 2/11/71 |
| Most Def. Reb. – 20 | Eric Swanson | vs. NNC 2/8/88 |
| Most Assists – 20 | Brian Martin | vs. Warner Pacific 1/19/91 |
| Most Turnovers – 11 | Gary Chenault | vs. Portland State 1/13/78 |
| Most Steals – 11 | Curtis Kimbrough | vs. U.C. – San Diego 12/19/84 |
| | Jeff Richards | vs. Dominican 1/2/88 |
| Most Blocked Shots – 13 | Dave Wilson | vs. Northwest Christian 11/19/91 |

INDIVIDUAL SEASON RECORDS

| | | |
|---------------------------------------|----------------|---------|
| Most Points – 799 | Dave Wilson | 1991-92 |
| Best Average – 23.9 | Paul Cozens | 1977-78 |
| Most Field Goals Made – 299 | Dave Wilson | 1991-92 |
| Most Field Goals Att. – 500 | Rob Wunder | 1973-74 |
| Best Field Goal Pct. – .642 (122-190) | Dave Wilson | 1987-88 |
| Most Consecutive Field Goals – 16 | J. R. Smith | 1981-82 |
| Most 3-Points Made – 59 | Michael Pierce | 1991-92 |
| Most 3-Point Attempts – 147 | Michael Pierce | 1991-92 |
| Best 3-Point Pct. – .500 (48/96) | Dan Newman | 1987-88 |
| Most Free Throws Made – 201 | Dave Wilson | 1991-92 |
| Most Free Throws Att. – 249 | Dave Wilson | 1991-92 |
| Best Free Throw Pct. – .932 (69-74) | Dan Newman | 1986-87 |
| Most Consecutive Free Throws – 56 | Gary Chenault | 1978-79 |
| Most Rebounds – 422 | Randy Dunn | 1981-82 |
| Most Offensive Rebounds – 138 | Randy Dunn | 1981-82 |
| Most Defensive Rebounds – 287 | Eric Swanson | 1987-88 |
| Best Rebound Average – 12.90 | Jeff Hoffman | 1990-91 |
| Most Assists – 340 | Brian Martin | 1990-91 |
| Best Assist Average – 11.33 | Brian Martin | 1990-91 |

| | | | |
|-----------------------------|-------|------------------|---------|
| Most Blocked Shots – 170 | | Dave Wilson | 1987-88 |
| Best Block Average – 5.15 | | Dave Wilson | 1987-88 |
| Most Turnovers – 132 | | Mike Royer | 1981-82 |
| Most Steals – 110 | | Curtis Kimbrough | 1986-87 |
| Best Steal Average – 3.48 | | Curtis Kimbrough | 1985-86 |
| Most Fouls – 116 | | Dave Mauermann | 1982-83 |
| Highest Foul Average – 3.74 | | Dave Mauermann | 1982-83 |
| Most Games Played – 35 | | 7 Players tied | 1991-92 |

INDIVIDUAL CAREER RECORDS

| | | | |
|---|-------|--------------------|---------|
| Most Points – 2,296 | | Dave Wilson | 1987-92 |
| Best Average – 20.53 | | Hille van der Kooy | 1979-81 |
| Most Field Goals Made – 895 | | Paul Cozens | 1974-78 |
| Most Field Goals Att. – 1,620 | | Paul Cozens | 1974-78 |
| Best Field Goal Pct. – .621 | | Dave Wilson | 1987-92 |
| Most 3-Points Made – 90 | | Rich Schlachter | 1989-90 |
| Most 3-Point Attempts – 261 | | Rich Schlachter | 1989-90 |
| Best 3-Point Percentage – .479 (80/167) | | | |
| | | Dan Newman | 1986-88 |
| Most Free Throws – 534 | | Dave Wilson | 1987-92 |
| Most Free Throws Att. – 691 | | Dave Wilson | 1987-92 |
| Best Free Throw Pct. – .870 | | Gary Chenault | 1976-79 |
| Most Rebounds – 1,147 | | Paul Cozens | 1974-78 |
| Most Offensive Rebounds – 335 | | Randy Dunn | 1981-84 |
| Most Defensive Rebounds – 821 | | Paul Cozens | 1974-78 |
| Best Rebound Average – 11.69 | | Jeff Hoffman | 1990-92 |
| Most Assists – 614 | | Brian Martin | 1989-91 |
| Best Assist Average – 9.59 | | Brian Martin | 1989-91 |
| Most Steals – 341 | | Curtis Kimbrough | 1983-87 |
| Best Steal Average – 2.94 | | Curtis Kimbrough | 1983-87 |
| Most Games Played – 131 | | Dave Wilson | 1987-92 |
| Most Personal Fouls – 348 | | Dave Wilson | 1987-92 |
| Most Blocked Shots – 598 | | Dave Wilson | 1987-92 |
| Best Blocked Shots Average – 4.56 | ... | Dave Wilson | 1987-92 |

TEAM SINGLE GAME RECORDS

| | | | |
|---|-------|-------------------------|-------------------|
| Most Points – 143 | | vs. Northwest | (143-56) 1/23/87 |
| Least Points – 33 | | vs. Eastern Oregon | (33-30) 2/6/81 |
| Least Points Against – 30 | | vs. Eastern Oregon | (33-30) 2/6/81 |
| Most Points Against – 124 | | vs. Portland State | (124-81) 1/13/78 |
| Biggest Winning Margin – 87 | | vs. Northwest | (143-56) 1/23/87 |
| Biggest Losing Margin – 62 | | vs. Lewis & Clark | (112-50) 1/15/70 |
| Most Field Goals – 57 | | vs. Northwest | (1/23/87) |
| Most Field Goals Att. – 114 | .. | vs. Columbia Christian | 1/8/74 |
| Best Field Goal Pct. – .714 | | vs. Columbia Christian | (40-56) 1/29/82 |
| Worst Field Goal Pct. – .202 | ... | vs. Pacific | (21-104) 12/10/67 |
| Most 3-Point Goals – 11 | | vs. Concordia | 3/10/88 |
| | | vs. Lewis & Clark | 1/27/90 |
| Most 3-Point Attempts – 31 | | vs. Willamette | 2/29/92 |
| Best 3-Point Percentage – .778 (7/9) | .. | vs. St. Martins | 1/6/87 |
| | | vs. Northwest Christian | 1/20/89 |
| Most Free Throws Made – 39 | | vs. Lewis & Clark | (39-47) 1/8/71 |
| Most Free Throws Att. – 50 | | | |
| | | vs. Northwest Nazarene | (30-50) 2/14/70 |
| | | vs. Western Oregon | (38-50) 2/15/86 |
| Best Free Throw Pct. – 1.000 | | vs. Warner Pacific | (6-6) 2/12/77 |
| Best Free Throw Pct. (with miss) – .923 | | | |
| | | vs. Northwest Nazarene | (36-39) 2/9/76 |

Most Rebounds – 104 vs. Columbia Christian 1/8/74
 Most Assists – 41 vs. Northwest 1/23/87
 Most Turnovers – 48 vs. Whitman 12/19/72
 Most Personal Fouls – 39 ... vs. Northwest Nazarene 2/4/71
 Most Steals – 31 vs. Dominican 1/2/88
 Most Blocked Shots – 22 .. vs. Northwest Christian 11/19/91

TEAM SEASON RECORDS

| | | |
|------------------------------------|----------------------|---------|
| Most Wins | 29 (29-5) | 1989-90 |
| Best Winning Pct. | .853 (29-5) | 1989-90 |
| Most Losses | 23 (3-23) | 1969-70 |
| Least Losses | 5 (29-5) | 1989-90 |
| Least Wins | 3 (3-23) | 1969-70 |
| Lowest Winning Pct. | .115 (3-23) | 1969-70 |
| Most Points | 3207 | 1991-92 |
| Least Points | 1816 | 1968-69 |
| Most Points Against | 2833 | 1991-92 |
| Least Points Against | 1964 | 1971-72 |
| Highest Scoring Average | 100.4 | 1990-91 |
| Lowest Scoring Average | 66.9 | 1965-66 |
| Highest Scoring Average Against .. | 89.0 | 1969-70 |
| Lowest Scoring Average Against .. | 66.6 | 1965-66 |
| Highest Scoring Margin | 20.4 | 1986-87 |
| Most Field Goals Made | 1258 | 1986-87 |
| Most Field Goals Att. | 2273 | 1991-92 |
| Best Field Goal Pct. | .556 | 1986-87 |
| Most 3-Point Goals | 185 | 1991-92 |
| Most 3-Point Att. | 543 | 1991-92 |
| Best 3-Point Pct. | .416 | 1987-88 |
| Most Free Throws Made | 708 | 1991-92 |
| Most Free Throws Att. | 956 | 1991-92 |
| Best Free Throw Pct. | .775 | 1983-84 |
| Most Rebounds | 1651 | 1991-92 |
| Best Rebound Average | 50.9 | 1990-91 |
| Best Rebound Margin | 10.2 | 1991-92 |
| Most Assists | 834 | 1986-87 |
| Best Assist Average | 26.6 | 1990-91 |
| Most Blocked Shots | 268 | 1989-90 |
| Best Blocked Shots Average | 7.9 | 1989-90 |
| Most Turnovers | 596 | 1985-86 |
| Most Steals | 483 | 1986-87 |
| Best Steal Average | 14.6 | 1986-87 |
| Most Personal Fouls | 704 | 1984-85 |
| Longest Winning String | 15 (games 8 thru 22) | 1986-87 |
| Longest Loss String | 18 (games 8 thru 25) | 1969-70 |

MILLER GYM RECORDS

INDIVIDUAL

| | |
|--------------------------------------|---|
| Most Points – 50 | Jeff Hoffman (GFC) vs. Columbia Christian 2/14/91 |
| Most Field Goals – 20 | Mark Wickman (Linfield) vs. GFC 1/2/78 |
| Most Field Goals Att. – 29 | Vinne Forks (SOSC) vs. Concordia 12/21/79 |
| Best Field Goal Pct. – 1.000 (10-10) | J. R. Smith (GFC) vs. Columbia Christian 1/29/82 |
| Most Free Throws – 16 | Kenny Stone (GFC) vs. College of Idaho 11/28/87 |
| Most Free Throws Att. – 19 | Kenny Stone (GFC) vs. College of Idaho 11/28/87 |
| Best Free Throw Pct. – 1.000 (12-12) | Paul Cozens (GFC) vs. Warner Pacific 1/21/78 |
| Most Rebounds – 23 | Hille van der Kooy (GFC) vs. Eastern Oregon 12/5/80 Eric Swanson (GFC) vs. Northwest Nazarene 2/5/88 |
| Most Assists – 20 | Brian Martin (GFC) vs. Warner Pacific 1/19/91 |
| Most Steals – 9 | Jeff Rust (Western Baptist) vs. Warner Pacific 3/5/82 Toby Long (GFC) vs. Northwest 1/23/87 |
| Most Blocks – 12 | Dave Wilson (GFC) vs. Pacific 11/17/89 |

TEAM

| | |
|--------------------------------------|--|
| Most Points – 143 | GFC (vs. Northwest) 1/23/87 |
| Most Field Goals – 57 | GFC (vs. Northwest) 1/23/87 |
| Most Field Goals Att. – 93 | Northwest Nazarene (vs. Warner Pacific) 12/2/77 |
| Best Field Goal Pct. – .714 (40-56) | GFC (vs. Columbia Christian) 1/29/82 |
| Most Free Throws – 42 | Concordia (vs. SOSC) 12/21/79 |
| Most Free Throws Att. – 52 | Concordia (vs. Warner Pacific) 12/6/81 |
| Best Free Throw Pct. – 1.000 (13-13) | Judson Baptist (vs. Concordia) 3/5/82 |
| Most Rebounds – 71 | GFC (vs. Warner Pacific) 2/17/90 |
| Most Assists – 41 | GFC (vs. Northwest) 1/23/87 |
| Most Steals – 28 | GFC (vs. Northwest) 1/23/87 |
| Most Blocks – 15 | GFC (vs. Willamette) 12/2/88 GFC (vs. Pacific) 11/17/89 |

BRUIN TOP TEN

(NAIA Competition)

CAREER SCORING

| Name | Years Played | Games | Total | Average |
|---------------|---------------------|-------|-------|---------|
| Dave Wilson | 1987-92 | 131 | 2296 | 17.52 |
| Paul Cozens | 1974-78 | 113 | 2187 | 19.35 |
| Dan Newman | 1980-82; 1986-88 | 120 | 2113 | 17.61 |
| Kenny Stone | 1983-87 | 126 | 2050 | 16.27 |
| Randy Dunn | 1981-84 | 88 | 1744 | 19.82 |
| Mike Royer | 1978-82 | 114 | 1367 | 12.00 |
| Dave Adrian | 1975-78; 1979-80 | 103 | 1307 | 12.69 |
| Gordy Loewen | 1968-72 | 100 | 1300 | 13.00 |
| Jeff Hoffman | 1990-92 | 64 | 1264 | 19.75 |
| Gary Chenault | 1976-79 | 86 | 1187 | 13.80 |

CAREER REBOUNDING

| | | | | |
|------------------|---------|-----|------|-------|
| Paul Cozens | 1974-78 | 113 | 1147 | 10.15 |
| Kenny Stone | 1983-87 | 126 | 1116 | 8.86 |
| Dave Wilson | 1987-92 | 131 | 1111 | 8.48 |
| Dave Alteneder | 1965-69 | 104 | 1013 | 9.74 |
| Randy Dunn | 1981-84 | 88 | 994 | 11.30 |
| Gordy Loewen | 1968-72 | 100 | 968 | 9.68 |
| Curtis Kimbrough | 1983-87 | 116 | 797 | 6.87 |
| Ray Willis | 1972-75 | 91 | 771 | 8.47 |
| Jeff Hoffman | 1990-92 | 64 | 748 | 11.69 |
| Gary Blackmar | 1965-68 | 76 | 740 | 9.74 |

CAREER ASSISTS

| | | | | |
|------------------|---------------------|-----|-----|------|
| Brian Martin | 1989-91 | 64 | 614 | 9.59 |
| Al Vasey | 1982-86 | 118 | 520 | 4.41 |
| Mike Royer | 1978-82 | 114 | 509 | 4.46 |
| Curtis Kimbrough | 1983-87 | 116 | 501 | 4.32 |
| Brent Peterson | 1985-89 | 116 | 462 | 3.98 |
| Phil Barnhart | 1977-81 | 113 | 428 | 3.79 |
| Tom Hewitt | 1973-77 | 111 | 404 | 3.64 |
| Dave Adrian | 1975-78; 1979-80 | 103 | 376 | 3.65 |
| Eddie Fields | 1970-73 | 83 | 325 | 3.92 |
| Kenny Stone | 1984-87 | 126 | 316 | 2.51 |
| Curt Scheidel | 1990-92 | 65 | 316 | 4.89 |

CAREER FIELD GOAL ACCURACY

(Minimum two years)

| | | | |
|----------------|---------|----------|------|
| Dave Wilson | 1987-92 | 881/1418 | .621 |
| Eric Swanson | 1986-88 | 431/736 | .586 |
| Kenny Stone | 1983-87 | 794/1388 | .572 |
| Toby Long | 1985-87 | 346/607 | .570 |
| Iiley Thompson | 1982-84 | 188/336 | .560 |
| Paul Cozens | 1974-78 | 895/1620 | .552 |
| Randy Dunn | 1981-84 | 697/1265 | .551 |
| Mike Redmond | 1985-87 | 250/455 | .549 |
| Dave Mauermann | 1981-83 | 245/447 | .548 |
| Eric Smith | 1980-82 | 122/224 | .545 |

CAREER FREE THROW ACCURACY

(Minimum two years)

| | | | |
|-----------------|---------------------|---------|------|
| Gary Chenault | 1976-79 | 195/224 | .870 |
| Dave Morgan | 1970-72 | 84/98 | .857 |
| Paul Cozens | 1974-78 | 397/470 | .845 |
| Al Vasey | 1982-86 | 126/151 | .834 |
| Eric Lautenbach | 1984-88 | 146/177 | .825 |
| Dan Newman | 1980-82; 1986-88 | 380/462 | .822 |
| Jim McNelly | 1965-67 | 82/100 | .820 |
| Randy Dunn | 1981-84 | 350/441 | .794 |
| Larry Jury | 1983-84 | 231/299 | .773 |
| Dave Wilson | 1987-92 | 534/691 | .773 |

CAREER STEALS

| <i>Name</i> | <i>Years Played</i> | <i>Games</i> | <i>Total</i> | <i>Average</i> |
|------------------|---------------------|--------------|--------------|----------------|
| Curtis Kimbrough | 1983-87 | 116 | 341 | 2.94 |
| Kenny Stone | 1983-87 | 126 | 252 | 2.00 |
| Brent Peterson | 1985-89 | 116 | 214 | 1.84 |
| Les Harrison | 1984-86 | 61 | 178 | 2.92 |
| Gary Chenault | 1976-79 | 86 | 161 | 1.87 |

CAREER BLOCKS

| | | | | |
|--------------------|---------|-----|-----|------|
| Dave Wilson | 1987-92 | 131 | 598 | 4.56 |
| Kenny Stone | 1983-87 | 126 | 430 | 3.41 |
| Hille van der Kooy | 1979-81 | 57 | 121 | 2.12 |
| Curtis Kimbrough | 1983-87 | 116 | 74 | .63 |
| Rich Schlachter | 1986-90 | 103 | 74 | .72 |

SEASON SCORING

| <i>Name</i> | <i>Year</i> | <i>Total</i> |
|--------------------|-------------|--------------|
| Dave Wilson | 1991-92 | 799 |
| Paul Cozens | 1977-78 | 692 |
| Jeff Hoffman | 1990-91 | 690 |
| Dave Wilson | 1989-90 | 656 |
| Eric Swanson | 1987-88 | 654 |
| Randy Dunn | 1982-83 | 614 |
| Hille van der Kooy | 1979-80 | 598 |
| Kenny Stone | 1985-86 | 592 |
| Dan Newman | 1987-88 | 591 |
| Randy Dunn | 1981-82 | 581 |

SEASON REBOUNDING

| | | |
|--------------------|---------|-----|
| Randy Dunn | 1981-82 | 422 |
| Eric Swanson | 1987-88 | 397 |
| Jeff Hoffman | 1990-91 | 374 |
| Jeff Hoffman | 1991-92 | 374 |
| Paul Cozens | 1977-78 | 370 |
| Randy Dunn | 1982-83 | 343 |
| Dave Wilson | 1991-92 | 334 |
| Hille van der Kooy | 1979-80 | 333 |
| Hille van der Kooy | 1980-81 | 327 |
| Kenny Stone | 1985-86 | 318 |

SEASON ASSISTS

| | | |
|------------------|---------|-----|
| Brian Martin | 1990-91 | 340 |
| Brian Martin | 1989-90 | 274 |
| Curt Scheidel | 1991-92 | 231 |
| Mike Royer | 1981-82 | 178 |
| Tom Hewitt | 1976-77 | 177 |
| Phil Barnhart | 1979-80 | 172 |
| Al Vasey | 1983-84 | 172 |
| Jeff Bieker | 1981-82 | 168 |
| Curtis Kimbrough | 1985-86 | 163 |
| Jeff Richards | 1988-89 | 160 |

SEASON SCORING AVERAGE

| | | |
|--------------------|---------|------|
| Paul Cozens | 1977-78 | 23.9 |
| Jeff Hoffman | 1990-91 | 23.8 |
| Dave Wilson | 1991-92 | 22.8 |
| Randy Dunn | 1982-83 | 21.2 |
| Randy Dunn | 1983-84 | 21.1 |
| Dan Newman | 1987-88 | 21.1 |
| Hille van der Kooy | 1979-80 | 20.6 |
| Hille van der Kooy | 1980-81 | 20.4 |
| Tim Hardie | 1976-77 | 20.1 |
| Eric Swanson | 1987-88 | 19.8 |

SEASON REBOUNDING AVERAGE

| | | |
|--------------------|---------|-------|
| Jeff Hoffman | 1990-91 | 12.90 |
| Randy Dunn | 1981-82 | 12.79 |
| Paul Cozens | 1977-78 | 12.75 |
| Tom Ackerman | 1968-69 | 12.73 |
| Eric Swanson | 1987-88 | 12.03 |
| Randy Dunn | 1982-83 | 11.83 |
| Gary Blackmar | 1966-67 | 11.80 |
| Hille van der Kooy | 1980-81 | 11.70 |
| Hille van der Kooy | 1979-80 | 11.50 |
| Dave Alteneder | 1967-68 | 10.80 |

SEASON STEALS

| Name | Years Played | Games | Total | Average |
|------------------|--------------|-------|-------|---------|
| Curtis Kimbrough | 1986-87 | 33 | 110 | 3.33 |
| Curtis Kimbrough | 1985-86 | 31 | 108 | 3.48 |
| Curtis Kimbrough | 1984-85 | 34 | 104 | 3.06 |
| Les Harrison | 1984-85 | 34 | 90 | 2.65 |
| Les Harrison | 1985-86 | 27 | 88 | 3.26 |

SEASON BLOCKS

| | | | | |
|-------------|---------|----|-----|------|
| Dave Wilson | 1987-88 | 33 | 170 | 5.15 |
| Dave Wilson | 1989-90 | 34 | 166 | 4.88 |
| Dave Wilson | 1990-91 | 29 | 125 | 4.31 |
| Dave Wilson | 1991-92 | 35 | 137 | 3.91 |
| Kenny Stone | 1984-85 | 34 | 123 | 3.62 |
| Kenny Stone | 1986-87 | 33 | 122 | 3.70 |
| Kenny Stone | 1985-86 | 30 | 112 | 3.73 |
| Kenny Stone | 1983-84 | 29 | 73 | 2.52 |

GAME SCORING

| | | |
|--------------------|------------------------------|----|
| Jeff Hoffman | 2/14/91 (Columbia Christian) | 50 |
| Hille van der Kooy | 12/5/80 (Eastern Oregon) | 42 |
| Paul Cozens | 1/21/78 (Warner Pacific) | 38 |
| Hille van der Kooy | 2/21/81 (Warner Pacific) | 38 |
| Paul Cozens | 2/19/75 (Southern Oregon) | 37 |
| Tom Hewitt | 1/25/77 (Alaska - Anchorage) | 36 |
| Eric Swanson | 2/27/88 (Eastern Oregon) | 36 |
| Paul Cozens | 12/30/75 (Linfield) | 35 |
| Jeff Hoffman | 12/8/90 (Puget Sound) | 35 |
| Jeff Hoffman | 12/29/90 (Eastern Oregon) | 35 |
| Dave Wilson | 1/23/92 (Concordia) | 35 |

GAME REBOUNDING

| | | |
|--------------------|------------------------------|----|
| Gordy Loewen | 2/11/71 (Warner Pacific) | 25 |
| Jeff Hoffman | 11/24/90 (St. Martins) | 24 |
| Hille van der Kooy | 12/5/80 (Eastern Oregon) | 23 |
| Randy Dunn | 2/18/84 (Northwest Nazarene) | 23 |
| Eric Swanson | 2/5/88 (Northwest Nazarene) | 23 |
| Jeff Hoffman | 2/29/92 (Willamette) | 22 |
| Gordy Loewen | 2/22/69 (Southern Oregon) | 22 |

| | | |
|---|--------------------------|----|
| Kenny Stone | 1/24/87 (Eastern Oregon) | 21 |
| Dave Wilson | 1/19/91 (Warner Pacific) | 20 |
| and four other players a total of 8 times | | |

GAME ASSISTS

| | | |
|--------------|------------------------------|----|
| Brian Martin | 1/19/91 (Warner Pacific) | 20 |
| Brian Martin | 2/14/91 (Columbia Christian) | 18 |
| Brian Martin | 2/20/90 (Concordia) | 17 |
| Brian Martin | 1/12/91 (Northwest Nazarene) | 16 |
| Brian Martin | 2/16/91 (Western Baptist) | 16 |
| Brian Martin | 1/5/91 (Western Baptist) | 15 |
| Brian Martin | 2/2/91 (Warner Pacific) | 15 |
| Mike Royer | 1/18/82 (Eastern Oregon) | 14 |
| Les Harrison | 3/1/86 (Warner Pacific) | 14 |
| Brian Martin | 3/2/91 (Linfield) | 14 |

GAME STEALS

| | | |
|------------------|------------------------------|----|
| Curtis Kimbrough | 12/19/84 (U.C.-San Diego) | 11 |
| Jeff Richards | 1/2/88 (Dominican) | 11 |
| Toby Long | 1/23/87 (Northwest) | 9 |
| Curtis Kimbrough | 12/14/85 (Concordia) | 8 |
| Les Harrison | 1/11/86 (Columbia Christian) | 8 |
| Todd Erickson | 2/19/91 (Concordia) | 8 |

GAME BLOCKS

| | | |
|-------------|--------------------------------|----|
| Dave Wilson | 11/19/91 (Northwest Christian) | 13 |
| Dave Wilson | 2/9/88 (Concordia) | 12 |
| Dave Wilson | 11/17/89 (Pacific) | 12 |
| Dave Wilson | 3/10/88 (Concordia) | 11 |
| Dave Wilson | 1/2/88 (Dominican) | 11 |
| Dave Wilson | 12/2/87 (Willamette) | 10 |
| Dave Wilson | 11/25/89 (Seattle Pacific) | 10 |
| Dave Wilson | 11/10/92 (William Jewell) | 10 |

GAME TRIPLE DOUBLES

| Name | Game | Points | Rebounds | Assists | Blocks |
|------------------|--------------------------------|--------|----------|---------|--------|
| Dave Adrian | | | | | |
| | 2/11/78 (College of Idaho) | 10 | 10 | 10 | |
| Kenny Stone | | | | | |
| | 1/17/87 (Northwest Nazarene) | 21 | 11 | 10 | |
| Curtis Kimbrough | | | | | |
| | 1/23/87 (Northwest College) | 12 | 10 | 10 | |
| Dave Wilson | | | | | |
| | 1/2/88 (Dominican) | 14 | 11 | | 11 |
| Dave Wilson | | | | | |
| | 2/9/88 (Concordia) | 20 | 10 | | 12 |
| Dave Wilson | | | | | |
| | 3/10/88 (Concordia) | 18 | 11 | | 11 |
| Jeff Richards | | | | | |
| | 1/14/89 (Northwest Christian) | 15 | 10 | 12 | |
| Brian Martin | | | | | |
| | 3/2/91 (Willamette) | 17 | 10 | 12 | |
| Dave Wilson | | | | | |
| | 11/19/91 (Northwest Christian) | 21 | 12 | | 13 |

YEAR-BY-YEAR LEADERS

SCORING

| Year | Name | Total | Games | Average |
|---------|--------------------|-------|-------|---------|
| 1965-66 | Gary Blackmar | 303 | 28 | 10.82 |
| 1966-67 | Gary Blackmar | 410 | 26 | 15.77 |
| 1967-68 | Gary Blackmar | 321 | 23 | 13.95 |
| 1968-69 | Gordy Loewen | 437 | 26 | 16.81 |
| 1969-70 | Gordy Loewen | 368 | 22 | 16.72 |
| 1970-71 | Sammy Ibarra | 408 | 28 | 14.57 |
| 1971-72 | Gary Berg | 378 | 25 | 15.12 |
| 1972-73 | Sammy Ibarra | 442 | 31 | 14.26 |
| 1973-74 | Rob Wunder | 567 | 30 | 18.90 |
| 1974-75 | Paul Cozens | 441 | 28 | 15.57 |
| 1975-76 | Paul Cozens | 530 | 27 | 19.62 |
| 1976-77 | Tim Hardie | 562 | 28 | 20.07 |
| 1977-78 | Paul Cozens | 692 | 29 | 23.86 |
| 1978-79 | Gary Chenault | 491 | 29 | 16.90 |
| 1979-80 | Hille van der Kooy | 598 | 29 | 20.60 |
| 1980-81 | Hille van der Kooy | 572 | 28 | 20.43 |
| 1981-82 | Randy Dunn | 581 | 33 | 17.61 |
| 1982-83 | Randy Dunn | 614 | 29 | 21.17 |
| 1983-84 | Randy Dunn | 541 | 25 | 21.64 |
| 1984-85 | Kenny Stone | 586 | 34 | 17.24 |
| 1985-86 | Kenny Stone | 592 | 30 | 19.73 |
| 1986-87 | Kenny Stone | 576 | 33 | 17.45 |
| 1987-88 | Dan Newman | 591 | 28 | 21.12 |
| 1988-89 | Pat Casey | 520 | 29 | 17.93 |
| 1989-90 | Dave Wilson | 656 | 34 | 19.30 |
| 1990-91 | Jeff Hoffman | 690 | 29 | 23.79 |
| 1991-92 | Dave Wilson | 799 | 35 | 22.83 |

REBOUNDING

| | | | | |
|---------|--------------------|-----|----|-------|
| 1965-66 | Dave Alteneder | 297 | 28 | 10.61 |
| 1966-67 | Gary Blackmar | 295 | 25 | 11.80 |
| 1967-68 | Dave Alteneder | 282 | 26 | 10.84 |
| 1968-69 | Tom Ackerman | 242 | 19 | 12.73 |
| 1969-70 | Gordy Loewen | 231 | 22 | 10.50 |
| 1970-71 | Gordy Loewen | 275 | 28 | 9.82 |
| 1971-72 | Gordy Loewen | 240 | 25 | 9.60 |
| 1972-73 | Rob Wunder | 265 | 31 | 8.55 |
| 1973-74 | Ray Willis | 289 | 30 | 9.63 |
| 1974-75 | Ray Willis | 277 | 30 | 9.23 |
| 1975-76 | Paul Cozens | 280 | 27 | 10.37 |
| 1976-77 | Paul Cozens | 305 | 29 | 10.51 |
| 1977-78 | Paul Cozens | 370 | 29 | 12.75 |
| 1978-79 | Mike Peregrin | 184 | 29 | 6.34 |
| 1979-80 | Hille van der Kooy | 333 | 29 | 11.50 |
| 1980-81 | Hille van der Kooy | 327 | 28 | 11.69 |
| 1981-82 | Randy Dunn | 422 | 33 | 12.79 |
| 1982-83 | Randy Dunn | 343 | 29 | 11.83 |
| 1983-84 | Randy Dunn | 226 | 25 | 9.04 |
| 1984-85 | Kenny Stone | 285 | 34 | 8.38 |
| 1985-86 | Kenny Stone | 318 | 30 | 10.60 |
| 1986-87 | Kenny Stone | 309 | 33 | 9.36 |
| 1987-88 | Eric Swanson | 397 | 33 | 12.03 |
| 1988-89 | Rich Schlachter | 208 | 30 | 6.93 |
| 1989-90 | Dave Wilson | 294 | 34 | 8.60 |
| 1990-91 | Jeff Hoffman | 374 | 29 | 12.90 |
| 1991-92 | Jeff Hoffman | 374 | 35 | 10.69 |

ASSISTS

| | | | | |
|---------|-----------|-----|----|------|
| 1965-70 | No record | | | |
| 1970-71 | Ed Fields | 120 | 27 | 4.44 |
| 1971-72 | Ed Fields | 71 | 25 | 2.84 |

| | | | | |
|---------|------------------|-----|----|-------|
| 1972-73 | Ed Fields | 103 | 31 | 3.32 |
| 1973-74 | Ray Willis | 122 | 30 | 4.06 |
| 1974-75 | Ray Willis | 128 | 30 | 4.26 |
| 1975-76 | Tom Hewitt | 138 | 27 | 5.11 |
| 1976-77 | Tom Hewitt | 177 | 29 | 6.10 |
| 1977-78 | Dave Adrian | 114 | 29 | 3.93 |
| 1978-79 | Tim Adrian | 96 | 29 | 3.31 |
| 1979-80 | Phil Barnhart | 172 | 30 | 5.92 |
| 1980-81 | Mike Royer | 136 | 28 | 4.86 |
| 1981-82 | Mike Royer | 178 | 33 | 5.39 |
| 1982-83 | Al Vasey | 135 | 31 | 4.35 |
| 1983-84 | Al Vasey | 167 | 28 | 5.96 |
| 1984-85 | Les Harrison | 154 | 34 | 4.53 |
| 1985-86 | Curtis Kimbrough | 163 | 31 | 5.26 |
| 1986-87 | Curtis Kimbrough | 156 | 33 | 4.73 |
| | Brent Peterson | 156 | 33 | 4.73 |
| 1987-88 | Dan Newman | 149 | 28 | 5.32 |
| 1988-89 | Jeff Richards | 160 | 30 | 5.33 |
| 1989-90 | Brian Martin | 247 | 34 | 8.10 |
| 1990-91 | Brian Martin | 340 | 30 | 11.30 |
| 1991-92 | Curt Scheidel | 231 | 35 | 6.60 |

VALUE POINT SYSTEM

The Value Point System measures a player's overall effectiveness. It is computed by adding the points scored, plus rebounds, plus twice the number of assists, plus twice the number of steals. That figure is divided by the number received from adding twice the number of missed field goals, plus foul shots missed, plus twice the number of turnovers, plus twice the number of fouls.

CAREER

| | | |
|------------------|---------|------|
| Brian Martin | 1989-91 | 1.92 |
| Paul Cozens | 1974-78 | 1.75 |
| Dave Wilson | 1987-92 | 1.68 |
| Eric Swanson | 1986-88 | 1.67 |
| Mark Vernon | 1975-77 | 1.63 |
| Randy Dunn | 1981-83 | 1.62 |
| Al Vasey | 1982-86 | 1.60 |
| Curtis Kimbrough | 1983-87 | 1.55 |
| Ed Fields | 1970-73 | 1.50 |
| Brent Peterson | 1985-88 | 1.48 |

SEASON

| | | |
|------------------|---------|------|
| Brian Martin | 1990-91 | 2.02 |
| Dave Wilson | 1991-92 | 1.95 |
| Paul Cozens | 1977-78 | 1.95 |
| Curtis Kimbrough | 1986-87 | 1.92 |
| Brian Martin | 1989-90 | 1.83 |
| Al Vasey | 1984-85 | 1.81 |
| Eric Swanson | 1987-88 | 1.78 |
| Mark Vernon | 1976-77 | 1.77 |
| Paul Cozens | 1976-77 | 1.76 |
| Al Vasey | 1983-84 | 1.76 |

HONORED BRUINS

| | | |
|---------------|--|------------------------------|
| Gordy Loewen | NAIA Dist. 2 All-Star | 1968-69; 69-70; 70-71 |
| David Morgan | NAIA Dist. 2 Honorable Mention | 1970-71 |
| Sammy Ibarra | NAIA Dist. 2 Second Team | 1972-73 |
| Craig Taylor | NAIA Dist. 2 Honorable Mention | 1972-73 |
| Rob Wunder | NAIA Dist. 2 Honorable Mention | 1972-73 |
| | NAIA Dist. 2 First Team | 1973-74 |
| | All-Northwest First Team | 1973-74 |
| | UPI West Coast Honorable Mention | 1973-74 |
| Ray Willis | NAIA Dist. 2 Honorable Mention | 1973-74; 74-75 |
| Bob Wright | NAIA Dist. 2 Honorable Mention | 1973-74 |
| Tim Hardie | NAIA Dist. 2 All-Star | 1976-77 |
| Paul Cozens | NAIA Dist. 2 First Team | 1974-75; 75-76; 76-77; 77-78 |
| | All-Northwest First Team | 1975-76; 77-78 |
| | All-Northwest Second Team | 1976-77 |
| | NAIA All-American Third Team | 1976-77 |
| | NAIA All-American Second Team | 1977-78 |
| | First GFC player to have jersey retired | 1977-78 |
| | UPI West Coast Honorable Mention | 1977-78 |
| | NBA Ninth Round Draft Choice (Portland Trail Blazers) | 1978 |
| Gary Chenault | NAIA Dist. 2 Second Team | 1978-79 |
| | All-Northwest Honorable Mention | 1978-79 |
| Jeff Loe | NAIA Dist. 2 Honorable Mention | 1979-80 |
| Hille van | NAIA Dist. 2 First Team | 1979-80 |
| der Kooy | NAIA Dist. 2 First Team | 1980-81 |
| Mike Royer | NAIA Dist. 2 Honorable Mention | 1981-82 |
| Randy Dunn | NAIA Dist. 2 First Team | 1981-82; 82-83; 83-84 |
| | All-Northwest First Team | 1983-84 |
| | All-Northwest Second Team | 1981-82; 82-83 |
| | NAIA All-American Honorable Mention | 1982-83; 83-84 |
| | NCCAA Region 7 Most Valuable | 1982-83; 83-84 |
| | NCCAA All-American | 1983-84 |
| | NAIA Dist. 2 Basketball Player of the Year | 1983-84 |
| | NAIA Dist. 2 Athlete of the Year | 1983-84 |
| | Second GFC player to have jersey retired | 1983-84 |
| | Tenth Round NBA Draft Choice (Portland Trail Blazers) | 1984 |
| Larry Jury | NAIA Dist. 2 First Team | 1984-85 |
| | NCCAA Region 8 First Team | 1984-85 |
| Curtis | NAIA Dist. 2 Honorable Mention | 1984-85; 85-86; 86-87 |
| Kimbrough | | |
| Toby Long | NAIA Dist. 2 Honorable Mention | 1985-86; 86-87 |
| | All-Northwest Honorable Mention | 1985-86; 86-87 |
| | NAIA National Academic All-American | 1986-87 |
| Kenny Stone | NAIA All-American Third Team | 1985-86; 86-87 |
| | NAIA Dist. 2 Basketball Player of the Year | 1985-86; 86-87 |
| | NAIA National Player of the Week | 1/19/87 |
| | NAIA Dist. 2 First Team | 1984-85 |
| | All-Northwest Top Player | 1985-86 |
| | All-Northwest First Team | 1986-87 |
| | All-Northwest Second Team | 1984-85 |

| | | |
|--------------|--|---------------------------|
| | NCCAA National All-American | 1984-85; 85-86; 86-87 |
| | NCCAA Region 8 Player of the Year | 1984-85; 85-86; 86-87 |
| | Seventh Round NBA Draft Choice (Portland Trail Blazers) | 1986-87 |
| Dan Newman | NAIA Dist. 2 First Team | 1981-82; 86-87; 87-88 |
| | All Northwest Third Team | 1986-87; 87-88 |
| | NCCAA Region 8 First Team | 1986-87; 87-88 |
| Eric Swanson | NAIA Dist. 2 First Team | 1987-88 |
| | NCCAA Region 8 First Team | 1987-88 |
| | All-Northwest Honorable Mention | 1987-88 |
| Pat Casey | NAIA Dist. 2 First Team | 1988-89 |
| Brian Martin | NAIA Dist. 2 Scholar-Athlete | 1991-92 |
| Jeff Hoffman | NAIA National Honorable Mention | 1990-91 |
| | NAIA Dist. 2 First Team | 1990-91; 1991-92 |
| | All-Northwest First Team | 1990-91; 1991-92 |
| | NAIA Division II National Honorable Mention | 1991-92 |
| Dave Wilson | NAIA Dist. 2 Most Valuable Player | 1989-90; 1991-92 |
| | NAIA Dist. 2 First Team | 1989-90; 1990-91; 1991-92 |
| | NAIA National Honorable Mention | 1989-90; 1990-91 |
| | NAIA Division II First Team All-American | 1991-92 |
| | NAIA Division II National All-Tournament Team | 1991-92 |
| | NAIA Division II National Player-of-the-Week | 1/13/92 |
| | All-Northwest First Team | 1989-90; 1990-91; 1991-92 |
| | All-Northwest Most Valuable Player | 1989-90; 1991-92 |

MOST VALUABLE PLAYERS

| | | | |
|---------|--------------------|---------|--------------------|
| 1968-69 | Gordy Loewen | 1980-81 | Hille van der Kooy |
| 1969-70 | Gordy Loewen | 1981-82 | Randy Dunn |
| 1970-71 | Gordy Loewen | 1982-83 | Randy Dunn |
| 1971-72 | Gary Berg | 1983-84 | Randy Dunn |
| 1972-73 | Rob Wunder | 1984-85 | Kenny Stone |
| 1973-74 | Rob Wunder | 1985-86 | Kenny Stone |
| 1974-75 | Ray Willis | 1986-87 | Kenny Stone |
| 1975-76 | Paul Cozens | 1987-88 | Eric Swanson |
| 1976-77 | Paul Cozens | | Dan Newman |
| 1977-78 | Paul Cozens | 1988-89 | Pat Casey |
| 1978-79 | Gary Chenault | | Jeff Richards |
| 1979-80 | Hille van der Kooy | 1989-90 | Dave Wilson |
| | Jeff Loe | 1990-91 | Jeff Hoffman |
| | | 1991-92 | Dave Wilson |

COACHES' RECORDS

| Season | Coach | Win / Loss | Percentage |
|---------|---------------|------------|------------|
| 1965-66 | Terry Haskell | 9-19 | .321 |
| 1966-67 | Terry Haskell | 7-18 | .240 |
| 1967-68 | Terry Haskell | 6-20 | .231 |
| 1968-69 | Dave Berg | 4-22 | .154 |
| 1969-70 | Dave Berg | 3-23 | .115 |
| 1970-71 | Lorin Miller | 15-13 | .533 |
| 1971-72 | Lorin Miller | 13-12 | .520 |
| 1972-73 | Lorin Miller | 16-15 | .516 |
| 1973-74 | Lorin Miller | 19-11 | .633 |
| 1974-75 | Lorin Miller | 17-13 | .567 |
| 1975-76 | Lorin Miller | 19-8 | .704 |
| 1976-77 | Sam Willard | 20-9 | .690 |
| 1977-78 | Sam Willard | 15-14 | .517 |
| 1978-79 | Sam Willard | 9-20 | .310 |
| 1979-80 | Sam Willard | 18-12 | .600 |
| 1980-81 | Sam Willard | 15-13 | .536 |
| 1981-82 | Sam Willard | 12-21 | .364 |
| 1982-83 | Mark Vernon | 15-16 | .484 |
| 1983-84 | Mark Vernon | 17-12 | .586 |
| 1984-85 | Mark Vernon | 27-7 | .794 |
| 1985-86 | Mark Vernon | 21-10 | .677 |
| 1986-87 | Mark Vernon | 27-6 | .818 |
| 1987-88 | Mark Vernon | 17-16 | .515 |
| 1988-89 | Mark Vernon | 19-12 | .613 |
| 1989-90 | Mark Vernon | 29-5 | .853 |
| 1990-91 | Mark Vernon | 24-6 | .800 |
| 1991-92 | Mark Vernon | 24-11 | .686 |
| | | 438-364 | .546 |

CAREER RECORDS

| Coach | Seasons | Years | Win / Loss | Percentage |
|---------------|---------|---------|------------|------------|
| Terry Haskell | 3 | 1965-68 | 22-57 | .278 |
| Dave Berg | 2 | 1968-70 | 7-45 | .129 |
| Lorin Miller | 6 | 1970-76 | 99-72 | .579 |
| Sam Willard | 6 | 1976-82 | 89-89 | .500 |
| Mark Vernon | 10 | 1982-92 | 220-101 | .685 |



Lorin Miller (top left)
Sam Willard (top right)
Mark Vernon (right)



BRUIN SEASON SCORES

• = Away Game

GFC Opponent

1965-66

| | | |
|----|-------------------------|-----|
| 59 | Lewis and Clark • | 100 |
| 88 | Eastern Oregon • | 103 |
| 55 | Oregon College of Ed. • | 67 |
| 84 | Alaska Methodist • | 87 |
| 82 | Alaska Methodist • | 78 |
| 55 | Alaska - Fairbanks • | 73 |
| 58 | Alaska - Fairbanks • | 68 |
| 60 | Alaska - Fairbanks • | 87 |
| 65 | Oregon Tech | 69 |
| 69 | Oregon Tech | 90 |
| 79 | Warner Pacific • | 68 |
| 93 | Warner Pacific | 67 |
| 76 | Oregon College of Ed. | 84 |
| 66 | Southern Oregon • | 89 |
| 62 | Southern Oregon • | 75 |
| 87 | Oregon College of Ed • | 101 |
| 63 | Eastern Oregon | 68 |
| 51 | Eastern Oregon | 60 |
| 77 | Oregon Tech • | 69 |
| 57 | Oregon Tech • | 50 |
| 49 | Cascade | 66 |
| 53 | Cascade • | 79 |
| 62 | Oregon College of Ed. | 66 |
| 72 | Southern Oregon | 67 |
| 56 | Southern Oregon | 55 |
| 63 | Oregon College of Ed. • | 79 |
| 59 | Eastern Oregon • | 97 |
| 75 | Eastern Oregon • | 79 |

H: 3-7 •A: 6-12

SEASON: 9-19

*Won by forfeit

1966-67

| | | |
|-----|-------------------------|-----|
| 64 | Pacific University • | 65 |
| 63 | Southern Oregon • | 68 |
| 58 | Oregon College of Ed. • | 85 |
| 91 | Alaska Methodist | 68 |
| 98 | Alaska Methodist | 75 |
| 76 | Oregon Tech • | 88 |
| 74 | Oregon Tech • | 81 |
| 79 | Warner Pacific | 68 |
| 91 | Warner Pacific • | 88 |
| 70 | Oregon College of Ed • | 109 |
| 86 | Southern Oregon | 90 |
| 70 | Southern Oregon | 68 |
| 50 | Oregon College of Ed. | 70 |
| 73 | Eastern Oregon • | 96 |
| 69 | Eastern Oregon • | 89 |
| 47 | Oregon Tech | 82 |
| 74 | Oregon Tech | 61 |
| 67 | Cascade • | 66 |
| 69 | Cascade | 75 |
| 75 | Oregon College of Ed • | 107 |
| 63 | Southern Oregon • | 94 |
| 81 | Southern Oregon • | 113 |
| 64 | Oregon College of Ed. | 79 |
| 92 | Eastern Oregon | 112 |
| 100 | Eastern Oregon | 112 |

H: 5-7 •A: 2-11

SEASON: 7-18

1967-68

| | | |
|-----|-------------------------|-----|
| 73 | Willamette University • | 123 |
| 60 | Lewis and Clark • | 90 |
| 83 | Eastern Oregon • | 90 |
| 106 | Alaska Methodist | 75 |
| 76 | Pacific University • | 104 |
| 59 | Pacific University | 83 |
| 63 | Oregon Tech | 85 |
| 72 | Oregon Tech | 68 |
| 68 | Oregon College of Ed. | 73 |
| 84 | Mt. Angel • | 59 |

GFC Opponent

| | | |
|----|------------------------|-----|
| 74 | Mt. Angel | 54 |
| 67 | Southern Oregon • | 102 |
| 66 | Southern Oregon • | 106 |
| 74 | Oregon College of Ed • | 82 |
| 69 | Eastern Oregon • | 72 |
| 73 | Eastern Oregon • | 96 |
| 65 | Oregon Tech • | 80 |
| 80 | Oregon Tech • | 55 |
| 73 | Oregon College of Ed. | 93 |
| 76 | Cascade | 67 |
| 71 | Cascade • | 73 |
| 64 | Southern Oregon | 87 |
| 88 | Southern Oregon | 92 |
| 74 | Oregon College of Ed • | 104 |
| 66 | Eastern Oregon | 82 |
| 68 | Eastern Oregon | 80 |

H: 4-8 •A: 2-12

SEASON: 6-20

1968-69

| | | |
|----|------------------------|-----|
| 61 | Pacific University • | 84 |
| 72 | Oregon College of Ed • | 101 |
| 55 | Oregon Tech • | 82 |
| 62 | Pacific University | 56 |
| 59 | Pacific University • | 82 |
| 61 | Alaska Methodist • | 76 |
| 85 | Alaska Methodist • | 88 |
| 83 | Alaska Methodist • | 73 |
| 91 | Oregon Tech • | 86 |
| 94 | Oregon Tech • | 104 |
| 72 | Oregon College of Ed • | 118 |
| 54 | Northwest Nazarene • | 82 |
| 69 | Northwest Nazarene • | 77 |
| 83 | Southern Oregon • | 111 |
| 97 | Southern Oregon • | 101 |
| 63 | Eastern Oregon • | 88 |
| 89 | Eastern Oregon • | 84 |
| 72 | Oregon College of Ed. | 76 |
| 72 | Oregon Tech | 101 |
| 66 | Oregon Tech | 88 |
| 80 | Oregon College of Ed • | 100 |
| 55 | Southern Oregon | 57 |
| 64 | Southern Oregon | 94 |
| 71 | Oregon College of Ed. | 79 |
| 69 | Eastern Oregon | 83 |
| 78 | Eastern Oregon | 92 |

H: 1-8 •A: 3-14

SEASON: 4-22

1969-70

| | | |
|----|-------------------------|-----|
| 53 | Willamette University • | 72 |
| 83 | Oregon Tech • | 89 |
| 74 | College of Idaho • | 100 |
| 85 | Alaska Methodist | 95 |
| 92 | Warner Pacific • | 90 |
| 69 | Pacific University | 72 |
| 95 | Oregon Tech | 84 |
| 65 | Oregon Tech | 95 |
| 90 | Oregon College of Ed • | 104 |
| 50 | Lewis and Clark • | 112 |
| 68 | Southern Oregon • | 86 |
| 52 | Southern Oregon • | 68 |
| 52 | Oregon College of Ed. | 66 |
| 80 | Eastern Oregon | 98 |
| 57 | Eastern Oregon | 89 |
| 71 | Oregon College of Ed. • | 87 |
| 75 | Oregon Tech • | 86 |
| 60 | Oregon Tech • | 95 |
| 81 | Pacific University • | 91 |
| 66 | Northwest Nazarene | 88 |
| 58 | Northwest Nazarene | 72 |
| 83 | Oregon College of Ed. | 119 |
| 67 | Southern Oregon | 94 |

| GFC | Opponent |
|---------------------|----------|
| 71 Southern Oregon | 90 |
| 76 Eastern Oregon • | 98 |
| 81 Eastern Oregon • | 75 |
| H: 1-11 •A: 2-12 | |
| SEASON: 3-23 | |

1970-71

| | |
|----------------------------|-----|
| 68 Lewis and Clark • | 83 |
| 60 Willamette University • | 85 |
| 66 Eastern Oregon • | 64 |
| 69 Pacific University • | 83 |
| 81 Montana Tech | 59 |
| 76 LaVerne | 74 |
| 59 Fresno Pacific • | 65 |
| 65 Fresno Pacific • | 84 |
| 82 Alaska Methodist | 74 |
| 72 Alaska Methodist • | 63 |
| 94 Alaska Methodist • | 67 |
| 95 Lewis and Clark | 85 |
| 82 Victoria | 60 |
| 73 Victoria | 67 |
| 80 Western Baptist • | 100 |
| 102 Oregon Tech | 67 |
| 91 Oregon Tech | 71 |
| 94 Oregon College of Ed. | 72 |
| 63 Claremont | 67 |
| 66 Northwest Nazarene • | 81 |
| 78 Warner Pacific • | 67 |
| 71 Warner Pacific | 77 |
| 82 Northwest | 44 |
| 81 Western Baptist | 71 |
| 65 Oregon College of Ed. • | 83 |
| 76 Northwest Nazarene | 82 |
| 65 Northwest Nazarene | 78 |
| NAIA District 2 Playoffs: | |
| 69 Willamette University • | 103 |
| H: 10-4 •A: 5-9 | |
| SEASON: 15-13 | |

1971-72

| | |
|----------------------------|-----|
| 74 Whitman • | 70 |
| 88 Whitman • | 85 |
| 78 Western Baptist | 58 |
| 93 Alaska Methodist | 84 |
| 86 Alaska Methodist | 60 |
| 70 Eastern Oregon | 75 |
| 75 Azusa Pacific | 81 |
| 53 Simon Fraser • | 60 |
| 70 Alaska Methodist • | 69 |
| 84 Linfield | 80 |
| 87 Linfield • | 110 |
| 77 Western Montana | 84 |
| 77 Western Montana | 98 |
| 83 Oregon Tech • | 114 |
| 87 Southern Oregon • | 92 |
| 80 Lewis-Clark St. | 72 |
| 82 Warner Pacific • | 77 |
| 91 Eastern Oregon • | 83 |
| 66 Lewis-Clark St. • | 76 |
| 76 Northwest Nazarene • | 95 |
| 92 Western Baptist • | 61 |
| 63 Warner Pacific | 70 |
| 88 Great Falls | 80 |
| 72 Northwest Nazarene | 61 |
| NAIA District 2 Playoffs: | |
| 60 Willamette University • | 69 |
| H: 7-5 •A: 6-7 | |
| SEASON: 13-12 | |

1972-73

| | |
|----------------------------|----|
| 74 Linfield • | 73 |
| 79 Lewis and Clark • | 73 |
| 74 Willamette University • | 77 |
| 84 Pacific University | 94 |
| 86 Pacific University • | 91 |
| 55 Willamette University | 54 |
| 45 Willamette University • | 68 |

| GFC | Opponent |
|---------------------------|----------|
| 82 Eastern Oregon | 71 |
| 68 Linfield | 76 |
| 66 Linfield • | 77 |
| 60 Whitman | 64 |
| 80 Whitman | 60 |
| 77 Pasadena • | 85 |
| 67 Southern California • | 68 |
| 81 Macalester • | 90 |
| 60 Victoria • | 62 |
| 65 Victoria • | 54 |
| 51 Western Baptist | 43 |
| 63 Oregon Tech | 61 |
| 65 Southern Oregon | 68 |
| 74 Eastern Oregon • | 96 |
| 72 Lewis-Clark St. | 52 |
| 78 Western Baptist • | 63 |
| 84 Northwest Nazarene | 72 |
| 67 Warner Pacific • | 58 |
| 62 Lewis-Clark St. • | 57 |
| 60 Northwest Nazarene • | 73 |
| 74 Warner Pacific | 63 |
| NAIA District 2 Playoffs: | |
| 95 Linfield • | 88 |
| 68 Pacific University • | 67 |
| NAIA Nationals: | |
| 62 Defiance, Ohio • | 82 |
| H: 8-4 •A: 8-11 | |
| SEASON: 16-15 | |

1973-74

| | |
|----------------------------|----|
| 49 Willamette University • | 43 |
| 63 Lewis and Clark • | 80 |
| 55 Pacific University • | 57 |
| 88 Columbia Christian • | 58 |
| 81 Willamette University | 59 |
| 63 Willamette University • | 64 |
| 88 Linfield • | 86 |
| 67 Pacific University • | 69 |
| 71 Eastern Oregon | 64 |
| 72 Southern Oregon | 53 |
| 91 Linfield | 94 |
| 81 Pacific University | 57 |
| 65 Puget Sound • | 81 |
| 109 Columbia Christian | 45 |
| 67 Warner Pacific • | 72 |
| 66 Southern Oregon • | 69 |
| 78 Oregon Tech • | 90 |
| 88 Lewis-Clark St. | 81 |
| 73 Northwest Nazarene • | 63 |
| 95 Eastern Oregon • | 94 |
| 72 Alaska - Fairbanks | 69 |
| 91 Western Baptist • | 67 |
| 70 Lewis-Clark St. • | 67 |
| 63 Whitworth • | 62 |
| 107 Warner Pacific | 71 |
| 66 Whitworth | 68 |
| 90 Northwest Nazarene | 74 |
| 84 Western Baptist | 71 |
| NAIA District 2 Playoffs: | |
| 92 Pacific University • | 72 |
| 54 Oregon Tech • | 55 |
| H: 10-2 •A: 9-9 | |
| SEASON: 19-11 | |

1974-75

| | |
|----------------------------|----|
| 95 Linfield • | 65 |
| 71 Oregon College of Ed. • | 74 |
| 70 Lewis and Clark • | 75 |
| 92 Linfield • | 79 |
| 106 Eastern Oregon | 76 |
| 95 Willamette University | 68 |
| 63 Whitworth | 62 |
| 91 Linfield | 63 |
| 89 Pacific University | 70 |
| 93 Western Baptist | 57 |
| 64 Pacific University • | 69 |
| 48 Oregon Tech | 67 |

| GFC | Opponent |
|----------------------------|----------|
| 74 Puget Sound • | 86 |
| 90 Southern Oregon • | 70 |
| 82 Willamette University • | 92 |
| 86 Lewis-Clark St. • | 74 |
| 84 Warner Pacific • | 77 |
| 75 Alaska - Fairbanks • | 83 |
| 78 Alaska - Fairbanks • | 82 |
| 87 Eastern Oregon • | 75 |
| 72 Northwest Nazarene • | 76 |
| 72 Redlands • | 62 |
| 73 Lewis-Clark St. • | 84 |
| 59 Whitworth • | 64 |
| 96 Northwest Nazarene • | 70 |
| 72 Oregon Tech • | 74 |
| 90 Southern Oregon • | 84 |
| 98 Warner Pacific • | 76 |
| 86 Western Baptist • | 55 |
| NAIA District 2 Playoffs: | |
| 56 Oregon Tech • | 72 |
| H: 11-1 •A: 6-12 | |
| SEASON: 17-13 | |

1975-76

| | |
|--------------------------|-----|
| 62 Pacific University • | 68 |
| 82 Southern Oregon • | 69 |
| 87 Warner Pacific • | 80 |
| 89 Eastern Oregon • | 59 |
| 72 Western Washington • | 60 |
| 94 Pacific University • | 74 |
| 78 Eastern Oregon • | 65 |
| 71 Pacific University • | 84 |
| 91 Western Baptist • | 79 |
| 123 Linfield • | 116 |
| 87 Linfield • | 89 |
| 102 Pacific University • | 85 |
| 72 Whitman • | 67 |
| 76 Alaska - Anchorage • | 67 |
| 75 Western Baptist • | 59 |
| 87 Lewis-Clark St. • | 101 |
| 95 Simon Fraser • | 77 |
| 81 College of Idaho • | 68 |
| 61 Warner Pacific • | 59 |
| 92 Alaska - Fairbanks • | 74 |
| 82 Simon Fraser • | 89 |
| 97 Lewis-Clark St. • | 69 |
| 86 Northwest Nazarene • | 71 |
| 65 College of Idaho • | 63 |
| 62 Northwest Nazarene • | 64 |
| 82 Warner Pacific • | 86 |
| 88 Whitman • | 100 |
| H: 11-1 •A: 8-7 | |
| SEASON: 19-8 | |

1976-77

| | |
|----------------------------|-----|
| 75 Lewis and Clark • | 86 |
| 86 Oregon College of Ed. • | 80 |
| 101 Linfield • | 90 |
| 91 Linfield • | 84 |
| 88 Eastern Oregon • | 71 |
| 88 Pacific University • | 77 |
| 106 Pacific University • | 94 |
| 90 Western Baptist • | 73 |
| 93 Linfield • | 80 |
| 89 Willamette University • | 75 |
| 100 Whitman • | 95 |
| 78 Eastern Oregon • | 62 |
| 72 St. Martin's • | 81 |
| 91 Northwest Nazarene • | 87 |
| 80 College of Idaho • | 78 |
| 87 Willamette University • | 90 |
| 73 Alaska - Anchorage • | 75 |
| 87 Alaska - Anchorage • | 85 |
| 81 Warner Pacific • | 59 |
| 91 Western Baptist • | 70 |
| 95 Lewis-Clark St. • | 79 |
| 92 Willamette University • | 94 |
| 76 Warner Pacific • | 62 |
| 77 Lewis-Clark St. • | 101 |

| GFC | Opponent |
|---------------------------|----------|
| 97 Whitman • | 92 |
| 68 Puget Sound • | 89 |
| 99 Northwest Nazarene • | 85 |
| 65 St. Martin's • | 76 |
| NAIA District 2 Playoffs: | |
| 79 Hawaii - Hilo • | 85 |
| H: 8-2 •A: 12-7 | |
| SEASON: 20-9 | |

1977-78

| | |
|----------------------------|-----|
| 103 Pacific University • | 88 |
| 95 Linfield • | 93 |
| 81 Hawaii-Hilo • | 87 |
| 79 Pacific University • | 85 |
| 87 Linfield • | 99 |
| 82 Willamette University • | 72 |
| 104 Eastern Oregon • | 74 |
| 88 Eastern Oregon • | 92 |
| 74 Seattle Pacific • | 79 |
| 83 Western Baptist • | 80 |
| 100 Linfield • | 107 |
| 75 St. Martin's • | 82 |
| 74 Oregon College of Ed. • | 77 |
| 87 Western Baptist • | 82 |
| 81 Portland State • | 124 |
| 80 Seattle Pacific • | 75 |
| 106 Pacific University • | 98 |
| 87 Warner Pacific • | 69 |
| 67 Puget Sound • | 91 |
| 72 Alaska - Fairbanks • | 66 |
| 83 Western Baptist • | 75 |
| 69 Warner Pacific • | 64 |
| 84 Willamette University • | 78 |
| 67 Northwest Nazarene • | 70 |
| 86 College of Idaho • | 82 |
| 86 Oregon College of Ed. • | 74 |
| 76 St. Martin's • | 91 |
| 87 Northwest Nazarene • | 85 |
| NAIA District 2 Playoffs: | |
| 65 Oregon Tech • | 79 |
| H: 9-4 •A: 6-10 | |
| SEASON: 15-14 | |

*Forfeited due to ineligible player

1978-79

| | |
|----------------------------|-----|
| 82 Southern Oregon • | 98 |
| 68 Warner Pacific • | 73 |
| 83 Pacific University • | 85 |
| 84 Linfield • | 107 |
| 90 Linfield • | 78 |
| 61 Willamette University • | 60 |
| 74 College of Idaho • | 59 |
| 59 Central Washington • | 82 |
| 64 Lewis and Clark • | 65 |
| 76 Hawaii Pacific • | 82 |
| 74 Hawaii Pacific • | 96 |
| 55 BYU - Hawaii • | 54 |
| 51 BYU - Hawaii • | 65 |
| 59 Eastern Oregon • | 76 |
| 51 Northwest Nazarene • | 69 |
| 73 Pacific University • | 82 |
| 74 Warner Pacific • | 72 |
| 69 Willamette University • | 73 |
| 60 Western Baptist • | 73 |
| 98 Eastern Oregon • | 97 |
| 80 Lewis and Clark • | 88 |
| 104 BYU - Hawaii • | 87 |
| 98 Western Baptist • | 109 |
| 87 Pacific University • | 100 |
| 61 Seattle Pacific • | 80 |
| 88 Northwest Nazarene • | 77 |
| 70 Warner Pacific • | 86 |
| 94 Hawaii Pacific • | 91 |
| 74 Seattle Pacific • | 82 |
| H: 7-6 •A: 2-14 | |
| SEASON: 9-20 | |

GFC Opponent

1979-80

| | | |
|-----|-----------------------|-----|
| 61 | Western Baptist | 76 |
| 94 | Southern Oregon | 80 |
| 74 | Oregon College of Ed. | 76 |
| 94 | Whitman College | 83 |
| 72 | Willamette University | 71 |
| 65 | Seattle Pacific | 73 |
| 88 | Linfield | 91 |
| 84 | Linfield | 97 |
| 61 | Lewis and Clark | 65 |
| 94 | Concordia | 84 |
| 99 | Warner Pacific | 91 |
| 92 | Whitman | 89 |
| 68 | Central Washington | 77 |
| 73 | Willamette University | 66 |
| 90 | College of Idaho | 83 |
| 73 | Oregon College of Ed. | 74 |
| 81 | Western Baptist | 73 |
| 92 | Pacific University | 76 |
| 83 | Eastern Oregon | 67 |
| 104 | Warner Pacific | 88 |
| 55 | Western Baptist | 38 |
| 74 | Seattle Pacific | 96 |
| 70 | Lewis and Clark | 68 |
| 75 | Northwest Nazarene | 105 |
| 63 | College of Idaho | 68 |
| 82 | Eastern Oregon | 73 |
| 84 | Northwest Nazarene | 77 |
| 108 | Pacific University | 80 |
| 91 | Warner Pacific | 86 |

NAIA District 2 Playoffs:

| | | |
|----|---------------------|----|
| 67 | Oregon Inst of Tech | 69 |
|----|---------------------|----|

H: 10-4 •A: 8-8

SEASON: 18-12

1980-81

| | | |
|-----|----------------------------|----|
| 77 | Pacific University | 72 |
| 88 | Eastern Oregon State | 99 |
| 73 | Lewis and Clark | 70 |
| 65 | Pacific University | 73 |
| 83 | Seattle Pacific University | 86 |
| 74 | Linfield College | 83 |
| 79 | Concordia College | 77 |
| 67 | Point Loma | 82 |
| 64 | Oregon College of Ed. | 99 |
| 63 | Lewis and Clark | 58 |
| 87 | Linfield College | 74 |
| 61 | Willamette University | 59 |
| 62 | Oregon College of Ed. | 80 |
| 82 | Western Baptist | 76 |
| 83 | Warner Pacific | 79 |
| 105 | Pacific University | 89 |
| 64 | Concordia College | 79 |
| 68 | Willamette University | 83 |
| 70 | Lewis and Clark | 67 |
| 100 | Concordia College | 82 |
| 33 | Eastern Oregon State | 30 |
| 61 | Northwest Nazarene | 60 |
| 46 | Northwest Nazarene | 50 |
| 57 | College of Idaho | 84 |
| 68 | Eastern Oregon State | 76 |
| 38 | Western Baptist | 37 |
| 89 | Warner Pacific | 80 |

NAIA District 2 Playoffs:

| | | |
|----|--------------------|----|
| 58 | Northwest Nazarene | 61 |
|----|--------------------|----|

H: 12-4 •A: 3-9

SEASON: 15-13

1981-82

| | | |
|----|------------------------|-----|
| 62 | Willamette University | 67 |
| 80 | Columbia Christian | 79 |
| 66 | Concordia | 84 |
| 56 | Judson Baptist | 55 |
| 86 | Linfield | 102 |
| 71 | College of Great Falls | 101 |
| 77 | Pacific University | 68 |
| 95 | Seattle University | 83 |

GFC Opponent

| | | |
|-----|-----------------------|-----|
| 73 | Western Washington | 83 |
| 66 | Fresno Pacific | 72 |
| 64 | Western Baptist | 73 |
| 51 | Lewis and Clark | 79 |
| 78 | Linfield | 75 |
| 69 | Western Oregon | 79 |
| 76 | College of Idaho | 82 |
| 77 | Northwest Nazarene | 92 |
| 86 | Eastern Oregon | 96 |
| 70 | Willamette University | 56 |
| 76 | Warner Pacific | 91 |
| 80 | Western Oregon | 111 |
| 74 | Judson Baptist | 82 |
| 91 | Columbia Christian | 73 |
| 85 | Eastern Oregon | 102 |
| 74 | Concordia | 85 |
| 88 | Seattle University | 73 |
| 76 | Judson Baptist | 70 |
| 88 | Western Baptist | 97 |
| 75 | Warner Pacific | 96 |
| 76 | Western Baptist | 79 |
| 101 | College of Idaho | 83 |
| 63 | Northwest Nazarene | 59 |

NCCAA Regional Playoffs:

| | | |
|----|--------------------|----|
| 54 | Judson Baptist | 61 |
| 85 | Columbia Christian | 79 |

H: 8-11 •A: 4-10

SEASON: 12-21

1982-83

| | | |
|----|-----------------------|-----|
| 62 | Seattle Pacific | 94 |
| 86 | Warner Pacific | 104 |
| 61 | Willamette University | 67 |
| 65 | Columbia Christian | 60 |
| 63 | Warner Pacific | 67 |
| 73 | Lewis and Clark | 78 |
| 64 | Pacific University | 54 |
| 61 | Linfield | 60 |
| 68 | Pacific University | 38 |
| 68 | Western Oregon | 76 |
| 60 | Lewis and Clark | 59 |
| 66 | Concordia | 55 |
| 92 | Eastern Oregon | 46 |
| 66 | Western Baptist | 65 |
| 80 | Hawaii - Hilo | 92 |
| 78 | Linfield | 66 |
| 83 | Judson Baptist | 60 |
| 58 | Warner Pacific | 86 |
| 59 | Eastern Oregon | 66 |
| 73 | College of Idaho | 82 |
| 71 | Western Baptist | 60 |
| 74 | Western Oregon | 80 |
| 89 | Pacific University | 78 |
| 68 | Willamette University | 81 |
| 80 | Concordia | 71 |
| 71 | Warner Pacific | 72 |
| 71 | Seattle Pacific | 83 |
| 64 | Northwest Nazarene | 67 |
| 85 | Judson Baptist | 71 |

NCCAA Regional Playoffs:

| | | |
|----|-----------------|----|
| 46 | Western Baptist | 35 |
| 69 | Warner Pacific | 75 |

H: 9-9 •A: 6-7

SEASON: 15-16

1983-84

| | | |
|-----|-----------------------|-----|
| 93 | Judson Baptist | 78 |
| 74 | Western Oregon | 72 |
| 90 | Warner Pacific | 100 |
| 82 | Linfield | 68 |
| 77 | Western Baptist | 67 |
| 72 | Willamette University | 82 |
| 78 | Eastern Oregon | 67 |
| 64 | Lewis and Clark | 66 |
| 72 | Lewis and Clark | 58 |
| 103 | Linfield | 90 |
| 77 | Concordia | 76 |

| GFC | Opponent |
|-----------------------------|----------|
| 85 Willamette University .. | 74 |
| 58 Western Oregon • | 80 |
| 77 Columbia Christian • .. | 63 |
| 70 Western Baptist • | 71 |
| 78 Northwest Nazarene ... | 67 |
| 79 Warner Pacific | 72 |
| 90 Multnomah | 66 |
| 65 Western Oregon | 75 |
| 81 Columbia Christian | 78 |
| 80 Concordia | 89 |
| 98 Judson Baptist • | 66 |
| 76 College of Idaho • | 85 |
| 103 Northwest Nazarene • | 113 |
| 67 Western Baptist | 54 |
| 95 Northwest Christian ... | 81 |
| 42 Warner Pacific • | 43 |
| NAIA District 2 Playoffs: | |
| 72 Western Oregon • | 86 |
| NCCAA Regional Playoffs: | |
| 92 Concordia • | 101 |
| H: 10-3 •A: 7-9 | |
| SEASON: 17-12 | |

1984-85

| | |
|------------------------------|-----|
| 90 Columbia Christian • .. | 74 |
| 72 Western Oregon State • | 79 |
| 71 Willamette University • | 52 |
| 91 Linfield College | 61 |
| 88 Pacific University | 52 |
| 78 Western Oregon State .. | 64 |
| 77 Oregon Tech • | 95 |
| 107 U of Cal - San Diego • | 93 |
| 80 Linfield • | 76 |
| 82 Willamette University .. | 80 |
| 73 Pacific University • | 56 |
| 55 Western Baptist • | 68 |
| 88 Columbia Christian • .. | 80 |
| 84 Concordia • | 77 |
| 70 Northwest Nazarene ... | 64 |
| 80 Warner Pacific • | 78 |
| 74 Lewis and Clark | 61 |
| 82 Eastern Oregon State .. | 61 |
| 73 Western Oregon State • | 70 |
| 52 Western Baptist | 50 |
| 91 Warner Pacific | 80 |
| 88 Concordia | 70 |
| 74 College of Idaho • | 94 |
| 97 Northwest Nazarene • | 106 |
| 105 Eastern Oregon State • | 77 |
| 93 Columbia Christian | 82 |
| NAIA District 2 Playoffs: | |
| 50 Western Baptist | 47 |
| 71 Western Oregon State .. | 57 |
| 53 College of Idaho • | 61 |
| NCCAA Regional Playoffs: | |
| 74 Columbia Christian | 67 |
| 52 Western Baptist | 50 |
| NCCAA Nationals: | |
| 97 Olivet Nazarene • | 77 |
| 86 Point Loma College • .. | 95 |
| 70 Taylor University • | 55 |
| H: 15-0 •A: 12-7 | |
| SEASON: 27-7 | |

1985-86

| | |
|------------------------------|----|
| 80 Central Washington • .. | 82 |
| 78 Whitworth • | 74 |
| 76 Univ. Puget Sound • .. | 93 |
| 71 Willamette • | 57 |
| 93 Pacific | 63 |
| 87 Western Oregon | 76 |
| 73 Western Baptist • | 75 |
| 113 Concordia • | 69 |
| 68 Linfield • | 81 |
| 88 Pacific University • | 78 |
| 75 Central Washington • .. | 79 |

| GFC | Opponent |
|----------------------------|----------|
| 88 Pacific Lutheran • | 71 |
| 76 St. Martin's • | 69 |
| 83 Western Oregon • | 74 |
| 97 Columbia Christian • .. | 53 |
| 83 Northwest Nazarene ... | 77 |
| 76 College of Idaho | 68 |
| 95 Eastern Oregon • | 59 |
| 107 Concordia | 70 |
| 78 College of Idaho • | 90 |
| 73 Northwest Nazarene • .. | 78 |
| 97 Eastern Oregon | 61 |
| 75 Linfield | 80 |
| 83 Columbia Christian | 66 |
| 106 Western Oregon | 90 |
| 101 Concordia • | 91 |
| 73 Warner Pacific | 65 |
| NAIA District 2 Playoffs: | |
| 66 Warner Pacific • | 56 |
| 67 Oregon Inst. of Tech. • | 76 |
| NCCAA Regional Playoffs: | |
| 102 Warner Pacific | 85 |
| 61 Western Baptist • | 65 |
| H: 10-1 •A: 11-9 | |
| SEASON: 21-10 | |

1986-87

| | |
|-----------------------------|-----|
| 77 Western Baptist • | 72 |
| 83 Willamette | 60 |
| 114 Linfield • | 72 |
| 82 Pacific • | 61 |
| 75 Linfield • | 78 |
| 97 Warner Pacific | 87 |
| 59 Humboldt State • | 70 |
| 85 Cal Poly - San Luis | |
| Obispo • | 79 |
| 96 California Lutheran • .. | 79 |
| 104 St. Martin's | 73 |
| 97 Columbia Christian | 68 |
| 104 Western Oregon | 88 |
| 95 Warner Pacific • | 85 |
| 121 College of Idaho | 89 |
| 117 Northwest Nazarene .. | 86 |
| 120 Linfield | 76 |
| 143 Northwest | 56 |
| 109 Eastern Oregon State .. | 80 |
| 115 Concordia • | 77 |
| 114 Northwest • | 55 |
| 62 Western Baptist | 52 |
| 87 Northwest Nazarene • .. | 75 |
| 93 College of Idaho • ... | 107 |
| 96 Eastern Oregon • | 77 |
| 122 Concordia | 82 |
| 93 Western Oregon • ... | 100 |
| 95 Columbia Christian • .. | 81 |
| NAIA District 2 Playoffs: | |
| 101 Warner Pacific | 75 |
| 75 College of Idaho | 58 |
| 69 Oregon Tech • | 75 |
| NCCAA Regional Playoffs: | |
| 121 Concordia | 78 |
| 77 Western Baptist | 74 |
| NCCAA National Playoffs: | |
| 73 Covenant • | 75 |
| H: 16-0 •A: 11-6 | |
| SEASON: 27-6 | |

1987-88

| | |
|--------------------------|-----|
| 90 Linfield • | 97 |
| 99 Western Oregon • ... | 105 |
| 93 Willamette | 86 |
| 74 Southern Oregon • ... | 87 |
| 88 Lewis & Clark • | 77 |
| 102 Lewis & Clark | 84 |
| 71 Willamette • | 76 |
| 81 Western Oregon • | 86 |
| 109 Western Oregon | 95 |

| GFC | Opponent |
|---------------------------|----------|
| 61 Biola • | 78 |
| 68 Westmont • | 78 |
| 128 Dominican • | 48 |
| 68 Linfield | 76 |
| 93 Columbia Christian | 78 |
| 88 Warner Pacific | 91 |
| 66 College of Idaho • | 87 |
| 83 Northwest Nazarene • | 73 |
| 96 Concordia | 68 |
| 136 Northwest College • | 83 |
| 73 Seattle Pacific • | 75 |
| 86 Western Baptist • | 82 |
| 78 Northwest Nazarene | 87 |
| 87 College of Idaho | 72 |
| 114 Concordia • | 65 |
| 89 Lewis & Clark • | 106 |
| 102 Western Baptist | 94 |
| 81 Warner Pacific • | 84 |
| 88 Columbia Christian • | 64 |
| NAIA District 2 Playoffs: | |
| 101 Eastern Oregon | 82 |
| 90 Southern Oregon • | 76 |
| 61 Oregon Tech • | 84 |
| NCCAA Regional Playoffs: | |
| 58 Concordia | 55 |
| 76 Western Baptist | 90 |
| H: 9-4 •A: 8-12 | |
| SEASON: 17-16 | |

1988-89

| | |
|---------------------------|-----|
| 86 Hawaii Pacific | 79 |
| 86 Linfield • | 82 |
| 67 Western Baptist • | 57 |
| 97 Western Oregon | 84 |
| 73 Seattle Pacific | 87 |
| 86 Linfield | 76 |
| 70 Western Baptist | 71 |
| 88 Western Oregon • | 90 |
| 76 Western Baptist • | 79 |
| 86 Western Oregon • | 91 |
| 77 Eastern Oregon • | 94 |
| 74 Oregon Tech • | 81 |
| 81 Azusa Pacific | 73 |
| 93 Bethany Bible | 76 |
| 92 Warner Pacific • | 69 |
| 76 Columbia Christian | 69 |
| 91 Concordia | 79 |
| 88 Northwest Christian • | 79 |
| 90 Northwest Nazarene | 73 |
| 73 College of Idaho | 88 |
| 74 Western Baptist | 96 |
| 96 Northwest Christian | 83 |
| 78 Concordia • | 64 |
| 72 College of Idaho • | 91 |
| 99 Northwest Nazarene • | 97 |
| 88 Columbia Christian • | 85 |
| 100 Warner Pacific | 74 |
| 80 Western Baptist • | 96 |
| NAIA District 2 Playoffs: | |
| 94 Eastern Oregon | 82 |
| 70 Oregon Tech • | 106 |
| H: 12-4 •A: 7-8 | |
| SEASON: 19-12 | |

1989-90

| | |
|--------------------------|----|
| 84 Pacific | 74 |
| 90 Willamette | 75 |
| 89 Western Oregon • | 76 |
| 121 Northwest • | 82 |
| 77 Seattle Pacific • | 87 |
| 104 Columbia Christian | 85 |
| 80 Oregon Tech | 63 |
| 80 Puget Sound • | 68 |
| 84 Willamette • | 92 |
| 86 Western Oregon | 84 |
| 90 Western Oregon • | 72 |
| 90 Point Loma Nazarene • | 86 |

| GFC | Opponent |
|--------------------------|----------|
| 83 Western Washington • | 75 |
| 97 Grace College • | 80 |
| 69 Point Loma Nazarene • | 87 |
| 103 Northwest Nazarene | 92 |
| 72 College of Idaho | 68 |
| 94 Northwest Christian • | 92 |
| 93 Western Baptist | 85 |
| 75 Columbia Christian • | 59 |
| 95 Concordia • | 81 |
| 81 Lewis & Clark | 77 |
| 82 Western Baptist • | 80 |
| 84 Columbia Christian | 74 |
| 96 Warner Pacific • | 72 |
| 68 College of Idaho • | 63 |
| 72 Northwest Nazarene • | 82 |
| 100 Northwest Christian | 49 |
| 94 Warner Pacific | 59 |
| 122 Concordia | 97 |
| NAIA Dist. 2 Playoffs: | |
| 98 Eastern Oregon | 92 |
| 76 Western Baptist | 66 |
| 98 Willamette University | 95 |
| NAIA Nationals: | |
| 73 Pfeiffer College • | 97 |
| H: 16-0 A*: 13-5 | |
| SEASON: 29-5 | |

1990-91

| | |
|---------------------------|-----|
| 110 Northwest Christian | 85 |
| 114 Southern Oregon • | 112 |
| 103 Western Washington • | 62 |
| 91 St. Martin's • | 78 |
| 92 Western Oregon | 85 |
| 127 Columbia Christian | 74 |
| 80 Western Baptist | 83 |
| 102 Lewis-Clark State • | 79 |
| 105 U. Puget Sound • | 100 |
| 101 Mesa State • | 89 |
| 107 Concordia • | 89 |
| 111 Western Oregon • | 106 |
| 106 Eastern Oregon | 76 |
| 118 Columbia Christian • | 75 |
| 93 Western Baptist | 55 |
| 74 College of Idaho • | 79 |
| 102 Northwest Nazarene • | 71 |
| 81 Seattle Pacific | 89 |
| 119 Warner Pacific | 95 |
| 118 Concordia | 93 |
| 88 Northwest Christian • | 95 |
| 116 Warner Pacific • | 103 |
| 77 Northwest Nazarene | 72 |
| 94 College of Idaho | 82 |
| 137 Columbia Christian | 91 |
| 92 Western Baptist • | 76 |
| 97 Concordia • | 101 |
| NAIA District 2 Playoffs: | |
| 80 Linfield | 75 |
| 100 Willamette • | 98 |
| 78 College of Idaho • | 95 |
| H: 11-2 A*: 13-4 | |
| SEASON: 24-6 | |

1991-92

| | |
|---------------------------|-----|
| 95 St. Martin's | 97 |
| 135 Northwest Christian • | 78 |
| 103 Linfield | 101 |
| 107 Columbia Christian | 59 |
| 102 Concordia • | 79 |
| 78 Linfield • | 91 |
| 100 Albertson | 89 |
| 99 Northwest Nazarene | 93 |
| 68 Pacific | 76 |
| 71 Western Baptist • | 74 |
| 88 Oregon Tech | 89 |
| 100 Southern Oregon | 90 |
| 82 Southern Nazarene • | 72 |
| 102 William Jewell • | 81 |

| GFC | Opponent |
|----------------------------|----------|
| 88 Point Loma | 80 |
| 106 Warner Pacific | 70 |
| 92 Eastern Oregon • | 76 |
| 93 Western Oregon | 83 |
| 112 Concordia | 81 |
| 98 Columbia Christian • .. | 79 |
| 86 Northwest Nazarene • .. | 92 |
| 90 Albertson • | 82 |
| 75 Southern Oregon • ... | 73 |
| 84 Oregon Tech • | 77 |
| 71 Western Baptist | 72 |
| 73 Western Oregon • | 87 |
| 80 Pacific • | 92 |

| GFC | Opponent |
|----------------------------|----------|
| 114 Northwest Christian .. | 68 |
| 89 Eastern Oregon | 57 |
| 100 Warner Pacific • | 76 |
| NAIA District 2 Playoffs: | |
| 82 Western Oregon | 81 |
| 87 Willamette • | 107 |
| NAIA National Playoffs: | |
| 90 Missouri Valley • | 70 |
| 85 Eureka • | 77 |
| 82 Northwestern • | 85 |
| H: 11-4 A*: 13-7 | |
| SEASON: 24-11 | |

BRUIN OPPONENTS



ALBERTSON COLLEGE OF IDAHO

Dec. 11 in Caldwell
Feb. 6 in Newberg

Location: Caldwell, Idaho 83605
Established: 1891
Enrollment: 720
Conference: NAIA
District 2, Cascade
Colors: Purple and gold
Nickname: Coyotes

Head Coach: Marty Holly
Coach's record in 12 years: 253-83
1991-92 record: 20-11
Gymnasium: J. A. Albertson Activities Center
Sports Information Director: Dave Hahn
SID Office: (208) 459-5681
SID Home: (208) 454-9285
Series record: GFC 15, AC 15
Last year: GFC won 100-89 in Newberg and 90-82 in Caldwell
Lettermen lost: 3
Lettermen returning: 9
Players to watch: Carlos Palomino, 6-2 Sr. wing; Bart Stepp, 6-0 Sr. guard
Outlook: "If we can hold early in the season, we can become very competitive late in the season. We should be a big physical team with not a great deal of athleticism."



CONCORDIA COLLEGE

Jan. 12 in Portland
Jan. 28 in Newberg

Location: Portland, Ore. 97211
Established: 1950
Enrollment: 1035
Conference: NAIA
District 2, Cascade
Colors: Navy blue and white
Nickname: Cavaliers

Head Coach: Joel Schuldheisz
Coach's record in 8 years: 79-170
1991-92 record: 13-19
Gymnasium: Concordia Gym
Sports Information Director: Mary Schuldheisz
SID Office: (503) 280-8516
SID Home: (503) 282-4640
Series record: GFC 25, CC 6
Last year: GFC won 102-79 in Portland, and 112-81 in Newberg
Lettermen lost: 6
Lettermen returning: 7
Players to watch: Brent Workman, 6-5 Sr. center; Shannon Conley, 6-0 Jr. guard; Dan Meckel, 6-5 Fr. forward
Outlook: "We're not as tall or old as in the past, but we're younger, more athletic, and quicker. We hope to be right in the thick of it."



EASTERN OREGON STATE COLLEGE

**Jan. 15 in La Grande
Jan. 23 in Newberg**

Location:
La Grande, Ore. 97850
Established: 1929
Enrollment: 1,850
Conference: NAIA
District 2, Cascade
Colors: Blue and gold
Nickname: Mountaineers

Head Coach: Howard Gauthier
Coach's record in 2 years: 16-38
1991-92 record: 5-23
Gymnasium: Quinn Coliseum
Sports Information Director: Sam Ghrist
SID Office: (503) 962-3732
SID Home: (503) 963-2007
Series record: GFC 31, EO SC 30
Last year: GFC won 92-76 in
La Grande, 89-57 in Newberg
Lettermen lost: 6
Lettermen returning: 6
Players to watch:
Dave Yamate, 6-4 Sr. guard;
Kale Cockett, 6-7 Sr. center
Outlook: "We are much improved and
should be competitive in the district."



LEWIS & CLARK COLLEGE

**Participant: Lewis &
Clark Tournament
Dec. 29-30 in
Portland**

Location:
Portland, Ore. 97219
Established: 1867
Enrollment: 1,800
Conference: NAIA District
2, NCIC
Colors: Orange and black
Nickname: Pioneers

Head Coach: Bob Gaillard
Coach's record in 3 years: 34-48
1991-92 record: 16-11
Gymnasium: Pamplin Sports Center
Sports Information Director:
Steve Wallo
SID Office: (503) 768-7076
SID Home: (503) 649-1077
Series record: GFC 10, L & C 14
Last year: Did not play
Lettermen lost: 5
Lettermen returning: 5
Players to watch:
Derek Foster, 6-0 Jr. guard;
Jesse Schiel, 6-7 Jr. forward
Outlook: "We will be fairly small with
only two returning seniors, but we
have four returning starters, and that
gives us some cause for optimism."



LINFIELD COLLEGE

**Nov. 24 in
McMinnville
Dec. 8 in Newberg**

Location:
McMinnville, Ore. 97128
Established: 1849
Enrollment: 2,136
Conference: NAIA
District 2, NCIC
Colors: Cardinal and purple
Nickname: Wildcats

Head Coach: Larry Doty
Coach's record in 5 years: 76-67
1991-92 record: 16-13
Gymnasium: Wilson Gym
Sports Information Director: Kelly Bird
SID Office: (503) 472-4121 Ext. 439
Series record: GFC 28, Linfield 18
Last year: GFC won 103-101 in
Newberg, lost 91-78 in McMinnville
Lettermen lost: 5
Lettermen returning: 7
Players to watch:
Konrad Ross, 6-6 Sr. post;
Joel Holland, 6-7 Jr. post
Outlook: "I think that we have a group
that is going to be very competitive.
We have a good mixture of returning
players and new people in the
program."

NORTHWEST CHRISTIAN COLLEGE



Jan. 16 in Newberg
Jan. 22 in Eugene

Location:
Eugene, Ore.
97401-3727
Established: 1895
Enrollment: 230
Conference: National Bible
College Athletic Association
Colors: Blue and gold
Nickname: Crusaders

Head Coach: Dave Lipp
Coach's record in 6 years: 72-83
1991-92 record: 3-25
Gymnasium: O'Hara Catholic School
Sports Information Director:
Dave Lipp
SID Office: (503) 343-1641
SID Home: (503) 484-9643
Series record: GFC 8, NCC 1
Last year: GFC won 135-78 in Eugene
and 114-68 in Newberg
Lettermen lost: 9
Lettermen returning: 4
Players to watch:
Adam McCulley, 6-4 Jr. forward
Outlook: "We'll be better than we were
last year."



NORTHWEST COLLEGE

Nov. 14 in Newberg
Dec. 5 in Kirkland

Location:
Kirkland, Wash. 98033
Established: 1938
Enrollment: 680
Conference: National
Christian College Athletic
Association Division II
Colors: Blue and gold
Nickname: Eagles

Head Coach: Doug Filan
Coach's record in 3 years: 59-44
1991-92 record: 25-11
Gymnasium: Northwest Pavilion
Sports Information Director:
Steven Emerson
SID Office: (206) 822-8266
Series record: GFC 4, NC 0
Last year: Did not play
Lettermen lost: 4
Lettermen returning: 7
Players to watch:
Jason Filan, 6-2 Jr. guard;
Erik Konsmo, 6-6 Sr. forward
Outlook: "I have three guys who have
been here from the start and four
guys who have been here three years
together, so I have a lot of
experience coming back."



NORTHWEST NAZARENE COLLEGE

Dec. 12 in Nampa
Feb. 5 in Newberg

Location:
Nampa, Idaho 83651
Established: 1913
Enrollment: 1,200
Conference: NAIA
District 2, Cascade
Colors: Orange and black
Nickname: Crusaders

Head Coach: Ed Weidenbach
Coach's record in one year: 26-9
1991-92 record: 26-9
Gymnasium: Montgomery Fieldhouse
Sports Information Director:
Rich Sanders
SID Office: (208) 467-8397
SID Home: (208) 477-3257
Series record: GFC 25, NNC 24
Last year: GFC won 99-93 in Newberg,
lost 92-86 in Nampa
Lettermen lost: 5
Lettermen returning: 6
Players to watch:
Mike Chatterton, 5-10 Sr. guard;
Joel Marion, 6-5 Jr. forward
Outlook: "I feel very good about our
chances after a good recruiting year.
We're a lot deeper than last year, but
we have to replace two district
all-stars."



OCCIDENTAL COLLEGE

Dec. 14 in Newberg

Location:
Los Angeles, Calif.
90041
Established: 1887
Enrollment: 1,650
Conference: NCAA
Division III, SCIAC
Colors: Orange and black
Nickname: Tigers

Head Coach: Brian Newhall
Coach's record in 4 years: 54-49
1991-92 record: 14-12
Gymnasium: Rush Gymnasium
Sports Information Director:
James Kerman
SID Office: (213) 257-2699
SID Home: (213) 257-4947
Series record: First meeting
Last year: Did not play
Lettermen lost: 5
Lettermen returning: 7
Players to watch:
Blair Slattery, 6-6 Jr. center;
Hung Duong, 5-8 Jr. guard
Outlook: "It's 'Slattery and the four
dwarfs.' We will play a strictly motion
offense. We'll play strict man-to-man
defense and won't press or fast
break."



OREGON INSTITUTE OF TECHNOLOGY

**Jan. 9 in Newberg
Feb. 12 in Klamath
Falls**

Location:
Klamath Falls, Ore.
97601
Established: 1948
Enrollment: 2,700
Conference: NAIA
District 2, Cascade
Colors: Blue and gold
Nickname: Hustlin' Owls

Head Coach: Dan Miles
Coach's record in 21 years: 443-213
1991-92 record: 21-11
Gymnasium: Owl Court
Sports Information Director:
Valeree Lane
SID Office: (503) 885-1165
SID Home: (503) 477-3257
Series record: GFC 10, OIT 31
Last year: GFC lost 89-88 in Newberg,
won 84-77 in Klamath Falls
Lettermen lost: 7
Lettermen returning: 4
Players to watch:
Jason Chatwin, 6-8 Jr. center;
Travell Bradford, 6-0 Sr. guard
Outlook: "We'll probably be one of the
youngest teams in the Northwest.
We're very young and inexperienced,
but have a chance to knock off a few
good teams."



PACIFIC UNIVERSITY

**Participant: Dis. 2
Tip Off Tournament
Nov. 20-21 in
Salem**

Location:
Forest Grove, Ore. 97116
Established: 1849
Enrollment: 1,580
Conference: NAIA
District 2, NCIC
Colors: Red, black, and
white
Nickname: Boxers

Head Coach: Ken Schumann
Coach's record: first year
1991-92 record: 18-9
Gymnasium: Pacific Athletic Center
Sports Information Director:
Bob Kickner
SID Office: (503) 357-6151, ext. 1361
SID Home: (503) 524-0767
Series record: GFC 25, PU 22
Last year: GFC lost 76-68 in Newberg,
92-80 in Forest Grove
Lettermen lost: 7
Lettermen returning: 7
Players to watch:
Tony Beo, 6-4 Sr. guard
Outlook: "If everything comes together
for us, we have the potential to chal-
lenge for the NCIC title."



**SOUTHERN
OREGON STATE
COLLEGE**

**Participant: Dis. 2
Tip Off Tournament
Nov. 20-21 in
Salem
Jan. 8 in Newberg
Feb. 13 in Ashland**

Location:
Ashland, Ore. 97520
Established: 1882
Enrollment: 4,500
Conference: NAIA
District 2, Cascade
Colors: Black and red
Nickname: Runnin' Raiders

Head Coach: Tom McCracken
Coach's record in 2 years: 26-34
1991-92 record: 13-17
Gymnasium: McNeal Hall
Sports Information Director:
Tag Wotherspoon
SID Office: (503) 552-6824
SID Home: (503) 488-6413
Series record: GFC 12, SOSC 23
Last year: GFC won 100-90 in
Newberg and 75-73 in Ashland
Lettermen lost: 7
Lettermen returning: 4
Players to watch:
Stuart Sadorf, 6-4 Sr. forward;
Darrell Barker, 6-2 Sr. guard
Outlook: "We're very inexperienced.
We only have three kids who played
last year. It will take a while to mesh
things together, but we have some
decent shooters and should be able
to put some points on the board."



**ST. MARTIN'S
COLLEGE**

Nov. 28 in Lacey

Location:
Lacey, Wash. 98503
Established: 1895
Enrollment: 755
Conference: NAIA
District 1
Colors: Red and white
Nickname: Saints

Head Coach: Bob Grisham
Coach's record in 6 years: 106-89
1991-92 record: 23-12
Gymnasium: Pavilion
Sports Information Director:
Adolpho Capestany
SID Office: (206) 438-4372
SID Home: (206) 943-5565
Series record: GFC 5, St. Martin's 3
Last year: GFC lost 97-95 in Newberg
Lettermen lost: 6
Lettermen returning: 6
Players to watch:
Sean Keyes, 6-3 Sr. guard;
Michael Hudson, 6-5 Sr.
guard/forward
Outlook: "We'll be a rebuilding team.
We lost five starters and our top sub.
This will be a transition team."



**WESTERN BAPTIST
COLLEGE**

**Dec. 19 in Newberg
Feb. 18 in Salem**

Location:
Salem, Ore. 97301
Established: 1935
Enrollment: 409
Conference: NAIA
District 2, Cascade
Colors: Royal blue and
gold
Nickname: Warriors

Head Coach: Tim Hills
Coach's record in 18 years: 268-261
1991-92 record: 19-18
Gymnasium: C.E. Jeffers Center
Sports Information Director: Tim Smith
SID Office: (503) 375-7021
Series record: GFC 39, WBC 20
Last year: GFC lost 74-71 in Salem
and 72-71 in Newberg
Lettermen lost: 4
Lettermen returning: 7
Players to watch:
Justin Sherwood, 6-1 Sr. guard;
Steve Nielsen, 6-3 Sr. forward
Outlook: "We're very cautiously
optimistic. Despite the lettermen
returning, we've got new faces who'll
do the playing and need to adapt to
the system. How well we do
depends on how well the new
players adjust."



WESTERN OREGON STATE COLLEGE

**Jan. 26 in Monmouth
Feb. 20 in Newberg**

Location:
Monmouth, Ore. 97361
Established: 1856
Enrollment: 3,700
Conference: NAIA
District 2, Cascade
Colors: Crimson and gray
Nickname: Runnin' Wolves

Head Coach: Tom Kelly
Coach's record in 3 years: 53-43
1991-92 record: 22-11
Gymnasium: New PE Building
Sports Information Director:
Steve Weaver
SID Office: (503) 838-8308
SID Home: (503) 371-7571
Series record: GFC 20, WOSC 44
Last year: GFC won 93-83 in Newberg,
lost 87-73 in Monmouth, and won
82-81 in Newberg
Lettermen lost: 9
Lettermen returning: 3
Players to watch:
Jeff Clark, 6-9 forward/center;
Lance Marr, 6-4 forward/guard
Outlook: "We have a very solid ball
club returning. We'll be a very quick
team. We have a good blend of
returning players and newcomers.
I think we'll be very strong."



WESTERN WASHINGTON UNIVERSITY

**Participant: Lewis &
Clark Tournament
Dec. 29-30 in
Portland**

Location:
Bellingham, Wash.
98225
Established: 1893
Enrollment: 10,000
Conference: NAIA
District 1
Colors: Navy blue, silver,
and white
Nickname: Vikings

Head Coach: Brad Jackson
Coach's record in 7 years: 143-82
1991-92 record: 19-13
Gymnasium: Sam Carver Gymnasium
Sports Information Director:
Paul Madison
SID Office: (206) 676-3108
SID Home: (206) 734-1804
Series record: GFC 3, WWU 1
Last year: Did not play
Lettermen lost: 5
Lettermen returning: 9
Players to watch:
Jeff Dick, 6-2 Jr. guard;
Derrick Thomas, 6-6 Sr. forward
Outlook: "We've got a veteran team.
It's helpful because we have players
who know what to expect and have
done well. We also have good
leadership. The players are confident
and have the desire to get the job
done."



WILLAMETTE UNIVERSITY

**Jan. 19 in Newberg
Participant: Dist. 2
Tip Off Tournament
Nov. 20-21 in
Salem**

Location:
Salem, Ore. 97301
Established: 1842
Enrollment: 1,648
Conference: NAIA
District 2, NCIC
Colors: Cardinal and gold
Nickname: Bearcats

Head Coach: Gordie James
Coach's record in 5 years: 94-54
1991-92 record: 17-13
Gymnasium: Cone Fieldhouse
Sports Information Director:
Cliff Voliva
SID Office: (503) 370-6110
SID Home: (503) 581-6676
Series record: GFC 22, WU 19
Last year: GFC lost 107-87 in Salem
Lettermen lost: 3
Lettermen returning: 9
Players to watch:
Mike Ward, 6-8 post;
Brian Mahoney, 6-5 guard
Outlook: "Versatility and tempo control
could be a key to our success this
year."

COVERING THE BRUINS

Facilities for the working press covering Bruin basketball are provided at the courtside press section on the west side of Miller Gymnasium. Available for each game are team rosters, starting lineups, and pertinent pregame information, including accumulative statistics for the Bruins up to each game. Press box service for each home contest includes quick team and individual statistics at halftime and complete statistics immediately following the game.

Working space and telephones for members of the press desiring them are available in the administrative area off the upper lobby. A courtside telephone also is available. Dressing rooms for both teams are on the lower level, south side.

George Fox College appreciates the cooperation it has shared with the news media. This book has been prepared as a service for area newspapers, radio and television stations, and wire services.

All requests for information, statistics, photographs, and press passes should be directed to Rob Felton, Sports Information Director, George Fox College, 414 N. Meridian St. #6098, Newberg, Oregon 97132-2697. Office phone: (503) 538-8383, ext. 292. Home phone: (503) 538-3055. Athletic Department phone: (503) 538-8383, ext. 249. FAX 537-3830

WILLAMETTE VALLEY NEWS MEDIA

Newspapers

Newberg Graphic
Newberg
Tracy Sumner
538-2181

*Statesman -
Journal*
Salem
Reid English
Roy Gaulp
399-6700
1-800-452-2511
FAX 399-6706

Oregonian
Portland
Dennis Peck
Ken Wheeler
Jason Vondersmith
227-5306
1-800-452-1420
1-800-826-0376

Wire Service

Associated Press
228-2169
1-800-452-3501

Television

KATU-TV
Portland
Lou Gellos
Ron Carlson
Jerry Murphy
231-4268

KGW-TV
Portland
Eric Johnson
Joe Becker
226-5119
226-5111

KOIN-TV

Portland
Ed Whelan
Ann Schatz
464-0600

KPTV

Portland
Michael O'Brien
Phil Cassidy
222-9921

Bruin Cable Network
George Fox College
Dan Hyatt
538-8383, Ext. 360

RADIO BROADCAST

Nine of the Bruins' games will be broadcast live on station KLYC, 1260 AM, McMinnville. KLYC Sports Director Mark Marshall and Don Staples will begin the broadcasts 15 minutes before game time.

- Nov. 21 Tip-Off Tournament in Salem
- Nov. 24 Linfield in McMinnville
- Dec. 8 Linfield in Newberg
- Dec. 19 Western Baptist in Newberg
- Jan. 9 Oregon Tech in Newberg
- Jan. 19 Willamette in Newberg
- Jan. 23 Eastern Oregon in Newberg
- Feb. 6 Albertson in Newberg
- Feb. 20 Western Oregon in Newberg





1992-93 GEORGE FOX COLLEGE BRUIN BASKETBALL

| | | | | | | | |
|-----|----|---------------|-----------------------------------|----------------------------|-----------------------------|--|-----------------------------|
| NOV | 8 | 9 | 10 | 11 | 12 | 13 | 14 Northwest |
| | 15 | 16 | 17 | 18 | 19 | 20-21 NAIA Dist. 2 Tip-Off Tournament at Willamette | |
| | 22 | 23 | 24 Linfield | 25 | 26 | 27 | 28 St. Martin's |
| DEC | 29 | 30 | 1 | 2 | 3 | 4 | 5 Northwest |
| | 6 | 7 | 8 Linfield | 9 | 10 | 11 Albertson C of I* | 12 Northwest Nazarene* |
| | 13 | 14 Occidental | 15 | 16 | 17 | 18 | 19 Western Baptist* |
| | 20 | 21 | 22 | 23 | 24 | 25 | 26 |
| | 27 | 28 | 29-30 Lewis & Clark Tournament | | 31 | 1 | 2 |
| JAN | 3 | 4 | 5 | 6 | 7 | 8 Southern Oregon* | 9 Oregon Tech* |
| | 10 | 11 | 12 Concordia* | 13 | 14 | 15 Eastern Oregon* | 16 Northwest Christian |
| | 17 | 18 | 19 Willamette | 20 | 21 | 22 Northwest Christian | 23 Eastern Oregon* |
| | 24 | 25 | 26 Western Oregon* | 27 | 28 Concordia* | 29 | 30 |
| FEB | 31 | 1 | 2 | 3 | 4 | 5 Northwest Nazarene* | 6 Albertson C of I* |
| | 7 | 8 | 9 | 10 | 11 | 12 Oregon Tech* | 13 Southern Oregon* |
| | 14 | 15 | 16 | 17 | 18 Western Baptist* | 19 | 20 Western Oregon* (H) |
| | 21 | 22 | 23 | 24 | 25 NAIA Dist. 2 Playoffs | 26 | 27 NAIA Dist. 2 Playoffs |
| MAR | 28 | 1 | 2 | 3 NAIA Dist. 2 Playoffs | 4 | 5 | 6 |

All home games are at 7:30 p.m.

* NAIA District 2 conference game
(H) = Homecoming

ON THE COVER

Emerging from the shadow of graduated All-American Dave Wilson, Senior MIKE RASMUSSEN is the Bruins' only returning four-year player. Last year the 6-7 post was one of GFC's most accurate from the field (.551) and finished third on the team in rebounds and points. A team captain, Rasmussen could be one of the best big men in the district this year. Details inside, page 19.