

1996

### 1996 Media Guide

George Fox University Archives

Follow this and additional works at: [https://digitalcommons.georgefox.edu/athletics\\_menbasketball](https://digitalcommons.georgefox.edu/athletics_menbasketball)

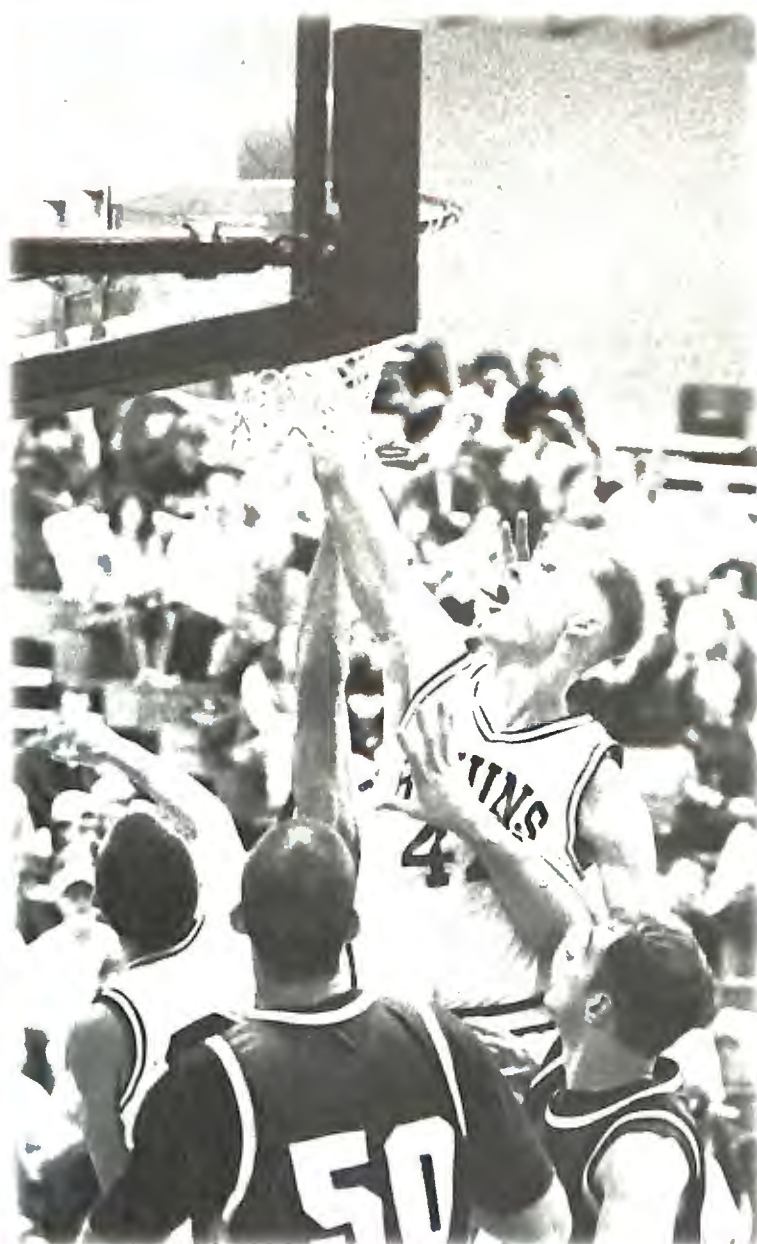
---

#### Recommended Citation

George Fox University Archives, "1996 Media Guide" (1996). *Men's Basketball*. 94.  
[https://digitalcommons.georgefox.edu/athletics\\_menbasketball/94](https://digitalcommons.georgefox.edu/athletics_menbasketball/94)

This Media Guide is brought to you for free and open access by the George Fox University Athletics at Digital Commons @ George Fox University. It has been accepted for inclusion in Men's Basketball by an authorized administrator of Digital Commons @ George Fox University. For more information, please contact [arolfe@georgefox.edu](mailto:arolfe@georgefox.edu).

# GEORGE FOX UNIVERSITY



**1996-97  
MEN'S  
BASKETBALL**

**GF**

# R O S T E R

## George Fox University 1996-97 Men's Basketball Roster

No.	Name	Pos.	Ht.	Wt.	Age	Year	Exp.	Hometown (HS/Previous College)
12	VALENTINE, Kyle	Point	5-10	160	20	So.	1V	West Linn, Ore. (West Linn HS)
14	ROSEN, Andy	Point	5-9	140	19	Fr.	HS	Newberg, Ore. (Newberg HS)
20	SWANSON, David	Point	6-0	130	20	Fr.	HS	Montclair, Calif. (Montclair HS)
21	HOMOLKA, James	Wing	6-0	155	23	Sr.	2V	Hayden Lake, Idaho (North Idaho Christian HS)
22	LARSON, Jon	Wing	6-1	175	20	So.	HS	Post Falls, Idaho (Gonzaga Prep/Northwest College)
24	TAYLOR, Austin	Wing	6-2	185	19	Fr.	HS	Newberg, Ore. (Newberg HS)
30	NEWKIRK, Aaron	Wing	6-1	180	20	So.	1V	Central Point, Ore. (Crater HS)
32	DOHREN, Tony	Wing	6-4	190	21	So.	1CC	Medford, Ore. (St. Mary's HS College of the Siskiyou/Southern Oregon State)
34	KROON, Ben	Wing	6-6	175	19	Fr.	HS	Wasilla, Alaska (Wasilla HS)
40	BUECHSEL, Tim	Wing	6-4	200	18	Fr.	HS	Wettenberg, Germany (Immanuel HS)
41	BENTLEY, Shane	Post	6-5	230	18	Fr.	HS	Stevenson, Wash. (Stevenson HS)
42	FABER, Mike	Wing	6-8	200	19	So.	1V	Salem, Ore. (Salem Academy)
44	ANKENY, Luke	Post	6-4	215	19	So.	1V	Homedale, Idaho (Homedale HS)

### GUIDE TO THE GUIDE

George Fox University .....	1
Athletic Affiliation .....	2
George Fox National Rankings .....	2
George Fox Athletics .....	3
George Fox Facilities .....	4
Bruin Mascot .....	4
George Fox Basketball History .....	5
George Fox Playoff History .....	5
1995-96 Highlights .....	6
1995-96 Stats/Results .....	7
1996-97 Outlook .....	8-9
1996-97 Experience Chart .....	9
1996-97 Team Photo .....	9
Player Biographical Info .....	10-16
Head Coach .....	17
Bruin Staff .....	18-20
All-Time George Fox NAIA Roster .....	21
Honored Bruins .....	22
Year-By-Year Leaders .....	23
Bruin Top Ten .....	24-25
Value Point System .....	25
Individual Records .....	26
Team/Miller Gym Records .....	27
Bruin Season Scores .....	28-30
Opponent Information .....	31-32
Media Info .....	33
Schedule .....	33/Back Cover

### HOW TO REACH US

<b>College Switchboard</b> 503/538-8383 • <b>Athletics Fax</b> 537-3864
<b>Sports Information Fax</b> 537-3830 • <b>Courtside Phone</b> 537-3594
<b>Men's Basketball Coach</b>
Mark Vernon ..... 503/538-8383 ext. 2918, Home 538-2091
<b>Women's Basketball Coach</b>
Scott Rueck ..... ext. 2920, Home 538-7274
<b>Volleyball Coach</b>
Steve Grant ..... ext. 2917, Home 538-2091
<b>Women's Soccer Coach</b>
Byron Shenk ..... ext. 2912, Home 472-6620
<b>Men's Soccer Coach</b>
Manfred Tschan ..... ext. 2919, Home 538-7131
<b>Baseball Coach</b>
Pat Bailey ..... ext. 2914, Home 537-3023
<b>Softball Coach</b>
Chris Gross ..... ext. 2272, Home 538-1248
<b>Track/Cross Country Coach</b>
Wes Cook ..... ext. 2915, Home 538-8078
<b>Men's Tennis Coach</b>
Mark Sendelback ..... ext. 2923, Home 648-4815
<b>Women's Tennis Coach</b>
Bonnie Elliott ..... ext. 2913, Home 642-2375
<b>Athletic Director</b>
Craig Taylor ..... ext. 2911, Home 472-9694
<b>Associate Athletic Director</b>
Hal Adrian ..... ext. 2922, Home 646-4880
<b>Sports Information Director</b>
Rob Felton ..... ext. 2127, Home 538-7722

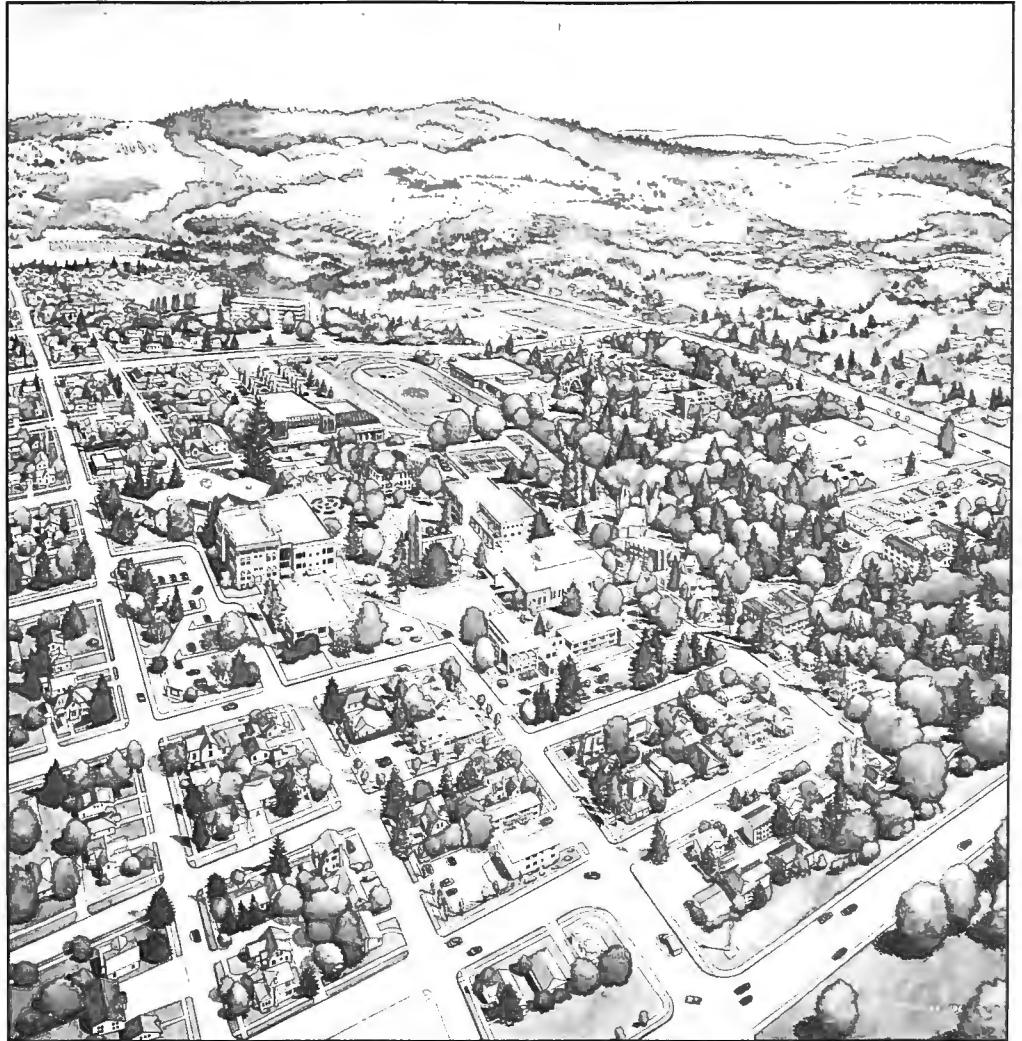
One of the nation's fastest growing universities, George Fox University has a growing reputation to match. While enrollment has quadrupled in the last decade — reaching more than 2,000 students — the University has received national attention.

George Fox has been repeatedly named by *U.S. News & World Report* as one of "America's Best Colleges," earning its highest marks in academic reputation. The national magazine also has listed the University in its "Top Teaching Schools," and "Most Efficient" categories.

Five times, George Fox was named to the Templeton Foundation's Honor Roll for Character Building Colleges.

The University offers innovative programs. Each freshman undergraduate student is provided a computer to keep upon graduating. Students reaching their junior year are eligible for an international study trip for which the University pays transportation costs. Through the Coalition for Christian Colleges and Universities and the Christian College Consortium, George Fox has students studying in five affiliated campuses, ranging from Hollywood Film Studies in California to American Studies in Washington, D.C., to Middle East Studies in Cairo, Egypt.

Early Willamette Valley Quaker settlers established Friends Pacific Academy in 1885. The college division was organized in 1891 to provide more advanced instruction.



*An artist's rendering of the George Fox University Newberg campus.*

In 1949, because of the many colleges in the Northwest with Pacific in their name, the College was renamed George Fox in honor of the founder of the Friends (Quaker) Church. In 1996, with the addition of Western Evangelical Seminary, George Fox became a university, offering students the choice of 35 undergraduate majors and 12 graduate degrees.

George Fox has maintained a distinctively Christian, liberal arts

mission. The University is committed to a residential campus atmosphere where students build a life plan. Education occurs whenever and wherever student experience contributes to human development — in or out of the classroom. The integration of faith, learning and living is a primary objective.

George Fox's most prominent alumnus is the late President Herbert Hoover, who attended Pacific Academy.

## ATHLETIC AFFILIATION

The landscape of small-college athletics in the Pacific Northwest is undergoing sweeping changes, and George Fox University is in the midst of the transformation.

In the fall of 1994, the University joined the Northwest Conference of Independent Colleges (NCIC), a league of 10 strong academic institutions in Oregon and Washington. That winter, the NCIC applied for membership in the National Collegiate Athletic Association (NCAA) Division III. The move meant leaving the National Association of Intercollegiate Athletics (NAIA), an association George Fox had held membership in since 1965.

George Fox and the NCIC members have provisional membership in the NCAA but will continue to compete in NAIA national championships until 1998-99, when they expect to be eligible for NCAA Division III national championships.

George Fox's men's and women's basketball teams compete in NAIA Division II, while the 11 other sports the University competes in are not divided into divisions by the NAIA.

The NAIA is an autonomous association administering programs leading to 13 men's and 11 women's championships. The NAIA includes about 350 four-year colleges and universities in 49 states and Canada. They are grouped in nine regions and 44 conferences.

The NCAA administers 80 championships in 21 sports for its 1,201 member institutions, involving nearly 21,000 men and women scholar-athletes. There are more than 350 schools in Division III.



## GEORGE FOX NAIA TOP-25 RANKINGS

	Preseason	Highest	Final
<b>NAIA (prior to divisions)</b>			
1986-87	NR	19	NR
1989-90	22	9	9
1990-91	NR	19	22
<b>NAIA Division II</b>			
1991-92	2	2	7
1992-93	12	12	NR

## 1995-96 NORTHWEST CONFERENCE STANDINGS

Whitworth	(26-5)	12-2
Lewis & Clark	(17-10)	9-5
PLU	(12-12)	8-6
Linfield	(11-14)	8-6
<b>George Fox</b>	<b>(11-13)</b>	<b>6-8</b>
Pacific	(10-15)	6-8
Willamette	(11-13)	5-9
Whitman	(7-17)	2-12

University of Puget Sound\*  
Seattle University\*\*

\*member in 1996-97

\*\*member in 1997-98

## GEORGE FOX NAIA SERIES RECORDS: (SINCE 1965)

### Opponent/Series Record Last Meeting/Location

Albertson College of Idaho 2/3/95: Albertson 89, GF 64	Albertson leads 19-17 Newberg, Ore.
Christian Heritage College 1/4/96: CHC 87, GF 84 (OT)	CHC leads 1-0 El Cajon, Calif.
Columbia Christian College 1/25/92: GF 98, CCC 79	GF leads 27-0 Portland, Ore.
Concordia University (Ore.) 1/23/96: GF 85, Concordia 69	GF leads 33-8 Newberg, Ore.
Eastern Oregon State College 2/18/95: GF 78, EOSC 77	Series tied 34-34 La Grande, Ore.
Grace College 1/5/90: GF 97, Grace 80	GF leads 1-0 +San Diego, Calif.
Humboldt State University 12/28/94: Humboldt St. 86, GF 80	Humboldt St. leads 1-0 *Chico, Calif.
Lewis & Clark College 2/10/96: GF 81, L&C 77	L&C leads 17-12 Newberg, Ore.
Linfield College 2/17/96: GF 93, Linfield 84	GF leads 31-23 Newberg, Ore.
Mesa State College 12/14/90: GF 101, Mesa St. 89	GF leads 1-0 %Portland, Ore.
Northwest Christian College 2/8/94: NCC 104, GF 95	GF leads 11-2 Eugene, Ore.
Northwest College 1/27/94: Northwest 75, GF 70	GF leads 5-2 Kirkland, Wash.
Northwest Nazarene College 2/4/95: NNC 75, GF 70	Series tied 27-27 Newberg, Ore.
Occidental College 12/14/92: GF 90, Occidental 64	GF leads 1-0 Newberg, Ore.
Oregon Institute of Technology 2/10/95: OIT 96, GF 78	OIT leads 35-12 Newberg, Ore.
Pacific University 2/6/96: GF 69, Pacific 56	GF leads 27-26 Newberg, Ore.
Pacific Lutheran University 2/12/96: PLU 97, GF 84	PLU leads 2-1 Newberg, Ore.
Pfeiffer College 3/13/90: PC 97, GF 73	PC leads 1-0 Kansas City, Mo.
Point Loma Nazarene College 1/6/96: Pt. Loma 87, GF 72	Pt. Loma leads 3-2 San Diego, Calif.
University of Puget Sound 12/5/95: UPS 101, GF 81	UPS leads 7-2 Newberg, Ore.
Saint Martin's College 11/15/94: GF 90, St. Martin's 63	GF leads 8-4 Newberg, Ore.
Seattle Pacific University 1/15/91: SPU 89, GF 81	SPU leads 12-1 Newberg, Ore.
Seattle University 12/9/95: GF 84, Seattle U 62	GF leads 3-0 Newberg, Ore.
Southern Nazarene University 1/9/92: GF 82, SNU 72	GF leads 1-0 #San Diego, Calif.
Southern Oregon State College 11/21/95: SOSC 80, GF 79	SOSC leads 25-19 Ashland, Ore.
Warner Pacific College 2/25/92: GF 100, Warner Pacific 76	GF leads 41-17 Portland, Ore.
Western Baptist College 12/15/95: W. Baptist 127, GF 115	GF leads 46-26 Salem, Ore.
Western Oregon State College 2/14/95: GF 94, WOSC 78	WOSC leads 48-22 Newberg, Ore.
Western Washington University 11/17/90: GF 103, WWU 62	GF leads 3-1 @Ashland, Ore.
Whitman College 2/3/96: Whitman 68, GF 61	GF leads 7-3 Walla Walla, Wash.
Whitworth College 2/2/96: Whitworth 78, GF 59	Whitworth leads 4-2 Spokane, Wash.
Willamette University 2/16/96: Willamette 77, GF 69	GF leads 25-23 Newberg, Ore.
William Jewell College 1/10/92: GF 102, William Jewell 81	GF leads 1-0 #San Diego, Calif.

\* Chico State Tournament, Chico, Calif.

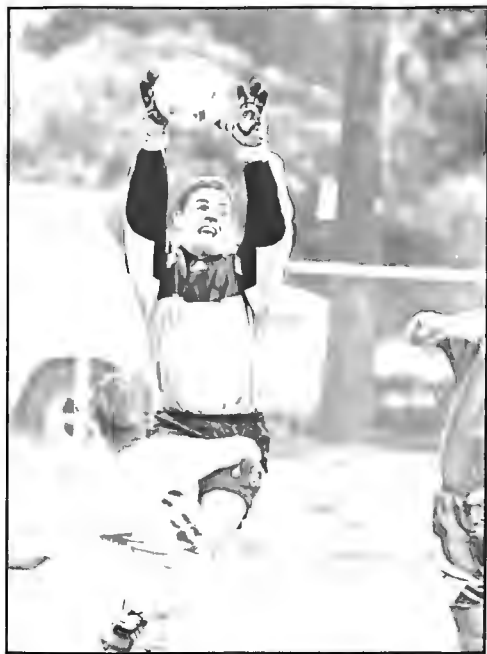
# Point Loma Nazarene College Classic, San Diego, Calif.

% Cypress Inn Tournament, Portland, Ore.

@ NAIA Tip-Off Tournament, Ashland, Ore.

+ Point Loma Tournament, San Diego, Calif.





*Jeff Nelson, 1994-95 NAIA National Goalkeeper of the Year (Intercollegiate Soccer Association of America).*

George Fox University maintains one of the Northwest's most successful small-college athletic programs.

The teams win. George Fox has earned district or conference titles in eight sports during the 1990s. George Fox's highest national team finish came in the fall of 1992 when the women's cross country team finished as national runner-up.

The athletes are successful. George Fox athletes have earned more than 100 NAIA All-American awards and half as many All-American Scholar-Athlete honors.

The coaches are award winners as well. Every head coach who has held their position for more than one year has been named district or conference Coach of the Year at least once.

Intercollegiate athletics is an integral part of the overall education program at George Fox. About 15 percent of the traditional undergraduate student body participates in varsity athletics. Men's varsity athletic teams represent the University in baseball, basketball, track, tennis, cross country and soccer. Women's teams are fielded in volley-



*College Sports magazine named George Fox basketball/track athlete Nancy Rissmiller 1995-96 NAIA national female athlete of the year.*



*Jill Beals (right) 13-time All-American, 1992 Hayward Award finalist, and Seattle Marathon winner.*



*1991-92 first-team All-American center Dave Wilson.*

ball, basketball, track, tennis, softball, cross country and soccer.

Athletic facilities include the Coleman H. Wheeler Sports Center, which includes three basketball or volleyball courts and two racquetball courts. Seating is available for up to 2,000. The track and field teams

compete on Colcord Field, which received a new polyurethane surface in 1993. The Curtis and Margaret Morse Athletic Complex contains a baseball diamond, softball field and soccer field. In 1994, five tennis courts were installed in preparation for the addition of tennis as a varsity sport.



### **WHEELER SPORTS CENTER: A natural place for basketball**

Entered by crossing a wooded canyon on a 200-foot bridge, the Coleman H. Wheeler Center for Sports and Physical Education is a natural place to play basketball.

The sports center was designed by noted architect Pietro Belluschi to sit unpretentiously alongside tree-shaded Hess Creek Canyon. Built using gifts from prominent lumbermen, the building features a two-level oak parquet lobby and a large window area overlooking the adjacent natural terrain.

Completed in June 1977, the \$2.7 million, 55,000-square-foot complex is the University's largest building. It contains the James and Lila Miller Gymnasium, the Bruin home court.

Wheeler Center features a 116-by-174-foot gymnasium with three basketball courts and seating for 2,000 spectators. The gymnasium ceilings are 32 feet over the hardwood maple floor. The gym provides three volleyball courts and 10 badminton courts.

The building may be entered on two levels. The east-side ground level is accessible from the parking lot by crossing the foot bridge. The on-campus community enters on the

west-side second floor.

Contained on the upper level are a staff room, multipurpose room, classrooms, and athletic administration and faculty offices. A 1,500-square-foot weight room was remodeled in the summer of 1993. The lower level contains a concession area, dressing rooms, team rooms, laundry, equipment-issuing room, and storage space. An east wing of the building houses two racquetball courts.

The building is named for long-time Oregon lumberman Coleman H. Wheeler, former chairman of the board of Willamette Industries. The gymnasium is named for former George Fox board member James Miller and his wife, Lila. He is the former president of Cascadia Lumber Co.

### **BACKGROUND ON THE BRUIN NICKNAME**

George Fox's Bruin nickname comes from a real bear captured in 1887 just two years after Pacific Academy (the University's predecessor) was established. The small cub was found in the Coast Range foothills west of Carlton when its mother was shot.

The young cub was brought to campus by a student and later lived with a faculty member.

When it grew to adulthood, it was kept in a pit in what is now known as Hess Creek Canyon south of the campus. It escaped one too many times and was turned into steak for the dining table and the hide preserved on a frame and displayed in an early campus museum. When the hide deteriorated several years later, it was taken to a campus furnace room to be destroyed, but the framework proved a problem in dismantling so it was left sitting in a corner.

Students found the old Bruin skin later and began skirmishes over ownership, a tradition that continues today. "Bruin Junior," a replica, under a set of guidelines passed down for years, is fought over periodically in class competition, with the class able to physically drag the Bruin replica off campus declared the rightful owner until next "flashed."

Even with the Bruin tradition, somewhere along the line, the "Quaker" tag for athletic teams came into popularity with sportswriters because of the University's church affiliation, and that

nickname was used, along with the mascot "Foxy George," a little fox with a

Quaker hat.

Both gained acceptance for a period in the 1950s and 1960s until a vote of faculty, students and administration in 1970 reinstated the Bruin nickname to its rightful place.



## BASKETBALL AT GEORGE FOX

The game of basketball was invented by Dr. James Naismith in 1891, and it took just seven years for it to be brought to George Fox University (then called Pacific College).

University board member and community leader T. W. Hester and others first saw the game played at the Portland YMCA. They were captivated by the new game and secured a ball, which they brought back to the University. The first exhibition game was played shortly thereafter, in the winter of 1898. The first site was the third floor of the old Commercial Hotel on North Main Street because the University had no adequate space for the new sport.



*George Fox (Pacific) team in 1916-17*

until 1946, when George Fox opened Hester Gymnasium, a concrete-block structure built partly by student/faculty labor at a cost of \$40,000. The building, with a single hemlock playing floor and seating for 1,100, served until the opening of the Wheeler Center in 1976-77.

George Fox's athletic affiliation in men's basketball has gone from independent status to membership in the old Willamette Christian College Conference, the Metropolitan Conference, and the Oregon Collegiate Conference. From 1965 through 1993, George Fox was an independent member of NAIA District 2. In 1993 the NAIA voted to eliminate the district format for national tournament qualification and switched to affiliated conferences. After two years in the Cascade Collegiate Conference, George Fox joined the Northwest Conference of Independent Colleges in 1995-96.

In 1973, George Fox won its first NAIA District 2 title. The Bruins have advanced to NAIA postseason play 20 of the last 26 years, including 11 of the last 13. The 1991-92 team produced George Fox's highest national finish, advancing to the NAIA Division II quarterfinals with two national tournament wins.

"Our greatest basketball year," according to a University publication, *The First Fifty Years* (published in 1941), "was reached in 1917 when Pacific College won the [Willamette Valley] league championship and defeated Oregon State College 34-25." There have, of course, been many significant wins, seasons and players since 1898. Much of that history, however, has been lost because of the lack of available information and incomplete records prior to NAIA membership in 1965. Highlights and records since that time appear in the records section. Pre-NAIA statistics available show these marks: Bill Hopper with a 42-point game and 1,737 career points in 1954-58, and Cub Grimm in the 1952-53 season with a 21.0-points-per-game average and 26 free throws in a contest with the Oregon Medical School.



*1990 district championship game*

## GEORGE FOX NAIA PLAYOFF RESULTS

- 1970-71 Willamette University (lost 103-69)
- 1971-72 Willamette University (lost 69-60)
- 1972-73 Linfield College (won 95-88)  
Pacific University (won 68-67) (*District title*)  
(*NAIA national championships*)  
Defiance (Ohio) College (lost 86-62)
- 1973-74 Pacific University (won 92-72)  
Oregon Institute of Technology (lost 55-54)
- 1974-75 Oregon Institute of Technology (lost 72-56)
- 1976-77 University of Hawaii - Hilo (lost 85-79)
- 1977-78 Oregon Institute of Technology (lost 79-65)
- 1979-80 Oregon Institute of Technology (lost 69-67)
- 1980-81 Northwest Nazarene (lost 61-58)
- 1983-84 Western Oregon State (lost 86-72)
- 1984-85 Western Baptist (won 50-47)  
Western Oregon State (won 71-57)  
College of Idaho (lost 61-53)
- 1985-86 Warner Pacific (won 66-56)  
Oregon Institute of Technology (lost 76-67)
- 1986-87 Warner Pacific (won 101-75)  
College of Idaho (won 75-58)  
Oregon Institute of Technology (lost 75-69)
- 1987-88 Eastern Oregon (won 101-82)  
Southern Oregon (won 90-76)  
Oregon Institute of Technology (lost 84-61)
- 1988-89 Eastern Oregon (won 94-82)  
Oregon Institute of Technology (lost 106-70)
- 1989-90 Eastern Oregon (won 98-92)  
Western Baptist (won 76-66)  
Willamette (won 98-95) (*District title*)  
(*NAIA national championships*)  
Pfeiffer (N.C.) (lost 97-73)
- 1990-91 Linfield (won 80-75)  
Willamette (won 100-98)  
College of Idaho (lost 95-78)
- 1991-92 Western Oregon (won 82-81)  
Willamette (lost 107-87)  
(*at-large berth NAIA Division II national championships*)  
Missouri Valley (won 90-70)  
Eureka (Ill.) (won 85-77)  
Northwestern (Iowa) (lost 85-82)
- 1993-94 Eastern Oregon (lost 104-97)
- 1994-95 Western Baptist (lost 89-86)



## High Scoring Bruins Finish First Season in Northwest Conference

George Fox ended its first season in the Northwest Conference of Independent Colleges with a sweet taste in the mouth.

In front of a packed Homecoming crowd of 2,000, the Bruins and Yamhill County rival Linfield College played a thriller. In the final minute, senior wing Travis Orick made a steal and breakaway dunk to start the celebration of a hard-earned win in George Fox's conference and season finale.

The switch in alliance from the Cascade Conference to the Northwest Conference added spark to rivalries with local conference opponents like Linfield College, Willamette University, Pacific University and Lewis & Clark College. George Fox posted at least one win against each.

It was a season without great peaks or valleys. The team's longest losing or winning streak was two. In the final game, the Bruins were playing for pride. George Fox fell out of postseason contention in the final week of the season. Finishing 11-13 overall, the Bruins tied for fifth in the conference — one spot shy of a playoff berth.

"We were a team that played pretty close to our potential," said head coach Mark Vernon. The Bruins were the second-highest scoring team in the conference at 78.8 points per game but were outrebounded in all but two of their 24 games.

George Fox had two of the conference's top shot blockers in 6-foot-7 sophomore Jared Gallop and 6-8 freshman Mike Faber.

Gallop scored 39 points against

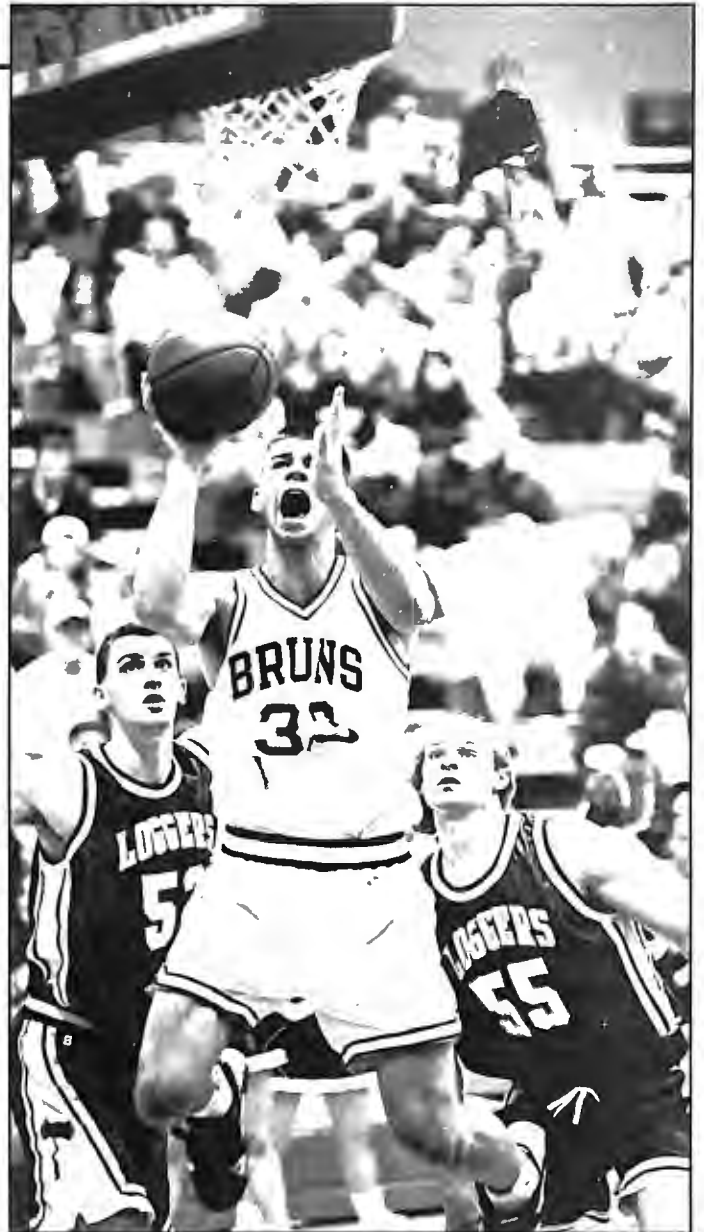
Concordia University, the third-highest scoring game in George Fox NAIA history. He finished fifth in the conference in scoring with a 18.0 average and seventh in rebounding with 6.7 a game. He was named second team all-conference, the highest honor awarded an underclassman that season. Twice he was named conference player of the week.

Faber ended his first season on a promising note, scoring a season-high 21 points and blocking four shots in the final game.

Point guard Kyle Valentine, a redshirt freshman, led the team in assists and free throw percentage and was named the team's best defender by his teammates.

The roster was unusual: Six seniors, one sophomore and six freshmen. Three seniors were in their fourth year in the program: team co-captain Aaron Downs, Grant Hartenstein and Nick Haij.

Haij and Hartenstein were four-year starters and ended their careers in the George Fox top 10 for career scoring. Haij finished in sixth place with 1,714 points (15.2 ppg). An honorable mention all-conference pick, Haij left with every school 3-point attempted and made record



*Jared Gallop*

for a game, season and career. Haij was the team's leading scorer during the conference season at 17.1 points a game and averaged 15.0 over the entire season, 11th in the NCIC.

Hartenstein wound up eighth in career scoring with 1,346 points (11.6 ppg) and third in career assists with 511 (4.41 apg).

The team gave its Most Valuable Player award to Orick, the team's emotional leader.

# 1995-96 STATISTICS / RESULTS

PLAYER	GAMES		MINUTES		FIELD GOALS			3-POINTERS			FREE THROWS			REBOUNDS				PF-FO A TO BLK ST						POINTS			
	GP	GS	MIN	AVG	FG	FGA	PCT	FG	FGA	PCT	FT	FTA	PCT	OFF	DEF	TOT	AVG								PTS	AVG	
Jared Gallop	24	24	785	32.7	165	331	.498	16	52	.308	85	111	.766	48	113	161	6.7	74	4	35	66	22	15		431	18.0	
Nick Haij	23	15	677	29.4	116	281	.413	82	211	.389	30	40	.750	22	61	83	3.6	56	2	39	28	2	31		344	15.0	
Travis Orick	24	24	724	30.2	102	238	.429	48	137	.350	49	86	.570	34	79	113	4.7	67	2	68	53	6	33		301	12.5	
G. Hartenstein	24	16	681	28.4	80	201	.398	38	105	.352	64	90	.711	25	60	85	3.5	55		372	69	1	28		262	10.9	
Kyle Valentine	24	10	481	20.0	47	110	.127	15	45	.333	69	90	.767	15	32	47	2.0	60	3	74	43	1	34		178	7.4	
Mike Faber	24	23	605	25.2	49	116	.509	18	39	.462	25	40	.625	36	59	95	4.0	82	5	35	39	42	30		161	6.7	
Aaron Downs	23	7	436	19.0	36	78	.462	13	39	.333	20	28	.714	18	36	54	2.3	64	1	43	32	0	43		105	4.6	
Kevin Long	22	1	167	7.6	15	30	.500	0	1	.000	7	12	.583	14	22	36	1.6	18	0	1	3	2	4		37	1.7	
J. Beddingfield	15	0	29	1.9	9	19	.474	4	10	.400	8	12	.667	4	2	6	0.4	7	0	2	0	0	1		30	2.0	
Aaron Newkirk	21	0	151	7.2	8	24	.333	1	5	.200	5	12	.417	17	12	29	1.4	23	2	14	9	0	9		22	1.0	
TEAM REBOUNDS														33	45	78											
GEORGE FOX	24		4825		646	1452	.445	235	646	.364	365	525	.695	278	534	812	33.8	516	22	386	347	77	233		1892	78.8	
OPPONENTS	24		4825		647	1412	.458	169	462	.366	479	645	.743	318	624	942	39.3	486		395	384	57	195		1942	80.9	

## 1995-96 RESULTS

Date	W/L	Opponent	High Points	High Rebounds	High Assists
11-21	L 79-80	Southern Oregon	Gallop, 28	Faber, 10	Orick, 6
11-28	W 87-80	Western Baptist	Gallop, 20	Gallop, 14	Gallop, 5
12-1	W 78-73	Concordia	Gallop, 39	Gallop, 10	Four with three
12-5	L 81-101	Puget Sound	Gallop, 17	Orick/Downs, 5	Orick, 6
12-9	W 84-62	Seattle University	Gallop, 22	Gallop, 8	Valentine, 4
12-16	L 115-127	Western Baptist	Orick/Hartenstein, 18	Faber, 6	Orick, 5
12-19	W 77-73	Pacific	Gallop, 31	Three with five	Valentine, 4
1-4	L 84-87	Christian Heritage	Gallop, 32	Gallop, 10	Hartenstein, 6
1-6	L 72-87	Point Loma Nazarene	Gallop, 19	Gallop, 6	Haij, 5
1-12	W 74-69	*Lewis & Clark	Haij, 14	Gallop/Haij, 6	Valentine/Orick, 3
1-13	L 57-78	*Pacific Lutheran	Haij, 14	Gallop, 14	Hartenstein, 4
1-16	L 68-83	*Pacific	Haij, 19	Gallop/Orick, 9	Valentine, 5
1-19	W 93-75	*Whitman	Gallop, 22	Orick, 5	Hartenstein, 5
1-20	L 75-86	*Whitworth	Orick, 18	Faber, 7	Haij, 4
1-23	W 85-69	Concordia	Gallop, 18	Gallop/Valentine, 8	Valentine, 11
1-26	L 84-101	*Linfield	Haij, 25	Hartenstein, 8	Valentine, 5
1-27	W 83-74	*Willamette	Haij, 26	Hartenstein, 6	Hartenstein, 7
2-2	L 59-78	*Whitworth	Haij, 23	Gallop/Haij, 8	Orick, 4
2-3	L 61-68	*Whitman	Haij, 23	Faber, 7	Hartenstein, 4
2-6	W 69-56	*Pacific	Orick, 20	Gallop, 12	Hartenstein, 5
2-10	W 81-77	*Lewis & Clark	Gallop, 36	Hartenstein/Orick, 7	Orick, 7
2-12	L 97-84	*Pacific Lutheran	Valentine, 18	Hartenstein, 10	Downs, 3
2-16	L 69-77	*Willamette	Hartenstein, 16	Faber, 8	Haij, 6
2-17	W 93-84	*Linfield	Faber, 21	Hartenstein, 6	Hartenstein, 4

\* Northwest Conference Game

## Young Bruins Build for Future

George Fox enters the 1996-97 men's basketball season with a starting lineup of three sophomores and two freshmen.

In his 15-year tenure as head coach, Mark Vernon hasn't had a younger team. He holds high expectations for them in the future, but this probably won't be the season the Bruins make their third trip of the '90s to the NAIA national tournament.

"Obviously, it's a rebuilding year due to the fact we're a freshman/sophomore-dominated team," he says. "We just hope the players can develop this season so we can be a factor in the conference and build for something bigger and better in the next couple years. I think this team has a chance to surprise people even though they are very young. We want to be a team people don't overlook."

Few will overlook 6-foot-8 wing Mike Faber (So., Salem Academy, Ore.). Faber is the top returning shot blocker in the Northwest Conference and led his team in 3-point accuracy (.462).

Vernon says Faber is stronger and more confident in his second collegiate season.

"Mike is our go-to guy and should be our leading scorer," he says.

The other returning starter is point guard Kyle Valentine (So., West Linn HS, Ore.). Valentine led last year's team with 3.1 assists a game, despite averaging just 20 minutes a game.

Vernon is expecting Valentine to score in double figures, run the team, and be a defensive leader.

"I wouldn't trade Kyle for any point guard in our conference," he says. "We're counting on Mike and Kyle to carry the load this year with



*Kyle Valentine*

the absence of Jared Gallop."

Faber and Valentine stepped into the spotlight after post Jared Gallop (Jr., Roseburg HS, Ore.) —the Bruins' leading scorer and rebounder — was sidelined by back pain during the preseason. Gallop —a conference second-team selection with 18.0 points and 6.7 rebounds a game — probably will redshirt.

After a redshirt freshman season and a year coming off the bench behind Nick Haij, the most prolific 3-point shooter in school history, wing Aaron Newkirk (So., Crater HS, Central Point, Ore.) has earned a starting position.

"Aaron should step in and take Nick's position at shooting guard," says Vernon. "Aaron is a tough defender, a good passer, and an excellent shooter. He takes high-

percentage shots and knocks them down. We need him to be a double-figure scorer this year."

Two freshmen also are battling for a spot in the starting lineup: 6-6 wing Ben Kroon (Fr., Wasilla HS, Alaska) and 6-5 post Shane Bentley (Fr., Stevenson HS, Wash.).

Kroon averaged 22.1 points and 8.6 rebounds in high school and twice won all-state honorable mention. Vernon says he might be the team's best rebounder and is a good inside scorer.

At 230 pounds, Bentley gives the Bruins a strong presence underneath the basket.

Another returner who could break into the starting lineup is 6-5 post Luke Ankeny (So., Homedale HS, Idaho). A track sprinter, Ankeny is the team's fastest player endline to endline.

When he finishes enough credits to become eligible after the fall semester, transfer Tony Dohren (So., St. Mary's HS, Medford, Ore.) is expected to battle for a starting wing position. Vernon says Dohren will give the Bruins solid passing and defense. After averaging 22.0 points as a high school senior, Dohren played the 1994-95 season at College of the Siskiyous. He transfers from Southern Oregon State College, where he did not play.

Vernon says his reserves will determine the way the team will play.

"We will play extremely hard every night, but our style will be dictated by how much our young players progress," he says. "If we can go to the bench more, we'll use a quicker style of play. If we have to keep Valentine and Faber on the floor, we may slow it down."

When Vernon wants instant

offense, he'll call on wing Austin Taylor (Fr., Newberg HS, Ore.).

"Austin is a player who has no fear," says Vernon. "He will give us scoring coming off the bench. He steps on the floor firing."

Off the bench, Vernon can call on his only upperclassman, wing James Homolka (Sr., North Idaho Christian HS, Hayden Lake, Idaho), redshirt freshman point guard David Swanson (Fr., Montclair HS, Calif.) and three new wings. All three have different strengths.

Northwest College transfer Jon Larson (So., Gonzaga Prep, Post Falls, Idaho) is a good 3-point shooter and solid defender.

Tim Buechse (Fr., Immanuel HS, Wettenberg, Germany) was a German exchange student who earned all-league honors in one season of high school basketball in California. Vernon says he's one of the team's best post defenders and a solid rebounder.

One of two Newberg High School graduates on the team, Andy Rosen (Fr., Newberg HS, Ore.) will be used for his defensive capabilities.

George Fox plays seven non-conference contests before starting play Jan. 3 in the nine-team Northwest Conference of Independent Colleges.

On the Bruins' schedule are the two teams which played in last year's NAIA Division II national championship: runner-up Whitworth College and champion Albertson College of Idaho.

The Bruins will travel to Albertson Dec. 13-14 for a tournament that includes Northwest Nazarene College and Willamette University, two other teams with national tournament tradition.



## 1996-97 BRUINS

Left to right: *front row* — Assistant Coach Aaron Downs, James Homolka, David Swanson, Jon Larson, Aaron Newkirk, Kyle Valentine, Andy Rosen, Head Coach Mark Vernon  
*back row* — Austin Taylor, Shane Bentley, Jared Gallop, Mike Faber, Ben Kroon, Luke Ankeny, Tim Buechse *Not pictured* — Tony Dohren

## EXPERIENCE CHART

### Returning Lettermen:

Luke Ankeny  
Mike Faber  
James Homolka  
Aaron Newkirk  
Kyle Valentine

### Newcomers:

Shane Bentley  
Tim Buechse  
Tony Dohren  
Ben Kroon  
Jon Larson  
Andy Rosen  
David Swanson  
Austin Taylor

### By Class:

#### Senior:

James Homolka

#### Sophomores:

Luke Ankeny  
Tony Dohren  
Mike Faber  
Jon Larson  
Aaron Newkirk  
Kyle Valentine

### Freshmen:

Shane Bentley  
Tim Buechse  
Ben Kroon  
Andy Rosen  
David Swanson  
Austin Taylor

# Luke Ankeny



44

Post, So., 6-4, 215

Homedale, Idaho

Homedale HS

**GEORGE FOX:** Strong around basket...Quicker and stronger than last season...George Fox track sprinter...Team's fastest player endline to endline...**1995-96:** Came off bench at the post position.

**HOMEDALE HS:** Coached by Randy Polter...**1994-95:** All-Western Idaho Conference first team...13.0 ppg, 8.0 rpg...**1993-94:** All-Western Idaho Conference second team ...Finished second in 100-meters at state track meet...High school letter-winner in football and cross country.

**PERSONAL:** Born 1-29-77...Son of Dennis and Susan Ankeny ...Liberal arts major...Parents are both George Fox alumni.

**MARK'S REMARKS:** "Luke is an extremely dedicated player and is one of the hardest working Bruins on the team. He has a nice 10-foot jump shot and scores well around the basket. He will get playing time at one of the post positions."

Year	G	FG	FG%	3-Pt.	3-Pt.%	FT	FT%	Rb.	Avg.	Ast.	Pts.	Avg.
95-96	17	29	.222	00	.000	2/2	1.00	13	0.8	1	6	.4

## THE LUKE ANKENY FILE

**Sports teams I followed when I was younger were:** L.A. Lakers, San Francisco 49ers, New York Giants

**The most memorable athletic event I participated in was:** Homecoming last year

**Hobbies:** Fishing, backpacking, wrestling Crawford, sleeping

**Most influential person in my life:** Mom and Dad

**Person most admired in my life:** Billy Joe Jackson — friend

**Best book ever read:** The Bible, *Cat in the Hat*

**Favorite movie:** *Hoosiers*, *Star Wars*

**Favorite comic strip:** *Peanuts*

**If I could play another sport at George Fox it would be:** Team handball **Because:** You get to hit someone — physical game.

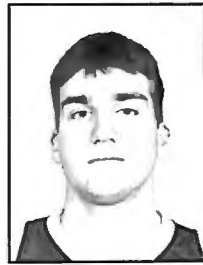
**Game/Opponent most looked forward to this season:** Our next game, Albertson tournament

**Why I came to George Fox:** Play basketball, run track, have fun, be in a Christian atmosphere

**Best thing about this year's team:** Good attitude

**If I could change one thing about college basketball it would be:** Everyone would have shaved heads.

# Shane Bentley



41

Post, Fr., 6-5, 230

Stevenson, Wash.

Stevenson HS

**GEORGE FOX:** Potential starter...Good around the basket...Hard worker.

**STEVENSON HS:** Coached by Richard Hanley...**1995-96:** All-Tri-Co league...Team MVP...Washington Interscholastic Basketball Coaches Association All-Star...Averaged 18.4 ppg, 10.2 rpg...Student body president...**1994-95:** Second team All-Tri-Co League...Team MVP...Averaged 15.6 ppg, 9.9 rpg...**1993-94:** Honorable mention All-Tri-Co League...Averaged 11.3 ppg, 9.4 rpg.

**PERSONAL:** Born 4-7-78...Son of Bill and Lorna Bentley...Elementary education major.

**MARK'S REMARKS:** "Shane could start at center. At 6-5, he's good around the basket and a solid rebounder. We need him to play good post defense and play without fouling this year. Shane needs to develop quickly because we need to replace Jared Gallop in the starting line-up."

## THE SHANE BENTLEY FILE

**Sports teams I followed when I was younger were:** Portland Trail Blazers and any college team

**The most memorable athletic event I participated in was:** Beating Tenino HS in a district playoff game in overtime. It was a big upset.

**Hobbies:** Paintball

**Most influential person in my life:** My parents

**Person most admired in my life:** My father

**Best book ever read:** *The Firm* by John Grisham

**Favorite movie:** *Dances With Wolves*

**Favorite comic strip:** *Calvin and Hobbes*

**If I could play another sport at George Fox it would be:** Track **Because:** I've participated in it before and I liked it.

**Game/Opponent most looked forward to this season:** Willamette University

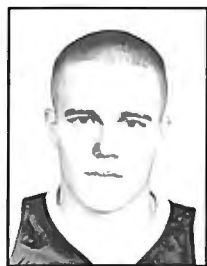
**Why I came to George Fox:** Liked the campus and Christian atmosphere

**Best thing about this year's team:** Team unity

**If I could change one thing about college basketball it would be:** Change the shot clock back to 45 seconds



# Tim Buechsel



40

Wing, Fr., 6-4, 200  
Wettenberg, Germany  
Immanuel HS,  
(Reedley, Calif.)

**GEORGE FOX:** Good post defender...Hard worker... Solid rebounder... Working to improve left hand.

**IMMANUEL HS:** Coached by John Thiesen...**1995-96:** First team All-East Sierra League...Team MVP...Team captain...Most Inspirational...Averaged 11.6 ppg, 8.5 rpg.

**TSV KROFDORF GLEIBERG:** Coached by Ralf Neuman...**1994-95:** 30.0 ppg...Team advanced to state championships ...Undeclared in league (14-0).

**PERSONAL:** Born 2-28-78...Son of Heinz and Mary Buechsel... Biology major.

**MARK'S REMARKS:** "Tim works extremely hard in practice and really wants to be a player. He's one of our best post defenders and a pretty good scorer around the basket."

## THE TIM BUECHSEL FILE

**Sports teams I followed when I was younger were:**  
Chicago Bulls, MTV Giessen

**The most memorable athletic event I participated in was:** All-star game

**Hobbies:** Basketball

**Most influential person in my life:** Father

**Person most admired in my life:** Father

**Best book ever read:**  
*Championship Living* by A.C. Green

**Favorite movie:** *Hoosiers*

**Favorite comic strip:** *Flsterix & Obelix*

**If I could play another sport at George Fox it would be:**  
Soccer **Because:** I like it.

**Game/Opponent most looked forward to this season:** Every game

**Why I came to George Fox:**  
I wanted to go to a private college.

**Best thing about this year's team:** The people on the team

# Tony Dohren



32

Wing, So. 6-4, 190  
Medford, Ore.  
St. Mary's HS

**GEORGE FOX:** Ineligible for first seven games because of too few credits...Intelligent player...Good defender and passer.

**SOUTHERN OREGON STATE COLLEGE:** **1995-96:** Did not play.

**COLLEGE OF THE SISKIYOU:** **1994-95:** Averaged 1.0 ppg, 1.0 rpg.

**ST. MARY'S HS:** Coached by Randy Shiply...**1993-94:** Team captain...All-Big Fir League first team...MVP of Gold Beach Tournament...Averaged 22.0 ppg, 8.0 rpg, 6.0 apg...**1992-93:** All-Big Fir League first team...Team won state championship (25-0).

**PERSONAL:** Born 7-7-75...Son of Dave and Judy Dohren... Business and economics major.

**MARK'S REMARKS:** "After Tony becomes eligible, he should fight for a starting position at the small forward position. He's a very good passer, defender and really understands the game."

## THE TONY DOHREN FILE

**Sports teams I followed when I was younger were:**  
Nebraska Cornhuskers

**The most memorable athletic event I participated in was:** High school state championship game

**Hobbies:** Tennis

**Most influential person in my life:** My parents

**Best book ever read:** *The Grapes of Wrath*

**Favorite movie:** *Fletch*

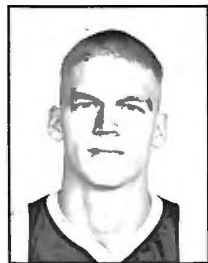
**If I could play another sport at George Fox it would be:**  
Baseball

**Game/Opponent most looked forward to this season:** The next game

**Why I came to George Fox:**  
Aaron Newkirk

**Best thing about this years team:** All of our different personalities

# Mike Faber



42

Wing, So., 6-8, 200  
Salem, Ore.  
Salem Academy

**GEORGE FOX:** Top returning shot blocker in conference... (1.75 per game)...Returns with increased strength and confidence...Good shooting touch...Seven-foot wingspan... Passes well...**1995-96:** Scored season-high 21 points vs. Linfield College (Feb. 17)...Season-high 10 rebounds against Southern Oregon (Nov. 21)...Best 3-point percentage on team, .462 (18-39)...Best field goal percentage on team, .509 (59-116).

**SALEM ACADEMY:** Coached by Dave Bullis...**1994-95:** Oregon Class 2A Player of the Year...All-Tri-River League first team ...Statesman Journal All-Region team...20.9 ppg, 8.2 rpg...Team finished third in state...Set seven school records: scoring - game 41 points, season 587 points, career 993 points; blocked shots - game 10, season 117, career 182; free throw percentage - game 11-11 (.100)...**1993-94:** All-Tri-River League second team...11.4 ppg, 6.5 rpg.

**PERSONAL:** Born 5-25-77...Son of Leonard and Rena Faber... Computer science major...Name pronunciation: FAY-ber.

**MARK'S REMARKS:** "Mike is set to have an outstanding sophomore season. He is a terrific shooter from the perimeter and has improved his inside scoring. Mike is our go-to guy and should be our leading scorer. Mike has the potential to be all-conference this year and All-American in the near future."

Year	G	FG	FG%	3-Pt.	3-Pt.%	FT	FT%	Rb.	Avg.	Ast.	Pts.	Avg.
95-96	24	59/116	.509	18/39	.462	25/40	.625	95	4.0	35	161	6.7

## THE MIKE FABER FILE

**Sports teams I followed when I was younger were:** Portland Trail Blazers, Chicago Bulls, San Francisco 49ers

**The most memorable athletic event I participated in was:** 1995 high school state tournament

**Hobbies:** Driving, eating, dancing

**Most influential person in my life:** Jon Williams (roommate)

**Best book ever read:** *Where's Waldo*

**Favorite movie:** *12 Monkeys*, *Wizard of Oz*

**Favorite comic strip:** *Far Side*

**If I could play another sport at George Fox it would be:** Women's basketball

**Because:** I can't play any other sports.

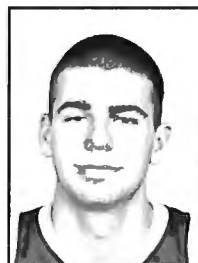
**Game/Opponent most looked forward to this season:** Willamette University

**Why I came to George Fox:** To play ball

**Best thing about this years team:** Intelligent

**If I could change one thing about college basketball it would be:** Introduce the 6-point line

# Jared Gallop



33

Post, Jr., 6-7, 215  
Roseburg, Ore.  
Roseburg HS

**GEORGE FOX:** Team's leading scorer and rebounder will sit out 1996-97 season with back injury...**1995-96:** Twice named conference player of week...Northwest Conference second team...Fifth in NCIC in scoring (18.0)...Seventh in NCIC in rebounding...Grabbed season-high 14 rebounds twice...**1994-95:** Cascade Conference Freshman of the Year...Led George Fox in scoring three times, in rebounding five times...Named team's Most Improved by vote of teammates and coaches.

**ROSEBURG HS:** Coached by Mike Pardon...**1993-94:** USA Today Honorable Mention selection...McDonald's All-American... Oregon 4A all-state second team...Oregon Basketball Congress International team member...MVP of 4A State team in Oregon All-Star Boys Basketball Series...Southern Oregon Conference Player of the Year...Averaged 20.9 ppg, 8.5 rpg and 3.0 apg ...Led team to 18-6 record, best in more than a decade... Lettered in football and track...**1992-93:** First team all-Southern Oregon Conference...Team MVP...Averaged 15.5 ppg, 6 rpg, 2 apg.

**PERSONAL:** Born 1-10-76...Son of Richard and Rhonda Russell...Liberal arts major.

**MARK'S REMARKS:** "Jared is redshirting this season because of a bad back. He will be sorely missed because he is arguably the best returning player in the conference. We were expecting 20 points, 10 rebounds a game from Jared, so those will be big holes to fill. He has All-American potential in the next few years."

Year	G	FG	FG%	3-Pt.	3-Pt.%	FT	FT%	Rb.	Avg.	Ast.	Pts.	Avg.
94-95	31	129/273	.473	15/58	.259	41/61	.672	136	4.4	31	314	10.1
95-96	24	165/331	.498	16/52	.308	85/111	.766	161	6.7	35	431	18.0
Career	55	294/604	.487	31/110	.282	126/172	.733	297	5.4	66	745	13.5

## THE JARED GALLOP FILE

**Sports teams I followed when I was younger were:** Dallas Cowboys, Chicago Bulls

**The most memorable athletic event I participated in was:** Lewis & Clark game at home my sophomore year

**Hobbies:** Lifting weights, hanging out with family and friends

**Most influential person in my life:** Parents

**Best book ever read:** *See You at the Top* by Zig Zigler

**Favorite movie:** *Hoosiers*

**Game/Opponent most looked forward to this season:** Lewis & Clark College, PLU

**Why I came to George Fox:** Basketball program

**Best thing about this year's team:** Hard working

# James Homolka



21

Wing, Sr., 6-0, 155  
Hayden Lake, Idaho  
North Idaho Christian HS

**GEORGE FOX:** Notre Dame has "Rudy," and George Fox basketball has James Homolka...After being cut in 1991, 1992 and 1993, made team each of the last three seasons...Moves well without ball...Good mid-range shooter...**1995-96:** Played in nine games...**1994-95:** Named Most Inspirational by vote of teammates and coaches...Played in 11 games.

**NORTH IDAHO CHRISTIAN HS:** Coached by Chuck Kelly...**1990-91:** All-State honorable mention...All-North Star League...Team captain...Averaged 22 ppg, 10 rpg...Named to Who's Who Among Students in American High Schools...**1989-90:** Averaged 25 ppg, 11 rpg...Team captain...All-North Star League...Top free-throw shooter in Idaho (91 percent).

**PERSONAL:** Born 7-2-73...Son of Charlotte Homolka...Communication/video production major... Name pronunciation: "HOL-mol-ka"...Nickname is "Legend"...The only married player on the team.

**MARK'S REMARKS:** "James understands the game and does a good job in running the offense and taking good shots. He will come off the bench and give us smart play."

Year	G	FG	FG%	3-Pt.	3-Pt. %	FT	FT%	Rb.	Avg.	Ast.	Pts.	Avg.
94-95	11	1/7	.143	0/0	.000	0/0	.000	2	0.2	1	2	0.2
95-96	9	2/5	.400	0/1	.000	0/1	.000	3	0.3	0	4	0.4
Career	20	3/12	.250	0/1	.000	0/1	.000	5	0.3	1	6	0.3

## THE JAMES HOMOLKA FILE

**The most memorable athletic event I participated in was:**

District playoffs vs. Clark Fork HS

**Hobbies:** Playing football, memorizing sports trivia, listening to music

**Most influential person in my life:** My mother, Charlotte Homolka

**Person most admired in my life:** Rev. Bob Schneider, hometown pastor

**Best book ever read:** *Running Tough:* Autobiography of Tony Dorsett

**Favorite movie:** *Star Wars Trilogy*

**Favorite comic strip:** *Calvin and Hobbes*

**If I could play another sport at George Fox it would be:**

Soccer **Because:** I played it in high school.

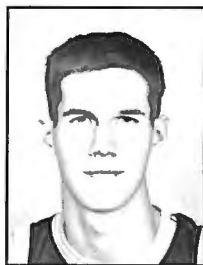
**Game/Opponent most looked forward to this season:** Willamette University

**Why I came to George Fox:** Because of the strong Christian tradition and the friends that I already had here

**Best thing about this years team:** Its ability to focus through adversity

**If I could change one thing about college basketball it would be:** Move the 3-point line back to where it was

# Ben Kroon



34

Wing, Fr., 6-6, 175  
Wasilla, Alaska  
Wasilla HS

**GEORGE FOX:** Potential starter...Solid rebounder...Good medium-range jump shooter and inside scorer...Working to improve defense and strength...Excellent potential.

**WASILLA HS:** Coached by John Schirack...**1995-96:** Alaska Class 4A all-state honorable mention...All-Northern Lights Conference first team...Team captain...Second in state in scoring average (22.8 ppg)...8.6 rpg...**1994-95:** Alaska Class 4A all-state honorable mention...All-Northern Lights Conference first team...Team captain...Second in state in scoring average (21.7)...8.1 rpg.

**PERSONAL:** Born 10-1-77...Son of Larry and Marlene Kroon...Liberal arts major...Graduated 11th in his class...Also lettered in cross country and track...Sixth in state in triple jump...Name rhymes with "phone."

**MARK'S REMARKS:** "Ben plays taller than his 6-6 frame because of his long arms and good jumping ability. He has been surprising in his rebounding abilities in the preseason. He may be our best rebounder. Ben is getting better every day in practice and may start at the small forward position."

## THE BEN KROON FILE

**Sports teams I followed when I was younger were:**

San Francisco 49ers, Portland Trail Blazers

**The most memorable athletic event I participated in was:** High school regional basketball tournament

**Hobbies:** Mountain biking, camping, any sport

**Most influential person in my life:** Dad

**Person most admired in my life:** Dad

**Best book ever read:**

*Lord of the Rings*

**Favorite movie:** *Fletch Lives*

**Favorite comic strip:**

*Calvin and Hobbes*

**If I could play another sport at George Fox it would be:**

Track **Because:** It's fun.

**Game/Opponent most looked forward to this season:** Next game

**Why I came to George Fox:** I wanted to play in a good Christian environment.

**Best thing about this year's team:** Legend (James Homolka)

**If I could change one thing about college basketball it would be:** Smaller lane

# Jon Larson



22

Wing, So., 6-1, 175  
Post Falls, Idaho  
Gonzaga Prep

**GEORGE FOX:** Good 3-point shooter...Plays solid defense...**1994-95:** Attended George Fox but did not play.

**NORTHWEST COLLEGE:** **1995-96:** Played soccer.

**GONZAGA PREP:** Coached by Mike Haugen...**1993-94:** Injured and did not play... **1992-93:** Washington Class 3A all-state honorable mention...All-Greater Spokane League first team...Team captain...18.0 ppg, 5.0 rpg, 4.0 apg.

**PERSONAL:** Born 4-27-76...Son of Jon and Maureen Larson...Business and economics major...Lettered in football.

**MARK'S REMARKS:** "Jon will play the shooting guard this year and come off the bench and give us solid play. He has good 3-point range and is a hard-nosed defender."

## THE JON LARSON FILE

**Sports teams I followed when I was younger were:**  
L.A. Lakers

**The most memorable athletic event I participated in was:** 1993 state football playoffs

**Hobbies:** Reading, skiing, listening to Pink Floyd

**Most influential person in my life:** Colonel Fredrick M. O'Neill (grandfather)

**Person most admired in my life:** My mother, Maureen Larson

**Best book ever read:** *On the Road* by Jack Kerouac

**Favorite movie:** *Pulp Fiction*

**Favorite comic strip:**  
*Far Side*

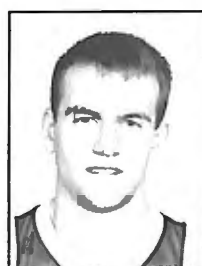
**If I could play another sport at George Fox it would be:**  
Soccer **Because:** All my boys play soccer.

**Game/Opponent most looked forward to this season:** Linfield College

**Why I came to George Fox:**  
To pursue a quality Quaker education

**Best thing about this year's team:** Jared Gallop

# Aaron Newkirk



30

Wing, So., 6-1, 180  
Central Point, Ore.  
Crater HS

**GEORGE FOX:** Starting wing...Good shooter...One of team's best defenders...Intelligent player...**1995-96:** Scored season-high 5 points twice...Season-high 5 rebounds versus Pacific University (12-19)...Averaged seven minutes a game... **1994-95:** Redshirted season.

**CRATER HS:** Coached by Craig Siebenlist...**1993-94:** Oregon 4A all-state honorable mention...Southern Oregon Conference first team...Averaged 18.4 ppg and 7.4 apg...**1992-93:** Southern Oregon Conference second team...Averaged 15.9 ppg, 3.6 apg.

**PERSONAL:** Born 12-31-75...Son of Steve and Linda Newkirk...History major.

**MARK'S REMARKS:** "Aaron should step in and take Nick Haij's position at shooting guard. Aaron is a tough defender, good passer and excellent shooter. Aaron takes high-percentage shots and knocks them down. We need him to be a double-figure scorer this year."

Year	G	FG	FG%	3-Pt.	3-Pt.%	FT	FT%	Rb.	Avg.	Ast.	Pts.	Avg.
95-96	21	8/24	.333	1/5	.200	5/12	.417	29	1.4	14	22	1.0

## THE AARON NEWKIRK FILE

**Sports teams I followed when I was younger were:**  
Toronto Raptors

**The most memorable athletic event I participated in was:** High school state sub-tournament game vs. South Eugene

**Hobbies:** Spelunking and picking wild flowers with Kyle Valentine

**Most influential person in my life:** Mom

**Person most admired in my life:** Dad

**Best book ever read:** *The Bible*

**Favorite movie:** *Ride The High Country*

**Favorite comic strip:**  
*Far Side*

**If I could play another sport at George Fox it would be:**  
Soccer **Because:** I played it in high school.

**Game/Opponent most looked forward to this season:** Linfield College

**Why I came to George Fox:**  
Christ-centered university

**Best thing about this year's team:** Legend (James Homolka) is back.

**If I could change one thing about college basketball it would be:** Nothing

# Andy Rosen



14

Point Guard, Fr., 5-9, 140  
Newberg, Ore.  
Newberg HS

**GEORGE FOX:** Extremely hard working on defense... Working to improve shooting ...One of two Newberg High School graduates on team (Austin Taylor the other).

**NEWBERG HS:** Coached by Gregg Griffin...**1995-96:** 65 steals, 2.5 ppg, 2.0 rpg, 4.1 apg....Team won Pacific-7 title.

**PERSONAL:** Born 10-8-77...Son of Steve and Bev Rosen... Communication arts major...Also lettered in track and cross country...Younger brother of George Fox track athlete Curt Rosen.

**MARK'S REMARKS:** "Andy works very hard in practice. He has tremendous determination and hustle. He will be used coming off the bench for his defensive capabilities"

## THE ANDY ROSEN FILE

**Sports teams I followed when I was younger were:** Portland Trail Blazers, San Francisco 49ers, New York Yankees

**The most memorable athletic event I participated in was:** State basketball tournament my senior year

**Hobbies:** Golfing, water skiing

**Most influential persons in my life:** My parents

**Person most admired in my life:** Pistol Pete Maravich

**Best book ever read:** *Pistol Pete*

**Favorite movie:** *The Fugitive*

**Favorite comic strip:** *Garfield*

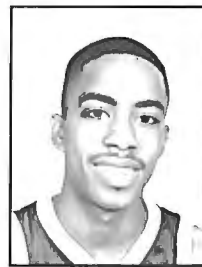
**If I could play another sport at George Fox it would be:** Track **Because:** I enjoy running.

**Game/Opponent most looked forward to this season:** Linfield College

**Why I came to George Fox:** Good academics

**Best thing about this year's team:** Good individuals

# David Swanson



20

Point Guard, Fr., 6-0, 130  
Montclair, Calif.  
Montclair HS

**GEORGE FOX:** Has improved outside shot...**1995-96:** Redshirted season.

**MONTCLAIR HS:** Coached by Dave Kleckner...**1994-95:** 14.5 ppg, 3.5 rpg, 5.0 apg as point guard.

**PERSONAL:** Born 7-26-76...Son of David and Carmen Swanson...Communication/video production major...Parents are George Fox alumni.

**MARK'S REMARKS:** "David is our back-up point guard in practice. He does a good job of running the second team. He will be used coming off the bench in certain situations."

## THE DAVID SWANSON FILE

**Sports teams I followed when I was younger were:** L.A. Lakers, Boston Celtics

**The most memorable athletic event I participated in was:** My basketball team's CIF championship game

**Hobbies:** Listening to music and writing

**Most influential person in my life:** My mother

**Person most admired in my life:** My mother

**Best book ever read:** *Native Son*

**Favorite movie:** *Boomerang*

**If I could play another sport at George Fox it would be:** Track **Because:** I did it in high school.

**Why I came to George Fox:** A great education

**Best thing about this year's team:** We are closer.

**If I could change one thing about college basketball it would be:** Play more games



# Austin Taylor



24

Wing, Fr., 6-2, 185  
Newberg, Ore.  
Newberg HS

**GEORGE FOX:** Left-handed...Streaky shooter...One of two Newberg High School graduates on team (Andy Rosen the other).

**NEWBERG HS:** Coached by Gregg Griffin...**1995-96:** All-Pacific-7 Conference first team...13.0 ppg, 6.5 ppg...Team won Pacific-7 Conference title...**1994-95:** All-Pacific-7 Conference second team...10.0 ppg, 5.0 rpg.

**PERSONAL:** Born 8-9-77...Son of Ron and Debbie Taylor... Liberal arts major.

**MARK'S REMARKS:** "Austin is a player who has no fear. He can come off the bench and knock down jumpers. He will give us scoring coming off the bench. He steps on the floor firing."

## THE AUSTIN TAYLOR FILE

**Sports teams I followed when I was younger were:**  
L.A. Lakers, Green Bay Packers

**The most memorable athletic event I participated in was:** High school state basketball tournament

**Hobbies:** Basketball, baseball, football

**Most influential person in my life:** Parents

**Person most admired in my life:** My mom

**Best book ever read:** Bible

**Favorite movie:** *Hoosiers*

**Favorite comic strip:**  
*Far Side*

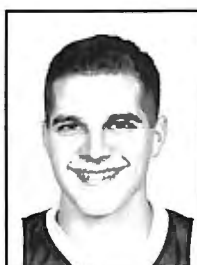
**If I could play another sport at George Fox it would be:**  
Baseball **Because:** There isn't a football team.

**Game/Opponent most looked forward to this season:** Homecoming game

**Why I came to George Fox:**  
School

**Best thing about this year's team:** Full team effort

# Kyle Valentine



12

Point Guard, So., 5-10, 160  
West Linn, Ore.  
West Linn HS

**GEORGE FOX:** Starting point guard...Fifth West Linn HS grad to join George Fox squad since 1989...Quickest player on team...Sound ball-handler...Improved outside shooting...Great defender with quick hands...**1995-96:** Scored season-high 18 points versus PLU (Feb. 12)...Season-high 11 assists versus Concordia (Jan. 23)...Season-high 8 rebounds versus Concordia (Jan. 23)...**1994-95:** Redshirted season.

**WEST LINN HS:** Coached by father Bart Valentine...**1993-94:** Oregon Fellowship of Christian Athletes Athlete of the Year finalist...Averaged 11.0 ppg, 7.5 apg and 4.3 spg.

**PERSONAL:** Born 5-5-76...Son of Bart and Becky Valentine... Biology major...Father has been good friends with Mark Vernon since they attended college together in Seattle area 20 years ago.

**MARK'S REMARKS:** "Kyle has added 10 pounds of muscle and improved his perimeter shooting. He may be the best defensive guard in the conference. He has extremely quick feet and hands, and he sets the tone for our defense. Kyle needs to be a double-figure scorer, but more importantly, will run the team and distribute the ball in the offense. I wouldn't trade Kyle for any point guard in our conference."

Year	G	FG	FG%	3-Pt.	3-Pt.%	FT	FT%	Rb.	Avg.	Ast.	Pts.	Avg.
95-96	24	47/110	.427	15/45	.333	69/90	.767	47	2.0	74	178	7.4

## THE KYLE VALENTINE FILE

**Sports teams I followed when I was younger were:**  
Boston Celtics

**The most memorable athletic event I participated in was:** Homecoming last year against Linfield

**Hobbies:** Spelunking and picking wild flowers with Aaron Newkirk

**Most influential person in my life:** Parents

**Person most admired in my life:** Bart Valentine (father and high school coach)

**Best book ever read:**  
*Lonesome Dove*

**Favorite movie:** *Ride the High Country*

**Favorite comic strip:**  
*Far Side*

**If I could play another sport at George Fox it would be:**  
Soccer **Because:** I love the sport.

**Game/Opponent most looked forward to this season:**  
Willamette University

**Why I came to George Fox:**  
A chance to play in a good program in a Christian environment

**Best thing about this year's team:** Unselfishness

**If I could change one thing about college basketball it would be:** Nothing



**MARK VERNON** enters his 15th season directing the George Fox men's basketball team.

It is a tenure that has produced the most coaching wins in team history. His teams have ranked as

high as No. 2 in the national NAIA Division II poll and have made two trips to NAIA national tournaments in the '90s. Six of the seven 20-win seasons in George Fox history have come under his guidance.

Vernon became one of the nation's youngest coaches to surpass the 250-career win milestone, eclipsing it at the age of 40. His 14-year record is 274-164. His career winning percentage has been ranked as high as fifth among active Division II coaches.

Vernon's teams have produced two NBA draft picks, four NAIA All-Americans and one NAIA All-American Scholar-Athlete.

His efforts have not gone unnoticed. In 1985 he was the youngest coach in NAIA District 2 when he was named men's basketball district Coach of the Year for the first time. In 1987 and 1991 he received the same honor. He was named National Christian College Athletic Association National Coach of the Year in 1987.

Vernon, 43, has his entire collegiate coaching career at George Fox, but the tie with the Bruins is longer. He came in 1975 as a student and basketball player, transferring from Seattle's Highline Community College, where he received both Best Defense and Hustle awards. While at West Seattle High School, he was named Outstanding Athlete of the Year as a senior.

As a George Fox guard, he established what was then the Bruins' highest career assist average (3.9). He was named Most Inspirational Player by his teammates his senior year, a year the Bruins were 20-9. In his two years in a George Fox uniform, the Bruins were 39-17.

A 1977 graduate, Vernon was named George Fox's Outstanding Physical Education Major and Outstanding

Young Person in Teacher Education. He remained with Bruin basketball as an assistant for three years (1977-78, '79-80 and '81-82) while working toward a 1982 master's degree in physical education at Linfield College.

In the fall of 1981, he joined the George Fox physical education faculty as volleyball coach and women's tennis coach. Vernon currently teaches physical education classes in addition to his coaching.

He became head coach in 1982 after a nationwide search that began with 70 names.

Vernon and his wife, Denise, were married in 1981 and have three sons: Brett, 5; Brady 3; and Barry, 1.

## GEORGE FOX COACHING RECORDS

Season	Coach	Win/Loss	%
1965-66	Terry Haskell	9-19	.321
1966-67	Terry Haskell	7-18	.240
1967-68	Terry Haskell	6-20	.231
1968-69	Dave Berg	4-22	.154
1969-70	Dave Berg	3-23	.115
1970-71	Lorin Miller	15-13	.533
1971-72	Lorin Miller	13-12	.520
1972-73	Lorin Miller	16-15	.516
1973-74	Lorin Miller	19-11	.633
1974-75	Lorin Miller	17-13	.567
1975-76	Lorin Miller	19-8	.704
1976-77	Sam Willard	20-9	.690
1977-78	Sam Willard	15-14	.517
1978-79	Sam Willard	9-20	.310
1979-80	Sam Willard	18-12	.600
1980-81	Sam Willard	15-13	.536
1981-82	Sam Willard	12-21	.364
1982-83	Mark Vernon	15-16	.484
1983-84	Mark Vernon	17-12	.586
1984-85	Mark Vernon	27-7	.794
1985-86	Mark Vernon	21-10	.677
1986-87	Mark Vernon	27-6	.818
1987-88	Mark Vernon	17-16	.515
1988-89	Mark Vernon	19-12	.613
1989-90	Mark Vernon	29-5	.853
1990-91	Mark Vernon	24-6	.800
1991-92	Mark Vernon	24-11	.686
1992-93	Mark Vernon	14-15	.483
1993-94	Mark Vernon	17-16	.515
1994-95	Mark Vernon	12-19	.387
1995-96	Mark Vernon	11-13	.458

Coach	Yrs.	W/L	%
Terry Haskell	1965-68	22-57	.278
Dave Berg	1968-70	7-45	.129
Lorin Miller	1970-76	99-72	.579
Sam Willard	1976-82	89-89	.500
Mark Vernon	1982-96	274-164	.626

## Q & A WITH MARK VERNON

**Q. Your teams average more than 19 wins a season, are playoff regulars, and your career record at George Fox is 274-164. What reasons can you give for that kind of success?**

**Mark:** "I believe we have had talented players over the years. But maybe just as important as talent, we have had players with character and heart. I have been fortunate to have coached very good players as well as very good people."

**Q. Describe your coaching philosophies. How do you coach your teams to play?**

**Mark:** "First and foremost, we want our team to be just that—a team—with team goals placed well above any personal goals players may have. We want to play hard, smart and together every time we step on the floor. I really believe the game is for the players and the fans, and so I believe in playing an up-tempo game that is enjoyable for everyone. Winning is fun no matter what, but winning and putting a lot of points on the board is even more fun."

**Q. What do you enjoy most about coaching?**

**Mark:** "I enjoy my players the most. The everyday interaction that goes on between my players and myself makes my job fun. I also like the camaraderie with my fellow coaches. We compete hard against each other during the season but are friends otherwise. I would be remiss if I didn't mention I love the competition. Anyone who knows me knows I compete at everything I do. I have the best job in the world. I really can't think of anything else I would like to do and still get paid."

**Q. You are entering your 15th year as George Fox head coach. What is it about the University that has kept you here all these years?**

**Mark:** "I believe in the values and Christian education that students receive at George Fox. I believed in the University enough to come as a student-athlete, and I still believe in it after 14 years of coaching. George Fox stands up for its convictions, and I like being associated with a college that has integrity and a Christ-centered foundation."



**AARON DOWNS**

moves from team captain to assistant coach this year.

A part-time starter last season, Downs was one of the Bruins'

emotional leaders and was named Most Inspirational by a vote of his teammates. He played four seasons with George Fox at the point guard and wing positions and, during his final two seasons, finished among the conference leaders in steals.

Downs graduated *magna cum laude* in 1996 with a social studies teaching degree. He was chosen as the outstanding senior student in his major and was named to "Who's Who Among Students in American Universities and Colleges." He was one of the founders of the campus Fellowship of Christian Athletes program.

He currently is enrolled in George Fox's Master of Arts in Teaching program.



**CRAIG TAYLOR** is in his ninth year as George Fox University Athletic Director, but he has been associated with the Bruins for 23 years

as player, coach and professor.

Taylor, 45, came to George Fox in 1971 as a junior forward for the men's basketball team. In 1972-73, he helped the Bruins to their first-ever NAIA District 2 title.

Taylor graduated from George Fox in 1974, named both Outstanding Man in Teacher Education and Outstanding Physical Education Major. He received a Master of

Science degree in education from Linfield College in 1975. While enrolled in graduate courses, he was a George Fox residence hall director.

From 1976 through 1979, Taylor was the Bruin baseball coach while also serving as assistant basketball coach. He worked at a sporting goods retailing firm from 1979-81.

The A.D. was the coach of the women's basketball team from 1981-93, producing a 162-155 record. He also coached George Fox softball from 1981-88 and again in 1990. His teams compiled a 77-99-1 record, and in 1985 he was named NAIA District 2 Coach of the Year.

At George Fox, the athletic director is responsible for athletic department functions, including eligibility and compliance with George Fox, conference, NAIA and NCAA regulations, budgeting, and department and sports center management.

Taylor has three children: Leah, 22, Bree, 17, and Casey, 7. Taylor and his wife, Kathy, live in McMinnville.



**HAL ADRIAN**

became Associate Director of Athletics at George Fox in 1994. In that position, he is responsible for the Bruin Club

and general fund raising, as well as special projects including the George Fox Sports Hall of Fame and sports banquet.

A 1956 graduate of Lewis & Clark College, Adrian taught and coached in the Beaverton School District until 1961 when he joined North Pacific

Insurance. In 1994, he retired as Vice President of Human Resources. For 40 years he has been involved in church music leadership, chairing the 1992 Billy Graham Crusade music committee. Adrian also has been active in United Way leadership.

He and his wife Audrey have three sons: Jay, Greg, and Dave, who currently is George Fox's Vice President for Development.



**ROB FELTON** is in his fifth year as Sports Information Director for George Fox's 13 athletic teams. A 1992

George Fox graduate with a degree in communication arts, Felton was a sports information student assistant for three years.

The George Fox Sports Information Office has produced 34 national award-winning publications in the last 15 years. Most recently, the 1995-96 men's and women's basketball media guides each earned top-10 finishes in a national contest sponsored by the College Sports Information Directors of America.

Felton, 26, also has additional responsibilities as Assistant Director of Public Information.

A *magna cum laude* graduate, he was named Outstanding Student in Communication Arts and to "Who's Who Among Students in American Colleges and Universities." He was sports editor for the student newspaper, *The Crescent*, for two years and editor as a sophomore.



*George Fox's No. 1 fan Mike Wirta*



**MIKE WIRTA** is in his 26th year as George Fox basketball statistician. Called "Biggs" by his friends, Wirta is a 1974 George Fox

graduate and one of the most loyal Bruin fans. At the end of the 1995-96 season, he had kept stats for 322 straight George Fox men's basketball contests and 327 in a row at home. The last home game he missed was in 1972. A member of the University's plant services staff, Wirta, 47, has the upkeep of the sports center as his major responsibility. He devotes many volunteer hours to compiling statistics and records for the players and teams recorded in this book.

In 1988 the University's alumni association named Wirta its Volunteer of the Year, just the second person to receive the designation. In 1994 he received an NAIA District 2 Meritorious Service Award.



**DALE ISAAK** joined the George Fox staff in 1995 as head trainer and assistant professor in the Health and Human Performance Depart-

ment. He previously was the head athletic trainer for Hopkins High School in Minnetonka, Minn., and athletic trainer for the Institute for Athletic Medicine in Minneapolis. Isaak is a 1990 graduate of Willamette University. He holds a Master of Science degree in physical education/athletic training from Indiana State University and a Master of Education degree in physical education from the University of Minnesota. He and his wife, Marin, live in Wilsonville.



**BYRON SHENK** serves as George Fox's assistant trainer, but that's just one of the many duties he's handled since coming to the

University in 1990. He serves as chairperson of the Department of Health and Human Performance, where he also teaches as associate professor. Shenk also has coached George Fox's six-year-old varsity women's soccer team from infancy.

In 1992 he was named NAIA District 2 Coach of the Year.

The same year, he earned a national meritorious service award from the National Christian College Athletic Association for previous service and leadership.

Shenk has an undergraduate degree from Goshen College, a master's from the University of Oregon and a doctorate in education from the University of Virginia.

Shenk and his wife, Ina, were married on Dec. 17, 1995, and live in McMinnville, where he is active in the Mennonite church.

## SPORTS INFORMATION ASSISTANTS

Hope Baldwin, Ryan Chaney, Scott Wade

## SCOREKEEPER

Don Millage

## SCOREBOARD

Bob Stewart, Larry Herrick, Jason Herrick, Angie Jordan, Don Staples

## PUBLIC ADDRESS

Jim Jackson

## BALL BOYS

Jesse Lamm, Devon Powell, Cole Rogers

## BRUIN HOSTS/HOSTESSES

The Bruin Hosts and Hostesses are George Fox University's official greeters for home basketball games. The eight volunteers are in charge of hospitality in Wheeler Sports Center. Members of the 23-year-old organization welcome fans; take tickets; distribute programs; provide news media, stats crews and other special guests with refreshments; and assist at the postseason basketball awards dessert.

*(left to right)*

**Front Row:** Jennifer Low, Sherilyn Swartwood, Ryan Dougherty, Natasha Jabusch, Tiffany Currier

**Back Row:** Noelle Villaruel, Jess Colvin, Mike Hampton, Brian Wilson (not pictured: Michelle Tompkins)



## BRUIN RALLY SQUAD

*(left to right)*

**Front Row:** Amanda Boone, Amber Carroll, Carmen Anderson, Tara Herrmann, Laura Plunkett

**Back Row:** Barbara Brewer, Toni Horrocks, Holly Brown, coach Melinda Gunther



## BRUIN PEP BAND

*(left to right)*

**Front Row:** Carrie Sutton, Desiree Somner, Maggie Outwater, Paula Williams, Katie Groeneveld

**Middle Row:** Heather McBride, Rebecca Bailey, Beth Kellogg, Tamara Spiess, Brian Stuck

**Back Row:** Joe Notter, Jake Coleman, Troy Roberts, Micah Pritchard, Jason Schwanz

**Not Pictured:** Brandi Bamforth, Ben Baarspul, Tina Davis, John Galvin, Carianne Jeppesen, Janna Kingery, Brennan Koch, Janna Kropf, Ryan Lapour, Johnathan Lewis, Angela Pascua, Angela Powell, Shane Pilo, Rachel Sutherland, Andy Mills





# ALL-TIME GEORGE FOX NAIA ROSTER

## A

ACKERMAN, Tom - '68-72  
ADAMS, Ed - '69-70  
ADRIAN, Dave - '75-78 / '79-80  
ADRIAN, Tim - '78-79  
ALANIZ, Juan - '78-79  
ALMQUIST, Paul - '80-83  
ALTENEDER, Dave - '65-69  
ANDERSON, Kris - '81-82  
ANDREWS, Ben - '66-69  
ANKENY, Denny - '67-68  
ANKENY, Luke - '95-96  
ARONSON, Phil - '79-80  
AUDISS, Scott - '75-77  
AUSTIN, Lon - '74-75

## B

BALL, Steve - '93-94  
BARKDULL, Brian - '76-77 / '80-83  
BARNHART, Phil - '77-81  
BEDDINGFIELD, Jeremy - '95-96  
BEEBE, Gayle - '77-78  
BEEBE, Terry - '75-76  
BEMORE, Terry - '74-75  
BERG, Gary - '72-73  
BIEKER, Jeff - '81-82  
BLACKMAR, Gary - '65-69  
BLAKE, Jim - '72-74  
BLETSCHER, Tim - '74-75  
BOARDMAN, John - '75-76  
BOLT, Greg - '83-85  
BOUTIN, Jamie - '92-94  
BRASE, Tom - '79-80  
BREWER, Mike - '79-81  
BRONLEWE, Tom - '70-72  
BURGESS, Kirk - '76-78  
BURROWS, Don - '71-73

## C

CARTER, Kennie - '80-81  
CASEY, Pat - '87-89  
CHENAULT, Gary - '76-79  
CORBUS, Dan - '91-93  
COZENS, Paul - '74-78  
CRAMER, Mark - '84-85  
CRAVEN, Larry - '65-69  
CURTIS, Roger - '70-72

## D

DAHLIN, Jon - '93-94  
DAVIDSON, Mike - '92-93  
DeMAIN, Gary - '78-79  
DICK, Brian - '77-78  
DITTUS, Del - '71-74  
DOWNS, Aaron - '92-96  
DUNN, Randy - '81-84

## E

ERICKSON, Todd - '89-91

## F

FABER, Mike - '95-96  
FARMER, Todd - '83-84  
FERGUSON, Cal - '65-69  
FIELDS, Ed - '70-73  
FIELDS, Lorin - '92-93  
FLEMMING, Earl - '79-81

FRIESEN, Wes - '78-79

FULK, Brent - '94-95

## G

GALLOP, Jared - '94-96  
GARD, Steve - '91-92  
GARDEA, Rick - '92-93 / '94-95  
GOOD, Cliff - '68-70  
GREENMAN, Ken - '71-73  
GRIFFEN, Gregg - '75-79  
GRIFFIN, Ralph - '65-66

## H

HADLOCK, Bob - '68-69  
HAGEN, Jon - '88-92  
HAGEN, Tim - '88-90  
HAJJ, Nick - '92-96  
HARDIE, Tim - '75-77  
HARRINGTON, Dustin - '92-94  
HARRIS, Tim - '88-92  
HARRISON, Dale - '69-70  
HARRISON, Les - '84-86  
HARTENSTEIN, Grant - '92-96  
HEIDE, Ron - '65-67  
HENRY, Irsie - '76-78  
HEROLD, Mark - '91-93  
HERRICK, Larry - '68-72  
HEWITT, Tom - '73-77  
HOFFMAN, Jeff - '90-92  
HOLMES, Troy - '94-95  
HOLTON, John - '67-69  
HOMOLKA, James - '94-96  
HUTCHINSON, Lauri - '73-75  
HYDE, Vern - '68-70

## I

IBARRA, Sammy - '70-73  
IVERSON, Scott - '82-83

## J

JACOBSON, Tim - '87-90  
JOHNSON, Brent - '93-94  
JOHNSON, Ken - '68-70  
JOHNSON, Scott - '83-84  
JOHNSON, Shane - '89-90  
JURY, Larry - '83-85

## K

KETELSEN, Tom - '83-85  
KIMBERLY, Perry - '65-69  
KIMBROUGH, Curtis - '83-87  
KLIEWER, Walt - '69-72  
KOSER, Norm - '69-72

## L

LAUGHLAND, Bob - '75-79  
LAUTENBACH, Eric - '84-88  
LaVEINE, Andy - '88-89  
LAWSON, Mark - '73-74  
LEE, David - '84-86  
LIGHTFOOT, Mike - '83-84  
LINMAN, Nate - '91-92 / '93-94  
LIVINGSTON, Mike - '65-68  
LOE, Jeff - '79-80  
LOEWEN, Gordy - '68-72  
LONG, Kevin - '95-96  
LONG, Toby - '85-87  
LOWE, Bob - '82-83

## M

MacARTHUR, Morgan - '93-94  
MADISON, Danny - '81-82  
MAGEE, Bruce - '69-70  
MARIANI, Marc - '80-82  
MARLOW, Matt - '67-68  
MARTIN, Brian - '89-91  
MARTIN, Rich - '85-87  
MAUERMANN, Dave - '81-83  
McDONALD, Dave - '67-68  
McGEE, Bruce - '68-69  
McHUGH, Pete - '66-68  
McINTOSH, Jim - '69-72  
McNELLY, Jim - '65-68  
MELIZA, Delbert - '65-67  
MERRITT, Gary - '72-74  
MERRITT, Keith - '69-70  
MEYERS, Rick - '81-82  
MILLER, Mark - '80-81  
MILLIGAN, Matt - '88-92  
MOLLER, Steve - '65-67  
MORGAN, David - '71-73  
MORGAN, Kurt - '75-76  
MOUNT, Matt - '82-85

## N

NEWKIRK, Aaron - '95-96  
NEWMAN, Dan - '80-82  
NOTTAGE, Keith - '79-80

## O

OGLES, Jiles - '65-69  
OLIVER, Jon - '81-82  
OLSON, Jim - '77-78  
ORICK, Travis - '94-96  
O'NEIL, Don - '73-74  
O'NEIL, Matt - '93-94

## P

PALMER, Kevin - '80-81  
PAOLA, Justin - '93-94  
PATOINE, Chris - '88-90  
PATTERSON, Dwight - '82-85  
PEREGRIN, Mike - '78-79  
PETERSON, Bob - '65-68  
PETERSON, Brent - '85-89  
PIERCE, Michael - '91-92  
POET, Dan - '92-93

## Q

## R

RACICOT, Vic - '69-70  
RASMUSSEN, Mike - '89-93  
RATZLAFF, Mitch - '93-96  
RAUCH, Aaron - '90-91  
REDMOND, Mike - '85-87  
REEDA, Haynes - '74-75  
REIMER, Stan - '66-70  
RETTMANN, Todd - '82-84  
RICHARDS, Jeff - '87-89  
RIDEMAN, Dennis - '67-69  
RIGGAN, Mike - '80-81  
RIGGS, Tony - '68-72  
RINARD, Dean - '66-69  
RONNOW, Kurt - '88-92  
ROTH, Ed - '79-80

ROYER, Mike - '78-82

RUSSELL, Stan - '80-81 / '82-83

## S

SAMODUROV, Cliff - '85-88  
SCARTH, Dave - '79-80  
SCHEIDEL, Curt - '90-92  
SCHLACHTER, Rich - '86-90  
SCOTT, George - '73-75  
SELLITTO, Gino - '85-86  
SHEPHERD, Gordon - '75-77  
SHERMAN, Dave - '69-70  
SHORT, Jay - '92-93  
SMITH, Eric - '80-82  
SMITH, J.R. - '81-82  
SMITH, Mark - '84-85  
SNARE, Ron - '69-70  
SPENCER, Todd - '91-92  
SPURGEON, Jeff - '87-88  
STEWART, Nique - '94-95  
STONE, Kenny - '83-87  
STRAUSS, Jon - '93-95  
STRUTZ, Jon - '75-77 / '78-79  
STRUTZ, Steve - '72-76  
STURZINGER, Ernie - '76-77  
SWANSON, Eric - '86-88  
SWEENEY, Nick - '74-76

## T

TAYLOR, Craig - '71-73  
THOMPSON, Iiley - '82-84  
TURCOTTE, Tom - '89-91  
TWENGE, Dale - '65-67

## U

UPCHURCH, Charles - '77-79

## V

VALENTINE, Kyle - '95-96  
VAN DER KOOT, Hille - '79-81  
VARCE, Phil - '70-73  
VASEY, Al - '82-86  
VERNON, Mark - '75-77  
VILEN, Brad - '79-80  
VOTH, Virgil - '83-84

## W

WARD, Steve - '77-78  
WEBBERLEY, Wade - '88-89  
WEISNER, Darcy - '77-79  
WHITE, Jim - '88-89  
WHITE, Tim - '85-88  
WHITHAM, Nathan - '82-83  
WILDING, Scott - '79-80  
WILLIS, Ray - '72-75  
WILSON, Dave - '87-88 / '89-92  
WILSON, Jess - '65-67  
WILSON, Tobi - '81-83  
WOOLSEY, Dean - '65-66  
WRIGHT, Bob - '73-74  
WUNDER, Rob - '72-74

## X

## Y

## Z

# HONORED BRUINS



*Jamie Boutin*

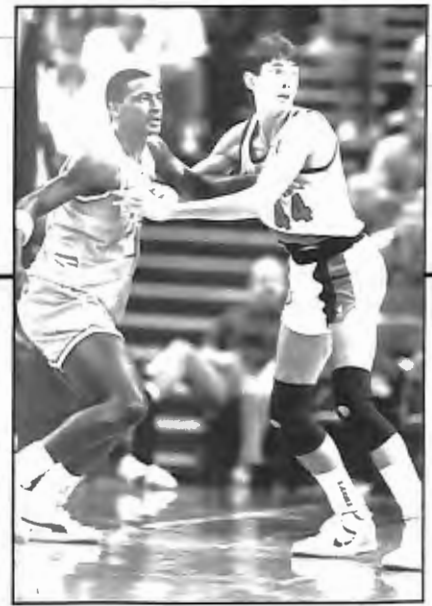
<b>Gordy Loewen</b>	NAIA Dist. 2 All-Star	1968-69; '69-70; '70-71
<b>David Morgan</b>	NAIA Dist. 2 Honorable Mention	1970-71
<b>Sammy Ibarra</b>	NAIA Dist. 2 Second Team	1972-73
<b>Craig Taylor</b>	NAIA Dist. 2 Honorable Mention	1972-73
<b>Rob Wunder</b>	NAIA Dist. 2 Honorable Mention	1972-73
	NAIA Dist. 2 First Team	1973-74
	All-Northwest First Team	1973-74
	UPI West Coast Honorable Mention	1973-74
<b>Ray Willis</b>	NAIA Dist. 2 Honorable Mention	1973-74; '74-75
<b>Bob Wright</b>	NAIA Dist. 2 Honorable Mention	1973-74
<b>Tim Hardie</b>	NAIA Dist. 2 All-Star	1976-77
<b>Paul Cozens</b>	NAIA Dist. 2 First Team	1974-75; '75-76; '76-77; '77-78
	All-Northwest First Team	1975-76; '77-78
	All-Northwest Second Team	1976-77
	NAIA All-American Third Team	1976-77
	NAIA All-American Second Team	1977-78
	First GFC player to have jersey retired	1977-78
	UPI West Coast Honorable Mention	1977-78
	NBA Ninth-Round Draft Choice	1978
	(Portland Trail Blazers)	
<b>Gary Chenault</b>	NAIA Dist. 2 Second Team	1978-79
	All-Northwest Honorable Mention	1978-79
<b>Jeff Loe</b>	NAIA Dist. 2 Honorable Mention	1979-80
<b>Hille van der Kooy</b>	NAIA Dist. 2 First Team	1979-80; '80-81
<b>Mike Royer</b>	NAIA Dist. 2 Honorable Mention	1981-82
<b>Randy Dunn</b>	NAIA Dist. 2 First Team	1981-82; '82-83; '83-84
	All-Northwest First Team	1983-84
	All-Northwest Second Team	1981-82; '82-83
	NAIA Honorable Mention All-American	1982-83; '83-84
	NCCAA Region 7 Most Valuable	1982-83; '83-84
	NCCAA All-American	1983-84
	NAIA Dist. 2 Basketball Player of the Year	1983-84
	NAIA Dist. 2 Athlete of the Year	1983-84
	Second GFC player to have jersey retired	1983-84
	NBA Tenth-Round Draft Choice	1984
	(Portland Trail Blazers)	
	NAIA Dist. 2 Hall of Fame	1994
<b>Larry Jury</b>	NAIA Dist. 2 First Team	1984-85
	NCCAA Region 8 First Team	1984-85
<b>Curtis Kimbrough</b>	NAIA Dist. 2 Honorable Mention	
		1984-85; '85-86; '86-87
<b>Toby Long</b>	NAIA Dist. 2 Honorable Mention	1985-86; '86-87
	All-Northwest Honorable Mention	1985-86; '86-87
	NAIA Academic All-American	1986-87
<b>Kenny Stone</b>	NAIA All-American Third Team	1985-86; '86-87
	NAIA Dist. 2 Basketball Player of the Year	1985-86; '86-87
	NAIA National Player of the Week	1/19/87
	NAIA Dist. 2 First Team	1984-85

<b>Kenny Stone</b>	All-Northwest Top Player	1985-86
	All-Northwest First Team	1986-87
	All-Northwest Second Team	1984-85
	NCCAA All-American	1984-85; '85-86; '86-87
	NCCAA Region 8 Player of the Year	1984-85; '85-86; '86-87
	NBA Seventh Round Draft Choice	1986-87
	(Portland Trail Blazers)	
	Third GFC player to have jersey retired	
<b>Dan Newman</b>	NAIA Dist. 2 First Team	1981-82; '86-87; '87-88
	All-Northwest Third Team	1986-87; '87-88
	NCCAA Region 8 First Team	1986-87; '87-88
<b>Eric Swanson</b>	NAIA Dist. 2 First Team	1987-88
	NCCAA Region 8 First Team	1987-88
	All-Northwest Honorable Mention	1987-88
<b>Pat Casey</b>	NAIA Dist. 2 First Team	1988-89
<b>Brian Martin</b>	NAIA Dist. 2 Scholar-Athlete	1991-92
<b>Jeff Hoffman</b>	NAIA Honorable Mention All-American	1990-91
	NAIA Dist. 2 First Team	1990-91; '91-92
	All-Northwest First Team	1990-91; '91-92
	NAIA Division II Honorable Mention All-American	1991-92
<b>Dave Wilson</b>	NAIA Dist. 2 Most Valuable Player	1989-90; '91-92
	NAIA Dist. 2 First Team	1989-90; '90-91; '91-92
	NAIA Honorable Mention All-American	1989-90; '90-91
	NAIA Division II First Team All-American	1991-92
	NAIA Division II National All-Tournament Team	1991-92
	NAIA Division II National Player of the Week	1/13/92
	All-Northwest First Team	1989-90; '90-91; '91-92
	All-Northwest Most Valuable Player	1989-90; '91-92
<b>Jamie Boutin</b>	NAIA Dist. 2 Honorable Mention	1992-93
	Cascade Conference First Team	1992-93; '93-94
	NAIA Division II Honorable Mention All-American	1993-94
<b>Rick Gardea</b>	Cascade Conference Honorable Mention	1992-93; '94-95
<b>Nick Haij</b>	Cascade Conference Honorable Mention	1993-94
	Cascade Conference First Team	1994-95
	Northwest Conference Honorable Mention	1995-96
<b>Justin Paola</b>	Cascade Conference Honorable Mention	1993-94
<b>Travis Orick</b>	Cascade Conference Honorable Mention	1994-95
<b>Jared Gallop</b>	Cascade Conference Freshman of the Year	1994-95
	Northwest Conference Second Team	1995-96

## MOST VALUABLE PLAYERS

1968-69	Gordy Loewen	1983-84	Randy Dunn
1969-70	Gordy Loewen	1984-85	Kenny Stone
1970-71	Gordy Loewen	1985-86	Kenny Stone
1971-72	Gary Berg	1986-87	Kenny Stone
1972-73	Rob Wunder	1987-88	Eric Swanson
1973-74	Rob Wunder		Dan Newman
1974-75	Ray Willis	1988-89	Pat Casey
1975-76	Paul Cozens		Jeff Richards
1976-77	Paul Cozens	1989-90	Dave Wilson
1977-78	Paul Cozens	1990-91	Jeff Hoffman
1978-79	Gary Chenault	1991-92	Dave Wilson
1979-80	Hille van der Kooy	1992-93	Jamie Boutin
	Jeff Loe		Mike Rasmussen
1980-81	Hille van der Kooy	1993-94	Jamie Boutin
1981-82	Randy Dunn	1994-95	Nique Stewart
1982-83	Randy Dunn	1995-96	Travis Orick

# Y E A R - B Y - Y E A R L E A D E R S



*Kenny Stone*

## YEAR-BY-YEAR LEADERS

### SCORING

Year	Name	Total	Games	Average
1965-66	Gary Blackmar	303	28	10.82
1966-67	Gary Blackmar	410	26	15.77
1967-68	Gary Blackmar	321	23	13.95
1968-69	Gordy Loewen	437	26	16.81
1969-70	Gordy Loewen	368	22	16.72
1970-71	Sammy Ibarra	408	28	14.57
1971-72	Gary Berg	378	25	15.12
1972-73	Sammy Ibarra	442	31	14.26
1973-74	Rob Wunder	567	30	18.90
1974-75	Paul Cozens	441	28	15.57
1975-76	Paul Cozens	530	27	19.62
1976-77	Tim Hardie	562	28	20.07
1977-78	Paul Cozens	692	29	23.86
1978-79	Gary Chenault	491	29	16.90
1979-80	Hille van der Kooy	598	29	20.60
1980-81	Hille van der Kooy	572	28	20.43
1981-82	Randy Dunn	581	33	17.61
1982-83	Randy Dunn	614	29	21.17
1983-84	Randy Dunn	541	25	21.64
1984-85	Kenny Stone	586	34	17.24
1985-86	Kenny Stone	592	30	19.73
1986-87	Kenny Stone	576	33	17.45
1987-88	Dan Newman	591	28	21.12
1988-89	Pat Casey	520	29	17.93
1989-90	Dave Wilson	656	34	19.30
1990-91	Jeff Hoffman	690	29	23.79
1991-92	Dave Wilson	799	35	22.83
1992-93	Jamie Boutin	460	27	17.04
1993-94	Justin Paola	543	33	16.45
1994-95	Nick Haij	543	31	17.52
1995-96	Jared Gallop	431	24	17.96

### REBOUNDING

Year	Name	Total	Games	Average
1965-66	Dave Alteneder	297	28	10.61
1966-67	Gary Blackmar	295	25	11.80
1967-68	Dave Alteneder	282	26	10.84
1968-69	Tom Ackerman	242	19	12.73
1969-70	Gordy Loewen	231	22	10.50
1970-71	Gordy Loewen	275	28	9.82
1971-72	Gordy Loewen	240	25	9.60
1972-73	Rob Wunder	265	31	8.55
1973-74	Ray Willis	289	30	9.63
1974-75	Ray Willis	277	30	9.23
1975-76	Paul Cozens	280	27	10.37
1976-77	Paul Cozens	305	29	10.51
1977-78	Paul Cozens	370	29	12.75
1978-79	Mike Peregrin	184	29	6.34
1979-80	Hille van der Kooy	333	29	11.50
1980-81	Hille van der Kooy	327	28	11.69
1981-82	Randy Dunn	122	33	12.79

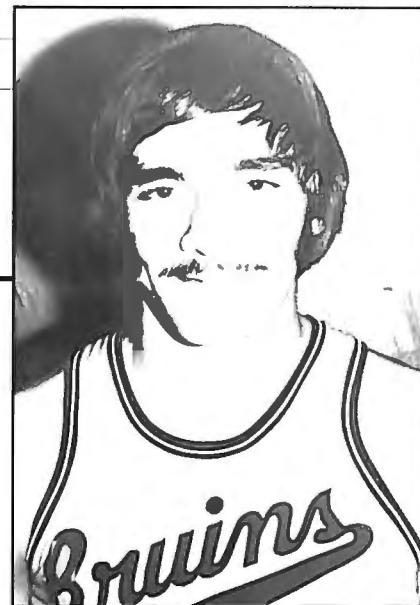
Year	Name	Total	Games	Average
1982-83	Randy Dunn	343	29	11.83
1983-84	Randy Dunn	226	25	9.04
1984-85	Kenny Stone	285	34	8.38
1985-86	Kenny Stone	318	30	10.60
1986-87	Kenny Stone	309	33	9.36
1987-88	Eric Swanson	397	33	12.03
1988-89	Rich Schlachter	208	30	6.93
1989-90	Dave Wilson	294	34	8.60
1990-91	Jeff Hoffman	374	29	12.90
1991-92	Jeff Hoffman	374	35	10.69
1992-93	Mike Rasmussen	219	27	8.11
1993-94	Justin Paola	290	33	8.78
1994-95	Nique Stewart	280	31	9.03
1995-96	Jared Gallop	161	24	6.71

### ASSISTS

Year	Name	Total	Games	Average
1965-70	No record			
1970-71	Ed Fields	120	27	4.44
1971-72	Ed Fields	71	25	2.84
1972-73	Ed Fields	103	31	3.32
1973-74	Ray Willis	122	30	4.06
1974-75	Ray Willis	128	30	4.26
1975-76	Tom Hewitt	138	27	5.11
1976-77	Tom Hewitt	177	29	6.10
1977-78	Dave Adrian	114	29	3.93
1978-79	Tim Adrian	96	29	3.31
1979-80	Phil Barnhart	172	30	5.92
1980-81	Mike Royer	136	28	4.86
1981-82	Mike Royer	178	33	5.39
1982-83	Al Vasey	135	31	4.35
1983-84	Al Vasey	167	28	5.96
1984-85	Les Harrison	154	34	4.53
1985-86	Curtis Kimbrough	163	31	5.26
1986-87	Curtis Kimbrough	156	33	4.73
	Brent Peterson	156	33	4.73
1987-88	Dan Newman	149	28	5.32
1988-89	Jeff Richards	160	30	5.33
1989-90	Brian Martin	247	34	8.10
1990-91	Brian Martin	340	30	11.30
1991-92	Curt Scheidel	231	35	6.60
1992-93	Grant Hartenstein	161	29	5.55
1993-94	Grant Hartenstein	189	33	5.73
1994-95	Rick Gardea	136	31	4.39
1995-96	Kyle Valentine	71	24	3.10

# BRUIN TOP TEN

Paul Cozens



## CAREER SCORING

Name	Years Played	Games	Total	Avg.
Dave Wilson	1987-88:			
	1989-90	131	2296	17.52
Paul Cozens	1974-78	113	2187	19.35
Dan Newman	1980-82:			
	1986-88	120	2113	17.61
Kenny Stone	1983-87	126	2050	16.27
Randy Dunn	1981-84	88	1744	19.82
Nick Haij	1992-96	113	1714	15.17
Mike Royer	1978-82	114	1367	12.00
G. Hartenstein	1992-96	116	1346	11.60
Dave Adrian	1975-78:			
	1979-80	103	1307	12.69
Gordy Loewen	1968-72	100	1300	13.00
Jeff Hoffman	1990-92	64	1264	19.75

## CAREER REBOUNDING

Name	Years Played	Games	Total	Avg.
Paul Cozens	1974-78	113	1147	10.15
Kenny Stone	1983-87	126	1116	8.86
Dave Wilson	1987-88:			
	1989-90	131	1111	8.48
Dave Alteneder	1965-69	104	1013	9.74
Randy Dunn	1981-84	88	994	11.30
Gordy Loewen	1968-72	100	968	9.68
C. Kimbrough	1983-87	116	797	6.87
Ray Willis	1972-75	91	771	8.47
Jeff Hoffman	1990-92	64	748	11.69
Gary Blackmar	1965-68	76	740	9.74

## CAREER ASSISTS

Name	Years Played	Games	Total	Avg.
Brian Martin	1989-91	64	614	9.59
Al Vasey	1982-86	118	520	4.41
G. Hartenstein	1992-96	116	511	4.4
Mike Royer	1978-82	114	509	4.46
C. Kimbrough	1983-87	116	501	4.32
Brent Peterson	1985-89	116	462	3.98
Phil Barnhart	1977-81	113	428	3.79
Tom Hewitt	1973-77	111	404	3.64
Dave Adrian	1975-78:			
	1979-80	103	376	3.65
Eddie Fields	1970-73	83	325	3.92

## CAREER FIELD-GOAL ACCURACY

(Minimum two years)

Name	Years	SM/SA	Pct.
Dave Wilson	1987-88:		
	1989-92	881/1418	.621
Eric Swanson	1986-88	431/736	.586
Kenny Stone	1983-87	794/1388	.572
Toby Long	1985-87	346/607	.570
Jiley Thompson	1982-84	188/336	.560
Paul Cozens	1974-78	895/1620	.552
Randy Dunn	1981-84	697/1265	.551
Mike Redmond	1985-87	250/455	.549
D. Mautermann	1981-83	245/447	.548
Eric Smith	1980-82	122/224	.545

## CAREER FREE-THROW ACCURACY

(Minimum two years)

Name	Years	SM/SA	Pct.
Gary Chenault	1976-79	193/224	.870
Dave Morgan	1970-72	84/98	.857
Paul Cozens	1974-78	397/470	.845
Al Vasey	1982-86	126/151	.834
E. Lautenbach	1984-88	146/177	.825
Dan Newman	1980-82:		
	1986-88	380/462	.822
Jim McNelly	1965-67	82/100	.820
Nick Haij	1992-96	203/251	.809
Randy Dunn	1981-84	350/441	.794
Larry Jury	1983-84	231/299	.773
Dave Wilson	1987-88:		
	1989-90	534/691	.773

## CAREER STEALS

Name	Years Played	Games	Total	Avg.
C. Kimbrough	1983-87	116	341	2.94
Kenny Stone	1983-87	126	252	2.00
Brent Peterson	1985-89	116	214	1.84
Les Harrison	1984-86	61	178	2.92
Gary Chenault	1976-79	86	161	1.87

## CAREER BLOCKS

Name	Years Played	Games	Total	Avg.
Dave Wilson	1987-88			
	1989-92	131	598	4.56
Kenny Stone	1983-87	126	430	3.41
H. van der Kooy	1979-81	57	121	2.12
C. Kimbrough	1983-87	116	74	0.63
Rich Schlachter	1986-90	103	74	0.72

## SEASON SCORING

Name	Year	Total
Dave Wilson	1987-92	799
Paul Cozens	1977-78	692
Jeff Hoffman	1990-91	690
Dave Wilson	1989-90	656
Eric Swanson	1987-88	654
Randy Dunn	1982-83	614
Hille van der Kooy	1979-80	598
Kenny Stone	1985-86	592
Dan Newman	1987-88	591
Randy Dunn	1981-82	581

## SEASON REBOUNDING

Name	Year	Total
Randy Dunn	1981-82	422
Eric Swanson	1987-88	397
Jeff Hoffman	1990-91	374
Jeff Hoffman	1991-92	374
Paul Cozens	1977-78	370
Randy Dunn	1982-83	343
Dave Wilson	1991-92	334
Hille van der Kooy	1979-80	333
Hille van der Kooy	1980-81	327
Kenny Stone	1985-86	318

## SEASON ASSISTS

Name	Year	Total
Brian Martin	1990-91	340
Brian Martin	1989-90	274
Curt Scheidel	1991-92	231
Grant Hartenstein	1993-94	189
Mike Royer	1981-82	178
Tom Hewitt	1976-77	177
Phil Barnhart	1979-80	172
Al Vasey	1983-84	172
Jeff Bieker	1981-82	168
Curtis Kimbrough	1985-86	163

## SEASON SCORING AVERAGE

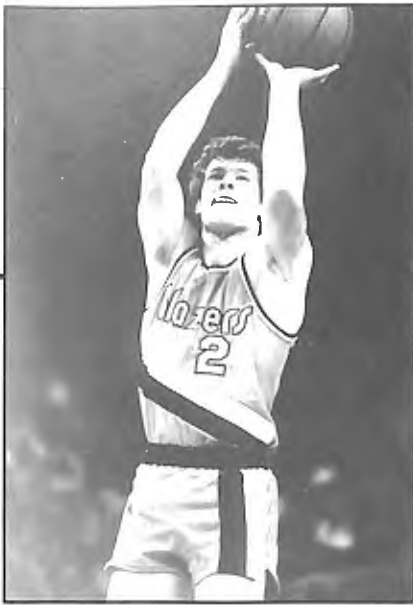
Name	Year	Avg.
Paul Cozens	1977-78	23.9
Jeff Hoffman	1990-91	23.8
Dave Wilson	1991-92	22.8
Randy Dunn	1982-83	21.2
Randy Dunn	1983-84	21.1
Dan Newman	1987-88	21.1
Hille van der Kooy	1979-80	20.6
Hille van der Kooy	1980-81	20.4
Tim Hardie	1976-77	20.1
Eric Swanson	1987-88	19.8

## SEASON REBOUNDING AVERAGE

Name	Year	Avg.
Jeff Hoffman	1990-91	12.90
Randy Dunn	1981-82	12.79
Paul Cozens	1977-78	12.75
Tom Ackerman	1968-69	12.73
Eric Swanson	1987-88	12.03
Randy Dunn	1982-83	11.83
Gary Blackmar	1966-67	11.80
Hille van der Kooy	1980-81	11.70
Hille van der Kooy	1979-80	11.50
Dave Alteneder	1967-68	10.80

## SEASON STEALS

Name	Years Played	Games	Total	Avg.
Curtis Kimbrough	1986-87	33	110	3.33
Curtis Kimbrough	1985-86	31	108	3.48
Curtis Kimbrough	1984-85	34	104	3.06
Les Harrison	1984-85	34	90	2.65
Les Harrison	1985-86	27	88	3.26



# BRUIN TOP TEN

Randy Dunn

## SEASON BLOCKS

Name	Year	Games	Total	Avg.
Dave Wilson	1987-88	33	170	5.15
Dave Wilson	1989-90	34	166	4.88
Dave Wilson	1990-91	29	125	4.31
Dave Wilson	1991-92	35	137	3.91
Kenny Stone	1984-85	34	123	3.62
Kenny Stone	1986-87	33	122	3.70
Kenny Stone	1985-86	30	112	3.73
Kenny Stone	1983-84	29	73	2.52

## GAME SCORING

Name	Date (Opponent)	Total
Jeff Hoffman	2/14/91 (Columbia Christian)	50
H. van der Kooy	12/5/80 (Eastern Oregon)	42
Jared Gallop	12/1/95 (Concordia)	39
Paul Cozens	1/21/78 (Warner Pacific)	38
H. van der Kooy	2/21/81 (Warner Pacific)	38
Paul Cozens	2/19/75 (Southern Oregon)	37
Jamie Boutin	11/21/92 (Southern Oregon)	37
Nick Haij	11/18/94 (Concordia)	37
Jared Gallop	2/10/96 (Lewis & Clark)	36
Tom Hewitt	1/25/77 (Alaska-Anchorage)	36
Eric Swanson	2/27/88 (Eastern Oregon)	36
Paul Cozens	12/30/75 (Linfield)	35
Jeff Hoffman	12/8/90 (Puget Sound)	35
Jeff Hoffman	12/29/90 (Eastern Oregon)	35
Dave Wilson	1/23/92 (Concordia)	35

## GAME REBOUNDING

Name	Date (Opponent)	Total
Justin Paola	1/6/94 (Northwest Christian)	26
Gordy Loewen	2/11/71 (Warner Pacific)	25
Jeff Hoffman	11/24/90 (St. Martin's)	24
H. van der Kooy	12/5/80 (Eastern Oregon)	23
Randy Dunn	2/18/84 (NW Nazarene)	23
Eric Swanson	2/5/88 (NW Nazarene)	23
Jeff Hoffman	2/29/92 (Willamette)	22
Gordy Loewen	2/22/69 (Southern Oregon)	22
Kenny Stone	1/24/87 (Eastern Oregon)	21
Dave Wilson	1/19/91 (Warner Pacific)	20

and four other players a total of 8 times

## GAME ASSISTS

Name	Date (Opponent)	Total
Brian Martin	1 19 91 (Warner Pacific)	20
Brian Martin	2 14 91 (Columbia Christian)	18
Brian Martin	2 20 90 (Concordia)	17
Brian Martin	1 12 91 (Northwest Nazarene)	16
Brian Martin	2 16 91 (Western Baptist)	16
Brian Martin	1 5 91 (Western Baptist)	15
Brian Martin	2 2 91 (Warner Pacific)	15
G. Hartenstein	1 16 93 (Northwest Christian)	15
Mike Royer	1 18 82 (Eastern Oregon)	14
Les Harrison	3 1 86 (Warner Pacific)	14
Brian Martin	3 2 91 (Linfield)	14

## GAME STEALS

Name	Date (Opponent)	Total
C. Kimbrough	12 19 84 (U.C.-San Diego)	11
Jeff Richards	1 2 88 (Dominican)	11
Toby Long	1/23 87 (Northwest)	9
C. Kimbrough	12 14 85 (Concordia)	8
Les Harrison	1 11 86 (Columbia Christian)	8
Todd Erickson	2/19 91 (Concordia)	8
Aaron Downs	11 15 94 (St. Martin's)	7
Aaron Downs	2 7 95 (Concordia)	7

## GAME BLOCKS

Name	Date (Opponent)	Total
Dave Wilson	11 19 91 (Northwest Christian)	13
Dave Wilson	2/9 88 (Concordia)	12
Dave Wilson	11 17 89 (Pacific)	12
Dave Wilson	3/10 88 (Concordia)	11
Dave Wilson	1/2 88 (Dominican)	11
Dave Wilson	12/2 87 (Willamette)	10
Dave Wilson	11/25 89 (Seattle Pacific)	10
Dave Wilson	11 10 92 (William Jewell)	10

## GAME TRIPLE-DOUBLES

Name	Pts.	Rbs.	Asts.	Blks.
Dave Adrian	10	10	10	
College of Idaho (2/11 78)				
Kenny Stone	21	11	10	
NW Nazarene (1/17 87)				
Curtis Kimbrough	12	10	10	
Northwest College (1/23 87)				
Dave Wilson	14	11		11
Dominican (1/2 88)				
Dave Wilson	20	10		12
Concordia (2/9 88)				
Dave Wilson	18	11		11
Concordia (3/10 88)				
Jeff Richards	15	10	12	
NW Christian (1 14 89)				
Brian Martin	17	10	12	
Willamette (3/2 91)				
Dave Wilson	21	12		13
NW Christian (11 19 91)				

## VALUE POINT SYSTEM

The Value Point System measures a player's overall effectiveness. It is computed by adding the points scored, plus rebounds, plus twice the number of assists, plus twice the number of steals. That figure is divided by the number arrived at by adding twice the number of missed field goals, plus foul shots missed, plus twice the number of turnovers, plus twice the number of fouls.

## CAREER

Brian Martin	1989-91	1.92
Paul Cozens	1974-78	1.75
Dave Wilson	1987-92	1.68
Eric Swanson	1986-88	1.67
Mark Vernon	1975-77	1.63
Randy Dunn	1981-83	1.62
Al Vasey	1982-86	1.60
Curtis Kimbrough	1983-87	1.55
Ed Fields	1970-73	1.50
Brent Peterson	1985-88	1.48

## SEASON

Brian Martin	1990-91	2.02
Dave Wilson	1991-92	1.95
Paul Cozens	1977-78	1.95
Curtis Kimbrough	1986-87	1.92
Brian Martin	1989-90	1.83
Al Vasey	1984-85	1.81
Eric Swanson	1987-88	1.78
Mark Vernon	1976-77	1.77
Paul Cozens	1976-77	1.76
Al Vasey	1983-84	1.76



## INDIVIDUAL

### SINGLE-GAME RECORDS

#### Most Points

50 ..... Jeff Hoffman  
vs. Columbia Christian 2/14/91

#### Most Field Goals

19 ..... Jeff Hoffman  
vs. Columbia Christian 2/14/91

#### Most Field Goals Att.

31 ..... Larry Craven  
vs. Southern Oregon 1/26/69

#### Best Field-Goal Pct.

1.000 (10-10) ..... J. R. Smith  
vs. Columbia Christian 1/29/82

#### Best Field-Goal Pct. (with miss)

.933 (14-15) ..... Paul Cozens  
vs. Pacific 12/17/76

#### Most 3-Point Goals

9 ..... Nick Haij  
(9-17) vs. Concordia 11/18/94

#### Most 3-Point Attempts

17 ..... Nick Haij  
(8-17) vs. St. Martin's 12/8/93  
(9-17) vs. Concordia 11/18/94

#### Best 3-Point Percentage

1.000 (6-6) ..... Jeff Hoffman  
vs. Columbia Christian 2/14/91

#### Most Free Throws Made

16 ..... Kenny Stone (16-19)  
vs. College of Idaho 1/28/87

#### Most Free Throws Att.

19 ..... Kenny Stone (16-19)  
vs. College of Idaho 1/28/87  
Grant Hartenstein (12-19)  
vs. Southern Oregon 11/21/95

#### Best Free-Throw Pct.

1.000 ..... Justin Paola (13-13)  
vs. Western Oregon 2/12/94

#### Best Free-Throw Pct. (with miss)

.933 ..... Tom Hewitt (14-15)  
vs. Pacific 12/18/75  
Hille van der Kooy (14-15)  
vs. Eastern Oregon 12/5/80  
Randy Dunn (14-15)  
vs. Linfield 1/6/84

#### Most Rebounds

26 ..... Justin Paola  
vs. Northwest Christian 1/6/94

#### Most Off. Reb.

16 ..... Gordy Loewen  
vs. Warner Pacific 2/11/71

#### Most Def. Reb.

20 ..... Eric Swanson  
vs. Northwest Nazarene College 2/8/88

#### Most Assists

20 ..... Brian Martin  
vs. Warner Pacific 1/19/91

#### Most Turnovers

11 ..... Gary Chenault  
vs. Portland State 1/13/78

#### Most Steals

11 ..... Curtis Kimbrough  
vs. U.C. - San Diego 12/19/84  
Jeff Richards  
vs. Dominican 1/2/88

#### Most Blocked Shots

13 ..... Dave Wilson  
vs. Northwest Christian 11/19/91

## INDIVIDUAL

### SEASON RECORDS

#### Most Points

799 ..... Dave Wilson 1991-92

#### Best Average

23.9 ..... Paul Cozens 1977-78

#### Most Field Goals Made

299 ..... Dave Wilson 1991-92

#### Most Field Goals Att.

500 ..... Rob Wunder 1973-74

#### Best Field-Goal Pct.

.642 (122-190) ..... Dave Wilson 1987-88

#### Most Consecutive Field Goals

16 ..... J.R. Smith 1981-82

#### Most 3-Points Made

110 ..... Nick Haij 1993-94

#### Most 3-Point Attempts

292 ..... Nick Haij 1994-95

#### Best 3-Point Pct.

.500 (48/96) ..... Dan Newman 1987-88

#### Most Free Throws Made

201 ..... Dave Wilson 1991-92

#### Most Free Throws Att.

249 ..... Dave Wilson 1991-92

#### Best Free-Throw Pct.

.932 (69-74) ..... Dan Newman 1986-87

#### Most Consecutive Free Throws

56 ..... Gary Chenault 1978-79

#### Most Rebounds

422 ..... Randy Dunn 1981-82

#### Most Offensive Rebounds

138 ..... Randy Dunn 1981-82

#### Most Defensive Rebounds

287 ..... Eric Swanson 1987-88

#### Best Rebound Average

12.90 ..... Jeff Hoffman 1990-91

#### Most Assists

340 ..... Brian Martin 1990-91

#### Best Assist Average

11.33 ..... Brian Martin 1990-91

#### Most Blocked Shots

170 ..... Dave Wilson 1987-88

#### Best Block Average

5.15 ..... Dave Wilson 1987-88

#### Most Turnovers

132 ..... Mike Royer 1981-82

#### Most Steals

110 ..... Curtis Kimbrough 1986-87

#### Best Steal Average

3.48 ..... Curtis Kimbrough 1985-86

#### Most Fouls

116 ..... Dave Mauermann 1982-83

#### Highest Foul Average

3.74 ..... Dave Mauermann 1982-83

#### Most Games Played

35 ..... 7 players tied 1991-92

## INDIVIDUAL

### CAREER RECORDS

#### Most Points

2,296 ..... Dave Wilson 1987-88; '89-92

#### Best Average

20.53 ..... Hille van der Kooy 1979-81

#### Most Field Goals Made

895 ..... Paul Cozens 1974-78

#### Most Field Goals Att.

1,620 ..... Paul Cozens 1974-78

#### Best Field-Goal Pct.

.621 ..... Dave Wilson 1987-92; '89-92

#### Most 3-Points Made

369 ..... Nick Haij 1992-96

#### Most 3-Point Attempts

976 ..... Nick Haij 1992-96

#### Best 3-Point Percentage

.479 (80/167) ..... Dan Newman 1986-88

#### Most Free Throws

534 ..... Dave Wilson 1987-92; '89-92

#### Most Free Throws Att.

691 ..... Dave Wilson 1987-92; '89-92

#### Best Free-Throw Pct.

.870 ..... Gary Chenault 1976-79

#### Most Rebounds

1,147 ..... Paul Cozens 1974-78

#### Most Offensive Rebounds

335 ..... Randy Dunn 1981-84

#### Most Defensive Rebounds

821 ..... Paul Cozens 1974-78



*Dave Wilson*

# TEAM / MILLER GYM RECORDS

## TEAM

### SINGLE-GAME RECORDS

#### Most Points

143 ..... vs. Northwest (143-56) 1/23/87

#### Fewest Points

33 ..... vs. Eastern Oregon (33-30) 2/6/81

#### Fewest Points Against

30 ..... vs. Eastern Oregon (33-30) 2/6/81

#### Most Points Against

124 ..... vs. Portland State (124-81) 1/13/78

#### Biggest Winning Margin

87 ..... vs. Northwest (143-56) 1/23/87

#### Biggest Losing Margin

62 ..... vs. Lewis & Clark (112-50) 1/15/70

#### Most Field Goals

57 ..... vs. Northwest 1/23/87

#### Most Field Goals Att.

114 ..... vs. Columbia Christian 1/8/74

#### Best Field-Goal Pct.

.714 ..... vs. Columbia Christian (40-56) 1/29/82

#### Worst Field-Goal Pct.

.202 ..... vs. Pacific (21-104) 12/10/67

#### Most 3-Point Goals

18 ..... vs. Northwest Christian 2/8/94

#### Most 3-Point Attempts

46 ..... vs. Northwest Christian 2/8/94

#### Best 3-Point Percentage

.778 (7/9) ..... vs. St. Martin's 1/6/87  
vs. Northwest Christian 1/20/89

#### Most Free Throws Made

39 ..... vs. Lewis & Clark (39-47) 1/8/71

#### Most Free Throws Att.

50 ..... vs. Northwest Nazarene (30-50) 2/14/70

vs. Western Oregon (38-50) 2/15/86

#### Best Free-Throw Pct.

1.000 ..... vs. Western Baptist (11-11) 12/17/94

#### Best Free-Throw Pct. (with miss)

.923 ..... vs. Northwest Nazarene (36-39) 2/9/76

#### Most Rebounds

104 ..... vs. Columbia Christian 1/8/74

#### Most Assists

41 ..... vs. Northwest 1/23/87

#### Most Turnovers

48 ..... vs. Whitman 12/19/72

#### Most Personal Fouls

39 ..... vs. Northwest Nazarene 2/4/71

#### Most Steals

31 ..... vs. Dominican 1/2/88

#### Most Blocked Shots

22 ..... vs. Northwest Christian 11/19/91

## TEAM

### SEASON RECORDS

Most Wins ..... 29 (29-5) '89-90

Best Winning Pct. .... .853 (29-5) '89-90

Most Losses ..... 23 (3-23) '69-70

Fewest Losses ..... 5 (29-5) '89-90

Fewest Wins ..... 3 (3-23) '69-70

Lowest Winning Pct. .... .115 (3-23) '69-70

Most Points ..... 3,207 '91-92

Fewest Points ..... 1,816 '68-69

Most Points Against ..... 2,833 '91-92

Fewest Points Against ..... 1,942 '96-97

Highest Scoring Average ..... 100.4 '90-91

Lowest Scoring Average ..... 66.9 '65-66

Highest Scoring Avg. Against ..... 89.0 '69-70

Lowest Scoring Avg. Against ..... 66.6 '65-66

Highest Scoring Margin ..... 20.4 '86-87

Most Field Goals Made ..... 1,258 '86-87

Most Field Goals Att. .... 2,273 '91-92

Best Field-Goal Pct. .... .556 '86-87

Most 3-Point Goals ..... 328 '93-94

Most 3-Point Att. .... 893 '93-94

Best 3-Point Pct. .... .416 '87-88

Most Free Throws Made ..... 708 '91-92

Most Free Throws Att. .... 956 '91-92

Best Free-Throw Pct. .... .775 '83-84

Most Rebounds ..... 1,651 '91-92

Best Rebound Average ..... 50.9 '90-91

Best Rebound Margin ..... 10.2 '91-92

Most Assists ..... 834 '86-87

Best Assist Average ..... 26.6 '90-91

Most Blocked Shots ..... 268 '89-90

Best Blocked-Shots Average ..... 7.9 '89-90

Most Turnovers ..... 596 '85-86

Most Steals ..... 483 '86-87

Best Steal Average ..... 14.6 '86-87

Most Personal Fouls ..... 704 '84-85

Longest Winning Streak ..... 15 '86-87

(games 8 thru 22)

Longest Losing Streak ..... 18 '69-70

(games 8 thru 25)

## MILLER GYM RECORDS

### INDIVIDUAL

#### Most Points

50 ..... Jeff Hoffman (GF)

vs. Columbia Christian 2/14/91

#### Most Field Goals

20 ..... Mark Wickman

(Linfield) vs. GF 1/2/78

#### Most Field Goals Att.

29 ..... Vinne Forks (SOSC)

vs. Concordia 12/21/79

#### Best Field Goal Pct.

1.000 (10-10) ..... J.R. Smith (GF)

vs. Columbia Christian 1/2/82

#### Most Free Throws

16 ..... Kenny Stone (GF)

vs. College of Idaho 11/28/87

#### Most Free Throws Att.

22 ..... Jason Henderson (Linfield)

vs. George Fox 2/16/96

#### Best Free Throw Pct.

1.000 (12-12) ..... Paul Cozens (GF)

vs. Warner Pacific 1/21/78

#### Most Rebounds

26 ..... Justin Paola (GF)

vs. Northwest Christian 1/6/94

#### Most Assists

20 ..... Brian Martin (GF)

vs. Warner Pacific 1/19/91

#### Most Steals

9 ..... Jeff Rust (Western Baptist)

vs. Warner Pacific 3/5/82

Toby Long (GF)

vs. Northwest 1/23/87

#### Most Blocks

12 ..... Dave Wilson (GF)

vs. Pacific 11/17/89

### TEAM

#### Most Points

143 ..... GF (vs. Northwest) 1/23/87

#### Most Field Goals

57 ..... GF (vs. Northwest) 1/23/87

#### Most Field Goals Att.

93 ..... Northwest Nazarene

(vs. Warner Pacific) 12/2/77

#### Best Field-Goal Pct.

.714 (40-56) ..... GF

(vs. Columbia Christian) 1/29/82

#### Most Free Throws

42 ..... Concordia

(vs. SOSC) 12/21/79

#### Most Free Throws Att.

52 ..... Concordia

(vs. Warner Pacific) 12/6/81

#### Best Free-Throw Pct.

1.000 (13-13) ..... Judson Baptist

(vs. Concordia) 3/5/82

#### Most Rebounds

71 ..... GF (vs. Warner Pacific) 2/17/90

#### Most Assists

41 ..... GF (vs. Northwest) 1/23/87

#### Most Steals

28 ..... GF (vs. Northwest) 1/23/87

#### Most Blocks

15 ..... GF (vs. Willamette) 12/2/88

GF (vs. Pacific) 11/17/89

# BRUIN SEASON SCORES



Terry Haskell, 1965-68

• = Away

## 1965-66

59 Lewis & Clark •	100
88 Eastern Oregon •	103
55 Oregon College of Ed. •	67
84 Alaska Methodist •	87
82 Alaska Methodist •	78
55 Alaska - Fairbanks •	73
58 Alaska - Fairbanks •	68
60 Alaska - Fairbanks •	87
65 Oregon Tech •	69
69 Oregon Tech •	90
79 Warner Pacific •	68
93 Warner Pacific •	67
76 Oregon College of Ed. •	84
66 Southern Oregon •	89
62 Southern Oregon •	73
87 Oregon College of Ed. •	101
63 Eastern Oregon •	68
51 Eastern Oregon •	60
77 Oregon Tech •	69
57 Oregon Tech •	50
49 Cascade •	66
53 Cascade •	79
62 Oregon College of Ed. •	66
72 Southern Oregon •	67
56 Southern Oregon •	55
63 Oregon College of Ed. •	79
59 Eastern Oregon •	97
75 Eastern Oregon •	79

H: 3-7 • A: 6-12 SEASON: 9-19

\*Won by forfeit

## 1966-67

64 Pacific •	65
63 Southern Oregon •	68
58 Oregon College of Ed. •	85
91 Alaska Methodist •	68
98 Alaska Methodist •	75
76 Oregon Tech •	88
74 Oregon Tech •	81
79 Warner Pacific •	68
91 Warner Pacific •	88
70 Oregon College of Ed. •	109
86 Southern Oregon •	90
70 Southern Oregon •	68
50 Oregon College of Ed. •	70
73 Eastern Oregon •	96
69 Eastern Oregon •	89
47 Oregon Tech •	82
74 Oregon Tech •	61
67 Cascade •	66
69 Cascade •	75
75 Oregon College of Ed. •	107
63 Southern Oregon •	94
81 Southern Oregon •	113
64 Oregon College of Ed. •	79
92 Eastern Oregon •	112

100 Eastern Oregon • 112  
H: 5-7 • A: 2-11 SEASON: 7-18

## 1967-68

73 Willamette •	123
60 Lewis & Clark •	90
83 Eastern Oregon •	90
106 Alaska Methodist •	75
76 Pacific •	104
59 Pacific •	83
63 Oregon Tech •	85
72 Oregon Tech •	68
68 Oregon College of Ed. •	73
84 Mt. Angel •	59
74 Mt. Angel •	54
67 Southern Oregon •	102
66 Southern Oregon •	106
74 Oregon College of Ed. •	82
69 Eastern Oregon •	72
73 Eastern Oregon •	96
65 Oregon Tech •	80
80 Oregon Tech •	55
73 Oregon College of Ed. •	93
76 Cascade •	67
71 Cascade •	73
64 Southern Oregon •	87
88 Southern Oregon •	92
74 Oregon College of Ed. •	104
66 Eastern Oregon •	82
68 Eastern Oregon •	80

H: 4-8 • A: 2-12 SEASON: 6-20

## 1968-69

61 Pacific •	84
72 Oregon College of Ed. •	101
55 Oregon Tech •	82
62 Pacific •	56
59 Pacific •	82
61 Alaska Methodist •	76
85 Alaska Methodist •	88
83 Alaska Methodist •	73
91 Oregon Tech •	86
94 Oregon Tech •	104
72 Oregon College of Ed. •	118
54 Northwest Nazarene •	82
69 Northwest Nazarene •	77
83 Southern Oregon •	111
97 Southern Oregon •	101
63 Eastern Oregon •	88
89 Eastern Oregon •	84
72 Oregon College of Ed. •	76
72 Oregon Tech •	101
66 Oregon Tech •	88
80 Oregon College of Ed. •	100
55 Southern Oregon •	57
64 Southern Oregon •	94
71 Oregon College of Ed. •	79
69 Eastern Oregon •	83
78 Eastern Oregon •	92

H: 1-8 • A: 3-14 SEASON: 4-22

## 1969-70

53 Willamette •	72
83 Oregon Tech •	89
74 College of Idaho •	100
85 Alaska Methodist •	95
92 Warner Pacific •	90
69 Pacific •	72
95 Oregon Tech •	84
65 Oregon Tech •	95
90 Oregon College of Ed. •	104
50 Lewis & Clark •	112
68 Southern Oregon •	86



Dave Berg, 1968-70

52 Southern Oregon •	68
52 Oregon College of Ed. •	66
80 Eastern Oregon •	98
57 Eastern Oregon •	89
71 Oregon College of Ed. •	87
75 Oregon Tech •	86
60 Oregon Tech •	95
81 Pacific •	91
66 Northwest Nazarene •	88
58 Northwest Nazarene •	72
83 Oregon College of Ed. •	119
67 Southern Oregon •	94
71 Southern Oregon •	90
76 Eastern Oregon •	98
81 Eastern Oregon •	75

H: 1-11 • A: 2-12 SEASON: 3-23

## 1970-71

68 Lewis & Clark •	83
60 Willamette •	85
66 Eastern Oregon •	64
69 Pacific •	83
81 Montana Tech •	59
76 LaVerne •	74
59 Fresno Pacific •	65
65 Fresno Pacific •	84
82 Alaska Methodist •	74
72 Alaska Methodist •	63
94 Alaska Methodist •	67
95 Lewis and Clark •	85
82 Victoria •	60
73 Victoria •	67
80 Western Baptist •	100
102 Oregon Tech •	67
91 Oregon Tech •	71
94 Oregon College of Ed. •	72
63 Claremont •	67
66 Northwest Nazarene •	81
78 Warner Pacific •	67
71 Warner Pacific •	77
82 Northwest •	44
81 Western Baptist •	71
65 Oregon College of Ed. •	83
76 Northwest Nazarene •	82
65 Northwest Nazarene •	78

NAIA District 2 Playoffs:

69 Willamette University • 103

H: 10-4 • A: 5-9 SEASON: 15-13

## 1971-72

74 Whitman •	70
88 Whitman •	85
78 Western Baptist •	58
93 Alaska Methodist •	84
86 Alaska Methodist •	60
70 Eastern Oregon •	75
75 Azusa Pacific •	81
53 Simon Fraser •	60
70 Alaska Methodist •	69

84 Linfield •	80
87 Linfield •	110
77 Western Montana •	84
77 Western Montana •	98
83 Oregon Tech •	114
87 Southern Oregon •	92
80 Lewis-Clark St. •	72
82 Warner Pacific •	77
91 Eastern Oregon •	83
66 Lewis-Clark St. •	76
76 Northwest Nazarene •	95
92 Western Baptist •	61
63 Warner Pacific •	70
88 Great Falls •	80
72 Northwest Nazarene •	61

NAIA District 2 Playoffs:

60 Willamette • 69

H: 7-5 • A: 6-7 SEASON: 13-12

## 1972-73

74 Linfield •	73
79 Lewis & Clark •	73
74 Willamette •	77
84 Pacific •	94
86 Pacific •	91
55 Willamette •	54
45 Willamette •	68
82 Eastern Oregon •	71
68 Linfield •	77
66 Linfield •	77
60 Whitman •	64
80 Whitman •	60
77 Pasadena •	85
67 Southern California •	68
81 Macalester •	90
60 Victoria •	62
65 Victoria •	54
51 Western Baptist •	43
63 Oregon Tech •	61
65 Southern Oregon •	68
74 Eastern Oregon •	96
72 Lewis-Clark St. •	52
78 Western Baptist •	63
84 Northwest Nazarene •	72
67 Warner Pacific •	58
62 Lewis-Clark St. •	57
60 Northwest Nazarene •	73
74 Warner Pacific •	63

NAIA District 2 Playoffs:

95 Linfield • 88

68 Pacific • 67

NAIA Nationals:

62 Defiance, Ohio • 82

H: 8-4 • A: 8-11 SEASON: 16-15

## 1973-74

49 Willamette •	43
63 Lewis & Clark •	80
55 Pacific •	57
88 Columbia Christian •	58
81 Willamette •	59
63 Willamette •	64
88 Linfield •	86
67 Pacific •	69
71 Eastern Oregon •	64
72 Southern Oregon •	53
91 Linfield •	94
81 Pacific •	57
65 Puget Sound •	81
109 Columbia Christian •	45
67 Warner Pacific •	72
66 Southern Oregon •	69
78 Oregon Tech •	90



Lorin Miller, 1970-76

88 Lewis-Clark St. •	81
73 Northwest Nazarene •	63
95 Eastern Oregon •	94
72 Alaska - Fairbanks •	69
91 Western Baptist •	67
70 Lewis-Clark St. •	67
63 Whitworth •	62
107 Warner Pacific •	71
66 Whitworth •	68
90 Northwest Nazarene •	74
84 Western Baptist •	71

NAIA District 2 Playoffs:

92 Pacific • 72

54 Oregon Tech • 55

H: 10-2 • A: 9-9 SEASON: 19-11

## 1974-75

95 Linfield •	65
71 Oregon College of Ed. •	74
70 Lewis and Clark •	75
92 Linfield •	79
106 Eastern Oregon •	76
95 Willamette •	68
63 Whitworth •	62
91 Linfield •	63
89 Pacific •	70
93 Western Baptist •	57
64 Pacific •	69
48 Oregon Tech •	67
74 Puget Sound •	86
90 Southern Oregon •	70
82 Willamette •	92
86 Lewis-Clark St. •	74
84 Warner Pacific •	77
75 Alaska-Fairbanks •	83
78 Alaska-Fairbanks •	82
87 Eastern Oregon •	75
72 Northwest Nazarene •	76
72 Redlands •	62
73 Lewis-Clark St. •	84
59 Whitworth •	64
96 Northwest Nazarene •	70
72 Oregon Tech •	74
90 Southern Oregon •	84
98 Warner Pacific •	76
86 Western Baptist •	55

NAIA District 2 Playoffs:

56 Oregon Tech • 72

H: 11-1 • A: 6-12 SEASON: 17-13

## 1975-76

62 Pacific •	68
82 Southern Oregon •	69
87 Warner Pacific •	80
89 Eastern Oregon •	59
72 Western Washington •	60
94 Pacific •	74
78 Eastern Oregon •	65
71 Pacific •	84

# BRUIN SEASON SCORES

91 Western Baptist	79
123 Linfield	116
87 Linfield	89
102 Pacific	85
72 Whitman	67
76 Alaska - Anchorage	67
75 Western Baptist	59
87 Lewis-Clark St.	101
95 Simon Fraser	77
81 College of Idaho	68
61 Warner Pacific	59
92 Alaska - Fairbanks	74
82 Simon Fraser	89
97 Lewis-Clark St.	69
86 Northwest Nazarene	71
65 College of Idaho	63
62 Northwest Nazarene	64
82 Warner Pacific	86
88 Whitman	100

H: 11-1 A: 8-7 SEASON: 19-8

## 1976-77

75 Lewis & Clark	86
86 Oregon College of Ed.	80
101 Linfield	90
91 Linfield	84
88 Eastern Oregon	71
88 Pacific	77
106 Pacific	94
90 Western Baptist	73
93 Linfield	80
89 Willamette	75
100 Whitman	95
78 Eastern Oregon	62
72 St. Martin's	81
91 Northwest Nazarene	87
80 College of Idaho	78
87 Willamette	90
73 Alaska-Anchorage	75
87 Alaska-Anchorage	85
81 Warner Pacific	59
91 Western Baptist	70
95 Lewis-Clark St.	79
92 Willamette	94
76 Warner Pacific	62
77 Lewis-Clark St.	101
97 Whitman	92
68 Puget Sound	89
99 Northwest Nazarene	85
65 St. Martin's	76

## NAIA District 2 Playoffs:

79 Hawaii-Hilo	85
----------------	----

H: 8-2 A: 12-7 SEASON: 20-9

## 1977-78

103 Pacific	88
95 Linfield	93
81 Hawaii-Hilo	87
79 Pacific	85
87 Linfield	99
82 Willamette	72
104 Eastern Oregon	74
88 Eastern Oregon	92
74 Seattle Pacific	79
83 Western Baptist	80
100 Linfield	107
75 St. Martin's	82
74 Oregon College of Ed.	77
87 Western Baptist	82*
81 Portland State	124
80 Seattle Pacific	75
106 Pacific	98
87 Warner Pacific	69



Sam Willard, 1976-82

67 Puget Sound	91
72 Alaska - Fairbanks	66
83 Western Baptist	75
69 Warner Pacific	64
84 Willamette	78
67 Northwest Nazarene	70
86 College of Idaho	82
86 Oregon College of Ed.	74
76 St. Martin's	91
87 Northwest Nazarene	85

## NAIA District 2 Playoffs:

65 Oregon Tech	79
----------------	----

H: 9-4 A: 6-10 SEASON: 15-14

\*Forfeited due to ineligible player

## 1978-79

82 Southern Oregon	98
68 Warner Pacific	73
83 Pacific	85
84 Linfield	107
90 Linfield	78
61 Willamette	60
74 College of Idaho	59
39 Central Washington	82
64 Lewis & Clark	65
76 Hawaii Pacific	82
74 Hawaii Pacific	96
55 BYU - Hawaii	54
51 BYU - Hawaii	65
59 Eastern Oregon	76
51 Northwest Nazarene	69
73 Pacific	82
74 Warner Pacific	72
69 Willamette	73
60 Western Baptist	73
98 Eastern Oregon	97
80 Lewis & Clark	88
104 BYU - Hawaii	87
98 Western Baptist	109
87 Pacific	100
61 Seattle Pacific	80
88 Northwest Nazarene	77
70 Warner Pacific	86
94 Hawaii Pacific	91
74 Seattle Pacific	82

H: 7-6 A: 2-14 SEASON: 9-20

## 1979-80

61 Western Baptist	76
94 Southern Oregon	80
74 Oregon College of Ed.	76
94 Whitman	83
72 Willamette	71
65 Seattle Pacific	73
88 Linfield	91
84 Linfield	97
61 Lewis & Clark	65
94 Concordia	84
99 Warner Pacific	91

92 Whitman	89
68 Central Washington	77
73 Willamette	66
90 College of Idaho	83
73 Oregon College of Ed.	74
81 Western Baptist	73
92 Pacific	76
83 Eastern Oregon	67
104 Warner Pacific	88
55 Western Baptist	38
74 Seattle Pacific	96
70 Lewis & Clark	68
75 Northwest Nazarene	105
63 College of Idaho	68
82 Eastern Oregon	73
84 Northwest Nazarene	77
108 Pacific	80
91 Warner Pacific	86

## NAIA District 2 Playoffs:

67 Oregon Tech	69
----------------	----

H: 10-4 A: 8-8 SEASON: 18-12

## 1980-81

77 Pacific	72
88 Eastern Oregon	99
73 Lewis & Clark	70
65 Pacific	73
83 Seattle Pacific	86
74 Linfield	83
79 Concordia	77
67 Point Loma	82
64 Oregon College of Ed.	99
63 Lewis & Clark	58
87 Linfield	74
61 Willamette	59
62 Oregon College of Ed.	80
82 Western Baptist	76
83 Warner Pacific	79
105 Pacific	89
64 Concordia	79
68 Willamette	83
70 Lewis & Clark	67
100 Concordia	82
33 Eastern Oregon	30
61 Northwest Nazarene	60
46 Northwest Nazarene	50
57 College of Idaho	84
68 Eastern Oregon	76
38 Western Baptist	37
89 Warner Pacific	80

## NAIA District 2 Playoffs:

58 Northwest Nazarene	61
-----------------------	----

H: 12-4 A: 3-9 SEASON: 15-13

## 1981-82

62 Willamette	67
80 Columbia Christian	79
66 Concordia	84
56 Judson Baptist	55
86 Linfield	102
71 College of Great Falls	101
77 Pacific	68
95 Seattle University	83
73 Western Washington	83
66 Fresno Pacific	72
64 Western Baptist	73
51 Lewis & Clark	79
78 Linfield	75
69 Western Oregon	79
76 College of Idaho	82
77 Northwest Nazarene	92
86 Eastern Oregon	96
70 Willamette	56



Mark Vernon, 1982-96

76 Warner Pacific	91
80 Western Oregon	111
74 Judson Baptist	82
91 Columbia Christian	73
85 Eastern Oregon	102
74 Concordia	85
88 Seattle University	73
76 Judson Baptist	70
88 Western Baptist	97
75 Warner Pacific	96
76 Western Baptist	79
101 College of Idaho	33
63 Northwest Nazarene	59

## NCCAA Regional Playoffs:

54 Judson Baptist	61
85 Columbia Christian	79

H: 8-11 A: 4-10 SEASON: 12-21

## 1982-83

62 Seattle Pacific	94
86 Warner Pacific	104
61 Willamette	67
65 Columbia Christian	60
63 Warner Pacific	67
73 Lewis & Clark	78
64 Pacific	54
61 Linfield	60
68 Pacific	38
68 Western Oregon	76
60 Lewis & Clark	59
66 Concordia	55
92 Eastern Oregon	46
66 Western Baptist	65
80 Hawaii-Hilo	92
78 Linfield	66
83 Judson Baptist	60
58 Warner Pacific	86
59 Eastern Oregon	66
73 College of Idaho	82
71 Western Baptist	60
74 Western Oregon	80
89 Pacific	78
68 Willamette	81
80 Concordia	71
71 Warner Pacific	72
71 Seattle Pacific	83
64 Northwest Nazarene	67
85 Judson Baptist	71

## NCCAA Regional Playoffs:

46 Western Baptist	35
69 Warner Pacific	75

H: 9-9 A: 6-7 SEASON: 15-16

## 1983-84

93 Judson Baptist	78
74 Western Oregon	72
90 Warner Pacific	100
82 Linfield	68
77 Western Baptist	67

72 Willamette	82
78 Eastern Oregon	67
64 Lewis & Clark	66
72 Lewis & Clark	58
103 Linfield	90
77 Concordia	76
83 Willamette	74
58 Western Oregon	80
77 Columbia Christian	63
70 Western Baptist	71
78 Northwest Nazarene	67
79 Warner Pacific	72
90 Multnomah	66
65 Western Oregon	75
81 Columbia Christian	78
80 Concordia	89
98 Judson Baptist	66
76 College of Idaho	85
103 Northwest Nazarene	113
67 Western Baptist	54
95 Northwest Christian	81
42 Warner Pacific	43

## NAIA District 2 Playoffs:

72 Western Oregon	86
-------------------	----

## NCCAA Regional Playoffs:

92 Concordia	101
--------------	-----

H: 10-3 A: 7-9 SEASON: 17-12

## 1984-85

90 Columbia Christian	74
72 Western Oregon	79
71 Willamette	52
91 Linfield	61
88 Pacific	52
78 Western Oregon State	64
77 Oregon Tech	95
107 U of Cal - San Diego	93
80 Linfield	76
82 Willamette	80
73 Pacific	56
55 Western Baptist	68
88 Columbia Christian	80
84 Concordia	77
70 Northwest Nazarene	64
80 Warner Pacific	78
74 Lewis & Clark	61
82 Eastern Oregon	61
73 Western Oregon	70
52 Western Baptist	50
91 Warner Pacific	80
88 Concordia	70
74 College of Idaho	94
97 Northwest Nazarene	106
105 Eastern Oregon	77
93 Columbia Christian	82

## NAIA District 2 Playoffs:

50 Western Baptist	47
71 Western Oregon	57
53 College of Idaho	61

## NCCAA Regional Playoffs:

74 Columbia Christian	67
52 Western Baptist	50

## NCCAA Nationals:

97 Olivet Nazarene	77
86 Point Loma College	95
70 Taylor University	55

H: 15-0 A: 12-7 SEASON: 27-7

# B R U I N   S E A S O N   S C O R E S

<b>1985-86</b>		<b>1987-88</b>		<b>1988-89</b>	
80 Central Washington •	82	90 Linfield •	97	86 Hawaii Pacific •	79
78 Whitworth •	74	99 Western Oregon •	105	86 Linfield •	82
76 Puget Sound •	93	93 Willamette •	86	67 Western Baptist •	57
71 Willamette •	57	74 Southern Oregon •	87	97 Western Oregon •	84
93 Pacific •	63	88 Lewis & Clark •	77	73 Seattle Pacific •	87
87 Western Oregon •	76	102 Lewis & Clark •	84	86 Linfield •	76
73 Western Baptist •	75	71 Willamette •	76	70 Western Baptist •	71
113 Concordia •	69	81 Western Oregon •	86	88 Western Oregon •	90
68 Linfield •	81	109 Western Oregon •	95	76 Western Baptist •	79
88 Pacific •	78	61 Biola •	78	86 Western Oregon •	91
75 Central Washington •	79	68 Westmont •	78	77 Eastern Oregon •	94
88 Pacific Lutheran •	71	128 Dominican •	48	84 Oregon Tech •	81
76 St. Martin's •	69	68 Linfield •	76	81 Azusa Pacific •	73
83 Western Oregon •	74	93 Columbia Christian •	78	93 Bethany Bible •	76
97 Columbia Christian •	53	88 Warner Pacific •	91	92 Warner Pacific •	69
83 Northwest Nazarene •	77	66 College of Idaho •	87	76 Columbia Christian •	69
73 College of Idaho •	68	83 Northwest Nazarene •	73	91 Concordia •	79
95 Eastern Oregon •	59	96 Concordia •	68	88 Northwest Christian •	79
107 Concordia •	70	136 Northwest College •	83	90 Northwest Nazarene •	73
78 College of Idaho •	90	73 Seattle Pacific •	75	73 College of Idaho •	88
73 Northwest Nazarene •	78	86 Western Baptist •	82	74 Western Baptist •	96
97 Eastern Oregon •	61	78 Northwest Nazarene •	87	96 Northwest Christian •	83
75 Linfield •	80	87 College of Idaho •	72	78 Concordia •	64
83 Columbia Christian •	66	114 Concordia •	65	72 College of Idaho •	91
106 Western Oregon •	90	89 Lewis & Clark •	106	99 Northwest Nazarene •	97
101 Concordia •	91	102 Western Baptist •	94	88 Columbia Christian •	85
73 Warner Pacific •	65	81 Warner Pacific •	84	100 Warner Pacific •	74
<b>NAIA District 2 Playoffs:</b>		88 Columbia Christian •	64	80 Western Baptist •	96
66 Warner Pacific •	56	<b>NAIA District 2 Playoffs:</b>		94 Eastern Oregon •	82
67 Oregon Tech •	76	101 Eastern Oregon •	82	70 Oregon Tech •	106
<b>NCCAA Regional Playoffs:</b>		90 Southern Oregon •	76	<b>H: 12-4 • A: 7-8   SEASON: 19-12</b>	
102 Warner Pacific •	85	61 Oregon Tech •	84	<b>1989-90</b>	
61 Western Baptist •	65	<b>NCCAA Regional Playoffs:</b>		84 Pacific •	74
<b>H: 10-1 • A: 11-9   SEASON: 21-10</b>		58 Concordia •	55	90 Willamette •	75
<b>1986-87</b>		76 Western Baptist •	90	89 Western Oregon •	76
77 Western Baptist •	72	61 Oregon Tech •	84	121 Northwest •	82
83 Willamette •	60	<b>NCCAA Regional Playoffs:</b>		77 Seattle Pacific •	87
114 Linfield •	72	121 Concordia •	78	<b>1990-91</b>	
82 Pacific •	61	77 Western Baptist •	74	110 Northwest Christian •	85
75 Linfield •	78	96 Eastern Oregon •	74	114 Southern Oregon •	112
97 Warner Pacific •	87	73 College of Idaho •	107	103 Western Washington •	62
59 Humboldt State •	70	96 Western Oregon •	77	91 St. Martin's •	78
85 Cal Poly - San Luis Obispo •	79	122 Concordia •	82	92 Western Oregon •	85
96 California Lutheran •	79	93 Western Oregon •	100	127 Columbia Christian •	74
104 St. Martin's •	73	95 Columbia Christian •	81	80 Western Baptist •	83
97 Columbia Christian •	68	<b>NAIA District 2 Playoffs:</b>		102 Lewis-Clark St. •	79
104 Western Oregon •	88	101 Warner Pacific •	75	105 U. Puget Sound •	100
95 Warner Pacific •	85	75 College of Idaho •	58	101 Mesa State •	89
121 College of Idaho •	89	69 Oregon Tech •	75	107 Concordia •	89
117 Northwest Nazarene •	86	<b>NCCAA Regional Playoffs:</b>		111 Western Oregon •	106
120 Linfield •	76	121 Concordia •	78	106 Eastern Oregon •	76
143 Northwest •	56	77 Western Baptist •	74	118 Columbia Christian •	75
109 Eastern Oregon •	80	<b>NCCAA National Playoffs:</b>		93 Western Baptist •	55
115 Concordia •	77	73 Covenant •	75	74 College of Idaho •	79
114 Northwest •	55	<b>H: 16-0 • A: 11-6   SEASON: 27-6</b>		102 Northwest Nazarene •	71
62 Western Baptist •	52	<b>1991-92</b>		81 Seattle Pacific •	89
87 Northwest Nazarene •	75	95 St. Martin's •	97	119 Warner Pacific •	95
93 College of Idaho •	107	135 Northwest Christian •	78	118 Concordia •	93
96 Eastern Oregon •	77	103 Linfield •	101	88 Northwest Christian •	95
122 Concordia •	82	107 Columbia Christian •	59	116 Warner Pacific •	103
93 Western Oregon •	100	102 Concordia •	79	77 Northwest Nazarene •	72
95 Columbia Christian •	81	78 Linfield •	91	94 College of Idaho •	82
<b>NAIA District 2 Playoffs:</b>		100 Albertson •	89	137 Columbia Christian •	91
101 Warner Pacific •	75	99 Northwest Nazarene •	93	92 Western Baptist •	76
75 College of Idaho •	58	68 Pacific •	76	97 Concordia •	101
69 Oregon Tech •	75	71 Western Baptist •	74	<b>NAIA District 2 Playoffs:</b>	
<b>NCCAA Regional Playoffs:</b>		88 Oregon Tech •	89	80 Linfield •	75
121 Concordia •	78	<b>1992-93</b>		100 Willamette •	98
77 Western Baptist •	74	91 Northwest •	98	78 Willamette •	105
<b>NCCAA National Playoffs:</b>		76 Willamette •	103	118 Southern Oregon •	117
73 Covenant •	75	82 Western Oregon •	81	80 Linfield •	90
<b>H: 16-0 • A: 11-6   SEASON: 27-6</b>		87 Willamette •	107	92 St. Martin's •	94
<b>1987-88</b>		<b>NAIA National Playoffs:</b>		98 Northwest •	85
104 Columbia Christian •	85	90 Missouri Valley •	70	85 Linfield •	80
80 Oregon Tech •	63	85 Eureka •	77	81 Albertson •	86
80 Puget Sound •	68	82 Northwestern •	85	67 Northwest Nazarene •	103
84 Willamette •	92	<b>H: 11-4 • A: 13-7   SEASON: 24-11</b>		90 Occidental •	64
86 Western Oregon •	84	<b>1992-93</b>		82 Western Baptist •	100
90 Western Oregon •	72	91 Northwest •	98	78 Lewis & Clark •	98
90 Point Loma Nazarene •	86	76 Willamette •	105	102 Western Baptist •	98
83 Western Washington •	75	118 Southern Oregon •	117	104 Southern Oregon •	99
97 Grace College •	80	80 Linfield •	90	94 Concordia •	82
69 Point Loma Nazarene •	87	92 St. Martin's •	94	70 Eastern Oregon •	93
103 Northwest Nazarene •	92	98 Northwest •	85	98 Northwest Christian •	66
72 College of Idaho •	68	<b>H: 11-4 • A: 13-7   SEASON: 24-11</b>		62 Willamette •	80
94 Northwest Christian •	92	<b>1992-93</b>		115 Northwest Christian •	95
93 Western Baptist •	85	91 Northwest •	98	74 Eastern Oregon •	85
75 Columbia Christian •	59	76 Willamette •	105	73 Western Oregon •	85
95 Concordia •	81	118 Southern Oregon •	117	113 Concordia •	94
81 Lewis & Clark •	77	80 Linfield •	90	79 Northwest Nazarene •	68
82 Western Baptist •	80	92 St. Martin's •	94	75 Albertson •	94
84 Columbia Christian •	74	98 Northwest •	85	84 Oregon Tech •	72
96 Warner Pacific •	72	85 Linfield •	80	57 Oregon Tech •	60
68 College of Idaho •	63	81 Albertson •	86	120 Southern Oregon •	87
72 Northwest Nazarene •	82	67 Northwest Nazarene •	103	101 Western Baptist •	94
100 Northwest Christian •	49	90 Occidental •	64	85 Western Oregon •	94
94 Warner Pacific •	59	82 Western Baptist •	100	<b>H: 7-6 • A: 7-9   SEASON: 14-15</b>	
122 Concordia •	97	78 Lewis & Clark •	98	<b>1993-94</b>	
<b>NAIA Dist. 2 Playoffs:</b>		104 Southern Oregon •	99	88 Puget Sound •	99
98 Eastern Oregon •	92	94 Concordia •	82	85 Concordia •	81
76 Western Baptist •	66	70 Eastern Oregon •	93	93 Western Baptist •	62
98 Willamette •	95	98 Northwest Christian •	66	76 Pacific •	79
<b>NAIA Nationals:</b>		62 Willamette •	80	76 Linfield •	71
73 Pfeiffer College •	97	115 Northwest Christian •	95	99 St. Martin's •	71
<b>H: 16-0 • A: 13-5   SEASON: 29-5</b>		74 Eastern Oregon •	85	74 Western Baptist •	65
<b>1990-91</b>		73 Western Oregon •	85	54 Willamette •	51
110 Northwest Christian •	85	113 Concordia •	94	61 St. Martin's •	60
114 Southern Oregon •	112	79 Northwest Nazarene •	68	79 Linfield •	95
103 Western Washington •	62	84 Oregon Tech •	72	98 Eastern Oregon •	90
91 St. Martin's •	78	57 Oregon Tech •	60	88 Whitman •	79
92 Western Oregon •	85	120 Southern Oregon •	87	72 Lewis & Clark •	80
127 Columbia Christian •	74	101 Western Baptist •	94	97 NW Christian •	66
80 Western Baptist •	83	85 Western Oregon •	94	94 Oregon Tech •	104
102 Lewis-Clark St. •	79	<b>H: 7-6 • A: 7-9   SEASON: 14-15</b>		100 Southern Oregon •	88
105 U. Puget Sound •	100	<b>1993-94</b>		86 Western Oregon •	66
101 Mesa State •	89	88 Puget Sound •	99	<b>1994-95</b>	
107 Concordia •	89	85 Concordia •	81	90 St. Martin's •	63
111 Western Oregon •	106	93 Western Baptist •	62	114 Concordia (OT) •	112
106 Eastern Oregon •	76	76 Pacific •	79	78 Western Baptist •	95
118 Columbia Christian •	75	76 Linfield •	71	79 Linfield •	91
93 Western Baptist •	55	99 St. Martin's •	71	84 Lewis & Clark •	90
74 College of Idaho •	79	74 Western Baptist •	65	80- Puget Sound •	84
102 Northwest Nazarene •	71	54 Willamette •	51	116 Southern Oregon •	93
81 Seattle Pacific •	89	61 St. Martin's •	60	80 Willamette •	38
119 Warner Pacific •	95	79 Linfield •	95	94 Pacific • (OT) •	96
118 Concordia •	93	98 Eastern Oregon •	90	79 Linfield •	82
88 Northwest Christian •	95	88 Whitman •	79	85 Western Baptist • (OT) •	87
116 Warner Pacific •	103	72 Lewis & Clark •	80	80 Humboldt State •	86
77 Northwest Nazarene •	72	97 Pacific Lutheran •	84	76 Alaska-Fairbanks •	90
94 College of Idaho •	82	69 Pacific •	56	99 Northwest •	72
137 Columbia Christian •	91	81 Lewis & Clark •	77	73 Northwest Nazarene •	82
92 Western Baptist •	76	97 Pacific Lutheran •	84	99 Albertson •	89
97 Concordia •	101	69 Willamette •	77	101 Southern Oregon •	83
<b>NAIA District 2 Playoffs:</b>		93 Linfield •	84	94 Oregon Tech •	74
80 Linfield •	75	<b>H: 8-4 • A: 3-9   SEASON: 11-13</b>		93 Concordia •	94
100 Willamette •	98	<b>1994-95</b>		88 Eastern Oregon •	77
78 College of Idaho •	95	79 Southern Oregon •	80	78 Western Oregon •	96
<b>H: 11-2 • A: 13-4   SEASON: 24-6</b>		87 Western Baptist •	80	100 Western Baptist •	77
<b>1991-92</b>		78 Concordia •	73	87 Willamette •	96
95 St. Martin's •	97	81 Puget Sound •	101	64 Albertson •	89
135 Northwest Christian •	78	84 Seattle •	62	70 Northwest Nazarene •	75
103 Linfield •	101	115 Western Baptist •	127	78 Concordia (OT) •	79
107 Columbia Christian •	59	77 Pacific •	73	78 Oregon Tech •	96
102 Concordia •	79	84 Christian Heritage •	87	102 Southern Oregon • (OT) •	107
78 Linfield •	91	72 Point Loma •	87	94 Western Oregon •	78
100 Albertson •	89	74 Lewis & Clark •	69	78 Eastern Oregon •	77
99 Northwest Nazarene •	93	57 Pacific Lutheran •	78	<b>Cascade Conference Playoffs:</b>	
68 Pacific •	76	68 Pacific •	83	86 Western Baptist •	89
71 Western Baptist •	74	93 Whitman •	75	<b>H: 6-6 A: 6-13   SEASON: 12-19</b>	
88 Oregon Tech •	89	75 Whitworth •	86	<b>1995-96</b>	

## Albertson College of Idaho

### Fri-Sat, December 13-14, Caldwell, Idaho

**Location:** Caldwell, Idaho  
**Enrollment:** 650  
**Established:** 1891  
**Athletic Affiliation:** NAIA Division II  
**Conference:** Cascade Collegiate Conference  
**Home Court:** Albertson Activities Center (2,422)  
**Colors:** Purple and Gold  
**Nickname:** Coyotes ('Yotes)  
**Sports Information Director:** Dave Hahn  
**SID Office Phone/Fax:** (208) 459-5681 / (208) 459-5854  
**SID Home Phone:** (208) 454-2112  
**Head Coach:** Martin Holly  
**Alma Mater (Year):** Pepperdine University ('69)  
**Coach's Record at School (Years):** 345-113 (15)  
**1995-96 Record (Postseason Finish):** 31-3 (NAIA Division II National Champions)  
**Lettermen Lost/Returning:** 7/6  
**Starters Returning:** 1  
**Players to Watch:**  
 Taylor Ebright, Guard, 6-2, Sr., 7.9 ppg, 2.4 rpg, 1.6 apg  
 Bobby Ladine, Guard, 6-2, Jr.  
 Jermaine Galloway, Post, 6-9, Sr.  
**NAIA Series Record:** Albertson leads 19-17  
**Last Meeting:** Albertson 89, GF 64 (Feb. 3, 1995, in Newberg)



## Concordia University

### Saturday, November 30, Portland, Ore.

### Thursday, February 20, Newberg, Ore.

**Location:** Portland, Ore.  
**Enrollment:** 1,050  
**Established:** 1904  
**Athletic Affiliation:** NAIA Division II  
**Conference:** Cascade Collegiate Conference  
**Home Court:** Concordia Gymnasium (1,200)  
**Colors:** White and Navy Blue  
**Nickname:** Cavaliers  
**Sports Information Director:** Mike Merrill  
**SID Office Phone/Fax:** (503) 280-8595 / (503) 280-8591  
**Head Coach:** Brad Barbarick  
**Alma Mater (Year):** Columbia Christian ('87)  
**Coach's Record at School (Years):** 24-38 (2)  
**1995-96 Record:** 12-18  
**Lettermen Lost/Returning:** 7/7  
**Starters Returning:** 2  
**Players to Watch:**  
 Bryant Carlson, Guard, 5-10, Sr., 7.9 ppg, 5.47 apg  
 Chris Swallom, Guard, 6-4, Jr.  
**NAIA Series Record:** GFC leads 33-8  
**Last Meetings:** GFC 78, CU 79 OT (Feb. 7, 1995, in Newberg); GF 85, CU 69 (Jan. 23, 1996, in Newberg)



## Lewis & Clark College

### Tuesday, January 14, Newberg, Ore.

### Tuesday, February 18, Portland, Ore.

**Location:** Portland, Ore.  
**Enrollment:** 1,800  
**Established:** 1867  
**Athletic Affiliation:** NAIA Division II  
**Conference:** Northwest Conference of Independent Colleges  
**Home Court (Capacity):** Pamplin Sports Center (2,170)  
**Colors:** Orange and Black  
**Nickname:** Pioneers  
**Sports Information Director:** Tony Fowler  
**SID Office Phone/Fax:** (503) 768-7067 / (503) 768-7058  
**SID Home Phone:** (503) 293-9429  
**Press Row Phone:** (503) 768-7005  
**Head Coach:** Bob Gaillard



**Alma Mater (Year):** San Francisco ('62)  
**Coach's Record at School (Years):** 109-89 (7)  
**1995-96 Record (Postseason Finish):** 17-10 (2nd in conference)  
**Lettermen Lost/Returning:** 4/9  
**Starters Returning:** 4  
**Players to Watch:**  
 Perry Lam, Guard, 5-10, Sr., 9.3 ppg, 2.5 rpg  
 Whitney Brake, Forward, 6-7, Jr., 13.2 ppg, 7.0 rpg  
 Jeff Flowers, Post, 6-8, Jr., 11.8 ppg, 6.1 rpg  
 Brooks Meek, Guard, 6-0, Jr., 14.4 ppg, 4.2 rpg  
**NAIA Series Record:** L&C leads 17-12  
**Last Meetings:** GF 84, L&C 90 (Nov. 26, 1994, in Newberg); GF 81, L&C 77 (Feb. 10, 1996, in Newberg)

## Linfield College

### Friday, January 24, McMinnville, Ore.

### Saturday, February 15, Newberg, Ore.

**Location:** McMinnville, Ore.  
**Enrollment:** 2,220  
**Established:** 1849  
**Athletic Affiliation:** NAIA Division II  
**Conference:** Northwest Conference of Independent Colleges  
**Home Court (Capacity):** Ted Wilson Gymnasium (1,924)  
**Colors:** Cardinal Red and Purple  
**Nickname:** Wildcats  
**Sports Information Director:** Kelly Bird  
**SID Office Phone/Fax:** (503) 434-2439 / (503) 434-2497  
**SID Home Phone:** (503) 591-8947  
**Head Coach:** Larry Doty  
**Alma Mater (Year):** Linfield ('78)  
**Coach's Record at School (Years):** 130-120 (10)  
**1995-96 Record:** 11-14  
**Lettermen Lost/Returning:** 7/8  
**Starters Returning:** 1  
**Player to Watch:**  
 Eric Rohlfis, Guard, 6-2, Sr., 7.8 ppg, 2.2 rpg  
**NAIA Series Record:** GF leads 31-23  
**Last Meetings:** GF 79, LC 82 (Dec. 9, 1995, in McMinnville); GF 93, Linfield 84 (Feb. 17, 1996, in Newberg)



## Northwest Nazarene College

### Fri.-Sat., December 13-14, Caldwell, Idaho

**Location:** Nampa, Idaho  
**Enrollment:** 1,201  
**Established:** 1913  
**Athletic Affiliation:** NAIA Division II  
**Conference:** Cascade Collegiate Conference  
**Home Court:** Montgomery Gym (3,550)  
**Colors:** Red and Black  
**Nickname:** Crusaders  
**Sports Information Director:** Rich Sanders  
**SID Office Phone/Fax:** (208) 467-8397 / (208) 467-8396  
**SID Home Phone:** (208) 467-3257  
**Head Coach:** Ed Weidenbach  
**Alma Mater (Year):** Northwest Nazarene College (1977)  
**Coach's Record at School (Years):** 118-50 (5)  
**1995-96 Record (Postseason Finish):** 19-13  
 (3rd in conference; NAIA Division II Tournament Quarterfinals)  
**Lettermen Lost/Returning:** 9/3  
**Starters Returning:** 2  
**Players to Watch:**  
 Nathan Smith, Forward, 6-6, Sr., 15.2 ppg, 7.5 rpg  
 Tony Schumacher, Guard, 6-1, Sr., 7.4 ppg, 1.8 rpg  
**NAIA Series Record:** Series tied 27-27  
**Last Meeting:** NNC 75, GF 70 (Feb. 4, 1995, in Newberg)



## Pacific University

### Tuesday, January 28, Newberg, Ore.

### Tuesday, February 11, Forest Grove, Ore.

**Location:** Forest Grove, Ore.  
**Enrollment:** 1,900  
**Established:** 1849  
**Athletic Affiliation:** NAIA Division II  
**Conference:** Northwest Conference of Independent Colleges  
**Home Court (Capacity):** Pacific Athletic Center (2,000)  
**Colors:** Red, Black and White  
**Nickname:** Boxers  
**Sports Information Director:** Ronn Rowland  
**SID Office Phone/Fax:** (503) 359-2161 / (503) 359-2209  
**SID Home Phone:** (503) 359-1597  
**Head Coach:** Ken Schumann  
**Alma Mater (Year):** George Fox ('81)  
**Coach's Record at School (Years):** 47-59 (4)  
**1995-96 Record (Postseason Finish):** 10-15  
**Lettermen Lost/Returning:** 4/6  
**Starters Returning:** 3  
**Players to Watch:**  
 Brett Jefferies, Forward, 6-7, Sr., 18.7 ppg, 5.2 rpg  
 Jason Morgenthaler, Forward Guard, 6-4, Sr., 8.8 ppg, 4.9 rpg  
 Sean Eaton, Forward, 6-4, Sr., 7.7 ppg, 4.7 rpg  
 Jeremy Vernon, Guard, 6-3, So., 5.8 ppg, 1.4 rpg  
**NAIA Series Record:** GF leads 27-26  
**Last Meeting:** GF 69, Pacific 56 (Feb. 6, 1996, in Newberg)



## Pacific Lutheran University

### Friday, January 10, Tacoma, Wash.

### Saturday, February 1, Newberg, Ore.

**Location:** Tacoma, Wash.  
**Enrollment:** 3,500  
**Established:** 1890  
**Athletic Affiliation:** NAIA Division II  
**Conference:** Northwest Conference of Independent Colleges  
**Home Court (Capacity):** Olson Auditorium (3,200)  
**Colors:** Gold and Black  
**Nickname:** Lutes  
**Sports Information Director:** Nick Dawson  
**SID Office Phone/Fax:** (206) 535-7356 / (206) 535-7384  
**SID Home Phone:** (206) 770-3715  
**Head Coach:** Bruce Haroldson  
**Alma Mater (Year):** Augustana ('58)  
**Coach's Record at School (Years):** 169-179 (13)  
**1995-96 Record (Postseason Finish):** 13-12  
**Lettermen Lost/Returning:** 4/9  
**Starters Returning:** 3  
**Players to Watch:**  
 Brad Brevet, Center, 6-7, So., 11.1 ppg, 5.1 rpg  
 Seth Albright, Forward, 6-3, Jr., 10.4 ppg, 4.5 rpg  
 Chris Peirce, Guard, 6-1, Sr., 7.2 ppg  
**NAIA Series Record:** PLU leads 2-1  
**Last Meeting:** PLU 97, GF 84 (Feb. 12, 1996, in Newberg)





## University of Puget Sound

**Saturday, January 11, Tacoma, Wash.  
Friday, January 31, Newberg, Ore.**

**Location:** Tacoma, Wash.  
**Enrollment:** 2,700  
**Established:** 1888  
**Athletic Affiliation:** NAIA Division II,  
NCAA Division III  
**Conference:** Northwest Conference of  
Independent Colleges  
**Home Court (Capacity):** Warner Gym (4,000)  
**Colors:** Green and Gold  
**Nickname:** Loggers  
**Sports Information Director:** Robin Hamilton  
**SID Office Phone/Fax:** (206) 736-3141 / (206) 736-3634  
**SID Home Phone:** (206) 732-1974  
**Head Coach:** Bob Nicht  
**Alma Mater (Year):** Washington State ('75)  
**Coach's Record at School (Years):** 110-94 (7)  
**1995-96 Record (Postseason Finish):** 11-15  
**Lettermen Lost/Returning:** 10-3  
**Starters Returning:** 1  
**Players to Watch:**  
Derek Pender, Guard, 6-2, Jr., 8.0 ppg, 1.9 rpg  
Manny Martucci, Guard, 6-4, Sr., 4.4 ppg, 2.1 rpg  
Corey Van Lith, Guard, 5-10, Sr., 5.7 ppg, 3.4 apg  
**NAIA Series Record:** UPS leads 7-2  
**Last Meeting:** UPS 101, GF 81 (Dec. 5, 1995, in Newberg)



## Seattle University

**Friday, December 6, Seattle, Wash.**

**Location:** Seattle, Wash.  
**Enrollment:** 5,999  
**Established:** 1891  
**Athletic Affiliation:** NAIA Division I  
**Conference:** Pacific Northwest Athletic  
Conference  
**Home Court (Capacity):**  
Connolly Center (1,000)  
**Colors:** Scarlet and White  
**Nickname:** Chieftains  
**Sports Information Director:** Gretchen Gove  
**SID Office Phone/Fax:** (206) 296-5915 / (206) 296-2154  
**SID Home Phone:** (206) 632-8847  
**Head Coach:** Al Harriston  
**Alma Mater (Year):** Bowling Green ('68)  
**Coach's Record at School (Years):** 61-92 (5)  
**1995-96 Record (Postseason Finish):** 14-17  
**Lettermen Lost/Returning:** 5-10  
**Starters Returning:** 1  
**Players to Watch:**  
Roger Hammond, Center, 6-9, Sr., 5.9 ppg, 4.3 rpg  
Mark Stottlemeyer, Forward, 6-6, Jr., 5.2 ppg, 2.9 rpg  
**NAIA Series Record:** GF leads 3-0  
**Last Meeting:** GF 84, SU 62 (Dec. 9, 1995, in Newberg)



## Southern Oregon State College

**Tuesday, November 26, Newberg, Ore.**

**Location:** Ashland, Ore.  
**Enrollment:** 4,330  
**Established:** 1882  
**Athletic Affiliation:** NAIA Division II  
**Conference:** Cascade Collegiate  
Conference  
**Home Court (Capacity):** Mc Neal  
Pavilion (2,500)  
**Colors:** Red and Black  
**Nickname:** Raiders  
**Sports Information Director:** Rich Rosenthal  
**SID Office Phone/Fax:** (541) 552-6824 / (541) 552-6543  
**SID Home Phone:** (541) 535-9856



**Head Coach:** Brian McDermott  
**Alma Mater (Year):** South Dakota ('78)  
**Coach's Record at School (Years):** 1st Year  
**1995-96 Record (Postseason Finish):** 6-23  
**Lettermen Lost/Returning:** 6-5  
**Starters Returning:** 2  
**Players to Watch:**  
Ryan Harbert, Forward, 6-3, Sr., 12.3 ppg, 5.0 rpg  
Johnnie Epps, Forward, 6-5, Sr., 12.2 ppg, 6.1 rpg  
**NAIA Series Record:** SOSC leads 25-19  
**Last Meetings:** SOSC 80, GFC 79 (Nov. 21, 1995, in Ashland)

## Western Baptist College

**Friday, November 22, Newberg, Ore.  
Tuesday, December 10, Salem, Ore.**

**Location:** Salem, Ore.  
**Enrollment:** 720  
**Established:** 1935  
**Athletic Affiliation:** NAIA Division II,  
NCCAA Division I  
**Conference:** Cascade Collegiate  
Conference; NCCAA District 7  
**Home Court (Capacity):** C.E. Jeffers  
Sports Center (1,500)  
**Colors:** Gold and Royal Blue  
**Nickname:** Warriors  
**Sports Information Director:** Tim Smith  
**SID Office Phone/Fax:** (503) 375-7021 / (503) 315-2974  
**SID Home Phone:** (503) 362-1149  
**Head Coach:** Tim Hills  
**Alma Mater (Year):** Western Baptist ('68)  
**Coach's Record at School (Years):** 341-332 (21)  
**1995-96 Record:** 21-16  
**Lettermen Lost/Returning:** 3-2  
**Starters Returning:** 2  
**Players to Watch:**  
Brian Hills, Guard, 6-0, Sr., 27.9 ppg, 4.4 rpg, 2.8 apg  
(2nd Team NAIA All-American)  
Nate Linman, Center, 6-6, Sr., 15.5 ppg, 8.2 rpg  
**NAIA Series Record:** GF leads 46-26  
**Last Meetings:** Western Baptist 127, GF 115 (Dec. 15, 1995, in Salem)



## Whitman College

**Saturday, January 4, Newberg, Ore.  
Friday, February 7, Walla Walla, Wash.**

**Location:** Walla Walla, Wash.  
**Enrollment:** 1,300  
**Established:** 1859  
**Athletic Affiliation:** NAIA Division II,  
NCAA Division III  
**Conference:** Northwest Conference of  
Independent Colleges  
**Home Court (Capacity):** Sherwood Center (2,500)  
**Colors:** Blue and Maize  
**Nickname:** Missionaries  
**Sports Information Director:** David Holden  
**SID Office Phone/Fax:** (509) 527-5902 / (509) 527-4963  
**SID Home Phone:** (509) 558-3823  
**Head Coach:** Skip Molitor  
**Alma Mater (Year):** Gonzaga ('74)  
**Coach's Record at School (Years):** 17-35 (2)  
**1995-96 Record:** 7-17  
**Lettermen Lost/Returning:** 2-6  
**Starters Returning:** 4  
**Players to Watch:**  
Dan Rough, Guard, 6-4, Jr., 18.3 ppg  
Evan Jones, Forward, 6-6, Sr., 16.8 ppg, 8.0 rpg  
**NAIA Series Record:** GFC leads 7-3  
**Last Meeting:** Whitman 68, GFC 61 (Feb. 3, 1996 in Walla Walla, Wash.)



## Whitworth College

**Friday, January 3, Newberg, Ore.  
Saturday, February 8, Spokane, Wash.**

**Location:** Spokane, Wash.  
**Enrollment:** 1,800  
**Established:** 1890  
**Athletic Affiliation:** NAIA Division II,  
NCAA Division III  
**Conference:** Northwest Conference of  
Independent Colleges (NCIC)  
**Home Court (Capacity):** Whitworth  
Fieldhouse (1,800)  
**Colors:** Crimson and Black  
**Nickname:** Pirates  
**Sports Information Director:** Steve Flegel  
**SID Office Phone/Fax:** (509) 466-3239 / (509) 466-3720  
**SID Home Phone:** (509) 465-0796  
**Head Coach:** Warren Friedrichs  
**Alma Mater (Year):** Concordia (Neb.) ('71)  
**Coach's Record at School (Years):** 175-139 (11)  
**1995-96 Record (Postseason Finish):** 26-5 (NCIC champions)  
NAIA Division II runner-up  
**Lettermen Lost/Returning:** 4-8  
**Starters Returning:** 2  
**Players to Watch:**  
Nate Williams, Guard, 6-1, Sr., 14.1 ppg, 3.8 apg  
Gabe Jones, Guard/Forward, 6-5, Sr., 10.3 ppg  
**NAIA Series Record:** Whitworth leads 4-2  
**Last Meetings:** Whitworth 78, GFC 59 (Feb. 2, 1996, in Spokane)



## Willamette University

**Fri.-Sat., December 13-14, Caldwell, Idaho  
Saturday, January 25, Salem, Ore.  
Friday, February 14, Newberg, Ore.**

**Location:** Salem, Ore.  
**Enrollment:** 1,700  
**Established:** 1842  
**Athletic Affiliation:** NAIA Division II,  
NCAA Division III  
**Conference:** Northwest Conference of  
Independent Colleges  
**Home Court (Capacity):** Lestle J. Sparks  
Center (2,600)  
**Colors:** Cardinal and Old Gold  
**Nickname:** Bearcats  
**Sports Information Director:** Cliff Voliva  
**SID Office Phone/Fax:** (503) 370-6110 / (503) 375-5428  
**SID Home Phone:** (503) 390-9072  
**Head Coach:** Gordie James  
**Alma Mater (Year):** Cal. Poly Pomona ('64)  
**Coach's Record at School (Years):** 178-86 (9)  
**1995-96 Record:** 11-13  
**Lettermen Lost/Returning:** 6-10  
**Starters Returning:** 2  
**Players to Watch:**  
Mike Hayter Wing, 6-1, Sr., 15.3 ppg, 4.0 rpg, 3.9 apg  
Jay Moore, Guard, 6-4, Sr., 12.0 ppg, 4.5 rpg, 2.9 apg  
**NAIA Series Record:** GF leads 25-23  
**Last Meetings:** Willamette 77, GF 69 (Feb. 16, 1996, in Newberg)



## 1996-1997 MEN'S BASKETBALL SCHEDULE

### NOVEMBER

22 Fri.	Western Baptist College	7:30	Newberg, Ore.
26 Tue.	Southern Oregon State College	7:30	Newberg, Ore.
30 Sat.	Concordia University	7:30	Portland, Ore.

### DECEMBER

6 Fri.	Seattle University	7:30	Seattle, Wash.
10 Tue.	Western Baptist College	7:30	Salem, Ore.
13-14 Fri.-Sat.	Albertson Tournament	TBA	Caldwell, Idaho

*(Albertson, George Fox, Northwest Nazarene, Willamette)*

### JANUARY

3 Fri.	Whitworth College*	8:00	Newberg, Ore.
4 Sat.	Whitman College*	8:00	Newberg, Ore.
10 Fri.	Pacific Lutheran University*	8:00	Tacoma, Wash.
11 Sat.	University of Puget Sound*	8:00	Tacoma, Wash.
14 Tue.	Lewis & Clark College*	8:00	Newberg, Ore.
24 Fri.	Linfield College*	8:00	McMinnville, Ore.
25 Sat.	Willamette University*	8:00	Salem, Ore.
28 Tue.	Pacific University*	8:00	Newberg, Ore.
31 Fri.	University of Puget Sound*	8:00	Newberg, Ore.

### FEBRUARY

1 Sat.	Pacific Lutheran University*	8:00	Newberg, Ore.
7 Fri.	Whitman College*	8:00	Walla Walla, Wash.
8 Sat.	Whitworth College*	8:00	Spokane, Wash.
11 Tue.	Pacific University*	8:00	Forest Grove, Ore.
14 Fri.	Willamette University*	8:00	Newberg, Ore.
15 Sat.	Linfield College*	8:00	Newberg, Ore.
18 Tue.	Lewis & Clark College*	8:00	Portland, Ore.
20 Thur.	Concordia University	7:30	Newberg, Ore.

\* Northwest Conference of Independent Colleges (NCIC) Games

### CREDITS

The 1996-97 George Fox University basketball media guide is a production of the George Fox Sports Information Office. Copy was compiled and written by Rob Felton, sports information director, with assistance from Scott Wade, student assistant. Design by Felton; layout and typesetting by Carrie Marsh, publications assistant. Photography by Anita Cirulis, director of publications. Printing by Barclay Press, Newberg.

## MEDIA INFO

Facilities for the working press covering Bruin basketball are provided at the courtside press section on the west side of the Miller Gymnasium. Available for each game are team rosters, starting lineups, and pertinent pregame information, including accumulative statistics for the Bruins. Press box service for each home contest includes team and individual statistics at halftime and complete statistics immediately following the game.

Working space and telephones for members of the press desiring them are available in the administrative area off the upper lobby. A courtside telephone also is available. Dressing rooms for both teams are on the lower level, south side.

George Fox University appreciates the cooperation it has shared with the news media. This book has been prepared as a service for area newspapers, radio and television stations, and wire services.

All requests for information, statistics, photographs and press passes should be directed to Rob Felton, Sports Information Director, George Fox University, 414 N. Meridian St., Newberg, Oregon 97132-2697. Office phone: 503/538-8383, ext. 2127. SID FAX 503/537-3830. Home phone: 503/538-7722. Athletic Department phone: 503/538-8383, ext. 2910.

## NEWS MEDIA

### NEWSPAPERS

**Newberg Graphic**  
Newberg  
James Hill  
503/538-2181  
FAX 503/538-1632

**Statesman Journal**  
Salem  
Capi Lynn  
James Bennett  
503/399-6700  
1-800-556-3975  
FAX 503/399-6706

**Oregonian**  
Portland  
Dennis Peck  
Ryan Peck  
Justin Hagey  
1-800-452-1420  
1-800-826-0376  
FAX 503/221-8168

### WIRE SERVICE

**Associated Press**  
503/228-2169  
1-800-452-3501

### TELEVISION

**KATU-TV**  
Portland  
503/231-4268  
FAX 503/231-4263

**KGW-TV**  
Portland  
503/226-3111  
FAX 503/226-5059

**KOIN-TV**  
Portland  
503/464-0600  
FAX 503/464-0806

**KPTV**  
Portland  
503/230-1200  
FAX 503/230-1065

**Bruin Cable Network**  
George Fox University  
503/538-8383.  
Ext. 2595

### RADIO

**KLYC**  
503/472-1260  
FAX 503/472-3243

**KEX**  
503/225-1190  
FAX 503/224-3216

**KFXX**  
503/223-1441  
FAX 503/227-5466

# 1996-97 MEN'S BASKETBALL SCHEDULE

	SUN	MON	TUE	WED	THU	FRI	SAT
NOV	10	11	12	13	14	15	16
	17	18	19	20	21	22 Western Baptist ◊	23
	24	25	26 Southern Oregon ◊	27	28	29	30 Concordia ◊
DEC	1	2	3	4	5	6 Seattle ◊	7
	8	9	10 Western Baptist ◊	11	12	13 Albertson Tournament	14
	15	16	17	18	19	20	21
	22	23	24	25	26	27	28
JAN	29	30	31	1	2	3 Whitworth*	4 Whitman*
	5	6	7	8	9	10 Puget Lutheran*	11 Puget Sound*
	12	13	14 Lewis & Clark*	15	16	17	18
	19	20	21	22	23	24 Linfield*	25 Willamette*
FEB	26	27	28 Pacific*	29	30	31 Puget Sound*	1 Pacific Lutheran*
	2	3	4	5	6	7 Whitman*	8 Whitworth*
	9	10	11 Pacific*	12	13	14 Willamette*	15 Linfield*
	16	17	18 Lewis & Clark*	19	20 Concordia ◊	21	22

All games begin at 8 p.m. unless otherwise noted. ☐ 7:30 p.m. \*Northwest Conference games

## MEN'S BASKETBALL 1996-97 GAME INFORMATION

Home Games: Miller Gymnasium, Wheeler Sports Center, Newberg, Oregon

General Admission: Adults \$5, students \$3, senior citizens and children under 12 \$1, groups of 10 or more \$3 per person (make reservation prior to game day) Ticket and Game Information: 503/538-8383, ext. 2127

For updated George Fox University sports and calendar information, call George Fox University's event line at 503/537-EVNT (3868).

